

## XFAF8532J021 - FERRETTI YACHTS



**Builder:** [Ferretti Yachts](#)

**LOA:** 85' 0" (25.91 m)

**Year Built:** 2021

**Beam:** 20' 0" (6.27 m)

**Model:** 850

**Max Draft:** 21' 4" (6.50 m)

**Price:** \$5,250,000 USD Subject to change.

**Cruising Speed:** 27 Knots (31.07 MPH)

[See full listing on our website](#)

**Location:** Fort Lauderdale, United States

**Max Speed:** 31 Knots (35.67 MPH)

---

# TABLE OF CONTENTS

---

<b>OVERVIEW .....</b>	<b>3</b>
<b>SPECIFICATIONS .....</b>	<b>4</b>
Basic Information .....	4
Dimensions .....	4
Speed, Capacities and Weight .....	4
Accommodations .....	4
Hull and Deck Information .....	5
Engine Information .....	5
<b>GALLERY .....</b>	<b>6</b>
<b>DETAILED DESCRIPTION .....</b>	<b>19</b>
<b>CONTACTS .....</b>	<b>28</b>

## OVERVIEW

---

4 staterooms, 5 heads, plus crew. Poise, performance, and flair converge in a luxury motor yacht whose sleek, sculpted profile captivates at first glance. Evoking a sea side penthouse, this splendid flybridge motor yacht provides light filled, breezy living spaces, tastefully appointed with sophisticated decor. Expansive outdoor zones deliver every indulgence, achieving a serene harmony between exterior and interior. Measuring 26 metres overall with a hull under 24, this new flybridge yacht qualifies for pleasure craft registration in many jurisdictions worldwide today.

# SPECIFICATIONS

---

## Basic Information

---

**Model Year:**  
2021

**Country:**  
United States

**Year Built:**  
2021

## Dimensions

---

**LOA:**  
85' 0" (25.91 m)

**Max Draft:**  
21' 4" (6.50 m)

**Beam:**  
20' 0" (6.27 m)

## Speed, Capacities and Weight

---

**Cruise Speed:**  
27 Knots (31.07 MPH)

**Water Capacity:**  
349 Gallons

**Max Speed:**  
31 Knots (35.67 MPH)

**Fuel Capacity:**  
1783 Gallons

## Accommodations

---

**Total Heads:**  
5

## Hull and Deck Information

---

**Hull Material:**

Fiberglass and Plastic Yachts

**Hull Designer:**

N/A

**Deck Material:**

Fiberglass

**Interior Designer:**

N/A

**Hull Configuration:**

N/A

## Engine Information

---

**Engines:**

2

**Engine Type:**

Inboard

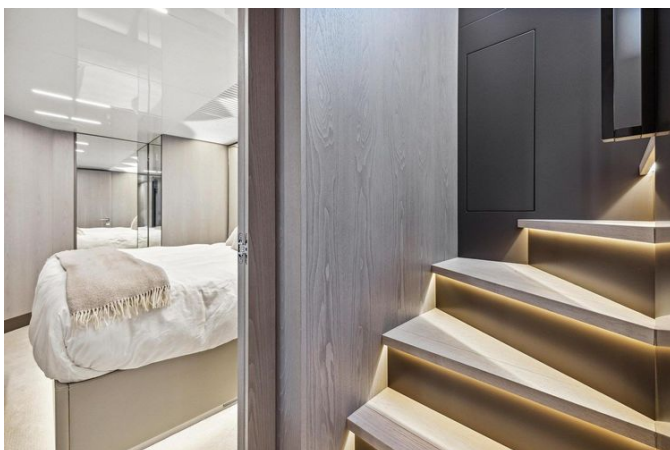
**Manufacturer:**

MAN

**Fuel Type:**

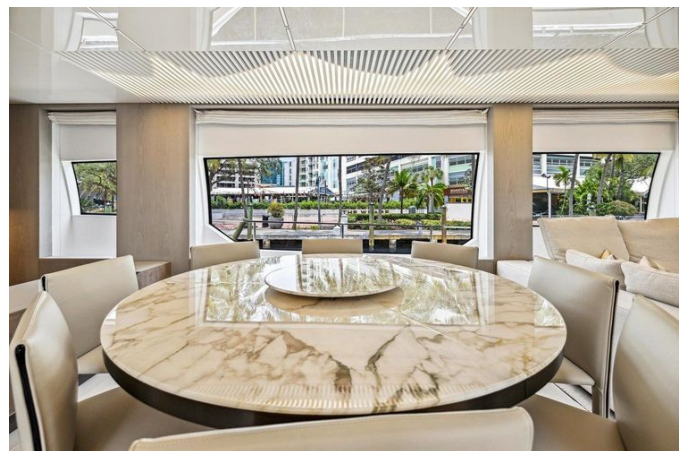
Diesel

# GALLERY

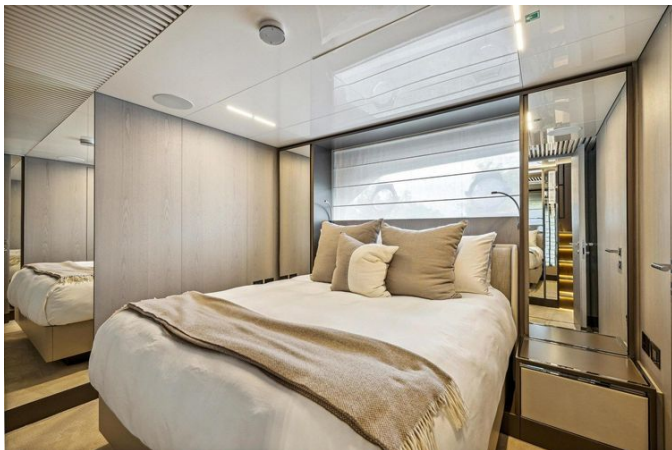








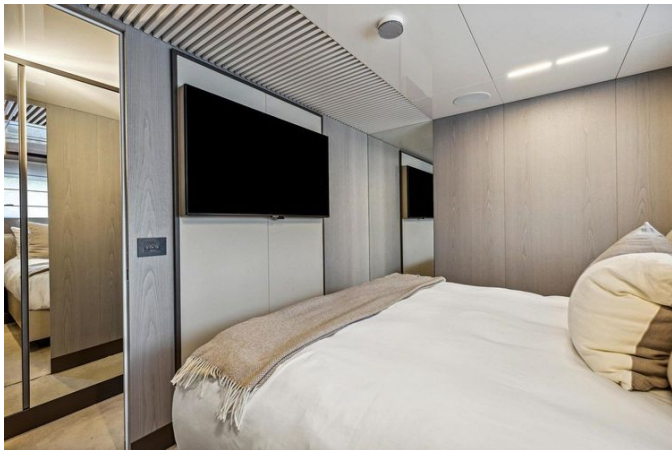


















---

# DETAILED DESCRIPTION

---

## Manufactured provided description

---

Exclusivity rules the waves. Spirited and seductive, the Ferretti Yachts 850 captures the heart at first glance, her angular flair and striking lines radiating majesty and style. Two built-in windows with integrated portholes impart a streamlined verve, and their generous dimensions bathe the interior in natural light while framing magnificent views. The main deck heightens the design's dynamism: a single glazed expanse sweeps through the entire superstructure, complementing the fore-and-aft hard top over the raised helm station. A special mechanism tilts the garage door open to unveil a beach area that eases below the water as a large submerged platform for guests to enjoy (and a handy way for the crew to manoeuvre the tender). Covered walls, floor-to-ceiling windows, billowy curtains, and plenty of freestanding furnishings define a concept that is metropolitan yet liveable, ultracontemporary yet warm—and all in consummate Ferretti Yachts style.

## Features & upgrades

---

Protected by an engine warranty until April 2026, this yacht is powered by ET3-compliant MAN 1900 HP engines and steadied by zero-speed stabilizing fins, with extra insulation between the engine room and the master cabin for serene cruising. The engine room is meticulously appointed with a Spot Zero system, an air-conditioning system, additional lighting, and upgraded Onan twenty-nine kW generators complemented by a smoke separator for each generator (22.5–27 kW), three inches. Mechanical and utility enhancements include a centralized Reverso system for oil, inverter, and generator changes, a watermaker with Recovery Aquamatic 900-2, a thirty HP stern thruster, an automatic cable reel with remote control, shore freshwater intake, a steel

anchor, a tender launching system, and predisposition for davit installation on the flybridge. The exterior is equally refined with teak installed on the sponsons and a teak floor with gray caulking on the main deck and flybridge, a hardtop with a glass rooftop, underwater lights, a canopy with four carbon poles at the bow, an aft garage curtain, an electrically controlled large rectangular searchlight, and a flap angle indicator on the flybridge.

On the flybridge, comfort and entertainment reign with an A/C and heating system, a Gaggenau grill plus teppanyaki, an additional refrigerator, two sofas, a flybridge table varnished in teak, and a fifty-five inch TV. Atmosphere and safety are elevated by strip LED lighting under the flybridge seats, additional lighting across the flybridge, LED lights at the bow, prewiring for an illuminated boat name, and CCTV camera coverage. A fixed cockpit control station with protective cover adds confident command.

The helm and navigation suite feature a full Simrad navigation package with a twenty-four inch monitor, a Simrad IS40 multidata display, AIS system, Sirius system, a premium internet package, and a leather pilot seat paired with an electrically adjustable helm seat on the main deck. Entertainment is upgraded throughout with an advanced audio-video system, an Apple TV system, a TV SAT HD7 antenna with a dome for KVH TV6, and satellite TV receivers serving all cabins, the flybridge, salon, galley, and crew area. An electric raising device for the TV complements a comprehensive screen selection that includes a sixty-five inch TV in the salon, forty-nine inch TVs in the master, VIP, and port guest cabins, twenty-four inch TVs in the additional guest cabin, galley, and crew cabin, and the aforementioned flybridge display.

The interior is curated with Miele appliances in the galley, a dedicated galley audio package, tubular LED lights under the galley cupboards, and wooden flooring on the main deck balanced by carpeting on the lower deck. The salon is enhanced by an upgraded bar unit, bar stools, a refrigerator within the salon bar furniture, an additional refrigerator, a wine cooler, a coffee table, a main

deck salon rug, elegant curtains, and an upgraded modular bar with two refrigerators and ice makers. Furnishings include a dining table and dining chairs by Minotti, along with a Minotti sofa on the main deck. Across all accommodations, marble graces every bathroom and leather upholstery enriches the cabins, with upgraded VIP and guest cabins ensuring elevated comfort. Ambient lighting continues inside with strip LEDs under beds in all cabins, one-touch up/down electric curtains in the salon and master cabin, one-touch up/down electric curtains in the VIP and guest areas, and one-touch up/down electric blinds in the VIP and guest spaces.

## Main deck

---

From the teak aft platform, an electro hydraulic foldaway bathing ladder and a hot/cold fresh water shower integrated into the steps ensure effortless access to the sea, while the illuminated aft garage is reached via an electro hydraulic submersible hatch laid in teak on the inside. A telescopic stainless steel and teak gangway with electro hydraulic movement, two remote controls, and automatic stanchions streamlines boarding, and a 230 V, 15 m shoreline cable together with storage space in the starboard support adds practical convenience at the dock.

Teak continues across the deck and cockpit flooring, where a teak cockpit table pairs elegantly with four cockpit chairs and three stern benches with sofa seating and a repositioning backrest for sunbed use. Entertainment and refreshment are served by an ice maker and two watertight cockpit loudspeakers with amplifier and remote control, complemented by discreet lighting throughout the cockpit and sidewalks. The aft tempered glass sliding door with stainless steel frames opens to the interior with a refined flourish. Forward, a generous living and sunbathing area at the bow presents a sofa with underneath storages and cover, two tables and additional storages, and a dedicated sun lounge pad with sunbathing cushions and two storages to keep

essentials neatly stowed.

Confident maneuvering is supported by a hydraulic bow thruster rated at 30 hp and a stern thruster. At anchor and in port, Bruce style anchors of fifty kilograms and thirty kilograms are served by two chains, powered by electric anchor windlasses—twin 2700 W—with controls at the bow, the main helm position, and the flybridge helm position. Mooring is further facilitated by foot controlled electric windlasses, two at 1500 W, positioned in the mooring stations, while ten fender covers bearing the Ferretti Yachts logo keep equipment smartly protected.

## Flybridge

---

Designed for effortless open air living, the flybridge combines confident capability with gracious comfort, beginning with a sophisticated broadband radar and full navigation lights to guide every passage. A skylight over the cockpit stairs bathes the area below in natural light, while discreet courtesy lighting sets an inviting evening ambiance. The helm is thoughtfully protected by tailored covers for both the helm position and the helmsman seat, preserving instruments and upholstery when not in use. Entertaining is elevated by an upgraded wet bar featuring two refrigerators and an ice maker, complemented by two Gagennau grills for gourmet cooking at sea. Guests can relax across three sofas with fitted covers and gather around the central table, all within easy reach of a powerful warning horn with compressor and liferafts for twelve people to ensure safety and peace of mind underway.

## Salon

---

Entering through the aft tempered glass sliding door with stainless steel frames, the salon unfolds into a refined living area with a plush sofa and coffee table, laid over fitted carpet with soundproof lining and softly illuminated by

ceiling courtesy lighting. Comfort is assured with efficient air conditioning, while entertainment is elevated by a 65-inch LED TV with Apple TV and a hi-fi home cinema 5+1 system with DVD player. Practical elegance includes a bookshelf and a cabinet with shelves, complemented by standard curtains on the aft door and on the side windows for privacy and light control. For effortless hospitality, a dedicated wine cooler and a 75-liter 24V cooler drawer keep refreshments perfectly chilled.

## Galley

---

Thoughtfully climate-controlled with air conditioning, the galley invites convivial dining with a dedicated area featuring seats and a table. Culinary capability centers on a Miele induction cooktop paired with a Miele convection oven, supported by an extractor fan and a dishwasher for effortless cleanup. Provisions are kept fresh in a full-size refrigerator/freezer, while overhead cabinets with shelves provide organized stowage. Natural light and sea air flow through two side windows with stainless steel openable portholes, and a sliding door connects the space to the galley lobby. Durable vinyl wooden flooring completes this refined, functional workspace.

## Engine room and mechanical

---

Within the meticulously organized engine room, access is effortless via two routes to the cockpit: a stainless-steel and teak ladder on the portside support and a dedicated hatch. Optimized airflow is assured by two air intakes with air/water separators and two electric ventilation fans, while bilge security is strengthened by an electric bilge pump and two change-over valves enabling emergency water pumping from the bilge. Fire protection is entrusted to an FM200 fire extinguishing system with automatic and manual control. Daily service is simplified by a fresh water outlet for filling and washing, a fuel tank

level indicator, comprehensive lighting, the main electric panel, and a portable lamp. Electrical power is delivered by twin 29 kW generators, including an auxiliary unit. Fuel is carried in a GRP tank of 6,750 liters with an integrated settling tank and discharge, and filtration is managed by two Racor diesel engine prefilters and two Racor fuel prefilters serving the generators. Cooling reliability is secured by two water filters for the engine cooling system and two water filters for the generator cooling system. Structural integrity and safe footing come from a watertight fore bulkhead and wooden non-slip flooring, while extended autonomy is delivered by a water maker and a Spot Zero water softener.

Astern, the garage is purpose-designed with room for a Williams 390 tender and is accessed via an electro-hydraulic submersible hatch finished with teak on the internal side. Serviceability is excellent thanks to three GRP inspection hatches with non-slip surfaces leading to the engine room, complemented by dedicated lighting.

## Mechanical

---

Engineered for confident handling, the yacht features a bow thruster with hydraulic power rated at 30 hp, complemented by a stern thruster for precise low speed maneuvering. The electric/hydraulic power steering delivers effortless control at the helm, while underwater silenced exhausts ensure a discreet acoustic footprint. A robust V Drive transmission optimizes power delivery, and comprehensive stabilization systems—enhanced by zero speeds stabilization fins—elevate comfort both underway and at rest. Responsive trim tabs (flaps) finely adjust the running attitude for a smooth, efficient ride.

## Systems

---

Safety and comfort on board are assured by a comprehensive suite of systems.

The engine room is protected by an FM200 FIREBOY fire extinguishing system with both automatic and manual control, augmented by portable fire extinguishers. Dedicated pull handles in the engine room enable the immediate shutdown of the engines and generator, the shutoff of two ventilation fans, and the activation of the fire-extinguishing system, while a smoke detection alarm system delivers vigilant early warning throughout. Climate control is designed for the most demanding conditions, with a supertropical air conditioning system serving all cabins, including the heads. The electrical architecture is robust and meticulously engineered. It features an automatic 24V battery charger for the engine batteries; a 12V low water loss auxiliary generator starting battery; a battery charger for the auxiliary service batteries complete with a switch to charge the 24V bow thruster, two in total; and a dedicated battery charger for the generator. Power management includes two battery disconnecting switches—one mechanical in the engine room and one electronic in the cockpit—together with two manual battery disconnecting switches for the generators, plus both a mechanical battery parallel switch in the cockpit and an instant electric battery parallel switch at the main helm position. Distribution and protection are handled by a breaker box, a Carling Switch 100A for 240V shore supply, ground fault interrupters in all six heads plus the galley and engine room, and a shore power ground fault interrupter rated at 100A and 30 mA. Shore interface and conversion are strengthened by two 100A 240V shore plugs and two 25 kVA isolation transformers. The yacht carries a 29 kW generator and an auxiliary 29 kW generator, supported by a 12V low water loss main generator battery, a group of 24V low water loss batteries for engine starting, and a 24V low water loss group of auxiliary service batteries. Additional highlights include cathodic protection with zinc anodes; ground connection for seawater intake and railings; double 120V internal sockets in every box; LED lighting inside and out with 24V lighting throughout; a 24V dc/120V ac inverter for the galley fridge; a 24V dc/230V ac inverter for services; preparation for decoder with 120V

cabling, F connectors, and TV SAT antenna cables in all cabins; and preparation for a TV system in the crew area with 120V cabling, F connectors, and TV antenna cables.

The bilge system is designed for redundancy and rapid response, comprising two electric pumps for bilge drainage serving the engine room and midship, complemented by three additional electric pumps—two in the engine room and one midship. An emergency bilge suction pipe in the engine room is routed through the engine cooling pump, and a multipurpose electric pump handles bilge, grey water, and black water as needed.

Sanitary and water management are equally thorough. An automatic electric grey-water discharge pump works alongside a black-water sump with an automatic electric pump. Storage includes a 330-liter black-water tank with three-quarters and full gauge and an outboard outlet, a 1,320-liter fresh-water tank, and a 330-liter grey-water tank. Systems integration extends to a connection of the crew WC to the holding tank, an electric WC system, and a 24V freshwater autoclave pump with electronic control. Practicalities are completed by a three-way grey-water valve in the galley, independent seawater intakes with filters for both the watermaker and the air conditioning, a seawater fire-fighting system with chain wash-down, and an 80-liter 230V water heater.

## Disclaimer

---

The company presents the particulars of this vessel in good faith, yet makes no guarantee or warranty regarding the accuracy of the information provided, nor any warranty as to the vessel's condition. Prospective buyers are encouraged to instruct their agents or surveyors to investigate and verify any details they wish to have confirmed. This vessel is offered subject to prior sale, price change, or withdrawal from the market without notice.

## Main helm

---

At the main helm, air conditioning ensures a cool, composed command environment, with a dedicated helmsman seat set over a refined wooden floor. Effortless control comes through Electric/Hydraulic power steering and electronic controls for the engine clutch and throttle with easy-dock and auto-troll functions, complemented by an instant parallel battery for confident starts. Navigation and monitoring are comprehensive, uniting a magnetic compass; radar, chartplotter and GPS; an Eco-sounder function with LCD color display and depth sounder; a rudder angle indicator; and a main helm position with full instrumentation, all overseen by a monitoring integrated system with touch-screen display. Precision and convenience continue with an automatic pilot control unit, VHF, an electronic digital chain counter, barometer, clock and hygro thermometer, and two windscreen wipers with timer, while the Interactive Digital Manual on iPad keeps critical information at your fingertips.

# CONTACTS

---

Shestakov Yacht Sales is a brokerage company specializing in the sale and service of yachts worldwide. The company offers services for buying and selling both new and used motor yachts, sailing vessels, and luxury superyachts. They also provide yacht registration, insurance, technical maintenance, crew selection, and charter organization services across the U.S., Canada, Latin America, the Caribbean, and the Bahamas.

The founder and lead broker of the company is Andrey Shestakov, a licensed and certified expert with extensive experience in marine engineering and shipbuilding.

The company has an extensive network of partnerships with major yacht manufacturers worldwide and provides services in multiple languages, including Russian, Ukrainian, Spanish, and English. The office is in Dania Beach, Florida, USA.

For more information and to view available yachts, you can visit the company's official website: <https://shestakovyachtsales.com>

## Contact details

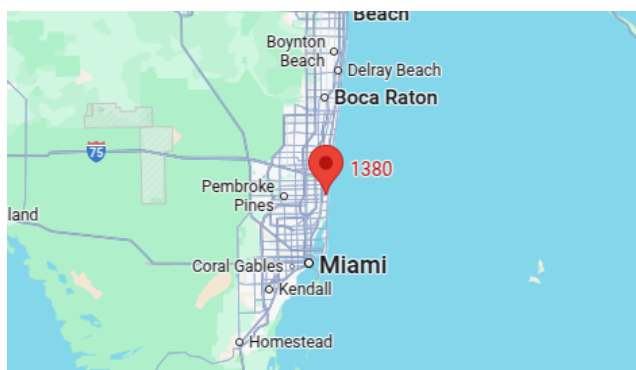
---

**Phone:** +1(954)274-4435

**Email:** [andrey@shestakovyachtsales.com](mailto:andrey@shestakovyachtsales.com)

## Address

---



1380 Weeping Willow Way, Hollywood,  
Florida 33019