

## KNOT WOKE - AZIMUT YACHTS



**Builder:** [Azimut Yachts](#)

**Beam:** 21' 0" (6.40 m)

**Year Built:** 2009

**Max Draft:** 19' 2" (5.83 m)

**Model:** Flybridge

**Price:** \$2,375,000 USD Subject to change.

[See full listing on our website](#)

**Location:** Miami, United States

**LOA:** 85' 0" (25.91 m)

---

# TABLE OF CONTENTS

---

<b>OVERVIEW .....</b>	<b>3</b>
<b>SPECIFICATIONS .....</b>	<b>5</b>
Basic Information .....	5
Dimensions .....	5
Speed, Capacities and Weight .....	5
Accommodations .....	5
Hull and Deck Information .....	6
Engine Information .....	6
<b>GALLERY .....</b>	<b>7</b>
<b>DETAILED DESCRIPTION .....</b>	<b>22</b>
<b>CONTACTS .....</b>	<b>33</b>

## OVERVIEW

---

An 85 foot motor yacht from 2009, currently lying in the United States and presented for viewing at the Palm Beach International Boat Show, March 25–29, she carries the assurance of a true bluewater cruiser while offering the space and refinement of a contemporary luxury residence. Built with a robust fiberglass composite hull and deck and spanning a commanding 21 foot beam, she greets guests with generous volumes and thoughtful circulation that make every passage and port call feel like an occasion.

The main deck unfolds with a sweeping, light filled salon arranged for sociability and repose, flowing naturally aft to a sheltered cockpit that invites alfresco dining and relaxed entertaining. Broad side decks and expansive sun and shade areas provide options for morning coffee at anchor or evening cocktails beneath the stars, while interior finishes and ergonomics are restrained and tasteful, creating a calm, contemporary ambience equally suited to intimate evenings or lively gatherings.

Below decks, accommodations are configured for extended cruising, with well proportioned private staterooms enhanced by an unusually generous six heads, a level of ensuite convenience that markedly elevates guest comfort. Intelligent storage, service oriented detailing and systems accessibility underscore her long range readiness, while a chef friendly galley and welcoming dining spaces make provisioning and shared meals pleasurable whether underway or alongside.

Power comes from twin Caterpillar inboard diesel engines, a combination that supplies quiet, dependable thrust and the reliability discerning yachtsmen expect. Fuel capacity is substantial at 2,055 gallons, and a 465 gallon freshwater reserve supports sustained itineraries from island passages to open water cruising. The fiberglass construction delivers enduring strength, an assured motion underway and low maintenance longevity, instilling

confidence across varied conditions and cruising grounds.

This yacht will appeal to those who value refined workmanship and versatile living spaces where elegance meets practicality. Ready for everything from celebratory weekends to extended seasons of exploration, she promises to elevate each mile with composure, range and style. More information will follow, with private showings available throughout the Palm Beach International Boat Show, March 25–29.

Keywords: Motor Yacht, Luxury Yacht, Cruising Yacht, Bluewater Cruiser, Fiberglass Yacht, Diesel Inboard, Caterpillar Powered, 85 Foot Yacht, United States Yacht, Long Range Cruiser

# SPECIFICATIONS

---

## Basic Information

---

**Category:**  
Motor yachts

**Year Built:**  
2009

**Sub category:**  
Motor Yacht

**Country:**  
United States

**Model Year:**  
2009

## Dimensions

---

**LOA:**  
85' 0" (25.91 m)

**Max Draft:**  
19' 2" (5.83 m)

**Beam:**  
21' 0" (6.40 m)

## Speed, Capacities and Weight

---

**Water Capacity:**  
465 Gallons

**Fuel Capacity:**  
2055 Gallons

## Accommodations

---

**Total Heads:**  
6

## Hull and Deck Information

---

**Hull Material:**

Fiberglass and Plastic Yachts

**Hull Designer:**

N/A

**Deck Material:**

Fiberglass

**Interior Designer:**

N/A

**Hull Configuration:**

N/A

## Engine Information

---

**Engines:**

2

**Engine Type:**

Inboard

**Manufacturer:**

Caterpillar

**Fuel Type:**

Diesel

# GALLERY







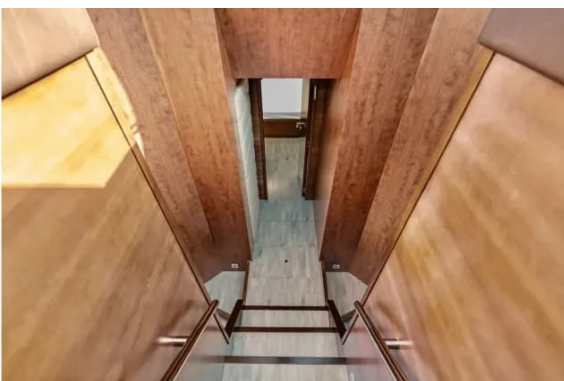
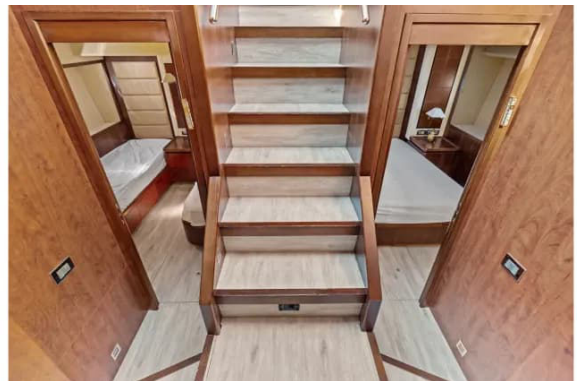






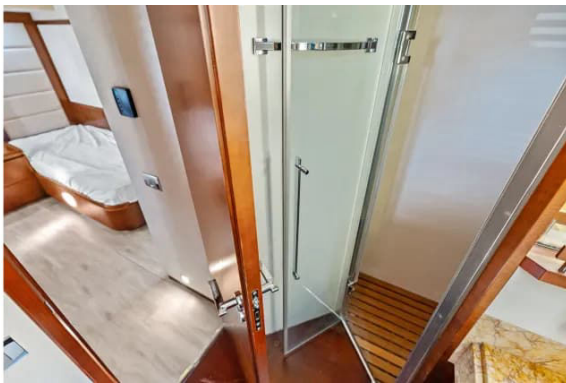




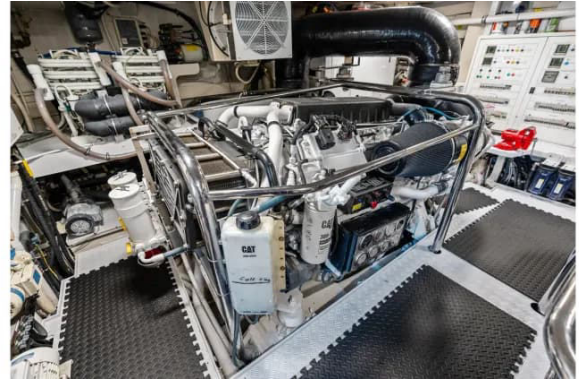














---

# DETAILED DESCRIPTION

---

## Swim platform

---

A wide integral fiberglass swim platform is sheathed in teak, setting a warm and surefooted tone at the waterline. Generous molded steps, three to port and three to starboard, rise to the aft deck with polished stainless steel handrails for confident passage. Shore services are neatly handled by twin 100-amp Cablemaster systems housed to starboard in a locker, complemented by a Hubbell telephone and television inlet discreetly placed in the transom locker. Comfort and practicality are immediate, with a freshwater shower and deck washdown to starboard, waste pump-out in the starboard locker, and two courtesy lights port and starboard to illuminate evening returns. A portside passerelle deploys for elegant boarding, while coordinated outdoor furniture graces the flybridge, aft deck, and foredeck to create multiple alfresco lounges across the yacht.

## Cockpit

---

Sheltered by a fiberglass overhead with recessed lighting and two stereo speakers, the cockpit pairs a teak-over-fiberglass deck with robust stainless steel rails, stanchions, and matching gates that frame the swim platform to port and starboard. Docking is effortless, with Lofrans warping windlasses and stern bollards mirrored port and starboard. A graceful curved aft bench, refitted with new cushions in 2011, faces a handsome teak dual-pedestal table forward, easily joined by deck chairs for lingering meals. A sliding stainless steel door glides forward into the salon, while passerelle controls are neatly integrated into the port handrail at the dinette, keeping operation intuitive and unobtrusive.

## Flybridge

---

Teak overlays the fiberglass deck beneath a retractable canvas top, where a tinted windscreen in a stainless steel frame wraps a commanding helm. The Azimut steering wheel fronts a Zenith compass, Raymarine VHF radio, Raytheon ST6002 autopilot, ZF electronic clutch and throttle controls, two Caterpillar digital engine displays, an American bow and stern thruster control panel, and an ITT Jabsco searchlight control panel with intercom switches. Newly added navigation power comes from two 12" Garmin GPSMAP multi-function displays and two Garmin data instruments. Storage compartments line port, while a double bench-style helm chair to starboard conceals storage and secures under a fitted cover. A large sun pad sprawls port of the helm, and just aft, a well-appointed wet bar brings a sink with hot and cold faucet, an Isotherm refrigerator, and a Fusion stereo. The radar arch completes the scene with recessed lights, four JL Audio stereo speakers and a subwoofer, two remote-operated searchlights, a mast carrying the anchor light, forward navigation light, and stern light, and a VHF antenna.

## Flybridge deck

---

The flybridge deck continues the theme of teak over fiberglass underfoot, flowing aft to a molded non-skid section for secure footing. Access is effortless via the stairwell down to the aft deck, and safety is underscored by two 24" life rings positioned port and starboard and stainless steel railings aft. Tender and toy handling is simple with an Opacmare davit, while open-air entertaining is elevated by a Lynx stainless steel barbecue grill. Two aft deck drains manage runoff to keep the area dry and ready for use.

## Bow

---

Forward, a teak-over-fiberglass deck is guarded by stainless steel bow rails and stanchions, with a flagstaff proudly at the stem. Heavy-duty stainless steel bow bollards with hawse eyes mirror port and starboard, while an engineered stainless anchor chute and windlass platform support a Lofrans anchor windlass feeding an approximately 250-lb Fjord anchor on approximately 300' of chain. Dual hatches port and starboard lead forward to the chain locker, with an additional hatch accessing the Bosun's locker in the forward superstructure. Practicality continues with deck courtesy lights, port and starboard lockers in the trunk cabin, and a freshwater shower connection with a hot/cold faucet in the starboard locker. Centerline, a sun lounge with cushions invites relaxation beneath a sun shield for the pilothouse windows. A portside door opens directly to the galley, while spring cleats and bollards, fuel fills, and water fills are duplicated port and starboard. Movement and readiness are assured with an entrance to the crew companionway starboard aft, navigation lights port and starboard, recessed lights in the overhang—four to port and four to starboard—two windshield wipers, and two fire stations: one in a starboard aft side deck locker and another in the chain locker, each carrying 20 m of 50 mm hose.

## Salon

---

Entry from the aft deck is through sliding doors dressed with drapes, revealing a salon grounded by a cherry sole and crowned by a vinyl overhead with a cherry recess. A recessed soffit with rope lighting and additional recessed overhead lights create a warm, layered glow. To port, a U-shaped leather sofa with abundant storage faces window drop curtains with a complementary drape, while to starboard a leather loveseat balances the conversation. Climate and entertainment are at your fingertips via Cruisair SMX IR air conditioning

control, a NuVo stereo amplifier, an Arcam DVD player, and a Samsung flat-panel television that rises smoothly on an electric lift.

## Dining

---

The dining area continues the rich cherry sole beneath a vinyl headliner with recessed lighting and a wood recess, where window drop shades and valance rope lighting frame a glass-topped table with eight chairs. Entertaining is refined by a Sub-Zero wine cooler and a cherry buffet that gracefully delineates the dining space from the salon.

## Galley

---

Entered to starboard forward of the salon, the galley presents a cherry sole under overhead panels with recessed lights and gleaming stainless steel countertops with matching backsplash. Twin stainless steel sinks pair with a single-lever hot/cold faucet, while cold storage is anchored by a Sub-Zero refrigerator. Culinary capability is complete with a Gaggenau five-burner stovetop under a dedicated work light with exhaust fan, a Gaggenau oven, a new Bosch dishwasher, and a General Electric microwave. Thoughtful stowage abounds in built-in cabinets, and service is streamlined by two pass-throughs to the dining salon, each with a tambour door on track and three overhead lights. Climate is tuned via Cruisair SMX IR controls, and a watertight door opens directly onto the starboard side deck.

## Day head

---

Conveniently positioned starboard aft of the galley, the day head features a cherry sole beneath a vinyl overhead with recessed lights. A Tecma toilet and a vanity with a porcelain sink, hot and cold faucet, mirrored face, and storage

below provide practical elegance. A headlight with drop shade, together with an exhaust blower, keeps the space bright and fresh.

## Lower helm station

---

The lower helm centers on two 12" Garmin GPSMAP multifunction displays, set beneath a vinyl overhead with dedicated lighting and in front of an electrically controlled bench helm chair. Navigation and control are comprehensive, with a White Star compass, ITT Jabsco searchlight control, an American bow and stern thruster control panel, ZF electronic engine controls, and port and starboard CGT touch screen displays to the engines. Feedback and ride are refined through a TRAC Stabilizer control panel, rudder angle indicator, and a Smart Power Management screen overseeing the central hydraulics.

Communications and awareness are enhanced by a KVH Via satellite broadband antenna controller unit, a Came CCTV control panel, a Raymarine Ray 218 VHF radio, and a Raymarine ST6002 autopilot. Comfort and convenience join a portside dinette with curved bench seating, storage, and a wood table, Cruisair SMX IR air conditioning control, a Raymarine ST70 knot log and ST70 depth display, and a Yacht Controller wireless dockside control.

## Master stateroom

---

The master stateroom is hushed and gracious, with a carpeted sole and a vinyl overhead accented by indirect lighting, a custom wood panel, and recessed lights. Overhead soffits carry two focused reading lights at the head of a centerline king berth with integrated storage. Built-in nightstands flank port and starboard, each accompanied by a porthole with a drop shade, while to starboard a vanity with lift-up mirror and storage answers daily ritual. A Panasonic LCD television, telephone jack, walk-in closet, Cruisair SMX IR air conditioning control, and a central vacuum inlet complete this private retreat.

## Master head

---

Entered port forward from the master, the master head is finished with a marble sole and a mica overhead lit by four recessed lights. A Tecma toilet and twin marble vanities to port and starboard host two porcelain sinks with individual hot-to-cold faucets and storage below, while an outboard porthole with curtains adds soft daylight. The shower stall features a hot and cold shower head with wall-mount water jets and a grate sole for secure footing.

## Port stateroom

---

This welcoming guest space offers a carpeted sole and a vinyl overhead with recessed lights and a wood insert. An inboard queen berth is served by a nightstand with storage, a telephone jack, and an outboard porthole with curtains. Entertainment comes via a Philips LCD television, while climate is managed by a Cruisair SMX IR control. Safety is addressed with a Kidde 10BC dry chemical fire extinguisher. A private entrance leads directly to the head.

## Port stateroom head

---

The port head presents a cherry sole and overhead panels with recessed lighting. An outboard porthole with mini-blinds brightens a vanity with a porcelain sink, hot/cold faucet, and storage. The space includes a Tecma toilet, a beveled mirror, and a shower stall with a door, wall-mount shower head with hot and cold faucet, body jets, an overhead light, and a grate sole.

## Starboard stateroom head

---

Finished with a cherry sole and a mica overhead with recessed lights, the starboard head pairs an outboard porthole with mini-blinds to a marble vanity

with a porcelain sink, hot/cold faucet, and storage beneath. A Tecma toilet and a shower stall with a door, hot and cold shower head on a wall mount, water jets, overhead light, and grate sole complete the suite. A beveled mirror adds clarity and depth.

## VIP stateroom

---

The VIP stateroom is serene, with a carpeted sole and vinyl overhead softly lit by indirect lighting. A queen berth is flanked by nightstands to port and starboard, with two swing-arm lamps and focused reading lights set in the soffit above the head of the bed. Natural light comes through outboard deadlights to port and starboard, each dressed with curtains, and hanging lockers on both sides are fitted with their own lights. A telephone jack, a Cruisair SMX IR air conditioning control panel, a Kidde dry chemical fire extinguisher, and a Philips television complete this refined haven.

## VIP head

---

Entered port aft within the VIP, the head features a cherry sole beneath overhead paneling with three recessed lights. A vanity with a porcelain sink, hot/cold faucet, and ample storage complements a Tecma toilet. An outboard porthole concealed behind a sliding mirrored door adds daylight, while the shower stall encloses water jets, a hot and cold shower head, a grate sole, and an overhead light for comfort and safety.

## Crew companionway

---

The crew companionway connects directly from the swim platform, engine room, and starboard side deck, lined with a vinyl overhead and wall covering. Three steps descend from the swim platform into a practical service area with

access to the port steering hydraulic cylinder beneath the dinette. Laundry is handled by a Miele T8013C dryer and a Miele W3033 washer, both replaced in 2018, while a Cruisair air conditioning control panel, cherry paneling and molding, a cherry table, a Sony stereo, an aft dinette, and two stereo speakers create a comfortable break space. An Isotherm refrigerator stands ready for refreshments, and a watertight door opens to the engine room with an emergency escape route also provided. Recessed overhead lights illuminate the entire passage.

## **Under forward companionway**

---

Beneath the forward companionway, a hold light reveals the TRAC stabilizer control box, the aft-positioned blackwater tank with its blackwater pump, and the graywater system with its pump and an additional gray water tank located aft of the blackwater tank. Two hot water circulating pumps and a high water alarm further attest to the yacht's meticulous systems engineering.

## **Port crew's quarters**

---

The port crew cabin is trimmed with a vinyl overhead fitted with three lights and offers two single outboard berths with individual reading lights. An outboard porthole with curtains brings in daylight, while an inboard hanging locker organizes uniforms. Practical access to the port rudder and a shower sump tank with pump under the sole underscore serviceability, and climate is set by a dedicated Cruisair air conditioning control.

## **Starboard crew's quarters**

---

To starboard, the crew cabin features a durable laminate sole beneath a vinyl overhead with three recessed lights. An outboard upper and lower berth

arrangement adds flexibility, with two drawers beneath the lower berth for stowage. An outboard porthole with curtains brightens the space, while an inboard hanging locker keeps gear ready. Forward of the upper berth, an access panel leads to two 30-kg CO2 cylinders. A dedicated Cruisair air conditioning control maintains comfort.

## Crew quarters head

---

Accessible from the crew companionway, the head is finished with a wood grate sole and two recessed lights. A marble countertop with sink sits beneath an outboard mirrored medicine cabinet paired to a porthole, and a Tecma toilet provides reliable service. Ventilation is aided by an exhaust blower, and a 110-volt GFCI outlet in the overhead ensures safe power. The shower features a handheld head on a hose with a mixing valve and wall mount for versatility.

## Engine room

---

The engine room is arranged for performance and service, beginning with a diamond plate deck and anchored by two Kohler 32 kW generators breathing through dedicated exhaust/water separators. Airflow is balanced by two extractors and two induction blowers. Fuel filtration is robust, with dual Racor 1000 filters to each engine and dual Racor 500 filters to each generator, while dripless shaft seals and a high water alarm add seaworthy confidence. Bilge management is comprehensive with a hand-operated bilge pump forward to starboard, an electric/automatic bilge pump, and a 24-volt bilge pump feeding a six-compartment manifold. Fire suppression and washdown needs are served by a 220-volt fire pump. Cooling capacity is refreshed by new A/C chillers in 2015, alongside rebuilt in 2015 air conditioning raw-water cooling pumps and chilled-water circulation pumps, both port aft. Electrical authority is clear: main engine battery cut-off switches aft; a lube oil tank centerline aft

below deck feeding an oil change pump and manifold; an emergency battery parallel switch; a manual fuel transfer pump forward to port; a 12-volt Group 30 battery with cutoff switch to each generator; a day fuel tank forward in the engine room; auxiliary raw water intakes forward to port and starboard; two SAE shore power conditioners/transformers with a digital meter replaced in 2018; sixteen 6-volt batteries on centerline for ship's service; two 8D batteries to each engine aft of each block; a Mastervolt 24-volt 50-amp charger for the engines; two Mastervolt 24-volt 100-amp chargers for ship's service; and a Mastervolt 12-volt charger for the generators. Command and control are equally comprehensive, with ZF Cruise Command control boxes, Caterpillar gauge clusters port and starboard, two electric/hydraulic pumps feeding the central hydraulic system, hydraulic cooling pumps aft, a hydraulic reservoir aft, an electric/hydraulic pack for the passerelle, a diverter valve plumbed off the starboard engine's raw water intake for emergency bilge pumping, an Idromar watermaker, a CCTV camera, an intercom with headset, and a watertight entry door aft. New risers and a muffler installed in 2015 underscore the diligence of the machinery updates.

## Rudder compartment

---

Entered from the crew's quarters, the rudder compartment is secured by a safety cage illuminated by a hold light and provides direct access to the steering gear. Services include a 110-volt GFCI outlet and an intercom speaker, with a hydraulic steering actuator, hydraulic steering pump, and a rudder feedback sensor ensuring precise control. Shore power handling is powerful and tidy with two 100-amp Cablemaster shore cord reels and collector bins. An emergency steering wheel with isolation valves stands ready, and a hydraulic pack for the trim tabs completes the equipment list. A Brownie's Yacht Diver dive tank compressor further enhances operational readiness.

## Under bow stateroom sole

---

Beneath the bow stateroom sole lie two electric water heaters and the bow thruster unit with its associated hydraulics, all centrally positioned for balanced weight and straightforward service.

## Disclaimer

---

The details of this yacht are offered in good faith but without guarantee of accuracy or warranty of condition. This vessel is offered subject to prior sale, price change, or withdrawal from the market without notice, and is presented as a convenience to clients without an intent to convey direct representation of a specific yacht.

# CONTACTS

---

Shestakov Yacht Sales is a brokerage company specializing in the sale and service of yachts worldwide. The company offers services for buying and selling both new and used motor yachts, sailing vessels, and luxury superyachts. They also provide yacht registration, insurance, technical maintenance, crew selection, and charter organization services across the U.S., Canada, Latin America, the Caribbean, and the Bahamas.

The founder and lead broker of the company is Andrey Shestakov, a licensed and certified expert with extensive experience in marine engineering and shipbuilding.

The company has an extensive network of partnerships with major yacht manufacturers worldwide and provides services in multiple languages, including Russian, Ukrainian, Spanish, and English. The office is in Dania Beach, Florida, USA.

For more information and to view available yachts, you can visit the company's official website: <https://shestakovyachtsales.com>

## Contact details

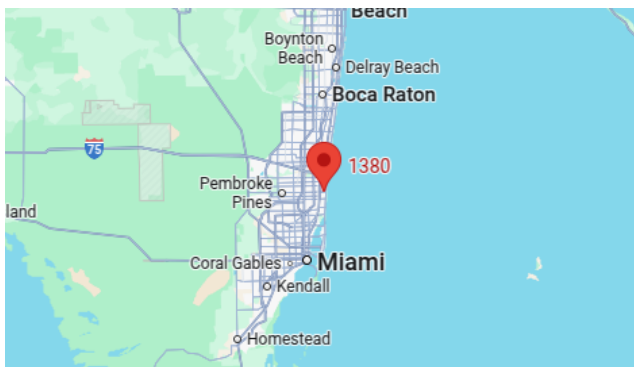
---

**Phone:** +1(954)274-4435

**Email:** [andrey@shestakovyachtsales.com](mailto:andrey@shestakovyachtsales.com)

## Address

---



1380 Weeping Willow Way, Hollywood,  
Florida 33019