

# SUNSEEKER 86 YACHT - SUNSEEKER



**Builder:** [Sunseeker](#)

**LOA:** 86' 0" (26.31 m)

**Year Built:** 2016

**Beam:** 21' 0" (6.43 m)

**Model:** Sunseeker 86

**Min Draft:** 22' 5" (6.83 m)

**Price:** \$3,034,009.12 USD Subject to change.

**Max Draft:** 30' 1" (9.17 m)

[See full listing on our website](#)

**Location:** Hong Kong, China

**Cruising Speed:** 22 Knots (25.32 MPH)

**Max Speed:** 30 Knots (34.52 MPH)

---

# TABLE OF CONTENTS

---

<b>OVERVIEW .....</b>	<b>3</b>
<b>SPECIFICATIONS .....</b>	<b>5</b>
Basic Information .....	5
Dimensions .....	5
Speed, Capacities and Weight .....	6
Accommodations .....	6
Hull and Deck Information .....	6
Engine Information .....	7
<b>GALLERY .....</b>	<b>8</b>
<b>DETAILED DESCRIPTION .....</b>	<b>19</b>
<b>CONTACTS .....</b>	<b>21</b>

## OVERVIEW

---

Built in England in late 2016 and first launched in 2017, this beautifully preserved Sunseeker 86 Flybridge Motor Yacht now awaits a new owner. With true superyacht lineage and graceful, timeless lines, she marries luxurious appointments, assured performance, and refined composure.

Carefully maintained from new by a meticulous sole owner and a devoted crew, her condition is exceptional. Arranged in a three-cabin, galley-down configuration, this 86-footer is driven by twin MTU engines producing a combined 3,200 hp, offering confident, polished cruising. As both a luxury yacht and a capable performance cruiser, she is equally at home on relaxed family voyages or hosting elegant gatherings.

Step through the cockpit into a chic salon where soft leather seating is set against rich high-gloss walnut joinery, creating an atmosphere of sophisticated comfort. The main deck favors sociable living with an expansive open-plan lounge, while the galley sits on the lower deck to preserve light and flow on the principal level. Below, three sumptuous staterooms provide overnight accommodation: a full-beam owner's suite, a tranquil VIP cabin, and a flexible guest cabin, each designed for privacy and quiet comfort.

Above, the generous flybridge invites al fresco living with fresh breezes, sweeping 360-degree vistas, and a large dining table comfortably seating around six. Aft on the flybridge a dedicated storage area stows kayaks and watertoys, keeping the deck uncluttered for relaxation. This planing flybridge yacht combines generous volume, capability, and elegant seafaring lines.

Available immediately, this striking Sunseeker 86 is perfect for owners who delight in entertaining, coastal exploration, and immediate access to the water. Enquire for viewings and further information on this exceptional flybridge superyacht.

Remark: The tender shown in the pictures and video is not included in the sale.



# SPECIFICATIONS

---

## Basic Information

---

**Category:**  
Motor yachts

**Year Built:**  
2016

**Sub category:**  
Motor Yacht

**Country:**  
China

**Model Year:**  
2016

## Dimensions

---

**LOA:**  
86' 0" (26.31 m)

**Beam:**  
21' 0" (6.43 m)

**Min Draft:**  
22' 5" (6.83 m)

**Max Draft:**  
30' 1" (9.17 m)

## Speed, Capacities and Weight

---

**Cruise Speed:**

22 Knots (25.32 MPH)

**Water Capacity:**

369.84 Gallons

**Max Speed:**

30 Knots (34.52 MPH)

**Fuel Capacity:**

2905.89 Gallons

**Gross Tonnage:**

129 Pounds

## Accommodations

---

**Sleeps:**

8

**Crew Cabin:**

2

**Total Heads:**

5

**Crew Berths:**

3

## Hull and Deck Information

---

**Hull Material:**

Fiberglass and Plastic Yachts

**Hull Designer:**

Sunseeker International

**Deck Material:**

Fiberglass

**Interior Designer:**

Sunseeker International

**Hull Configuration:**

Deep Vee

## Engine Information

---

**Engines:**

2

**Engine Type:**

Inboard

**Manufacturer:**

MTU

**Fuel Type:**

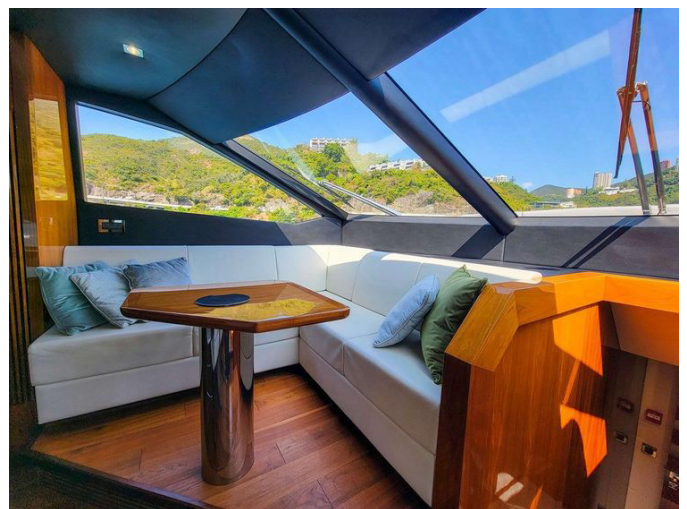
Diesel

# GALLERY

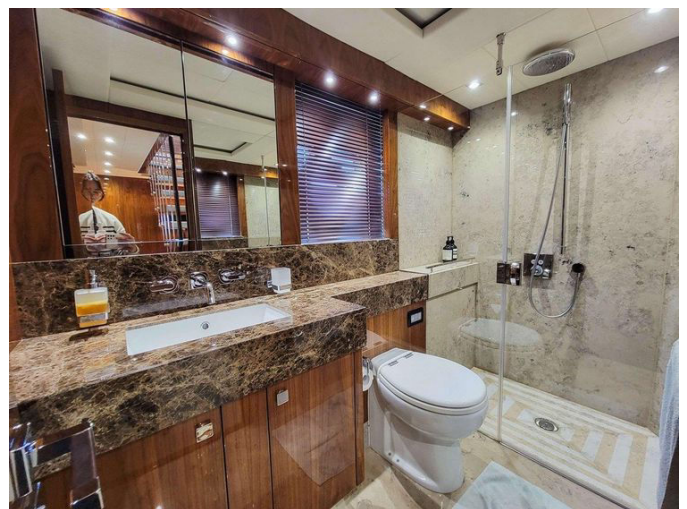
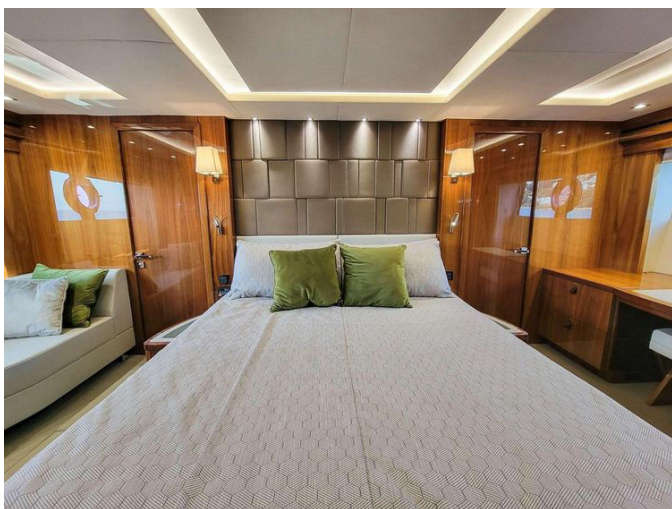


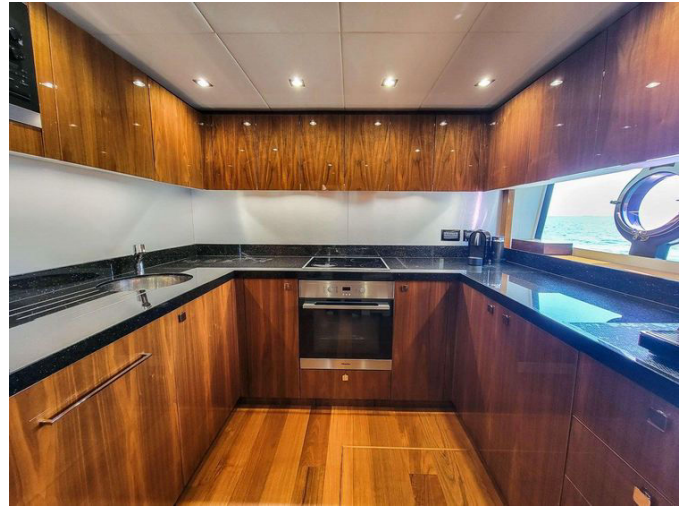








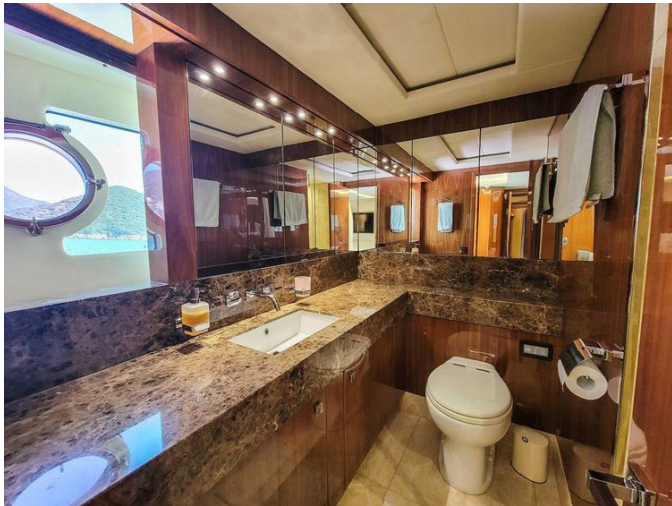












Scan to watch  
the video of  
the boat.



---

# DETAILED DESCRIPTION

---

## Details

---

An inviting interior welcomes you with an open-plan main deck saloon where a comfortable living room, complete with sofa and lounge chairs, flows naturally into a dining area centered around a round table for eight, creating an effortless space for leisure and entertaining. Entertainment rises at the touch of a button via a high-low TV system, while an interior helm station keeps the voyage effortlessly under command, allowing navigation and social life to coexist in comfort. Below, the lower deck is arranged for restful privacy: a full-beam master cabin features an ensuite with a double bed, joined by a bow VIP cabin, also ensuite with a double bed, and a guest cabin offering an ensuite with two single beds, each space designed for refined comfort on extended passages. The galley is comprehensively equipped for extended cruising and includes a MIELE four-ring ceramic hob with exhaust fan, a FRIGOBOAT fridge and freezer, a MIELE oven, a MIELE microwave, and a sink, providing professional functionality for life at sea. The crew area is thoughtfully separated to preserve owner privacy, providing two crew cabins with four berths, a head with a separated shower box, and a washing machine with drying function for practical long-range operation. Out on deck, the main deck's swimming platform boasts adjustable high-low lifting capacity for seamless water access, complemented by a cockpit dining area for six to eight people, a foredeck sunbed with lounge seating, and an outdoor fridge for easy refreshments. The flybridge elevates open-air living with a dining area for six to eight people and an outdoor bar cabinet featuring a KENYON BBQ grill, sink, VITRIFRIGO ice-maker, and WAECO fridge, while an openable roof invites the sky in and an aft-deck sunbed plus a stainless steel rack for storing a kayak and water toys expand the yacht's alfresco pleasures. Power and poise come from

two MTU engines of 1600 HP each with 620 hours as of the first quarter of 2025, supported by two KOHLER generators — model 33EFOZDJ at 700 hours and model 28EFOZD at 820 hours as of the first quarter of 2025 — delivering reliable onboard electrical capacity. Comfort and control are further enhanced by a SIDEPOWER fin stabilizer, SIDEPOWER bow and stern thrusters, and air conditioning in the saloon and cabins. The helm is comprehensively outfitted with SIMRAD navigation instruments, including plotter, autopilot, a VHF station and depth sensor, complemented by a gyro compass for precise heading integrity. Disclaimer: The Company offers the details of this vessel in good faith but cannot guarantee or warrant the accuracy of this information nor warrant the condition of the vessel. A buyer should instruct his agents, or his surveyors, to investigate such details as the buyer desires validated. This vessel is offered subject to prior sale, price change, or withdrawal without notice.

# CONTACTS

---

Shestakov Yacht Sales is a brokerage company specializing in the sale and service of yachts worldwide. The company offers services for buying and selling both new and used motor yachts, sailing vessels, and luxury superyachts. They also provide yacht registration, insurance, technical maintenance, crew selection, and charter organization services across the U.S., Canada, Latin America, the Caribbean, and the Bahamas.

The founder and lead broker of the company is Andrey Shestakov, a licensed and certified expert with extensive experience in marine engineering and shipbuilding.

The company has an extensive network of partnerships with major yacht manufacturers worldwide and provides services in multiple languages, including Russian, Ukrainian, Spanish, and English. The office is in Dania Beach, Florida, USA.

For more information and to view available yachts, you can visit the company's official website: <https://shestakovyachtsales.com>

## Contact details

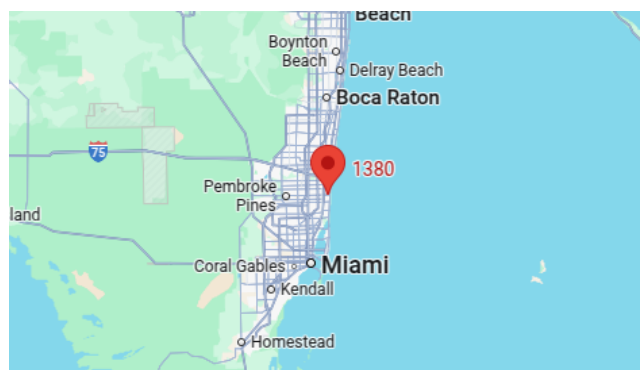
---

**Phone:** +1(954)274-4435

**Email:** [andrey@shestakovyachtsales.com](mailto:andrey@shestakovyachtsales.com)

## Address

---



1380 Weeping Willow Way, Hollywood,  
Florida 33019