

## LONG ISLAND - JFA



**Builder:** [JFA](#)

**LOA:** 86' 0" (26.21 m)

**Year Built:** 2028

**Beam:** 37' 0" (11.35 m)

**Model:** Long Island 86

**Max Draft:** 17' 3" (5.25 m)

**Price:** \$12,336,608.99 USD Subject to change.

**Cruising Speed:** 12 Knots (13.81 MPH)

[See full listing on our website](#)

**Location:** Concarneau, France

**Max Speed:** 15 Knots (17.26 MPH)

---

# TABLE OF CONTENTS

---

**OVERVIEW ..... 3**

**SPECIFICATIONS ..... 4**

    Basic Information ..... 4

    Dimensions ..... 4

    Speed, Capacities and Weight ..... 4

    Accommodations ..... 5

    Hull and Deck Information ..... 5

    Engine Information ..... 5

**GALLERY ..... 6**

**DETAILED DESCRIPTION ..... 8**

**CONTACTS ..... 11**

## OVERVIEW

---

The Long Island 86 Power is a luxury cruising power catamaran conceived by Marc Lombard Design Group and crafted by JFA Yachts. Its aluminum multihull structure paired with a composite deck delivers rigidity, lighter displacement, and resilience.

The layout favors generous living zones and sunlit interiors. The flybridge configuration adds a helm station, protected bar, and lounge seating. An enclosed wheelhouse arrangement is offered too. Forward, the foredeck houses a Jacuzzi and seating nook, while the aft platform stows a large tender and watersports toys aboard.

This superyacht sleeps 8 guests in 4 cabins, with quarters for up to 4 professional crew members. Interior styling, developed with Frank Darnet Design, is fully bespoke and tailored to owner preference.

Purpose-built for long-range passagemaking, the Long Island 86 Power blends economical performance with well-considered living volume and an unwavering emphasis on seagoing comfort.

# SPECIFICATIONS

---

## Basic Information

---

**Model Year:**  
2028

**Country:**  
France

**Year Built:**  
2028

## Dimensions

---

**LOA:**  
86' 0" (26.21 m)

**Max Draft:**  
17' 3" (5.25 m)

**Beam:**  
37' 0" (11.35 m)

## Speed, Capacities and Weight

---

**Cruise Speed:**  
12 Knots (13.81 MPH)

**Water Capacity:**  
422.68 Gallons

**Max Speed:**  
15 Knots (17.26 MPH)

**Fuel Capacity:**  
2641.72 Gallons

## Accommodations

---

**Total Heads:**

4

**Crew Berths:**

3

**Crew Cabin:**

2

## Hull and Deck Information

---

**Hull Material:**

Aluminum Yachts

**Hull Designer:**

N/A

**Deck Material:**

Aluminum

**Interior Designer:**

Darnet Design

**Hull Configuration:**

N/A

## Engine Information

---

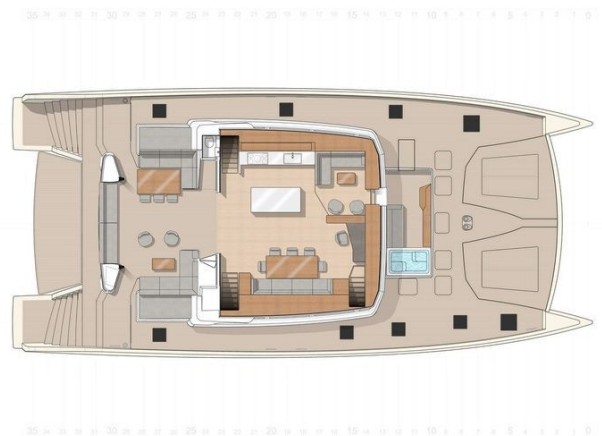
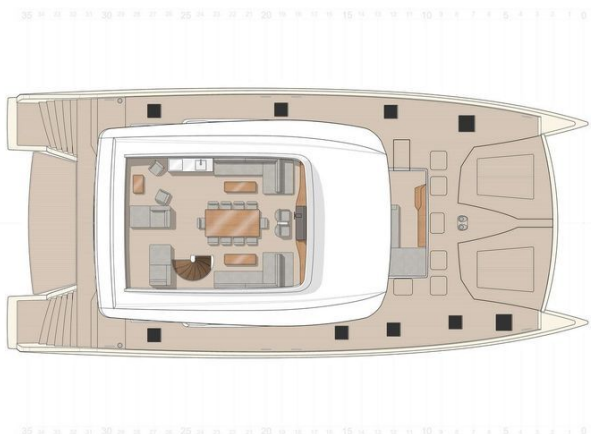
**Engines:**

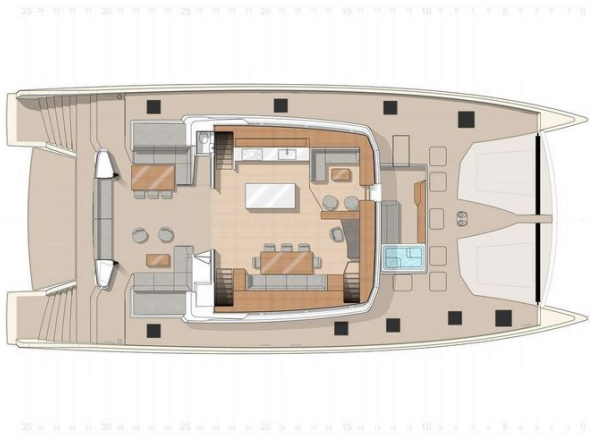
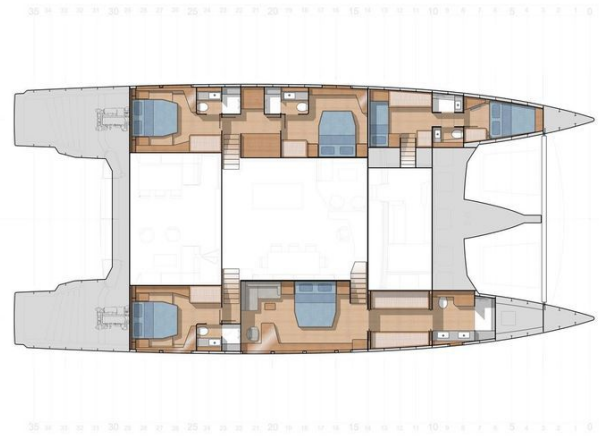
2

**Manufacturer:**

Cummings

# GALLERY





---

# DETAILED DESCRIPTION

---

## Disclaimer

---

We present the particulars of this vessel in good faith; however, we do not guarantee or warrant the accuracy of the information provided, nor do we warrant the vessel's condition. Prospective buyers should instruct their agents or surveyors to investigate and validate any details they consider essential. This vessel is offered subject to prior sale, price change, or withdrawal without notice.

## About

---

The Long Island 86 Power is a large cruising power catamaran designed by Marc Lombard Design Group and built by JFA Yachts, featuring an aluminum hull with a composite deck to combine strength, reduced weight, and lasting durability. Its layout offers expansive living areas and bright interiors, with the flybridge version integrating a navigation station, a sheltered bar, and inviting lounge seating, while an enclosed wheelhouse layout is also available. On deck, the foredeck presents a Jacuzzi with a comfortable seating area, and the aft platform carries a large tender with ample space for water toys.

Accommodating eight guests across four cabins and providing space for up to four crew members, the interior is developed in partnership with Frank Darnet Design and can be fully customized. Built for long-range cruising, the Long Island 86 Power harmonizes efficient performance with practical living space and an unwavering focus on comfort at sea.

## Technical details

---

With an LOA of 26.25 m/86.1 ft and an LWL of 25.47 m/83.5 ft, this yacht

presents commanding proportions, complemented by a beam of 11.35 m/37.2 ft, a draught of 1.60 m/5.2 ft, and a light displacement of 54 t. Built with aluminum hulls and a composite deck and superstructure, she is finished in an Awlgrip scheme with Flag Blue hulls and a Snow White superstructure, and the yacht will not be classed. Performance is confident and efficient, cruising at 12 knots with a top speed of 15 knots. Power comes from two Cummins QSB 8.3M – 600 hp, driving through five-bladed 720 mm propellers, while onboard power is assured by two Onan 19 kW 50 Hz generators. Fuel capacity is two 5,000 liters/1,321 gallons, and water capacity is two 800 liters/211 gallons. Inside, a modern interior joinery style in oak and walnut sets a refined tone, with interior styling by Darnet Design and naval architecture by Marc Lombard Yacht Design Group. Accommodation is thoughtfully arranged for 8 guests in 4 staterooms with 4 heads, supported by a professional crew of 3 housed in 2 crew cabins with 1 crew head.

## Additional details

---

Precision handling is assured by one electric retractable bow thruster and a hydraulic steering system by Lecomble & Schmidt. For autonomy offshore, freshwater production is delivered by one SeaRecovery Aquatic 1,800 with a capacity of 285 L/H and one SeaRecovery 24 volt UW600 producing 100 L/H. Safety is paramount with a dedicated saltwater fire-fighting system, portable fire extinguishers, and a Novec fire suppression system protecting the engine room.

## About JFA Yachts shipyard

---

Founded in 1993 by Frédéric Jaouen and Frédéric Breuilly in Concarneau, France, on Brittany's southern coast—a region with centuries of maritime heritage—JFA Yachts embodies a legacy of passion, innovation, and

craftsmanship. Today they are custom boat builders with expertise in large refit projects as well as new construction, capable of delivering custom yachts up to sixty meters across both sail and power. With a proven track record of building yachts of the highest quality in GRP, carbon, aluminium, or steel, their recent launches have withstood the rigors of global navigation, including voyages to the polar regions.

JFA Yachts' first new construction project, delivered in 1993, was the 75-foot aluminum sailboat "Kermor," reflecting the founders' roots in performance sailing yacht construction and echoing their first love. In 2001, JFA expanded into custom motor yachts with the launch of "Axantha," a 122-foot explorer yacht, followed by the highly acclaimed 42-meter "Bystander" in 2003—a turning point that demonstrated JFA's ability to build complex yachts over 500 GT under Lloyds classification and MCA regulations. "Bystander" later won Best Motor Yacht of the Year (32–43m) at the 2006 International Superyacht Society Awards.

The shipyard continued to push boundaries with the 2012 delivery of "Mousetrap," a 33-meter carbon-fiber sailing catamaran that inspired the Long Island Catamarans range. Since then, yachts like "WindQuest" (2014) and "NDS Evolution" (2018) have embodied JFA's spirit of adventure and technical innovation, with the latter reaching Antarctica. Having now completed 30 new builds and 40 refit projects, their expertise and unwavering passion for the sea, combined with a family environment, ensure that your construction project becomes a uniquely collaborative experience, best reflected in the founder's motto: "We don't build a yacht for a client, but with a client."

# CONTACTS

---

Shestakov Yacht Sales is a brokerage company specializing in the sale and service of yachts worldwide. The company offers services for buying and selling both new and used motor yachts, sailing vessels, and luxury superyachts. They also provide yacht registration, insurance, technical maintenance, crew selection, and charter organization services across the U.S., Canada, Latin America, the Caribbean, and the Bahamas.

The founder and lead broker of the company is Andrey Shestakov, a licensed and certified expert with extensive experience in marine engineering and shipbuilding.

The company has an extensive network of partnerships with major yacht manufacturers worldwide and provides services in multiple languages, including Russian, Ukrainian, Spanish, and English. The office is in Dania Beach, Florida, USA.

For more information and to view available yachts, you can visit the company's official website: <https://shestakovyachtsales.com>

## Contact details

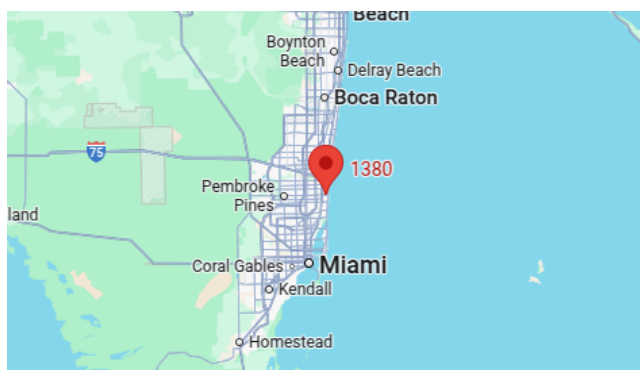
---

**Phone:** +1(954)274-4435

**Email:** [andrey@shestakovyachtsales.com](mailto:andrey@shestakovyachtsales.com)

## Address

---



1380 Weeping Willow Way, Hollywood,  
Florida 33019