

SU - SUNSEEKER



Builder: [Sunseeker](#)

LOA: 86' 0" (26.30 m)

Year Built: 2022

Beam: 21' 0" (6.48 m)

Model: 88 Yacht

Max Draft: 6' 5" (1.96 m)

Price: \$6,680,000 USD Subject to change.

Cruising Speed: 21 Knots (24.17 MPH)

[See full listing on our website](#)

Location: Amphoe Thalang, Thailand

Max Speed: 28 Knots (32.22 MPH)

TABLE OF CONTENTS

| | |
|------------------------------------|-----------|
| OVERVIEW | 3 |
| SPECIFICATIONS | 4 |
| Basic Information | 4 |
| Dimensions | 4 |
| Speed, Capacities and Weight | 4 |
| Accommodations | 4 |
| Hull and Deck Information | 5 |
| Engine Information | 5 |
| GALLERY | 6 |
| DETAILED DESCRIPTION | 15 |
| CONTACTS | 27 |

OVERVIEW

Delivered in 2023, single-owner, MTU-powered, with low hours and the innovative X-Tend Beach Club, this highly optioned example is a standout. Launched in early 2023, this Sunseeker 88 flybridge motor yacht is a refined showcase of craftsmanship and intelligent design. Cared for by one discerning owner from new, she blends poise, comfort, and cutting-edge onboard technology to create an effortlessly luxurious cruising environment. Specified to the highest level with premium factory upgrades—balancing practicality and indulgence—she offers an exceptional setting for family and guests, befitting an 88-foot superyacht. Having delivered her new to the present and sole owner, I can personally vouch for her outstanding specification and condition. Light private use and meticulous professional care since handover have kept her immaculate and ready to go. A compelling turnkey high-performance planing yacht with serene interiors, elegant finishes, and thoughtful enhancements throughout.

SPECIFICATIONS

Basic Information

Model Year:
2023

Country:
Thailand

Year Built:
2022

Dimensions

LOA:
86' 0" (26.30 m)

Max Draft:
6' 5" (1.96 m)

Beam:
21' 0" (6.48 m)

Speed, Capacities and Weight

Cruise Speed:
21 Knots (24.17 MPH)

Water Capacity:
369.84 Gallons

Max Speed:
28 Knots (32.22 MPH)

Fuel Capacity:
2905.89 Gallons

Accommodations

Total Heads:
5

Crew Cabin:
2

Hull and Deck Information

Hull Material:

Fiberglass and Plastic Yachts

Hull Designer:

N/A

Deck Material:

Fiberglass

Interior Designer:

N/A

Hull Configuration:

Deep Vee

Engine Information

Engines:

2

Engine Type:

Inboard

Manufacturer:

MTU

Fuel Type:

Diesel

GALLERY



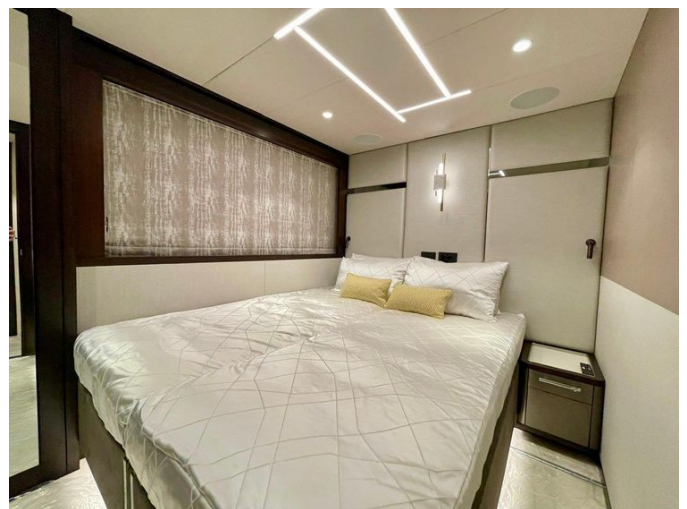
















DETAILED DESCRIPTION

Introduction

Delivered in 2023 and introduced to the water early that year, this Sunseeker 88 is a showcase of refined craftsmanship, thoughtful design, and highly specified factory options. With one careful owner since new and low hours, she blends sophistication, comfort, and cutting-edge technology to deliver an exceptional experience for owners and guests alike. The four-cabin layout provides luxurious accommodation for the owner and all guests, complemented by additional fully fitted crew cabins, while premium amenities such as a Miele fully equipped galley, full teak decking on the flybridge and cockpit, a special hardtop design, and the X-Tend Beach Club elevate life on board.

Her advanced SIMRAD NSO EVO3S navigation system with large high-resolution touchscreens is paired with the CM8 Yacht Monitoring System and an aft cockpit docking station, ensuring effortless control and awareness at sea and in port. Powerful performance comes from two MTU 12V 2000 M96 engines with low engine hours (approximately 300 hours), supported by CMC fin stabilisers for stability underway and at anchor. Electrical resilience is assured by two generators, 28kW 50Hz and 35kW 50Hz, while a fuel polishing system eliminates build-up in the tanks. Practical enhancements including an Opacmare davit on the flybridge complement her cruising capability and tender management.

Sold new to its current and only owner, this yacht has been lightly used and professionally maintained since delivery. The result is a turnkey, high-performance yacht with beautiful interiors and thoughtful upgrades throughout—highly specified, powered by MTU engines, and distinguished by low hours and the signature allure of the X-Tend Beach Club.

Technical & mechanical equipment

At the heart of the yacht, twin MTU 12V 2000 M96X (2 x 2000PS) shaft engines deliver commanding performance, orchestrated by MTU BlueVision Basic New Generation ships automation systems. Precision control is assured through MTU RCS DUO-6k engine propulsion twin control levers with dual-station capability, complemented by MTU PAN 9 stop-start operating panels per engine at both stations, MTU engine data displays on Simrad screens on both consoles, and an MTU LOP-13 local operating panel with display in the engine room per engine. Maneuvering is effortless with a hydraulic Sleipner bow thruster system delivering 500kg thrust in a 386mm ID GRP tunnel, controlled via a Sleipner proportional joystick with dual station control, while practical access is ensured by an engine room door from the crew cabin, a heavy duty watertight design.

For assured comfort underway and at anchor, a CMC fins stabilization system provides an effective means of stability when underway and significant roll reduction while at rest or anchor.

For precise close-quarters handling, the aft cockpit docking control station includes MTU RCS DUO-6k engine propulsion twin control levers, an MTU PAN stop-start operating panel per engine, a Sleipner Side-Power proportional bow and stern thruster (hydraulic Sleipner bow thruster system, 500kg thrust in a 386mm ID GRP tunnel, controlled using a Sleipner proportional joystick with dual station control), a thruster control system, a horn button, trailing pumps (used to supply oil pressure for gearbox lubrication during wind-milling situations - this may include running on 1 engine or when under tow), and a storage cage located in the engine room.

Onboard power generation is ensured by one Kohler 28kW 50hZ generator and one Kohler 35kW 50hZ generator.

Inferior fit-out

The layout is crafted for versatility and poise, presenting a master stateroom with a starboard-side vanity desk as standard, or an alternative arrangement on the starboard side that introduces an inviting L-shaped sofa and coffee table partnered with a reduced-size vanity desk. A main deck day head replaces the standard cloakroom for added convenience. The interior wood finish blends smoked eucalyptus figured high sheen satin with silver oak low build open grain satin, a pairing that enriches the ambiance with depth and texture. Upgraded hard surfaces specified in lieu of the standard Minerva elevate the en-suite vanity top, flooring and shower bulkheads, and the same premium upgrade is extended to the interior bar tops. Underfoot, wood flooring flows through the galley and helm and continues into the dining area, enhancing continuity and style. Security and privacy are discreetly addressed with safes concealed within the cabinetry of both the master stateroom and the forward VIP cabin, complemented by key locks on the master stateroom door and the forward VIP cabin door.

Entertaining is effortlessly refined with Royal Daulton Fusion White crockery consisting of 10 x dinner plates, 10 x side plates, 10 soup bowls with plates, 10 x cups and saucers, 1 x teapot, 1 x creamer jug, 1 x covered sugar bowl and 1 x salt and pepper pot; Robert Walsh cutlery consisting of 10 x dinner knives, 10 x dinner forks, 10 x dessert spoons, 10 x soup spoons, 10 x teaspoons and 4 x serving spoons; and Darlington Crystal glassware consisting of 10 x double dimple old fashioned tumbler TU10/5/P and 10 x elegance champagne flute SP410. The crew are equally well served with Royal Daulton Fusion White crew crockery consisting of 4 x dinner plates, 4 x side plates, 4 x soup bowls and 4 x mugs, and Robert Walsh Facet Bright crew cutlery consisting of 4 x dinner knives, 4 x dinner forks, 4 x dessert spoons and 4 x teaspoons.

Guest accommodations are thoughtfully arranged, with the starboard guest cabin configured with two single berths and the port guest cabin featuring

slidable single berths that combine to create a double berth.

Exterior fit-out

Crafted to elevate life on deck, the main deck glazing includes pantograph style access doors from both the galley and the helm to the side decks, complemented by a main deck saloon sliding door to starboard for effortless indoor outdoor flow. Thoughtful exterior engineering enhances every moment at sea, with a hydraulic lifting platform delivering a maximum lift capacity of 650 kg and accommodating a tender up to 550 kg, a five metre Besenzoni hydraulic telescopic passerella for poised boarding, and an upgraded flybridge hardtop that integrates a tilting vane system in lieu of the soft retractable central canopy.

The anchoring suite is engineered for confidence and control, featuring two Lewmar C4 24V DC vertical capstans fitted port and starboard; polished stainless steel mooring bollards on the foredeck and aft main deck with fairleads; two sets of polished stainless steel spring cleats fitted port and starboard on the bulwark; and a pair of retractable cleats for the tender on the aft platform. Twin Lewmar V8 24V DC windlasses with vertical gypsy and capstan drum, a manual handwheel brake, and a devil's claw chain stopper work in concert with one 80 kg Lewmar galvanized claw anchor, one 50 kg galvanized claw anchor, and one 100 metres and one 60 metres length of 12 mm high tensile galvanized short link chain with anchor swivel. Freshwater pressure washing of the chain with a directed outlet keeps the ground tackle clean and ready for instant deployment.

Refined exterior detailing includes a carbon fibre companionway hatch at the top of the fly stairs and a carbon fibre and polished stainless steel ensign staff suitable for a 2.5 yard ensign, while safety at sea is enhanced by two ten man canister liferafts stowed securely in a stainless steel frame on deck.

On the aft deck, convivial entertaining is centred around an elegant dining

table with eight chairs and generous seating cushions, paired with bespoke Coco Wolf loose furniture tailored for the X TEND™. The X TEND™ Sun lounge Transforma ingeniously deploys as the platform locker door folds out electrically to reveal a large sun lounge, and can also fold up to form an aft deck sun lounge, extending the cockpit space as the stern glazed safety rails bi-fold neatly to the sides. Practical luxuries include a 50 litre cockpit refrigerator concealed behind a vented GRP door in the aft cockpit and a remote controlled twin beam halogen searchlight for precise nighttime illumination.

Forward, the foredeck invites relaxation with cushions and an optional folding sunbed, while up top the flybridge bar is finished to impress with spray painted wet bar mouldings and doors, a raised shelf bar top with LED lighting, a 108 litre refrigerator with integral freezer, two stainless steel drawer refrigerators with water cooled compressors, and a Marine Electric stainless steel BBQ grill for gourmet moments at anchor.

Protection and privacy are assured by a comprehensive suite of campers and covers, including a flybridge instrument cover, a windscreen cover, dedicated foredeck seating, sunpad and table covers, tailored flybridge seating, sunpad, table and helm seat covers, aft cockpit seating covers, and an electrically operated aft cockpit privacy screen. For flexible shade, a parasol with an offset post features two sockets on either side of the foredeck.

Underfoot, finely laid teak defines the yacht's premium finish across the aft cockpit, side decks, forepeak, aft lower deck platform and flybridge. The look is completed by a teak table with V groove fixed top on stainless steel legs on the foredeck and a matching teak table with V groove folding top on stainless steel legs on the flybridge, uniting form and function in timeless maritime style.

Other systems

Engineered for absolute comfort in any climate, the yacht's air conditioning is a marine air chilled water system built to tropical specification, delivering 222,000 BTU with WhisperCool DC fans for notably quieter operation. The freshwater system is equally accomplished, featuring an integral GRP tank of 1,400 litres that is WRAS approved for potable water, with a pressure system driven by an AC self priming pump and serviced by a neatly mounted inlet/discharge manifold. A freshwater marina connection regulator ensures seamless shoreside supply, while dedicated purifiers serve the galley and all independent icemakers for impeccable taste and clarity. Hot water is abundant thanks to a primary calorifier comprising a 200 litre stainless steel cased tank with two 2 kW immersion heaters, a 60 litre expansion tank, and a hot water circuit ring main across the lower and main decks supported by a permanently running AC circulation pump; a second Surejust horizontal 200 litre stainless steel cased calorifier with two 2 kW immersion heaters adds generous redundancy. Practical touches include a handheld swimming shower and a freshwater deck wash system with hose reel and outlets on the aft deck, flybridge deck, and foredeck. For unwavering pressure and reliability, standby 24 VDC self priming, pressure controlled freshwater pumps are fitted, and an Octo Marine Compact Water Softener—required for the domestic freshwater system—is installed in line from the vessel's freshwater shore supply. Grey water from showers and basins drains directly to sump boxes and into an upgraded 850 litre grey water tank, while galley services discharge directly overboard or to the tank; the sump boxes feed the tank, which in turn discharges via a 24 VDC pump either directly overboard or through a shoreside suction facility via a deck fitting when available. Power management is enhanced by a second shore power connection via one 63 Amp, 250 V rated, plugged flexible three core cable at 20 m.

Onboard connectivity is robust and discreetly integrated, with a router

providing internet access via Wi-Fi or cellular data and the flexibility to link to available Wi-Fi networks. Coverage is optimized by four wireless access points throughout the boat, the system can be fitted with two SIM cards for internet access when within range of 3G/4G data signals, and performance is amplified by a combined cellular and Wi-Fi signal booster antenna.

Illumination is both architectural and atmospheric, with stainless steel LED courtesy lighting guiding the side decks from the aft cockpit to the bow and enriching the bow seating group. Steps to the flybridge are elegantly lit, complemented by LED strip lighting on the platform steps, while stainless steel LED downlighting softens the cockpit overhead. Further stainless steel LED downlighting highlights the hardtop or radar hoop, with LED low level strip lighting tucked beneath all seating to create a subtle evening glow. In the accommodations, bedside wall lamps adorn the forward VIP cabin and the master stateroom, and dimmable Vimar switches deliver nuanced control of all overhead lighting. After dark, eight dual white/blue underwater lights transform the waterline into a captivating halo.

Galley

Impeccably appointed, the galley showcases custom integrated refrigeration with a stainless steel interior, providing 250 litres of fridge capacity and 120 litres of freezer capacity, complemented by additional under counter custom galley integrated drawer refrigeration. Culinary equipment includes a Miele electric oven, a Miele microwave oven, and a Miele ceramic hob 4-ring 1, all ventilated by an integrated extractor fan, while cleanup and entertaining are elevated by a full-size dishwasher and a Miele wine cooler for 34 bottles.

Crew lounge

Thoughtfully appointed, the crew lounge features a microwave oven and an

80-litre refrigerator with integral freezer, complemented by a separate Miele washing machine and tumble dryer to streamline daily routines. Entertainment and connectivity are centred around a Fusion Apollo head unit offering AM/FM radio, USB input, Bluetooth, and Apple AirPlay compatibility with users' devices, paired with two Fusion ceiling speakers in the crew mess and in each of the cabins, while a 24-inch HD TV in the crew mess completes the space.

Navigation equipment

The Simrad Premium Package defines the helm with absolute clarity and control. At the main console, two Simrad NSO evo3S 24" multifunctional touchscreens are paired with an OP50 remote keypad controller, complemented by an additional 10" touchscreen dedicated to Cm8 Sunseeker monitoring. Long-range awareness is assured by the Simrad Halo 6 Pulse Compression Radar with a 6 ft 72 nm array and velocity track, while precise positioning comes via the Simrad GS25 GPS antenna. Command is effortless with the Simrad Autopilot AP44 system, and communication is crisp through the Simrad HS100 VHF with DSC and a 2.4M whip VHF antenna. Underwater intelligence is delivered by a Simrad depth speed/depth transducer with water temp B744V and Sonarhub module, alongside Simrad structure scan 3D side scan transducers and the Sonarhub 3D module. Traffic awareness is enhanced by the Simrad Automatic Identification System NAIS500 Class B AIS Transponder system, complete with a dedicated 2.4M whip antenna and GPS receiver, while wind data flows from the Simrad 110WX ultrasonic wind sensor. Course-keeping is anchored by the Richie Helmsman HF-7438 flush mount magnetic compass.

On the flybridge, the console mirrors and amplifies this sophistication with two Simrad NSO evo3S 16" touchscreen multifunctional displays with OP50 keypad controller and an additional 7" touchscreen for Cm8 Sunseeker monitoring, supported by the Simrad Autopilot AP44 system and a second-station Simrad

HS100 VHF with DSC. It is further enhanced by two Simrad NSO evo3S 26" touchscreen multifunctional displays with OP50 keypad controller, a further 7" monitoring touchscreen, another Simrad Autopilot AP44 system, and an additional second-station Simrad HS100 VHF with DSC.

Professional compass swinging and adjustment have been completed, and a correction card is supplied.

In the crew cabin, a Simrad NSS12 Evo3S 12" chart-plotter multi-function touchscreen colour display is paired with a third-station Simrad HS100 VHF for complete, shipwide situational awareness.

Platinum package upgrade - factory fit options

The Platinum package upgrade elevates every voyage with a fin stabilisation system that delivers unwavering poise both underway and at rest, and a flybridge hardtop crowned with a retractable centre canopy and an aft extending sun canopy. Tropical specification air conditioning with quieter running fans ensures cool serenity throughout, while dependable onboard power comes from one 28 kW 50 Hz Kohler generator and one 35 kW 50 Hz Kohler generator, supported by a second shore power connection. Manoeuvring is effortless with a hydraulic stern thruster, and fuel quality is safeguarded by a fuel polishing system designed to eliminate algae build up and water in the tank with 99.8% water and partial removal. Onboard ambience and convenience are refined by dimmable switches on all overhead lighting, two stainless steel drawer refrigerators with water cooled compressors in the flybridge wet bar, and additional under counter galley refrigeration. The flybridge is finished in teak decking, while the aft platform features a pair of retractable cleats for the tender and additional stern spring cleats for secure mooring. A carbon fibre companionway hatch at the top of the fly stairs adds lightweight strength and sophistication, and spring mattresses for all cabin beds ensure deeply restful nights at sea.

Entertainment equipment - upgraded performance AV package

This upgraded performance AV package transforms every space on board into a seamless, high-fidelity experience. In the saloon, a Samsung 55-inch The Frame UHD 4K QLED Smart TV with Apple TV app and Airplay 2 included pairs with an Ultra HD Blu-ray player, while Sonance upgraded front and rear speakers powered by Sonos Amps and a Sonos Subwoofer deliver rich, cinematic sound; the adjacent dining area benefits from two additional Sonance speakers driven by a Sonos Amp. The galley features a Samsung 43-inch UHD 4K Smart TV with Apple TV app and Airplay 2 included, complemented by Sonance speakers with a Sonos Amp. In the master stateroom, a Samsung 55-inch The Frame UHD 4K QLED Smart TV with Apple TV app and Airplay 2 included joins an Ultra HD Blu-ray player, with Sonance upgraded front and rear speakers energized by Sonos Amps. The forward VIP cabin offers a Samsung 55-inch UHD 4K Smart TV with Apple TV app and Airplay 2 included and Sonance speakers with a Sonos Amp, while the port mid cabin mirrors this with a Samsung 43-inch UHD 4K Smart TV with Apple TV app and Airplay 2 included and Sonance speakers with a Sonos Amp. The starboard mid cabin is equipped with a Samsung 32-inch HD Smart TV with Apple TV app and Sonance speakers powered by a Sonos Amp. Outdoor zones are equally immersive, with the aft cockpit energized by four eight-inch Sonance Extreme speakers powered by a Sonos Amp, the flybridge deck featuring four eight-inch Sonance and two six-inch Extreme speakers driven by a Sonos Amp, and the foredeck outfitted with two 6.5-inch Sonance Extreme speakers, also powered by a Sonos Amp.

Key features in detail

At the helm, exceptional navigation equipment takes command, led by the

advanced SIMRAD NSO EVO3S navigation system, specified with large high-resolution touchscreens that deliver precise, intuitive control and effortless passage-making in all conditions. Sunseeker's signature CM8 Monitoring System integrates comprehensive real-time oversight of every major onboard function—from power management and fuel levels to stabilisers and navigation—ensuring seamless operation and complete peace of mind whether underway or at anchor. For close-quarters confidence, an aft cockpit docking station places the controls exactly where visibility is optimal, enabling precise maneuvering with ease.

Performance and engineering are equally compelling, with twin MTU 12V 2000 M96 engines showing low engine hours at approximately 300 hours. CMC fin stabilisers enrich comfort with impressive roll reduction both underway and at anchor, smoothing the ride even when seas turn lively. Electrical autonomy comes from two generators, 28kW 50Hz and 35kW 50Hz, while a dedicated fuel polishing system safeguards the integrity of the fuel supply by preventing tank build-up, promoting smoother running and long-term engine health.

On deck, the X-Tend beach club transforms the fold-down transom into a luxurious waterside lounge for effortless relaxation and play, or folds upward to create additional seating within the main deck cockpit. A welcoming bow seating area invites quiet moments with uninterrupted views, while the spacious flybridge is purpose-built for entertaining; its dining area seats twelve with ease and is complemented by a fully equipped bar and barbecue. Full teak decking underfoot elevates the yacht's presence and practicality, and Sunseeker's special hardtop design introduces a retractable center canopy for starlit evenings along with an aft-extending sun canopy for generous shade. An Opacmare davit on the flybridge enables the yacht to carry two toys—a jet ski on the flybridge and a tender on the aft platform—so adventures are always within reach.

Inside, a four-cabin layout grants luxurious accommodation for the owner and

all guests, with additional fully fitted crew cabins ensuring discreet, professional service. The interior design blends dark and light carpentry with elegant soft furnishings and modern ceiling light features to create a stylish, luxurious ambiance. An elegant dining area sets the stage for memorable meals, and the fully equipped galley features high-end appliances including a wine fridge, dishwasher, baking oven, and extra fridge drawers beneath the counter. A premium flooring specification places wooden floors on the main deck and lower deck lobby for easy cleaning, with plush carpeting in all cabins for added comfort.

Entertaining is effortless throughout, with an expansive cockpit and flybridge conceived for socializing and relaxation. The cockpit's generous seating and seamless connection to the saloon make it ideal for hosting or for alfresco dining, while the flybridge's bar, barbecue, and sun canopy invite long afternoons and glowing sunset gatherings. Skyward views come courtesy of the flybridge hardtop with its retractable center canopy, opening the deck to the heavens in complete comfort. At the water's edge, the X-Tend beach club and generous swim platform form a private oasis with seamless access to the sea. An airy saloon framed by full-height glass, layered with rich materials and mood lighting, lends a refined, welcoming atmosphere, and the yacht's thoughtful flow ensures effortless transitions from lively days to tranquil evenings.

This Sunseeker 88 yacht is a rare opportunity to own a meticulously maintained vessel that combines luxurious living spaces with top-tier performance. Whether you seek thrilling adventures or peaceful retreats on the water, this yacht is perfectly suited to fulfill your desires.

CONTACTS

Shestakov Yacht Sales is a brokerage company specializing in the sale and service of yachts worldwide. The company offers services for buying and selling both new and used motor yachts, sailing vessels, and luxury superyachts. They also provide yacht registration, insurance, technical maintenance, crew selection, and charter organization services across the U.S., Canada, Latin America, the Caribbean, and the Bahamas.

The founder and lead broker of the company is Andrey Shestakov, a licensed and certified expert with extensive experience in marine engineering and shipbuilding.

The company has an extensive network of partnerships with major yacht manufacturers worldwide and provides services in multiple languages, including Russian, Ukrainian, Spanish, and English. The office is in Dania Beach, Florida, USA.

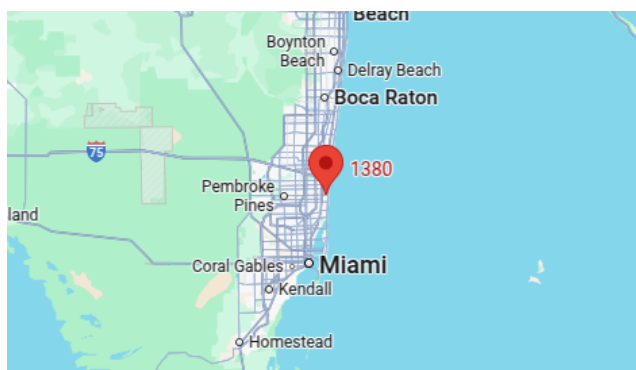
For more information and to view available yachts, you can visit the company's official website: <https://shestakovyachtsales.com>

Contact details

Phone: +1(954)274-4435

Email: andrey@shestakovyachtsales.com

Address



1380 Weeping Willow Way, Hollywood,
Florida 33019