

## SU - SUNSEEKER



**Builder:** [Sunseeker](#)

**LOA:** 86' 0" (26.30 m)

**Year Built:** 2022

**Beam:** 21' 0" (6.48 m)

**Model:** N/A

**Max Draft:** 6' 5" (1.96 m)

**Price:** \$6,680,000 USD Subject to change.

**Cruising Speed:** 21 Knots (24.17 MPH)

[See full listing on our website](#)

**Location:** Amphoe Thalang, Thailand

**Max Speed:** 28 Knots (32.22 MPH)

---

# TABLE OF CONTENTS

---

<b>OVERVIEW .....</b>	<b>3</b>
<b>SPECIFICATIONS .....</b>	<b>4</b>
Basic Information .....	4
Dimensions .....	4
Speed, Capacities and Weight .....	4
Accommodations .....	4
Hull and Deck Information .....	5
Engine Information .....	5
<b>GALLERY .....</b>	<b>6</b>
<b>DETAILED DESCRIPTION .....</b>	<b>15</b>
<b>CONTACTS .....</b>	<b>25</b>

## OVERVIEW

---

Launched in 2023, this Sunseeker 88 flybridge motor yacht embodies true superyacht lineage, marrying superb build standards with intelligent naval architecture. Owned by a single, discerning individual from new and showing notably low engine hours, she offers a synthesis of elegance, comfort and forward-looking technology. Finished to an exceptional specification with premium factory options, she is propelled by powerful MTU engines that provide confident, high-performance planing cruising, while the innovative X-Tend Beach Club converts the afterdeck into a versatile, water-level retreat. Every element, from the refined interiors to the thoughtfully integrated systems, has been arranged to elevate life aboard for owners and guests alike. Having delivered her new to the current owner, I can personally vouch for her outstanding specification and condition. Lightly used and professionally maintained since day one, she represents a genuine turnkey opportunity for those seeking a high-performance planing motor yacht with beautiful finishes and tasteful upgrades throughout. An inspired choice for private cruising or Mediterranean adventures, she sits comfortably in the luxury cruiser and superyacht class, offering the rare combination of style, capability and immediate readiness to go.

# SPECIFICATIONS

---

## Basic Information

---

**Category:**  
Motor yachts

**Year Built:**  
2022

**Model Year:**  
2023

**Country:**  
Thailand

## Dimensions

---

**LOA:**  
86' 0" (26.30 m)

**Max Draft:**  
6' 5" (1.96 m)

**Beam:**  
21' 0" (6.48 m)

## Speed, Capacities and Weight

---

**Cruise Speed:**  
21 Knots (24.17 MPH)

**Water Capacity:**  
369.84 Gallons

**Max Speed:**  
28 Knots (32.22 MPH)

**Fuel Capacity:**  
2905.89 Gallons

## Accommodations

---

**Total Heads:**  
5

**Crew Cabin:**  
2

## Hull and Deck Information

---

**Hull Material:**

Fiberglass and Plastic Yachts

**Hull Designer:**

N/A

**Deck Material:**

Fiberglass

**Interior Designer:**

N/A

**Hull Configuration:**

Deep Vee

## Engine Information

---

**Engines:**

2

**Engine Type:**

Inboard

**Manufacturer:**

MTU

**Fuel Type:**

Diesel

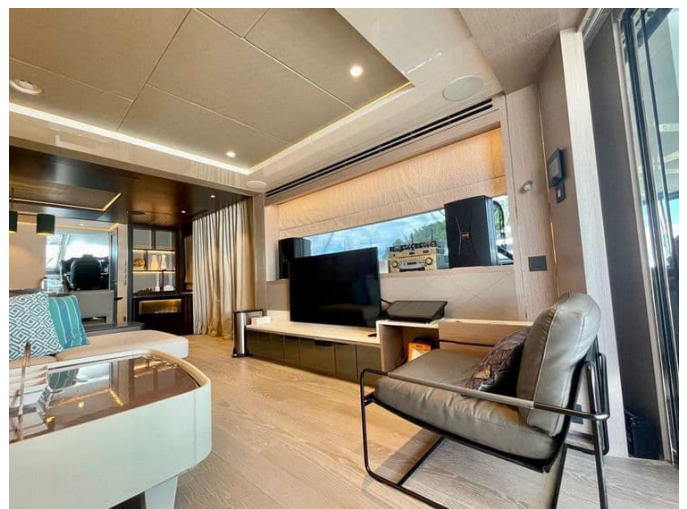
# GALLERY



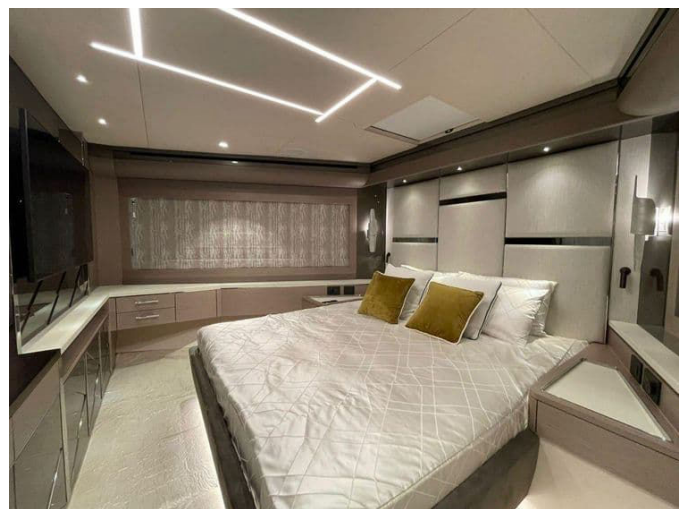
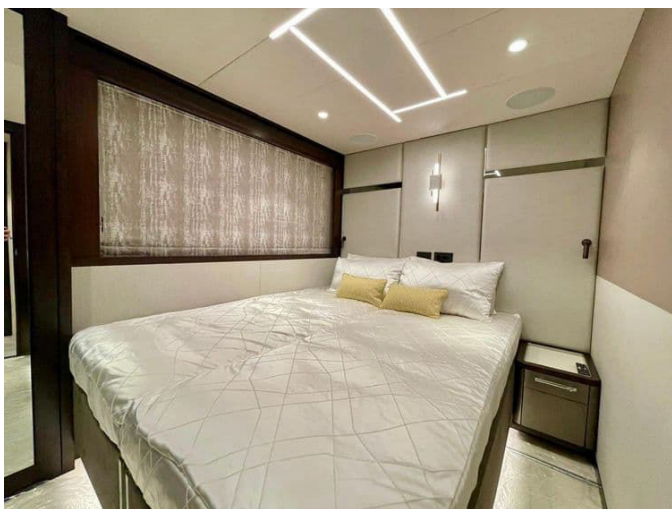


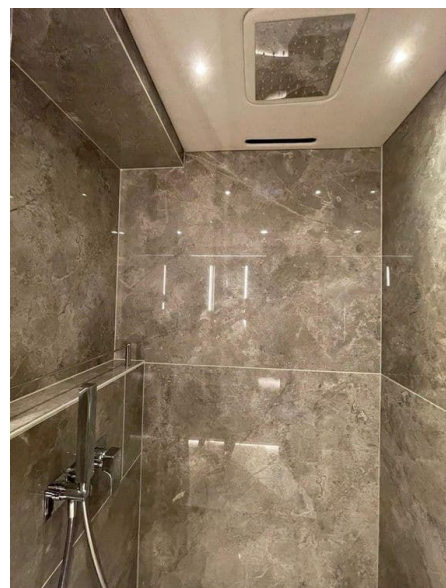


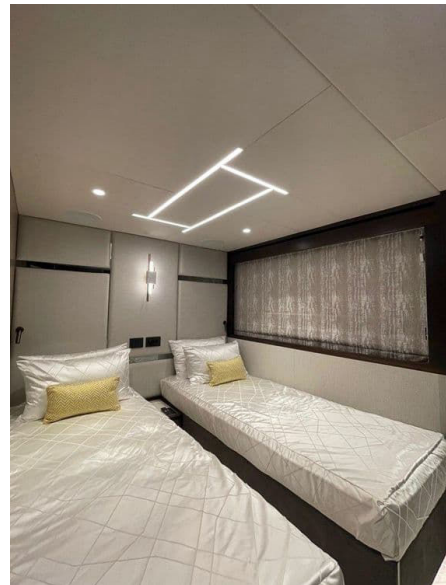












---

# DETAILED DESCRIPTION

---

## Introduction

---

Delivered in 2023, with one careful owner, low hours and a highly specified factory build, this Sunseeker 88 pairs MTU power with the coveted X-Tend Beach Club to deliver a yachting experience that is both exhilarating and effortlessly refined. Launched to the water in early 2023 and curated with every premium, practical and luxurious option, she combines sophisticated design with cutting-edge technology and meticulous maintenance to present in outstanding condition. The four-cabin arrangement pampers owner and guests in equal measure, while fully fitted crew cabins ensure discreet, professional service. At the helm, the advanced SIMRAD NSO EVO3S navigation suite with large high-resolution touchscreens is complemented by Sunseeker's CM8 yacht monitoring system and an aft cockpit docking station for confident close-quarters control. Performance is assured by twin MTU 12V 2000 M96 engines showing approximately 300 hours, aided by CMC fin stabilisers for comfort both underway and at anchor, twin generators at 28 kW 50 Hz and 35 kW 50 Hz for resilient power management, and a fuel polishing system that keeps tanks pristine for long-term engine health. Lifestyle highlights abound: the transformative X-Tend Beach Club, an Opacmare davit on the flybridge for carrying a jet ski aloft while a tender rests on the aft platform, a Miele-equipped galley for culinary ease, full teak decking to the flybridge and cockpit, and Sunseeker's special hardtop design that invites starlit evenings beneath a retractable centre canopy. Sold new to its current and only owner and lightly used since, this turnkey, high-performance yacht stands ready with beautiful interiors and thoughtful upgrades throughout, a discerning choice for those who demand poise, power and polish in equal measure.

## Technical & Mechanical Equipment

---

Propulsion is delivered by twin MTU 12V 2000 M96X engines on shafts (2 x 2000 PS), integrated with MTU BlueVision Basic New Generation ship automation, MTU RCS DUO 6k twin control levers at dual stations, MTU PAN 9 stop/start operating panels for each engine at both stations, MTU engine data presented on Simrad displays at both consoles, and MTU LOP 13 local operating panels with individual engine room displays. Precision manoeuvring is enhanced by a hydraulic Sleipner bow thruster system delivering 500 kg of thrust in a 386 mm ID GRP tunnel, governed via a Sleipner proportional joystick with dual station control, while a heavy duty watertight access door connects the crew cabin to the engine room. Underway and at anchor, comfort is secured by a CMC fin stabilisation system that provides effective damping on passage and significant roll reduction at rest. For close quarters handling, the aft cockpit docking control station mirrors the helm with MTU RCS DUO 6k twin engine levers, MTU PAN stop/start panels per engine, Sleipner Side Power proportional bow and stern thrusters (including the hydraulic Sleipner bow thruster with 500 kg thrust in a 386 mm ID GRP tunnel, all managed by a Sleipner proportional joystick at dual stations), a dedicated thruster control system, horn activation, and trailing pumps that supply gearbox lubrication pressure during wind milling scenarios such as single engine operation or towing; a practical storage cage is also fitted in the engine room. Electrical resilience comes from a matched pair of Kohler generators, one 28 kW 50 Hz and one 35 kW 50 Hz, ensuring abundant, redundant onboard power.

## Inferior fit-out

---

The interior fit out has been specified for both elegance and utility. In the master suite, the standard starboard side vanity desk can be retained or

combined with a starboard L shaped sofa and coffee table paired to a reduced size vanity, while the main deck benefits from a dedicated day head in lieu of the standard cloakroom. The cabinetry showcases a refined blend of smoked eucalyptus figured high sheen satin set against silver oak in low build open grain satin, with upgraded hard surfaces replacing standard Minerva for en suite vanity tops, flooring and shower bulkheads, and the same premium material elevating interior bar tops. Timber flooring flows through the galley and helm and continues into the dining area, while security and discretion are addressed with safes concealed within the master stateroom cabinetry and the forward VIP cabin, complemented by key lockable doors for both spaces. Thoughtful inventory completes the picture: Royal Daulton Fusion White crockery comprising 10 dinner plates, 10 side plates, 10 soup bowls with plates, 10 cups and saucers, 1 teapot, 1 creamer jug, 1 covered sugar bowl and 1 salt and pepper pot; Robert Walsh cutlery including 10 dinner knives, 10 dinner forks, 10 dessert spoons, 10 soup spoons, 10 teaspoons and 4 serving spoons; Darlington Crystal glassware with 10 double dimple old fashioned tumblers TU10/5/P and 10 Elegance champagne flutes SP410; and Royal Daulton Fusion White crew crockery of 4 dinner plates, 4 side plates, 4 soup bowls and 4 mugs with Robert Walsh Facet Bright crew cutlery of 4 dinner knives, 4 dinner forks, 4 dessert spoons and 4 teaspoons. Guest accommodation is versatile, with the starboard guest cabin arranged with 2 single berths and the port guest cabin featuring slidable single berths that unite to form a double berth.

## Exterior fit-out

---

Connectivity with the sea and shore is effortless thanks to main deck glazing that includes pantograph doors from both the galley and the helm to the side deck, plus a starboard side sliding saloon door. A hydraulic lifting platform offers a maximum lift capacity of 650 kg with a tender limit of 550 kg, while a

Besenzoni 5 m hydraulic telescopic passerella extends a confident welcome in any marina. The flybridge hardtop is upgraded with a tilting vane system in lieu of a soft retractable central canopy. At the bow and stern, anchoring and mooring hardware are comprehensive: 2 Lewmar C4 24V DC vertical capstans port and starboard; polished stainless steel mooring bollards on the foredeck and aft main deck with fairleads; 2 sets of polished stainless steel spring cleats port and starboard on the bulwarks; and a pair of retractable cleats for the tender on the aft platform. Twin Lewmar V8 24V DC windlasses with vertical gypsies and capstan drums are paired with manual hand wheel brakes and devil's claw chain stoppers, deploying 1 x 80 kg Lewmar galvanised claw anchor and 1 x 50 kg galvanised claw anchor on 1 x 100 metres and 1 x 60 metres of 12 mm high tensile galvanised short link chain with anchor swivels; a freshwater pressure wash with directed outlet keeps chain runs clean. Exterior detailing is impeccable, from the carbon fibre companionway hatch atop the fly stairs to the carbon fibre and polished stainless ensign staff sized for a 2.5 yard ensign, and 2 ten man canister liferafts housed in a stainless steel deck frame. The aft deck invites lingering meals with a table and 8 chairs, plush seating cushions and bespoke Coco Wolf loose furniture for the X TEND, plus the X TEND Sun lounge Transforma whose platform locker door folds out electrically to reveal an expansive waterside sun lounge or folds up to create an aft deck lounge with bi fold stern glazed safety rails. Practical touches include a 50 litre cockpit refrigerator behind a vented GRP door in the aft cockpit and a twin beam remote controlled halogen searchlight. Forward, cushions with an optional folding sunbed elevate the foredeck into a private retreat. On the flybridge, the bar's spray finished mouldings and doors complement a raised shelf bar top with LED lighting, served by a 108 litre refrigerator with integral freezer, 2 stainless steel drawer refrigerators with water cooled compressors and a Marine Electric stainless steel BBQ grill. Protection and privacy are complete with flybridge instrument and seating/sunpad/table/helm seat covers, a windscreen cover, foredeck

seating/sunpad/table covers, aft cockpit seating covers, an electrically operated aft cockpit privacy screen and a parasol with offset post with 2 sockets on either side of the foredeck. Underfoot, teak decking spans the aft cockpit, side decks, forepeak, aft lower deck platform and flybridge, with a teak table featuring a v groove fixed top on stainless steel legs at the foredeck and a teak table with a v groove folding top on stainless steel legs on the flybridge.

## Other systems

---

Onboard climate control is engineered for the tropics with a marine air chilled water system rated at 222,000 BTU, running quieter WhisperCool DC fans throughout. Freshwater systems are equally robust, built around a 1,400 litre integral GRP tank (WRAS approved for potable water) with an AC self priming pump and manifolded inlet/discharge, a marina connection regulator, and purifiers serving the galley and all independent icemakers. Domestic hot water is abundant via a 200 litre stainless cased calorifier with 2 x 2 kW immersion heaters, a 60 litre expansion tank and a ring main hot water circuit across lower and main decks driven by a continuously running AC circulation pump, complemented by a second Surejust horizontal 200 litre stainless cased calorifier with 2 x 2 kW immersion heaters. Deck convenience includes a handheld swimming shower and a freshwater deck wash system with hose reel and outlets on the aft deck, flybridge deck and foredeck, while standby 24 VDC self priming, pressure controlled freshwater pumps add redundancy. Water quality is elevated by an Octo Marine Compact Water Softener fitted in line from the vessel's freshwater shore supply. Grey water from showers and basins drains to sump boxes and into an upgraded 850 litre grey water tank; grey water from the galley discharges directly overboard or to the tank, with the tank emptied by a 24 VDC pump directly overboard or via shoreside suction through a deck fitting

when available. Shore power flexibility is expanded with a second connection using 1 x 63 Amp 250 V rated flexible three core cable at 20 m. Digital life onboard is seamless: a router links the yacht to the internet via Wi-Fi or cellular data and can join available Wi-Fi networks, with 4 wireless access points distributed throughout, dual SIM capability for 3G/4G access and a combined cellular and Wi-Fi signal booster antenna. Lighting sets the mood and enhances safety with stainless steel LED courtesy lighting from aft cockpit to bow along the side decks and bow seating group, additional stainless steel LED courtesy lights on the steps to the flybridge and LED strip lighting on the bathing platform steps, stainless steel LED downlights in the cockpit overhead and on the hardtop or radar hoop with LED low level strip lighting beneath all seating, bedside wall lamps in both the forward VIP cabin and master stateroom, dimmable Vimar switches on all overhead lighting, and 8 dual white/blue underwater lights.

## Galley

---

The galley is a chef's ally, with custom integrated refrigeration featuring a stainless steel interior providing 250 litres of fridge capacity and 120 litres of freezer capacity, a Miele electric oven and matching Miele microwave, a Miele 4 ring ceramic hob beneath an integrated extractor fan, a full size dishwasher, a Miele wine cooler for 34 bottles and additional under counter custom integrated drawer refrigeration to keep service flowing smoothly.

## Crew Lounge

---

The crew lounge is smartly equipped for autonomy and comfort, featuring a microwave oven, an 80 litre refrigerator with integral freezer, separate Miele washing machine and tumble dryer, and a Fusion Apollo head unit offering AM/FM radio, USB input, Bluetooth and Apple AirPlay connectivity to users'

devices, driving 2 Fusion ceiling speakers in the crew mess and additional speakers in each cabin; entertainment is completed by a 24" HD TV in the crew mess.

## Navigation Equipment

---

The Simrad Premium Package delivers a commanding bridge experience. At the main console, 2 Simrad NSO evo3S 24" multifunctional touchscreens are paired to an OP50 remote keypad controller, complemented by an additional 10" touchscreen dedicated to Cm8 Sunseeker monitoring. Awareness is elevated by a Simrad Halo 6 pulse compression radar (6 ft, 72 nm) with velocity track, a Simrad GS25 GPS antenna, Simrad AP44 autopilot, Simrad HS100 VHF with DSC and a 2.4 m whip VHF antenna, plus a Simrad depth/speed/depth transducer with water temperature B744V and SonarHub module, Simrad StructureScan 3D side scan transducers with a SonarHub 3D module, a Simrad NAIS500 Class B AIS transponder with dedicated 2.4 m whip antenna and GPS receiver, a Simrad 110WX ultrasonic wind sensor and a Richie Helmsman HF 7438 flush mount magnetic compass. On the flybridge console, there are 2 Simrad NSO evo3S 16" touchscreen multifunction displays with an OP50 keypad controller and an additional 7" touchscreen for Cm8 Sunseeker monitoring, together with a Simrad AP44 autopilot and a second station Simrad HS100 VHF with DSC; the installation also includes 2 Simrad NSO evo3S 26" touchscreen multifunction displays with an OP50 keypad controller, another 7" Cm8 Sunseeker monitoring touchscreen, a Simrad AP44 autopilot and a second station Simrad HS100 VHF DSC. Console items include compass swinging and adjustment with a correction card. In the crew cabin, navigation support is provided by a Simrad NSS12 Evo3S 12" chart plotter multifunction colour touchscreen and a third station Simrad HS100 VHF.

---

## Platinum Package Upgrade - Factory Fit Options

---

The Platinum Package elevates capability and comfort with a fin stabilisation system effective underway and at rest, a flybridge hardtop featuring a retractable centre canopy and aft extending sun canopy, tropical spec air conditioning with quieter fans, dual Kohler generators (1 x 28 kW 50 Hz and 1 x 35 kW 50 Hz), a second shore power connection, a hydraulic stern thruster, and a fuel polishing system designed to eliminate algae and water build up in the tank with 99.8% water and partial removal. Onboard ambience and utility are further enhanced by dimmable switches on all overhead lighting, 2 stainless steel drawer refrigerators with water cooled compressors in the flybridge wet bar, additional under counter galley refrigeration, teak flybridge decking, a pair of retractable cleats for the tender on the aft platform, additional stern spring cleats, a carbon fibre companionway hatch at the top of the fly stairs and spring mattresses for all cabin beds.

---

## Entertainment Equipment - Upgraded Performance AV Package

---

Entertainment has real presence throughout. In the saloon, a Samsung 55" The Frame UHD 4K QLED Smart TV with Apple TV app and AirPlay 2 is paired with an Ultra HD Blu ray player, Sonance upgraded front and rear speakers, Sonos Amps and a Sonos Subwoofer; the dining area adds 2 further Sonance speakers with a Sonos Amp. In the galley, a Samsung 43" UHD 4K Smart TV with Apple TV app and AirPlay 2 is matched to Sonance speakers and a Sonos Amp. The master stateroom features a Samsung 55" The Frame UHD 4K QLED Smart TV with Apple TV app and AirPlay 2 and an Ultra HD Blu ray player with Sonance upgraded front and rear speakers powered by Sonos Amps. The forward VIP cabin offers a Samsung 55" UHD 4K Smart TV with Apple TV app and AirPlay 2 with Sonance speakers and a Sonos Amp; the port mid cabin

includes a Samsung 43" UHD 4K Smart TV with Apple TV app and AirPlay 2 and Sonance speakers with a Sonos Amp; and the starboard mid cabin presents a Samsung 32" HD Smart TV with the Apple TV app and Sonance speakers with a Sonos Amp. Outdoors, the aft cockpit zone audio features 4 x 8" Sonance Extreme speakers driven by a Sonos Amp, the flybridge deck zone combines 4 x 8" Sonance speakers with 2 x 6" Sonance Extreme speakers on a Sonos Amp, and the foredeck zone provides 2 x 6.5" Sonance Extreme speakers driven by a Sonos Amp.

## Key Features in Detail

---

Navigation and control are anchored by an exceptional suite: the advanced SIMRAD NSO EVO3S navigation system brings large, high resolution touchscreens for precise, intuitive command in all conditions, Sunseeker's signature CM8 monitoring platform delivers real time oversight of power, fuel, stabilisers and navigation for seamless operation underway or at anchor, and an aft cockpit docking station places the yacht's controls exactly where visibility is best for precise manoeuvres. Performance and engineering are equally compelling, with 2 x MTU 12V 2000 M96 engines showing approximately 300 hours, CMC fin stabilisers to keep passages smooth and anchorages serene, twin generators at 28 kW 50 Hz and 35 kW 50 Hz, and a fuel polishing system that prevents build up in the tanks to protect engine health over the long term. Life on deck is spectacular: the X-Tend Beach Club transforms the fold down transom into a luxurious waterside lounge or folds up to expand seating in the cockpit; a welcoming bow seating area offers a favourite vantage point; the expansive flybridge easily seats 12 for dining and entertains with a fully equipped bar and barbecue; full teak decking elevates every step; a special hardtop design with retractable centre canopy and aft extending sun canopy lets you bask under the stars or retreat to shade; and an Opacmare davit on the flybridge enables carrying two toys — a jet ski aloft and a tender

on the aft platform. Interior comfort follows suit with a 4 cabin layout and fully fitted crew quarters, a luxurious design language that blends dark and light carpentry with elegant soft furnishings and contemporary ceiling lighting, a beautifully detailed dining area, and a fully equipped galley including a wine fridge, dishwasher, baking oven and additional under counter fridge drawers. Premium flooring choices balance practicality and indulgence with wooden floors on the main deck and lower deck lobby and plush carpeting in all cabins. Entertaining is effortless: the cockpit and flybridge flow for socialising and alfresco dining, the hardtop opens to the sky for night watch reverie, the X Tend beach club and generous swim platform bring you to the water's edge, and the airy saloon with full height glass, rich materials and mood lighting welcomes you from day into night. Meticulously maintained and lavishly specified, this Sunseeker 88 is a rare opportunity to unite thrilling performance with serene retreat in one remarkable yacht.

# CONTACTS

---

Shestakov Yacht Sales is a brokerage company specializing in the sale and service of yachts worldwide. The company offers services for buying and selling both new and used motor yachts, sailing vessels, and luxury superyachts. They also provide yacht registration, insurance, technical maintenance, crew selection, and charter organization services across the U.S., Canada, Latin America, the Caribbean, and the Bahamas.

The founder and lead broker of the company is Andrey Shestakov, a licensed and certified expert with extensive experience in marine engineering and shipbuilding.

The company has an extensive network of partnerships with major yacht manufacturers worldwide and provides services in multiple languages, including Russian, Ukrainian, Spanish, and English. The office is in Dania Beach, Florida, USA.

For more information and to view available yachts, you can visit the company's official website: <https://shestakovyachtsales.com>

## Contact details

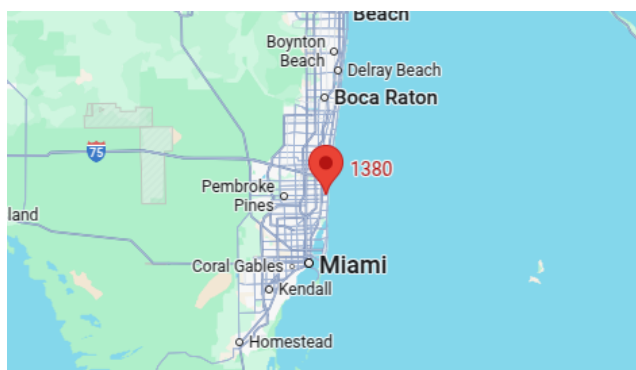
---

**Phone:** +1(954)274-4435

**Email:** [andrey@shestakovyachtsales.com](mailto:andrey@shestakovyachtsales.com)

## Address

---



1380 Weeping Willow Way, Hollywood,  
Florida 33019