



SUNSEEKER - SUNSEEKER

Builder: [Sunseeker](#)

Beam: 21' 0" (6.48 m)

Year Built: 2021

Max Draft: 21' 1" (6.42 m)

Model: 86 Yacht

Price: \$5,450,000 USD Subject to change.

[See full listing on our website](#)

Location: Miami, United States

LOA: 86' 0" (26.29 m)

If you would like to buy a yacht **SUNSEEKER - SUNSEEKER** or would like help answering any questions concerning purchasing, selling, or chartering a yacht, please call **+1(954)274-4435** or click here on <https://shestakovyachtsales.com>

TABLE OF CONTENTS

OVERVIEW	3
SPECIFICATIONS	4
Basic Information	4
Dimensions	4
Speed, Capacities and Weight	4
Accommodations	4
Hull and Deck Information	5
Engine Information	5
GALLERY	6
DETAILED DESCRIPTION	21
CONTACTS	31

OVERVIEW

This 2021, 86' Sunseeker embodies understated grandeur and spirited performance, a flybridge motor yacht with true superyacht presence. With a broad 21'3" beam it carries a sleek, cohesive profile and an interior meticulously arranged to welcome four sumptuous staterooms, each with its own en-suite, accommodating up to eight guests in refined comfort. Propulsion comes from twin MTU 12V2000 M96L engines with low hours (447 and 453), which summon a confident 23-knot cruising pace—marrying performance-yacht poise with hushed reliability for extended passages. The clever layout, high-end finishes and abundant social spaces make her equally adept at elegant entertaining or serious bluewater cruising. A recent five-year survey has been completed; the bottom and running gear were freshly serviced, the hull waxed, all mechanical services are current, and the A/C system has been professionally tuned.

SPECIFICATIONS

Basic Information

Category:
Motor yachts

Year Built:
2021

Model Year:
2021

Country:
United States

Dimensions

LOA:
86' 0" (26.29 m)

Max Draft:
21' 1" (6.42 m)

Beam:
21' 0" (6.48 m)

Speed, Capacities and Weight

Water Capacity:
370 Gallons

Fuel Capacity:
2907 Gallons

Accommodations

Total Heads:
4

Hull and Deck Information

Hull Material:

Fiberglass and Plastic Yachts

Hull Designer:

N/A

Deck Material:

Fiberglass

Interior Designer:

N/A

Hull Configuration:

N/A

Engine Information

Engines:

2

Engine Type:

Inboard

Manufacturer:

MTU

Fuel Type:

Diesel

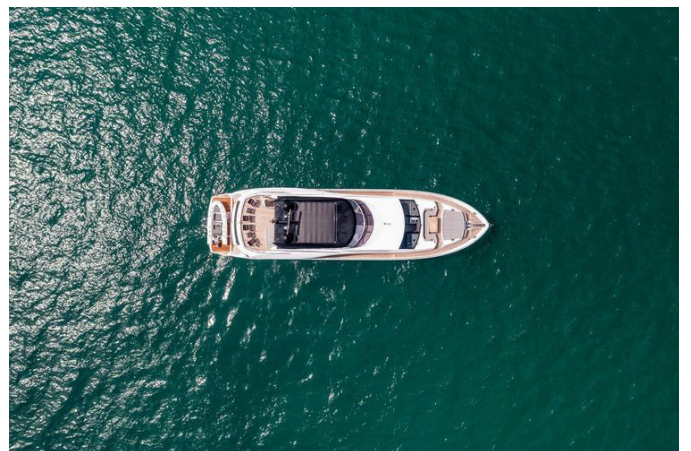
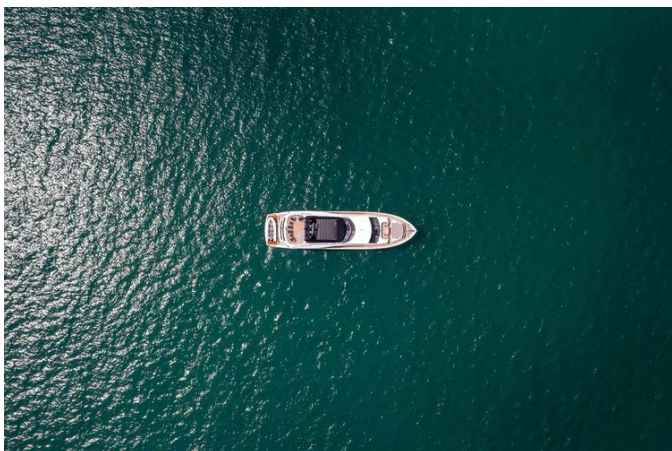
GALLERY



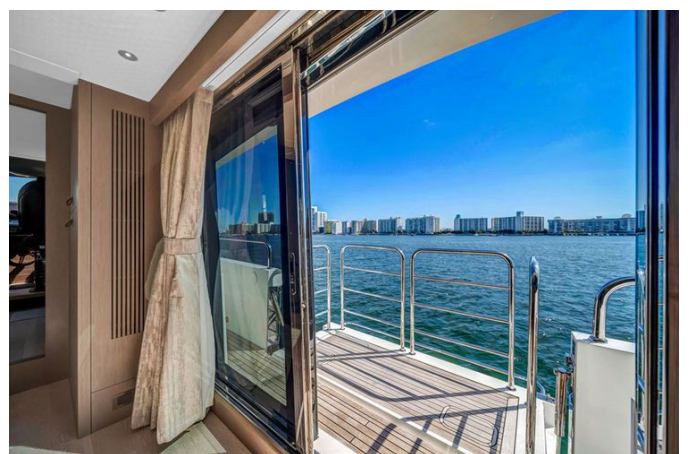
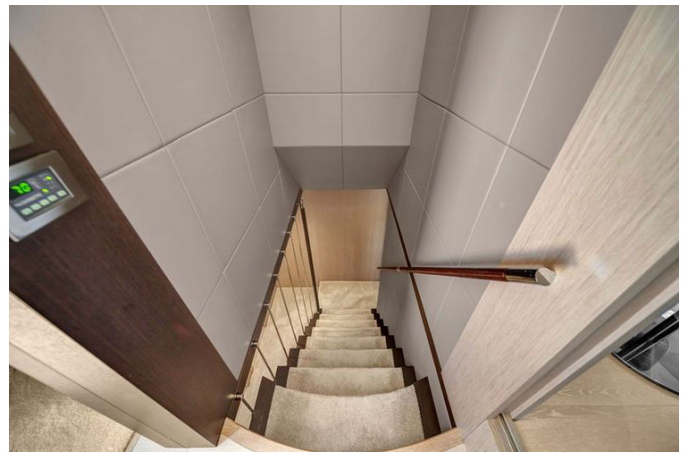
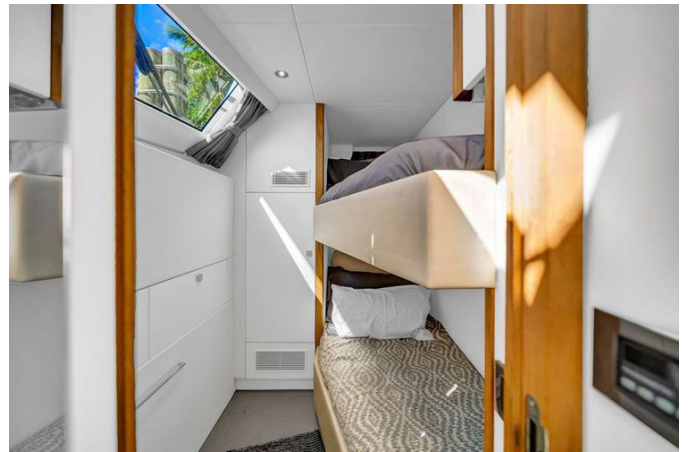






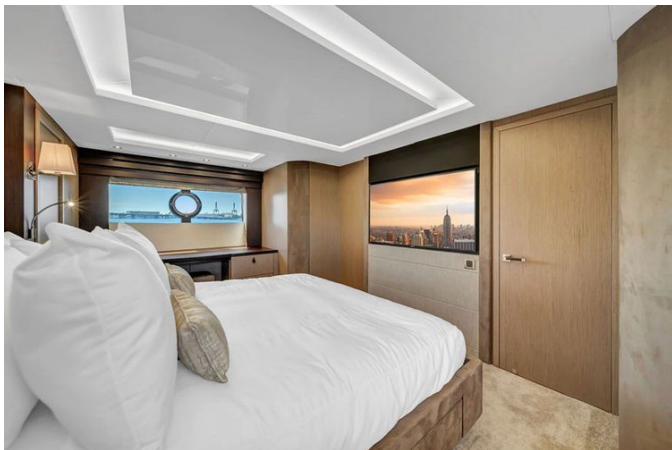






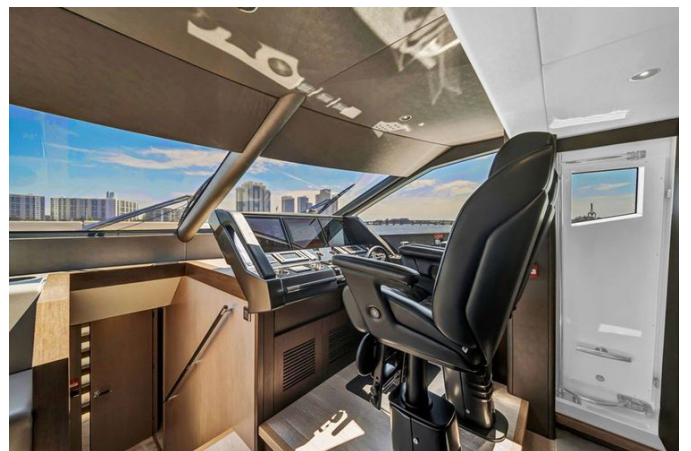


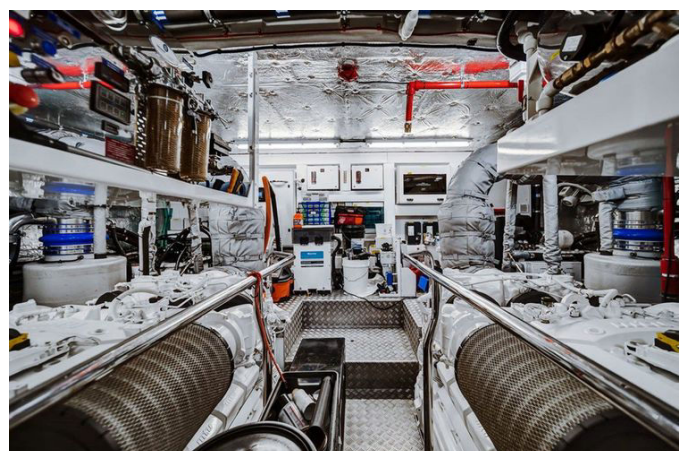
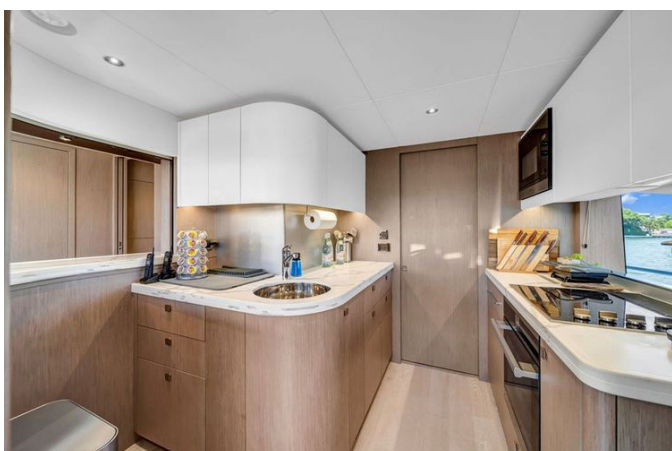














DETAILED DESCRIPTION

Flybridge

Command the horizon from a flybridge crowned by a sleek carbon fiber hardtop and finished in elegant teak decking, where comfort and control converge. Enter via the companionway hatch at the top of the stairs from the aft cockpit to the flybridge deck and settle into the generous sun pad while the AFI dual trumpet horn announces your presence and a CCTV camera keeps watch aft. Entertaining is effortless with a Kenyon electric BBQ grill, a Victrifrigo ice maker served by a dedicated water purifier for the icemaker, a Coolmatic flybridge refrigerator, and a convenient flybridge cool-chest. Rinse down with a fresh water deck wash outlet and let the soundtrack carry across the open air through six Sonance VP65R XT Extreme speakers energized by Sonos Connect and an amplifier. Precision navigation is at your fingertips with a Simrad chart plotter, a Simrad autopilot system, twin Simrad IS42 multifunction instruments displaying speed, depth, and compass, and a Simrad second-station RS90s VHF with DSC—every element poised for confident cruising from the best seat in the house.

Foredeck

The foredeck invites lingering moments with a natural-finish teak table and plush sunpad cushions, set against the assurance of a Lewmar twin anchor arrangement at the bow. A fresh water deck wash outlet keeps this social haven pristine, while two Sonance VP65R XT Extreme speakers with Sonos Connect and amplifier extend the yacht's signature soundstage right to the front row of the sea.

Aft cockpit

Sheltered within a rear camper enclosure with Sunbrella Plus windows, the aft cockpit becomes a versatile lounge and working deck in one. Handling is effortless with two Lewmar C4-24V winches, stern spring cleats positioned on the aft edge of the hull for secure stern mooring, and a retractable boat hook plus two deckwash connectors on standby. Entertaining flows with a cockpit refrigerator and a four-speaker Sonance VP65R XT Extreme array driven by Sonos Connect and an amplifier, while a fresh water deck wash outlet keeps the scene immaculate. Power is neatly managed by a Glendinning Cablemaster with a single power feed and recovery AC shorepower cable, ensuring seamless convenience dockside or at rest.

Bathing platform

At water's edge, standard stern lockers frame a hydraulically lifting bathing platform rated for a maximum lift capacity of 650 kg with a tender maximum weight of 550 kg, complete with retractable cleats for the tender. A fresh water marina connection with pressure regulator, a handheld Whale Twister swimming shower, and a folding stainless steel bathing ladder create a refined watersports launch that is as safe as it is inviting.

Saloon

The saloon balances bespoke cabinetry with a welcoming ensemble of a coffee table, port and starboard sofas, and two club chairs, all framed by aft sliding door curtains and refined Roman blinds. Evenings unfold around a Samsung 65" television with a Blu-ray player, Sonos Playbar and Sonos Subwoofer, and Apple TV—technology woven discreetly into a space designed for effortless conversation and cinematic immersion.

Galley

A chef's-ready galley features a custom integrated Frigoboat refrigerator complemented by a Miele electric oven, a Miele microwave, a Bosch hob extractor fan, and a full-size Miele dishwasher, all supported by a basic first aid kit and an elegant Robert Walsh cutlery set. Function meets finesse in a workspace crafted for flawless service morning to night.

Main helm console

From the main helm, a Sleipner digital fin stabilization system control panel underpins confident passage-making, integrated with a Simrad NSO processor and OP50 controller driving three Hatteland "System X" 19" Glass Bridge displays—two dedicated to navigation and one to monitoring. A Simrad Halo 6 Pulse Compression Radar with a 72nm range and a 6 foot open array with Velocity Track, a Simrad GS25 GPS antenna, and a Simrad autopilot system with QS80 control ensure precise situational awareness. Two Simrad IS42 multifunction instruments display vital navigation information, while the Simrad Sonar Hub with B744V speed depth transducer probes the seascape below. Communication and visibility are enhanced by a Simrad RS90s VHF with DSC, a Simrad AIS NAIS 500 Class B transponder with integrated GPS receiver, and wireless access control for iPad via the boat's network. For observation and comfort, a 24" television with a Speakercraft CRS8 speaker completes the command environment.

Forward VIP cabin

The forward VIP indulges with a sprung mattress for deeply restful sleep and an entertainment suite featuring a Samsung 43" television, Blu ray player, Sonos Beam soundbar with Sonos Subwoofer, and Apple TV. It is a serene

sanctuary where elevated comfort meets immersive technology.

Forward en suite

The forward en suite pairs convenience and quiet with a Tecma Silent Plus standard toilet and a dedicated air conditioning outlet, ensuring a cool, discreetly luxurious start and finish to every day.

Master stateroom

The master stateroom centers on a sumptuous sprung mattress and climate mastery via tropical specification air conditioning in two zones, ensuring personalized comfort. Entertainment is cinematic with a Samsung 55" television, a Blu-ray player system, a Sonos Playbar and Sonos Subwoofer, Speakercraft WH6, and one rear speaker driven by a Sonos Connect Amp, complemented by Apple TV. Dimmer switches on the overhead interior lighting tailor the ambiance from sunrise calm to midnight allure.

Master en suite

A master en suite appointed with a Tecma Silent Plus standard toilet and an air conditioning outlet delivers the quiet, cool refinement befitting the yacht's private retreat.

Starboard guest cabin

The starboard guest cabin offers twin comfort with sprung mattresses and tropical specification air conditioning in one zone, configurable with a sliding berth option to transform the twins into a generous double. Entertainment arrives via a 24" television, a Sonos Beam soundbar, and Apple TV—hospitality tailored to every guest.

Port guest cabin

Equally inviting, the port guest cabin features sprung mattresses and tropical specification air conditioning in one zone, with dimmer switches on the overhead interior lighting to shape the mood. A 24" television, Sonos Beam soundbar, and Apple TV complete the refined private retreat, while an option for a sliding berth allows the twins to convert to a double.

Port en suite

Thoughtfully specified, the port en suite includes a Tecma Silent Plus standard toilet and an air conditioning outlet, with the en suite door to the main lobby intentionally omitted for added privacy.

Stern crew mess

The stern crew mess integrates operations and downtime with a Simrad NSS12 evo3 chartplotter multifunction touch display linked to the main network and a Simrad RS90s third station handset 825 06 for seamless communications. Climate comfort comes from tropical specification air conditioning in one zone, while a 24" television with Fusion DVD/CD/Radio, an infrared remote eye with Bluetooth functionality, and Fusion ceiling stereo speakers keep spirits high. Practicality is assured with a separate Miele WWF060 washing machine and Miele T8033C tumble dryer, a Whirlpool microwave oven, and a Waeco refrigerator—everything in its place for ship shape efficiency.

Aft crew cabin

The aft crew cabin ensures restorative rest with sprung mattresses and reliable comfort courtesy of tropical specification air conditioning in one zone.

Forward crew cabin

Forward crew accommodation mirrors the yacht's professional standard, with sprung mattresses and tropical specification air conditioning in one zone for cool, undisturbed sleep between watches.

Console

At the main console, navigation is orchestrated by a Simrad NSO processor with Simrad OP50 controller feeding three Hatteland "System X" 19" Glass Bridge displays—two devoted to navigation and one to monitoring. A Simrad Halo 6 Pulse Compression Radar with a 72nm range and 6 foot open array with Velocity Track, the Simrad GS25 GPS antenna, and a Simrad autopilot with QS80 control knit together for precise course keeping. Two Simrad IS42 multifunction instruments present core navigation data, while a Simrad Sonar Hub with B744V speed depth transducer adds confident depth and speed intelligence. Communications and awareness are reinforced by a Simrad RS90s VHF with DSC and a Simrad AIS NAIS 500 Class B transponder with integrated GPS receiver, with the Simrad suite connected to the boat's network for wireless iPad access control. On the flybridge console, twin Simrad NSS16 evo3 16" chart plotter multifunction displays mirror the command, alongside a Simrad autopilot with QS80 control, two Simrad IS42 instruments for speed, depth, and compass, and a second station Simrad RS90s VHF with DSC. The integration extends below with a Simrad NSS12 evo3 chartplotter multifunction touch display fitted in the crew mess and a Simrad RS90s third station handset in the crew mess 825 06, while a Sanshin Twin Beam HR 1012 24V searchlight stands ready for crisp night operations.

Electrical

The yacht's AV architecture surrounds every moment with rich fidelity: in the saloon, a Samsung 65" television pairs with a Blu-ray player, Sonos Playbar and Sonos Subwoofer, plus Speakercraft WH6.1 rear speakers driven by a Sonos Connect Amp and Apple TV, while the observation area features a 24" television with a Speakercraft CRS8 speaker and Sonos Connect linked to the AV system. The master stateroom hosts a Samsung 55" television, Blu-ray player system, Sonos Playbar and Sonos Subwoofer, Speakercraft WH6.1 rear speakers with a Sonos Connect Amp, and Apple TV. The forward VIP presents a Samsung 43" television, Blu-ray player, Sonos Beam soundbar with Sonos Subwoofer, and Apple TV. In the crew cabin, a 24" television with Fusion DVD/CD/Radio, an infrared remote eye with Bluetooth functionality, and Fusion ceiling stereo speakers pair with Sonos Connect linked to the cabin AV system. Aft port and starboard guest cabins each feature a 24" television, Sonos Beam soundbar, and Apple TV, with this specification repeated in lieu of the master stateroom on five-cabin layouts. Outside, four Sonance VP65R XT Extreme speakers with Sonos Connect and amplifier energize the aft cockpit zone, six Sonance VP65R XT Extreme speakers with Sonos Connect and amplifier enliven the flybridge, and two Sonance VP65R XT Extreme speakers with Sonos Connect and amplifier create a foredeck soundscape. The onboard router provides internet access via Wi-Fi or cellular data and allows linking to available marina Wi-Fi networks; the boat can accept up to 2 user-supplied SIM cards for internet access within 3G-4G coverage, offering data communications only, with airtime, service agreements, and SIM cards the responsibility of the client. Appliances are equally comprehensive: custom galley integrated refrigeration Frigoboat G62800 with a stainless steel interior offers 250 litres of fridge capacity and 120 litres of freezer capacity, supported by a Miele KM5621 four-ring ceramic hob, Miele H6560B electric oven, Miele M6040C microwave, Bosch DHL535B hob extractor fan, and a Miele G6987

SCVi full size dishwasher. Entertaining extends to a U Line 3060ZWC wine cooler in the forward cabinet on the main deck. In the stern crew mess, a separate Miele WWF060 washing machine and Miele T8033C tumble dryer streamline laundry, alongside a Whirlpool WMC10007AW 110V microwave oven and a Waeco CR1080e refrigerator. On deck, a Kenyon electric BBQ grill pairs with a Victrifrigo Ice Maker Classic HYDRO PFT 220V, a Flybridge Refrigerator Coolmatic 80 ltr CRX80, a flybridge cool chest with a Waeco fridge plate CS NC15, and a cockpit refrigerator Waeco 50 ltr CR50 behind a vented GRP door in the aft cockpit. Exterior electricals include CCTV with three cameras—two infrared units in the engine room and one aft facing camera on the flybridge overhang—displaying images on the helm navigation screens, a Glendinning Cablemaster with a single power feed and recovery AC shorepower cable, and an AFI dual trumpet horn 11018 XLPD/24V. Interior electrical security is enhanced by a Superyacht burglar alarm system with sensors at all exterior access points and a swipe type arming and disarming interface. Exterior lighting casts a signature glow with eight Lumishore TIX202 LED underwater lights—four on the stern, two port, and two starboard—shining in white. Interior lighting layers include square LED Blake 4W polished chrome bezel overhead lighting 679988, feature LED Erika 2W perimeter lights in polished chrome 680015, and concealed LED Häfele Loox feature lighting 662337 in the galley; accent pieces include one lower lobby table lamp on the bar top in the main cabins' lower deck stairwell and lobby, Porta Romana Cabochon Lamp Charcoal with Tophat Ghost silk linen shade GLB59, and two saloon table lamps on the side cabinets before the port and starboard sofas, Porta Romana Small Pasteur Lamp Clear with Tall Cylinder putty silk shade. Dimmer switches refine the overhead interior lighting in the saloon, dining, main helm and observation area, forward VIP cabin, lower deck stairwell and lobby, and all lower deck staterooms, with no dimming in en suites, walk in wardrobes, or crew areas.

Engine room

Beneath the deck, propulsion and poise converge with twin MTU 12V 2000 M96L engines rated at 1950 ps each, steadied by Sleipner SPS92 hydraulic stabilizer units with Vector fins for both underway and at anchor stabilization. Electrical independence is assured by two Onan 2 kW 60 Hz (29MDKDS) generators and an isolation transformer, while seamless transfer for AV equipment maintains uninterrupted entertainment when switching between shorepower and generators and during generator changeover via a supported power supply through an inverter. Fuel integrity is protected by a Separ FPS 210 polishing system that eliminates algae buildup and water in the tank with 99.8 percent water and partial removal. Maintenance is streamlined with an oil change system for engines, gearboxes, and generators, a standby fresh water pump with separate pick up and strainer feeding the main water circuit, and preparation for a future water maker with seacock and outlets blanked off, a fresh water feed to the tank, and power supply in place. Hot water demand is answered by a second hot water calorifier for yachts with a spa tub, while precise low speed control remains at hand with a Sleipner SP550HYP bow thruster system and a Sleipner SP550HYP stern thruster system.

Deck & exterior

The exterior is detailed for performance and polish from keel to mast: antifouling in International Interspeed Ultra 300 Black preserves a clean, fast hull, while preparation for the optional flybridge hydraulic crane—complete with aluminum deck plate and wiring—anticipates future versatility. At the bow, a twin anchor arrangement is driven by two Lewmar V8 windlasses serving a Lewmar 80 kg galvanized anchor with 100 metres of 12 mm galvanized chain and a Lewmar 50 kg galvanized anchor with 60 metres of 12 mm galvanized chain. Handling is further aided by two Lewmar C4 24V

winches and a Besenzoni Passerella telescopic Art 383.50 SS. Entertaining and ease are elevated by a water purifier for the icemaker, a hydraulically lifting bathing platform rated to a 650 kg maximum lift with a 550 kg tender maximum weight, and a pair of retractable cleats for the tender on the port and starboard corners of the bathing platform. Stern spring cleats set on the aft edge of the hull secure stern moorings with confidence, while a galley side deck door speeds service. Above, the radar chair and light mast gleam in a gloss black color option, and passage is smoothed by a companionway hatch at the top of the stairs from the aft cockpit to the flybridge deck. Fresh water convenience runs throughout with a deck wash system offering outlets on the bathing platform, flybridge, and foredeck, and a fresh water marina connection with a pressure regulator. At the waterline, a handheld Whale Twister swimming shower and a folding stainless steel bathing ladder stowed beneath a GRP lid promise instant refreshment. For practical service, a stainless sink with tap awaits both on the flybridge and in the aft cockpit, a stainless steel ensign staff and socket stand proud at the stern flybridge, and premium exterior upholstery in Diamante or Sunbrella completes the yacht's sophisticated silhouette.

CONTACTS

Shestakov Yacht Sales is a brokerage company specializing in the sale and service of yachts worldwide. The company offers services for buying and selling both new and used motor yachts, sailing vessels, and luxury superyachts. They also provide yacht registration, insurance, technical maintenance, crew selection, and charter organization services across the U.S., Canada, Latin America, the Caribbean, and the Bahamas.

The founder and lead broker of the company is Andrey Shestakov, a licensed and certified expert with extensive experience in marine engineering and shipbuilding.

The company has an extensive network of partnerships with major yacht manufacturers worldwide and provides services in multiple languages, including Russian, Ukrainian, Spanish, and English. The office is in Dania Beach, Florida, USA.

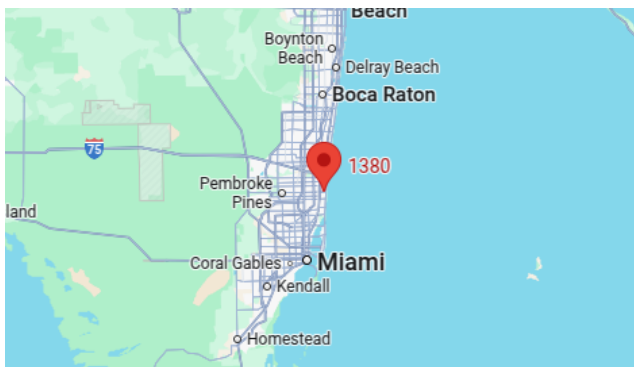
For more information and to view available yachts, you can visit the company's official website: <https://shestakovyachtsales.com>

Contact details

Phone: +1(954)274-4435

Email: andrey@shestakovyachtsales.com

Address



1380 Weeping Willow Way, Hollywood,
Florida 33019