

## SANLORENZO SL86 - SANLORENZO



**Builder:** [Sanlorenzo](#)

**LOA:** 87' 0" (26.70 m)

**Year Built:** 2019

**Beam:** 20' 0" (6.35 m)

**Model:** SL86

**Max Draft:** 6' 3" (1.90 m)

**Price:** \$4,880,000 USD Subject to change.

**Cruising Speed:** 25 Knots (28.77 MPH)

[See full listing on our website](#)

**Location:** Hong Kong, China

**Max Speed:** 32 Knots (36.83 MPH)

---

# TABLE OF CONTENTS

---

<b>OVERVIEW .....</b>	<b>3</b>
<b>SPECIFICATIONS .....</b>	<b>4</b>
Basic Information .....	4
Dimensions .....	4
Speed, Capacities and Weight .....	4
Accommodations .....	5
Hull and Deck Information .....	5
Engine Information .....	5
<b>GALLERY .....</b>	<b>6</b>
<b>DETAILED DESCRIPTION .....</b>	<b>12</b>
<b>CONTACTS .....</b>	<b>16</b>

# OVERVIEW

---

## SANLORENZO SL 86

Sanlorenzo has drawn on decades of shipyard mastery to craft the SL86, uniting signature Italian elegance with forward-thinking innovation and an extraordinary level of bespoke customization within its class. These hallmarks have established the SL86 as one of the most compelling offerings in the 27-meter flybridge motor yacht segment since launch, where expansive salon glazing bathes the interior in natural light and frames panoramic sea views in effortless style.

This 2019 Sanlorenzo 86 is presented in superb condition, showing only 536 hours on the main engines. Teak-laid foredeck, side decks, and walkarounds are impeccably maintained, reflecting careful stewardship throughout. The accommodation plan features four lavish en-suite cabins—two sophisticated doubles and two refined twins—comfortably hosting up to eight guests, while two dedicated crew cabins with bunk berths sleep four, delivering discreet superyacht service and complete privacy.

Her specification is notably comprehensive, emphasizing premium equipment and luxury amenities: the Audio Video Diamond Package; a sleek hardtop with electrically actuated blade-opening roof; atmospheric underwater lights; an upgraded second 25 kW generator; CMC zero-speed electric fin stabilizers for serene comfort both at anchor and underway; teak decking at the bow dinette and across the flybridge; a high-capacity 180 l/h watermaker; and a watertoy collection including a Tender W445T and a jetski.

In essence, this Sanlorenzo SL86 stands in outstanding condition with a motivated seller—an exceptional opportunity in the luxury yacht market for buyers seeking a pedigreed, fast planing flybridge cruiser of distinction. For full details and availability, please enquire.

# SPECIFICATIONS

---

## Basic Information

---

**Model Year:**  
2019

**Country:**  
China

**Year Built:**  
2019

## Dimensions

---

**LOA:**  
87' 0" (26.70 m)

**Max Draft:**  
6' 3" (1.90 m)

**Beam:**  
20' 0" (6.35 m)

## Speed, Capacities and Weight

---

**Cruise Speed:**  
25 Knots (28.77 MPH)

**Water Capacity:**  
449.09 Gallons

**Max Speed:**  
32 Knots (36.83 MPH)

**Fuel Capacity:**  
2113.38 Gallons

**Gross Tonnage:**  
70 Pounds

## Accommodations

---

**Sleeps:**

8

**Crew Cabin:**

2

## Hull and Deck Information

---

**Hull Material:**

Fiberglass and Plastic Yachts

**Hull Designer:**

Officina Italiana Design

**Deck Material:**

GRP

**Interior Designer:**

Officina Italiana Design

**Hull Configuration:**

Monohull

## Engine Information

---

**Engines:**

2

**Engine Type:**

Inboard

**Manufacturer:**

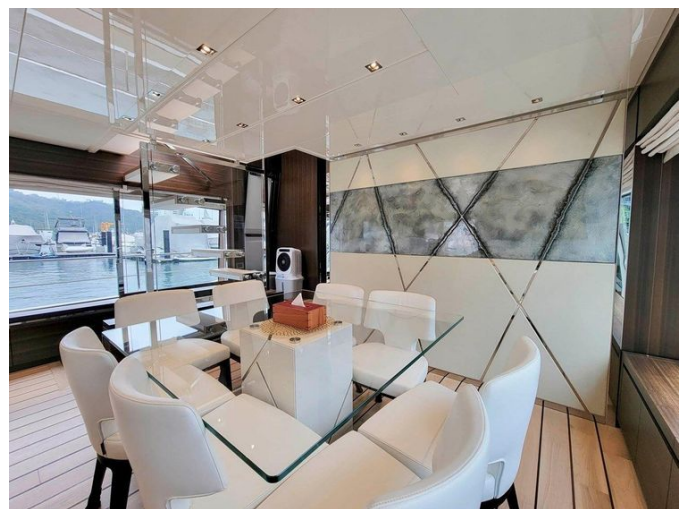
MTU

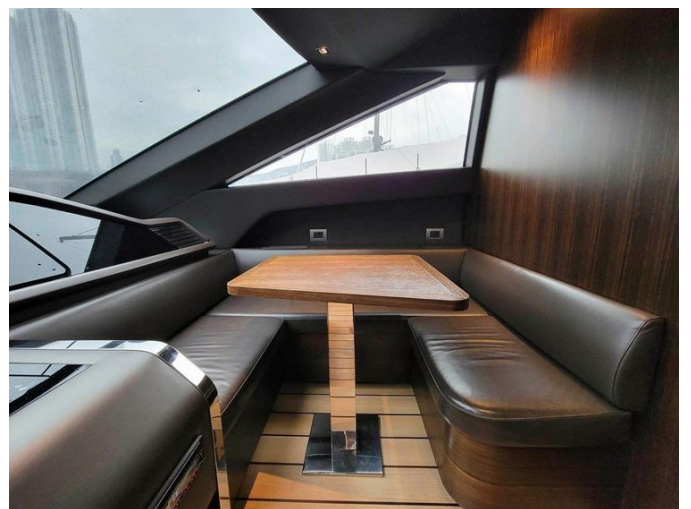
**Fuel Type:**

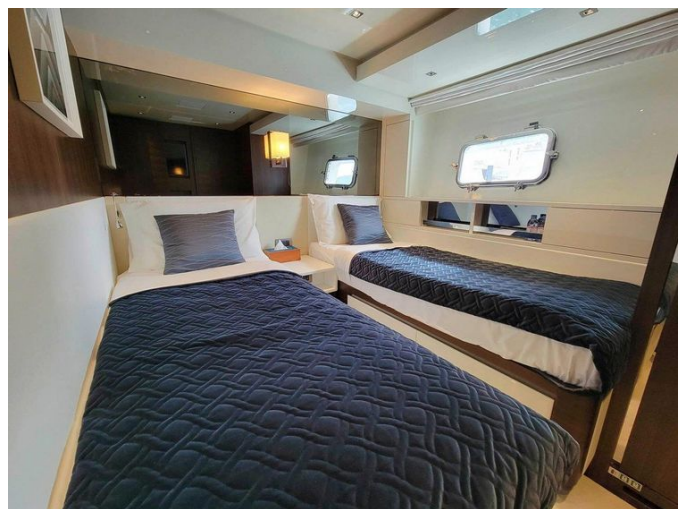
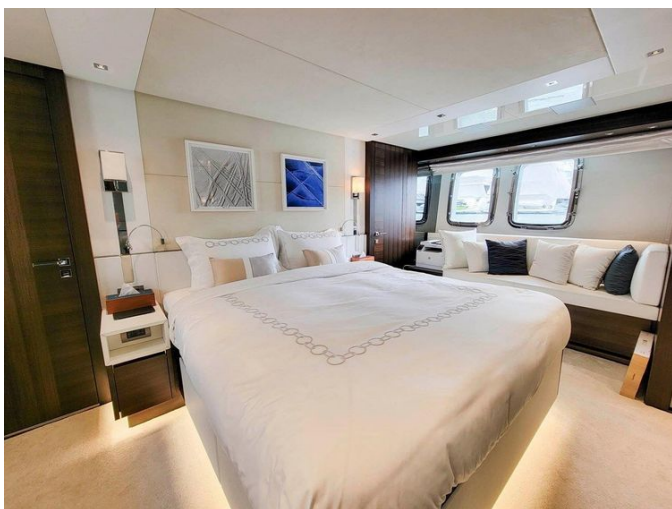
Diesel

# GALLERY













---

# DETAILED DESCRIPTION

---

## Engine

---

Power is delivered by two MTU 12V2000 engines, each rated at 1,947 HP, with engine hours logged at 536 on the port side and 535 on the starboard.

Electrical needs are met by two 25 kW Kohler Power System generators with genset hours of 1,760 on the port unit and 1,762 on the starboard. Seamless propulsion is managed through twin ZF BW 2075V gearboxes for confident, efficient performance.

## Key upgrades

---

Thoughtful upgrades elevate comfort and autonomy, including a 180 lt/h watermaker, the Audio Video Diamond Package, a hardtop with electric blades opening roof, a hydraulic stern thruster, four underwater lights, and a Seatel ST24 satellite antenna. Sun awnings shade the bow area and the stern area of the flybridge, while an upgraded second 25 kW generator pairs with zero-speed electric stabilizer fins by CMC to deliver serene, self-sufficient cruising. Refined finishes abound, from the bow wall in the salon clad in white suede leather with a stainless-steel insert and resin decorative artwork, to teak flooring for the bow dinette and on the flybridge, complemented by a twenty-three-bottle wine cooler in the salon.

## Upgraded options

---

A comprehensive suite of refinements elevates life on board, beginning with the elegant "Grigio Europa" colour glass to the entrance door between salon and cockpit and a matt black painted side door in the salon. The interior is richly finished with a bow wall in the salon clad in white suede leather with a

stainless steel insert and resin decorative artwork, a resin feature panel for the forward dining bulkhead, white leather for the ceiling, and wood floor in the salon crafted in Cadorin walnut with wenge insert, complemented by eucalyptus wood matt finishing for the whole flooring. Cabinetry is meticulously detailed with a horizontal metal frame for the saloon cabinet doors with an upper section in leather with stitching, white hard leather for the top and upper part of the doors on the lower salon cabinet, and doors with horizontal and vertical wood grain in every cabin. The dining area is appointed with a custom dining table, eight Flexform Aline dining chairs, four artworks, and a Roman shade textile curtain, while the salon features a custom coffee table, a decorative lamp, four electric Roman shades, and a Minotti Andrtsen Slim sofa in Minotti Saatchi 15 Binaco fabric. Entertainment and connectivity are delivered by the Audio Video Diamond package with TV included, Apple TV in the salon and owner's cabin, a LED Samsung 55" TV in the owner's cabin, TV cabinets in the guest cabins, a UPS for audio video, and the Raymarine goldpackage.

The owner's and guest spaces have been thoughtfully enhanced with additional bookshelves in the owner's cabin featuring a wood structure, a mirrored back, and a metal antiroll, and antirolls in every cabin covered in leather and stainless steel with stitching. Nightstands in all cabins pair a wood lower section with an upper surface in white leather and a hidden socket, while the wall above the owner's bed is finished in suede white leather with a stainless steel frame above the headboard. A magazine rack in the owner's cabin in suede white leather and plain white leather with stitching adds tactile sophistication. Privacy and comfort are ensured with two electric Roman shades in the owner's cabin, three electric roller blackout curtains in the owner's cabin plus VIP, and two sliding beds in the guest cabins; subtle ambiance is set by six decorative lamps in the owner's, guest, and VIP cabins and strip LED lights under the beds and bedside tables in the VIP and owner's cabins. The bathrooms are elevated with headshowers in all bathrooms,

marble shower walls in the owner's shower (Silk Georgette marble), a Silk Georgette marble wall in the day head, a Silk Georgette marble wall in the VIP shower, and a towel heater in the owner's cabin. Practical luxury includes a lift system for the beds in the VIP and owner's cabins, a Stopsol mirror to hide the TV in the VIP cabin with wood frame, a Sopsol mirror to hide the TV in the owner's cabin, and a wood table with wood frame in the pilothouse.

Culinary and convenience upgrades comprise a cooking top in ceramic glass, an additional Gaggenau/Miele microwave oven, a 150 liter boiler, and a 180 liter per hour watermaker.

On the flybridge, entertaining is effortless thanks to a "U" shaped bar cabinet with Corian top and sides and a teak back, a starboard-side bar cabinet with white Corian Glacier top and side and teak doors, an external refill icemaker within the flybridge bar cabinet, a grill and a teppanyaki plate integrated into the flybridge cabinet, and a 220V socket in the bar cabinet. Seating and lounging options abound with three Summit SO 105 bar stools, three Summit SO 112 sunbeds, a teak custom sofa, and a Gloster Loop armchair with teak structure and cushions, while a TV cabinet with teak doors and white Corian Glacier sides and top keeps entertainment at hand. A table with electric hi lo system on the flybridge with a teak top pairs with a sun awning for the stern area of the flybridge, all protected by a hard top with electric blades opening roof; underfoot, the flybridge is laid in teak. Forward, the bow area hosts an extendable table with up down system, a teak top and stainless steel structure, and a cushion for sunbed transformation, complemented by a sun awning and a teak floor for the bow dinette. In the cockpit, two tables with electric hi lo systems with teak tops and stainless steel frames are matched with four Summit chairs. Added comfort and versatility include an additional cushion on the flybridge staircase cover panel and additional cushions for sunbed transformation to table on the flybridge.

Deck and handling features include a foot switch for the anchor capstan, a foot

switch for the stern warping head with reverse option, and an additional chain length of 27.5 m for two anchors, supported by a hydraulic stern thruster. Nighttime ambiance and safety benefit from four underwater lights and a search light. Navigation and communication are bolstered by a Sat Seatel ST24 antenna, a Seatel ST24 empty radome, and predisposition for two CCTV cameras in the engine room and on the cockpit ceiling and centre aft. Power resilience is ensured with an upgraded second 25 kW generator, while comfort at anchor is guaranteed by zero speed electric stabilizers FINS (brand: CMC). Further finishing touches include Foresti and Suardi handles in every cabin in brown leather and chrome, a bar cabinet on the starboard side of the flybridge with white Corian Glacier surfaces and teak doors, a table with electric hi-lo system on the flybridge with teak top, a teak floor for the bow dinette, white hard leather detailing for the lower salon cabinetry, and a TV included within the Audio Video Diamond package—an ensemble that harmonizes refined aesthetics with technical prowess throughout.

# CONTACTS

---

Shestakov Yacht Sales is a brokerage company specializing in the sale and service of yachts worldwide. The company offers services for buying and selling both new and used motor yachts, sailing vessels, and luxury superyachts. They also provide yacht registration, insurance, technical maintenance, crew selection, and charter organization services across the U.S., Canada, Latin America, the Caribbean, and the Bahamas.

The founder and lead broker of the company is Andrey Shestakov, a licensed and certified expert with extensive experience in marine engineering and shipbuilding.

The company has an extensive network of partnerships with major yacht manufacturers worldwide and provides services in multiple languages, including Russian, Ukrainian, Spanish, and English. The office is in Dania Beach, Florida, USA.

For more information and to view available yachts, you can visit the company's official website: <https://shestakovyachtsales.com>

## Contact details

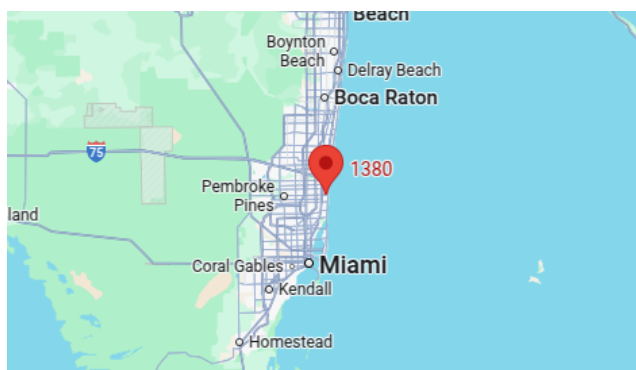
---

**Phone:** +1(954)274-4435

**Email:** [andrey@shestakovyachtsales.com](mailto:andrey@shestakovyachtsales.com)

## Address

---



1380 Weeping Willow Way, Hollywood,  
Florida 33019