

## SANLORENZO SL86 - SANLORENZO



**Builder:** [Sanlorenzo](#)

**LOA:** 87' 0" (26.77 m)

**Year Built:** 2019

**Beam:** 20' 0" (6.34 m)

**Model:** SL86

**Min Draft:** 20' 4" (6.20 m)

**Price:** \$5,783,294 USD Subject to change.

**Max Draft:** 21' 0" (6.40 m)

[See full listing on our website](#)

**Location:** Kuala Terengganu, Malaysia

**Cruising Speed:** 22 Knots (25.32 MPH)

**Max Speed:** 32 Knots (36.83 MPH)

---

# TABLE OF CONTENTS

---

<b>OVERVIEW .....</b>	<b>3</b>
<b>SPECIFICATIONS .....</b>	<b>4</b>
Basic Information .....	4
Dimensions .....	4
Speed, Capacities and Weight .....	4
Accommodations .....	5
Hull and Deck Information .....	5
Engine Information .....	5
<b>GALLERY .....</b>	<b>6</b>
<b>DETAILED DESCRIPTION .....</b>	<b>13</b>
<b>CONTACTS .....</b>	<b>18</b>

# OVERVIEW

---

## SANLORENZO SL86

Drawing on decades of Italian craftsmanship and yachtbuilding savoir faire, Sanlorenzo conceived the SL86 as a showcase of signature styling, forward thinking engineering and a peerless level of customisation within its class.

These qualities have made the SL86 a standout in the 27 metre luxury motor yacht arena since debut. Vast glazing floods the saloon with daylight, framing sweeping sea views and creating a serene, open ambience that blends interior and horizon.

Delivered in 2019, this example presents in outstanding condition, showing only 536 hours on the main engines. Teak lays the side decks and all exterior walkways, impeccably maintained and beautifully faired throughout.

Accommodation comprises four sumptuous en suite cabins: two with double berths and two with twins, comfortably sleeping eight guests. Complementing this, the crew quarters include two cabins with bunk beds, providing secure, practical berths for a professional team of four.

Specified to an exceptional standard, the yacht features the coveted Audio Video Diamond Package, a hardtop with electric blade slatted opening roof, underwater lights, teak flooring at the bow dinette and teak laid on the flybridge, plus a 180 L/h watermaker.

In short, this Sanlorenzo 86 is turn key and better than immaculate, offered by a motivated seller—an unmissable opportunity in the planing flybridge motor yacht segment.

# SPECIFICATIONS

---

## Basic Information

---

**Model Year:**  
2019

**Country:**  
Malaysia

**Year Built:**  
2019

## Dimensions

---

**LOA:**  
87' 0" (26.77 m)

**Beam:**  
20' 0" (6.34 m)

**Min Draft:**  
20' 4" (6.20 m)

**Max Draft:**  
21' 0" (6.40 m)

## Speed, Capacities and Weight

---

**Cruise Speed:**  
22 Knots (25.32 MPH)

**Water Capacity:**  
449.09 Gallons

**Max Speed:**  
32 Knots (36.83 MPH)

**Fuel Capacity:**  
2113.38 Gallons

**Gross Tonnage:**  
59 Pounds

## Accommodations

---

**Sleeps:**

8

**Crew Cabin:**

2

**Total Heads:**

5

**Crew Berths:**

3

## Hull and Deck Information

---

**Hull Material:**

Fiberglass and Plastic Yachts

**Hull Designer:**

Officina Italiana Design

**Deck Material:**

Fiberglass

**Interior Designer:**

Officina Italiana Design

**Hull Configuration:**

Planing

## Engine Information

---

**Engines:**

2

**Engine Type:**

Inboard

**Manufacturer:**

MTU

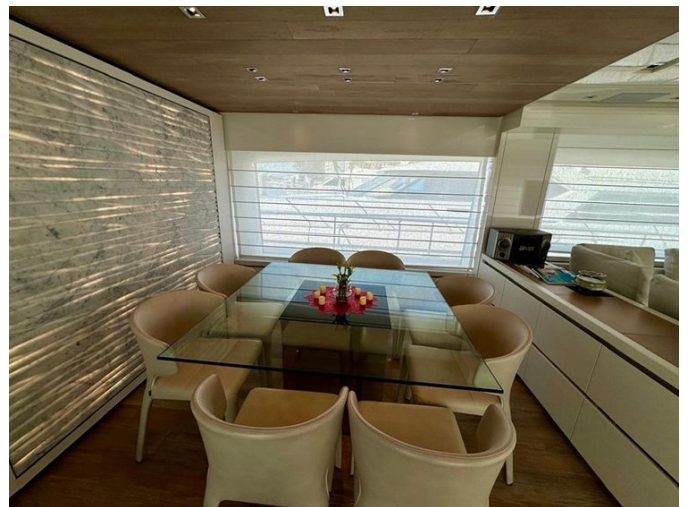
**Fuel Type:**

Diesel

# GALLERY

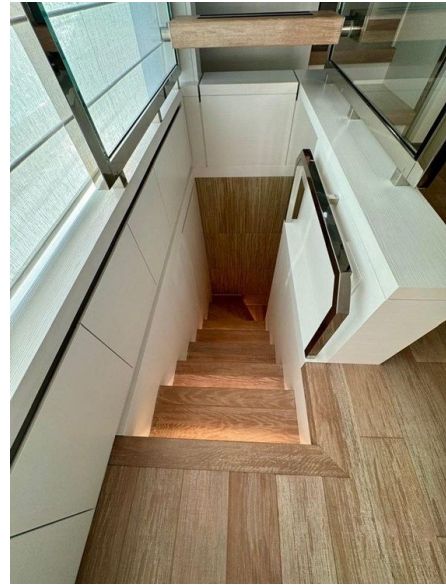














---

# DETAILED DESCRIPTION

---

## Engine

---

Power is delivered by two MTU 12V2000 diesel engines, each rated at 1,947 HP, showing 536 hours on the port engine and 535 hours on the starboard. Electrical needs are handled by two 25 kW Kohler Power System generators, with genset hours of 1,760 on port and 1,762 on starboard. Propulsion is smoothly managed through two ZF BW 2075V gearboxes, ensuring refined performance and dependable control.

## Key upgrades

---

Thoughtfully specified, this yacht features a 180 lt/h watermaker and the Audio Video Diamond Package for immersive entertainment. The hard top with electric blades opening roof invites open air cruising, while a hydraulic stern thruster and zero speed electric stabilizer fins (brand: CMC) deliver confident handling and serene comfort at anchor. Illumination is enhanced by four underwater lights, and connectivity arrives via a SAT Seatel ST24 antenna. For all day relaxation, there is a sun awning for the bow area and another shading the stern area of the flybridge. Power redundancy comes from an upgraded second 25 kW generator. Interior refinements include a bow wall in the salon finished in white suede leather with a stainless steel insert and resin decorative artwork, complemented by a teak floor for the bow dinette and a teak floor on the flybridge. Entertaining is elevated by a twenty three bottle wine cooler in the salon.

## Upgraded options

---

A refined suite of upgrades elevates every moment on board, beginning with

the “Grigio Europa” tinted glass entrance door that links salon and cockpit with a sophisticated, seamless glow. In the salon, bespoke artistry and tactile luxury abound: the bow wall is finished in white suede leather with a stainless steel insert and resin decorative artwork; cabinet doors feature a horizontal metal frame with an upper section in leather with meticulous stitching; a white hard leather top and upper door sections crown the lower cabinet; a custom coffee table and custom dining table anchor the space; a decorative lamp adds ambience; and a Minotti Andersen Slim sofa, upholstered in Minotti Saatchi 15 Bianco fabric, invites relaxed gatherings. Four electric Roman shades tailor the light, while the ceiling is wrapped in white leather and the floor is executed in Cadorn walnut with a wenge insert, complemented throughout the yacht by a eucalyptus wood matte flooring finish. Entertainment and culinary convenience are equally considered with a 23-bottle wine cooler, Apple TV in the salon, a ceramic glass cooking top, and an additional Gaggenau/Miele microwave oven. A matt black painted side door enriches the salon’s architectural edge, Roman shade textile curtains soften the interiors, and a resin feature panel highlights the forward dining bulkhead.

The flybridge is transformed into a spectacular open-air lounge with an elegant “U”-shaped bar cabinet featuring a Corian top with Corian sides and a teak back, joined by a starboard bar cabinet with white Corian Glacier top and side and teak doors. The service ensemble is comprehensive, including a grill, a teppanyaki plate, an external refill icemaker, a 220 V socket in the bar cabinet, and a TV cabinet with teak doors and white Corian Glacier sides and top. A teak-topped table with an electric hi-lo system adapts from dining to lounging, while a teak custom sofa, a Gloster Loop armchair with teak structure and cushions, three Summit SO 105 bar stools, and three Summit SO 112 sunbeds define effortless comfort. The flybridge floor is teak, the hard top features an electric blades opening roof for precise shade control, and a sun awning shelters the stern area. An additional cushion on the flybridge staircase cover panel and additional cushions for transforming the sunbed to a table

configuration further enhance versatility.

On deck, the bow area hosts an extendable table with an up-down system, a teak top, and a stainless steel structure, including a cushion for sunbed transformation, all protected by a dedicated sun awning. A teak floor enriches the bow dinette. Practical seamanship is assured with a foot switch for the anchor capstan, an additional chain length of 27.5 m serving two anchors, a powerful searchlight, and four underwater lights that bathe the hull in evening radiance. In the cockpit, two teak-topped tables with stainless steel frames rise and lower at the touch of a button, complemented by four Summit chairs for flexible, elegant seating.

Every cabin benefits from thoughtfully tailored enhancements. Additional bookshelves in the owner's cabin, crafted in wood with a mirrored back and metal antiroll, pair with antiroll details in every cabin, wrapped in leather and stainless steel with stitching. Doors display a striking interplay of horizontal and vertical wood grain, while Foresti and Suardi handles in brown leather and chrome add a bespoke finishing touch. Nightstands in all cabins feature a wood lower section and white leather upper with a hidden socket. A lift system serves the beds in the VIP and owner's cabins, and the owner's suite is elevated by a suede white leather wall with a stainless steel frame above the headboard, a magazine rack in suede white and plain white leather with stitching, and a towel heater. Technology integrates seamlessly with a Samsung 55-inch LED TV in the owner's cabin, Apple TV in the owner's cabin, TV cabinets in the guest cabins, a Stopsol mirror concealing the TV in the owner's cabin, and a Stopsol mirror hiding the TV in the VIP cabin with a wood frame. Two sliding beds in the guest cabins increase layout flexibility, custom modifications refine each cabin, six decorative lamps illuminate the owner's, guest, and VIP cabins, and strip LED lights glow beneath beds and bedside tables in the VIP and owner's cabins. Two electric Roman shades in the owner's cabin and three electric roller blackout curtains serving the owner's and VIP cabins complete the privacy and lighting suite. Headshowers are fitted in all

bathrooms, with exquisite Silk Georgette marble walls gracing the day head, the VIP shower, and the owner's shower.

Robust systems and professional-grade equipment underpin quiet confidence at sea. A 150-liter boiler and an 180-liter-per-hour watermaker secure onboard self-sufficiency, while a hydraulic stern thruster sharpens low-speed control. Deck work is simplified with a foot switch for the stern warping head including a reverse option. Power is abundant thanks to an upgraded second 25 kW generator, and comfort at anchor or underway is assured by zero-speed electric fin stabilizers from CMC.

The audiovisual and navigation suite is curated for cinematic clarity and dependable performance. The Audio Video Diamond Package, with its included TV, teams with an uninterruptible power supply dedicated to the audio-video system and Apple TV in both the salon and the owner's cabin. The Raymarine Gold Package delivers advanced helm intelligence, while predisposition for two CCTV cameras—one in the engine room and one on the cockpit ceiling, centre aft—enhances situational awareness. A Seatel ST24 satellite antenna and a Seatel ST24 empty radome crown the superstructure.

Finally, exterior and interior accents harmonize the yacht's design language: a TV cabinet on the flybridge with teak doors and white Corian Glacier sides and top, a teak floor on the flybridge and at the bow dinette, sun awnings for the bow and flybridge stern areas, and four curated artworks aboard. Teak, leather, metal, and stone converse throughout the yacht with an artisan's precision, ensuring these upgraded options deliver both enduring beauty and effortless functionality.

## Disclaimer

---

All particulars of this vessel are presented in good faith; however, neither the accuracy of the information nor the condition of the vessel is guaranteed or warranted. Prospective buyers should instruct their agents or qualified

surveyors to verify any details they wish to have validated. This vessel is offered subject to prior sale, price change, or withdrawal from the market without notice.

# CONTACTS

---

Shestakov Yacht Sales is a brokerage company specializing in the sale and service of yachts worldwide. The company offers services for buying and selling both new and used motor yachts, sailing vessels, and luxury superyachts. They also provide yacht registration, insurance, technical maintenance, crew selection, and charter organization services across the U.S., Canada, Latin America, the Caribbean, and the Bahamas.

The founder and lead broker of the company is Andrey Shestakov, a licensed and certified expert with extensive experience in marine engineering and shipbuilding.

The company has an extensive network of partnerships with major yacht manufacturers worldwide and provides services in multiple languages, including Russian, Ukrainian, Spanish, and English. The office is in Dania Beach, Florida, USA.

For more information and to view available yachts, you can visit the company's official website: <https://shestakovyachtsales.com>

## Contact details

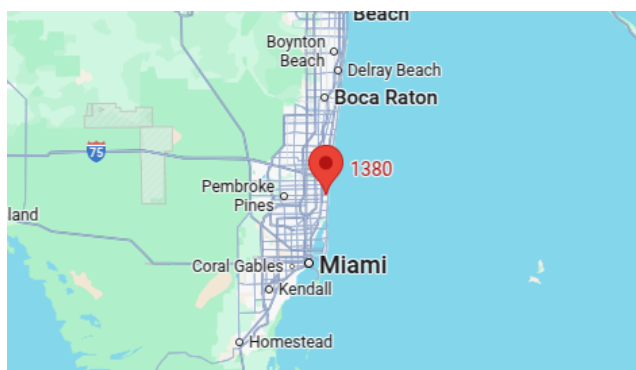
---

**Phone:** +1(954)274-4435

**Email:** [andrey@shestakovyachtsales.com](mailto:andrey@shestakovyachtsales.com)

## Address

---



1380 Weeping Willow Way, Hollywood,  
Florida 33019