

SANLORENZO SL88 - SANLORENZO



Builder: [Sanlorenzo](#)

LOA: 87' 0" (26.70 m)

Year Built: 2000

Beam: 20' 0" (6.20 m)

Model: SL88

Cruising Speed: 26 Knots (29.92 MPH)

Price: \$1,614,583.33 USD Subject to change.

[See full listing on our website](#)

Location: Illes Balears, Spain

Max Speed: 30 Knots (34.52 MPH)

TABLE OF CONTENTS

OVERVIEW	3
SPECIFICATIONS	5
Basic Information	5
Dimensions	5
Speed, Capacities and Weight	5
Accommodations	5
Hull and Deck Information	6
Engine Information	6
GALLERY	7
DETAILED DESCRIPTION	14
CONTACTS	15

OVERVIEW

SANLORENZO SL88 — MAJOR REFIT | NEW SEAKEEPER | NEW INTERIOR | TURN-KEY

A classic Italian flybridge motor yacht reborn, this Sanlorenzo SL88 has emerged from an extensive refit as a turnkey expression of refined yachting. The renewal encompasses a newly curated interior with upgraded systems, the installation of a Seakeeper stabilizer for markedly improved steadiness, freshly laid teak decks and a hydraulic swim platform, all blending graceful style with contemporary reliability.

Measuring 26.75 m with a beam of 6.76 m, the SL88 carries the presence of a larger vessel while maintaining elegant proportions. Her GRP planing hull gives spirited performance and an engaging ride, whether employed as a Mediterranean cruiser, a sporty day-boat or a performance-oriented superyacht. The layout flows naturally between salon, dining and generous exterior lounging areas, creating an inviting sequence for entertaining or relaxed cruising in classic Italian fashion.

Accommodation is arranged for up to 9 guests in 4 well-proportioned cabins, comprising a full-beam master suite, a tranquil VIP and two twin cabins, one of which features a Pullman berth. Separate crew quarters for up to 4 ensure discreet service and privacy for owners and guests. The refreshed décor is composed of contemporary textures, refined finishes and careful detailing that lift the onboard ambiance while respecting the yacht's original character.

Twin MTU 12V 2000 M90 engines supply the vessel's propulsion, yielding a steady cruising speed of approximately 24 knots and a top speed of about 32 knots, backed by dependable power delivery. Stability both underway and at anchor is significantly enhanced by the newly fitted Seakeeper, reducing roll and improving comfort in a variety of sea conditions. With a draft of 1.90 m and a fuel capacity of 10,500 L, she is well suited for island-hopping and

extended coastal passages.

Built by Sanlorenzo and offered as an SL88 from the year 2000, this GRP-hulled motor yacht has been thoughtfully modernized to current tastes and technologies. New teak decking and the hydraulic swim platform accentuate her alfresco lifestyle, making water access effortless and days aboard supremely enjoyable. Presented turnkey after the major refit, she is a rare opportunity to own a comprehensively updated Sanlorenzo with modern stabilization and a refreshed interior. Viewings are highly recommended.

SPECIFICATIONS

Basic Information

Category:
Motor yachts

Year Built:
2000

Model Year:
2000

Country:
Spain

Dimensions

LOA:
87' 0" (26.70 m)

Beam:
20' 0" (6.20 m)

Speed, Capacities and Weight

Cruise Speed:
26 Knots (29.92 MPH)

Max Speed:
30 Knots (34.52 MPH)

Accommodations

Sleeps:
8

Crew Cabin:
2

Total Heads:
4

Crew Berths:
4

Hull and Deck Information

Hull Material:

Fiberglass and Plastic Yachts

Hull Designer:

Sanlorenzo

Deck Material:

GRP

Interior Designer:

Sanlorenzo

Hull Configuration:

Semi-Displacement

Engine Information

Engines:

2

Engine Type:

Inboard

Manufacturer:

MTU

Fuel Type:

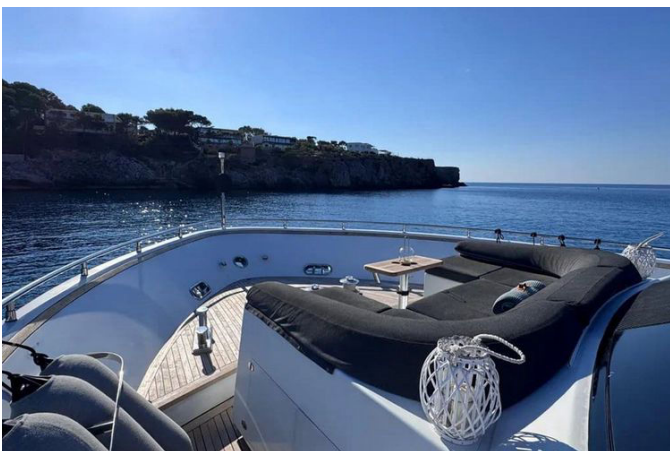
Diesel

GALLERY



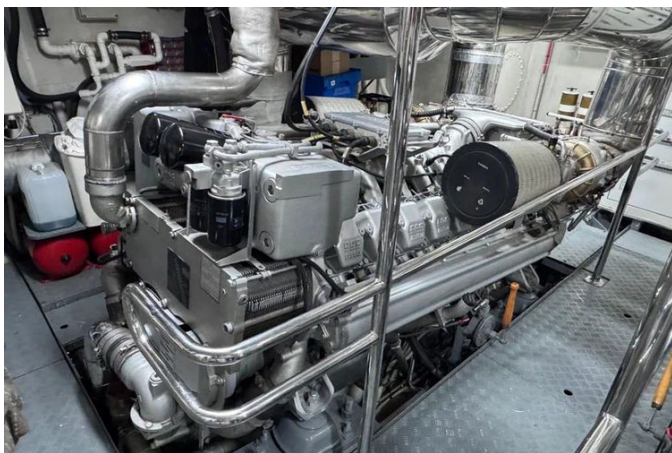
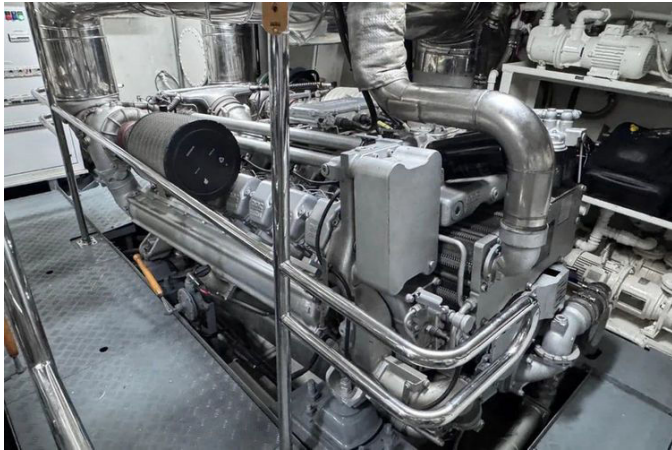












DETAILED DESCRIPTION

Features

Fresh from a major recent refit that introduces new interior finishes and upgraded systems throughout, this Sanlorenzo offers a new Seakeeper stabilizer for remarkable comfort both underway and at anchor. Newly laid teak decks flow aft to a hydraulic swim platform that streamlines water access and tender operations, while the yacht's turn-key condition means she is impeccably prepared for the season. Propulsion is provided by two MTU 12V 2000 M90 engines, supported by a fuel capacity of 10,500 L to extend your cruising horizons with confidence.

CONTACTS

Shestakov Yacht Sales is a brokerage company specializing in the sale and service of yachts worldwide. The company offers services for buying and selling both new and used motor yachts, sailing vessels, and luxury superyachts. They also provide yacht registration, insurance, technical maintenance, crew selection, and charter organization services across the U.S., Canada, Latin America, the Caribbean, and the Bahamas.

The founder and lead broker of the company is Andrey Shestakov, a licensed and certified expert with extensive experience in marine engineering and shipbuilding.

The company has an extensive network of partnerships with major yacht manufacturers worldwide and provides services in multiple languages, including Russian, Ukrainian, Spanish, and English. The office is in Dania Beach, Florida, USA.

For more information and to view available yachts, you can visit the company's official website: <https://shestakovyachtsales.com>

Contact details

Phone: +1(954)274-4435

Email: andrey@shestakovyachtsales.com

Address



1380 Weeping Willow Way, Hollywood,
Florida 33019