

PIER PRESSURE - AZIMUT YACHTS



Builder: [Azimut Yachts](#)

Beam: 21' 0" (6.58 m)

Year Built: 2020

Min Draft: 15' 7" (4.75 m)

Model: Grande 27M

Max Draft: 20' 9" (6.33 m)

Price: \$4,950,000 USD Subject to change.

Cruising Speed: 24 Knots (27.62 MPH)

[See full listing on our website](#)

Location: Fort Lauderdale, United States

LOA: 87' 0" (26.77 m)

TABLE OF CONTENTS

OVERVIEW	3
SPECIFICATIONS	4
Basic Information	4
Dimensions	4
Speed, Capacities and Weight	4
Accommodations	5
Hull and Deck Information	5
Engine Information	5
GALLERY	6
DETAILED DESCRIPTION	19
CONTACTS	21

OVERVIEW

“PIER PRESSURE” has escorted her owner and family with effortless elegance between the Bahamas and Florida, a 27M luxury motor yacht that presents a spacious five-stateroom, five-ensuite arrangement crowned by an on-deck master suite that commands both privacy and light.

Below decks, thoughtfully arranged crew accommodations for three to four deliver unobtrusive, professional service, while the propulsion package of twin MAN 1900s together with dual generators confers assured power and the range to undertake extended passages. Exceptionally adaptable for an intimate family retreat or a refined charter operation, this superyacht welcomes larger parties with the relaxed conviviality and practicality of a true flybridge yacht. The owner has refreshed the interior décor and equipped the tender garage with a handsome tender for carefree days afloat; currently lying in Nassau, Bahamas at Yacht Haven Marina, she is offered for private viewings by appointment.

SPECIFICATIONS

Basic Information

Category:
Motor yachts

Year Built:
2020

Sub category:
Motor Yacht

Country:
United States

Model Year:
2020

Dimensions

LOA:
87' 0" (26.77 m)

Beam:
21' 0" (6.58 m)

Min Draft:
15' 7" (4.75 m)

Max Draft:
20' 9" (6.33 m)

Speed, Capacities and Weight

Cruise Speed:
24 Knots (27.62 MPH)

Fuel Capacity:
2509.6 Gallons

Water Capacity:
528.3 Gallons

Accommodations

Sleeps:

8

Crew Berths:

3

Total Heads:

5

Hull and Deck Information

Hull Material:

Fiberglass and Plastic Yachts

Hull Designer:

N/A

Deck Material:

Fiberglass

Interior Designer:

Achille Salvagni

Hull Configuration:

Deep Vee

Engine Information

Engines:

2

Engine Type:

Inboard

Manufacturer:

MAN

Fuel Type:

Diesel

GALLERY











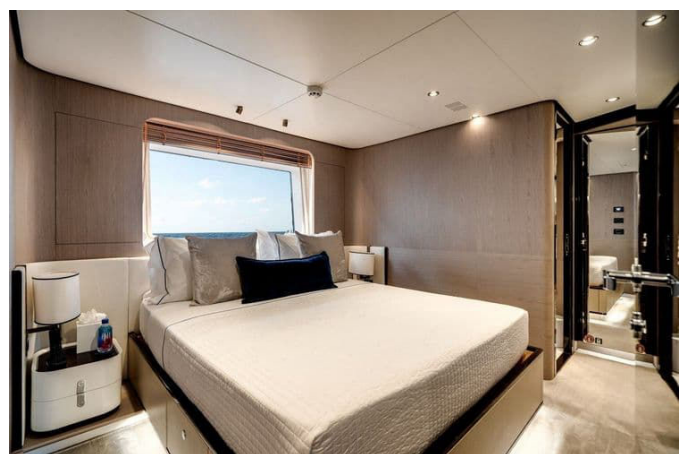
















DETAILED DESCRIPTION

Features

Specified without compromise, this yacht marries intuitive helm control, professional navigation and indulgent amenities into a single, confidence instilling vessel. At the command station the SIMRAD Platinum Package integrates with SIMRAD AIS and a SIMRAD fishfinder to deliver precise situational awareness, while a third station VHF with emergency power backup preserves resilient communications in every condition. Docking is effortless thanks to the Marex Joystick Easy Docking system and a dedicated cockpit docking station that provides joystick control for both stern and bow thrusters; fin stabilizers and a stern thruster refine handling underway and in tight marinas. Global cruising is simplified by the ASEA converter, and a shore electrical plug on the bow offers flexible connections wherever you roam. Comprehensive vision and lighting elevate confidence day and night: a nightvision camera M 625CS and four exterior Panasonic cameras complement spreader lights, bow anchoring lights and dimmable exterior lighting for cockpit and flybridge, while Ocean Lead Allure HD underwater lights plus additional underwater lighting along the cabins create a dramatic waterside glow. Entertainment is seamlessly integrated with an AV Custom MPI package, a hi lo TV system on the flybridge and a stainless steel ceiling pole for the cockpit TV, delivering salon and al fresco media with polished discretion. Architecture and shade solutions make open air living effortless: a hardtop and flybridge hatch crown the elevated deck while a bow electric bimini top, a removable bow sunshade with removable poles, an aft fly electric awning and a cockpit electric shade adapt instantly to the sun. A painted floating line highlights the hull's profile, and a higher pulpit, a harness track on the wide body bow area, midship extra cleats and a flag pole

underscore considered detailing; practical service points include a shore water plug on the bow. Tender operations are streamlined by a garage with swim platform, an in garage tender hauling and launching mechanism and a dedicated garage closing awning, turning every anchorage into a private harbor. The deck is richly appointed for entertaining and relaxation: teak on the flybridge with a teak stool for the exterior fly, two Talenti side tables, an extension sofa and three sunbeds on the flybridge, and aft fly furniture with a BBQ set the scene for alfresco dining; forward, a teak table and teak in the bow sunbathing area invite long, lazy afternoons. Exterior conveniences include a cockpit refrigerator, an icemaker on the flybridge bar, a winecooler and black lava stone tops on all exterior tables. Inside, a five cabin layout — including an aft portside cabin with a double bed — welcomes family and guests with quiet luxury: spring mattresses in all cabins, including crew quarters, and an extra size master bed ensure restorative rest, while a safebox in the master cabin and a blackout system for lower deck curtains provide discretion and privacy. The salon is appointed with a coffee table and a three seat sofa by Poliform, the helm features an electrically operated pilot seat, and the master suite includes a desk vanity with stool; warm wooden floors flow through the dining area, helm station, lobby and foyer, and bed linen and towels are supplied by Yachtique. Every head is finished in marble — master, VIP, guest and day heads — bringing a boutique hotel sensibility to life at sea. The galley and service spaces are comprehensively equipped with a Miele appliance package, two refrigerators in the galley and a microwave oven in the pantry, while a microwave in the crew quarters keeps long passages effortless. Safety and readiness remain paramount with smoke detectors in cabins, a SOLAS liferaft for eight people and a spare set of zinc anodes, and extra conduits are installed to future proof the yacht's systems for added upgrades.

CONTACTS

Shestakov Yacht Sales is a brokerage company specializing in the sale and service of yachts worldwide. The company offers services for buying and selling both new and used motor yachts, sailing vessels, and luxury superyachts. They also provide yacht registration, insurance, technical maintenance, crew selection, and charter organization services across the U.S., Canada, Latin America, the Caribbean, and the Bahamas.

The founder and lead broker of the company is Andrey Shestakov, a licensed and certified expert with extensive experience in marine engineering and shipbuilding.

The company has an extensive network of partnerships with major yacht manufacturers worldwide and provides services in multiple languages, including Russian, Ukrainian, Spanish, and English. The office is in Dania Beach, Florida, USA.

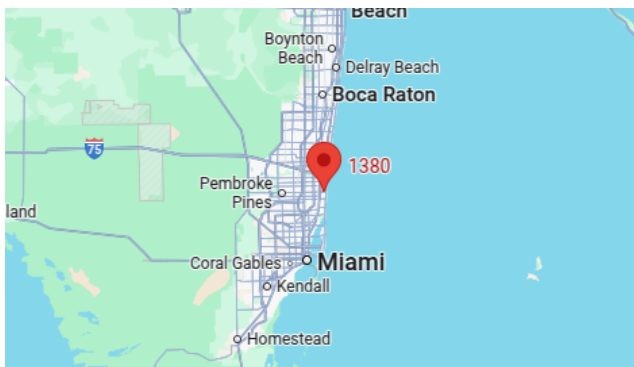
For more information and to view available yachts, you can visit the company's official website: <https://shestakovyachtsales.com>

Contact details

Phone: +1(954)274-4435

Email: andrey@shestakovyachtsales.com

Address



1380 Weeping Willow Way, Hollywood,
Florida 33019