

LADY HELEN - BROWARD YACHT



Builder: [Broward Yacht](#)

LOA: 87' 0" (26.52 m)

Year Built: 1982

Beam: 20' 0" (6.10 m)

Model: 87

Max Draft: 19' 8" (6 m)

Price: \$640,000 USD Subject to change.

Cruising Speed: 11 Knots (12.66 MPH)

[See full listing on our website](#)

Location: Fort Lauderdale, United States

Max Speed: 13 Knots (14.96 MPH)

TABLE OF CONTENTS

OVERVIEW 3

SPECIFICATIONS 4

 Basic Information 4

 Dimensions 4

 Speed, Capacities and Weight 4

 Accommodations 5

 Hull and Deck Information 5

 Engine Information 5

GALLERY 6

DETAILED DESCRIPTION 17

CONTACTS 23

OVERVIEW

Lady Helen is a meticulously maintained motor yacht, treasured by only two owners across the past 27 years, and recently enhanced with over \$400,000 in upgrades, including a repaint from the waterline up completed within the last year. She features four generously proportioned staterooms and a sweeping flybridge—true flybridge motor yacht styling—boasting a full wet bar, a Lynx grill, and seating for ten gathered around a dining table. A full-beam master suite anchors the living spaces, joined by three guest suites each with ensuite baths, while forward crew quarters provide two twin berths, one full-size berth, and a complete head with shower, perfectly suited to luxury cruising and bluewater adventures.

SPECIFICATIONS

Basic Information

Category:
Motor yachts

Year Built:
1982

Sub category:
Motor Yacht

Country:
United States

Model Year:
1982

Dimensions

LOA:
87' 0" (26.52 m)

Max Draft:
19' 8" (6 m)

Beam:
20' 0" (6.10 m)

Speed, Capacities and Weight

Cruise Speed:
11 Knots (12.66 MPH)

Water Capacity:
1100 Gallons

Max Speed:
13 Knots (14.96 MPH)

Fuel Capacity:
5300 Gallons

Accommodations

Total Heads:

6

Hull and Deck Information

Hull Material:

Fiberglass and Plastic Yachts

Hull Designer:

N/A

Deck Material:

Fiberglass

Interior Designer:

N/A

Hull Configuration:

N/A

Engine Information

Engines:

2

Engine Type:

Inboard

Manufacturer:

Detroit Diesel

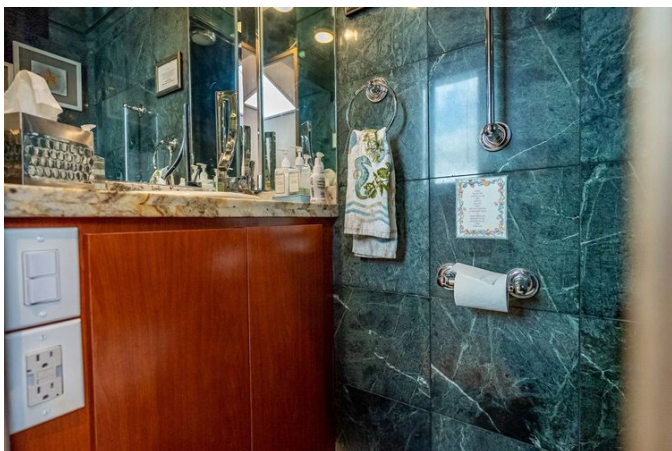
Fuel Type:

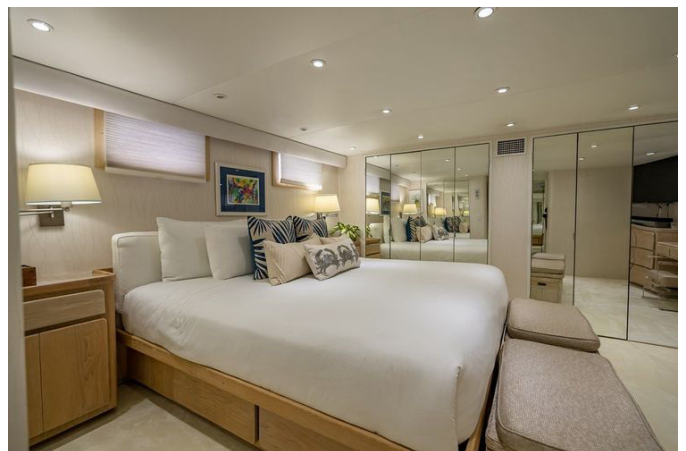
Diesel

GALLERY























DETAILED DESCRIPTION

Key features

A full-beam master stateroom crowns the accommodations, while a thoughtful four-stateroom layout includes a VIP suite with a truly private entrance for added discretion; above, the completely redesigned, expansive flybridge invites open-air living with a full wet bar appointed with three bar stools and a Lynx two-burner propane barbecue grill, and sociable seating for 12 gathered around two beautifully arranged dining tables, creating an unparalleled setting for entertaining and relaxation at sea.

Upgrades

Meticulous care shows in a continuous program of enhancements: June 2023 brought a new Wheelhouse Garmin 8617 chartplotter; May 2023 upgraded comfort with new carpeting throughout the master and guest staterooms, as well as new LED lighting on the flybridge and aft deck; February 2022 delivered a complete Awlgrip repaint by Luu Marine, new flybridge Eisenglass, two new flybridge Garmin 8617 chartplotters, two new Icom VHF radios, three new Technicold air handlers, and a new compact AC unit for the VIP stateroom; June 2022 saw the Naiad stabilization system serviced with new bearings and seals; March 2021 added new house and starting batteries, a new Technicold five ton chiller, a new Garmin GHC 20 autopilot, and a new Grand Boats 12'2" tender with a 30 hp Tohatsu outboard; April 2018 introduced a new KVH UHD 7 TracVision; and April 2017 refreshed the galley with new granite countertops, cumulatively reflecting an owner's program of thoughtful, documented improvements.

Salon

The salon stretches the full beam, creating an airy, open space where conversation flows as easily as the view; an aft starboard L shaped sofa pairs with two barrel chairs for generous seating, while the entertainment center with flat-screen TV is thoughtfully positioned to port, the dining area welcomes eight around an elegant glass table, and just forward a beautifully appointed wet bar elevates hospitality with an ice machine, wine cooler, and a granite-topped sink, all complemented by a KVH UHD7 satellite TV system with upgraded wiring new in 2018 and a Bose surround sound system to enrich the onboard atmosphere.

Galley

On deck, the generous country kitchen galley invites effortless gathering with expansive granite countertops, a double stainless-steel sink, and full-size appliances; forward, a comfortable settee seats six for casual meals and morning coffee, and culinary capability is comprehensive with granite worktops, an Electrolux five-burner cooktop with oven, a GE Profile microwave, a Whirlpool side by side refrigerator/freezer, a GE dishwasher, and a 120 VAC garbage disposal, combining residential functionality with yacht worthy durability.

Day head

Refined finishes elevate the day head with marble flooring and a rich granite countertop, while a decorative vanity showcases a custom sink with a stainless-steel faucet, and practicality is assured with a reliable Headhunter head to ensure comfort and function for guests.

Accommodations

Designed to host with grace, Lady Helen offers a four-stateroom layout for eight guests, arranged with one king bed, one full bed, and four twin beds; the master stateroom, accessed via a starboard mid salon stairway, spans the full beam and centers on a king-size bed flanked by large cedar-lined closets and nightstands, while to port a generous bank of drawers and a make up vanity provide elegant utility and the ensuite bath features a spacious glass-enclosed shower, forward two guest staterooms port and starboard each offer twin berths, a chest of drawers, cedar-lined closets, and their own ensuite baths with glass-enclosed showers, the VIP stateroom enjoys a private entrance below the aft deck and is notably large with a walk-in shower, private head, and sink, and forward the crew quarters reached by stairs from the galley include two single berths in the bow with a complete head and walk-in shower just aft to port, the captain's full-size bed lies further aft to port while to starboard the laundry pairs with additional refrigeration and freezer capacity.

Raised pilothouse - electronics

Just aft of the galley, the raised pilothouse welcomes easy access from both port and starboard, with a raised bench just behind the helm ensuring clear sightlines for guests underway; command is confident with a 2023 new Garmin GPSMAP 8617 chartplotter, a 2022 Raymarine AIS 950, a 2019 Garmin GHC 20 Reactor autopilot, Naiad 962 Multi sea 2 stabilization, a Furuno 48 mile radar, and an Icom VHF radio, all backed by a Phoenix backup battery charger/battery dedicated to the electronics for dependable redundancy.

Deck equipment

Boarding and handling are simplified with a Marquipt seven step boarding

ladder, a Maxwell 2020 windlass fed by 200' of 5/16" chain, a Nautical Structures 1500 davit, and a Delta 110 lb stainless steel anchor—robust gear chosen for reliability and ease of operation in every anchoring and tender handling scenario.

Flybridge

Lady Helen's expansive flybridge lives large beneath a custom fiberglass hardtop with radar arch, accessible via a gracious spiral staircase from the aft deck or stairs up from the wheelhouse; the forward helm features twin helm chairs, with dining for ten just aft and to port, and a full wet bar to starboard, while the tender and Nautical Structures hydraulic davit are positioned aft for balance and ease, and notable upgrades include new Eisenglass in 2022, a 2022 Grand 12' 2" tender with a 30 hp Tohatsu engine, two new 2022 Garmin GPSMAP 8617 chartplotters, a 2022 Garmin Phantom GMR124 radar, a 2022 Garmin GPS UHD60 chartplotter, two 2022 Icom VHF radios, and a 2021 complete rebuild of the Nautical Structures 1500 davit, with entertaining made effortless by a 2020 Lynx two burner stainless steel grill, a full wet bar with ice machine, refrigerator, sink, abundant storage, and a powerful Fusion eight speaker stereo system.

Aft deck/swim platform

Board via port or starboard boarding gates to discover beautiful teak decks and a custom high gloss rectangular teak table with brass inlay seating six in style; a conveniently placed wet bar just forward includes a refrigerator and TV, while the swim platform features removable stainless steel hoop rails and a custom cleaning locker, and overhead a custom canopy with updated lighting and two stereo speakers sets the mood for sunset dinners and relaxed passages.

Mechanical equipment

Power comes from twin Detroit Diesel 8V92 engines rated at 600 HP each with 5,500hrs, breathing through a Delta T ventilation system and turning via rugged Allison transmissions, while climate control is robust with two Technicold five ton chilled water A/C systems and three Technicold air handlers supporting quiet, efficient cooling; maneuverability and motion comfort are assured by a Wesmar hydraulic bow thruster and a Naiad 962 stabilizer system, fuel management is comprehensive with two double Racor fuel filters for the mains with vacuum gauges, a 110 V fuel transfer pump, and a Reverso lube oil transfer pump/manifold, bilge and fresh water systems are equally well specified with two AC 220 V bilge pumps, two DC Rule bilge pumps, and two Grundfos 110 V freshwater pumps, and safety in the machinery spaces is enhanced by a Fireboy halon auto shutdown system for engines, generators, ventilators, and blowers, complemented by a 36 gallon electric hot water heater and a Kidde dry chemical extinguisher.

AC/electrical equipment

The yacht's electrical backbone is engineered for reliability with system voltage at 120/240 VAC, 60 Hz; shore power arrives via two 100 amp Hubbell plugs feeding two transformers/boosters, while ship's power is provided by a Kohler 32 kW generator with 4966hr and an Onan 29 kW generator with 2100hr, and charging is modern and efficient with two Victron Centaur 12 V battery chargers new in 2022 and a Victron Phoenix 24 V battery charger new in 2022, ensuring consistent electrical reserve and flexibility for extended cruising.

Sanitation system

Reliable and guest friendly, the system features Headhunter blackwater

gauges, six electric flush heads using fresh water on 12 VDC, and a blackwater tank capacity of 400 gallons for extended cruising independence, all specified to support comfortable, autonomous operation underway.

Safety equipment

Prepared for bluewater confidence, the yacht carries two Revere Elite six man life rafts new in 2018, 15 adult PFDs, and 11 portable fire extinguishers; signaling and emergency gear include an ACR Epirb 406 MHz, a complete current flare kit, one electric horn with triple trumpets, and an Icom loud hailer, and readiness extends to the water with a 12' Grand tender powered by a 30 hp Tohatsu engine.

Disclaimer

The Company offers the details of this vessel in good faith but cannot guarantee or warrant the accuracy of this information nor warrant the condition of the vessel; a buyer should instruct his agents, or his surveyors, to investigate such details as the buyer desires validated, and this vessel is offered subject to prior sale, price change, or withdrawal without notice.

CONTACTS

Shestakov Yacht Sales is a brokerage company specializing in the sale and service of yachts worldwide. The company offers services for buying and selling both new and used motor yachts, sailing vessels, and luxury superyachts. They also provide yacht registration, insurance, technical maintenance, crew selection, and charter organization services across the U.S., Canada, Latin America, the Caribbean, and the Bahamas.

The founder and lead broker of the company is Andrey Shestakov, a licensed and certified expert with extensive experience in marine engineering and shipbuilding.

The company has an extensive network of partnerships with major yacht manufacturers worldwide and provides services in multiple languages, including Russian, Ukrainian, Spanish, and English. The office is in Dania Beach, Florida, USA.

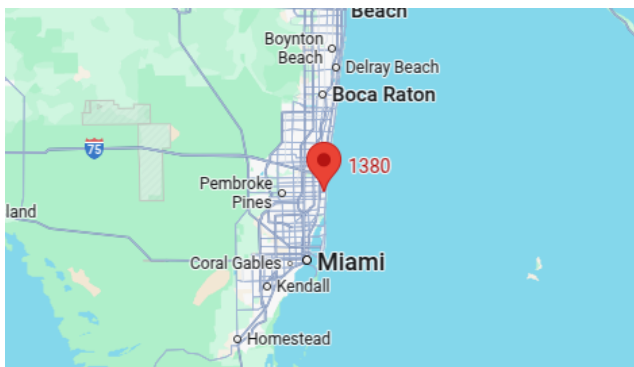
For more information and to view available yachts, you can visit the company's official website: <https://shestakovyachtsales.com>

Contact details

Phone: +1(954)274-4435

Email: andrey@shestakovyachtsales.com

Address



1380 Weeping Willow Way, Hollywood,
Florida 33019