

SHEPSL X - BURGER BOAT COMPANY



Builder: [BURGER BOAT COMPANY](#)

LOA: 87' 0" (26.52 m)

Year Built: 1986

Beam: 19' 0" (5.79 m)

Model: Flushdeck with Flybridge

Min Draft: 17' 6" (5.33 m)

Price: \$949,000 USD Subject to change.

Max Draft: 18' 1" (5.50 m)

[See full listing on our website](#)

Location: Fort Lauderdale, United States

Cruising Speed: 19 Knots (21.86 MPH)

Max Speed: 22 Knots (25.32 MPH)

TABLE OF CONTENTS

| | |
|------------------------------------|-----------|
| OVERVIEW | 3 |
| SPECIFICATIONS | 4 |
| Basic Information | 4 |
| Dimensions | 4 |
| Speed, Capacities and Weight | 4 |
| Accommodations | 5 |
| Hull and Deck Information | 5 |
| Engine Information | 5 |
| GALLERY | 6 |
| DETAILED DESCRIPTION | 21 |
| CONTACTS | 35 |

OVERVIEW

Now offered at a reduced price of \$1,195,000.

Originally launched at 81', she was lengthened by 6' in 1992, a thoughtful modification that produced the much-desired semi-enclosed aft deck, an expansive boat deck, and substantially increased lazarette stowage.

SHEPSL X delivers a 1,000-nautical-mile range at 11 knots (1450 rpm) while consuming only 38 gph total, marrying efficient long-distance capability with economical operation.

Treasure to a succession of discerning owners, the current custodian has preserved that legacy with meticulous care and targeted upgrades; Burger Yachts records him as the only Burger owner to have simultaneously owned three significant Burgers—75', 87', and 118'.

Proudly embodying pedigree American craftsmanship, this classic motor yacht presents notable highlights throughout and is inspection-ready—an elegant long-range cruiser and a premier yacht-for-sale in the motor yacht, classic yacht, and luxury yacht categories.

SPECIFICATIONS

Basic Information

Category:
Motor yachts

Year Built:
1986

Model Year:
1986

Country:
United States

Dimensions

LOA:
87' 0" (26.52 m)

Beam:
19' 0" (5.79 m)

Min Draft:
17' 6" (5.33 m)

Max Draft:
18' 1" (5.50 m)

Speed, Capacities and Weight

Cruise Speed:
19 Knots (21.86 MPH)

Water Capacity:
1350 Gallons

Max Speed:
22 Knots (25.32 MPH)

Fuel Capacity:
3830 Gallons

Gross Tonnage:
106 Pounds

Accommodations

Total Heads:

5

Crew Cabin:

2

Hull and Deck Information

Hull Material:

Aluminum Yachts

Hull Designer:

Hargrave

Deck Material:

Aluminum

Interior Designer:

N/A

Hull Configuration:

Semi-Displacement

Engine Information

Engines:

2

Engine Type:

Inboard

Manufacturer:

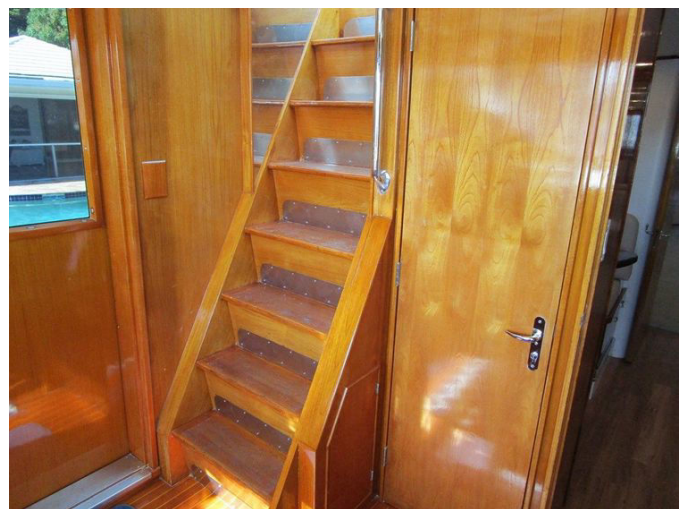
Detroit Diesel

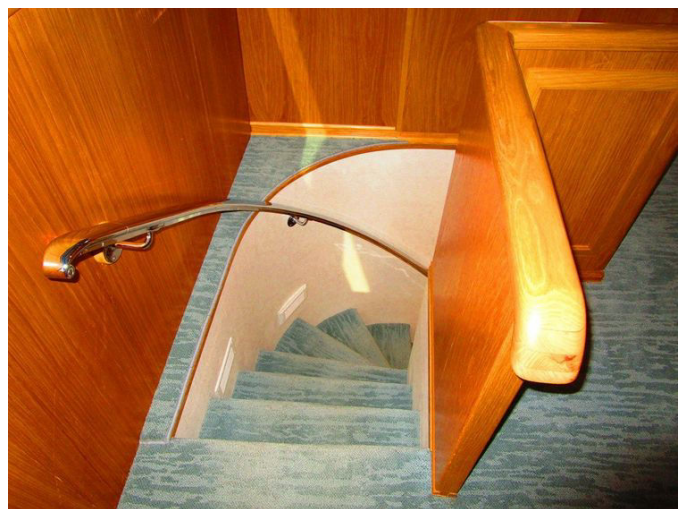
Fuel Type:

Diesel

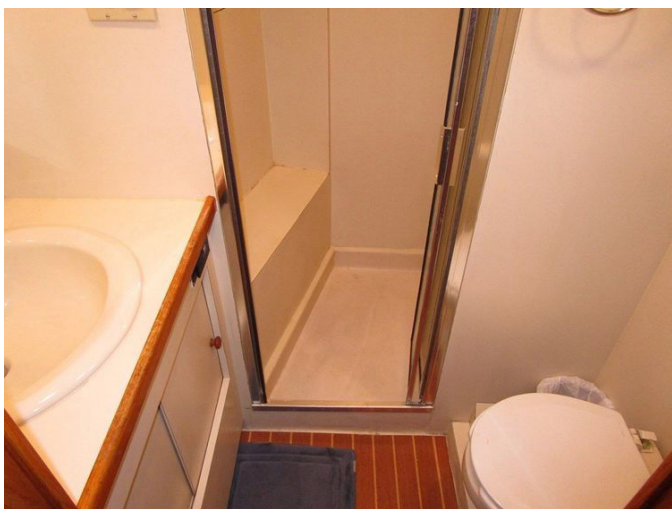
GALLERY

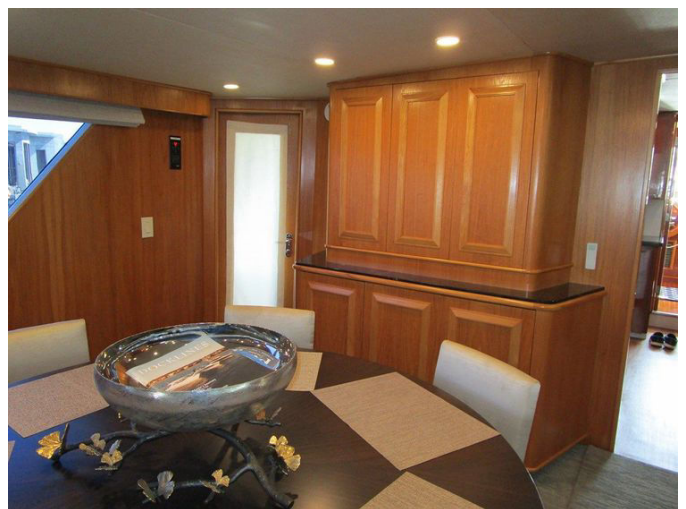


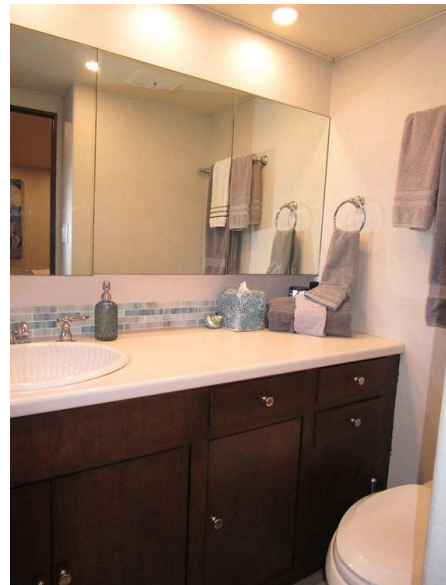


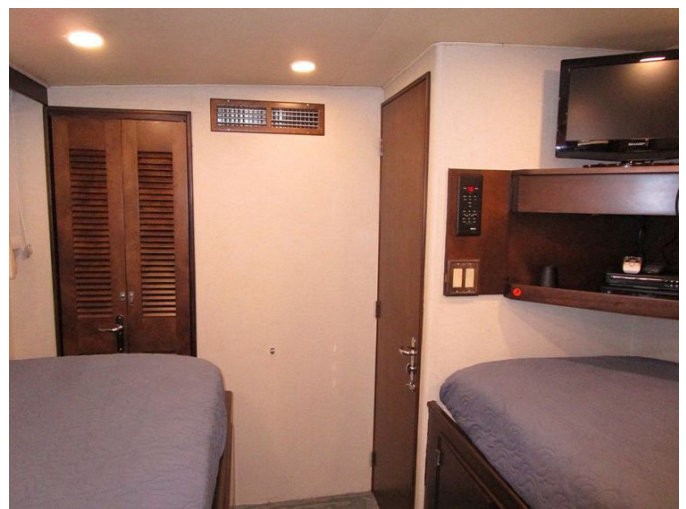
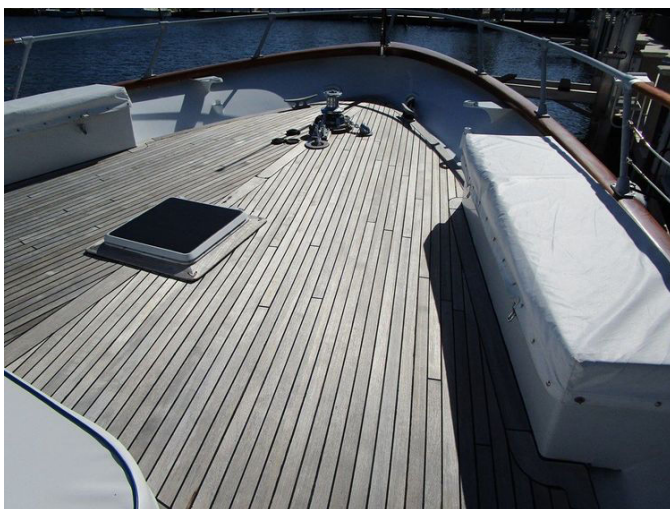


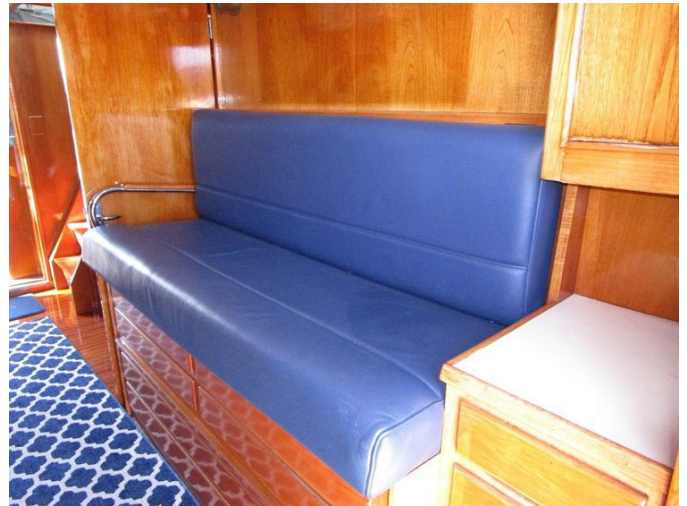




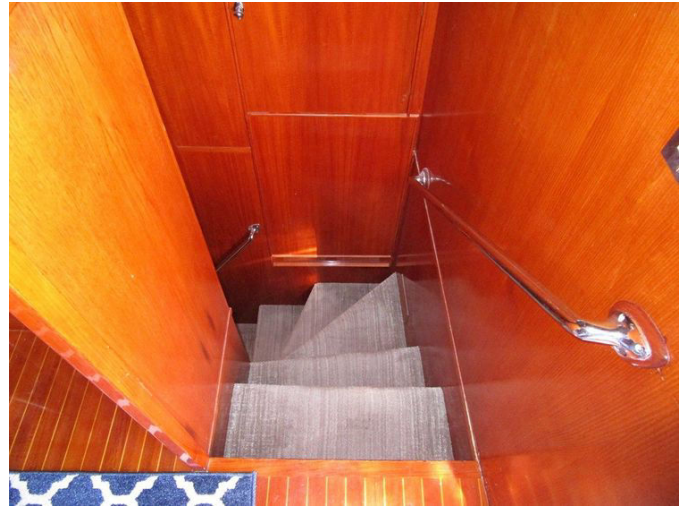


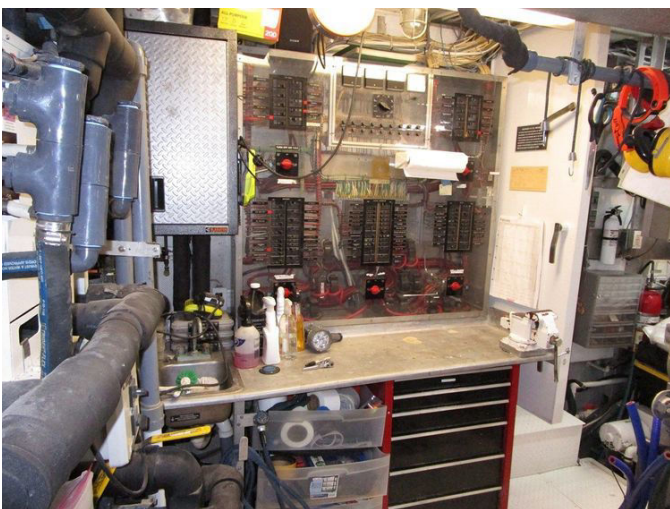


















DETAILED DESCRIPTION

Walkthrough

Entered via the port or starboard midship rail breaks, the side decks invite you forward to the Pilothouse or aft to the Salon and Dining area in a natural, flowing circulation. Stepping into the Pilothouse, you are immediately struck by its generous volume, the full main helm and a three person bench seat, with a staircase leading up to the Flybridge. Forward, a companionway takes you down to the engine room and crew area: to port, a double berth ensuite Captain's cabin, and all the way forward, a two bunk ensuite Crew cabin, with a separate washer and dryer neatly integrated nearby. Aft from the Pilothouse, a large, bright Galley accompanies a cozy, two person dinette to starboard, before you arrive at the full beam Salon where a Day Head and a six place round dining table set the tone for gracious entertaining. A marble topped curved banquette to port artfully defines the Dining area from the Salon. In the Salon itself, to port, a huge off white upholstered couch pairs with a coffee table and two swivel barrel chairs, while a 70" TV faces the seating; to starboard, a staircase leads down to the three guest cabins. Aft, through sliding doors, the large enclosed Aft Deck presents built in seating and three teak chairs around an oval table, a 55" LG TV, and access to the original lazarette. Below decks, the king size Master suite lies aft and enjoys separate His and Hers Heads, the port side featuring a shower and the starboard side a Jacuzzi tub. Forward to port is the VIP with an athwartships berth and a head with a second Jacuzzi tub, while to starboard a twin lower berth ensuite cabin boasts a stall shower.

Pilothouse

Entered from port or starboard sliding doors, the Pilothouse impresses with

over four feet of space between the helm wheel and the aft bench, making watchkeeping and passage planning effortless. Beneath the three person leather helm seat are four drawers plus two full size chart drawers, with an outboard cabinet adding four more drawers and an upper locker. Forward to port, outboard of the centerline helm, four ventilated storage cabinets, two drawers and an elegant cutout house the yacht's printer/scanner. The sole gleams in varnished teak and holly, while steps aft rise to the Flybridge and a slim storage locker, and steps forward to starboard descend to the engine room and crew cabins.

Pilothouse equipment

Command comes naturally at a varnished 32" ship's wheel with a stainless steel outer ring, complemented by a Simrad AP70 autopilot new in 2023 and two Detroit Diesel DDEC electronic displays feeding Detroit Diesel electronic engine controls and Detroit Diesel station active controls. Two 12" monitors display Garmin radar, chart and camera imagery, assisted by two Furuno RD30 data displays and two Garmin remote control panels with joysticks. Precision handling is assured by Naiad bow thruster and stabilizer controls with a Naiad dual pressure gauge, while wiper/washer controls and a Garmin card reader enhance functionality. A Ritchie 5" magnetic compass, a Garmin VHF, a Wema seven position tank level indicator, and a Rule high water alarm system keep you informed. At night, two red overhead navigation lights preserve your night vision.

Galley

Just aft and one and a half steps down from the Pilothouse, the full beam Galley blends function and finesse with planked vinyl sole, stainless steel appliances, high gloss varnished cabinetry, and marble countertops that feel

decidedly current. To starboard, a two person L shaped settee with a matching marble tabletop creates a casual nook facing a 24" Insignia TV, with practical storage beneath the settee.

Galley equipment

Catering is effortless with a GE side by side stainless steel refrigerator with freezer below, a dual basin undermount stainless steel sink, a Bosch four burner ceramic touch control cooktop, a full size stainless steel Bosch wall oven, and a Bosch stainless steel convection/microwave oven with an exhaust hood featuring variable speed fan and lights. An InSinkErator garbage disposal, removable spray faucet and marble countertop pair with a Bosch stainless steel dishwasher, while eleven varnished cabinet doors and eleven varnished drawers provide abundant stowage. Side windows with shades, thirteen overhead LED lights, privacy doors fore and aft, and digital A/C controls complete this refined workspace.

Dining salon

Open to the Salon aft, the Dining Salon presents a round six place table with upholstered chairs to port. Forward to port, built in raised panel cabinetry—three above and three below a marble shelf with interior drawers—beautifully organizes the yacht's glassware and dinnerware, while the glass framed side deck entry door sits outboard with Emperador dark marble tiles just inside. Aft of the dining table, a curved cabinet with four raised panel doors adds storage; its thoughtfully low marble top preserves the visual flow. To starboard, cabinetry mirroring that to port cleverly conceals the yacht's Day Head behind a curved doorway, where a Headhunter toilet, vanity with sink and storage, and decorative tile surrounding a two sided mirror make the space feel larger. The Emperador dark marble sole continues to the

starboard entry door with its large glazed pane. Next aft is a marble topped two door storage cabinet with two interior drawers, followed by curved stairs to the accommodations seamlessly framed in raised panel joinery. Two house side windows per side with Roman shades, two digital A/C controls, a carpeted sole, fourteen overhead LED lights, and a vinyl overhead finish the space with comfort and polish.

Salon

Flowing from the dining area to create a single expansive vista, the Salon to port features a six cushion C shaped upholstered sofa with storage beneath and two round coffee tables in front. Centerline, two panel sliding glass doors open to the aft deck. To starboard, two upholstered swivel chairs with matching footstools flank a round glass coffee table, while outboard the entertainment center—matched to the dining joinery—houses a Sony audio/video receiver, the aft deck DirectTV receiver, and the Salon DirectTV DVR in the forward cabinets. Above, a 70" Samsung Smart TV presides over two storage cabinets, with two more aft hosting the Salon A/C air handler; the entire ensemble wears a marble top that harmonizes with the rest of the area. The Salon also offers a continuous carpeted sole, digital A/C controls, sixteen overhead LED lights, and a five channel overhead stereo system. Two fixed windows per side bathe the space in light and can be shaded with Roman blinds, while twenty LED light fixtures nest in the vinyl overhead.

Aft deck

Full beam and fully enclosed with hard side sliding windows and a five panel aft curtain with removable sunshade, the aft deck serves as a second salon. Built in seating with removable cushions spans the transom, set around a high gloss oval dining table on a large stainless steel pedestal and

complemented by three teak chairs arranged forward. With the hull extension, the aft deck stretches 13'6" front to back. Thoughtful amenities include a vinyl overhead with twelve overhead LED lights, port and starboard upper and lower storage cabinets, a 55" LG TV, a wine cooler, double port and starboard clear digital A/C controls, an accent carpet, a starboard teak and holly sole section, a starboard access door to the swim platform, double sliding glass doors to the salon, and a washdown spigot with hose.

Accommodation foyer

Nine gently curved carpeted steps descend from the Salon to a gracious Accommodation Foyer featuring an Emperador marble tile sole, with doors aft to the Master suite and forward to the two Guest suites. Here you will also find a two door stewardess locker for supplies and a central vacuum outlet, discreetly positioned for service.

Master cabin

Entered at the forward end, the Master centers on a king size berth on the centerline, with four drawers tucked below the mattress and soft rope lighting at the toe kick. The full aft bulkhead is elegantly upholstered as a headboard, and four drawer nightstands on each side sit beneath matching sconces. A 43" Samsung Smart TV graces the forward bulkhead. To port, a two door, auto lit, cedar lined hanging locker precedes a nine drawer chest topped with glass, with two large opening portholes, drapes and a blackout curtain above and the entry aft to the "His" Head. To starboard, a matching double door auto lit hanging locker, a three drawer chest and a vanity with a Lucite stool sit beneath a matching glass countertop and an opening porthole with drapes and blackout shade; aft is the entry to the "Hers" Head. The suite is finished with fourteen overhead LED lights, a dressing mirror, and a SAT TV equipment

cabinet discreetly behind the entry door.

Starboard side “hers head”

Entered via a bi-fold door, this serene head presents a white marble tile sole, a vanity with two cabinet doors and two drawers beneath a solid surface countertop with a Kohler undermount china sink, and new LED sconces flanking two mirrored medicine cabinet doors. Inboard, a Jacuzzi tub offers handheld or wall mountable fixtures. The compact Headhunter toilet sits opposite, accompanied by a two-door storage cabinet and an opening porthole with drapes and blackout shade. Overhead are four LED lights and an exhaust fan.

Port side “his head”

With an Emperador dark marble sole accented by a white marble inset, this head blends richness and utility. The vanity carries two louvered doors and two drawers beneath a solid surface countertop with a Kohler undermount china sink, with two mirrored medicine cabinet doors above. Inboard, a shower with a bi-fold obscured glass door, a tiled sole and a wall mounted shower fixture offers privacy and pressure. The full size Headhunter toilet sits beneath an opening porthole dressed with Roman shades and a blackout shade. Four overhead LED lights, a large storage cabinet, an exhaust fan, and an A/C vent with a dedicated digital A/C control serving both heads complete the space.

Port side queen bed cabin

Entered from inboard, this welcoming cabin features a raised athwartships queen berth against the outboard bulkhead, backed by an upholstered headboard and two opening portholes with drapes and blackout shade. Four

drawers and soft toe kick lighting lie beneath the berth. Flanking nightstands with three doors each provide smart storage, while inboard aft a corner cabinet hosts a 32" Samsung TV with storage below. Forward, a cedar lined hanging locker with a bi-fold door stands beside the private head entry. Above, nine LED lights and digital A/C control set the ambiance.

Port guest head

Entered at the aft end, the guest head features a generous single basin vanity with three cabinets and three doors below, a shimmering glass tile backsplash, and three mirrored medicine cabinets above. The full size Headhunter toilet provides comfort, while outboard a Jacuzzi tub with clear glass sliding doors and a porthole within invites relaxation. Overhead are five LED lights and an exhaust fan.

Starboard side guest cabin

Entered from aft, the starboard guest cabin offers twin raised single berths with upholstered headboards, with four cabinet doors beneath the inboard berth and four large drawers under the outboard berth. Inboard aft, a corner shelf supports a 19" Sharp TV. Above the outboard berth, two opening portholes hide behind drapes and a blackout shade, while at the foot of the outboard berth a cedar lined hanging locker with a bi-fold door keeps attire fresh. Between the berths forward lies the ensuite head. Seven overhead LED lights and digital A/C controls complete the comforts.

Starboard guest cabin head

The wood vanity presents a door and two drawers beneath a Corian countertop with a china sink and widespread faucets, backed by a glass tile

splash and two mirrored medicine cabinets. The Headhunter toilet sits beneath an opening porthole with shade, and the shower offers a bi-fold obscured glass door, wall-mounted or handheld fixture and dedicated light. Overhead are four LED lights and an exhaust fan.

Foredeck

Forward, raised aluminum bulwarks frame teak over aluminum decks and aluminum bow rails, with stanchions carrying a varnished rail and dual vinyl-covered lifelines beneath lustrous varnished cap rails. Gutters with freeing ports manage water, and an aluminum/acrylic deck hatch provides access to the crew cabin. Two built-in aluminum storage lockers on the foredeck, each with cushions and covers, invite lounging, while a galvanized through-hull Danforth-type anchor on the starboard side teams with an Ideal 32V windlass with wildcat, up and down foot switches for windlass and capstan, and an all-chain galvanized rode. A built-in bow seat with removable cushions, cover and storage below invites conversation, with a bow pennant staff and varnished pennant pole ahead. The five-panel windshield with three windshield wipers/washers stands protected by a black Textilene windscreen, and international navigational lights ensure visibility. Port and starboard fender tracks on the house sides finish this purposeful foredeck.

Side decks

Boarding is seamless with a four-step vertical Marquipt boarding ladder and an eight-step Marquipt Tide Ride ladder, both serving teak over aluminum side decks. Vast full-beam storage lockers to port and starboard create cavernous spaces, while sliding Pilothouse doors port and starboard, purposeful rail breaks at midship, four overhead lights, and two hinged doors into the dining area make movement intuitive and safe.

Lazarette

From the aft deck, a six rung ladder leads down to the lazarette where steering gear, an aft deck direct expansion A/C unit rated at 24,000 BTU, fluorescent lighting, storage boxes, a Sentry 32V 30 amp battery charger, and access to the new lazarette in the hull extension are neatly organized, alongside two spare four blade propellers. Equipment located here includes eight 8V batteries, a hydraulic davit motor, a 250 gallon water tank above the deck, an 800 gallon below deck fuel tank, a high water alarm, additional fluorescent lighting, and a large hinged deck hatch above the new lazarette.

Flybridge equipment features:

The Flybridge invites open air living with a Venturi windscreen and non skid painted decking, port and starboard L shaped seating runs each stretching 14' with covers, removable cushions and storage below, and a large center cabinet with six hinged doors housing a sink and Magic Chef drinks fridge with a grill mount above. The hydraulically hinged mast carries spreader lights, two radar platforms crowned by Garmin 6' radar antennas, an HD7 KVH TracVision dome, meal/absent lights, several GPS sensors, downlights and more. A 14' aluminum bow Bimini top, a chest freezer with cover, low level LED deck lighting, stereo speakers and a deck washdown spigot complete this breezy upper deck.

Flybridge helm equipment

At the helm, two Garmin 12" touchscreen MFDs pair with a Simrad AP70 autopilot head, two DDEC electronic engine monitors, DDEC electronic engine controls, and a DDEC emergency control with station active controls. Two Garmin 4" data displays and two Jabsco searchlight controls flank a

stainless steel helm wheel, with key start/stop switches, a Naiad bow thruster joystick, and a Fusion stereo head at hand. Two upholstered helm chairs with footrests face four hinged access panels that open to cavernous storage below the brow. A helm cover, a 5" magnetic compass, and an ICOM M506 YKB set with cover complete the station.

Boat deck

The boat deck's non-skid painted aluminum decks offer secure footing, with a Viking life raft inspection due 8/27, a chest freezer with cover, an EPIRB, and a robust UMT tender crane rated at 1800 lbs, all with ample room remaining for a large tender.

Crew area

Down eight carpeted steps from the Pilothouse, the crew foyer and engine room access unfold: aft through a watertight door lies the engine room, while forward the crew foyer features a Lonseal vinyl sole, a Samsung washer and an Electrolux dryer. To port sits the Captain's cabin with private head; forward lies the crew cabin with its own private head.

Captain's cabin

Outboard along the port hull side, a raised double berth rests above six drawers, while inboard a desk with a drawer and bookshelf above creates a practical workspace. At the foot of the berth, a 32" Samsung TV pairs with a cedar-lined, auto-lit hanging locker. Two opening portholes bring air and light, while a Lonseal vinyl sole, six overhead LED lights and digital A/C controls refine the environment. The ensuite head includes a Galley Maid toilet, a vanity with storage below plus a sink and two-door medicine cabinet above, and a

stall shower with a bi-fold door, seat and storage cabinet.

Crew cabin

Forward to starboard, the crew cabin provides upper/lower bunks set outboard, with two opening portholes above the upper berth and three large drawers beneath the lower; each berth enjoys its own reading light. Inboard, a chest of three drawers stands below an inset mirrored panel, while at the foot of the berths a cedar-lined auto-lit hanging locker organizes uniforms. Further forward lies the head. A Lonseal vinyl sole, digital A/C controls, five LED light fixtures and a Samsung 24" TV complete the space.

Crew head

All the way forward, the crew head offers a Headhunter toilet, a vanity with storage below plus a sink and mirrored medicine cabinet above, and in the forepeak a stall shower with a bi-fold door and access to the chain locker.

Engine room equipment

Purpose-built for reliability, the machinery space is centered on twin 1080 HP 12V92 Detroit Diesel DDEC main engines with electronic engine controls, a back-up system for the DDEC controls, and emergency shut-down cables. A Leeson 32V oil-change pump with manifold, two 230V blower fans, and three-bowl Racor 1000FH fuel filters for each engine protect and service the powertrain, which turns through Detroit Diesel DD273EV transmissions with a 2.55:1 ratio onto 3" stainless-steel prop shafts and Tides Marine dripless shaft seals. The generators benefit from manual fuel pumps and two remote 500FG Racor fuel filters. Four integral fuel tanks supply the range: 1200 gallons in the forward centerline tank, 1000 gallons amidships centerline, 830 gallons aft

centerline, and 800 gallons in the new lazarette. Freshwater comes from two amidships tanks totaling 1400 gallons, driven by two Headhunter 230V water pumps valved for rapid switchover and heated by two Isotemp stainless steel 30 gallon water heaters, with a dockside water inlet and pressure regulator. Waste handling includes a 32V macerator pump with Y valve. Climate is commanded by a recently replaced 120,000 BTU Cruiseair chilled water A/C system and a 230V chilled water circulation pump. Steering is hydraulic with a Baldor 220V steering pump mated to Jastram hydraulics, while seawater is strained through Perko and Groco bronze alloy strainers and protected by a CO2 auto/manual fire suppression system. Maneuvering confidence comes from a Naiad four blade hydraulic bow thruster and a Naiad 252 hydraulic stabilizer system. Bilge safety is enhanced by three 24V Rule bilge pumps with auto/manual modes, a 32V bilge pump manifold, and a 32V suction pump in the engine room. Spares include two four blade propellers. Naiad systems include a bow thruster hydraulic reservoir with pressure gauges and a back up cooling pump system. The engine space gleams with Awlgrippd engines detailed with a chrome package, two CRS 300 coolant recovery bottles, and an Airsep crankcase ventilation system, plus a Headhunter water pressure storage tank and a hydraulic PTO off the starboard engine. Illumination is excellent with A/C fluorescent lighting and DC incandescent lighting. Serviceability is assured by an oil change pump with manifold, an aluminum topped workbench with vice and stainless steel sink, a six drawer tool chest, painted deck plates, a Husky four drawer tool chest, and a spigot with hose.

Electrical

Power is robust and redundant: a 120/240 volt A/C electrical system feeds two 120/240 volt 100 amp shore cords on Glendenning cable reels, plus one 30 amp shore cord outlet and cord for the yacht's tender. A full bonding

system and CAPAC hull protection monitoring safeguard the structure. The 12/24/32 volt DC system is supported by two 30 kW Northern Lights 1800 RPM, four cylinder, 60 Hz generators; eight 8V batteries serving twin 32V banks; two 12V Group 31 generator batteries; two 12V 8D house batteries; and four Guest battery switches. Two 24V belt driven alternators, one on each generator, maintain charge, aided by a Sentry 32V 30 amp charger and a Mastervolt 12/35 3 12V 35 amp charger. Analog volt and amp gauges monitor from the engine room panel. Two Acme 25 KVA transformers with a Boost option via a 5% or 10% rotary switch stabilize supply, while each generator enjoys a full gauge package with start/stop. The main engine room electrical panel features two analog volt meters, an amp meter with a six position rotary switch, forty 220 volt circuits and thirty five 120 volt circuits with magnetic breakers, five four position rotary switches for gen1, gen2, shore top and shore bottom, all behind a clear Lexan cover.

Comments

Originally launched at 81' and extended by 6' in 1992, this Burger gained the coveted semi enclosed aft deck, a vast boat deck and a wealth of additional lazarette stowage. SHEPSL X now enjoys a range of 1,000 nautical miles at 11 knots (1450 rpm) burning only 38 gph total. She appears to have benefited from a series of generous owners; the current custodian is no exception. He has lavished care and investment upon her and, according to Burger Yachts, is the only Burger owner to have simultaneously owned three sizeable Burgers—75', 87' and 118'. SHEPSL X stands tall, boasts several standout features and is fully ready for your inspection.

Continual improvements

SHEPSL X has been cherished by the same owner for over sixteen years, with

the same captain at the helm for nine, and the program has been one of continual upgrades. Recent interior refinements include new carpets (2022), soft goods (2022), electric blinds on the main deck (2022), fresh upholstery for sofa and chairs (2022), a new dining table and chairs (2022), new vinyl overheads (2024), a new aft deck table with cushions (2024), new LED light fixtures throughout (2023), new TVs throughout (2023), upgraded galley appliances (2023), new vanities in all guest baths (2022), a new galley floor (2022), and new upholstery for the Pilothouse bench (2022) and galley settee (2022). Mechanical upgrades include two stainless steel water heaters (2024), a rebuilt tender davit with new controls, upgraded steering pump and ram, a new autopilot, two Garmin MFDs, a Garmin radar, Garmin 4" depth/speed displays, an upgraded hydraulic cooling pump, new house batteries (2024), a 32 volt battery bank new in 2023, six new Headhunter Royal Flush toilets, two A/C compressors new in 2020, and new aft deck A/C in 2020. Exterior improvements feature new canvas and covers on the bow and sundeck (2023), two flybridge helm chairs, and a new Bimini top (2022). In December 2024, a comprehensive yard period at Yacht Management Group in Dania Beach totaling \$189,000 delivered full bottom paint, PropSpeed, running gear service, hull paint repair with new accent stripes, rub rails and window frames, and fresh paint on the brow, foredeck, transom, doghouse and Pilothouse window frames. SHEPSL X has been maintained to the highest standards; a quick inspection will confirm she is far more than just another classic Burger.

CONTACTS

Shestakov Yacht Sales is a brokerage company specializing in the sale and service of yachts worldwide. The company offers services for buying and selling both new and used motor yachts, sailing vessels, and luxury superyachts. They also provide yacht registration, insurance, technical maintenance, crew selection, and charter organization services across the U.S., Canada, Latin America, the Caribbean, and the Bahamas.

The founder and lead broker of the company is Andrey Shestakov, a licensed and certified expert with extensive experience in marine engineering and shipbuilding.

The company has an extensive network of partnerships with major yacht manufacturers worldwide and provides services in multiple languages, including Russian, Ukrainian, Spanish, and English. The office is in Dania Beach, Florida, USA.

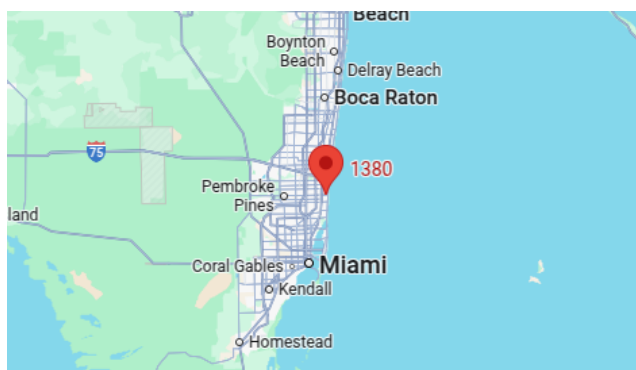
For more information and to view available yachts, you can visit the company's official website: <https://shestakovyachtsales.com>

Contact details

Phone: +1(954)274-4435

Email: andrey@shestakovyachtsales.com

Address



1380 Weeping Willow Way, Hollywood,
Florida 33019