

## ALENIEL - JOHNSON



**Builder:** [Johnson](#)

**LOA:** 87' 0" (26.52 m)

**Year Built:** 2005

**Beam:** 23' 0" (7.16 m)

**Model:** 87' Motor Yacht

**Max Draft:** 22' 5" (6.83 m)

**Price:** \$2,469,000 USD Subject to change.

**Cruising Speed:** 16 Knots (18.41 MPH)

[See full listing on our website](#)

**Location:** West Palm Beach, United States

**Max Speed:** 19 Knots (21.86 MPH)

---

# TABLE OF CONTENTS

---

<b>OVERVIEW .....</b>	<b>3</b>
<b>SPECIFICATIONS .....</b>	<b>5</b>
Basic Information .....	5
Dimensions .....	5
Speed, Capacities and Weight .....	5
Accommodations .....	6
Hull and Deck Information .....	6
Engine Information .....	6
<b>GALLERY .....</b>	<b>7</b>
<b>DETAILED DESCRIPTION .....</b>	<b>29</b>
<b>CONTACTS .....</b>	<b>37</b>

---

## OVERVIEW

---

ALENIEL stands as an imposing, graciously proportioned motor yacht, offering the sense of interior volume usually reserved for much larger superyachts. Extensively refreshed over the last three years, she will appeal to an owner who cherishes the classic layout of an American-style cruising yacht: a sweeping aft deck and a commanding flybridge that confirm her identity as a true Flybridge Motor Yacht. The arrangement centers on an expansive, atrium-like country galley and four staterooms that comfortably sleep four couples, delivering both liveability and formal elegance.

Her foredeck is a notable destination in its own right, thoughtfully appointed with a wide sunpad and lounge seating that beckon guests to linger over panoramic views and lingering sunsets—spaces many yachts of lesser breadth simply cannot offer. Inside, the atmosphere is refined by sumptuous joinery and custom furnishings, a combination that creates a timeless, elevated interior. Between the last two owners some \$1.8 million has been invested in improvements, and the current custodian has sustained a careful program of upgrades while a dedicated full-time captain oversees her maintenance and continual enhancements.

In 2025 both Northern Lights generators were fully overhauled to zero hours and fitted with new meters, an important renewal that complements ongoing service. The vessel's silhouette, penned by Bill Dixon and distinguished by upper and lower vertical glazing, remains instantly recognizable and continues in production today in a 93 model with an extended platform. Boarding through electric stainless-steel sliders, the sheer scale of her interior becomes immediately evident, aided by an impressive 23'6" beam—meaningfully wider than most yachts in this class and only inches shy of a 112' Westport—setting this 87 Johnson apart within the Raised Pilothouse category.

That breadth manifests in a capacious salon and the sweeping country galley,

while generous walkaround side decks and four convenient boarding points preserve easy circulation. Systems and handling are engineered for confidence: ABT Trac fin stabilization, hydraulic bow and stern thrusters, and Dockmate wireless control allow conning from virtually anywhere aboard. For precision maneuvering there are twin wing stations to port and starboard on the aft main deck, alongside full controls on both the flybridge and the raised pilothouse. Propulsion is provided by robust Caterpillar C32 engines, renowned for their durability and global service network, with all maintenance current.

For those considering motor yachts up to 112 feet, this 87 Johnson Flybridge Motor Yacht is an unexpectedly generous and impeccably maintained choice, combining poise, capability, and presence in a package that will satisfy even the most discerning yachtsman.

---

# SPECIFICATIONS

---

## Basic Information

---

**Category:**  
Motor yachts

**Year Built:**  
2005

**Sub category:**  
Motor Yacht

**Country:**  
United States

**Model Year:**  
2005

## Dimensions

---

**LOA:**  
87' 0" (26.52 m)

**Max Draft:**  
22' 5" (6.83 m)

**Beam:**  
23' 0" (7.16 m)

## Speed, Capacities and Weight

---

**Cruise Speed:**  
16 Knots (18.41 MPH)

**Water Capacity:**  
690 Gallons

**Max Speed:**  
19 Knots (21.86 MPH)

**Fuel Capacity:**  
3300 Gallons

## Accommodations

---

**Total Heads:**

5

**Crew Cabin:**

2

## Hull and Deck Information

---

**Hull Material:**

Fiberglass and Plastic Yachts

**Hull Designer:**

Dixon Yacht Design

**Deck Material:**

Fiberglass

**Interior Designer:**

N/A

**Hull Configuration:**

N/A

## Engine Information

---

**Engines:**

2

**Engine Type:**

Inboard

**Manufacturer:**

CAT

**Fuel Type:**

Diesel

# GALLERY

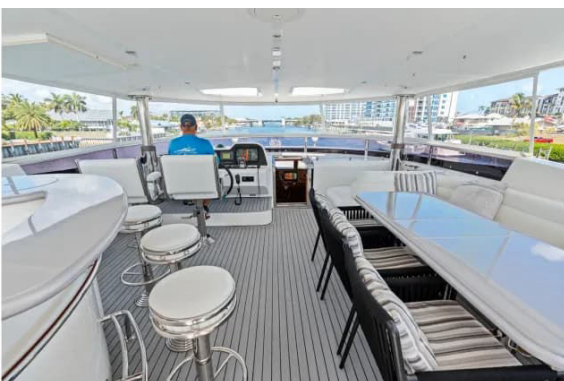
















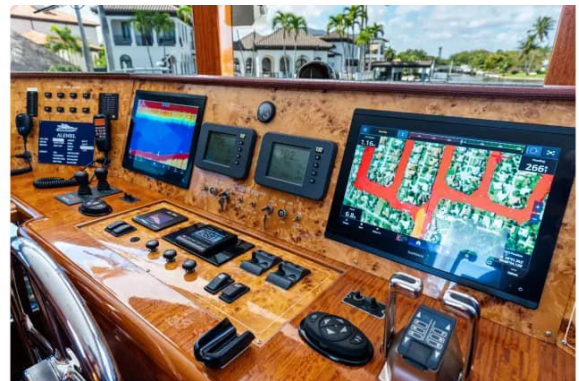
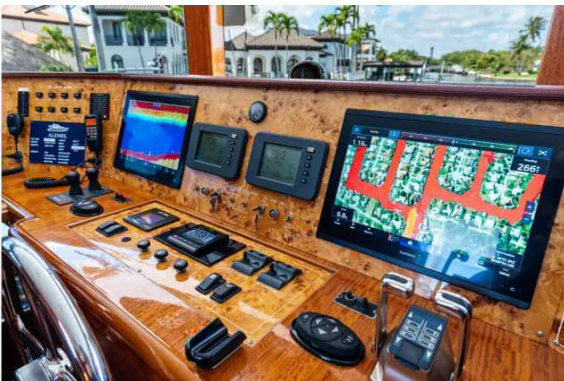








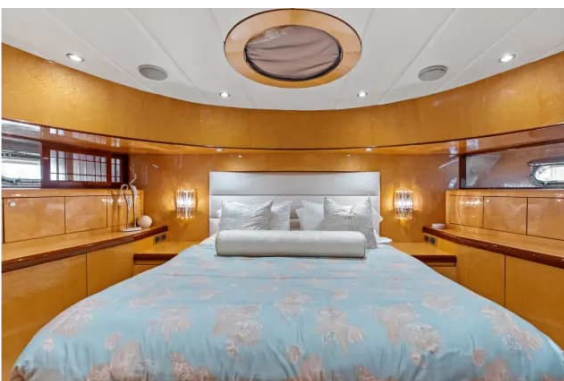


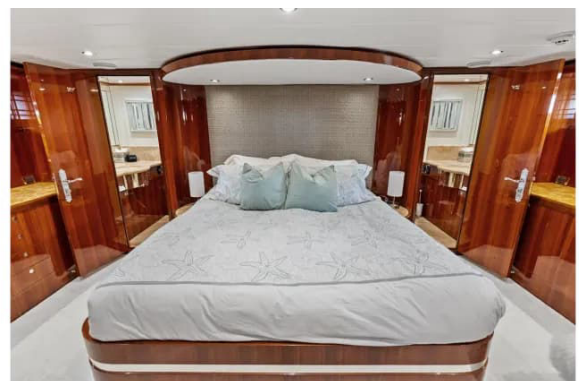


















---

# DETAILED DESCRIPTION

---

## Previous refit updates

---

A thoughtful 2023 interior refresh elevates every moment on board: new headliners and wall coverings lend a crisp, contemporary canvas; bespoke salon furniture includes a custom leather L-shaped sofa with a pullout bed to welcome additional guests; refined drapery and plush new carpet underfoot complement fresh interior upholstery throughout. Comfort extends to new mattresses, bedding, headboards, and linens, while the owner's accommodation has been re-insulated and soundproofed for serene privacy. Practical upgrades abound, from renewed heads and toilets and a port cabin thoughtfully converted from twin accommodation to a generous queen, to a complete hardware update from gold/brass to silver and a comprehensive conversion from halogen to LED lighting. The galley benefits from updated appliances alongside a Miele washer and dryer, and the refit further encompasses refreshed navigation equipment and electronics together with renewed air conditioning ducting and air handlers. Outside, the 2023 exterior updates speak to enduring style and utility: NuTeak decks underfoot, tables professionally refinished in Sandalwood Metallic, and fresh exterior upholstery are all beautifully illuminated by newly converted LED lighting. Entertaining is effortless with a standalone BBQ grill plus upgraded refrigeration, an icemaker, and a deep freezer, while navigation equipment and electronics were also renewed. Safety received equal attention, with three new life rafts fitted to accommodate eighteen persons, and the helm now feels crisp and modern with new seating and a new steering wheel. Electronics were contemporized in 2023 for confident cruising: Garmin multifunction displays, Garmin Autopilot, and a Garmin fish finder integrate seamlessly with a geofence and GOST security system with cameras and iPhone integration. Connectivity is enhanced

via Wi-Fi with dome/antenna, satellite phone, and satellite TV with dome/antenna. Engineering oversight is bolstered by CAT engine room monitors, and entertainment shines through a JBL Fusion AV system paired with JL Audio speakers. In the machinery spaces, all services are up to date, and the scope is comprehensive: CAT engine sensors were renewed; CAT after-coolers and the cooling system were refit; CAT hoses, rings, and clamps refreshed; and hydraulic system pumps, hoses, and clamps addressed in kind. AC chillers were replaced and an additional air handler added to the machinery space; the fresh-water pump was replaced and a secondary fresh-water pump installed for redundancy; the entire blackwater system was refit with the addition of a sewage treatment system. Fuel tanks were drained, deep-cleaned internally, and fuel polished; Norther Light generator services were completed on both units, including replacement of cooling systems, hoses, and clamps. Electrical assurance comes from new AGM batteries and battery chargers, plus renewed thru-hull fittings. The hull was stripped and refit with three layers of fiberglass from bow to stern, followed by a full bottom job including hull, running gear, and zincs. Underwater lighting was replaced, and the fire-fighting system and detectors were renewed for complete peace of mind.

## Walkthrough

---

Aft deck and swim platform welcome you with a NuTeak deck, an updated docking station to starboard with CAT throttle control and thrusters, and a Kobelt manual clutch/throttle docking station to port, all framed by hinged hull-side boarding gates to port and starboard. Boarding is effortless via two stainless steel hinged boarding gates on the swim platform, a robust stainless steel boarding ladder, and an extended hardtop overhead washing the area with ten LED lights and four JL Audio overhead speakers. Entertainment descends on demand from an overhead drop-down

twenty inch Sharp Aquos TV, and a stainless steel pneumatic sliding door ushers you into the salon. A U shaped formal dining area is anchored by a Sandalwood Metallic finished high low table, while two security cameras keep vigilant watch. Handling lines is simplified by two Maxwell UC2200 wide drum capstans with foot switches and two stainless steel cleats with four fairleads. Creature comforts include a U Line icemaker and refrigerator, eight oversized stainless steel hoop rails with two hinged entry gates, an oversized NuTeak laid swim platform with a factory twenty four inch extension, an SSI hot/cold transom shower, four underwater lights, and two 100 AMP shore cords powered by Glendenning. Inside the salon, a large custom leather L shaped sofa hides a pullout bed for extra guests and faces high gloss cherry woodwork with burl inlays and matching storage cabinetry. Two custom leather armchairs pair with a chic acrylic sofa seat and a chic acrylic coffee table, while a built in entertainment console discreetly houses a fifty inch ceiling dropdown TV, a JBL Fusion AV system, and a mounted six CD changer. Four overhead stereo speakers and built in storage drawers complement plush white carpeting to set a refined tone. The formal dining area showcases a striking custom acrylic dining table surrounded by eight custom leather dining chairs, supported by built in cabinetry for serving platters, dishes, silverware, and glassware with abundant storage throughout. A dual level granite pop up bar with storage stands ready for service, while a custom pocket door with glass inlay offers discreet access to the galley. From the foyer, you enjoy direct access to the day head, the country kitchen, guest accommodations, the doghouse, the wheelhouse, and the starboard wing door, all carried over plush white carpeting. In the galley, granite countertops meet light Ottoman Beige marble flooring and a stainless steel double basin sink with a Grohe removable faucet above an InSinkErator garbage disposal. Cold storage is generous with GE side by side refrigerator/freezers with icemaker, cooking is handled by a GE glasstop stove/burner with stainless steel oven below and a GE over the range microwave oven, cleanup

is simplified by a Miele dishwasher and a GE trash compactor, and vintages rest perfectly in a Whynter glass door wine cooler. Systems are at your fingertips with a SeaRecovery watermaker remote panel, a stainless steel wheelhouse divider, and, on the main deck, a day head with a Headhunter toilet set over light Ottoman Beige marble with a compass rose inlay and an Absolute Black Galaxy granite top with a glass sink. The sundeck and flybridge were engineered for versatility, featuring a factory designed hydraulic/electric descending fiberglass hardtop and a factory designed folding radar arch for Great Lakes access, each providing twenty feet of clearance at the lowest height. Underfoot, NuTeak laid decks set the scene, while two fixed observation windows in the hardtop and a stainless steel sliding hatch door lead to the wheelhouse. Entertaining areas abound, with a C shaped dining area offering storage beneath the seating and a Sandalwood Metallic finished hi low table, and an aft U shaped seating area served by two oval Sandalwood Metallic finished hi low tables, all secured by eleven stainless steel hoop rails aft and a stainless steel flag staff. Indirect rope lighting at the bar and aft seating, eight JL Audio speakers, and three upholstered stainless steel barstools create a club like ambiance. The bar adds a built in ice bucket, a U Line refrigerator, and stainless steel foot and hand rails, while a drop down twenty inch Sharp Aquos TV and nine overhead LED lights complete this elevated open air salon. The owner's suite centers on a king berth flanked by built in marble top nightstands with storage and four drawers beneath the berth, joined by a cedar lined hanging locker with additional storage drawers and cabinets. Entertainment comes via a forty eight inch Samsung TV, an Onkyo AV receiver with five cabin speakers, and a Toshiba DVD player, while a full size dressing mirror, swing arm reading lights, abundant outboard storage to port and starboard, and plush white carpeting add quiet luxury. Private access to his and hers en suite head and shower awaits to both starboard and port, each featuring a Brescia Oniciata marble vanity top, large mirrored cabinet doors, a stainless steel porthole, a

Headhunter toilet, a tempered glass shower door, and both a rain shower overhead fixture and a mountable handheld shower. In the port guest stateroom, a queen berth with nightstand and under berth storage is set against high gloss cherry wood with burl finish, complemented by a large cedar lined closet and six overhead storage lockers. A fifteen inch Sharp Aquos TV, two overhead stereo speakers, AC display/control, and plush white carpeting ensure comfort, while the en suite head offers private security/nanny access to the VIP stateroom, a walk in stall shower with a tempered glass door, a Sunny Beige marble countertop and sole, a Headhunter toilet, and two mirrored medicine cabinets. The starboard guest stateroom mirrors the sense of occasion with a queen berth with nightstand and storage below, high gloss cherry wood with burl finish, a large cedar lined closet, and six overhead storage lockers. A fifteen inch Sharp Aquos TV, two overhead stereo speakers, AC display/control, and plush white carpeting pair with an en suite head featuring a walk in stall shower with tempered glass door, a Sunny Beige marble countertop and sole, a Headhunter toilet, and two mirrored medicine cabinets. Private access via the port aft stairwell leads to the crew and a purpose built machinery space designed by Van Capellan with noise abatement insulation. Power is delivered by two CAT C32 engines with manual engine room gauges and hour meters driving two ZF 2070A transmissions, supported by a 1400 GPD Sea Recovery watermaker. Maneuverability comes via one ABT twelve inch thirty eight horsepower bow thruster and one ABT twelve inch thirty eight horsepower stern thruster, while an ABT TRAC stabilization system with six square foot fins smooths the ride. The space is further equipped with two Hynautic hydraulic PTOs, four Dual Racer 75/1000 fuel filters, Tides dripless shaft and rudder seals, and a Reverso four point oil change system. Bilge management is robust with six Rule 3700 GPH bilge pumps and six Rule high water alarms, while ventilation is ensured by four Fuji AF 300 soft start blowers, an Airspeed crankcase ventilation system, and a

Delta T engine room ventilation system with LCD monitors. Additional systems include a Nutone central vacuum, two Tuthill 24 volt fuel transfer pumps, two stainless steel Torrid forty gallon hot water tanks, heavy duty stainless steel rudders with three inch shafts, a HeadHunter Tank Sentry holding tank level indicator, a HeadHunter blackwater waste treatment system, a Kobelt mechanical engine control system as backup, and two five ton 72,000 BTU chillers. Crew quarters offer two cabins in a bunk configuration, with the captain's cabin enjoying a full size bottom bunk. Entertainment and comfort are catered to with a fifteen inch Sharp Aquos TV in both cabins, a stereo system, and a settee and table area with seating for three. A twenty inch Sharp Aquos TV serves the crew mess, and a further twenty inch Sharp Aquos TV adds flexibility. The galley style amenities include a three burner Kenyan cooktop, a Daewoo refrigerator, a stainless steel sink with a Grohe removable spray faucet, a Fisher Paykel dishwasher, and a GE convection/microwave oven. A tender garage provides access to steering and the fire system, and the large open garage, complete with windlass and a cradle to launch the tender, means you can always keep the tender with you.

## Disclaimer

---

The details of this yacht are offered in good faith, yet no guarantee is made regarding the accuracy of the information or any warranty on the vessel's condition. The yacht is offered subject to prior sale, price change, or withdrawal from the market without notice. This information is provided as a convenience to clients and is not intended to constitute direct representation of a specific yacht for sale.

## Key features

---

Powered by CAT C32 engines showing 4,850 hours with services up to date,

including the 1,000 hour service, heat exchangers, and aftercoolers completed between 2023 and 2025, this yacht is mechanically confident from the first turn of the key. Twin Northern Lights generators were rebuilt in 2025 and have fewer than 300 hours on each, underscoring reliable, redundant power at anchor. The inviting country kitchen easily accommodates additional bar stools, while the tender garage (tender excluded) elevates practicality for extended cruising. A versatile four stateroom, five head layout is complemented by crew quarters for three to four with an additional head and shower, and the refreshed interior décor and AV complete a genuinely turn key experience.

## Recent updates

---

A robust program of care has kept this yacht fresh and ready, starting with a full detail and wax in October 2025 and continuing with a new flybridge enclosure and back cover the same year. Ten batteries were replaced in 2025, both 33 kW generators were rebuilt in 2025 and, as of March 16, show 289 and 310 hours respectively, and the engine cooling system received comprehensive service. Underbody work included fresh bottom paint in 2025, new shaft bearings in 2025, and replacement Veem propellers in 2025, an investment of \$50K. Structural assurance comes from a reinforced transom and a tender garage re-glassed with twelve layers in 2025, while the bow storage was newly painted. Interior livability was elevated with new living room chairs and sofas, and safety was advanced with a new fire system board in 2025. Controls were renewed on the flybridge and at the stern, and the crew quarters gained a new refrigerator in 2025. HeadHunter systems were serviced, Starlink connectivity (marine and local) was added alongside a dedicated crew communication system, and all televisions were replaced with Apple TV integration in 2025. Practical redundancy was increased with the addition of a second fresh water pump in 2025 and a new A/C chiller pump in 2025, and the bow windlass

wiring was replaced in 2025 for dependable anchoring.

# CONTACTS

---

Shestakov Yacht Sales is a brokerage company specializing in the sale and service of yachts worldwide. The company offers services for buying and selling both new and used motor yachts, sailing vessels, and luxury superyachts. They also provide yacht registration, insurance, technical maintenance, crew selection, and charter organization services across the U.S., Canada, Latin America, the Caribbean, and the Bahamas.

The founder and lead broker of the company is Andrey Shestakov, a licensed and certified expert with extensive experience in marine engineering and shipbuilding.

The company has an extensive network of partnerships with major yacht manufacturers worldwide and provides services in multiple languages, including Russian, Ukrainian, Spanish, and English. The office is in Dania Beach, Florida, USA.

For more information and to view available yachts, you can visit the company's official website: <https://shestakovyachtsales.com>

## Contact details

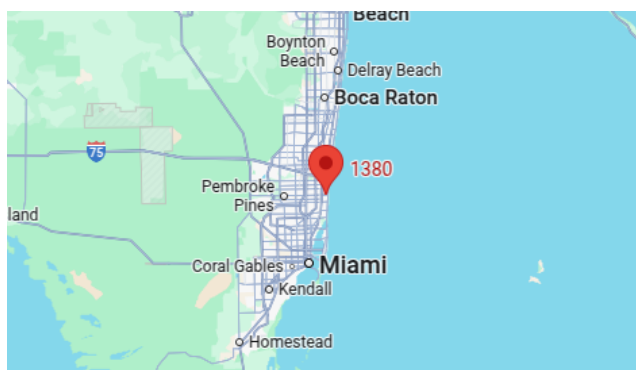
---

**Phone:** +1(954)274-4435

**Email:** [andrey@shestakovyachtsales.com](mailto:andrey@shestakovyachtsales.com)

## Address

---



1380 Weeping Willow Way, Hollywood,  
Florida 33019