



SHESTAKOV

Yacht Sales

27 METRI - AZIMUT YACHTS



Builder: [Azimut Yachts](#)

LOA: 88' 0" (26.82 m)

Year Built: 2019

Beam: 21' 0" (6.58 m)

Model: Grande 27M

Min Draft: 15' 7" (4.75 m)

Price: \$5,169,051.47 USD Subject to change.

Max Draft: 20' 9" (6.33 m)

[See full listing on our website](#)

Location: Imperia, Italy

Cruising Speed: 24 Knots (27.62 MPH)

Max Speed: 28 Knots (32.22 MPH)

If you would like to buy a yacht **27 METRI - AZIMUT YACHTS** or would like help answering any questions concerning purchasing, selling, or chartering a yacht, please call **+1(954)274-4435** or click here on <https://shestakovyachtsales.com>

TABLE OF CONTENTS

OVERVIEW	3
SPECIFICATIONS	4
Basic Information	4
Dimensions	4
Speed, Capacities and Weight	4
Accommodations	4
Hull and Deck Information	5
Engine Information	5
GALLERY	6
DETAILED DESCRIPTION	17
CONTACTS	21

OVERVIEW

A 27-metre superyacht built in Italy by Azimut Yachts and delivered in 2019, she is a distinguished member of the Grande Collection that marries Italian craftsmanship with contemporary lines and assured performance. The exterior, conceived by Stefano Righini, contrasts beautifully with the warm, refined interiors by Achille Salvagni, and this particular hull has been finished to an elevated specification with an array of upgrades beyond the standard model. Arranged for effortless cruising and elegant entertaining, she accommodates up to 10 guests across five sumptuous staterooms, each with its own ensuite, while up to four crew are berthed in separate quarters to ensure discreet, professional service and complete privacy. Expansive glazing and crisp, sophisticated geometry flood the accommodation with natural light, and extensive exterior decks expand the onboard living experience; the flybridge layout offers sweeping views, generous lounging and an alfresco dining area with bar, the aft deck functions as a convivial social hub, and the foredeck is arranged as a serene sun lounge. Built in GRP and equipped with advanced onboard systems and comprehensive sound insulation for a quiet, composed passage, she is driven by twin MAN 1,900 hp diesel engines that deliver a comfortable cruising speed of 24 knots and a top speed of 28 knots. Privately owned from new and never chartered, the yacht shows very low hours on her main engines (approximately 1,075) and has been diligently stored ashore each winter. An ANG frequency converter shore power system provides seamless 50/60Hz compatibility at marinas worldwide, while fin stabilizers enhance comfort both underway and at anchor. The versatile five-cabin layout includes a coveted on deck master suite, and the bespoke ambiance is reinforced by freestanding Paola Lenti (Milano) furnishings, underscoring the yacht's blend of design pedigree, refined style and genuine blue water capability.

SPECIFICATIONS

Basic Information

Model Year:
2019

Country:
Italy

Year Built:
2019

Dimensions

LOA:
88' 0" (26.82 m)

Beam:
21' 0" (6.58 m)

Min Draft:
15' 7" (4.75 m)

Max Draft:
20' 9" (6.33 m)

Speed, Capacities and Weight

Cruise Speed:
24 Knots (27.62 MPH)

Water Capacity:
528 Gallons

Max Speed:
28 Knots (32.22 MPH)

Fuel Capacity:
2509 Gallons

Accommodations

Total Heads:
5

Hull and Deck Information

Hull Material:

Fiberglass and Plastic Yachts

Hull Designer:

N/A

Deck Material:

Fiberglass

Interior Designer:

N/A

Hull Configuration:

N/A

Engine Information

Engines:

2

Engine Type:

Inboard

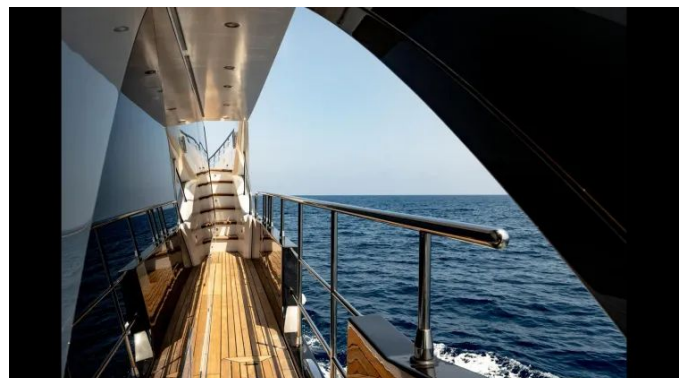
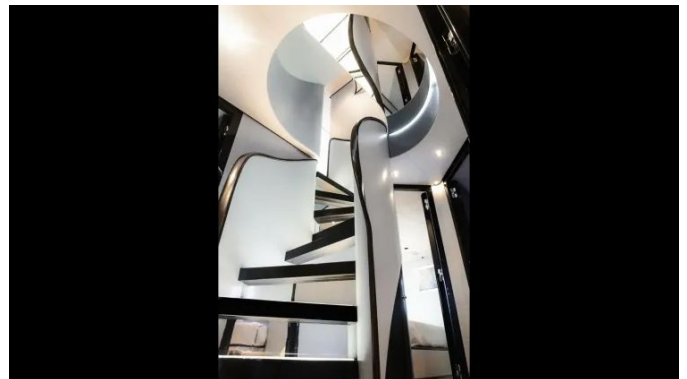
Manufacturer:

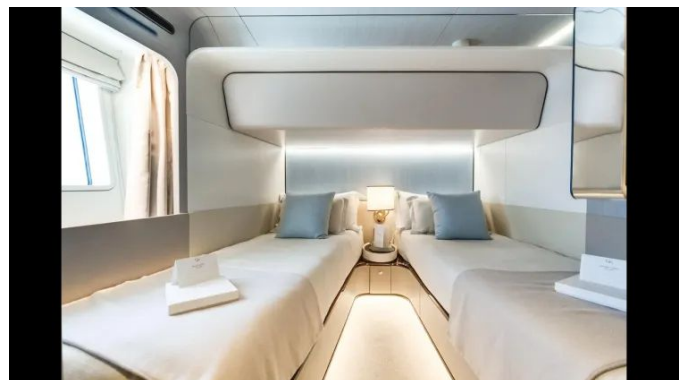
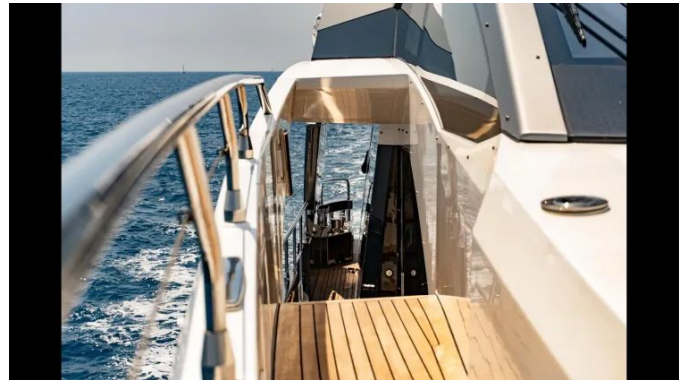
MAN

Fuel Type:

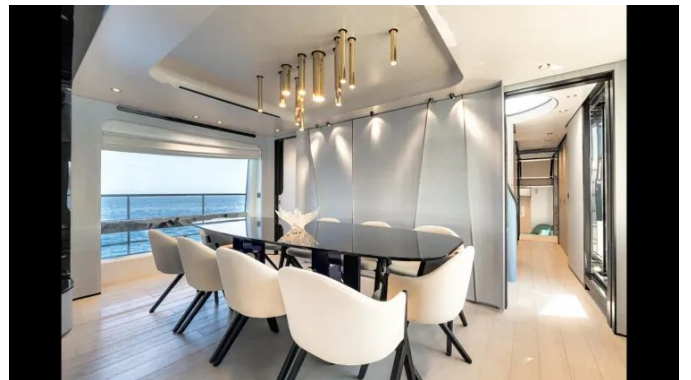
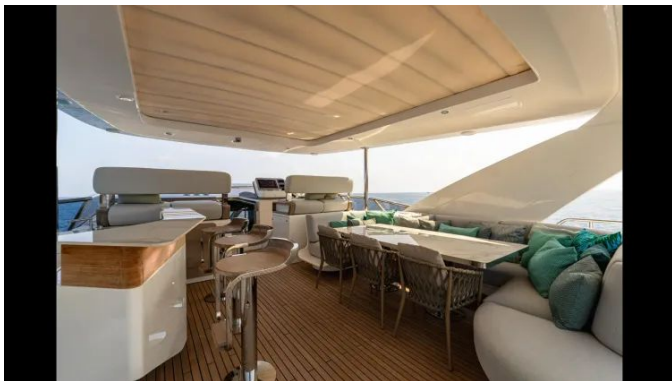
Diesel

GALLERY



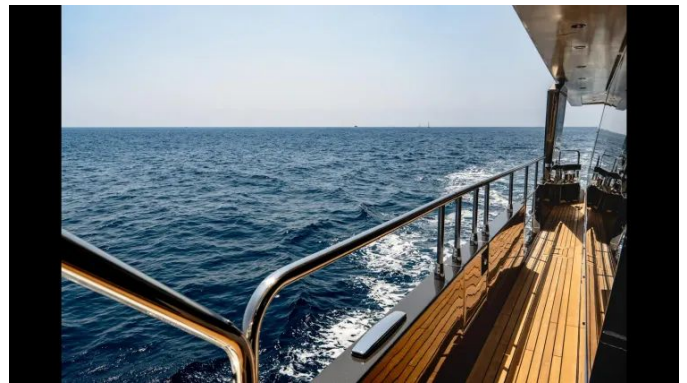
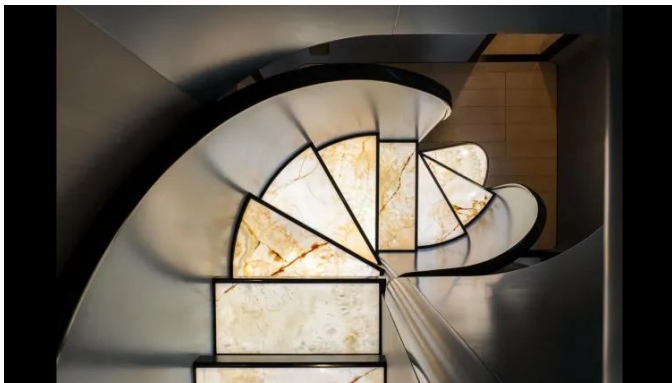








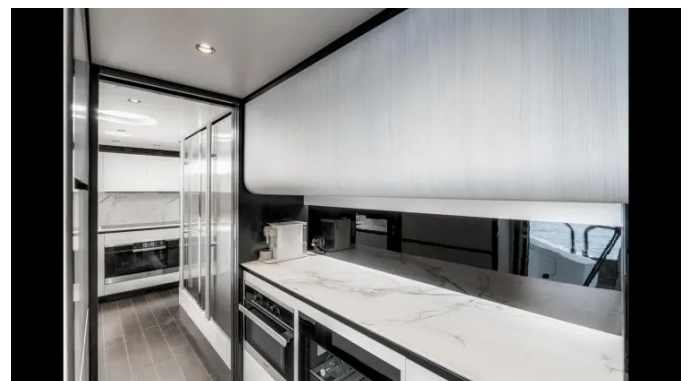
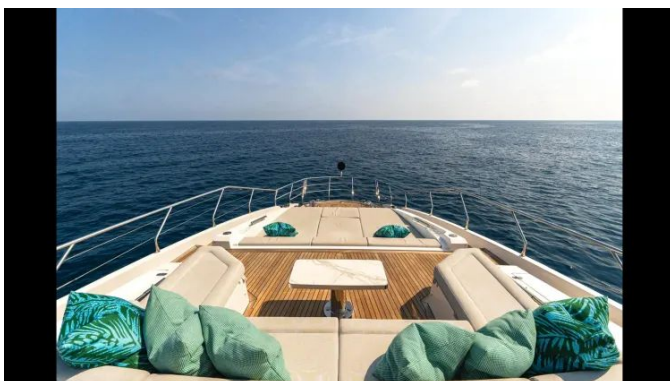
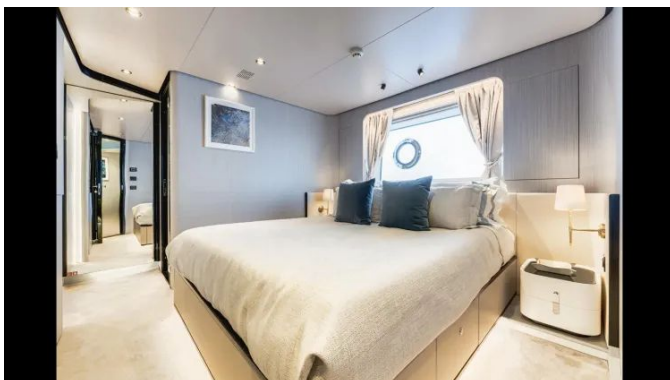












DETAILED DESCRIPTION

Main characteristics

Delivered in 2019 and registered under the Cayman Island flag, this motor yacht marries graceful lines with a poised presence. She features an LOA of 26.78m (87.1ft), an LH of 23.95m (78.7ft) and an LWL of 22.62m (74.3ft), framed by a wide beam of 6.59m (21.7ft) and a draft of 1.93m (6.4ft) that together ensure both steady seakeeping and easy access. With a gross tonnage of 145 and a displacement of 93 ton at full load (75.9 ton at dry load), she delivers the mass and balance expected of a yacht in this class.

Capacities

She marries pace with refinement, maintaining a confident cruise at 24 knots, capable of 28 knots at full power, and able to conserve fuel at an economical 11 knots. Fuel burn mirrors these operating modes, recording 580 litres/hr at cruising speed, 700 litres/hr at maximum speed and a modest 100 litres/hr at economical speed. Those consumption figures correspond to ranges of 360 nm at cruising speed, 320 nm at maximum speed and an impressive 880 nm when traversing at economical speed. Long-range capability is ensured by substantial tankage, with a fuel capacity of 9,500 litres / 2,509 US gallons, water capacity of 2,000 litres / 528 US gallons, black water capacity of 850 litres / 224.5 US gallons and grey water capacity of 850 litres / 224.5 US gallons.

Machinery

Propulsion is provided by two MAN V12-1900 Tier III engines, each rated at 1900 HP and paired with ZF 3050V reduction gears configured with a 3:1 ratio; power is carried along shaft lines to five-blade NiBrAl propellers, the shafts

protected by MTM900 mechanical seals, while stainless steel rudders deliver precise handling. The diesel system is safeguarded by Racor filtration, close-quarters manoeuvring is refined by a CMC BTM30H hydraulic bow thruster working alongside a CMC hydraulic stern thruster, and onboard comfort underway is enhanced by CMC stabilizers; climate control is provided by a 180,000 BTU air-conditioning system, and extended cruising autonomy is supported by an Idromar watermaker producing 130 litres per hour.

Electrical

The yacht's electrical system has been meticulously engineered to deliver unwavering power, centered on two 29 kW generators operating at 60 Hz and a versatile distribution network providing 110 V at 60 Hz alongside 24 V and 12 V supplies. Dual ASEA converters ensure smooth and reliable power conversion across all onboard systems, while a dedicated charging arrangement—two Mastervolt 80 Ah chargers for the service bank, one Mastervolt 30 Ah charger for the engine batteries and one Mastervolt 10 Ah charger for the generator batteries—keeps every battery in optimal condition. Stored energy is generous, with ten 90 Ah 12 V DC service batteries, six 90 Ah 12 V DC engine starter batteries and two 90 Ah 12 V DC generator batteries delivering ample reserves to meet all operational demands.

Electronics

A luxurious and highly capable electronics package anchors the vessel, featuring two Simrad RS90 VHF radios and a dedicated interphone system, with reception ensured by a KVH TV6 satellite antenna and onboard internet provided via an LTE router fitted with four bonding radios for robust ship-wide Wi-Fi. The helm is governed by a Simrad IS40 autopilot operated through a Simrad OP10 keyboard, backed by a Simrad GPS and a suite of four Simrad

NSS-16 Evo 2 multifunction displays that serve as primary chart plotters. Underwater profiling and log functionality are delivered by the Simrad DST800 echosounder, while situational awareness is enhanced by a Simrad Broadband 4G radar with a 36 nm range, a FLIR camera and a comprehensive CCTV system. Seamless connectivity and system integration are further supported by the Simrad GOFREE WiFi wireless module.

Deck

At the fore, the deck's anchoring arrangement is built for absolute control and ease of use, centered on twin 4000 W, 110 V, 60 Hz three-phase anchor windlasses that deliver confident holding and silky deployment. Those windlasses work with two 79 kg anchors and two 12 mm chains, each 100 m in length, providing reliable security in varied conditions. Berthing and line handling are refined by twin 3600 W, 110 V, 60 Hz three-phase capstans, offering powerful, precise control of docklines. Boarding is effortless via an electro-hydraulic passerelle operating on 24 V DC and rated to 150 kg, while at the waterline a generous swimming platform measuring 3811 x 2555 mm and rated to 1000 kg creates a spacious, stable area for easy sea access and waterside leisure.

Tender and toys

A Williams DJ445 tender stands ready to deliver guests ashore with effortless grace, while an enticing suite of water toys transforms every anchorage into a private seaside retreat; among them a Seabob F5 for exhilarating underwater exploration, a SUP for serene paddling, a wakeboard, an inflatable donut and comprehensive snorkelling equipment, with leisure further assured by a pool with net for untroubled play and relaxation on the water.

Disclaimer

All information is supplied in good faith; however, its accuracy cannot be guaranteed and no warranty is made regarding the condition of the vessel. This yacht may be subject to prior sale, alterations in price, or withdrawal from the market without notice. The particulars are provided solely for the convenience of prospective clients and do not constitute a formal representation of any specific yacht being offered for sale.

CONTACTS

Shestakov Yacht Sales is a brokerage company specializing in the sale and service of yachts worldwide. The company offers services for buying and selling both new and used motor yachts, sailing vessels, and luxury superyachts. They also provide yacht registration, insurance, technical maintenance, crew selection, and charter organization services across the U.S., Canada, Latin America, the Caribbean, and the Bahamas.

The founder and lead broker of the company is Andrey Shestakov, a licensed and certified expert with extensive experience in marine engineering and shipbuilding.

The company has an extensive network of partnerships with major yacht manufacturers worldwide and provides services in multiple languages, including Russian, Ukrainian, Spanish, and English. The office is in Dania Beach, Florida, USA.

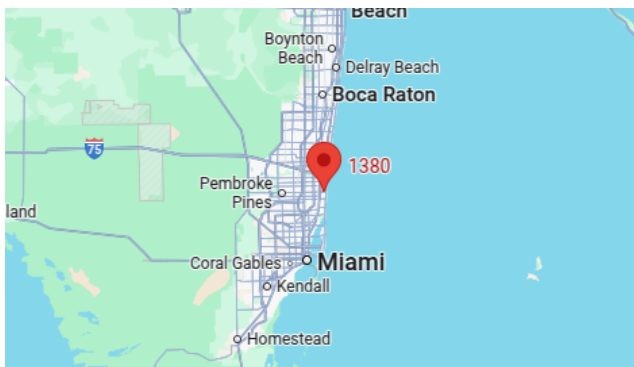
For more information and to view available yachts, you can visit the company's official website: <https://shestakovyachtsales.com>

Contact details

Phone: +1(954)274-4435

Email: andrey@shestakovyachtsales.com

Address



1380 Weeping Willow Way, Hollywood,
Florida 33019