



SHESTAKOV
Yacht Sales

NONE - LADENSTEIN YACHT



Builder: [LADENSTEIN YACHT](#)

LOA: 88' 0" (26.82 m)

Year Built: 2026

Beam: 21' 0" (6.60 m)

Model: L88

Max Draft: 19' 5" (5.92 m)

Price: \$4,100,000 USD Subject to change.

Cruising Speed: 23 Knots (26.47 MPH)

[See full listing on our website](#)

Location: Fort Lauderdale, United States

Max Speed: 35 Knots (40.28 MPH)

If you would like to buy a yacht **NONE - LADENSTEIN YACHT** or would like help answering any questions concerning purchasing, selling, or chartering a yacht, please call **+1(954)274-4435** or click here on <https://shestakovyachtsales.com>

TABLE OF CONTENTS

OVERVIEW	3
SPECIFICATIONS	4
Basic Information	4
Dimensions	4
Speed, Capacities and Weight	4
Accommodations	4
Hull and Deck Information	5
GALLERY	6
DETAILED DESCRIPTION	10
CONTACTS	15

OVERVIEW

The 2026 Ladenstein L88 is an 88-foot luxury motor yacht that unites spirited performance with refined sophistication for the discerning owner in the United States. Built with advanced fiberglass composite construction and a planing hull, she delivers the crisp, confident ride of a true performance yacht, settling effortlessly into a 23-knot fast cruise and capable of topping out at 35 knots when the horizon beckons. A generous 21-foot beam affords notable stability and expansive interior volume, while a 2,642-gallon fuel capacity and 528-gallon water capacity enable extended coastal passages with the autonomy and reassurance expected of a contemporary superyacht. On deck and within, the L88 is conceived to blur the line between inside and out, with sweeping molded fiberglass decks and luminous salons framed by expansive glazing that pours natural light over refined lounge and dining areas designed for relaxed entertaining. Below decks, a thoughtful accommodation layout is complemented by six beautifully appointed heads, ensuring privacy and comfort for owners and guests on weekend escapes or longer bluewater voyages. Quiet when underway and serene at anchor, the L88 embodies a fresh, modern take on the planing motor yacht—athletic when you press her, unhurried when you linger, and perpetually inviting. Available now in the United States, she is equally suited to chic harbor hops, sunlit coastal runs, and memorable evenings under the stars.

SPECIFICATIONS

Basic Information

Model Year:
2026

Country:
United States

Year Built:
2026

Dimensions

LOA:
88' 0" (26.82 m)

Max Draft:
19' 5" (5.92 m)

Beam:
21' 0" (6.60 m)

Speed, Capacities and Weight

Cruise Speed:
23 Knots (26.47 MPH)

Water Capacity:
528 Gallons

Max Speed:
35 Knots (40.28 MPH)

Fuel Capacity:
2642 Gallons

Accommodations

Total Heads:
6

Hull and Deck Information

Hull Material:

Fiberglass and Plastic Yachts

Hull Designer:

N/A

Deck Material:

Fiberglass

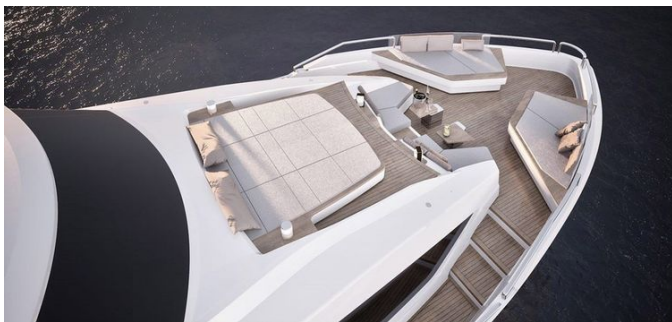
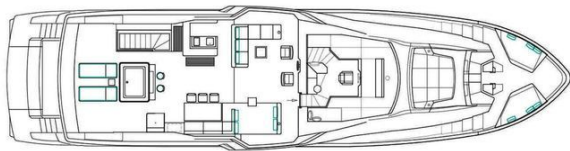
Interior Designer:

N/A

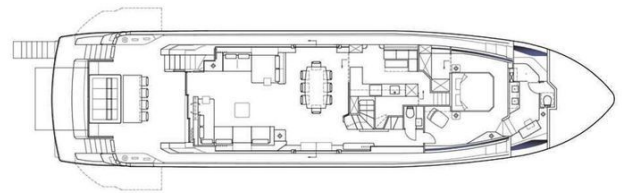
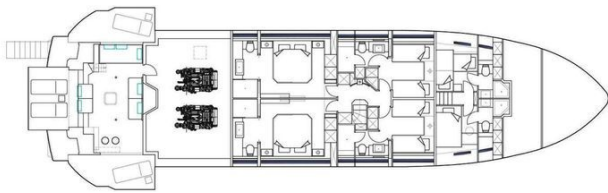
Hull Configuration:

Planing

GALLERY









DETAILED DESCRIPTION

Main description

A new opportunity for a bespoke build awaits with the Ladenstein L88, an 89-foot statement of refined, personalized yachting where your preferences shape every inch. More than simply a yacht, the L88 is a tailored extension of your lifestyle: Ladenstein's custom-build programme enables you to specify layouts, select materials, determine finishes and furnishings, and incorporate desired amenities—whether that means a private gym, expanded crew quarters or a bespoke galley arrangement—so that each component is conceived around your requirements.

Marrying European design sensibility with the precision of Austrian engineering, the L88 offers an uncommon synthesis of elegance, dynamic capability and individual expression. Life aboard is elevated by four principal exterior living areas conceived for memorable moments: a 63 sqm flybridge, one of the largest in its class; a 22.5 sqm foredeck lounge appointed with a seating area, infinity sun loungers and flexible space adaptable for yoga, a treadmill or even a driving range; a 21 sqm alfresco cockpit arranged for dining and relaxation with a dining table and sun lounger; and a 21 sqm sea-level beach club that features an aft-rotating platform and two side balconies. When the internal beach club is not configured as a multi-stage garage it becomes a calm retreat, with provision to fit an optional sauna, gym equipment or a complement of water sports toys.

Features

The exterior is composed to encourage effortless leisure, featuring a foredeck and bow arranged for sun-filled lounging, a sweeping sundeck that delivers

panoramic views, a sheltered cockpit crafted for convivial gatherings, and a waterside beach club that brings you intimately closer to the sea. Inside, an elegant main salon establishes an atmosphere of refined living, accompanied by a dedicated dining and bar area perfect for memorable entertaining and a well-appointed galley ready to serve every occasion. Accommodation is designed for privacy and comfort with a sumptuous master suite, a tranquil VIP suite, flexible guest cabins and separate crew quarters to ensure discreet, seamless service. A comprehensive electronics suite unites navigation, communications and entertainment systems to provide assurance at the helm and pleasure at anchor. Beneath it all, robust technical and mechanical engineering supports engine options from MTU, CAT or MAN, allowing performance to be tailored to your cruising ambitions.

Options - upgrades available

This builder-selected options list is subject to revision prior to 2026 delivery, and as technologies advance electronic packages and mechanical equipment may be updated at any time. Propulsion can be specified from MAN, CAT or MTU across a variety of power and size choices, and interior arrangements may be tailored with an optional five-cabin layout. For unparalleled seakeeping you may select the SeaKeeper SK40 gyro stabilizer, available with a second controller, or choose Humphree Interceptors with auto trim control or with both auto trim and list control. Range extensions are achieved with an additional 3,000-liter (793-gallon) long-range diesel tank, complemented by an Alfa Laval fuel cleaning system and an extra day tank. Mechanical refinements include the Alfa Laval fuel cleaner, an integrated oil change system servicing both main engines and generators, two sets of diesel fuel MAG conditioning systems, one freshwater marine connection—Glendinning model M (1/2 - 50 ft.)—and a shore water plug located on the foredeck.

Electrical enhancements offer thirty-five kW Kohler three-phase generators

installed to port and starboard, a recommended configuration for vessels fitted with SeaKeeper, together with two 63 Amp shore support inlets served by Glendinning Cable Master systems (15 m / 49 ft each), two Glendinning Cable Master remote controls and a shore power converter to provide international 110V/230V service. Service battery options include a 900 Ah Lithium Power Pack with two 100 A battery chargers or a 1200 Ah Lithium Power Pack with three 100 A battery chargers, while climate control may be specified as tropical air conditioning or as a silent nighttime mode powered by lithium batteries via an 1800 Ah Lithium Power Pack with three 100 A chargers, thereby removing the reliance on shore power or generator use while at anchor.

On the hull, anchoring can be upgraded to two 100 kg / 220.5 lb mirror-polished stainless-steel kedge anchors paired with two 100 m / 328 ft stainless-steel anchor chains, each elevated from the standard galvanized finish, and an anchor chain wash system may be fitted to both port and starboard. Underwater illumination can be specified as twelve Ocean LED E7 lights or upgraded to fifteen Premium Ocean LED E7 Color units, and the hull may be finished in a painted standard or metallic appearance. The sun deck has been conceived as a private retreat and can be enhanced with a whirlpool featuring overflow and cover, a two-person bar with two stools and the option of a TV on a lift, an exterior glass shower tower and a Besenzoni electric canopy installed on the aft sun deck measuring approximately 3,000 x 4,200 mm (9'8" x 13'8"). Two sunroof openings—one forward and one aft—are available, each selectable in glass, soft top or hard top with a Lamella shutter system. At the sun deck helm an electronically elevating steering platform rising 20 cm / 8 inches is offered, together with an upgrade to two electronic pilot seats in lieu of manual and a third remote control for engines and thrusters.

Forward deck options include a Seasmart awning supported by six carbon fiber posts or a lighter six-to-four post configuration, a cold shower via the

Glendinning Hosemaster model M (1/2 x 50 ft) and a removable carbon shower column with hot and cold water and protective cover. Within the superstructure one may add side sliding doors accessing the salon to port and another set to starboard, framed by the Ladenstein signature perimeter glass light. The cockpit can be shaded by a Besenzoni electronic canopy of approximately 3,000 x 4,000 mm (9'8" x 13'1"). The transom swim platform may be extended by 1,100 mm / 3.5 ft for a total of 2,100 mm / 6'9", and the beach club can be transformed into a resort-like amenity area housing a Bauer J3E scuba compressor in a cabinet for four scuba tanks, a trash compactor, an air compressor and a panorama sauna with a glass partition measuring approximately 2,050 x 1,250 mm (6'7" x 4'1").

Navigation and instrumentation packages include a Furuno Nav-tex receiver NX-300 and a Raytheon wind display with transducer, supplied as one set for the wheelhouse and a second set for the sun deck, while interior arrangements are flexible: the salon dining table extends from seating eight to ten guests, guest cabin one features two single berths that convert to a double and guest cabin two can offer the same flexibility in the five-cabin configuration or be specified as a Work Life Balance Office in place of a stateroom. The owner's bathroom is available with a Tecma Privilege separate bidet and the yacht can be outfitted with up to six toilets with bidet function. Privacy and convenience are enhanced by one set of electric blinds in the salon, one set for the owner's suite, one set for the VIP cabin and one set for a guest cabin, supported by a central vacuum system or systems; additional interior options include a complete set of canvas protection for the carpets and an extra safe.

Connectivity and hospitality upgrades include a Starlink satellite system and multiple icemakers—installed in the galley, salon, cockpit and on the sun deck—together with a wine cooler for twenty bottles. Exterior personalization is available in the form of a backlit name on the transom with pricing per individual letter in standard stainless steel, and one set of mosquito screens

for the portholes may be fitted. For watersports readiness a William Jet Tender 435 with a bespoke cradle in the beach club can be specified, with an additional dedicated cradle positioned beneath to accommodate a jet ski.

Mechanical disclaimer

Engine and generator hours are presented as of the original listing date and reflect information supplied to the listing broker by the owner and/or direct readings from the engine hour meters. These figures are provided for reference and cannot be guaranteed by the broker. It is the sole responsibility of the purchaser and/or the purchaser's agent to verify engine and generator hours, to determine the status and scope of any warranties—whether express, implied or otherwise—and to confirm any major overhauls along with all other representations contained in the listing brochure.

Disclaimer

The Company provides the particulars of this vessel in good faith; however, no representation or warranty is given as to the accuracy of the information nor as to the vessel's condition. Prospective purchasers are advised to appoint their own brokers or independent, suitably qualified surveyors to verify any information they wish to have confirmed. This vessel is offered subject to prior sale, alteration of price, or withdrawal from the market without notice.

CONTACTS

Shestakov Yacht Sales is a brokerage company specializing in the sale and service of yachts worldwide. The company offers services for buying and selling both new and used motor yachts, sailing vessels, and luxury superyachts. They also provide yacht registration, insurance, technical maintenance, crew selection, and charter organization services across the U.S., Canada, Latin America, the Caribbean, and the Bahamas.

The founder and lead broker of the company is Andrey Shestakov, a licensed and certified expert with extensive experience in marine engineering and shipbuilding.

The company has an extensive network of partnerships with major yacht manufacturers worldwide and provides services in multiple languages, including Russian, Ukrainian, Spanish, and English. The office is in Dania Beach, Florida, USA.

For more information and to view available yachts, you can visit the company's official website: <https://shestakovyachtsales.com>

Contact details

Phone: +1(954)274-4435

Email: andrey@shestakovyachtsales.com

Address



1380 Weeping Willow Way, Hollywood,
Florida 33019