

FUNSEEKER - SUNSEEKER



Builder: [Sunseeker](#)

LOA: 88' 0" (26.87 m)

Year Built: 2012

Beam: 21' 0" (6.40 m)

Model: 88 Yacht

Max Draft: 19' 8" (6 m)

Price: \$2,399,000 USD Subject to change.

Cruising Speed: 23 Knots (26.47 MPH)

[See full listing on our website](#)

Location: Marco Island, United States

Max Speed: 30 Knots (34.52 MPH)

TABLE OF CONTENTS

OVERVIEW	3
SPECIFICATIONS	4
Basic Information	4
Dimensions	4
Speed, Capacities and Weight	4
Accommodations	5
Hull and Deck Information	5
Engine Information	5
GALLERY	6
DETAILED DESCRIPTION	14
CONTACTS	23

OVERVIEW

The 2012 Sunseeker 88, Funseeker, is an indulgent flybridge motor yacht that unites graceful lines, meticulous craftsmanship and lively performance. She accommodates up to eight guests in four generous staterooms, presenting voluminous interior living and gracious alfresco spaces, crowned by a sweeping flybridge outfitted with relaxed lounge seating and an open air dining area. Propelled by twin MTU engines and fitted with advanced stabilizers alongside modern navigation and entertainment suites, she delivers composed, whisper quiet cruising. With over \$750,000 in recent enhancements, Funseeker has been comprehensively refreshed and is genuinely turnkey—an elegant luxury superyacht ready for immediate enjoyment.

SPECIFICATIONS

Basic Information

Category:
Motor yachts

Year Built:
2012

Sub category:
Motor Yacht

Country:
United States

Model Year:
2012

Dimensions

LOA:
88' 0" (26.87 m)

Max Draft:
19' 8" (6 m)

Beam:
21' 0" (6.40 m)

Speed, Capacities and Weight

Cruise Speed:
23 Knots (26.47 MPH)

Water Capacity:
396 Gallons

Max Speed:
30 Knots (34.52 MPH)

Fuel Capacity:
2245 Gallons

Accommodations

Total Heads:

5

Crew Cabin:

2

Hull and Deck Information

Hull Material:

Fiberglass and Plastic Yachts

Hull Designer:

N/A

Deck Material:

Fiberglass

Interior Designer:

N/A

Hull Configuration:

N/A

Engine Information

Engines:

2

Engine Type:

Inboard

Manufacturer:

MTU

Fuel Type:

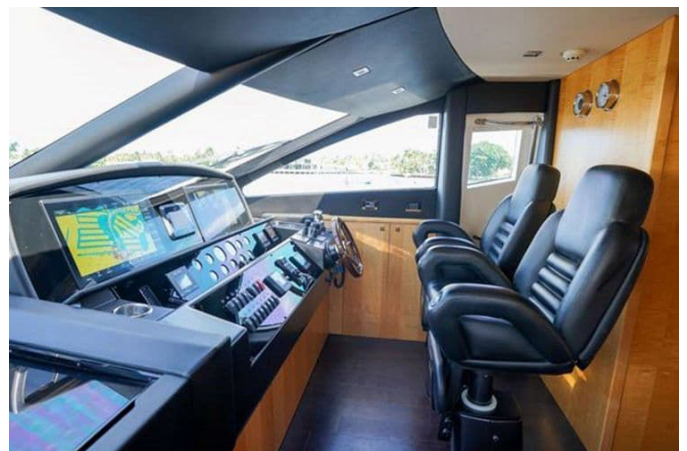
Diesel

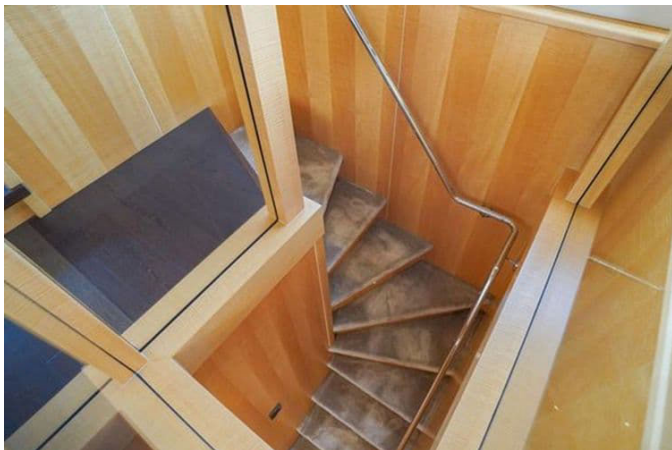
GALLERY





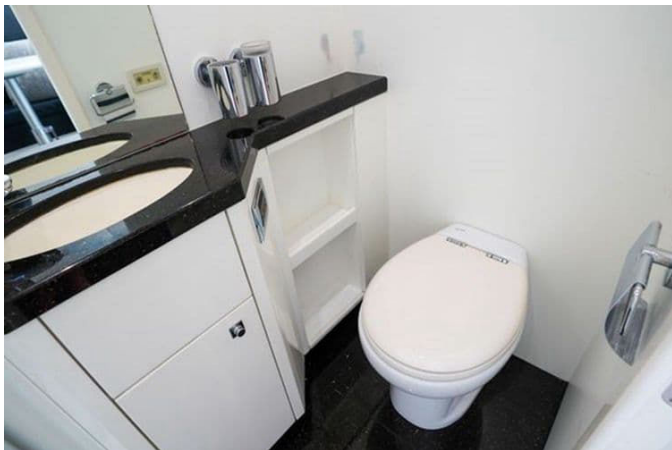












DETAILED DESCRIPTION

Description

Step aboard the 2012 Sunseeker 88 Yacht "FUNSEEKER" and indulge in unmatched luxury on the water, where accommodations for up to eight guests are arranged across four exquisitely appointed staterooms and anchored by a full-beam master suite, while a professional crew of four enjoys comfortable quarters to ensure flawless service. The contemporary interior, finished in satin cherry with walnut flooring and enhanced by premium wood veneers and supple leathers, exudes sophisticated ease, and outdoor living unfolds effortlessly from an expansive flybridge—complete with lounge dining, a wet bar and a hard top with electric canopy and extension—to foredeck sunpads and a teak-appointed aft deck ideal for relaxation and entertainment. Performance and poise are assured by twin MTU 12V2000 M94 1950 hp engines, twin 32 kW Kohler generators, a shore power converter, generous extra fuel capacity of 2245 gal / 8500 l, an Idromar watermaker, digital ABT TRAC stabilizers and a third starboard-side docking station, complemented by Marine Air Tropical air conditioning driven by three compressors and underwater lights set into the transom. A state-of-the-art navigation and entertainment suite together with ABT TRAC fin stabilizers make every passage aboard "FUNSEEKER" smooth, quiet, and unforgettable. More than \$750,000 in recent work and upgrades underlines meticulous stewardship: in 2025 two new individual AC units installed in August, a new washer and dryer in August, a new dishwasher in August, a complete new JBL speaker and stereo system throughout with an operating iPad, two new TVs in two staterooms, new windshield and side window mesh covers in July, satellite domes painted to match the hull sides in March, a new watermaker pump plus a new spare and the watermaker rebuilt, a new freshwater pump, a new Garmin radar antenna,

a new Garmin screen on the bridge, a new MTU shifter on the bridge, life rafts recertified, two new stainless steel anchors, six new Kingsley Bate teak-frame chairs aft around the table, a complete bottom paint job in March, the engine room painted and detailed in June, several repairs and updates completed by the RPM/MTU dealer, generators serviced in June, and new engine room lights in September. In 2024 all new soft goods were installed on the bridge, aft area, and bow with custom covers for all; a Starlink system was installed; a new retractable sun shade was fitted on the bridge; shafts were tested and trued and new cutlass bearings fitted; a new AC Clearline system and a new automatic hull-cleaning ultrasonic system were installed; and a new stainless-steel lighted nameplate "FUNSEEKER" was added. In 2023 three new AC chillers were installed; all-new teak was fitted on the swim platform, aft area, steps to the bridge, and bow walkthrough; the swim platform received a complete rebuild including hydraulics, lines, and fiberglass; all thru-hulls were replaced in October; stabilizers were rebuilt; fire suppression systems were updated; and Robert Cimpagne recertification was completed. Contact us today to schedule your private preview aboard the Sunseeker 88 "FUNSEEKER."

Electronics

The yacht's electronics suite balances redundancy with simplicity, offering AIS for situational awareness, a responsive autopilot, a full-function navigation center with plotter and GPS, radar, a log-speedometer and repeaters that mirror critical data for multiple stations. Communication and broadcast needs are managed through VHF and radio systems, while a shipboard computer integrates with a flat-screen TV and a separate television to support media and vessel systems. Entertainment and onboard audio are tailored through a CD player and DVD player with VCR capability amplified by cockpit speakers, and the entire suite benefits from onboard Wi-Fi for seamless connectivity and streaming.

Inside equipment

Onboard comfort is comprehensive and thoughtfully specified, with air conditioning and heating systems, hot water, and both electric and manual bilge pumps working alongside a sea water pump to safeguard the vessel. Hotel-style conveniences include a deep freezer, refrigerator, microwave oven, oven, dishwasher, washing machine and a fresh water maker to support extended cruising. Precision maneuvering is assured by bow and stern thrusters, while power stability and maintenance are supported by a battery charger. Sanitary arrangements are versatile, offering an electric head, a chemical head and a dedicated marine head to suit operational needs.

Additional equipment

Thoughtful enhancements aboard the yacht include an intuitive touch screen interface for systems management, evocative underwater lights that dramatize the hull at night, and a genuine walk-around deck arrangement that encourages effortless circulation from bow to stern and enhances safety and social flow while underway.

Outside equipment / extras

Life outdoors aboard the Sunseeker is richly appointed with comfortable cockpit cushions, a cockpit shower and table, and extensive teak laid in both the cockpit and along the sidedecks to create a warm, nautical atmosphere. Practical deck handling and tender operations are supported by davits, an electric winch and a hydraulic winch, a gangway and a hydraulic gangway, a hydraulic bathing platform and hydraulic swim step, a swimming ladder, and a fin stabilizer to improve seakeeping. Safety and utility are bolstered by a liferaft and Power Poles, and protection comes from covers including a hard top for

all-season use. Electrical equipment for flexible power management includes a generator, an inverter and a shore power inlet to ensure reliable energy both at the dock and underway.

Aft deck

A welcoming aft deck centers on a hydraulic swim platform and a generous U-shaped settee with a folding teak table that comfortably seats ten, supported by two storage lockers and two stainless steel boarding gates that facilitate boarding and tender operations. Seamless deck operations are aided by two Lewmar windlasses and a Benzenzoni passerelle, while service and discretion are maintained by a chill box and a trash bin to port; evenings are enriched by a television and warm courtesy lighting that extend the social season outside.

Main saloon

Through a large stainless-steel sliding door the main saloon reveals an elegant lounge of white leather sofa, love seat and chair complemented by an additional suede leather love seat, centered around a high-gloss, book-matched wood and stainless-steel table. Dining is arranged around a high-gloss book-matched table for eight with a wine chiller and multiple glass storage cabinets, while four designer wall sconces and two designer lamps cast a warm glow across Wenge wood floors and sycamore wood paneling. Entertainment is elevated by a 55-inch TV on an electric lift, a KVH Track Vision satellite system with multi-receivers, Orca lighting controls, Direct TV and Bose surround sound, and an on-deck head completes the area with a wash basin and a Tecma head for convenience.

Galley

The galley is primed for gourmet service, equipped with a large side-by-side stainless-steel refrigerator-freezer, a microwave oven, two ovens and a four-burner cooktop, all set against striking Black Galaxy granite countertops and Wenge wood floors that combine durability with elegance. A side-opening door to port facilitates service and ventilation, while abundant drawers and cabinet space keep culinary essentials organized for efficient provisioning and service.

Lower helm

At the lower helm a leather L-shaped settee with table invites companionable cruising beside a side-opening door to starboard and the Sunseeker ship's monitor and control panel. Rich Wenge wood floors and sycamore paneling frame two Benzenzoni leather electric helm chairs with footrests, an array of two 24-inch Garmin screens (new 2022) and three Garmin MFD mini-screen multi-displays, plus a shaft speed and load percentage gauge to keep the captain fully informed. Command systems include a Garmin autopilot, a Sanshin searchlight with remote control panel and analog engine and transmission gauges; ABT TRAC zero-speed stabilizer fins, TRAC hydraulic bow and stern thrusters, a joystick docking station, an MTU engine monitor panel and ZF single-lever controls deliver precise, confidence-inspiring handling.

Master stateroom

The full-beam master stateroom is a sanctuary of scale and refinement, featuring a king-size pedestal bed with an espresso leather base and headboard, four under-berth storage drawers and extensive drawer and locker storage throughout. Matte walnut cabinetry and sycamore wood paneling

create a warm, luxurious envelope, while a vanity desk with chair and a portside settee add functional elegance; soft illumination from two lamps and two dedicated reading lights and a large walk-in hanging locker complete the suite.

Master head

The master head is indulgent, appointed with an oversized shower set over Black Galaxy granite flooring, designer fixtures, two Althea wash basins with designer faucets and Black Galaxy granite countertops and floor. Sanitary amenities include a Techma head alongside a Tecma bidet, a towel warmer rack, a medicine cabinet and abundant locker storage, all composed to deliver both luxury and practical convenience.

Guest state room (port)

The port guest stateroom flexes from two side-by-side single berths with espresso leather bases into a large double berth, supported by four storage drawers and illuminated by two reading lights. A leather-framed mirror amplifies natural light from the picture window with an opening panel, and the cabin is completed by a hanging locker, television and a private en-suite with a stall shower for guest convenience and privacy.

Guest head

This en-suite guest head presents Black Galaxy granite floors and countertops, a Tecma head, a refined wash basin with a designer fixture, a stall shower, storage cabinets and a heated towel rack to ensure comfort and function for guests.

Guest state room (starboard)

Mirroring the port arrangement, the starboard guest stateroom offers two side-by-side single berths with espresso leather bases that convert to a large double berth, four storage drawers and two reading lights. A leather-framed mirror and a picture window with opening panel bring light and perspective, while a hanging locker, television and an en-suite with a stall shower complete this adaptable and comfortable guest retreat.

Guest head (starboard)

The starboard guest head continues the Black Galaxy granite aesthetic with matching floors and countertops, a Tecma head, a wash basin with designer fixture, a stall shower, generous storage cabinets and a heated towel rack, offering the same refined amenities as other guest facilities.

VIP cabin

The forward VIP cabin pampers guests with a king-sized pedestal bed featuring an espresso leather base, headboard and overhead feature, illuminated by two stainless-steel reading lights. Two large under-berth storage drawers, sycamore wood paneling with matte-finish cabinetry, designer-upgraded carpeting throughout, a white leather portside settee and a matte-finish walnut vanity with a white leather chair cultivate a serene sanctuary anchored by a large walk-in closet with a safe for secure storage.

VIP head

The VIP head showcases Black Galaxy granite floors and countertops, a Techma head, a large stall shower, abundant cabinet storage, two wash basins

and a heated towel rack, creating a luxurious and functional ensuite for the forward cabin.

Fly bridge

The flybridge is designed for sociable cruising and gracious entertaining, featuring a U-shaped dining area with a fold-out teak table that seats ten and an L-shaped port-side cabinet concealing a refrigerator, ice maker, stainless-steel sink, electric grill and a pull-out shower hose. Forward to port there is a storage locker and cushioned seating area, and generous sun protection is provided by an opening hard top together with a retractable sun shade to tailor shade and ventilation to the moment.

Fly bridge electronics

At the upper helm control is intuitive and redundant, featuring an MTU engine control panel, a Garmin 24-inch monitor panel paired with two Garmin MFD displays and analog engine gauges. ABT TRAC bow and stern thruster controls, a Sanshin searchlight control panel, ZF single-lever controls and four helm chairs under an opening sunroof complete a flybridge crafted for confident command and comfortable watchkeeping.

Foredeck

The foredeck invites relaxed gatherings with a U-shaped seating area and table, a cushioned sunpad, two storage lockers, two Lewmar anchor windlasses and two dedicated anchor lockers that secure ground tackle and keep operations tidy and ready.

Engine room

Power and systems are engineered for endurance and serviceability, with two 12V 2000 MTU 1950 HP engines and two Kohler 32 kW 60 Hz generators feeding a Dometic chilled water air-conditioning system served by two chillers. Long-range autonomy is supported by an Idromar MC3J watermaker, while safety and maintenance are enhanced by a CO2 fire suppression system, a Marco oil transfer system for engines and gensets, two Dual Racor 1000 fuel filters, a Glendinning cable master and two engine room ventilation fans. Daily systems are aided by a hot water heater, two storage racks, four battery chargers and dedicated engine and house batteries to ensure reliable operation underway.

Crew quarters

Private crew quarters ensure professional operation and comfortable living, with two staterooms offering upper and lower berths plus storage and hanging lockers, a Tecma head with a separate stall shower and sink, and a compact galley with a sink and microwave oven. A separate washer and dryer, an L-shaped settee with table, a refrigerator and a Garmin monitor complete a self-sufficient crew domain designed to support extended service and autonomy.

CONTACTS

Shestakov Yacht Sales is a brokerage company specializing in the sale and service of yachts worldwide. The company offers services for buying and selling both new and used motor yachts, sailing vessels, and luxury superyachts. They also provide yacht registration, insurance, technical maintenance, crew selection, and charter organization services across the U.S., Canada, Latin America, the Caribbean, and the Bahamas.

The founder and lead broker of the company is Andrey Shestakov, a licensed and certified expert with extensive experience in marine engineering and shipbuilding.

The company has an extensive network of partnerships with major yacht manufacturers worldwide and provides services in multiple languages, including Russian, Ukrainian, Spanish, and English. The office is in Dania Beach, Florida, USA.

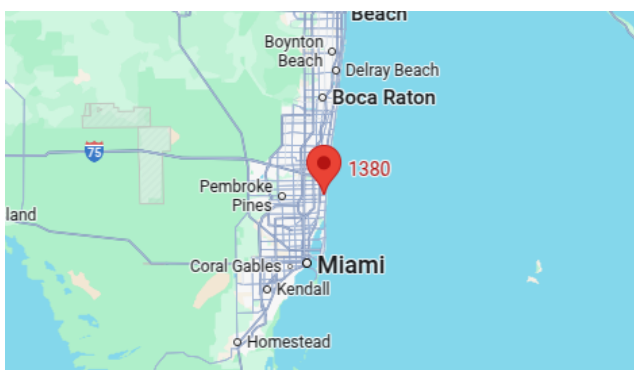
For more information and to view available yachts, you can visit the company's official website: <https://shestakovyachtsales.com>

Contact details

Phone: +1(954)274-4435

Email: andrey@shestakovyachtsales.com

Address



1380 Weeping Willow Way, Hollywood,
Florida 33019