



SHESTAKOV

Yacht Sales

SOUTH C'S - OCEAN ALEXANDER



Builder: [Ocean Alexander](#)

LOA: 88' 0" (26.85 m)

Year Built: 2023

Beam: 20' 0" (6.22 m)

Model: N/A

Min Draft: 19' 5" (5.92 m)

Price: \$7,449,000 USD Subject to change.

Max Draft: 20' 3" (6.17 m)

[See full listing on our website](#)

Location: Naples, United States

Max Speed: 20 Knots (23.02 MPH)

If you would like to buy a yacht **SOUTH C'S - OCEAN ALEXANDER** or would like help answering any questions concerning purchasing, selling, or chartering a yacht, please call **+1(954)274-4435** or click here on <https://shestakovyachtsales.com>

TABLE OF CONTENTS

OVERVIEW 3

SPECIFICATIONS 5

 Basic Information 5

 Dimensions 5

 Speed, Capacities and Weight 5

 Hull and Deck Information 6

 Engine Information 6

GALLERY 7

DETAILED DESCRIPTION 22

CONTACTS 31

OVERVIEW

Ocean Alexander 27R — SOUTH C's — Hull No. 3 presents a modern raised pilothouse profile that marries the comforts of everyday living with abundant storage and a layout engineered for gracious entertaining. The interior is bright and contemporary, with clean lines and an efficient flow designed for extended cruising. Accommodation is arranged as a flexible four stateroom layout supporting a true dual owner arrangement: a primary suite on the deck and a full beam master amidships below, supplemented by two ensuite guest cabins. Every berth benefits from upgraded mattresses for enhanced overnight comfort and reduced noise.

A practical highlight is found in the guest corridor where a dedicated bonus room has been fitted with custom built in shelving, providing exceptional storage capacity that proves its worth on longer voyages. The machinery space is equally well considered, with custom shelving over the starboard engine creating an organized space for tools and spare parts. Aft, crew quarters consist of two cabins capable of accommodating up to four personnel, allowing discreet, professional service.

This 27R is equipped with the new generation pilothouse option that transforms the flybridge into a genuine social deck complete with an outdoor bar—an inviting setting for alfresco dining and sunset cocktails. At the waterline, a glass enclosed beach club with sliding door access enhances the yacht's connection to the sea while offering a climate protected lounge for relaxation or watersports staging. The overall result is a versatile platform that combines private retreats with a guest forward, superyacht style entertaining experience.

Meticulously maintained and offered turnkey, SOUTH C's is presently lying at Ocean Reef Club in Key Largo, Florida. A full bottom service was completed in May 2026; the main engines have logged approximately 700 hours, and the

generators show roughly 983 and 920 hours. Hydraulic systems—including thrusters, windlass, stabilizers, and the swim platform—have been recently serviced, and the exterior has received a professional ceramic coating for lasting gloss and protection. Completing the package are two Sea Doo Spark waverunners with about 10 hours apiece, making this Ocean Alexander an immediately confident choice for those seeking a premium flybridge motor yacht ready for cruising and entertaining.

SPECIFICATIONS

Basic Information

Model Year:
2023

Country:
United States

Year Built:
2023

Dimensions

LOA:
88' 0" (26.85 m)

Beam:
20' 0" (6.22 m)

Min Draft:
19' 5" (5.92 m)

Max Draft:
20' 3" (6.17 m)

Speed, Capacities and Weight

Max Speed:
20 Knots (23.02 MPH)

Water Capacity:
450 Gallons

Gross Tonnage:
163 Pounds

Fuel Capacity:
2906 Gallons

Hull and Deck Information

Hull Material:

Fiberglass and Plastic Yachts

Hull Designer:

N/A

Deck Material:

Fiberglass

Interior Designer:

Evan K. Marshall

Hull Configuration:

N/A

Engine Information

Engines:

2

Engine Type:

Inboard

Manufacturer:

MAN

Fuel Type:

Diesel

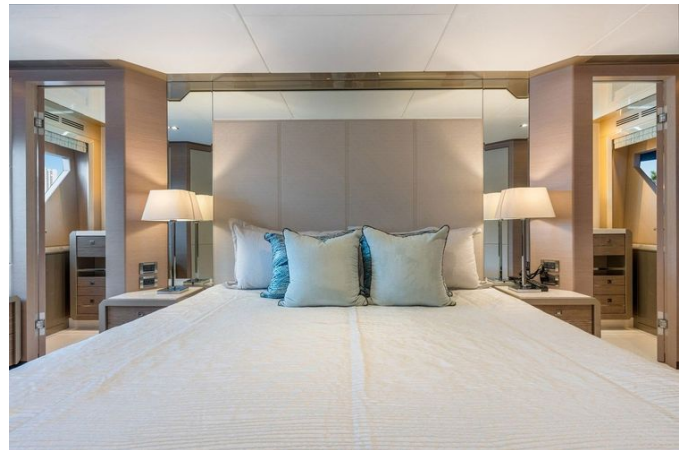
GALLERY



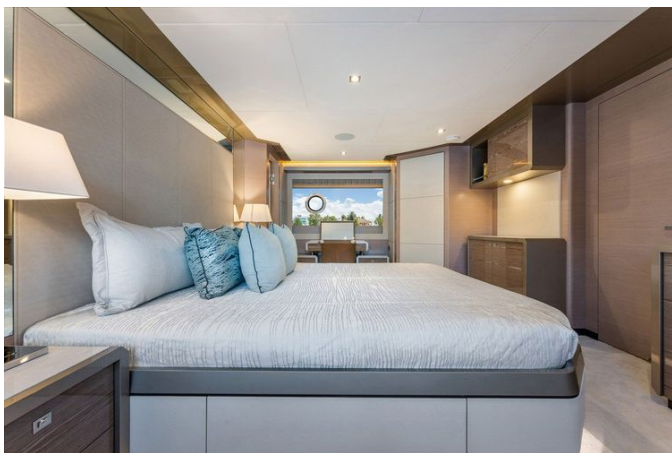






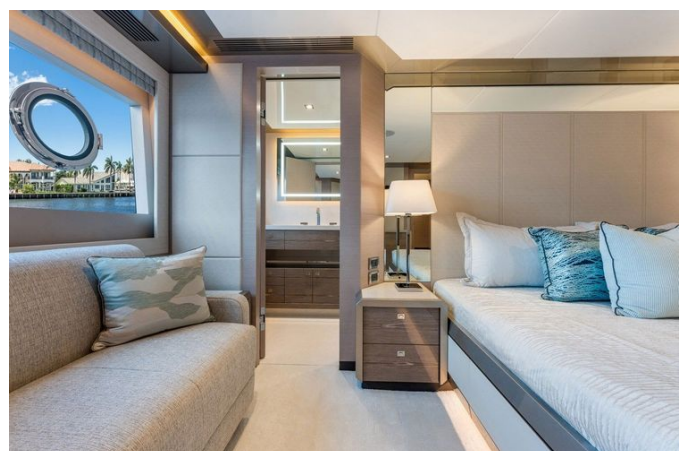


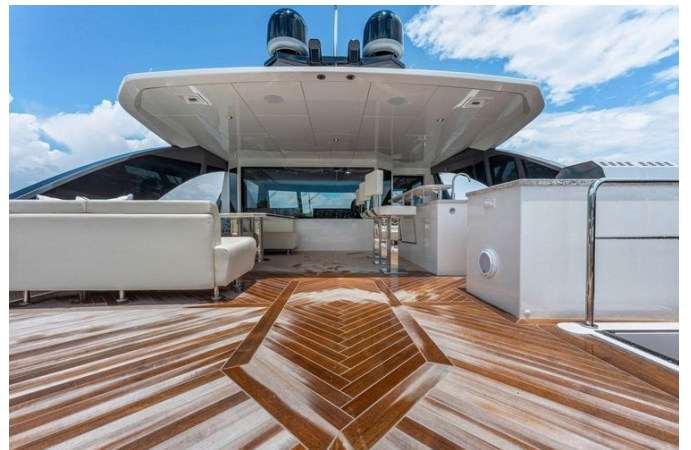




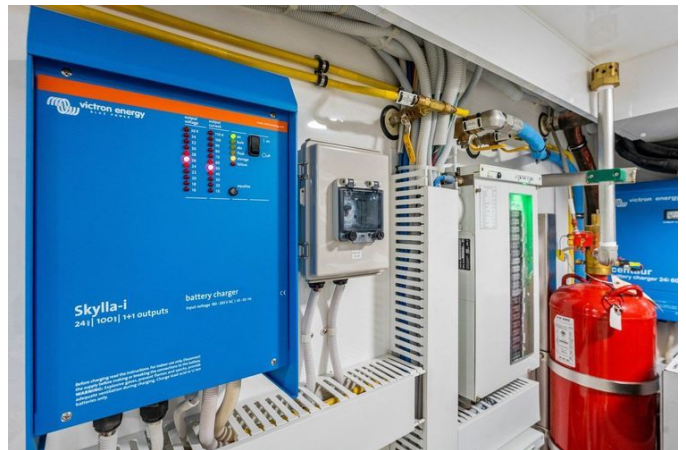


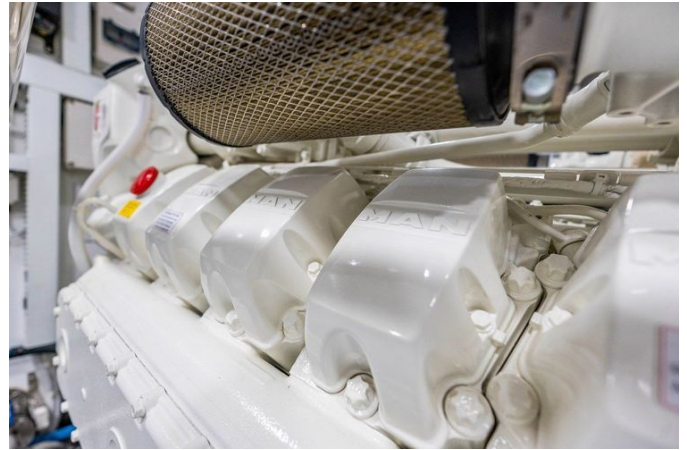














DETAILED DESCRIPTION

Options

Every finish and feature has been chosen to elevate life aboard: two full-height electric glass sliding doors open gracefully while twin electric helm seats provide precise, adjustable comfort for effortless transitions.

Remote-controlled electric shades dress the salon and the windows of the master and guest staterooms, and in-glass portlights—four serving the upper and lower Master Staterooms, one for the starboard guest stateroom and one for the utility room—introduce daylight with refined subtlety. The starboard guest stateroom's side-by-side berths glide together to form a single queen berth, and heated stone floors in both the main-deck and lower-deck Master Staterooms add a discreetly luxurious warmth underfoot.

Critical mechanical and electrical selections support serene handling and extended autonomy: a Thruster/Stabilizers Package, plug-in engine wired remotes provided at the aft deck and the boat deck, and a Headhunter sewage treatment system rated at 600 gallons per day. Freshwater independence is delivered by a Dometic® 1,200 G/day water maker with automatic freshwater flush operation and a commercial pre-filter, complemented by a full water purification package to ensure plentiful pristine supply. A custom extended cruise package, a bespoke mechanical and electrical convenience package, a comprehensive Entertainment System and a considered Spare Parts package further enhance long-range capability and onboard convenience.

Exterior enhancements complete the offering with a four-person Jacuzzi on the bridge deck flanked by sunpads to port and starboard, an Exterior Convenience Package and a Teak Decking Package. A hydraulic Hi-Low swim platform rated to 1,500 lbs with an integrated ladder streamlines water access, while aft-deck transom structural reinforcement prepares the yacht for towing

a tender. Overhead, a custom aft-deck ceiling with indirect lighting creates the perfect ambiance for evening entertaining.

Standard equipment

Designed around a high density closed cell structural foam core, the yacht delivers outstanding thermal and acoustic insulation and is engineered to withstand elevated temperatures, while longitudinal and lateral fiberglass foam core stringers and infusion laminated fiberglass add approximately 20% more strength and reduce hull weight by about 18% compared with traditional hand layup. A reinforced collision bulkhead, strategic cross knit carbon fiber reinforcements in areas of peak stress, and fully watertight bulkheads with dedicated engine room soundproofing combine to create a hull that inspires quiet confidence. Multiple layers of sound and vibration control—reflective, absorptive and dampening materials—are further backed by engineered air pockets and flexible isolation mounts to suppress noise, and exterior finishes receive professional epoxy primers and Alexseal polyurethane to preserve gloss far beyond gelcoat standards; all exterior fittings are specified in 316 stainless steel while aluminum parts conform to marine grade 5086 or 6061 standards. The engine foundation is formed from bespoke stainless steel plates that encapsulate the structural stringers for exceptional support and isolation, and frameless glazing completes the sleek, contemporary profile. Every structural interior element below the waterline is fully bonded to the hull, and the bottom is protected by three anti blister epoxy barrier coats followed by three coats of self polishing antifouling (Seahawk or equivalent). A robust rub rail is finished with a 316 stainless steel striking plate and bronze through hull fittings underscore long term durability in the most demanding conditions.

Propulsion is provided by MAN V12 engines producing 1650HP and covered by the MAN Gold Standard Warranty, which carries sixty months of protection for

principal rotating and structural components including the crankcase, crankshaft, connecting rods and flywheel. Engines are mounted on stainless steel beds with removable stainless side rails to facilitate service access, while Delta T intake and exhaust fans with variable frequency drives ensure vigorous airflow through machinery spaces. Fire damped intake and exhaust ducts feature both manual and automatic actuation tied to machinery shutdown circuits and are protected by Delta T moisture eliminators located at each duct inlet. To limit salt intrusion and extend component life, engine exhaust Delta T fans are roof mounted on the superstructure rather than on the hull sides. Exhaust systems employ aerospace grade autoclave hard coats and AL 6XN alloy spray rings—technology derived from high performance rocket nozzles—to reduce heat transfer and preserve performance, and raw water cooling circuits use a copper nickel 90/10 alloy for superior corrosion resistance and inherent bio antifouling properties. Seakeeping and comfort are managed by a Sidepower Vector Fin, a fifteen square foot hydraulic stabilizer fin providing zero speed stabilization; its patented curved geometry generates lift underway and features active predictive inertia control for up to 50% greater efficiency at anchor and up to 30% improved performance underway compared with conventional flat fins. Maneuvering is assisted by 28.4HP bow and stern thrusters, and the drivetrain is intentionally oversized—shafts, rudders and associated components are specified to a class that exceeds typical market practice to ensure superior handling and longevity. High performance, computer designed and machined Nibral propellers convey power with efficiency, Twin Disc hydraulic steering delivers precise feedback, and stainless steel rudders incorporate sacrificial zinc plates for corrosion protection. Docking is simplified with a plug in, wired engine remote available at both the aft deck and the boat deck. Ground tackle is heavy duty and user friendly: two hydraulic vertical anchor windlasses with foot switch control, two 150 lb anchors each teamed with 200' of chain and secured by stainless high tensile swivels, a hands free

freshwater anchor chain wash to maintain spotless operation, and two 1500W 24V DC motor capstans on the aft deck—each with foot switch control—provide secure handling for lines and tenders.

Environmental control is comprehensive, with a Dometic climate system specified for Extreme Tropical Climates and reverse cycle capability down to 40°F water temperature; refrigerants comply with the Montreal Protocols worldwide, and the engine room benefits from its own dedicated air conditioning. Indoor air quality is enhanced by the Ocean Alexander Clean Air System, which employs nano mesh UV sterilization to eliminate up to 99.9% of bacteria, fungi, mold, viruses, fumes and odors; the ozone free, silent system contains no moving parts and ensures continually fresher air. Extended cruising conveniences include an additional washer and dryer and an extra freezer in the lower utility room. Mechanical and operational efficiency is furthered with a centralized lube oil change system for engines and generators, a Gulfcoast fuel polishing system inspired by the US Military Abrams M1 tank design, compressed air delivered to the engine room and aft deck, a military grade searchlight and spreader lighting for the swim step and boat deck, and comprehensive dimmer control for principal interior and exterior ceiling fixtures.

Connectivity and systems monitoring are provided by a commercial grade 4G SIM capable Wi-Fi router that supports an external 5G internet antenna and a supplied iPad for system supervision and multimedia applications. A curated spare parts package accompanies the yacht, including a bilge pump, LED light, engine and generator filters, wiper blades, touch up paint, fuses, engine manufacturer and generator manufacturer spare parts kits, a float switch, Vimar outlets and GFI protection, and a Vimar switch; a second identical spare parts set is also provided to reinforce operational readiness.

Additional practical and safety features include a heavy duty commercial pantograph windshield wiper with intermittent function and washer, a Buell

heavy duty two trumpet horn, and a Fireboy (or equivalent) engine room fire extinguisher system integrated with automatic engine shutdown. A proprietary dry bilge ventilation arrangement exhausts bilge air to the outside to keep bilges dry and free of mildew, and waste handling is entrusted to a Headhunter sewage treatment system rated at 600 gallons per day.

Plumbing begins with a 316 stainless steel fresh water tank with sight gauge, tested to RINA standards (RINA Pleasure Yachts 2021_Pt. B Ch.1 Sec. 1_5.14.1), supported by a Headhunter fresh water distribution system. Freshwater washdowns are located at the stern and the boat deck, dockside water connection is provided, and two 40 gallon hot water heaters with high density insulation and dual high efficiency elements accelerate water heating by roughly 50%. Potable water capability includes a Dometic 1200G/Day water maker with automatic freshwater flush and a commercial pre filter, and a four stage water purification system: stage one filters city water for rust, large particles and sediment; stage two treats both water maker output and city water to control biofilms and, with the steriliser, maintain biocidal properties within the tank; stage three channels tank water through activated carbon to remove odors followed by a bacteria filter; and stage four employs UV sterilization as a final microbiological barrier. Fuel is stored in marine grade aluminum tanks with sight gauges and high/low level alarms, welded and pressure tested in accordance with RINA standards (RINA Pleasure Yachts 2021_Pt. B Ch.1 Sec4), and fuel tank vent breathers comply with RINA requirements while incorporating an easily cleaned AISI 316 stainless steel gauze that also functions as a flame arrester (RINA Pleasure Yachts 2021_Pt.B Ch. 1 Sec.9_7.1.8).

Electrical architecture centers on an OctoPlex NMEA 2000 based safety and security control suite derived from aerospace practice, enabling remote activation, control and status reporting of all AC and DC breakers. The system continuously monitors every power source for voltage, frequency and amperage irregularities and issues visual and audible alerts, adds enhanced

breaker functions including no load indication and brown out protection, and integrates sensors for main doors, tank levels, bilge conditions and battery current, voltage and temperature. Owners and crew can access security, safety and monitoring functions remotely via Apple iPad or Android devices to operate, view and arm OctoPlex data and navigation systems with push notification capability. Shore power is managed by two CM 8 100 Amp Cablemaster units with 85' cables and Iso boost to mitigate voltage drop, and the yacht is fitted with a lightning protection system.

The navigation package is anchored by a Garmin 8700 Series Black Box interfaced with three 24" touchscreens and a Garmin GRID remote input at the helm chair. A Garmin 25KW open array radar, Garmin GHC20 autopilot, Garmin VHF and card reader, Garmin AID with NMEA GPS, and multiple Garmin marine cameras (two in the engine room and one on the aft deck) provide complete situational awareness, while a KVH TracVision UHD7 satellite TV antenna, a five inch Ritchie compass and an iPad running the integrated Garmin app extend navigational control and display capability.

Entertainment is distributed through an Apple TV system servicing the salon, master stateroom, pilothouse, aft deck, foredeck and boat deck.

Factory installed displays include a 50" LED TV with A/V system and subwoofer in the salon; a 43" LED TV with A/V in the master stateroom; a VIP 43" LED TV with satellite receiver; a 32" LED TV in guest staterooms with satellite receivers as specified; a crew 24" LED TV with satellite receiver; a captain's 32" LED TV with satellite receiver; a 43" flip down TV with speakers on the aft deck; and a second 43" flip down TV with speakers on the boat deck.

Exterior and interior appointments convey yacht quality craftsmanship: Italian door hardware, dramatically styled glazing to maximize light and views, and a hardtop that incorporates a custom removable 316 stainless steel ladder for safe access to navigation electronics. Elliptical 316 stainless steel handrails and stanchions, 316 stainless cleats, a stern flag pole, flush mounted deck

lighting and a side boarding gate emphasize both refinement and functionality. The foredeck is arranged with sun pads and a settee, while the boat deck offers a wet bar with sink and refrigerator and two electric helm seats at the steering station. In glass portlights illuminate the upper and lower master staterooms with four units, the starboard guest stateroom with one unit, and the utility room with one unit. Leisure amenities include a four person jacuzzi on the boat deck served by a dedicated 17KW tankless water heater and flanked by sun pads to port and starboard. A hydraulic Hi Low swim platform rated to 1,500 lbs with an integrated ladder facilitates water access, and the aft deck transom is structurally reinforced per a Froude Friction Evaluation to permit towing a tender based on towing forces for an approximate 45 ft length (13 ft beam), 25,000 lb displacement boat with a capstan (tender not included). Teak decking, a custom aft deck ceiling element with indirect lighting and a full exterior convenience package complete the outdoor experience: sun awnings for the boat deck, bow deck and swim platform that stow in purpose built lockers on custom stainless poles with marine grade mesh fabric; bespoke exterior loose furniture packages with tables for both the boat deck and bow; custom protective canvas for exterior cabinetry and a windshield mesh cover; 316 stainless steel transom gates for child and pet safety; a boat deck hatch; four concealed pop up lights on the bow; a 30" electric barbecue on the boat deck; and seven high output LED underwater lights—three at the stern and two on each side—for a dramatic night time silhouette.

Interiors are appointed for both beauty and usability: the salon features custom furniture, sculpted window mullions and an elegant ceiling treatment, with a stone topped wet bar, sink, refrigerator with ice maker and wine cooler integrated into the cabinetry. Full height electric glass sliding doors replace manual units aft and on the starboard side, and electric shades operate by remote. The pilothouse echoes the salon's custom furnishings, window mullion detailing and ceiling treatments and includes a matching sofa. The dining room is fitted with secure shelf tracks for china, glass and silver and

a fixed eight person dining table adjacent to a day head with sink and storage. The galley is equipped for serious culinary service with painted paneled cabinetry and positive latch doors, stone countertops, a stainless steel sink with pull out faucet, cleverly hidden hinge storage and premium appliances: a 32" Fisher & Paykel refrigerator, a 30" Jenn Air over the range microwave, a 30" Jenn Air electric cooktop, a 30" Jenn Air electric oven, a 15" Whirlpool trash compactor, a 24" ASKO dishwasher, a Whirlpool garbage disposal and a Scotsman Brilliance gourmet clear ice maker producing crystal clear cubes that resist clumping and dilution.

Sleeping accommodations are conceived for serenity and privacy. The on deck master stateroom offers a king size berth with independently coiled his and hers sections to minimize motion transmission, two nightstands with stone tops, a vanity, a starboard walk in closet with a hidden safe, remote electric shades and heated stone floors in the bathroom. The lower deck master mirrors this appointmenting with a king size independently coiled berth, two stone topped nightstands, a vanity, walk in closets on both sides with a hidden safe, remote electric shades and a privacy lockset. The VIP cabin features a queen size innerspring berth with storage below, and the starboard guest cabin includes side by side berths that slide together to form a full queen. Guest suites are finished with nightstands, illuminated hanging lockers, dressing mirrors and privacy locksets. The beach club is arranged for relaxation with an L shaped settee and a cabinet wet bar with sink and refrigerator with ice maker, all climate controlled by a dedicated air conditioning circuit. Each head includes a seamless fiberglass stall shower with a single piece glass door that simplifies cleaning and reduces mildew, low noise extraction fans, Tecma Marine toilet systems, and stone countertops and backsplashes paired with bone china sinks. Crew accommodations are thoughtfully planned with a kitchenette (sink, microwave, cooktop and refrigerator), storage locker, a settee with a foldable table and two crew staterooms—a captain's cabin and a high low bunk cabin; the

captain's cabin also includes an N2KView linked Apple iPad for system diagnostics, alerts and settings, and a private head and shower.

A comprehensive turnkey inventory readies the yacht from day one and includes a safety first aid kit, fenders and lines, a flare kit, throw ring, fire extinguishers and bell, a wheel puller for ship propellers, one sixteen person life raft, two sets of bed linens for all berths with pillows and towels, complete dinnerware and serving pieces, full flatware service, placemats and napkins, an assortment of water, white, red and champagne glasses, galley cookware and pans, and small appliances and utensils such as a toaster, electric mixer, measuring cups, rubber, metal and plastic spatulas, mixing bowls, chef knives, cutting boards, a coffee machine and an iron.

As a signature Ocean Alexander standard, owner support begins with dockside orientation before delivery, during which owner and captain receive comprehensive system operation instruction from OA personnel, and Ocean Alexander maintains 24/7 customer support for owners and crew. Each yacht is delivered with a complete owner's plan package, including a Docking Plan, electrical schematic, equipment information packages, plumbing plan, outboard profile, fuel oil system diagram, freshwater and drain diagram, wastewater system diagram, air conditioning arrangement, owner's manual, documentation for application of tonnage certificate, software and Wi-Fi setup information, and an escape route.

CONTACTS

Shestakov Yacht Sales is a brokerage company specializing in the sale and service of yachts worldwide. The company offers services for buying and selling both new and used motor yachts, sailing vessels, and luxury superyachts. They also provide yacht registration, insurance, technical maintenance, crew selection, and charter organization services across the U.S., Canada, Latin America, the Caribbean, and the Bahamas.

The founder and lead broker of the company is Andrey Shestakov, a licensed and certified expert with extensive experience in marine engineering and shipbuilding.

The company has an extensive network of partnerships with major yacht manufacturers worldwide and provides services in multiple languages, including Russian, Ukrainian, Spanish, and English. The office is in Dania Beach, Florida, USA.

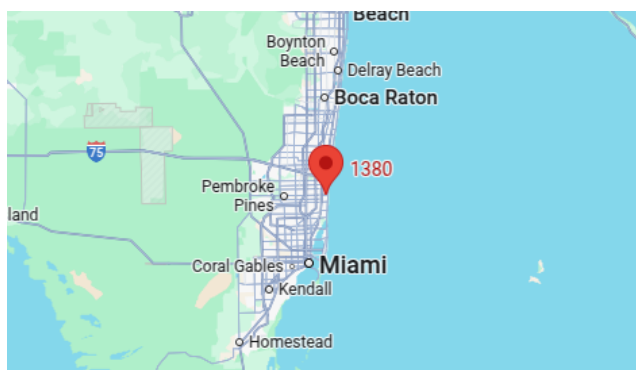
For more information and to view available yachts, you can visit the company's official website: <https://shestakovyachtsales.com>

Contact details

Phone: +1(954)274-4435

Email: andrey@shestakovyachtsales.com

Address



1380 Weeping Willow Way, Hollywood,
Florida 33019