

DOLCE FAR NIENTE - SUNSEEKER



Builder: [Sunseeker](#)

LOA: 88' 0" (26.82 m)

Year Built: 2026

Beam: 21' 0" (6.48 m)

Model: 88 Yacht

Max Draft: 23' 0" (7 m)

Price: \$7,250,000 USD Subject to change.

Cruising Speed: 23 Knots (26.47 MPH)

[See full listing on our website](#)

Location: Palm Beach, United States

Max Speed: 28 Knots (32.22 MPH)

TABLE OF CONTENTS

OVERVIEW	3
SPECIFICATIONS	4
Basic Information	4
Dimensions	4
Speed, Capacities and Weight	4
Accommodations	5
Hull and Deck Information	5
Engine Information	5
GALLERY	6
DETAILED DESCRIPTION	26
CONTACTS	31

OVERVIEW

2026 Sunseeker 88 Yacht, "Dolce Far Niente" is offered in near-new condition after very light use, having been maintained to the highest standards with meticulous servicing and attentive stewardship that is evident throughout the vessel. Her interior showcases a sophisticated two-tone joinery scheme of silver oak paired with smoked eucalyptus, producing a contemporary yet warm atmosphere, while a bespoke décor package elevates the living spaces with timeless refinement and understated luxury. Powered by the flagship twin 2000 hp MTU M96X diesel installation, this flybridge motor yacht delivers exhilarating performance and confident cruising capability, settling comfortably at 22–24 knots to allow effortless, high-speed bluewater passages.

SPECIFICATIONS

Basic Information

Model Year:
2026

Country:
United States

Year Built:
2026

Dimensions

LOA:
88' 0" (26.82 m)

Max Draft:
23' 0" (7 m)

Beam:
21' 0" (6.48 m)

Speed, Capacities and Weight

Cruise Speed:
23 Knots (26.47 MPH)

Water Capacity:
370 Gallons

Max Speed:
28 Knots (32.22 MPH)

Fuel Capacity:
2907 Gallons

Gross Tonnage:
90 Pounds

Accommodations

Total Heads:

5

Crew Cabin:

2

Hull and Deck Information

Hull Material:

Fiberglass and Plastic Yachts

Hull Designer:

N/A

Deck Material:

Fiberglass

Interior Designer:

N/A

Hull Configuration:

N/A

Engine Information

Engines:

2

Engine Type:

Inboard

Manufacturer:

MTU

Fuel Type:

Diesel

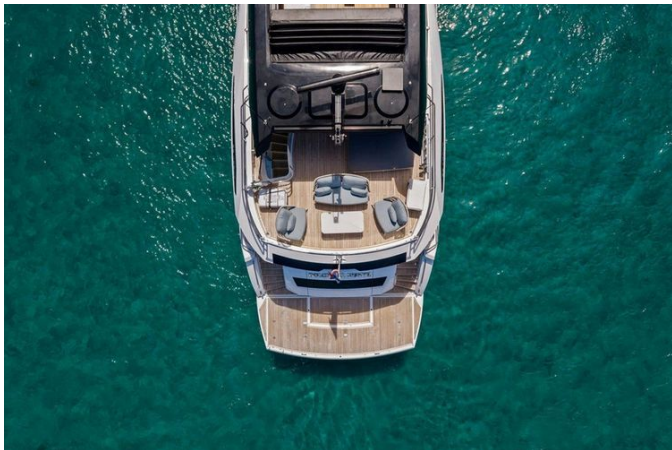
GALLERY









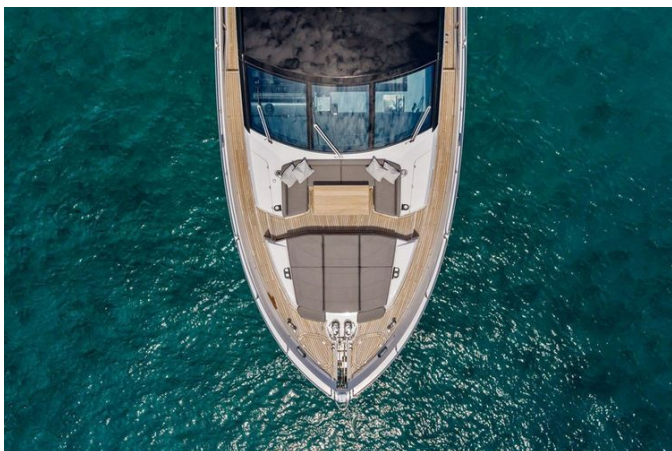




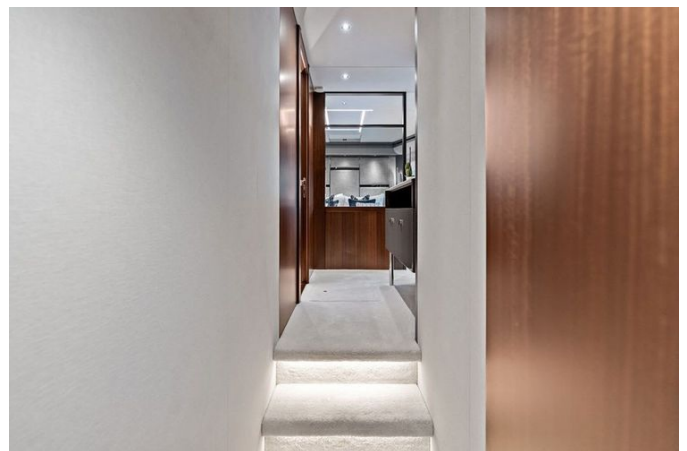
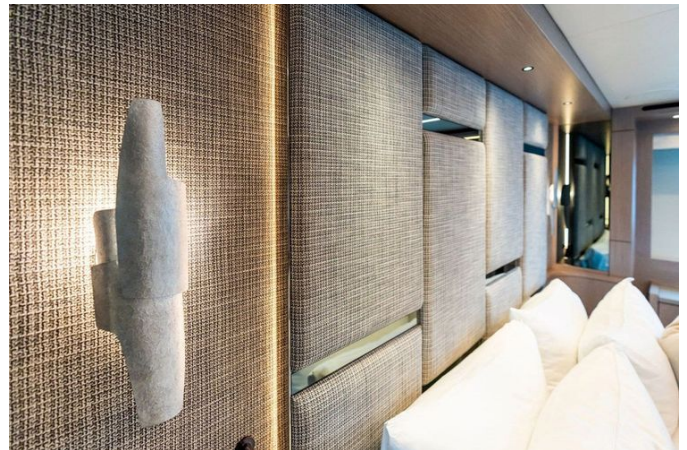
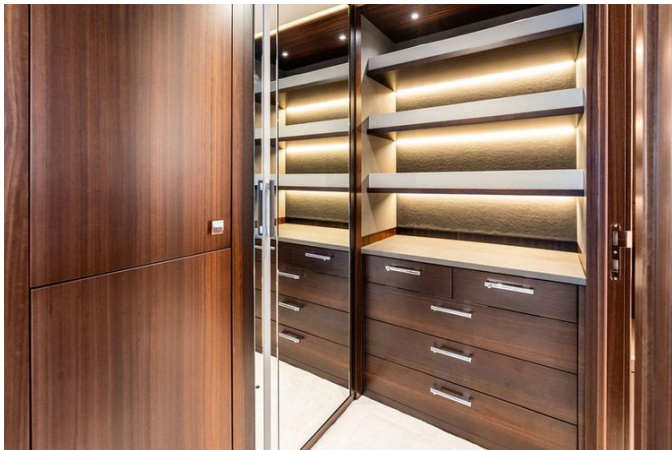




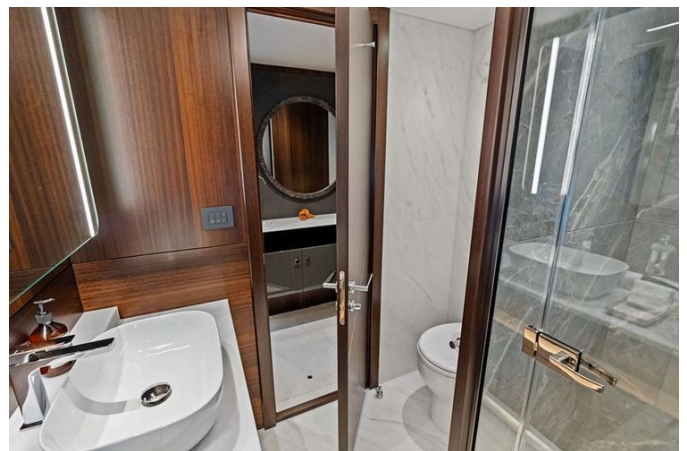




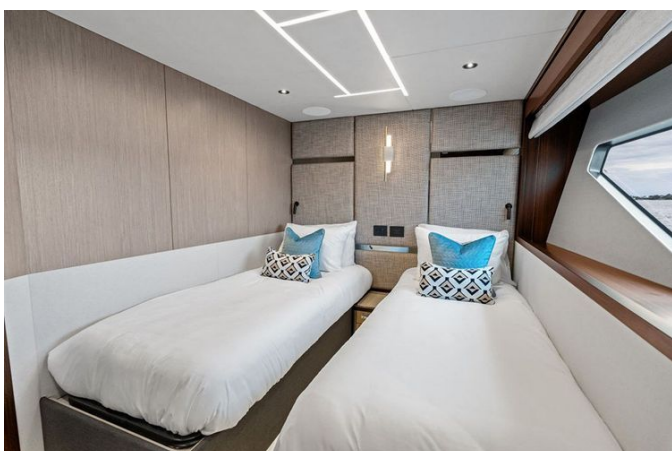






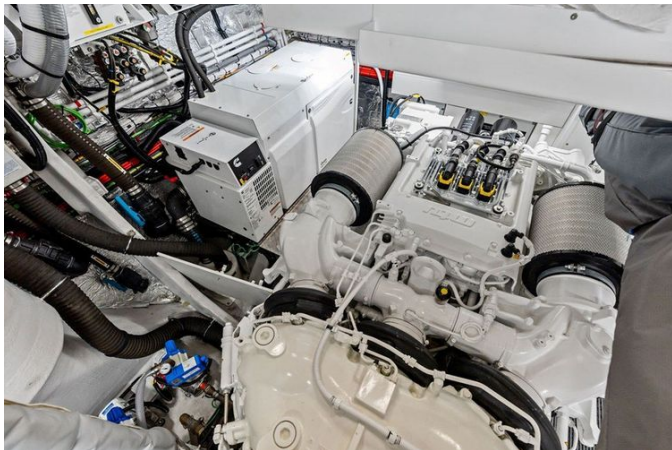














DETAILED DESCRIPTION

Main description

Preliminary listing; trades are welcomed and in-house financing is available. Presenting the 2026 Sunseeker 88 Yacht Dolce Far Niente, offered in essentially like-new condition and lightly used with meticulous, factory-level maintenance that speaks to exceptional care. The interior is beautifully appointed in a two-tone timber scheme of silver oak and smoked eucalyptus, complemented by an upgraded décor package that imparts timeless sophistication and restrained luxury throughout. Propelled by the largest available powerplant, twin MTU M96X 2000HP engines, she delivers confident performance and comfortable cruising at approximately 22–24 knots for effortless passages. A transferable factory warranty remains in effect through July 2027, supplemented by MTU coverage and residual component warranties to provide valuable peace of mind. The 88 Yacht is celebrated for its dramatic exterior lines, extensive alfresco living zones and superb build quality, offering a flexible layout suited to both entertaining and extended cruising with a voluminous full-beam master stateroom, an elegant VIP, generous guest cabins, abundant natural light and the desirable optional main deck day head. Onboard comfort is assured by a Zero Speed fin stabilization system that improves comfort underway and at anchor, tropical air conditioning for reliable climate control, and precise handling from powerful hydraulic bow and stern thrusters. The expansive flybridge is designed as the ultimate social destination with a hardtop, retractable canopy and extended sunshade, refined teak decking and a fully equipped wet bar featuring dual refrigerated drawers. A premium galley with additional under counter refrigeration supports extended stays, while a sophisticated dimmable lighting scheme sets the ambiance throughout the yacht; performance and style details include a

carbon fiber companionway hatch and sprung mattresses in all staterooms and cabin beds. Bespoke interior finishes showcase smoked eucalyptus and silver oak, helm stations are enhanced by an upgraded Garmin navigation package, and entertainment is turnkey with Samsung 4K TVs, Sonos audio and Apple AirPlay, complemented by a dramatic dual color underwater lighting system for evening ambiance. Systems for long-range independence and pristine water quality include a watermaker and Spot Zero System, further enhanced by a Spot Zero watermaker with a dockside water purification connection, and connectivity is state-of-the-art with Starlink satellite internet supported by a high-performance dish. Practical enhancements include an additional Vitrifrigo ice maker installed in the port-side cockpit cabinet, a comprehensive fuel polishing system and accommodations for a crew of four. Protection and longevity measures have been applied throughout, with PPF on interior and exterior high-touch painted surfaces, solar control film on the galley and lower helm windows to reduce heat gain, carpet protectors for the salon, stairs and lower deck hallway, and a Sunbrella cover for the saloon dining table; safety is addressed with an eight-person offshore liferaft mounted on the flybridge aft deck. Turnkey and ready for immediate enjoyment, Dolce Far Niente represents a rare opportunity in today's market. Not for sale to US citizens while in US waters.

Electronics

The primary helm has been appointed with sophisticated navigation and systems management to make operation effortless and precise: two Garmin 8622 multifunction displays paired with a Garmin Fantom 126 6 ft open array radar sit at the core, complemented by a Garmin GHC50 autopilot, VHF radio, Garmin GSD25 sonar and a Garmin GT51m THP transducer, with AIS 800 integration for enhanced situational awareness. Comfort and convenience are woven into the console through a powerful searchlight, a Fusion entertainment

head unit, MAN engine displays and MAN throttles with engine start/stop functionality, bow and stern thrusters for pinpoint maneuvering, an iPhone charging station, recessed cup holders, discrete A/C ducts, and a Sunseeker CM8 power management display to monitor systems with confidence.

Up on the flybridge the navigation suite is faithfully mirrored for effortless command aloft, featuring two 8612 multifunction displays alongside a Garmin VHF, a searchlight and a Fusion head unit, with engine start/stop, MAN engine displays and MAN throttles, bow and stern thrusters, an iPhone charger, convenient cup holders and two dedicated helm seats, creating a refined and fully equipped station for comfortable, confident cruising.

Description

The interior presents a quietly sumptuous atmosphere, beginning with a convenient day head on the main deck and a sophisticated material palette that pairs smoked eucalyptus in a high-sheen satin with silver oak in an open-grain satin. Timber flooring delineates the dining area, while a bespoke galley island—extended forward and finished in Umbra Grey lacquer with a Silestone worktop—provides both practicality and refined style, complemented by an overhead storage unit. The rectangular dining table is appointed with a smoked eucalyptus top and a stone insert, and window treatments combine electric blinds in the salon and dining areas with manual curtains as standard unless otherwise specified, plus an electric curtain for the aft patio door. Upgraded gloss white lacquer headlining panels lift the ceiling plane, and luxurious carpeting flows through the salon, stairs and guest cabins; upgraded dining chairs, elevated interior fabrics and enhanced bathroom finishes complete the curated environment.

Sleeping accommodations are appointed for comfort and security, with a safe installed in the master owner's suite and key locks fitted to the master and forward VIP cabins for added privacy. The port guest cabin features sliding

berths that convert to a double, and bedding is supplied for both single and double arrangements. Practical crew amenities include a mess area equipped with a Miele washing machine and tumble dryer to support extended voyages. Exterior living is designed for effortless transition between indoor and outdoor spaces, with a starboard-side sliding door opening directly to the main saloon and fixed aft-deck seating arranged around a dedicated dining table. The foredeck provides a relaxed lounge with cushions and a folding sunbed, while the flybridge is a showpiece with a spray-finish wet bar topped by a raised, LED-illuminated bar surface and a stainless steel BBQ. A parasol supported by twin deck sockets and upgraded Sunbrella exterior upholstery add comfort and elegance to alfresco moments, and protective cover packages for the foredeck and flybridge, aft cockpit covers and an electrically operated cockpit privacy screen ensure the yacht remains well protected when required.

Anchoring and mooring equipment are robust and ready for confident operation, featuring twin Lewmar V8 windlasses (24V) with a manual brake and chain stopper, Lewmar claw anchors of 80 kg and 50 kg, and two additional stainless anchors supplied with stainless chain. Command at the helm is intuitive, with a docking station that provides comprehensive engine and thruster controls, MTU twin-lever engine controls with start/stop panels and Sleipner proportional controls for both bow and stern thrusters.

Systems have been specified for reliability and convenience, highlighted by an integrated power management system with a touchscreen display and a backup freshwater pump system. Hot water capacity is augmented by an additional 200 L tank, the grey water system has been upgraded with a larger tank and multiple discharge options, and a water maker pre-installation is provided alongside a secure storage cage in the engine room for spare equipment.

Entertainment and operational monitoring are comprehensively addressed, with Samsung televisions positioned in the salon, master and all cabins, Apple

TV with AirPlay functionality and a Sonos system powering Sonance speakers across every zone. A salon subwoofer enriches the music experience while multi-zone audio serves both interior and exterior spaces; the crew area is equipped with its own TV and a Fusion audio system. Vessel control is made effortless via a dedicated tablet, and additional finishing touches include dual-color underwater lights and CCTV coverage of the engine room and aft view. Preparations for future enhancements are already in place with pre-installation for a flybridge crane and a flybridge spa tub, each provided with the necessary power, water and drainage provisions.

Tenders

Included aboard is a Williams Jettender 439 Sport Jet, a high-performance tender that delivers lively acceleration for effortless, rapid guest transfers and exhilarating watersports excursions.

Disclaimer

This vessel is not available for sale to U.S. citizens while located in U.S. waters. The specifications and descriptions supplied for this yacht are presented in good faith; however, no assurances or warranties are made as to the accuracy of the information or the vessel's condition. Prospective purchasers are encouraged to instruct their own brokers or surveyors to verify any details they deem important. The offering is subject to prior sale, alteration of price, or withdrawal without notice.

CONTACTS

Shestakov Yacht Sales is a brokerage company specializing in the sale and service of yachts worldwide. The company offers services for buying and selling both new and used motor yachts, sailing vessels, and luxury superyachts. They also provide yacht registration, insurance, technical maintenance, crew selection, and charter organization services across the U.S., Canada, Latin America, the Caribbean, and the Bahamas.

The founder and lead broker of the company is Andrey Shestakov, a licensed and certified expert with extensive experience in marine engineering and shipbuilding.

The company has an extensive network of partnerships with major yacht manufacturers worldwide and provides services in multiple languages, including Russian, Ukrainian, Spanish, and English. The office is in Dania Beach, Florida, USA.

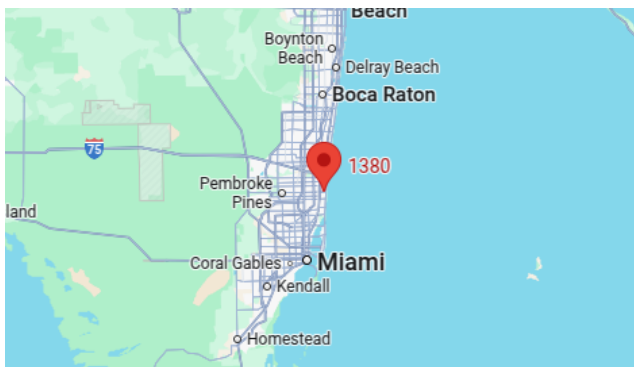
For more information and to view available yachts, you can visit the company's official website: <https://shestakovyachtsales.com>

Contact details

Phone: +1(954)274-4435

Email: andrey@shestakovyachtsales.com

Address



1380 Weeping Willow Way, Hollywood,
Florida 33019