

BELLA TU - HORIZON YACHTS



Builder: [Horizon Yachts](#)

LOA: 90' 0" (27.46 m)

Year Built: 2019

Beam: 23' 0" (7.09 m)

Model: FD87

Max Draft: 18' 7" (5.67 m)

Price: \$6,300,000 USD Subject to change.

Cruising Speed: 15 Knots (17.26 MPH)

[See full listing on our website](#)

Location: N/A, The Bahamas

Max Speed: 20 Knots (23.02 MPH)

TABLE OF CONTENTS

OVERVIEW 3

SPECIFICATIONS 4

 Basic Information 4

 Dimensions 4

 Speed, Capacities and Weight 4

 Accommodations 5

 Hull and Deck Information 5

 Engine Information 5

GALLERY 6

DETAILED DESCRIPTION 15

CONTACTS 26

OVERVIEW

Poised in the turquoise embrace of The Bahamas, this 2019 luxury motor yacht pairs contemporary poise with purposeful capability. Spanning an impressive 90 feet with a generous 23-foot beam, her advanced fiberglass-composite construction delivers a quiet, confident ride while granting remarkable interior volume for refined living. Sunlight pours through expansive glazing into a sophisticated salon designed for effortless entertaining, flowing naturally to formal dining and a chef-friendly galley where convivial moments linger. Private accommodation is thoughtfully arranged across multiple en-suite staterooms, complemented by an exceptional total of seven heads for ultimate comfort and privacy. Discreet service is assured in dedicated crew quarters with two cabins for a professional three-person team, allowing guests to savor every moment in unhurried luxury.

Underway, twin MTU diesel inboards provide the poised thrust enthusiasts expect of premier motor yachts, delivering a smooth 15-knot cruise and up to 20 knots when the horizon calls. With a robust 3,480-gallon fuel capacity and 400 gallons of fresh water, she invites extended island-hopping across the archipelago with serene self-assurance. Outdoor living unfolds in inviting open-air lounges from the aft deck to the elevated bridge area, where gentle trade winds, endless views, and relaxed conversation define the rhythm of the day. As a sleek, modern expression of the fiberglass motor yacht ethos—built and launched in 2019 and perfectly positioned in the Bahamas—she offers a beguiling blend of performance, space, and polish, equally at home gliding between secluded anchorages or hosting elegant evenings beneath the stars.

SPECIFICATIONS

Basic Information

Model Year:
2019

Country:
The Bahamas

Year Built:
2019

Dimensions

LOA:
90' 0" (27.46 m)

Max Draft:
18' 7" (5.67 m)

Beam:
23' 0" (7.09 m)

Speed, Capacities and Weight

Cruise Speed:
15 Knots (17.26 MPH)

Water Capacity:
400 Gallons

Max Speed:
20 Knots (23.02 MPH)

Fuel Capacity:
3480 Gallons

Accommodations

Total Heads:

7

Crew Berths:

3

Crew Cabin:

2

Hull and Deck Information

Hull Material:

Fiberglass and Plastic Yachts

Hull Designer:

N/A

Deck Material:

Fiberglass

Interior Designer:

N/A

Hull Configuration:

N/A

Engine Information

Engines:

2

Engine Type:

Inboard

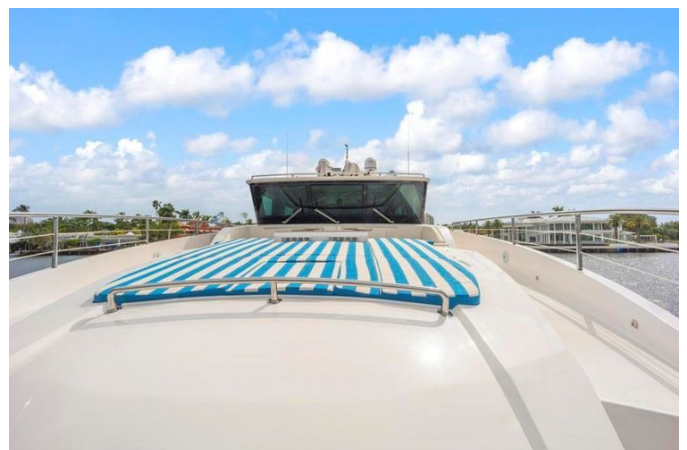
Manufacturer:

MTU

Fuel Type:

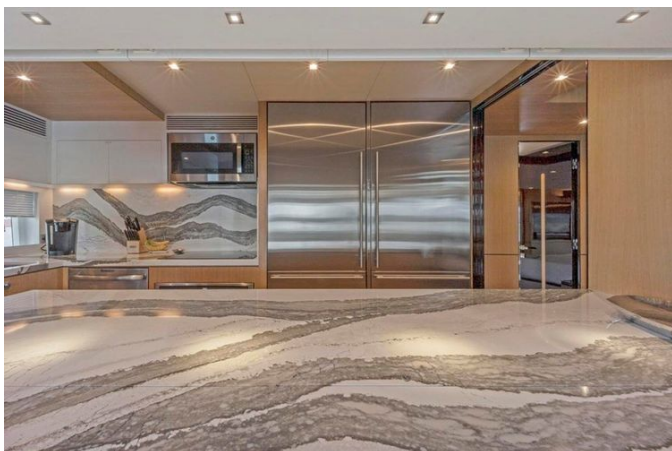
Diesel

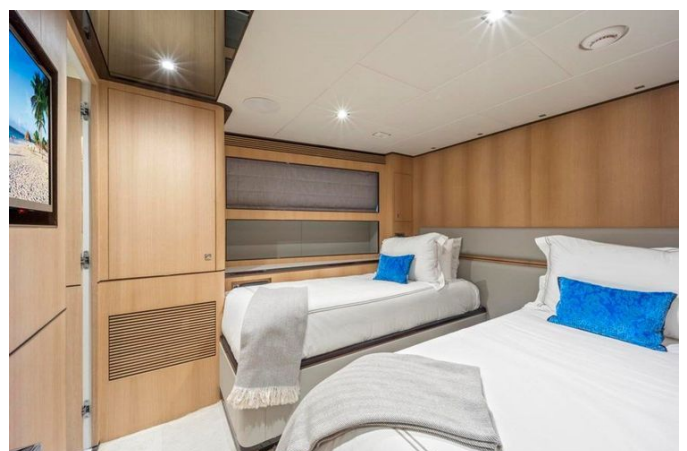
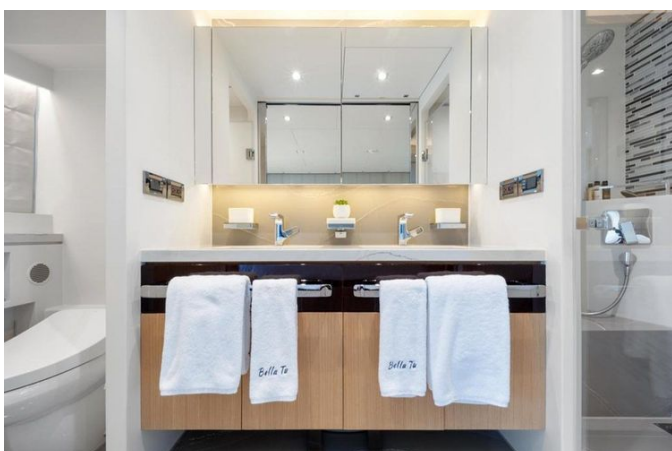
GALLERY

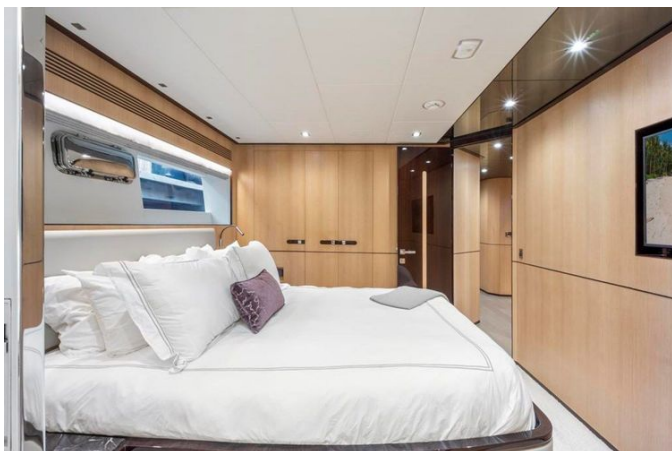




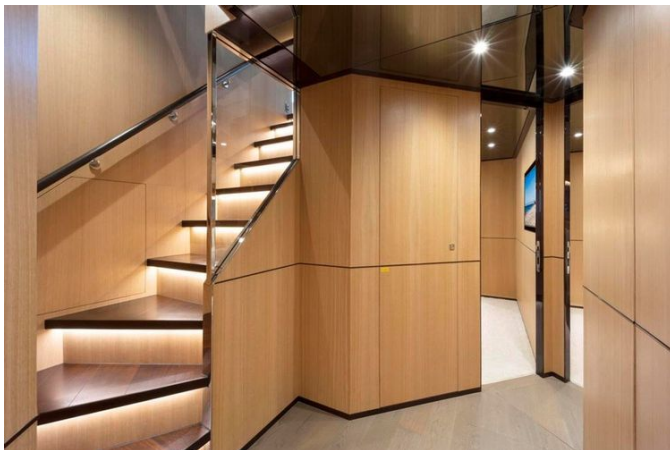














DETAILED DESCRIPTION

Overview

Presenting BELLA TU, a 2019 Horizon FD87 that has been professionally and meticulously maintained. She welcomes guests with a spacious aft deck designed for effortless entertaining, featuring informal dining, a wet bar, and an interior dayhead positioned just inside the salon door. Forward of the salon, formal dining can be arranged for eight guests, or discreetly stowed to reveal a set of breakfast bars, each seating four. An enclosable galley empowers the crew to transition seamlessly from buffet-style service to a closed-off galley for more formal occasions.

A hallmark of her layout, the on-deck master grants the owner easy, direct access to a private sanctuary while ensuring separation from guests and crew when desired. Below, four ensuite staterooms provide comfortable accommodations for all aboard. In the skylounge, three Stidd chairs are situated at the helm station, complemented by a desk, settee, pop-up TV, and a dayhead.

The boat deck extends the social scene with a settee and a walk-around bar with four fixed barstools, paired with a propane grill and additional tender storage. Forward on the bow, the enjoyment continues with more seating and dedicated fridge space. A full beach club with a garage door transforms into a serene waterside lounge while at anchor and serves as an excellent crew area when closed off.

Power comes from twin 1,600 hp MTUs supported by dual Onan 29 kW generators. BELLA TU is in extremely good condition and is a must-see.

Highlights features and upgrades

Meticulously upgraded for effortless cruising and confident passagemaking, this yacht features a Spot Zero MTZ Series II double-pass system installed in July 2021, complemented by FLIR thermal imaging added in November 2021 and a Yacht Controller commissioned in January 2022. Essential onboard systems include a Headhunter sanitary treatment system, a hydraulic Steelhead davit SM2000, and a Sea Recovery water maker delivering 1,400 gallons per day. Ride quality and maneuverability are elevated by ABT zero speed stabilizers and an ABT hydraulic bow and stern thruster, all seamlessly overseen through a Maretron control and monitoring system. Shore side and utility capabilities are fortified by a 100-amp shore power system, a Reverso fuel polishing system, a UV water filtration system, and a hydraulic Hi/Lo swim platform.

Hull general specifications

The hull presents ABS/DNV type-approved fiber/resin construction with sandwich core material, finished in a pristine white gelcoat. A one-piece, cored lamination integrates a deep skeg and longitudinal girders, while the hull, deck, and superstructure are engineered using 3D VARTM infusion to heighten strength and reduce weight. High-density foam coring is employed throughout the hull bottom as well as the hull sides, decks, and superstructure, complemented by stringers with high-density foam coring that are bonded during layup to enhance structural rigidity and strength. All interior structural components are meticulously bonded to the hull, and a strong collision bulkhead adds an extra margin of safety. Below the waterline, International anti-fouling bottom paint with anti-osmosis treatment works in concert with PropSpeed/PropGold metal coating on underwater appendages, while tunnels help reduce draft. The bow profile features HPPB (High Performance Piercing

Bow) for confident running and efficiency.

Decks

Purposeful design and refined finishing define the decks, where a non-skid forward deck and side decks inspire confidence underfoot and a heavy-duty stainless-steel 1 3/4" handrail with 1-1/2" stanchions and steel cable ensures secure passage. Frameless windows elevate the profile and the experience alike, with a windshield in tinted Low-E tempered glass and side windows in tinted tempered laminated glass. At the bow, serious ground tackle underscores bluewater intent: two high-tensile 1/2" 300 ft anchor chains monitored by two Maxwell AA560 chain counters work in concert with two Maxwell VWC3500 windlasses and two stainless-steel 100 kg anchors, all serviced by a freshwater/seawater anchor chain washdown.

Forward leisure is equally considered, with a Portuguese bridge featuring U-shaped seating and sun pads as per the layout, complemented by a cabinet at the forward settee that houses a refrigerator with freezer and icemaker. Sunshades at the foredeck and pop-up lights beside the sunpad create a private retreat from day to night. Movement around the yacht is seamless via wing doors to the port and starboard side decks, two integrated stairs from the aft deck to the upper deck, and two FRP aft bulwark side-boarding doors. Shore access is made effortless by Marquipt aluminum seven-step side-boarding sea stairs with dedicated aft storage.

A teak aft deck, matching teak steps, and a teak swim platform set a warm, yachting tone, accessed through a self-locking stainless-steel sliding door to the main salon. The space is tailored for entertaining with custom aft-deck seating and a table arrangement, an aft-deck minibar featuring a sink, refrigerator, and lockers beneath the stairs, and an electric folding TV cabinet with a Samsung 43" LED TV. Immersive ambiance comes courtesy of a Fusion Marine Stereo with speakers, while practical seamanship is supported by two

aft-deck corner fairleads and two Maxwell VC2500 capstans.

Beach club

A hydraulic door with a pantograph door in the middle opens to a refined waterside retreat, where a hydraulic hi/lo swim platform with a 2,000-pound capacity and removable rails provides effortless access to the sea. Thoughtfully arranged for relaxation and entertaining, the space features a sofa seat with a table and a well-equipped bar with a sink and a fridge/freezer.

Skylounge and boat deck

The skylounge is thoughtfully designed for both command and comfort, featuring a dinette, dayhead, and desk, with three STIDD helm chairs at the helm for confident passage-making. A Samsung 43-inch Hi/Lo TV pairs with electric Roman blinds to set the mood at a touch, while a custom-designed helm places a full suite of engine gauges, a monitoring system for vital equipment, fuel and water gauges, a Ritchie Supersport magnetic compass, a surveillance camera system with PTZ cameras for the aft deck and engine room, a bilge pump panel, and navigational lights within effortless reach. Entertainment is elevated by the Bose SoundTouch 130 home theater system, complemented by a Samsung Blu-ray player and Apple TV.

Outside, the non-skid boat deck is engineered for secure movement and smart functionality, encircled by removable stainless-steel rails and serviced by oversized corner drains with strainers and internal overboard discharge. Gather around the custom L-shaped boat deck dinette and table, or the two-level bar with stainless-steel bar stools, sink, fridge, and icemaker, all shaded as needed by a sunshade for the boat deck area, per layout. Culinary moments come easy with the Hi/Lo 24-inch propane BBQ housed in a durable FRP cabinet. The radar arch with antenna bracket forms a purposeful

silhouette, supported by two hatches on the hardtop, two Tokai Sanshin search lights, and Buell air horns atop the arch. Handling tenders and toys is effortless with the hydraulic Steelhead SM2000 davit, while four floodlights illuminate the mast and boat deck when day turns to night. A Fusion Marine stereo system with speakers enriches the ambiance, and an MTU wired remote plug-in provides added operational convenience.

Interior decor and equipment

Guest accommodations comprise an on-deck master stateroom, a forward VIP cabin, port and starboard queen cabins, and a twin guest room, all en suite. The crew area provides two staterooms, a full head, and a dedicated crew galley and dinette, with convenient access from the aft deck and the transom. The primary joinery is American Oak finished to a seventy percent gloss and highlighted by high-gloss Wenge accents, while Fabrica carpet softens all guest staterooms. The main salon, dining area, galley, and skylounge feature Oak Arizona flooring, with guest stairwells appointed in Rosewood. All heads are fitted with Cambria quartz countertops and flooring. Practicality meets luxury with stacked GE washer/dryer units located in the guest and crew companionways, a total of two.

Salon

Anchored by a leather L-shaped sofa paired with a coffee table and chair, the salon exudes contemporary comfort atop a custom area rug. To starboard, two leather chairs and a table create an inviting conversation nook, while a custom folding dining table with ten hi-lo chairs adapts effortlessly for dining or bar-height seating. Natural light and easy deck access are welcomed by a sliding door to starboard and a single opening door to port, complemented by electric single treatment curtains for instant privacy. A dayhead is thoughtfully

positioned within the main salon. Entertainment is cinematic, with a 55-inch LED TV powered by a Bose Lifestyle 650 home theatre system, a Bose Omni Jewel satellite radio system, a Samsung Blu-ray player, and Apple TV. Forward, the space transitions seamlessly to the galley.

Galley

The galley is appointed with Cambria quartz countertops and floor, anchored by a full-height Sub-Zero refrigerator and freezer clad in stainless steel paneling. A GE cooktop, oven, and range pair with a GE dishwasher and trash compactor to streamline meal preparation, while a stainless steel sink with GE disposal adds practical refinement. Entertaining is elevated by a U-Line wine cooler and a full-height pantry for generous provisioning. For versatile living, a Hi/Lo screen and privacy doors allow the galley to be fully enclosed, and an opening porthole on the port side ushers in fresh sea air.

Master stateroom

Designed as a private retreat, the master stateroom features a 50-inch Samsung LED TV integrated with a Bose SoundTouch 130 home theatre system, complemented by a Samsung Blu-ray player and Apple TV for seamless entertainment. A king bed with storage drawers and nightstands provides abundant stowage, while a lounge chair to port and a dedicated desk to starboard create inviting spaces to unwind or work. Natural light and privacy are managed by electric Roman shades, and wardrobe needs are met by a walk-in closet plus two hanging lockers to port and starboard. The ensuite head is appointed with dual sinks and a shower featuring an opening porthole, and an additional opening porthole on the starboard side enhances ventilation and views.

VIP stateroom forward

The forward VIP stateroom pampers guests with a queen-size berth flanked by nightstands and complemented by generous storage drawers, while a large hanging locker to starboard keeps attire impeccably organized. An en suite head with sink, shower, and toilet ensures privacy and comfort. Entertainment is elevated by a forty-inch Samsung LED TV and a Fusion stereo system with speakers, creating a refined retreat at sea.

Guest stateroom port

Thoughtfully appointed, the port guest stateroom features a queen bed with integrated storage drawers and nightstands, complemented by large hanging lockers to accommodate extended-cruise wardrobes. An ensuite head provides a sink, shower, and toilet for complete privacy and comfort. Entertainment is assured with a 40" LED TV and a Fusion stereo system with speakers, creating a refined retreat for discerning guests.

Guest stateroom starboard

This inviting starboard guest stateroom features a queen bed with integrated storage drawers and nightstands, complemented by large hanging lockers for ample wardrobe space. An ensuite head with sink, shower, and toilet provides complete comfort and privacy, while entertainment is assured by a 40-inch LED TV and a Fusion stereo system with speakers.

Twin guest stateroom

Thoughtfully appointed, the twin guest stateroom features sliding twin beds that reconfigure with ease, complemented by a hanging locker for organized

stowage. An ensuite head with sink, shower, and toilet enhances privacy and comfort. Entertainment is elevated by a 40-inch Samsung LED TV and a Fusion stereo system with speakers, creating a refined retreat for family or friends.

Crew quarters

Thoughtfully appointed for comfort and efficiency, the crew quarters feature a captain's cabin with a double bed and a single bunk cabin with a Pullman, served by a head with sink, shower, and toilet. A dedicated crew mess provides a refrigerator and freezer drawer with icemaker, a dinette with table, a GE microwave, and a Kenyon cooktop, all complemented by a 32" Samsung LED TV. Entertainment is enhanced by a Fusion Marine stereo system with speakers serving the beach club and crew mess, the captain's cabin, and the bunk cabin. Practicality is assured with a stacked washer and dryer.

Electronics and navigation

Seamless connectivity and precision navigation define the onboard experience, with Skylink equipment included, a TV antenna poised atop the radar arch, and a KVH TracVision HD7 paired with a KVH TracPhone V7-IP, complemented by an empty dome with SAT phone pre-wire for future expansion. Wave wifi with Pepwave 4G keeps you online, while five Panasonic PBX telephones with intercom feature and an exterior connector for shore phone and cable TV ensure effortless communication at sea and at the dock. Command and situational awareness are delivered by a Garmin GMR 1226 72" 12kW 72nm open array radar system paired with a GMR Fantom 4 solid-state open array and pedestal, all displayed across four Garmin GPSMAP 8624 24" multifunction displays and supported by two Garmin GPS 19x NMEA units, an MBB300C for inputting Maretron info to Garmin, and a GXM satellite weather antenna. Confident voyage management comes via two Garmin VHF 210 radios, a

Garmin AIS 600, a Garmin autopilot control unit, and a Garmin instrument display with wind transducer and a depth, speed and temperature transducer, while fish and bottom detail are revealed by a Garmin GSD 25 with an Airmar fishfinder.

Engine and propulsion

Power comes from twin MTU 10V2000M96L 1,600 HP engines showing 2,072 hours each as of April 2024, freshly cared for with the two thousand hour service completed in November 2023. Fuel is carried in three tanks feeding stainless steel Aqualoy 22HS shafts that drive high performance S class five blade propellers, supported by main and intermediate bronze struts with backing plates and protected by shaft and rudder packing glands fitted with Tides Marine seals. Precision handling is assured by the Teleflex Seastar Steering System working a stainless steel rudder with zinc plates, complemented by a stainless steel emergency tiller housed in the rudder cabin. Comfort and control at any speed are elevated by the ABT Zero Speed Stabilizer (370/16X) and hydraulic ABT bow and stern thrusters rated at 45 HP each. The engines breathe through a Delta T engine room ventilation system, while an underwater exhaust with bypass mufflers and dedicated anti noise treatment keeps operation smooth and quiet. Robust engineering details include engine mounts on a stainless steel engine bed bonded to the FRP hull girder and Bennett heavy duty trim tabs with indicators to fine tune running attitude. The engine room is finished to a superior standard with an insulated door, a clean, lightweight Tubus Bauer honeycomb floor, stainless steel overhead grab rail on each side of the engines, LED ceiling lights and additional LED lighting beneath the engines, and an engine alarm system for low oil pressure and high water temperature. Added convenience and capability come from a Bauer dive compressor, a Swan air compressor, a central vacuum cleaner, and air conditioning in the engine room.

Mechanical systems

Engineered for seamless performance and comfort, the yacht features chilled-water Marine Air air-conditioning. Fuel management is precise and reliable with fuel tanks fitted with sight and electrical gauges, MTU-supplied fuel filters/water separators on each engine, dual Racor 75/500 MA fuel filters—one on each generator—two electric fuel transfer pumps, a Reverso FPS210 fuel polishing system, and an oil-change pump system serving the engines, gears, and generators.

Freshwater capacity is assured by a 400-gallon FRP water tank complemented by a Sea Recovery AQM watermaker producing 1,400 gallons per day. Domestic supply is driven by a high-volume Headhunter AC pressure pump with a backup DC pump, safeguarded by freshwater charcoal filters in the main supply pipe and in the galley, and supported by a freshwater hose for filling the engine and generator expansion tank and marine-grade lines throughout. Hot water is delivered by two 30-gallon water heaters and a hot-water circulation pump. Sanitary systems include the Headhunter Bravo toilet system and a Headhunter sanitary waste treatment system feeding a 200-gallon holding tank with macerator pump and a 100-gallon sump tank, with a sump pump system for grey water and electric level indicators for both the holding tank and the sump tank.

Bilge and safety provisions are comprehensive, with five electric Rule bilge pumps supplemented by two manual bilge pumps in the engine room and forward staterooms, a high-water-level bilge alarm, and bilge exhaust ventilation fans. Fire protection is equally robust, featuring a Seafire fixed fire extinguisher (FM200) for the engine room with remote control, fire insulation in the engine room, fire-resistant treatment for piping, an automatic shutdown system, and an automatic fire damper system, together with four portable fire extinguishers housed in recessed lockers and an integrated fire alarm in the skylounge with heat and smoke detectors in each cabin.

Electrical system

An all-LED lighting system bathes the interior and exterior, while a Maretron monitoring and control system provides comprehensive oversight. Twin Onan 29 kW/60 Hz generators with sound shields, showing 2,594 and 2,598 hours as of April 2024, deliver reliable shipboard power, supplemented by a 100A shore power system with ISO Boost transformers comprising two 100A units and two additional 100A units, plus a cable master, and safeguarded by a vapor-proof battery switch. Engine and generator starting is assured by four 244AH AGM start batteries supported by two battery chargers; ship's DC 24V service power is supplied by eight 210AH Lifeline AGM batteries with two combined inverter/chargers; and critical circuits benefit from two 210AH Lifeline emergency batteries with an independent battery charger. The main electric panel incorporates AC and DC circuit breakers, an emergency power package and lighting system stand ready, and AC-volt receptacles are located throughout, including the engine room, with GFI protection for all AC outlets in the heads, galley, and engine room. Corrosion control is addressed by an electrolysis bonding system and cathodic protection with zinc anodes for shafts, struts, etc., while ambiance is tailored through a dimmer system for LED ceiling lights in the salon, master, and VIP staterooms, and a dimmer system for LEC ceiling lights on the aft deck and in the skylounge. Exterior illumination impresses with eight underwater lights and two stern docking lights.

Included in sale

A 2018 25' Sea Hunt tender is included, powered by two 150 hp Yamaha outboards with low hours, and carefully stored under a shed to preserve its condition.

CONTACTS

Shestakov Yacht Sales is a brokerage company specializing in the sale and service of yachts worldwide. The company offers services for buying and selling both new and used motor yachts, sailing vessels, and luxury superyachts. They also provide yacht registration, insurance, technical maintenance, crew selection, and charter organization services across the U.S., Canada, Latin America, the Caribbean, and the Bahamas.

The founder and lead broker of the company is Andrey Shestakov, a licensed and certified expert with extensive experience in marine engineering and shipbuilding.

The company has an extensive network of partnerships with major yacht manufacturers worldwide and provides services in multiple languages, including Russian, Ukrainian, Spanish, and English. The office is in Dania Beach, Florida, USA.

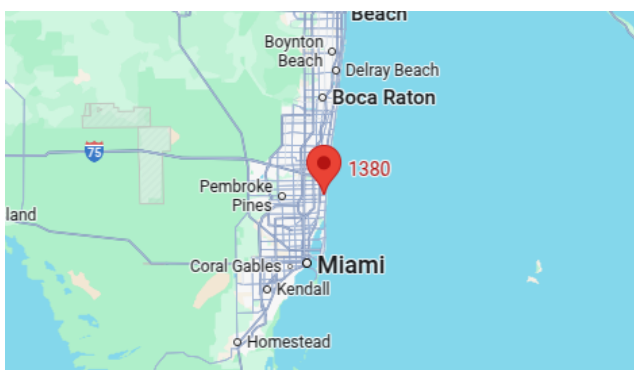
For more information and to view available yachts, you can visit the company's official website: <https://shestakovyachtsales.com>

Contact details

Phone: +1(954)274-4435

Email: andrey@shestakovyachtsales.com

Address



1380 Weeping Willow Way, Hollywood,
Florida 33019