



GENESIS - HORIZON YACHTS



Builder: [Horizon Yachts](#)

LOA: 90' 0" (27.43 m)

Year Built: 2020

Beam: 23' 0" (7.09 m)

Model: FD 87

Max Draft: 19' 8" (6 m)

Price: \$6,200,000 USD Subject to change.

Cruising Speed: 12 Knots (13.81 MPH)

[See full listing on our website](#)

Location: Fort Lauderdale, United States

Max Speed: 14.50 Knots (16.69 MPH)

If you would like to buy a yacht **GENESIS - HORIZON YACHTS** or would like help answering any questions concerning purchasing, selling, or chartering a yacht, please call **+1(954)274-4435** or click here on <https://shestakovyachtsales.com>

TABLE OF CONTENTS

OVERVIEW 3

SPECIFICATIONS 6

 Basic Information 6

 Dimensions 6

 Speed, Capacities and Weight 7

 Accommodations 7

 Hull and Deck Information 7

 Engine Information 8

GALLERY 9

DETAILED DESCRIPTION 20

CONTACTS 26

OVERVIEW

GENESIS, a 2020 Horizon FD87, represents an exceptional example of the model—poised with superyacht presence yet nimble as a fast-displacement motor yacht. On a vessel of roughly 90 feet she offers a rare, dedicated beach club on the aft main deck complete with a full-service bar, lounge area, and a proper galley, transforming the waterline into an elevated, private seaside retreat ideal for anchored days.

The FD series, penned by Cor D. Rover, reshapes life aboard with a succession of spaces for both passage-making and idling afternoons. Her assertive, forward-raked pilothouse glazing affords superb sightlines for captain and crew while the plumb, wave-piercing bow promotes notable fuel efficiency and a gentler motion underway. That vertical stem yields valuable internal volume, enabling an expansive forward main-deck owner's suite and opening exterior real estate for a forward-facing settee and broad sunpads—an idyllic perch for sunset cocktails or a leisurely coastal run.

Aboard aft, the upgraded 2,000 lb-capacity hydraulic swim platform, laid in teak, is engineered to serve as a tender dock or to carry a pair of Spark jet skis when configured. The current owner prefers the platform open to the sea, stowing the tender on the upper deck so nothing interrupts the view from the beach club, accessed through the transom garage door. Step into the beach club and you find a welcoming bar with counter and two fixed stools, an L-shaped settee, a full kitchen, and a TV—true yacht-club ambiance brought down to the water.

Forward of the beach club a centerline passageway leads to laundry, storage, and two crew cabins configured for professional, crewed operation: one cabin with bunks and the other with a full-size berth appropriate for a solo captain or couple, the two cabins sharing a head. Beyond, the engine room is immaculate: twin MTU 1600 hp engines showing roughly 1,200 hours and twin

Onan 29 kW generators with about 1,600 hours, each component meticulously serviced and up to date. Under the stewardship of an experienced captain, GENESIS shines cosmetically and mechanically, an advantage that translates to confidence for any survey-minded buyer.

A safe, portside staircase rises to the main deck, a thoughtful route for watches and passages. Aft on the main deck a large centerline dining table with loose chairs and a built-in settee sits upon elegant teak, with full walkarounds to port and starboard leading forward to the bow; a fold-down TV completes this alfresco living space, enhancing the flexible, flybridge-style outdoor experience. Slide open the salon doors and wide-plank oak flooring floods the interior with warmth and light. The aft salon lounge presents an L-shaped settee and two chairs opposite to starboard, where a built-in TV conceals a discreet day head—perfect for guests returning from the aft deck. Forward, the interior dining area flows into an open-concept galley with generous counters designed for family-style service and effortless entertaining. To starboard a stairway rises to the enclosed sky lounge and wheelhouse, while the fore section of the main deck reveals a best-in-class owner's retreat. The on-deck master centers on a king berth, complemented by a chaise and vanity, and a full-beam ensuite clad in crisp white marble with his-and-hers sinks and a rain shower—serene and superyacht in feel.

Below decks the guest level accommodates three ensuite cabins for up to six guests, bringing the owner's party sleeping capacity to eight in total. Also on this level is a substantial laundry and pantry hub—an often-understated asset for long-range cruising—equipped with full-size washer and dryer units, a wine cooler, dual refrigerator/freezer drawers, a sink, and abundant storage, all designed to support “heads and beds” and elevate onboard hospitality. Large hull windows bathe each stateroom and the utility spaces in natural light, reinforcing the FD's hallmark sense of volume.

The sky lounge rivals the main salon's lounge in scale. Just inside its sliding

doors is another day head and a secondary TV, while the wheelhouse presents three captain's chairs at a glass-bridge helm outfitted with four large displays. Those signature forward-leaning windows deliver exceptional visibility and overhead glass skylights admit generous sunlight. The continuation of wide-plank flooring unifies the yacht's refined, contemporary aesthetic. Outside, despite the substantial enclosed sky lounge, the exterior deck remains remarkably generous: a full bar with four stools faces an opposing L-shaped settee protected by the hardtop overhang for all-weather enjoyment. Aft resides a proper barbecue discreetly enclosed when not in use, alongside a large deep freezer that doubles as bench seating. The boat deck, rated to 2,000 lbs, accommodates a sizable tender, reinforcing GENESIS's go-anywhere, expedition-spirited capability within a luxurious motor yacht platform. A starboard door from the upper deck opens to the bow, where the elevated vantage emphasizes the commanding view underway or at anchor. A built-in forward-facing lounge and expansive sunpads create a private oasis with direct access to ground tackle and the forepeak anchor locker—a seamanlike arrangement befitting serious cruising. GENESIS is far from a typical Horizon FD87. Finished and maintained to a high standard and managed by an experienced captain, she unites fast-displacement efficiency, skylounge sophistication, beach club glamour, tender garage practicality, and true superyacht poise in a remarkably well-kept, turn-key luxury yacht.

SPECIFICATIONS

Basic Information

Category:
Motor yachts

Year Built:
2020

Sub category:
Motor Yacht

Country:
United States

Model Year:
2020

Dimensions

LOA:
90' 0" (27.43 m)

Max Draft:
19' 8" (6 m)

Beam:
23' 0" (7.09 m)

Speed, Capacities and Weight

Cruise Speed:

12 Knots (13.81 MPH)

Water Capacity:

400 Gallons

Max Speed:

14.50 Knots (16.69 MPH)

Fuel Capacity:

3480 Gallons

Gross Tonnage:

175 Pounds

Accommodations

Total Heads:

5

Crew Cabin:

2

Hull and Deck Information

Hull Material:

Fiberglass and Plastic Yachts

Hull Designer:

N/A

Deck Material:

GRP

Interior Designer:

Horizon Yachts

Hull Configuration:

Fast Displacement Hull

Engine Information

Engines:

2

Engine Type:

Inboard

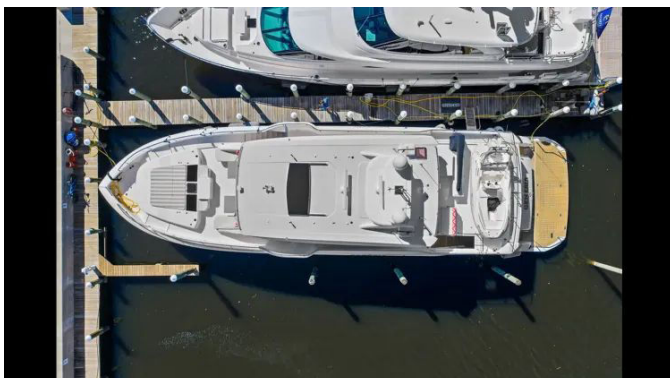
Manufacturer:

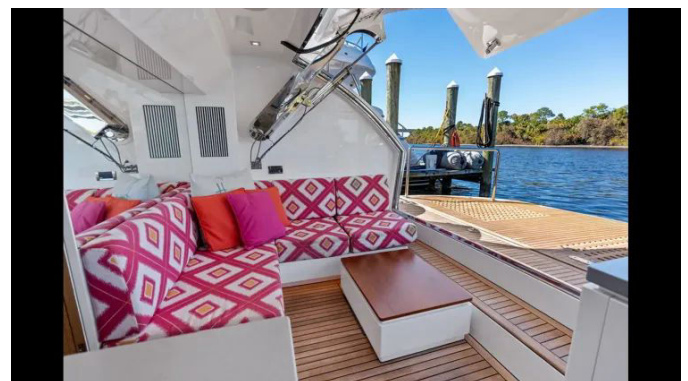
MTU

Fuel Type:

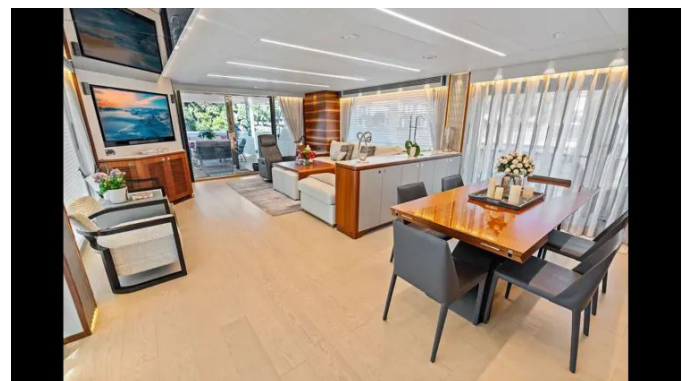
Diesel

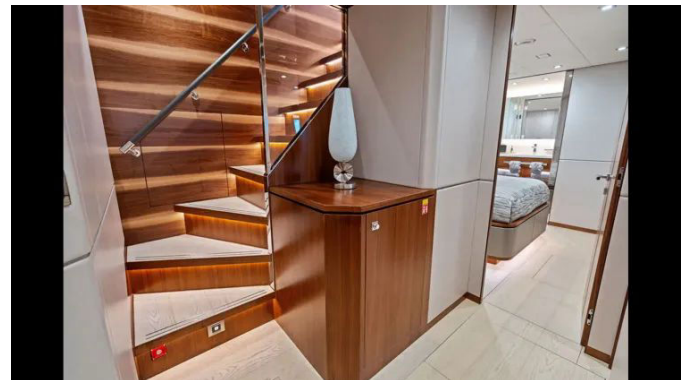
GALLERY



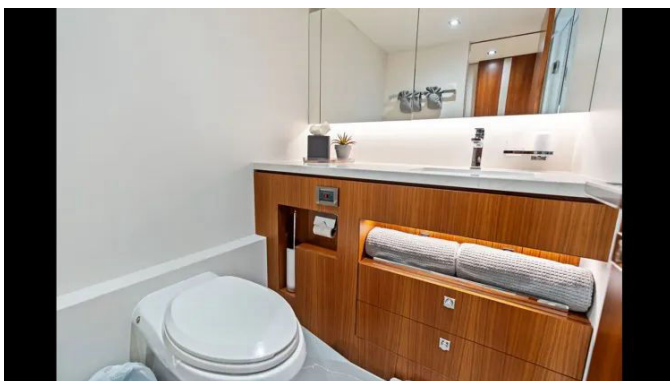






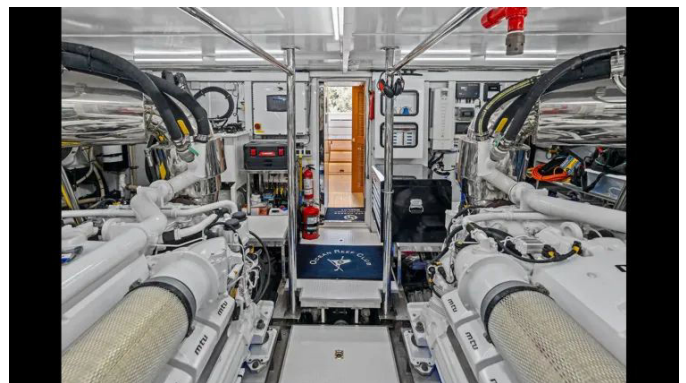














DETAILED DESCRIPTION

Salon

The salon invites with a supple leather sofa paired with ottomans and a coffee table, complemented by dedicated plate and glassware storage that keeps entertaining effortless, while light wood flooring accentuates the sweep of floor-to-ceiling windows that bathe the space in natural light and a full dayhead enhances guest comfort without intruding on the room's clean lines; a formal dining setting for ten takes center stage for celebratory meals, supported by a portside storage hutch, a 55" LED TV, and enveloping audio from the Sonos system to complete an atmosphere both refined and welcoming.

Master stateroom

The master stateroom is a serene retreat of light wood flooring and a bright, airy interior crowned by a skylight, offering abundant wardrobe space with two full-height hanging lockers and a forward walk-in closet, while a king-sized bed anchors the suite in effortless luxury; a 55" LED TV, a fold-up vanity with stool, and a portside chaise lounge enrich daily rituals, and the en suite features a dual-sink arrangement with shower to starboard and a toilet to port forward VIP, delivering practical separation of spaces while preserving the room's calm, contemporary flow.

VIP stateroom

The VIP stateroom exudes quiet sophistication with an ensuite bath, a generous hanging locker, and a 43" TV, creating a polished private haven for favored guests where thoughtful details and refined finishes ensure a

memorable stay.

Port and starboard staterooms

Port and starboard staterooms are mirrored in design, each with its own ensuite, a 43" LED TV, drawers tucked beneath the berths, and hanging lockers set into the forward bulkhead, ensuring equal comfort and thoughtful storage for every guest in a balanced, cohesive layout.

Skylounge

Bathed in natural light from a large, custom-designed skylight with slides, the skylounge blends relaxation and command with a bespoke helm carrying a full suite of engine gauges and three Stidd helm chairs ready at the controls; a spacious settee with a sliding table joins a second settee with hidden storage facing a 55" Hi/Lo TV that rises on cue, and entertaining flows around a walkaround wet bar with four swivel barstools, a 48" wide Frigid Rigid ice chest, a Raritan ice maker, a Vitrifrigo refrigerator, and a retractable grill, while practical deck handling is supported by a 2,500 lb Steelhead davit, media can pivot to a folding TV cabinet with a 43" LED TV, MarQuipt aluminum seven-step side boarding sea stairs stow aft beneath a sunscreen shading the seating, and new aft deck and chair cushions elevate lounging comfort; climate and systems are maintained by a Dometic AC system, a Reverso fuel polishing system 210 Series, and a Delta-T Ventilation System with an oil change completed at approximately 900 hours, and freshwater purity is refined by a Watermaker Aqua Matic and Spot Zero for crystalline results.

Beach club

At water's edge, the beach club opens through a hydraulic door with a central

pantograph door, unveiling a hydraulic Hi/Lo swim platform rated to 2000 lb with a neatly concealed swim ladder within the platform, removable handrails that set safety with style, and a sofa seat that invites lingering by the sea, while a compact bar with sink and fridge/freezer keeps refreshments perfectly chilled between dips.

Galley

The galley is organized for serious cruising and gracious hosting, with a full-height pantry and abundant storage throughout; cold storage is handled by a 30" Subzero refrigerator and a 30" Subzero freezer, while a complete suite of GE appliances—including oven, cooktop, range, and dishwasher—makes meal preparation seamless and a Kitchen Aid trash compactor keeps the workspace clean and efficient.

Laundry

A custom-designed laundry room centralizes shipboard care with a GE washer and GE dryer, a Vitrifrigo refrigerator and Vitrifrigo wine cooler, and generous storage throughout; a sink with a large folding area, a countertop, and an ironing board streamline chores, while a starboard sliding glass door and a hinge access door to port provide convenient exterior access and airflow.

Crew quarters

Function meets comfort in the crew quarters, where a portside staircase leads directly to the aft deck; the captain's cabin to port features a double-size berth, clothes locker, and TV, while a separate crew cabin offers a single berth and clothes locker, and one crew head with shower serves the area efficiently with three steps rising to the lazarette and beach club, while ship support includes a

Swan air compressor in the port lazarette, a dive compressor in the starboard lazarette, and a GE washer/dryer for turn-key readiness.

Engine room & deck features

Power comes from twin MTU 10V2000M96L engines rated at 1600 hp with approximately 1300 hours, turning NI Al Bronze KCA Series propellers measuring 41" D × 35" P × 5B × 1.05, with precision handling assured by a bow thruster SH550, a stern thruster SH420, and stabilizers SPS93B, VF1650; ground tackle is formidable, with two 100 kg Pool N-type galvanized steel High Holding Power anchors and 300' high-tensile anchor chains to port and starboard, monitored via a Maxwell chain counter and complemented by ACCO 300 FT anchor chain, while on deck two Maxwell VWC 3500 vertical anchor windlasses and three Maxwell VC 2500 electric capstans, alongside two Maxwell VWC 3500 windless and two Maxwell VC2500 capstans noted in the specification, make light work of anchoring; the forward and side decks are non-skid for secure footing, and a forward U-shaped settee with two tables pairs with a large sunpad with storage for relaxed passage-making, with amenities including a Vitrifrigo fridge/freezer and icemaker, sunshades at the foredeck, a starboard hutch with ice maker, fridge, storage, and a remote plug-in, plus a folding-leaf Hi/Lo aft deck table that seats eight to ten facing a folding TV cabinet with a 43" LED TV while MarQuipt aluminum seven-step side boarding sea stairs stow neatly aft.

Running gear

The running gear features NI Al Bronze KCA Series propellers measuring 41" D × 35" P × 5B × 1.05, supported by a bow thruster SH550, a stern thruster SH420, and stabilizers SPS93B, VF1650, while ground tackle includes two 100 kg Pool N type galvanized steel High Holding Power anchors with 300'

high-tensile chains to port and starboard handled by two Maxwell VWC 3500 vertical anchor windlasses and three Maxwell VC 2500 electric capstans to ensure reliable performance under way and at anchor.

Fire and safety equipment

Safety is comprehensively addressed with a burglar alarm and two surveillance cameras, backed by a fixed fire suppression system and portable powder-type fire extinguishers, while early warning is ensured by thirteen Maretron smoke and thermal detectors, ten Maretron CO detectors, five fire alarms, one pneumatic heat detector, and two Flashtone horn/strobe units, and offshore readiness is confirmed with an EPIRB and a Search and Rescue Transponder.

Electrical systems

Electrical autonomy is robust, with twin ONAN 29 kW generators delivering 120/240 VAC at 60 Hz in single phase with approximately 1700 hours, all monitored via an Octoplex display in the lower stairwell; service batteries comprise eight Lifeline AGM 12 volt 210 AH units, starting duty is handled by four Lifeline AGM 12 volt 255 AH starter batteries for engine control supplemented by two Lifeline AGM 12 volt 125 AH batteries, and emergency power is secured by two Lifeline AGM 12 volt 210 AH batteries, while conversion and shore connectivity include two Victron inverter/chargers, two 100A 125/250V single-phase power inlets, two Cablemaster shore power systems with 25 m ship-to-shore cables, and two 25 kVA ACME shore power transformers.

Electronics and navigation

Command is intuitive and redundant with a Garmin NAV package

complemented by a Garmin remote input device, vital readouts at hand via a Sea Fire fire suppression system monitor, and controls for searchlight, generator remote, VHF, compass, and wipers all within easy reach; passage efficiency is refined by autopilot and trim tab control, while a lateral thruster interface and an engine exhaust alarm bolster maneuvering confidence and safety.

Disclaimer

The details of this yacht are offered in good faith, but the accuracy of the information and the condition of the vessel are not guaranteed and may change without notice; this yacht is offered subject to prior sale, price change, or withdrawal from the market without notice, and the listing is provided as a convenience to clients and is not intended to convey direct representation of a specific yacht for sale.

CONTACTS

Shestakov Yacht Sales is a brokerage company specializing in the sale and service of yachts worldwide. The company offers services for buying and selling both new and used motor yachts, sailing vessels, and luxury superyachts. They also provide yacht registration, insurance, technical maintenance, crew selection, and charter organization services across the U.S., Canada, Latin America, the Caribbean, and the Bahamas.

The founder and lead broker of the company is Andrey Shestakov, a licensed and certified expert with extensive experience in marine engineering and shipbuilding.

The company has an extensive network of partnerships with major yacht manufacturers worldwide and provides services in multiple languages, including Russian, Ukrainian, Spanish, and English. The office is in Dania Beach, Florida, USA.

For more information and to view available yachts, you can visit the company's official website: <https://shestakovyachtsales.com>

Contact details

Phone: +1(954)274-4435

Email: andrey@shestakovyachtsales.com

Address



1380 Weeping Willow Way, Hollywood,
Florida 33019