

## SP92 - SANLORENZO



**Builder:** [Sanlorenzo](#)

**LOA:** 91' 0" (27.94 m)

**Year Built:** 2026

**Beam:** 23' 0" (7.09 m)

**Model:** SP92

**Min Draft:** 12' 0" (3.67 m)

**Price:** - Subject to change.

**Max Draft:** 12' 10" (3.92 m)

[See full listing on our website](#)

**Location:** Fort Lauderdale, United States

**Cruising Speed:** 33 Knots (37.98 MPH)

**Max Speed:** 38 Knots (43.73 MPH)

---

# TABLE OF CONTENTS

---

|                                    |           |
|------------------------------------|-----------|
| <b>OVERVIEW .....</b>              | <b>3</b>  |
| <b>SPECIFICATIONS .....</b>        | <b>4</b>  |
| Basic Information .....            | 4         |
| Dimensions .....                   | 4         |
| Speed, Capacities and Weight ..... | 4         |
| Hull and Deck Information .....    | 5         |
| Engine Information .....           | 5         |
| <b>GALLERY .....</b>               | <b>6</b>  |
| <b>DETAILED DESCRIPTION .....</b>  | <b>10</b> |
| <b>CONTACTS .....</b>              | <b>12</b> |

## OVERVIEW

---

Spanning 28 metres (92'), the Sanlorenzo SP92 embodies the high energy luxury of the yard's Smart Performance series, marrying razor cut Italian lines with nimble capability and a contemporary approach to life aboard. Conceived by Studio Zuccon International Project, the sculpted, taut exterior melts into pared back interiors of hushed refinement, where full height glazing and a luminous, open plan keep you visually attuned to the water at every turn. Laid out across multiple levels, the SP92 delivers generous salons and lounges, expansive aft decks with a beach club style platform, and overnight accommodation for up to 8 guests in four cabins, supported by crew quarters for 4. Twin MAN V12s propel this planing superyacht to an exhilarating 38-40 knots, offering the pulse of a performance boat with the range and polish of a premium motor yacht. An efficient hull form and advanced onboard systems underline a forward thinking commitment to sustainability and to relaxed, rapid cruising, while an open yacht sensibility intensifies the connection to the sea.

# SPECIFICATIONS

---

## Basic Information

---

**Category:**  
Motor yachts

**Year Built:**  
2026

**Model Year:**  
2027

**Country:**  
United States

## Dimensions

---

**LOA:**  
91' 0" (27.94 m)

**Beam:**  
23' 0" (7.09 m)

**Min Draft:**  
12' 0" (3.67 m)

**Max Draft:**  
12' 10" (3.92 m)

## Speed, Capacities and Weight

---

**Cruise Speed:**  
33 Knots (37.98 MPH)

**Gross Tonnage:**  
78 Pounds

**Max Speed:**  
38 Knots (43.73 MPH)

## Hull and Deck Information

---

**Hull Material:**

Fiberglass and Plastic Yachts

**Hull Designer:**

Sanlorenzo

**Deck Material:**

Composite

**Interior Designer:**

Sanlorenzo

**Hull Configuration:**

Planing

## Engine Information

---

**Engines:**

2

**Fuel Type:**

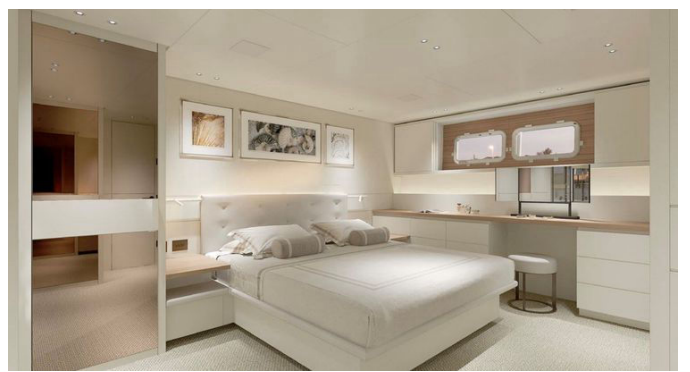
Diesel

**Engine Type:**

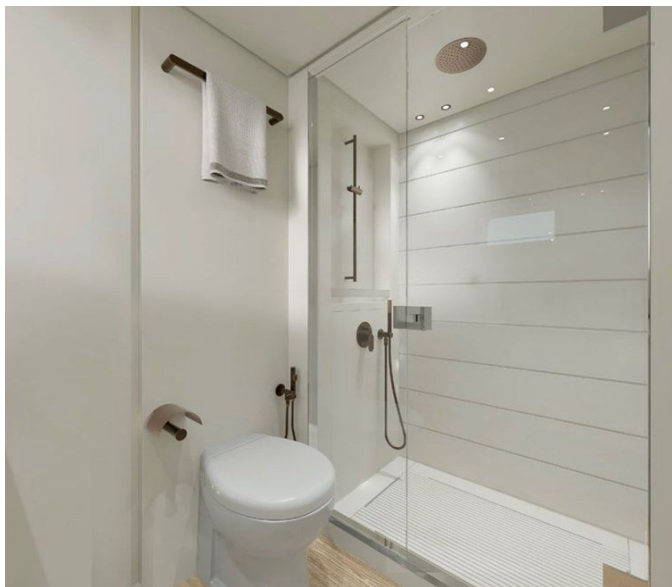
Inboard

# GALLERY









---

# DETAILED DESCRIPTION

---

## Detailed

---

The Sanlorenzo SP92 embodies the brand's Smart Performance philosophy, marrying the pulse-quickening acceleration and sporty character of a true performance yacht with the generous volume, refined comfort, and day to day liveability expected of a contemporary luxury platform. At 27.95 m (91'8") overall length, with a wide 7.10 m (23'4") beam and an exceptionally shallow 1.20 m (3'9") draft, the SP92 is engineered to run fast, cruise efficiently and unlock destinations that deeper draft yachts simply cannot reach. With exterior lines by Zuccon International Project, the profile is sleek and low, its clean architectural surfaces and purposeful stance giving the yacht a modern, athletic presence while the multi level arrangement optimizes flow and function to emphasize seamless indoor-outdoor living and a direct, tactile relationship with the water—the defining characteristics of the SP series. A key differentiator is the waterjet propulsion package, which pairs twin MAN V12 (2,000 hp) engines with MJP waterjets to deliver exhilarating acceleration, composed high speed comfort, and surefooted handling across a broad speed range; performance figures reach up to approximately 40 knots with a comfortable fast cruise in the mid 30s, while the jet drive layout also reduces draft and enhances close quarters maneuverability—ideal for owners who demand genuine sportiness without sacrificing onboard ease. Accommodation is typically arranged for eight guests in four staterooms, supported by crew quarters for four, a configuration that suits both owner operator use and fully serviced charters. Interiors favor contemporary Italian minimalism, abundant natural light and a relaxed, residential ambience, conceived for everyday cruising, convivial weekends and extended stays aboard. Sustainability and efficiency are integral to the concept: optimized hull geometry for commonly

used speed ranges and the integration of photovoltaic solar technology to assist onboard systems reflect the model's commitment to smarter, cleaner performance. An SP92 currently in build represents a rare opportunity to secure one of Sanlorenzo's most compelling modern performance yachts, uniting striking design, waterjet driven speed, shallow draft versatility and meticulous Sanlorenzo craftsmanship in a highly contemporary ninety two foot platform.

# CONTACTS

---

Shestakov Yacht Sales is a brokerage company specializing in the sale and service of yachts worldwide. The company offers services for buying and selling both new and used motor yachts, sailing vessels, and luxury superyachts. They also provide yacht registration, insurance, technical maintenance, crew selection, and charter organization services across the U.S., Canada, Latin America, the Caribbean, and the Bahamas.

The founder and lead broker of the company is Andrey Shestakov, a licensed and certified expert with extensive experience in marine engineering and shipbuilding.

The company has an extensive network of partnerships with major yacht manufacturers worldwide and provides services in multiple languages, including Russian, Ukrainian, Spanish, and English. The office is in Dania Beach, Florida, USA.

For more information and to view available yachts, you can visit the company's official website: <https://shestakovyachtsales.com>

## Contact details

---

**Phone:** +1(954)274-4435

**Email:** [andrey@shestakovyachtsales.com](mailto:andrey@shestakovyachtsales.com)

## Address

---



1380 Weeping Willow Way, Hollywood,  
Florida 33019