



SHESTAKOV

Yacht Sales

INNISFAIL - undefined



Year Built: 1939

Beam: 18' 0" (5.49 m)

Model: Trumpy Fantail Houseboat

Min Draft: 16' 5" (5 m)

Price: \$1,695,000 USD Subject to change.

Max Draft: 16' 5" (5 m)

[See full listing on our website](#)

Location: Jacksonville, United States

Cruising Speed: 8 Knots (9.21 MPH)

Max Speed: 11.50 Knots (13.23 MPH)

LOA: 91' 0" (27.74 m)

If you would like to buy a yacht **INNISFAIL** - or would like help answering any questions concerning purchasing, selling, or chartering a yacht, please call **+1(954)274-4435** or click here on <https://shestakovyachtsales.com>

TABLE OF CONTENTS

OVERVIEW	3
SPECIFICATIONS	4
Basic Information	4
Dimensions	4
Speed, Capacities and Weight	4
Accommodations	5
Hull and Deck Information	5
Engine Information	5
GALLERY	6
DETAILED DESCRIPTION	14
CONTACTS	25

OVERVIEW

INNISFAIL is a distinguished Mathis–Trumpy fantail luxury motor yacht, celebrated for its sought-after galley-up configuration and storied American heritage. Commissioned and launched in 1939 for Joseph Cudahy of Illinois, she was commissioned into service with the U.S. Navy during World War II and later returned to private ownership, where her decks have hosted multiple Presidents of the United States during her remarkable history.

The yacht's interior is intelligently arranged with a forward pilothouse, a full-beam galley positioned up, an expansive salon, a full-beam owner's suite featuring an offset queen berth, and two guest cabins each with ensuite facilities, while aft a generous fantail deck offers the versatility of open-air enjoyment or enclosed comfort. Carefully and consistently maintained through the years, INNISFAIL remains in superb condition, a true exemplar of meticulous stewardship.

SPECIFICATIONS

Basic Information

Model Year:
1939

Country:
United States

Year Built:
1939

Dimensions

LOA:
91' 0" (27.74 m)

Beam:
18' 0" (5.49 m)

Min Draft:
16' 5" (5 m)

Max Draft:
16' 5" (5 m)

Speed, Capacities and Weight

Cruise Speed:
8 Knots (9.21 MPH)

Water Capacity:
1200 Gallons

Max Speed:
11.50 Knots (13.23 MPH)

Fuel Capacity:
1100 Gallons

Accommodations

Sleeps:

5

Crew Cabin:

3

Total Heads:

3

Crew Berths:

5

Hull and Deck Information

Hull Material:

Wooden Yachts

Hull Designer:

John Trumpy

Deck Material:

Wood

Interior Designer:

John Trumpy

Hull Configuration:

N/A

Engine Information

Engines:

2

Engine Type:

Inboard

Manufacturer:

Detroit Diesel

Fuel Type:

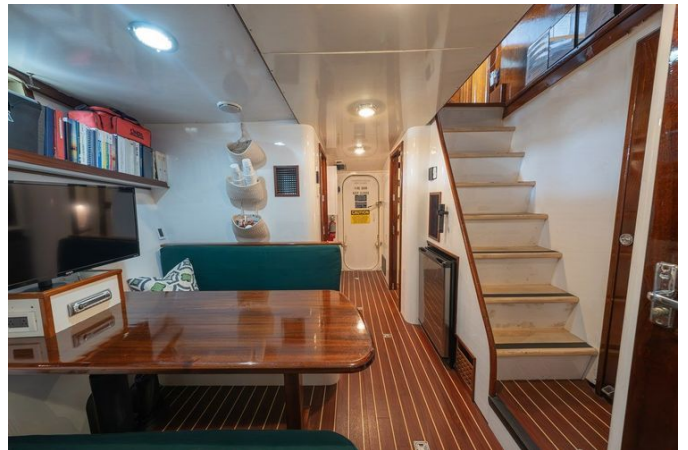
Diesel

GALLERY

















DETAILED DESCRIPTION

Overview

INNISFAIL, Contract No. 242, is one of the rare surviving Mathis–Trumpy fantail yachts and was commissioned by Joseph M. Cudahy of Illinois for cruising the U.S. East Coast as the second Mathis–Trumpy he ordered. Launched under the name INNISFAIL, she was requisitioned by the U.S. Navy in 1942 and redesignated YP-354; during her wartime service she carried two 20mm deck-mounted cannons and a depth charge rack on the stern, serving in that capacity for five years before receiving a U.S. Government refit in 1947. Remaining in government service after the refit, she was employed by U.S. Presidents, foreign dignitaries and heads of state until 1965, when she returned to private hands. A comprehensive 2007 refit restored her original name, and she has been carefully maintained both inside and out ever since; she currently holds a USCG-Inspected Vessel Certificate for sixty-five passengers.

A classic example of the American fantail motor yacht and an unmistakable World War II veteran that has entertained numerous U.S. Presidents, INNISFAIL offers an expansive aft deck and an enormous salon, three owner and guest ensuite staterooms, and ample crew accommodations comprising three cabins. Presented in beautiful condition throughout, she remains USCG-inspected for sixty-five passengers.

Accommodations

INNISFAIL presents John Trumpy's much sought-after "galley-up" configuration, with the wheelhouse positioned forward that flows into a full-beam galley featuring a pass-through to the portside deck, followed by an exceptionally

spacious salon and an elegant aft fantail deck that can be thrown open to the sea breeze or enclosed when weather dictates. On the lower level forward, crew accommodations for five lead into the engine room, with an expansive full-beam master stateroom, a midship twin guest cabin, and an aft VIP twin situated beneath the fantail arranged further aft. Every guest stateroom is finished with its own ensuite.

Galley

Conceived to serve both the exacting demands of a dedicated chef and the relaxed needs of onboard entertaining, the galley is appointed with resilient Formica countertops that frame a GE five-burner stainless glass-top range, complemented by an overhead extraction fan to maintain fresh, comfortable air. A 2022 Whirlpool stainless convection microwave sits alongside a stainless refrigerator also new in 2022, while everyday conveniences such as a coffee maker and toaster are discreetly in place. Prep and cleanup are simplified by a generous double stainless sink equipped with a pull-out spray faucet, all set upon a classic parquet sole and softly lit by overhead fixtures. Two fifteen-inch round ports together with expansive windows pour natural light into the space, and plentiful storage compartments keep provisions, plates, glasses and other serveware neatly stowed. Circulation is effortless, with a half Dutch door and pass-through to the portside deck, a forward companionway to the wheelhouse, a swing door into the salon, and a companionway door opening to the starboard deck.

Salon

Bathed in natural light from twelve windows fitted with shades, the salon is centered around a Samsung 40-inch television installed in 2024, positioned above a carpeted sole and beneath a painted headliner punctuated by

varnished solid-wood beam laths. The arrangement is designed for refined comfort, with two custom barrel chairs, an extra-long portside sofa and, forward, an expansive corner settee matched with a cocktail table. Two aluminum portlight side tables and an elegant table lamp provide convenient surfaces and warm illumination, while a buffet chest offers generous storage to keep the area tidy. Climate is easily regulated via A/C controls, and a companionway leads to the owner and guest staterooms.

Owner's stateroom

The full beam owner's suite, situated amidships aboard INNISFAIL, has been thoughtfully reconfigured by a previous owner who replaced the original twin berths with a tasteful offset queen arrangement that retains the yacht's classic character. Immediately adjacent to the stateroom, the companionway houses a linen locker, a fire hydrant station and 120V remote electrical panels. Inside the cabin, the offset queen is flanked by substantial storage including a bureau with eight drawers and a second bureau with four drawers, a full length mirror mounted on the entry door and a cedar lined hanging locker, while a generous hold beneath the stairwell provides space for larger gear. Climate and comfort are controlled via an A/C control and dedicated air vent, and two opening portlights with curtains bring in daylight and ventilation. The painted overhead and bulkheads together with a carpeted sole create a bright, quiet interior that is softly illuminated by LED overhead lighting. Entertainment was upgraded with a Samsung TV mounted on the aft bulkhead in 2024, and safety features include a smoke and carbon monoxide detector.

Ensuite owner's head

The owner's ensuite is appointed with a marble-tiled stall shower and a porcelain pedestal wash basin, while a Tecma electric head provides reliable,

modern functionality. Storage is discreetly arranged in a corner cabinet, and an opening portlight allows invigorating sea breezes to circulate, supplemented by an efficient exhaust fan to maintain ideal airflow. The finish is refined, with a painted overhead and painted bulkheads set above a matching marble-tiled sole, and thoughtfully placed towel racks keep linens elegantly within reach.

Aft VIP-guest stateroom

INNISFAIL's full-beam aft VIP-guest stateroom retains its original layout and delivers an expansive, elegant retreat with twin oversized lower berths set fore-and-aft on port and starboard, each with drawer storage beneath — four drawers in total — while a centerline chest of drawers provides further storage and visual balance. The cabin is serviced by two generous cedar-lined hanging lockers and softly lit by two reading lamps, and four opening portlights with curtains bring abundant natural light and ventilation. Comfort and safety are addressed with dedicated air conditioning controls and an integrated smoke and carbon monoxide detector, and the refined interior is finished with wall-to-wall carpet, a painted overhead and painted bulkheads.

Ensuite aft guest head/day head

Designed to serve as both a private ensuite and a convenient day head, this aft guest bathroom features a large marble-tiled shower and matching marble-tiled flooring that lend a cohesive, refined aesthetic. A porcelain wash basin sits alongside a Tecma electric head for reliable, modern functionality, while a full-width mirror visually expands the space. Natural light and ventilation are provided by an opening portlight with curtains, with an exhaust fan ensuring effective airflow. Practical appointments include a towel rack, a painted overhead and painted bulkhead for a crisp, finished look, and a three-door locker with generous outboard storage. Direct access to the hallway

or the adjacent cabin guarantees smooth circulation throughout the yacht.

Midship guest stateroom

Positioned amidships, this guest stateroom offers a pair of fore-and-aft twin berths with generous storage drawers beneath to keep belongings neatly stowed. A cedar-lined hanging locker protects wardrobe items, while a dedicated A/C control and its own air vent provide individualized climate comfort. Further storage is supplied by two bureaus, each with four drawers, and the space is softened underfoot by a plush carpeted sole, with a painted overhead and painted bulkheads adding crisp refinement. An opening portlight fitted with an elegant curtain admits natural light and fresh air, completing a serene and highly practical private retreat.

Ensuite midship guest head

This refined midship guest ensuite is finished with a marble-tiled shower and a matching marble-tiled sole, while a porcelain wash basin beneath an elegant mirror and a Tecma electric head complete the fittings. An exhaust fan together with an opening portlight fitted with a curtain delivers ventilation and natural light, and the painted overhead and painted bulkheads provide a crisp, bright interior.

Crew accommodations

Discreetly positioned forward and accessed via a companionway ladder from the pilothouse, the dedicated crew quarters feature a forward captain's cabin with a centerline full berth, a generously proportioned settee adjoining a convenient laundry area, and two over under twin crew cabins to port and starboard, all with direct access to the engine room for efficient servicing. The

accommodation is finished in crisp white paneling with warm teak trim, delivering a bright, highly functional and nautically refined atmosphere.

Captain's cabin

The captain's cabin is centered on a full berth with integrated drawer storage beneath and is complemented by an executive desk and office area accompanied by practical bookshelves, creating a refined workspace. Lighting blends focused task light and soft ambient glow through two reading lamps and overhead illumination, while a hanging locker provides neat stowage. Six opening portlights admit generous natural light and fresh air, and the finish is crisp with a painted overhead and painted bulkheads, enhanced by a mirror and a comfortable carpeted sole. For onboard administration an Epson printer/copier/fax is supplied, and navigation information can be displayed on a Garmin repeater, which is installed but not currently connected to the GPS antenna.

Port crew cabin

The port crew cabin is designed with both function and refinement in mind, featuring stacked single berths—upper and lower—that are complemented by an opening portlight to introduce fresh air and natural daylight. A hanging locker, fitted with a mirror on the inside of its door, and a series of shelves ensure belongings remain neatly stowed, while generous drawers tucked beneath the berths maximize storage capacity. Underfoot, a timeless teak-and-holly sole lends warmth and durability, and twin reading lamps provide focused illumination for personal comfort.

Starboard crew cabin

The starboard crew cabin offers an upper and a lower single berth, each complemented by twin reading lamps and an opening portlight that brings fresh air and natural daylight into the space. Personal items are neatly contained in a dedicated toiletry cabinet, while a hanging locker with a mirror mounted on the inside of its door ensures effortless dressing and preparation, all laid upon a classic teak-and-holly sole that reflects timeless maritime craftsmanship.

Crew head

Outfitted with both comfort and functionality in mind, the crew head features a Tecma electric head paired with a stainless wash basin, a full stall shower accompanied by convenient towel bars, and an overhead light and fan assembly to ensure ample illumination and ventilation, all set atop a teak-and-holly sole that imparts a warm, classic maritime finish.

Crew social area

Beneath a warm teak-and-holly sole, the crew social area is designed for elegant relaxation and efficient service. A varnished dinette table, seating five, provides a refined setting for leisurely meals or conversation, while a flat-screen television and a Sony stereo system furnish tasteful entertainment during off-duty hours. Daily tasks are simplified by an LG washer and dryer and a GE chiller/refrigerator, with a nearby bookshelf offering reference material and leisurely reads. Storage has been carefully considered throughout, with overhead locker space, a dedicated locker for cleaning supplies, and provisions including an iron with ironing board and a vacuum to maintain pristine order. Two opening portlights admit natural light and fresh air, and a short flight of

stairs leads directly to the pilothouse. Safety equipment is close at hand, including a four-person Winslow valise life raft repacked in February 2026 and valid for three years, together with an ACR EPIRB secured in the ditch bag.

Hull and deck equipment

Built to marry timeless beauty with robust seaworthiness, the hull is fashioned from 2" mahogany plank-on-oak framing, screw-fastened throughout and strengthened by three steel bulkheads that enclose the anchor locker, the forward engine room, and the aft engine room. Varnished teak dresses the side decks, bow, and fantail, while continuous teak rails span the vessel's length, fitted with double intermediate lifelines for both elegance and security. Safety equipment is comprehensive, including assorted fenders and dock lines, a selection of life jackets and all USCG-required safety gear with placards and lighting, and three throwable ring buoys for immediate response.

A folding signal mast supports steaming and anchor lights, two cowl vents boost natural airflow, and a ventilation hatch serves the crew quarters to maintain comfort below. The aft deck has been conceived for gracious entertaining, featuring a full-beam transom upholstered bench, a central teak dining table surrounded by six cushioned teak dining chairs, and paired teak dry bars that frame the space. For refined service, the area is fitted with KitchenAid refrigerator and freezer drawers, a dedicated wine chiller, and a Scotsman ice maker, while a full Isinglass enclosure with zippered openings provides shelter without sacrificing visibility; convenient port and starboard wing doors facilitate movement to and from the side decks.

Forward, an upholstered bench and a bow shade create a peaceful lounge, and practical conveniences include a freshwater wash spigot portside amidships, starboard-side stairs to the flybridge and tender deck, a deck box and coolers for provisions, plus two additional deck boxes allocated for cleaning supplies. Launch and boarding are handled with precision by four hand-crank tender

davits, Marquipt boarding stairs with eight steps, and a side boarding ladder, with a burgee staff socket positioned at the bow. The tender complement comprises a 10' wooden dinghy with oars and a 12' wooden dinghy with oars plus a 6hp Mercury outboard. Ground tackle is equally well appointed, with an anchor davit, two Danforth-type anchors of approximately 70 lbs and 60 lbs, and an Ideal windlass equipped with a foot switch.

Air draft measures 30' with the mast raised, 27' with the mast lowered and antennas up, and 21' with the mast down and antennas down to the top of the radar.

Machinery and electrical

Power is supplied by twin Detroit Diesel 228 hp 8V71N engines, each showing approximately 10,050 hours as of May 2026, paired with Allison MH30 2.97:1 transmissions to deliver dependable and efficient propulsion. Onboard electrical generation is provided by a 1996 Northern Lights 30 kW 1800 RPM generator with 8,322 hours as of May 2026 alongside a 1992 Northern Lights 27 kW 1800 RPM generator with 13,806 hours as of May 2026. The ship's electrical backbone includes two 8D engine starting batteries and two 8D batteries serving as the generator starting and house banks, with charging managed by a pair of ProMariner ProNautic 12-50P chargers—one dedicated to the house bank and the other to the starting bank. Routine maintenance and protection have been considered with an oil change pump for the main engines and transmissions and dual Racor fuel filters installed for both generators as well as for each main engine. Climate comfort is handled by two Dometic 48,000 BTU chillers supplying distributed air handlers throughout the yacht, while domestic hot water is produced by two twenty-gallon water heaters. Auxiliary systems include a Metabo HPT 135 PSI air compressor, a Marathon freshwater pump with accumulator tank, and manual Hynautic hydraulic steering for precise helm control. Reliability has been further

enhanced by the installation of two new main engine through-hulls in 2026 and a new port generator through-hull in 2026, and dockside service is convenient with 50-amp shore power inlets provided to both port and starboard.

Wheelhouse and electronics

The wheelhouse is dominated by an eight-spoke ship's wheel with a stainless rim set before a helm console that elegantly fuses timeless nautical appointments with contemporary navigation technology. Course and engine commands feel immediate with a binnacle compass, two double-lever controls and dual engine gauge clusters, while the American Bow Thruster control provides confident low-speed maneuvering. Precise steering information is delivered by a Raytheon ST60+ rudder angle indicator and depths are monitored by a Raymarine ST40 digital depth sounder; the Simrad EVO12 radar/chartplotter assumes central navigational duties and is integrated with a Simrad AP28 autopilot, complemented by a Simrad QS80 autopilot dodge lever for smooth manual intervention. Situational awareness is further enhanced by two engine room cameras and an aft deck camera tied into the Simrad system, an ACR AIS Transceiver for traffic tracking, and two ICOM IC M510 VHF radios equipped with CommandMic units (2025) for clear communications. Audible and visual signaling is comprehensive with an air whistle, an air horn and a powerful searchlight, and visibility is maintained in all conditions thanks to the windshield wipers and their controls. Electrical systems are conveniently grouped on a 12 volt panel and a 120 volt panel, supported by an engine shutdown control box and a dedicated bilge pump control panel, while AC controls and overhead lighting manage comfort and ambiance. The wheelhouse is finished with a refined Fusion stereo, a Chelsea clock and barometer, framed Certificates of Inspection on the aft bulkhead, and an upholstered bench seat with two chart drawers beneath, all set on a

handsome teak parquet sole.

Broker remarks

INNISFAIL stands as one of the most significant and instantly recognizable classic American motor yachts available today, offering a rare opportunity to acquire a genuine piece of yachting history. This larger pre-war Trumpy has been carefully maintained, tastefully modernized, and comprehensively equipped to accommodate both private enjoyment and respectful commercial operation. Her timeless lines, graceful proportions and expansive crew accommodations deliver a degree of comfort and operational practicality seldom found in vessels of her generation. Commissioned in 1939, INNISFAIL enjoys a storied pedigree, having entertained U.S. Presidents Roosevelt, Truman, Eisenhower, Kennedy, Nixon, Ford, Reagan and Clinton, as well as numerous foreign dignitaries and heads of state. During World War II she served with the U.S. Navy as patrol vessel YP 345, fitted with twin 20 mm cannons on deck and depth charge racks aft; her survival through wartime duty and the many distinguished chapters that followed in private hands further cement her status as one of the truly iconic surviving American motor yachts. The current owners have been exemplary custodians, cruising her extensively from the Florida Keys to Nantucket while keeping her to an exceptionally high standard. Although operated solely for private use, they have preserved her U.S. Coast Guard Inspected Passenger Vessel certification for up to 65 passengers—a designation that requires strict annual and biennial inspections and surveys. INNISFAIL presents superbly throughout, and any discerning buyer stepping aboard will immediately recognize the pedigree, craftsmanship and extraordinary level of care she represents; few yachts afloat today offer such a compelling fusion of provenance, capability and enduring elegance.

CONTACTS

Shestakov Yacht Sales is a brokerage company specializing in the sale and service of yachts worldwide. The company offers services for buying and selling both new and used motor yachts, sailing vessels, and luxury superyachts. They also provide yacht registration, insurance, technical maintenance, crew selection, and charter organization services across the U.S., Canada, Latin America, the Caribbean, and the Bahamas.

The founder and lead broker of the company is Andrey Shestakov, a licensed and certified expert with extensive experience in marine engineering and shipbuilding.

The company has an extensive network of partnerships with major yacht manufacturers worldwide and provides services in multiple languages, including Russian, Ukrainian, Spanish, and English. The office is in Dania Beach, Florida, USA.

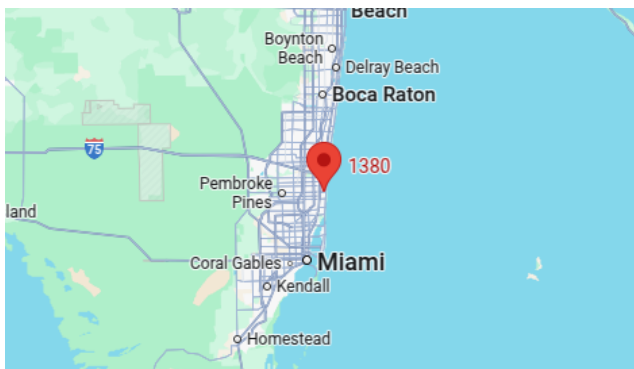
For more information and to view available yachts, you can visit the company's official website: <https://shestakovyachtsales.com>

Contact details

Phone: +1(954)274-4435

Email: andrey@shestakovyachtsales.com

Address



1380 Weeping Willow Way, Hollywood,
Florida 33019