

TEXAS T - CUSTOM



Builder: [CUSTOM](#)

LOA: 92' 0" (28.04 m)

Year Built: 2009

Beam: 22' 0" (6.83 m)

Model: N/A

Max Draft: 21' 1" (6.42 m)

Price: \$4,161,683.13 USD Subject to change.

Cruising Speed: 9 Knots (10.36 MPH)

[See full listing on our website](#)

Location: Coomera, Australia

Max Speed: 12 Knots (13.81 MPH)

TABLE OF CONTENTS

OVERVIEW	3
SPECIFICATIONS	4
Basic Information	4
Dimensions	4
Speed, Capacities and Weight	4
Accommodations	5
Hull and Deck Information	5
Engine Information	5
GALLERY	6
DETAILED DESCRIPTION	13
CONTACTS	17

OVERVIEW

TEXAS T is a 28.05 m (92 ft) steel displacement explorer motor yacht, crafted by Sulis Marine and launched in 2009, then thoroughly modernized in 2021. She carries an active Certificate of Survey classified 1D (90 passengers plus 10 crew) and 2B (10 passengers plus 2 crew), a testament to her commercial readiness as well as robust safety credentials. Conceived and built in Brisbane, Australia, this bluewater superyacht has proven her mettle across more than 80,000 nautical miles in the South Pacific and Asia, with passages to the Maldives, Myanmar and Papua New Guinea. A graceful long range cruiser and charter capable expedition vessel, TEXAS T accommodates eight guests in four elegantly finished cabins, each with its own ensuite, delivering dependable range, secure operation and restrained luxury on every voyage.

SPECIFICATIONS

Basic Information

Category:
Motor yachts

Year Built:
2009

Sub category:
Expedition Yachts

Country:
Australia

Model Year:
2009

Dimensions

LOA:
92' 0" (28.04 m)

Max Draft:
21' 1" (6.42 m)

Beam:
22' 0" (6.83 m)

Speed, Capacities and Weight

Cruise Speed:
9 Knots (10.36 MPH)

Water Capacity:
603.63 Gallons

Max Speed:
12 Knots (13.81 MPH)

Fuel Capacity:
6340.13 Gallons

Accommodations

Total Heads:

5

Hull and Deck Information

Hull Material:

Steel Yachts

Hull Designer:

N/A

Deck Material:

Steel

Interior Designer:

N/A

Hull Configuration:

N/A

Engine Information

Engines:

2

Engine Type:

Inboard

Manufacturer:

Cummins

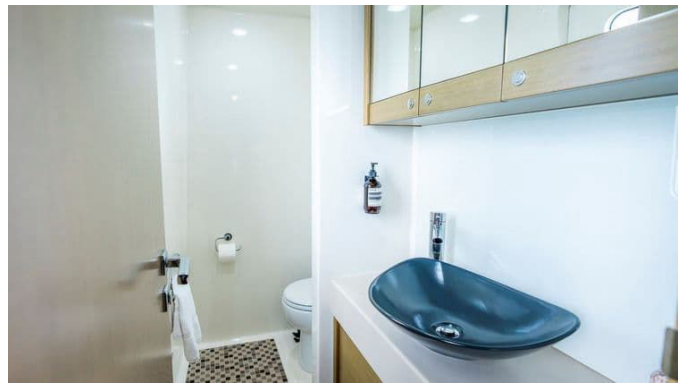
Fuel Type:

Diesel

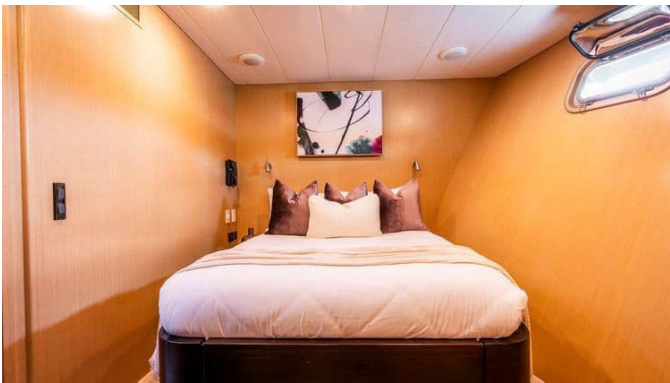
GALLERY



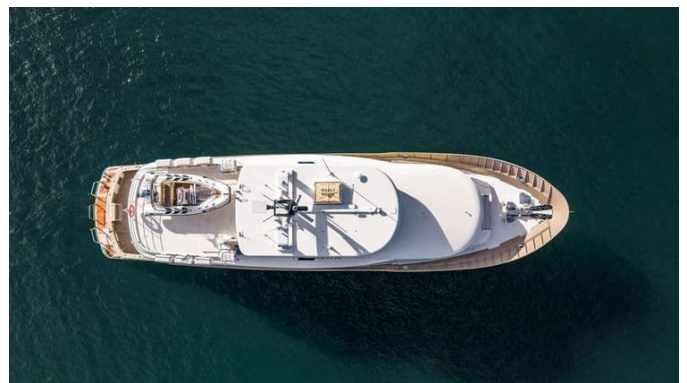












DETAILED DESCRIPTION

Texas t pitch

TEXAS T is a 28.05 m (92 ft) steel hulled expedition yacht, conceived and built in Brisbane, Australia by Sulis Marine in 2009 and comprehensively refitted in 2021 to modern expedition standards. Purposeful and proven, she has covered more than 80,000 nautical miles across the South Pacific and Asia, visiting remote shores from the Maldives and Myanmar to Papua New Guinea. Her full displacement steel hull paired with an aluminium superstructure delivers unwavering stability and long range endurance, while twin Cummins QSM11 300 HP engines provide a comfortable nine knot cruising speed and a top speed of twelve knots, backed by nimble close quarters handling from a Side Power hydraulic bow thruster for assured passages and precise port entries. Welcoming up to eight guests in four ensuite cabins, TEXAS T is arranged for both private exploration and gracious hospitality, the full beam midships master suite stretching across the centreline with a king size bed, abundant storage and a sumptuous ensuite with a full size bathtub and separate shower; a forward VIP offers a double island berth and private ensuite, and two additional twin bunk cabins each enjoy their own ensuite for comfortable, independent stays, while a convenient dual access day head on the main deck serves both interior and exterior social spaces. Forward crew quarters accommodate up to three, with a double berth for the captain and over and under single bunks for crew, offering excellent separation to ensure privacy and attentive service. Inside, polished hardwood flooring and Tasmanian oak joinery create a warm contemporary ambience in an open plan saloon that flows from a generous L shaped lounge to a dedicated reading nook and a well equipped galley, while entertainment is immersive with a forty eight inch LG flat screen on a lift, a Bose sound system and

high speed connectivity via onboard Starlink. Outdoor living is equally compelling, with a teak laid swim platform leading to a fishing cockpit fitted with a plumbed live bait tank, multiple rod holders and a custom electric stainless steel Cookout BBQ, an aft deck arranged for protected alfresco dining around a high gloss teak table seating eight and flanked by dual moulded lounges with a large under counter drinks refrigerator, and an air conditioned flybridge appointed for all weather entertaining with a large teak dining table, mirrored L shaped lounges, a wine fridge, ice maker and a well appointed wet bar with additional refrigeration. Commercial capability underpins her private yacht poise, carrying a current certificate of survey for classes 1D (ninety guests plus ten crew) and 2B (ten guests plus two crew), and offered at price plus GST if applicable, TEXAS T is turnkey ready for long range cruising and refined adventure.

Accommodations

The full beam midships master suite anchors the accommodation with a king island bed, abundant wardrobe space, and a private ensuite featuring a full size bathtub and separate shower for unhurried indulgence, while a forward VIP guest cabin offers a serene retreat with a double island bed and its own ensuite. The port and starboard guest cabins each provide over and under bunk beds and private ensuites, ensuring comfortable and autonomous berthing for families or friends, and a cleverly positioned dual access day head on the main deck with both exterior and interior entry serves social areas with seamless convenience. Crew quarters are located forward in two dedicated cabins: a double berth for the captain and over and under single bunks for crew who share a well appointed bathroom, with integrated laundry facilities within the crew space to maintain impeccable service behind the scenes and to support extended passages.

Galley/ appliances

Thoughtfully connected to the aft deck via a top hinged hopper window, the galley is spacious and efficient with abundant storage and generous counter space for provisioning and preparation, anchored by a 700 L MITSUBISHI upright fridge/freezer with integrated ice maker and supported by an ASKO dishwasher, a SIEMENS cooktop, an ILVE oven with KLEENMAID extractor hood, a SAMSUNG microwave, a BREVILLE coffee maker and an INSINKERATOR trash compactor to ensure a clean, quiet workflow. Beyond the galley the saloon carries a LIEBHERR wine fridge to keep vintages at ideal temperature, the flybridge is provisioned with a FISHER & PAYKEL 107 L refrigerator, a VINTEC wine fridge and a U LINE icemaker to support effortless entertaining, and a custom double door refrigerator serves the aft deck while the fishing cockpit is fitted with a COOKOUT stainless steel BBQ with sink for fresh from the sea cuisine. In the lazarette a FREEZETEC custom XL fridge/freezer expands cold storage capacity for long passages, and practicality continues below stairs with an LG dryer and a FISHER & PAYKEL washer in the dedicated laundry to ensure the yacht runs as smoothly as it feels.

Electronics & entertainment

Connectivity and cinema grade entertainment are woven seamlessly throughout TEXAS T, with the saloon centered on a 48" LG flat screen on a lift paired with a SONY Blu ray DVD and media hub, the master suite featuring a SONY 43" display and an additional flat screen above the bathtub for indulgent viewing, and each guest suite and the captain's cabin enjoying their own dedicated displays, all harmonized by a BOSE sound system and distributed speakers for immersive audio. Underway and at anchor, onboard Wi Fi via Starlink keeps guests connected, while navigation and situational awareness are confidently managed by a full SIMRAD suite, delivering the modern

electronic backbone expected on a serious long range expedition yacht.

Deck gear

Purpose built deck equipment underscores TEXAS T's expedition pedigree, with a Palfinger PC3800 crane new in 2022 delivering a safe working load of 2000 kg at a 1.5 m extension, tapering to 280 kg at a 7.1 m reach to simplify tender and gear handling, and with additional range and versatility provided by 800 L of unleaded petrol storage housed in a survey approved racked jerrycan system supported by custom stainless steel brackets. Beneath the fishing cockpit sole lies expansive bulk cruising storage and a dedicated rack for six dive bottles, complemented by a large plumbed live bait tank, multiple rod holders and removable stainless steel stern rails, forming a robust seagoing toolkit that readies the yacht for serious adventure and extended offshore operations.

CONTACTS

Shestakov Yacht Sales is a brokerage company specializing in the sale and service of yachts worldwide. The company offers services for buying and selling both new and used motor yachts, sailing vessels, and luxury superyachts. They also provide yacht registration, insurance, technical maintenance, crew selection, and charter organization services across the U.S., Canada, Latin America, the Caribbean, and the Bahamas.

The founder and lead broker of the company is Andrey Shestakov, a licensed and certified expert with extensive experience in marine engineering and shipbuilding.

The company has an extensive network of partnerships with major yacht manufacturers worldwide and provides services in multiple languages, including Russian, Ukrainian, Spanish, and English. The office is in Dania Beach, Florida, USA.

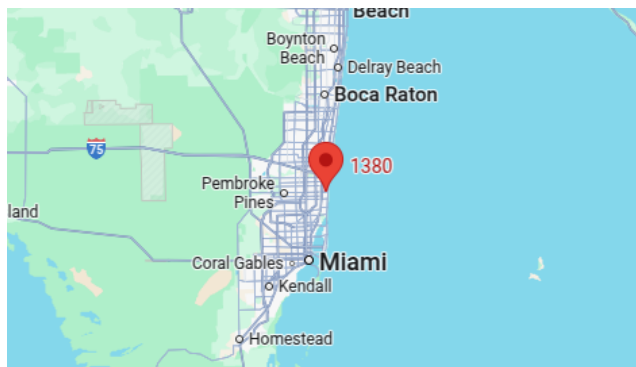
For more information and to view available yachts, you can visit the company's official website: <https://shestakovyachtsales.com>

Contact details

Phone: +1(954)274-4435

Email: andrey@shestakovyachtsales.com

Address



1380 Weeping Willow Way, Hollywood,
Florida 33019