



SHESTAKOV

Yacht Sales

CLOUDIA - SUNSEEKER



Builder: [Sunseeker](#)

LOA: 92' 0" (28.07 m)

Year Built: 2019

Beam: 21' 0" (6.55 m)

Model: 95 YACHT

Min Draft: 7' 0" (2.13 m)

Price: \$6,270,000 USD Subject to change.

Cruising Speed: 20 Knots (23.02 MPH)

[See full listing on our website](#)

Location: Southampton, United Kingdom

Max Speed: 26 Knots (29.92 MPH)

If you would like to buy a yacht **CLOUDIA - SUNSEEKER** or would like help answering any questions concerning purchasing, selling, or chartering a yacht, please call **+1(954)274-4435** or click here on <https://shestakovyachtsales.com>

TABLE OF CONTENTS

OVERVIEW 3

SPECIFICATIONS 5

 Basic Information 5

 Dimensions 5

 Speed, Capacities and Weight 5

 Accommodations 6

 Hull and Deck Information 6

 Engine Information 6

GALLERY 7

DETAILED DESCRIPTION 16

CONTACTS 20

OVERVIEW

This single-owner, privately held Sunseeker 95 Yacht has never been offered for charter and has been maintained from day one to exacting superyacht standards, presenting a turnkey platform for immediate enjoyment. Poised between the presence of a 100 foot superyacht and the dynamism of a contemporary performance motor yacht, she unites progressive styling, bespoke craftsmanship, and comfortable liveability into a cohesive, supremely polished whole.

Her sculpted exterior lines and a flowing, open-plan interior create an instantly memorable silhouette, while the main deck owner's suite—complete with an elegant split level en suite—provides the kind of volume, seclusion, and refinement typically reserved for much larger 40 metre yachts. Expansive floor to ceiling glazing floods the living spaces with natural light, beautifully offset by high gloss wenge joinery and a cutting edge entertainment ecosystem that cultivates a refined, contemporary atmosphere throughout.

The sweeping flybridge is an uncompromising expression of outdoor hospitality, arranged to deliver panoramic social spaces with a fully equipped wet bar, retractable hardtop, integrated crane, BBQ and ample alfresco dining—an ideal setting for confident entertaining in true superyacht fashion. Below the waterline, twin MTU 12V2000 engines at 1,950 hp each (with low hours) provide assured long range performance, augmented by Sleipner SPS90 stabilizers with VF1350 fins, joystick docking and an Atlas shore power converter to support global cruising capability.

Meticulously appointed for blue water passagemaking, her specification is comprehensive and turn key, including three Kohler 20.5 kW generators, a watermaker with both softening and polishing systems, an advanced fuel management suite, underwater illumination and a hydraulic swim platform for efficient tender and toy handling. Navigation and situational awareness are

elevated by an integrated Simrad suite with FLIR thermal night vision, while bespoke 4K AV—featuring Sonos and Bowers & Wilkins audio with karaoke—ensures cinematic evenings at anchor. A yacht of pedigree and presence, this Sunseeker 95 offers flagship amenities, performance and world ready systems in a privately maintained, never chartered package, prepared for its next discerning owner.

SPECIFICATIONS

Basic Information

Model Year:
2020

Country:
United Kingdom

Year Built:
2019

Dimensions

LOA:
92' 0" (28.07 m)

Beam:
21' 0" (6.55 m)

Min Draft:
7' 0" (2.13 m)

Speed, Capacities and Weight

Cruise Speed:
20 Knots (23.02 MPH)

Water Capacity:
462.3 Gallons

Max Speed:
26 Knots (29.92 MPH)

Fuel Capacity:
3170.06 Gallons

Gross Tonnage:
102 Pounds

Accommodations

Total Heads:

5

Hull and Deck Information

Hull Material:

Fiberglass and Plastic Yachts

Hull Designer:

N/A

Deck Material:

GRP

Interior Designer:

N/A

Hull Configuration:

Deep Vee

Engine Information

Engines:

2

Engine Type:

Inboard

Manufacturer:

MTU

Fuel Type:

Diesel

GALLERY





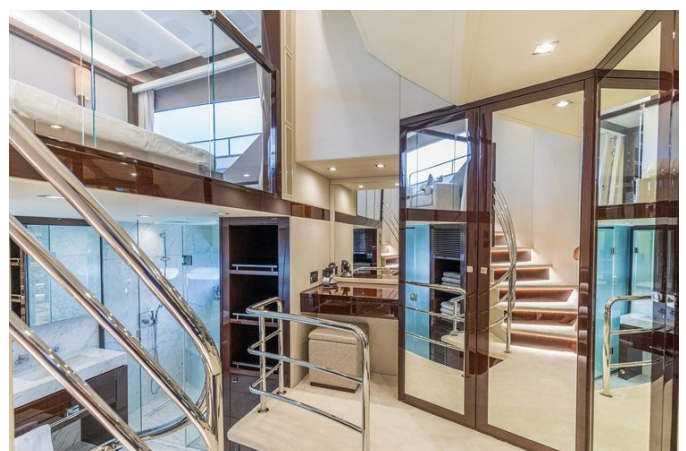














DETAILED DESCRIPTION

Flybridge & deck

Rising gracefully above the water, the flybridge is sheltered by a hard top fitted with a retractable central sunroof that invites the sky in, while an aft sun canopy offers instant, elegant shade when required. A second helm station provides exceptional visibility and precise control, and generous U-shaped seating encircles a refined teak table, creating an inviting setting for social cruising and al fresco dining. The fully appointed wet bar, complete with a Waeco refrigerator, Kenyon BBQ grill, and ice maker, keeps refreshments and light fare conveniently at hand. Teak decking flows seamlessly between the flybridge and the aft deck, a testament to the yacht's fine craftsmanship, and a hydraulic swim platform delivers smooth, effortless access to the water. Thoughtful practicality is evident in the removable stainless railing, drilled for stability, and in the crane with an SWL of 500 kg, ready to handle equipment and tenders with confidence.

Interior layout & finishes

The main deck accommodates a master stateroom designed as a private retreat, featuring a split-level en-suite, while three guest cabins each enjoy the convenience of their own en-suite bathrooms. A raised pilothouse releases additional volume for an expansive main deck layout that flows into an open-plan saloon and dining area set beneath sweeping panoramic windows. The interior is clad in high-gloss wenge, complemented by lock sets on all cabin doors to ensure privacy and security. Practical luxury continues in the details with extra 240 V sockets positioned in the saloon and subwoofer areas, and a full complement of USB and 240 V outlets installed throughout by Vimar.

Entertainment & comfort

Throughout the yacht, the salon along with the master, VIP and guest cabins are equipped with Samsung 4K televisions sized between 55 and 65 inches, each paired with Blu-ray players and immersive Sonos and Bowers & Wilkins soundbars complete with subwoofers to deliver cinema-quality audio. Evening entertainment is amplified by a dedicated karaoke system featuring a stereo interface and purpose-built amplifiers, while the exterior spaces benefit from zoned audio by Sonance and Sonos that gracefully blankets the flybridge, cockpit and foredeck. Discreet yet thoughtful details — extra scatter cushions and bespoke décor finishes — provide the final touch of refined comfort, ensuring every moment aboard feels effortlessly elegant and indulgent.

Engines, propulsion & stabilization

Twin MTU 12V2000 powerplants provide the yacht's motive force, each rated at 1,950 hp, with the port engine recording 447 hours and the starboard 448 hours. That output is conveyed through shaft-drive propulsion to deliver assured, efficient thrust, while hydraulic bow and stern thrusters teamed with an intuitive joystick control system make close-quarters handling seamless. Comfort underway is maintained by Sleipner SPS90 stabilizers fitted with VF1350 fins, ensuring a composed and refined motion at all speeds.

Power & electrical systems

Climate control aboard is delivered by two 90,000 BTU air-conditioning units, ensuring uncompromised comfort in every season. Electrical autonomy is provided by three Kohler generators, each rated at 20.5 kW, 50 Hz, with logged running hours of 4,006, 3,790 and 3,857 respectively. An Atlas shore-power converter offers seamless compatibility with dockside supplies, while sealed,

maintenance-free lead-calcium batteries furnish dependable onboard energy storage. Illumination blends dramatic effect with efficiency, featuring Lumishore underwater lights alongside a full LED lighting package throughout the yacht.

Navigation & instruments

Mounted at the helm is a refined Simrad navigation array outfitted with NSO Evo3S displays, an integrated autopilot, AIS and a dedicated wind sensor, delivering precise situational awareness and intuitive command. For nocturnal or low-visibility passages a FLIR thermal night-vision camera brings concealed detail to light through darkness and fog, while a Richie Helmsman magnetic compass offers a reliable analogue heading reference, instilling confidence in every course and weather condition.

Water, fuel & utility systems

Designed for long-range independence and dependable performance, the yacht's water, fuel and utility systems marry efficiency with built-in redundancy. A high-capacity watermaker rated at 140 l/h works alongside integrated polishing and softening units to supply a steady stream of pristine freshwater. Fuel integrity is preserved by a dedicated fuel polishing system, ensuring smooth and reliable engine operation. For uninterrupted service, a standby freshwater pump is on hand to sustain pressure, while a purpose-built chain washer and trailing pump keep the anchor equipment and foredeck spotless after every anchoring.

Anchoring & deck equipment

Powerful twin Lewmar V8 24 V windlasses, paired with a dedicated capstan,

operate the twin stainless-steel anchors—one 100 kg and the other 50 kg—each laid on its own 100 m chain and secured by devil’s claw chain stoppers. Deck hardware reflects the same commitment to durability and refinement, with heavy-duty mooring cleats on the foredeck and protective covers for the pilothouse windows.

Crew and sanitary systems

Every head aboard — crew spaces included — is fitted with hygiene hoses to ensure dependable sanitation and pristine conditions throughout the yacht. Adjustable stainless-steel shower poles, paired with robust fiddle rails, offer enduring seagoing performance, marrying refined functionality with enhanced comfort, safety and order whether at anchor or under way.

CONTACTS

Shestakov Yacht Sales is a brokerage company specializing in the sale and service of yachts worldwide. The company offers services for buying and selling both new and used motor yachts, sailing vessels, and luxury superyachts. They also provide yacht registration, insurance, technical maintenance, crew selection, and charter organization services across the U.S., Canada, Latin America, the Caribbean, and the Bahamas.

The founder and lead broker of the company is Andrey Shestakov, a licensed and certified expert with extensive experience in marine engineering and shipbuilding.

The company has an extensive network of partnerships with major yacht manufacturers worldwide and provides services in multiple languages, including Russian, Ukrainian, Spanish, and English. The office is in Dania Beach, Florida, USA.

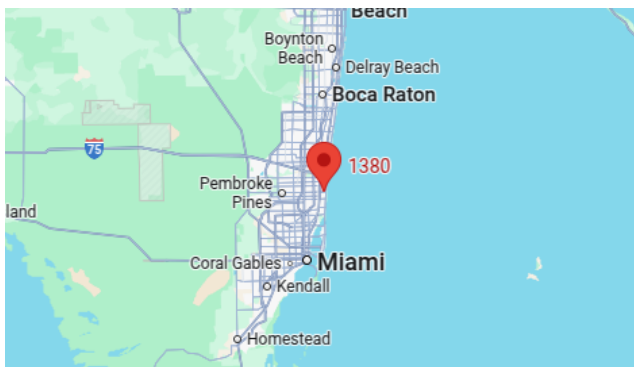
For more information and to view available yachts, you can visit the company's official website: <https://shestakovyachtsales.com>

Contact details

Phone: +1(954)274-4435

Email: andrey@shestakovyachtsales.com

Address



1380 Weeping Willow Way, Hollywood,
Florida 33019