

## PEGASUS IX - SABRE YACHTS



**Builder:** [SABRE YACHTS](#)

**LOA:** 92' 0" (28.04 m)

**Year Built:** 2004

**Beam:** 27' 0" (8.38 m)

**Model:** Catamaran

**Max Draft:** 13' 5" (4.08 m)

**Price:** \$1,995,000 USD Subject to change.

**Cruising Speed:** 21 Knots (24.17 MPH)

[See full listing on our website](#)

**Location:** Fort Lauderdale, United States

**Max Speed:** 25 Knots (28.77 MPH)

# TABLE OF CONTENTS

**OVERVIEW ..... 3**

**SPECIFICATIONS ..... 5**

    Basic Information ..... 5

    Dimensions ..... 5

    Speed, Capacities and Weight ..... 5

    Hull and Deck Information ..... 6

    Engine Information ..... 6

**GALLERY ..... 7**

**DETAILED DESCRIPTION ..... 10**

**CONTACTS ..... 12**

## OVERVIEW

---

BACK ON THE MARKET! A change in the owner's plans offers a rare chance to own this stunning yacht, which has received all necessary services following a comprehensive purchase survey.

Preliminary listing. More photos will be available soon as the interior upgrades are completed.

This splendid yacht features three spacious decks, seamlessly blending indoor and outdoor spaces to provide a luxurious and safe way to explore the stunning Exumas. Unlike many yachts in its class, its shallow draft of only 4.1 feet allows it to navigate waters as shallow as 5 feet, enabling guests to access hidden spots and vibrant coral reefs.

Equipped with two MTU 16V2000 engines, delivering a combined 4000 horsepower, this yacht has recently completed an extensive 2000-hour service, valued at \$100,000. While at anchor, guests can walk around the yacht, fully engaging with the breathtaking surroundings.

Whether you're looking for a luxurious escape or an adventurous exploration of the Bahamas, this Jet Drive Power Cat offers the perfect blend of elegance and performance.

The yacht's cooling capacity has been boosted with an additional 5-ton AC chiller plant, bringing it to an impressive 15 tons. Additionally, it is undergoing a fresh interior renovation, with all systems being carefully overhauled. A prospective buyer will have the unique opportunity to tailor the layout of both the main and upper decks to their liking.

Recent enhancements over the past 10 months include:

Ongoing interior refresh and reconfiguration, allowing for personalized modifications.

Completion of the main engine's 2000-hour service.

Thorough servicing of the Hamilton Jets.

Full maintenance of the hull.

New exhaust system for the Northern Lights generator.

Complete overhaul of the Hamman system.

Paint touch-ups.

This yacht is an excellent choice for those interested in yacht sales at the current boat location. Seize the opportunity to purchase a yacht that marries luxury with adventure!

# SPECIFICATIONS

---

## Basic Information

---

**Category:**  
Motor yachts

**Year Built:**  
2004

**Sub category:**  
Catamaran

**Country:**  
United States

**Model Year:**  
2004

## Dimensions

---

**LOA:**  
92' 0" (28.04 m)

**Max Draft:**  
13' 5" (4.08 m)

**Beam:**  
27' 0" (8.38 m)

## Speed, Capacities and Weight

---

**Cruise Speed:**  
21 Knots (24.17 MPH)

**Water Capacity:**  
1000 Gallons

**Max Speed:**  
25 Knots (28.77 MPH)

**Fuel Capacity:**  
2600 Gallons

## Hull and Deck Information

---

**Hull Material:**  
Aluminum Yachts

**Hull Designer:**  
Sabre Catamarans Australia

**Deck Material:**  
Aluminum

**Interior Designer:**  
N/A

**Hull Configuration:**  
Catamaran

## Engine Information

---

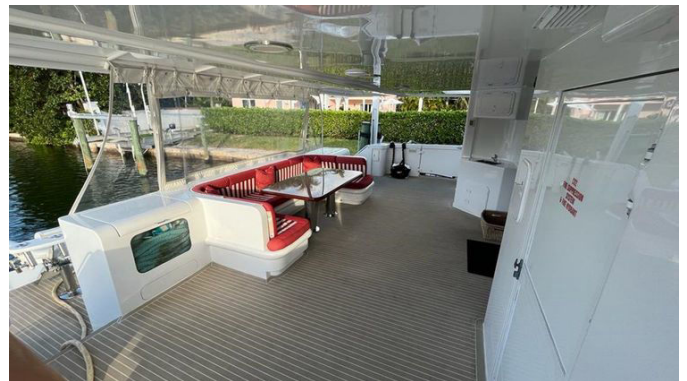
**Engines:**  
2

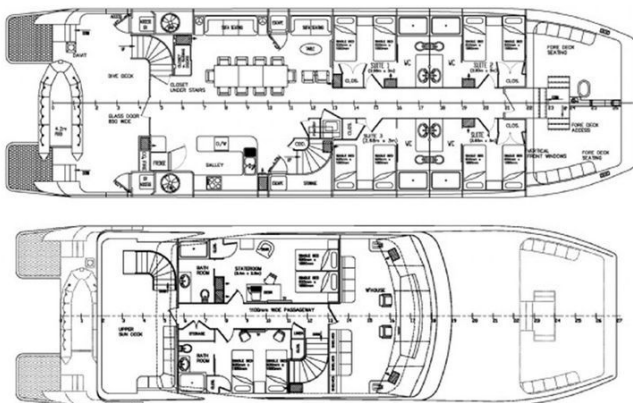
**Engine Type:**  
Inboard

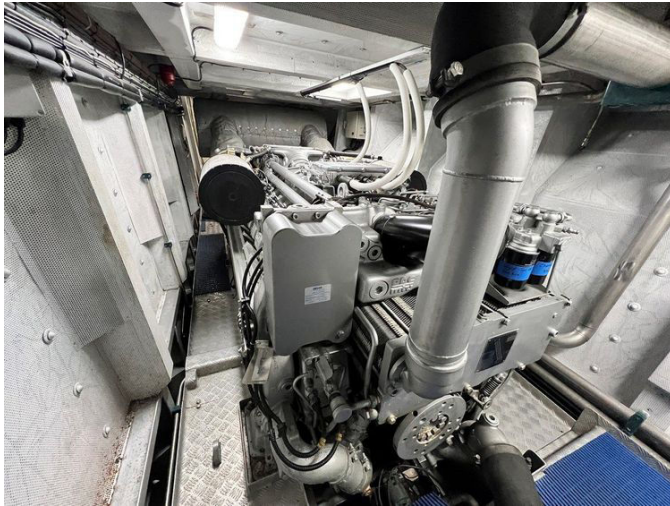
**Manufacturer:**  
MTU

**Fuel Type:**  
Diesel

# GALLERY







# DETAILED DESCRIPTION

---

## Walk through and specifications

---

Pegasus IX presents an extraordinary Master Stateroom that extends over 600 square feet, offering a luxurious private deck. This remarkable space is among the most opulent and comfortable Master Staterooms found on any yacht, even those reaching 130 feet in length. At the heart of the suite is a generous King Size Master bed, centrally placed to offer breathtaking views of the owner's private aft deck and a sweeping 180-degree panorama of the surrounding landscape. A sleek cabinet at the bed's foot conceals a large pop-up flatscreen TV, Blu-ray player, and entertainment system. The room also provides ample closet and storage space, along with a dedicated sitting area.

The Master Stateroom's expansive bathroom features an oversized shower, elegant marble decor, and dual sinks, offering plenty of room for relaxation and indulgence. Just behind the Master Stateroom, the owner's deck offers easy access to the flybridge and includes custom L-shaped seating and a chic cocktail/dining table, perfect for enjoying the views and socializing.

On the main deck, there are two spacious VIP cabins, each with private bathrooms, abundant natural light, and stunning views. The crew quarters, also with an ensuite bathroom, are located on the main deck, ensuring everyone on board experiences the same level of comfort and luxury. As you move towards the outdoor areas and aft deck, you'll find seating and dining arrangements for up to 10 guests, complete with an enclosure to shield guests from the elements. The deck also includes a live well and a fighting chair, promising an excellent fishing adventure.

In the bow area, there is storage for the tender, which can be launched using a permanently mounted davit. Finally, the sun deck is unparalleled. With the yacht's generous 27.5 ft beam, the sun deck offers every amenity an

experienced yachtsman could desire. You'll discover a spacious sunbathing area, along with forward and side enclosures. Additionally, there's a dining table with chairs, a walk-up wet bar, refrigerator, and icemaker, making it the ideal spot to relax and enjoy the stunning surroundings.

The yacht is outfitted with Hamilton Jets, a Fixed Co2 system, and a Northern Lights Generator STBD 3657, along with a Perkins Generator Port. For navigation and entertainment, it includes a Furuno TZ2 touch and iPad, and an ASEA 45 KVA power converter. The Watermaker R/O Parker 40gph has recently received a new HP pump, and the Haman Sanitation system ensures convenience. Climate control is maintained by two chillers in a closed loop system, and a manifold-controlled bilge pump system is in place for safety. An emergency fire pump fighting system is also included. For connectivity, the yacht is equipped with a KVH Satellite UHD7. Additional features include two ice makers, a wet bar on the sun deck, a hydraulic swim ladder, a Pompanette Fighting chair, and a live well. The tender is a 14' Novarania with an Evinrude 40hp engine, and a 1200 lb davit is available for launching.

# CONTACTS

---

Shestakov Yacht Sales is a brokerage company specializing in the sale and service of yachts worldwide. The company offers services for buying and selling both new and used motor yachts, sailing vessels, and luxury superyachts. They also provide yacht registration, insurance, technical maintenance, crew selection, and charter organization services across the U.S., Canada, Latin America, the Caribbean, and the Bahamas.

The founder and lead broker of the company is Andrey Shestakov, a licensed and certified expert with extensive experience in marine engineering and shipbuilding.

The company has an extensive network of partnerships with major yacht manufacturers worldwide and provides services in multiple languages, including Russian, Ukrainian, Spanish, and English. The office is in Dania Beach, Florida, USA.

For more information and to view available yachts, you can visit the company's official website: <https://shestakovyachtsales.com>

## Contact details

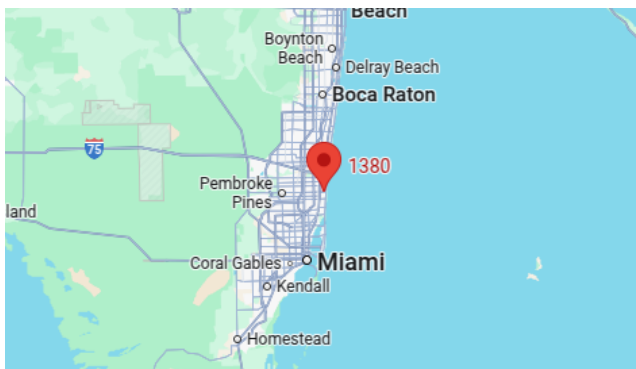
---

**Phone:** +1(954)274-4435

**Email:** [andrey@shestakovyachtsales.com](mailto:andrey@shestakovyachtsales.com)

## Address

---



1380 Weeping Willow Way, Hollywood,  
Florida 33019