

SEA GYPSY - BENETTI



Builder: [Benetti](#)

LOA: 93' 0" (28.50 m)

Year Built: 2011

Beam: 23' 0" (7.03 m)

Model: Delfino 93

Min Draft: 6' 3" (1.90 m)

Price: \$3,751,977 USD Subject to change.

Max Draft: 6' 9" (2.05 m)

[See full listing on our website](#)

Location: Viareggio, Italy

Cruising Speed: 13 Knots (14.96 MPH)

Max Speed: 14 Knots (16.11 MPH)

TABLE OF CONTENTS

OVERVIEW	3
SPECIFICATIONS	4
Basic Information	4
Dimensions	4
Speed, Capacities and Weight	4
Accommodations	5
Hull and Deck Information	5
Engine Information	5
GALLERY	6
DETAILED DESCRIPTION	10
CONTACTS	13

OVERVIEW

Sea Gypsy offers an exceptional opportunity to own a distinguished Benetti Delfino 93, an Italian-built luxury motor yacht that has enjoyed only two owners since her launch. Meticulously maintained and benefitting from a recent comprehensive refit, she is presented in turn key condition and radiates the hallmarks of careful stewardship. Commercially compliant and available for inspection by appointment in Viareggio, Italy, Sea Gypsy epitomizes a refined Mediterranean superyacht ready for immediate enjoyment.

Her intelligent interior configuration places the owner's suite on the main deck, while the lower deck accommodates three additional cabins, including a full beam VIP with an adjacent lounge that can be effortlessly transformed into an alternative second master—offering uncommon versatility for family cruising or discreet charter operation. Outdoor life is equally generous: a sweeping flybridge sun deck with a jacuzzi, aft dining on the main deck, and a foredeck lounge ideal for sunbathing and sunset repose complement an elegant interior dining area and a capacious main saloon. With four roomy guest staterooms, Sea Gypsy fuses Benetti pedigree with comfort and style in a timeless motor yacht for sale.

SPECIFICATIONS

Basic Information

Category:
Motor yachts

Year Built:
2011

Model Year:
2011

Country:
Italy

Dimensions

LOA:
93' 0" (28.50 m)

Beam:
23' 0" (7.03 m)

Min Draft:
6' 3" (1.90 m)

Max Draft:
6' 9" (2.05 m)

Speed, Capacities and Weight

Cruise Speed:
13 Knots (14.96 MPH)

Water Capacity:
607.6 Gallons

Max Speed:
14 Knots (16.11 MPH)

Fuel Capacity:
4226.75 Gallons

Gross Tonnage:
152 Pounds

Accommodations

Sleeps:

8

Crew Cabin:

2

Total Heads:

5

Crew Berths:

4

Hull and Deck Information

Hull Material:

Fiberglass and Plastic Yachts

Hull Designer:

Azimut Benetti Spa

Deck Material:

GRP

Interior Designer:

Carlo Galeazzi

Hull Configuration:

Full Displacement Planing Hull

Engine Information

Engines:

2

Fuel Type:

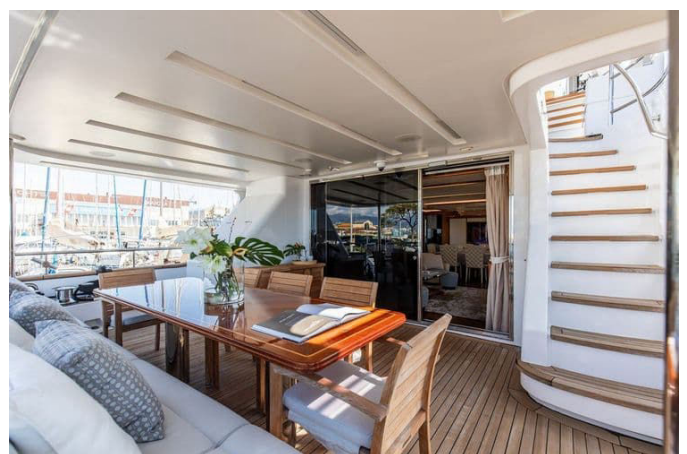
Diesel

Manufacturer:

MTU

GALLERY









DETAILED DESCRIPTION

Full specification

Conceived by Stefano Righini and brought to life by Azimut Benetti Spa – Benetti Division, this Benetti motor yacht launched in 2011 embodies refined Italian naval architecture and craftsmanship, measuring 28.50 m in length (93'6"), with a 7.03 m beam (23'1") and a 1.90 m draft (6'3"). The owner and guest interiors, curated by Carlo Galeazzi, offer an elegant and welcoming environment while the crew areas, designed by Benetti, ensure efficient service and comfort for a dedicated crew of three accommodated in two cabins. Accommodation is arranged across four cabins to sleep eight guests, with up to twelve guests cruising onboard when desired. Performance is robust and reliable, driven by twin MTU 8V2000 M72 main engines rated at 720 kW at 2250 rpm, transmitting power through Reintjes WAF 344 gearboxes to Benetti Design propellers, while auxiliary power is provided by two Kohler generators of 40 kW each (230 VAC, 50 Hz). Long range autonomy is supported by an Idromar MC3J water maker producing 180 l per hour (47,55 US gallons), and close quarters handling is assisted by a 30 kW hydraulic bow thruster (40 Hp). Sea keeping and onboard comfort are elevated by stabilizers offering both Navigation Stab and Zero Speed operation at anchor. At half load displacement the yacht reaches a maximum speed of 14.0 knots, cruises comfortably at 13.0 knots at eighty five percent of maximum power, and delivers a range of 1,500 nautical miles at an economical 10 knots with one diesel generator running. Built to exacting standards, the yacht carries a CE mark (module F) certified by Registro Italiano Navale (R.I.Na.), with optional classification and compliance packages including R.I.Na. Rules for Classification of pleasure yachts C HULL • MACH Y and an MCA Compliance Certificate issued by R.I.Na. Her hull and deck are constructed entirely in GRP (Glass Reinforced

Plastic), employing single skin or sandwich construction according to zone, while the superstructure is GRP with a cored sandwich structure; double bottom tanks above the keel are integrated into the hull and house the fresh water tank, the fuel tanks, and the sanitary tank. Onboard climate is managed by a Heinen & Hopman air conditioning system engineered to precise design conditions for summer and winter operation, ensuring interior comfort under extreme outside temperatures and humidity. Deck outfitting is specified for dependable, effortless operation with Lofrans windlasses and foot operated Lofrans capstans managing a ground tackle suite of high holding power anchors each 98 kg in galvanized steel (HHP) connected to two galvanized steel chains of 12,5 mm diameter with stud link built to DIN 766, U2 grade, each 110 m in length; a hydraulic, retractable telescopic gangway with three stages serves the stern, and a 4.5 m tender is stowed in the aft garage alongside space for water toys. The electrical installation, wiring, and fixtures are fully CE compliant and the yacht is delivered with a dual system comprising 230 VAC, three phase, 50 Hz and 24 VDC, with a 60 Hz configuration available as an option. Navigation and communications in the wheelhouse are comprehensive and professional, integrating a Simrad Nobeltec radar with gyro compass, rudder angle indicator and a Riviera White Star BW 3 magnetic compass of 130 mm diameter, a Wind Multi NMEA log/wind system, Navicontrol Mod AP3003 autopilot, BCS rudder tiller with a take over system, GPS positioning and a PC based chart system running Nobeltec Admiral 10 Max Pro software with ARPA functionality; analog instruments by Barigo provide clock, barometer and thermometer readouts while communications include Sailor 4801 DSC VHF (D Class), a Telular SX 5E GSM/GPRS phone and an RX TDA30 PABX. Entertainment is thoughtfully integrated throughout the yacht with an antenna Naval Nargentus for aerial TV and AM/FM radio reception and the "BEST" Integrated Entertainment System; the main saloon and Owner's Suite mirror each other with Denon sintoamplifier mod. 2809, Client BEST HD, a 42" LCD TV, in ceiling speakers,

integrated Philips Pronto remote control and a Denon iPod docking station, while the dining area, sun deck and external MD areas each enjoy dedicated marine audio driven from quality amplifiers and speaker systems and the VIP and Guest Cabins, Captain's Cabin, Crew Cabin, Galley/Crew Mess and even the wheelhouse are equipped with Teac System DR H300 units, 19" LCD TVs where noted, in ceiling speakers and integrated controls to ensure entertainment and communication for all aboard. Domestic systems are specified for extended cruising with a dedicated laundry equipped with a washing machine, a drying machine in the main saloon, and a galley fitted with a 75 cm cooking top, exhaust hood, 90 cm oven, microwave, dishwasher, garbage macerator, fridge and freezer, complemented by an external sun deck bar with minifridge and ice maker for effortless alfresco living.

CONTACTS

Shestakov Yacht Sales is a brokerage company specializing in the sale and service of yachts worldwide. The company offers services for buying and selling both new and used motor yachts, sailing vessels, and luxury superyachts. They also provide yacht registration, insurance, technical maintenance, crew selection, and charter organization services across the U.S., Canada, Latin America, the Caribbean, and the Bahamas.

The founder and lead broker of the company is Andrey Shestakov, a licensed and certified expert with extensive experience in marine engineering and shipbuilding.

The company has an extensive network of partnerships with major yacht manufacturers worldwide and provides services in multiple languages, including Russian, Ukrainian, Spanish, and English. The office is in Dania Beach, Florida, USA.

For more information and to view available yachts, you can visit the company's official website: <https://shestakovyachtsales.com>

Contact details

Phone: +1(954)274-4435

Email: andrey@shestakovyachtsales.com

Address



1380 Weeping Willow Way, Hollywood,
Florida 33019