



ATB SHIPYARD CUSTOM MOTOR YACHT - ATB SHIPYARDS



Builder: [ATB SHIPYARDS](#)

LOA: 94' 0" (28.80 m)

Year Built: 2005

Beam: 24' 0" (7.30 m)

Model: Custom Trawler Motor Yacht

Min Draft: 8' 10" (2.70 m)

Price: \$697,111.12 USD Subject to change.

Max Draft: 8' 10" (2.70 m)

[See full listing on our website](#)

Location: Barcelona, Spain

Cruising Speed: 9 Knots (10.36 MPH)

Max Speed: 12 Knots (13.81 MPH)

If you would like to buy a yacht **ATB SHIPYARD CUSTOM MOTOR YACHT - ATB SHIPYARDS** or would like help answering any questions concerning purchasing, selling, or chartering a yacht, please call **+1(954)274-4435** or click here on <https://shestakovyachtsales.com>

TABLE OF CONTENTS

OVERVIEW 3

SPECIFICATIONS 5

 Basic Information 5

 Dimensions 5

 Speed, Capacities and Weight 5

 Accommodations 6

 Hull and Deck Information 6

 Engine Information 6

GALLERY 7

DETAILED DESCRIPTION 22

CONTACTS 23

OVERVIEW

ATB Shipyard 28.8m Explorer Motor Yacht — 2005

Launched in 2005 by ATB Maroc, this 28.8 metre explorer motor yacht is a purpose-built long-range cruiser, conceived for owners who value dependability, comfort and true bluewater capability above top-end speed. Her true displacement hull and substantial internal volume combine with stout engineering to create a vessel designed for extended passages and comfortable liveaboard life, embodying the very character of an explorer and displacement motor yacht.

Every system has been attended to with care: a programme of regular servicing and preventative maintenance has preserved engines, generators and hotel systems to a standard suited for serious passage-making rather than occasional day use. The mechanical condition is robust throughout, presenting a turn-key platform that does not demand significant immediate expenditure. Propulsion comes from durable Mitsubishi diesel engines, engines known for their longevity, which allow a relaxed cruise of approximately 9 knots and yield an impressive range on the order of 3,100 nautical miles, making her well suited to ocean crossings, archipelago exploration and prolonged stays at anchor. Comfort and seakeeping are enhanced by Quantum zero-speed stabilizers, delivering perceptible calm both underway and when at rest.

Accommodation is generous and intelligently laid out: four guest cabins, each with en-suite facilities, welcome up to eight guests, while separate crew quarters ensure operational independence. The interiors are bright and voluminous, striking a warm equilibrium between refined finishes and practical functionality, equally appropriate for private family use or boutique charter operations, in keeping with luxury expectations for the explorer segment. Built with a workboat-inspired expedition ethos, she features aluminium construction, multiple generators, capacious tanks and professional-grade

systems, offering a level of rugged reliability that places her comfortably among trawler and explorer yacht alternatives. Properly used and diligently maintained, this ATB presents clear evidence of care. For buyers seeking a genuine expedition motor yacht with proven range, comfort and steadfast reliability, she represents exceptional value and true bluewater readiness.

SPECIFICATIONS

Basic Information

Category:
Motor yachts

Year Built:
2005

Sub category:
Trawler

Country:
Spain

Model Year:
2005

Dimensions

LOA:
94' 0" (28.80 m)

Beam:
24' 0" (7.30 m)

Min Draft:
8' 10" (2.70 m)

Max Draft:
8' 10" (2.70 m)

Speed, Capacities and Weight

Cruise Speed:
9 Knots (10.36 MPH)

Fuel Capacity:
4226.75 Gallons

Max Speed:
12 Knots (13.81 MPH)

Accommodations

Sleeps:
8

Crew Cabin:
1

Total Heads:
4

Crew Berths:
3

Hull and Deck Information

Hull Material:
Steel Yachts

Hull Designer:
ATB SHIPYARDS

Deck Material:
Steel

Interior Designer:
Vaton Design

Hull Configuration:
Fast Displacement Hull

Engine Information

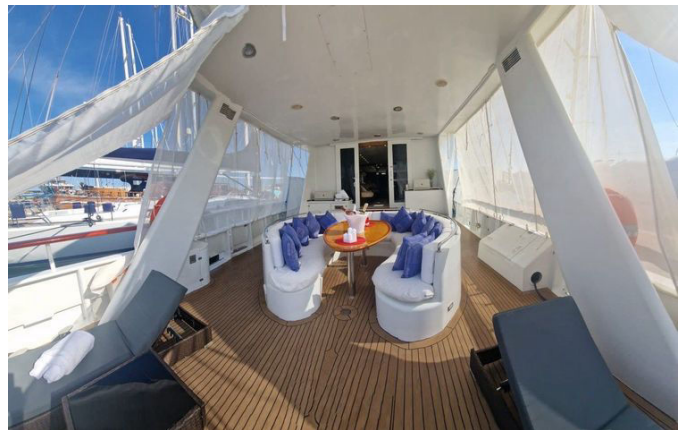
Engines:
1

Engine Type:
Inboard

Manufacturer:
MITSUBISHI

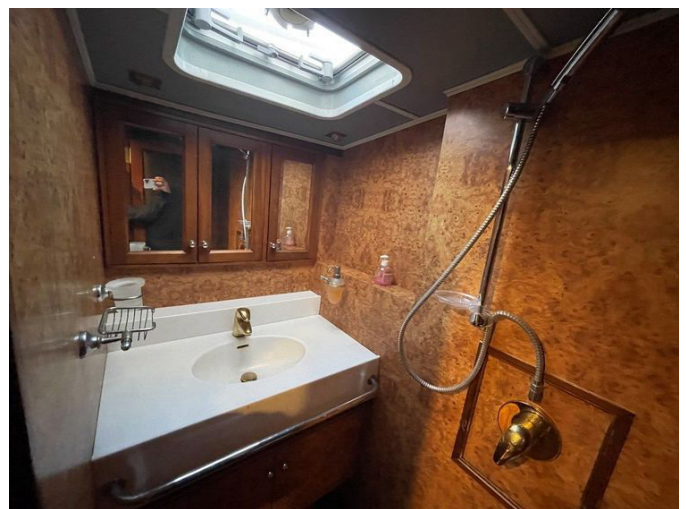
Fuel Type:
Diesel

GALLERY

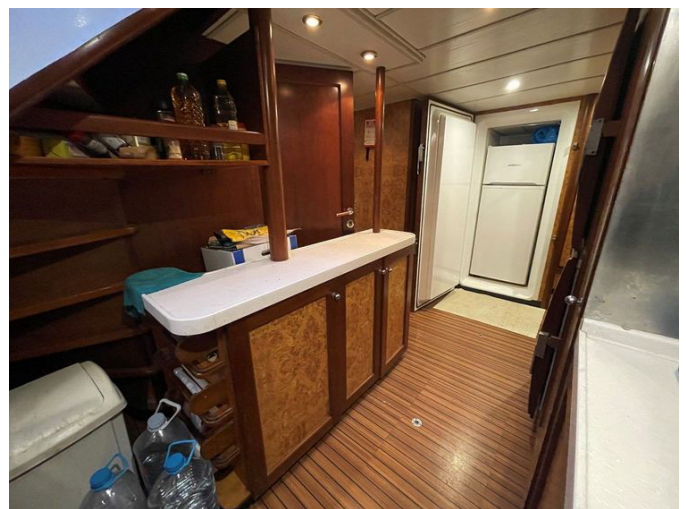




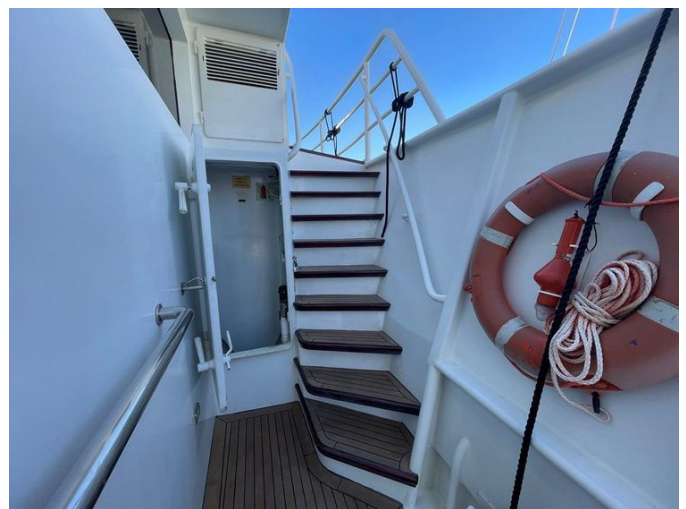


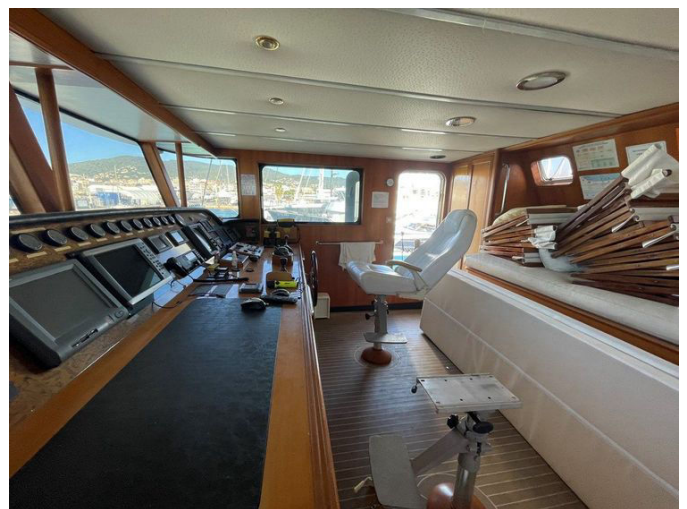
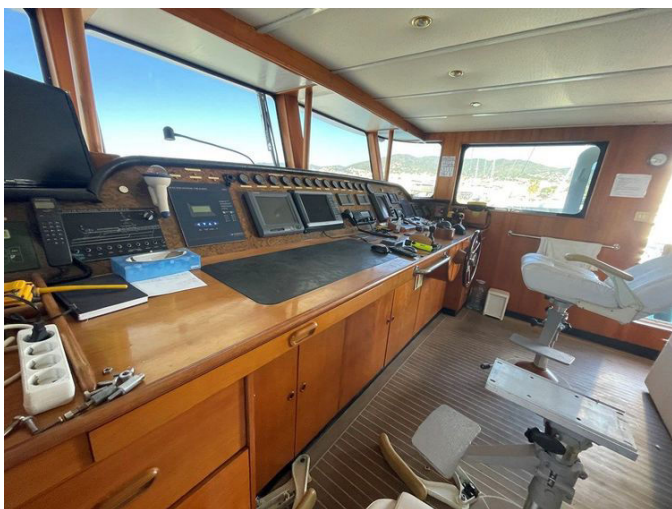
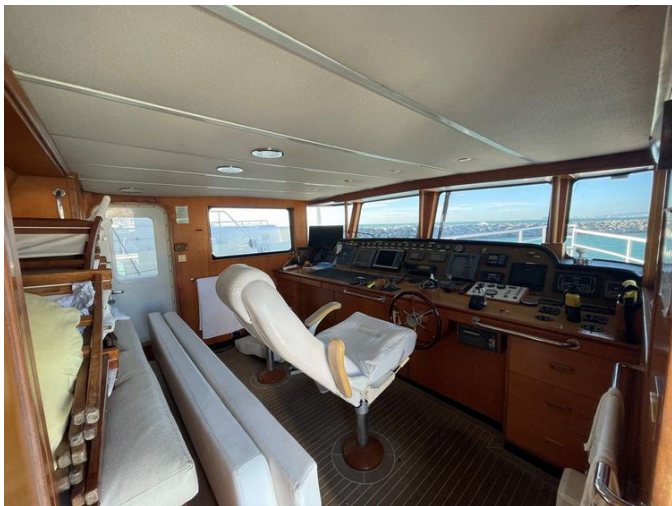


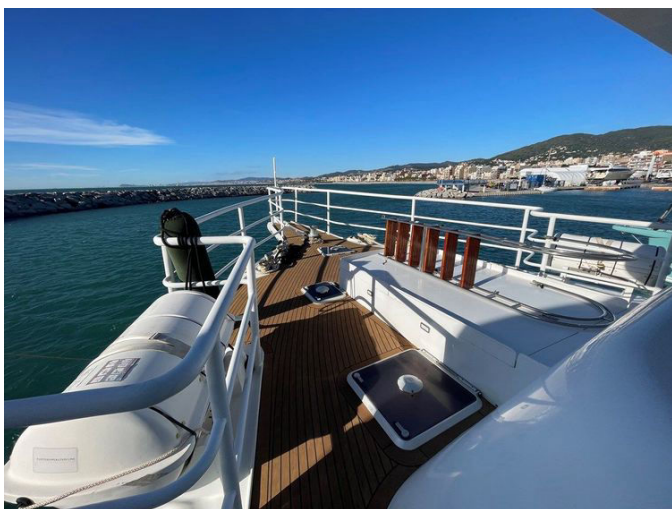




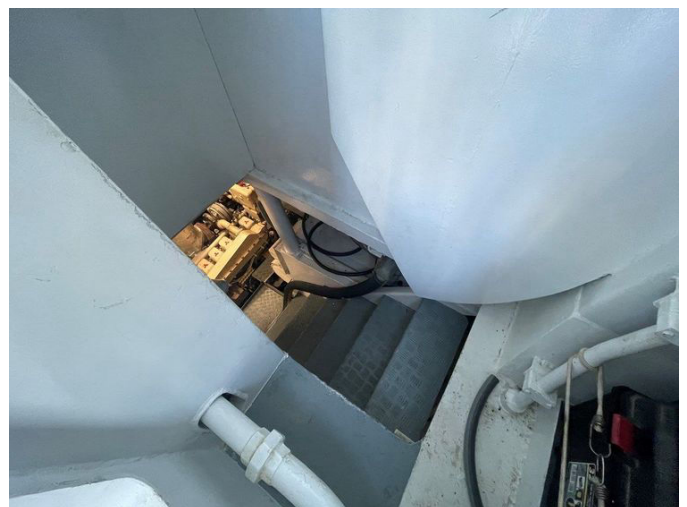
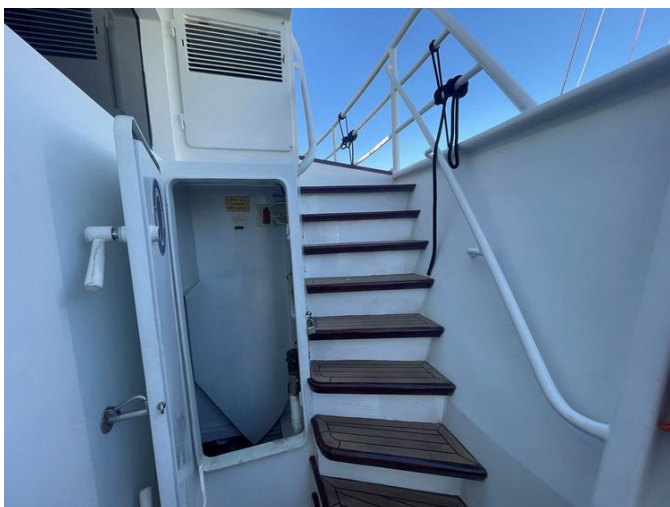




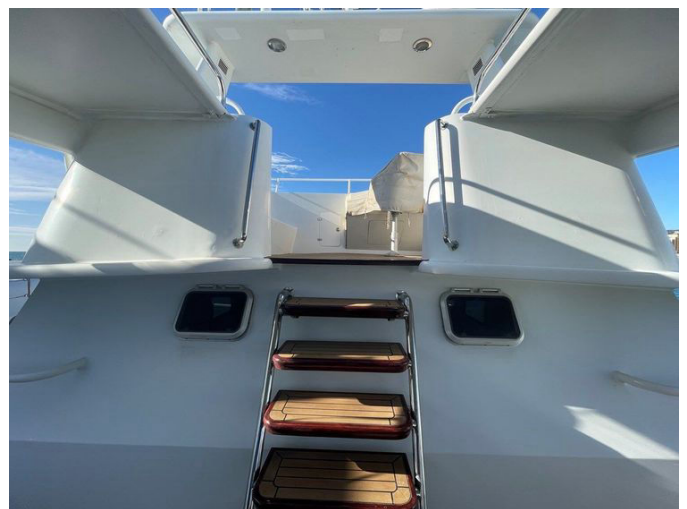
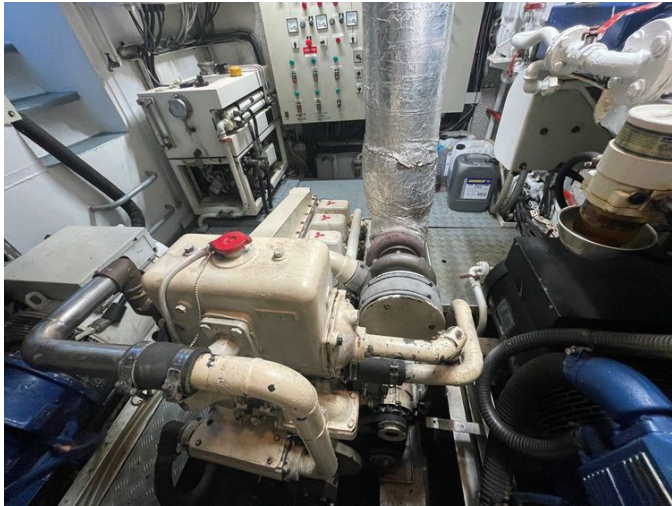














DETAILED DESCRIPTION

Features

A proven 28.8 m expedition motor yacht built by ATB Maroc, she is conceived with a full-displacement hull for comfortable, efficient long-range cruising. Her robust aluminum construction is engineered for extended use, while Mitsubishi S6R series diesel engines, delivering approximately 435 HP, are renowned for durability and longevity. At an economical cruising speed of around 9 knots, she offers an impressive range of approximately 3,100 nautical miles, and Quantum Zero Speed stabilizers elevate comfort both underway and at anchor. Four guest cabins, each with an en-suite bathroom, welcome up to eight guests, complemented by separate crew accommodation to support professional operation. Multiple generators provide excellent redundancy and genuine onboard autonomy, and the vessel has been diligently maintained with regular servicing of engines, generators, and all critical systems. Generous interior volumes and a practical, seamanlike layout make her equally compelling for private use or charter—an expedition-style yacht defined by reliability, comfort, and seaworthiness.

CONTACTS

Shestakov Yacht Sales is a brokerage company specializing in the sale and service of yachts worldwide. The company offers services for buying and selling both new and used motor yachts, sailing vessels, and luxury superyachts. They also provide yacht registration, insurance, technical maintenance, crew selection, and charter organization services across the U.S., Canada, Latin America, the Caribbean, and the Bahamas.

The founder and lead broker of the company is Andrey Shestakov, a licensed and certified expert with extensive experience in marine engineering and shipbuilding.

The company has an extensive network of partnerships with major yacht manufacturers worldwide and provides services in multiple languages, including Russian, Ukrainian, Spanish, and English. The office is in Dania Beach, Florida, USA.

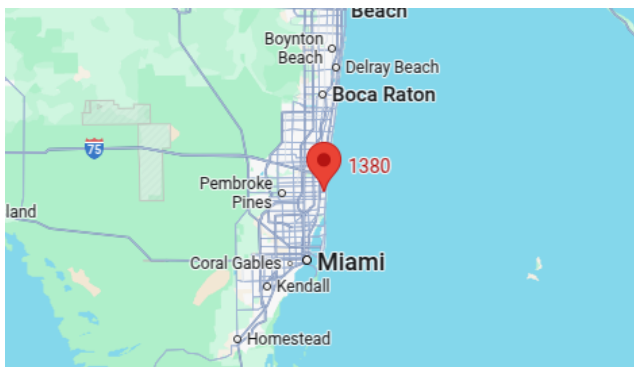
For more information and to view available yachts, you can visit the company's official website: <https://shestakovyachtsales.com>

Contact details

Phone: +1(954)274-4435

Email: andrey@shestakovyachtsales.com

Address



1380 Weeping Willow Way, Hollywood,
Florida 33019