



SEA METRI V - AMER YACHTS



Builder: [AMER YACHTS](#)

LOA: 94' 0" (28.65 m)

Year Built: 2017

Beam: 20' 0" (6.30 m)

Model: 94

Min Draft: 19' 11" (6.08 m)

Price: \$2,990,000 USD Subject to change.

Max Draft: 20' 6" (6.25 m)

[See full listing on our website](#)

Location: Fort Lauderdale, United States

Cruising Speed: 20 Knots (23.02 MPH)

Max Speed: 25 Knots (28.77 MPH)

If you would like to buy a yacht **SEA METRI V - AMER YACHTS** or would like help answering any questions concerning purchasing, selling, or chartering a yacht, please call **+1(954)274-4435** or click here on <https://shestakovyachtsales.com>

TABLE OF CONTENTS

OVERVIEW 3

SPECIFICATIONS 4

 Basic Information 4

 Dimensions 4

 Speed, Capacities and Weight 4

 Accommodations 4

 Hull and Deck Information 5

 Engine Information 5

GALLERY 6

DETAILED DESCRIPTION 18

CONTACTS 26

OVERVIEW

Sea Metri V, launched in 2017 by Amer Yachts, unfolds over 94 feet of sleek, purposeful profile. Born of the skilled hands at Permare Shipyard in San Remo, Italy, she carries the imprint of Amer Yachts' bespoke tradition, a family enterprise led by Fernando Amerio whose four decades of artisanal yachtmaking have produced more than 80 custom vessels. Built with exacting attention to balance and efficiency, Sea Metri V employs advanced weight-saving techniques and materials throughout, and rides on a lightweight planing hull that weighs 64 tons. Propulsion comes from three Volvo Penta D13-900 (hp) IPS 1200 engines with pod drives, a configuration which, according to the builder, delivers roughly 20% greater efficiency compared with similarly sized yachts fitted with larger engines and conventional shaft drives. The result is responsive handling, lively yet steady steering, and notably low noise and vibration: the captain records a comfortable cruising speed of 20 knots at 100 gallons per hour and a top speed of 25 knots at 135 gallons per hour, with just 780 hours on the engines.

Comfort and seakeeping are equally considered, with a SeaKeeper 16 stabilization system installed to dramatically reduce pitch and roll for exceptionally smooth passages. Meticulously maintained and presented in excellent condition, Sea Metri V is presently located in a prime boating area and represents an extraordinary opportunity to acquire a yacht that marries luxury with genuine performance. Prospective buyers exploring yacht sales in the vessel's current location will find in Sea Metri V a rare combination of pedigree, engineering, and on water poise.

SPECIFICATIONS

Basic Information

Category:
Motor yachts

Year Built:
2017

Model Year:
2017

Country:
United States

Dimensions

LOA:
94' 0" (28.65 m)

Beam:
20' 0" (6.30 m)

Min Draft:
19' 11" (6.08 m)

Max Draft:
20' 6" (6.25 m)

Speed, Capacities and Weight

Cruise Speed:
20 Knots (23.02 MPH)

Water Capacity:
528 Gallons

Max Speed:
25 Knots (28.77 MPH)

Fuel Capacity:
1849 Gallons

Accommodations

Total Heads:
6

Hull and Deck Information

Hull Material:

Fiberglass and Plastic Yachts

Hull Designer:

N/A

Deck Material:

Fiberglass

Interior Designer:

N/A

Hull Configuration:

N/A

Engine Information

Engines:

2

Engine Type:

Inboard

Manufacturer:

Volvo Penta

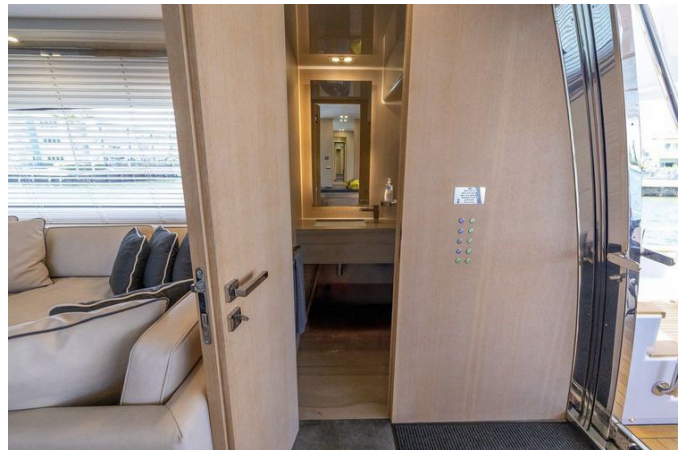
Fuel Type:

Diesel

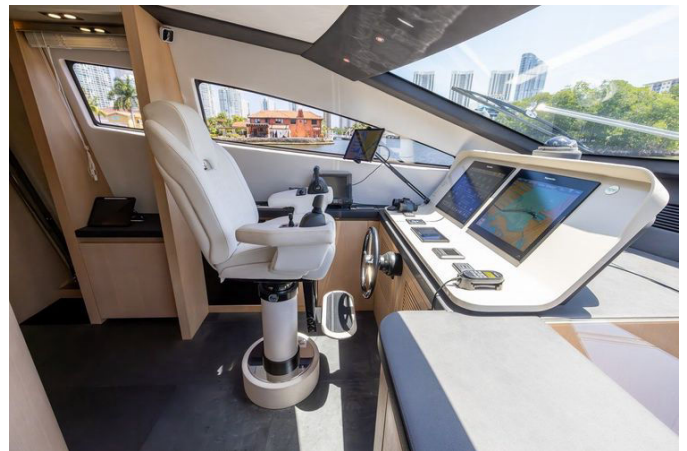
GALLERY

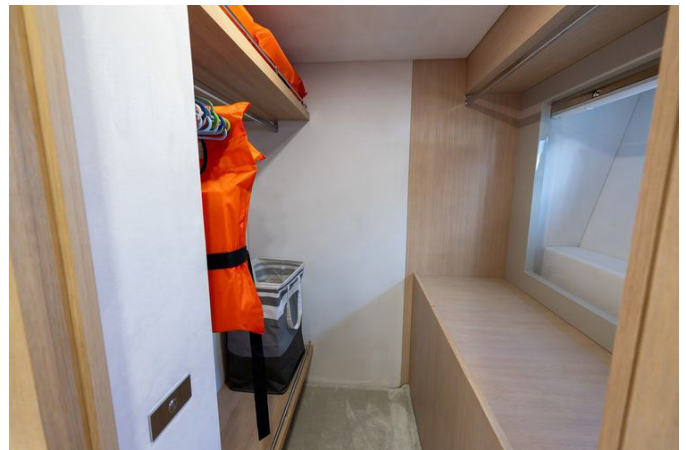


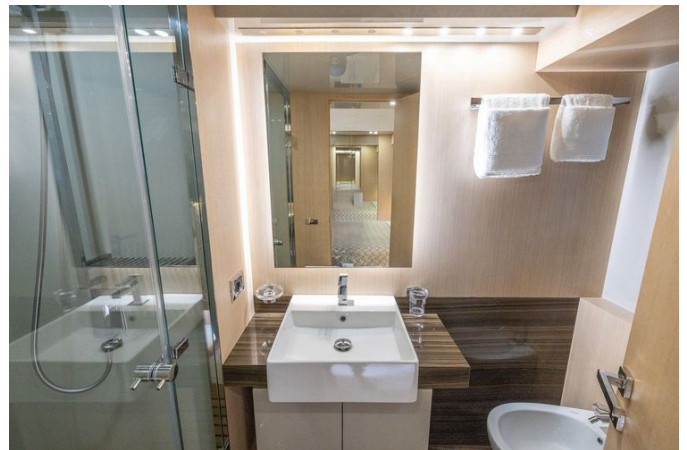




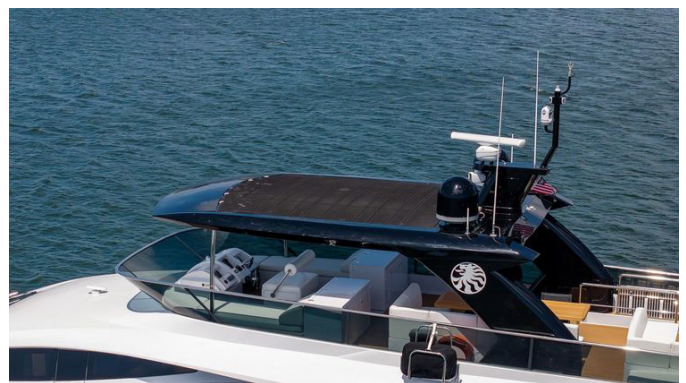


















DETAILED DESCRIPTION

Walkthrough

Stepping aboard the Sea Metri V is a seamless experience whether you choose the teak covered hydraulic swim and launch platform, the teak covered stern passerelle, or the six step MarQuipt ladder to starboard at the side door; the aft tender garage houses a twelve foot Rinieri inflatable tender powered by a fifty horsepower Suzuki four stroke outboard, and the aft cockpit is conceived for relaxation and entertainment with a sunbed, a dinette and a graceful stairway leading to the flybridge, while an engine control station sits conveniently to starboard and access to the engine room is to port just forward of the aft deck, and the teak side decks extend forward to embrace the bow, which is appointed with sun pads and storage boxes. Upon entering the salon you encounter a day head to starboard and a cabinet with a fridge and icemaker to port, and moving forward the space opens to opposing L shaped sofas and coffee tables that create a cozy yet elegant lounge; to starboard a stairwell descends to the two guest staterooms and the full beam master suite, while further forward the dining area comfortably accommodates eight guests and is complemented by a fifty five inch Samsung TV. The galley, placed forward of the dining area to starboard, is fitted with high end Miele appliances and is both practical and refined, and beyond it the wheelhouse presents a helm to port and a dinette with a Samsung TV to starboard to ensure functionality and comfort. Below decks the yacht offers a full beam guest cabin with opposing full size beds, providing ample space and privacy, with the captain's stateroom located forward of the guest stateroom to port and crew quarters with over and under bunks to starboard, and the flybridge stands as a highlight with a radar arch style hardtop and a retractable black fabric sunroof, a centrally located helm flanked

by opposing seating, aft cabinets to port housing a grill, induction cooktop, storage and fridge below and to starboard a cabinet with cutting board, sink and Volvo control station with icemaker, dishwasher and additional storage beneath; the flybridge continues aft with a dining area to port and an entertaining area further aft complemented by a small sunbed to starboard, the entire area enclosed in glass and secured by a stainless railing to ensure safety and panoramic views.

Features

The Sea Metri V is equipped with an impressive array of electronics and onboard systems that enhance navigation and comfort, with the helm featuring a Raymarine depth sounder and a sophisticated plotter setup of dual Raymarine GS195 nineteen inch displays complemented by an ES127 twelve inch display on the flybridge, radar capability provided by a four kW Raymarine system, entertainment handled by a Harmon Kardon DVD player and a Fusion MS AV750 radio serving the flybridge, cockpit and bow, and navigation aided by an integrated Volvo/Garmin autopilot alongside Raymarine log speedometer and wind speed and direction indicators, compasses at helm and flybridge and GPS support from Raymarine, while a Raymarine 260 VHF system provides communication at both helm and flybridge and Samsung TVs of various sizes deliver onboard visual entertainment. Inside, comfort is assured by a full air conditioning system, battery charger and a MaxPower CT 325 bow thruster, and culinary and domestic needs are met with a deep freezer, dishwasher, microwave oven and oven alongside a refrigerator, with practical systems such as an electric bilge pump, electric head and a fresh water maker, and stability provided by the Seakeeper 16 system. Electrical equipment includes a shore power inlet and an inverter with power supplied by two Kohler 28 kW generators, recorded with one at 1737 hours and the other at 1588 hours, and outside the yacht is arranged for leisure with a

cushioned cockpit and table, hydraulic bathing platform, hydraulic gangway and swimming ladder, teak decked cockpit and sidedecks and a fourteen foot Ranieri/Cayman One Luxury tender stowed in the tender garage, while additional luxuries such as a steam sauna and underwater lights underscore the vessel's appeal.

Deck/swim platform/tender garage

The Sea Metri V presents a meticulously designed deck that blends functionality with luxury: the teak covered hydraulic swim platform with swim ladder grants effortless water access, the hydraulic passerelle to starboard ensures smooth boarding and the tender garage with hydraulic door houses a twelve foot Rinieri inflatable tender powered by a fifty horsepower Suzuki four stroke outboard ready for exploration, while the aft deck is elegantly finished with teak covered steps and decking, complemented by port and starboard stern winches by Italwinch and fresh water compartments, and sun pads aft provide an ideal place for relaxation with a teak dining table seating five guests for alfresco meals. To starboard the engine control station is fitted with a Raymarine A65 display, a Volvo control panel, a Volvo joystick and bow thruster control for precise maneuvering, the stairs to the flybridge are located to starboard for easy access, a stainless steel and glass sliding door opens to the main salon and an access door to port leads to the engine room, while the transom is fitted with underwater lights that add ambiance and visibility at night, the side decks and bow are laid in teak with the bow featuring sun cushions and storage boxes, and anchoring is effortless with an electric anchor winch by Verricello Italwinch operated from a push button panel and a Max Power bow thruster assisting docking.

Main salon/dining

The main salon and dining area of the Sea Metri V is a harmonious blend of elegance and functionality, where to port a day head with toilet, sink and vanity is positioned for convenient guest use and adjacent to it a cabinet houses an icemaker and fridge for refreshments, and the salon itself is furnished with opposing L shaped sofas and coffee tables upon elegantly tiled flooring with a plush rug beneath the seating to add warmth, while the dining table, the centerpiece of the space, seats eight guests and is framed by custom cabinets on both the port and starboard sides that provide ample storage and refined detail, a fifty five inch Samsung TV is positioned forward of the dining table for entertainment and pleasure, and stairs to starboard lead down seamlessly to the master suite and two guest staterooms, creating an effortless transition from social spaces to private quarters.

Galley

The galley of the Sea Metri V is a chef's dream, centered on a full size GE refrigerator in a side by side configuration with a convenient freezer drawer to ensure ample storage, and elevated by the Miele suite which includes a microwave oven, an electric oven, an induction stovetop and a Miele hood that maintain a fresh environment, while a Miele coffee machine caters to connoisseurs, a double stainless sink offers practicality, a Miele dishwasher ensures effortless cleanup and a side door to the deck provides ventilation and convenient access, making the galley both highly functional and elegantly appointed for preparing meals while enjoying the sea.

Wheelhouse

The wheelhouse of the Sea Metri V is a masterfully designed command center

that balances advanced technology with comfort: entry and exit to the side deck aft are provided by a convenient side door, to starboard a dinette creates a comfortable crew space with a Samsung TV for entertainment, and the captain's helm to port features a full console and a custom Besenzoni seat for ergonomic support, with navigation aided by two Raymarine GS195 nineteen inch multifunction displays and Volvo Penta engine start/stop displays for port, starboard and center engines placed for optimal control, augmented by a spotlight remote, Volvo Penta screen and SeaKeeper control, while navigation is further supported by a compass and a Raymarine VHF 260E and the helm is equipped with Volvo controls, a Raymarine control, a Volvo joystick and bow thruster for precise maneuvering; advanced communications and navigation are enhanced by Furuno displays including the Furuno NX 700 and Furuno Inmarsat, making the wheelhouse a state of the art hub for any voyage.

Master stateroom

The master stateroom of the Sea Metri V is a luxurious full beam retreat designed for comfort and elegance, featuring a king sized bed with nightstands and reading lights, a functional desk to starboard with upholstered chairs and a walk in closet for generous storage, built in cabinets to port, and an ensuite head that showcases a double sink vanity, additional built in cabinets and a glass enclosed rainforest shower with both a toilet and a bidet, while entertainment is provided by a forty nine inch Samsung TV, making the master suite a serene and sophisticated sanctuary for rest and rejuvenation.

Guest staterooms (port & starboard)

The guest staterooms on the Sea Metri V, situated to both port and starboard, are crafted to offer comfort and style, each presenting a queen sized bed with

nightstands and reading lights plus a hanging closet for storage, and each featuring an ensuite head thoughtfully appointed with a toilet, bidet, single sink, vanity, cabinets and a walk in shower for private convenience, while entertainment is provided by a forty three inch Samsung TV in each cabin, ensuring a serene and refined environment for guests.

Bow guest cabin

The bow guest cabin of the Sea Metri V is a spacious full beam retreat featuring opposing full size beds, each with a single nightstand and reading light, hanging closets on either side for generous storage, and an ensuite head to starboard appointed with a toilet, bidet, single sink, vanity, cabinets and a walk in shower, while to port a steam sauna offers a rejuvenating spa experience and entertainment is provided by two thirty two inch Samsung TVs, creating a luxurious and private forward guest accommodation.

Captain & crew cabins

The captain and crew cabins aboard the Sea Metri V are thoughtfully arranged to provide comfort and practical functionality, with the captain's cabin to port featuring a twin bunk, nightstand and hanging closet plus a twenty four inch Samsung TV and a Raymarine A65 display for navigation and leisure, while the crew cabin to starboard offers over and under bunks, a nightstand and a closet and is equipped with a Pioneer tuner and speakers as well as a Raymarine A65 display, and the crew's ensuite head includes a toilet and bidet combo, sink, vanity and shower, ensuring the crew enjoys a well appointed living space to perform their duties effectively.

Fly bridge

The flybridge of the Sea Metri V is a sophisticated and versatile space where the central helm is equipped with a comprehensive suite of controls and displays including a compass, Raymarine ES127 multifunction display, dual Volvo screens and a Raymarine I70 display, and features such as a bow thruster, horn, Volvo control panel, searchlight control, Fusion MS AV750 stereo, Volvo engine controls, Volvo joystick, Raymarine VHF 260 and a hardtop sunroof control ensure the captain has every tool for smooth operation, while opposing seating to port and starboard provides comfortable places for guests and entertainment units are thoughtfully arranged with to port an electric grill, stainless induction cooktop, cutting board, storage and an Isotherm refrigerator and to starboard a cutting board, stainless sink, Volvo control and joystick with an icemaker, dishwasher and additional storage below, and dining and relaxation are catered for by two teak dining tables, an L shaped seating area to port and a U shaped seating aft to port with a teak table and a lounge to starboard, access to the cockpit via a stairwell to starboard is simple and safety is ensured by two eight man life rafts by Eurovinil mounted to the port and starboard rails, while the flybridge is capped by a radar arch hardtop with a retracting canvas sunroof and antenna mast that combine functionality with style.

Engine room, mechanical & electrical equipment

The engine room of the Sea Metri V is a powerhouse of advanced engineering, centered on triple Volvo Penta D13 900 IPS1200 engines with pod drives that deliver exceptional performance and efficiency, supported by two Kohler 28 kW generators that provide robust electrical power, while stability is assured by the SeaKeeper 16 stabilization system and maneuverability enhanced by the Max Power CT325 electric bow thruster, water independence achieved with

an Idromar MC3JS watermaker producing 220 liters per hour, anchoring facilitated by a Verricello Italwinch anchor winch and Italwinch stern line winches on both port and starboard, and safety ensured through a comprehensive pump arrangement including central bilge and fire pumps, manual bilge and diesel pumps and five Rule 2000 submersible bilge pumps, with sewage and grey water discharge pumps by Gianneschi and a Marco oil gear pump further supporting operations. Electrical systems are underpinned by Mastervolt Chargemaster battery chargers dedicated across the vessel — two for service, three for engines, one for the generator, one for the bow thruster and one for the radio — while inverters by Mas Sine power the kitchen fridge and audio video systems and a Glendinning CM 7 shore cable provides seamless shore connectivity, and a steam generator supplies the forward cabin steam spa, together composing a comprehensive mechanical and electrical suite that underlines the Sea Metri V's commitment to superior yachting performance.

Disclaimer

The Company presents the details of this vessel in good faith, striving to provide accurate and comprehensive information; however, it cannot guarantee or warrant the accuracy of this information nor assure the condition of the vessel, and prospective buyers are encouraged to engage their agents or surveyors to thoroughly investigate and validate any details they deem necessary, with the understanding that this vessel is offered subject to prior sale, price change or withdrawal from the market without notice.

CONTACTS

Shestakov Yacht Sales is a brokerage company specializing in the sale and service of yachts worldwide. The company offers services for buying and selling both new and used motor yachts, sailing vessels, and luxury superyachts. They also provide yacht registration, insurance, technical maintenance, crew selection, and charter organization services across the U.S., Canada, Latin America, the Caribbean, and the Bahamas.

The founder and lead broker of the company is Andrey Shestakov, a licensed and certified expert with extensive experience in marine engineering and shipbuilding.

The company has an extensive network of partnerships with major yacht manufacturers worldwide and provides services in multiple languages, including Russian, Ukrainian, Spanish, and English. The office is in Dania Beach, Florida, USA.

For more information and to view available yachts, you can visit the company's official website: <https://shestakovyachtsales.com>

Contact details

Phone: +1(954)274-4435

Email: andrey@shestakovyachtsales.com

Address



1380 Weeping Willow Way, Hollywood,
Florida 33019