

# TRANQUILITY IV - 94 FT LAZZARA MOTORYACHT 2001 - LAZZARA



**Builder:** [Lazzara](#)

**LOA:** 94' 0" (28.65 m)

**Year Built:** 2001

**Beam:** 23' 0" (7.01 m)

**Model:** 94ft

**Min Draft:** 6' 7" (2 m)

**Price:** \$2,499,000 USD Subject to change.

**Max Draft:** 19' 8" (6 m)

[See full listing on our website](#)

**Location:** Fort Lauderdale, United States

**Cruising Speed:** 19 Knots (21.86 MPH)

**Max Speed:** 25 Knots (28.77 MPH)

# TABLE OF CONTENTS

---

<b>OVERVIEW .....</b>	<b>3</b>
<b>SPECIFICATIONS .....</b>	<b>4</b>
Basic Information .....	4
Dimensions .....	4
Speed, Capacities and Weight .....	4
Accommodations .....	5
Hull and Deck Information .....	5
Engine Information .....	5
<b>GALLERY .....</b>	<b>6</b>
<b>DETAILED DESCRIPTION .....</b>	<b>15</b>
<b>CONTACTS .....</b>	<b>24</b>

## OVERVIEW

---

The 2001 Lazzara 94 motor yacht melds refined elegance with assured performance; set on a fiberglass semi-displacement hull she provides silky passagemaking, generous interior volume and broad deck areas ideal for entertaining. A classic luxury superyacht and cruising motor yacht conceived for comfort and grace, she invites lingering days at sea.

# SPECIFICATIONS

---

## Basic Information

---

**Category:**  
Motor yachts

**Year Built:**  
2001

**Model Year:**  
2001

**Country:**  
United States

## Dimensions

---

**LOA:**  
94' 0" (28.65 m)

**Beam:**  
23' 0" (7.01 m)

**Min Draft:**  
6' 7" (2 m)

**Max Draft:**  
19' 8" (6 m)

## Speed, Capacities and Weight

---

**Cruise Speed:**  
19 Knots (21.86 MPH)

**Water Capacity:**  
600 Gallons

**Max Speed:**  
25 Knots (28.77 MPH)

**Fuel Capacity:**  
4000 Gallons

**Gross Tonnage:**  
94 Pounds

## Accommodations

---

**Sleeps:**

8

**Crew Cabin:**

2

**Total Heads:**

5

**Crew Berths:**

3

## Hull and Deck Information

---

**Hull Material:**

Fiberglass and Plastic Yachts

**Hull Designer:**

Dick Lazzara

**Deck Material:**

Fiberglass

**Interior Designer:**

Lazzara Yachts

**Hull Configuration:**

Semi-Displacement

## Engine Information

---

**Engines:**

2

**Fuel Type:**

Diesel

**Manufacturer:**

MTU

# GALLERY





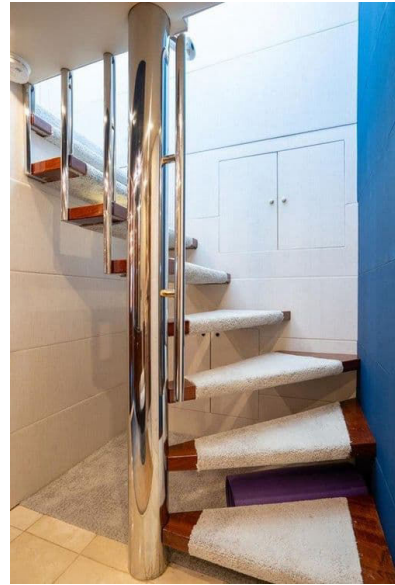














---

# DETAILED DESCRIPTION

---

## Description

---

Contemporary raised-pilothouse styling frames a gorgeous, very spacious interior aboard the stunning Lazzara Tranquility IV, delivering an unparalleled cruising experience. In 2023 she underwent a massive refit that elevated her interior to 2026 standards, and she has recently received her UPV certification, enabling worry-free charters with safety features to the highest standards. With a 23' beam and 4000 gallons of fuel, she is engineered for straight-line voyages north or south along the Florida coastline in exceptional comfort and is equally at home cruising the Bahamas. The layout provides three staterooms plus a private den/study that can comfortably sleep two additional guests, bringing the owner's party to eight; this extra room was available from the factory as either a study or a fourth stateroom with head and can readily be converted back to a stateroom. Signature features include a spacious flybridge with jacuzzi, bar and grill, a raised pilothouse with excellent sightlines, an elegant salon and a generous aft deck, transom pods for wave runners, and a full-beam, stand-up, walkaround engine room. Tranquility IV's country-kitchen-style galley is impressively large, anchored by a U-shaped dining table, while forward lie the crew quarters with two staterooms and two heads. Throughout the vessel, the decor is accentuated by hi-gloss cherry wood, with interior updates in 2014 that included one hundred percent new padded ceiling panels on both levels, completed by Lazzara Yachts, creating an atmosphere of timeless elegance and modern functionality.

## Vessel walkthrough

---

This elegant motor yacht delivers the ultimate cruising experience with a three-stateroom layout complemented by a private den/study that

comfortably sleeps two additional guests, bringing the owner's party to eight. Unplugged's features include a spacious flybridge with jacuzzi, bar and grill, a raised pilothouse with excellent sightlines, an elegant salon and a generous aft deck, transom pods with wave runners, and a full-beam stand-up walkaround engine room, while Tranquility IV boasts a vast country-kitchen-style galley with a large U-shaped dining table. Forward, the crew quarters provide two staterooms and two heads. The decor theme throughout the vessel is unified by hi-gloss cherry wood, heightening the sense of warmth and luxury in every space and tying together modern systems and timeless finishes for a cohesive onboard experience.

## Salon

---

Entering from the aft deck through the large single glass door integrated into a full-beam glass bulkhead, you are immediately impressed by the grand scale of the salon, a space as exquisite as it is comfortable. A large L-shaped white leather sofa with accent pillows anchors the room, facing a custom glass coffee table with a pull-out ottoman and bench, while to starboard a smaller matching L-shaped sofa invites conversation. The built-in entertainment center features a pop-up 50-inch Pioneer flat-screen LCD TV paired with a Sony Cinema Surround Sound System and digital audio/video control center, complemented by a DVD, a five-stack CD player, VCR, and AM/FM stereo receiver. Four occasional barrel chairs gather around a granite-topped table to create an intimate seating vignette, and DirecTV and satellite service are distributed through nine separate receivers via a KVH system installed new in 2011. Thoughtful media storage includes a 10-inch monitor, ensuring the salon is as functional as it is elegant.

## Galley

---

Accessed via the starboard companionway just forward of the pilothouse—with an on-deck powder room thoughtfully positioned along the way—the country-kitchen configuration is one of Lazzara’s signature strengths, pairing abundant storage with top-of-the-line appliances to deliver all the comforts of home. Polished granite countertops frame a Kitchen Aid Superba 48 side-by-side paneled refrigerator/freezer, a ceramic four-burner cooktop, a trash compactor, a GE Profile Performance microwave/convection oven, and a Bosch dishwasher. The generous dining area is centered around a large granite tabletop, while a 20-inch Sharp TV with an AM/FM receiver and DVD is seamlessly set into the forwardmost cabinetry. Maple Amtico flooring ties the space together with warmth and durability.

## Master stateroom

---

Located amidships on the lower deck, a wide-open stairway leads to a dramatic foyer serving all guest staterooms as well as the den/study, where GE stacked washer/dryer units are concealed behind panels topped by a black granite counter and mirror. Double doors open to the master, where a centered king-size bed dressed in a designer comforter with coordinating pillows, treatments, and accent pieces is flanked by built-in nightstands. His-and-hers armoires are joined by a full vanity between them, and a spacious walk-in closet with shelving and a personal safe answers every storage need; to starboard, a dresser, chair, and bookcase create a refined sitting area. A built-in entertainment center with a 32-inch Sony plasma flat-screen TV, an Aiwa CD/AM/FM stereo along the forward bulkhead, a DVD player, and DirecTV completes the suite. Aft and running athwartship, the en-suite his-and-hers head offers entrances to port and starboard and features a jacuzzi tub/shower for indulgent privacy.

## Den / study

---

Just off the master, forward and to starboard through a single-door entrance, the study is beautifully appointed. A convertible sleeper sofa, new in 2008, is matched by built-in end tables with lamps, while a Samsung 22-inch TV and an Aiwa CD/AM/FM stereo provide entertainment, complemented by an integrated PS2 system for video games and DVDs. A second entrance via the foyer enhances convenience and privacy when hosting additional guests.

## Vip staterooms

---

Two identical VIP staterooms lie to port and starboard forward of the foyer, each with its own en-suite bath featuring a single sink, toilet, and stall shower, supported by a linen closet and a granite countertop. Designer comforters with coordinating pillows, treatments, and accent pieces complete the refined presentation in both cabins.

## Crew quarters

---

Forward of the captain's cabin, the crew quarters provide over-and-under bunks with storage below, a dresser, and a cedar-lined hanging locker, all paired with a full entertainment system. In the common area, a GE washer/dryer combo supports efficient turnarounds between passages.

## Captains cabin

---

Forward of the galley and down to port, the captain's cabin offers a double bed with drawers beneath—comfortable for a couple—along with a cedar-lined hanging locker with a full-length mirror, dresser drawers, and a full entertainment system. A shared head with sink, toilet, and stall shower is

accessible from either the captain's cabin or the second crew cabin, optimizing privacy and practicality.

## **Pilothouse**

---

Five steps up from the starboard companionway, the raised pilothouse presents bamboo flooring underfoot, an elevated love seat to starboard, and a large desk, with a navigation station to port complete with chart table and storage. Centerline, two Stidd helm seats—one with electric controls for the captain—provide commanding visibility and comfort. Beneath the pilothouse are a full-sized top-loading Whirlpool freezer, a GE refrigerator, and a hot water heater, smartly concealed yet always within easy reach.

## **Flybridge**

---

Reached via four steps from the pilothouse through a sliding hatchway, the flybridge is a superb setting for entertaining and relaxation. Three Stidd helm chairs, new in 2011, overlook light tan indoor/outdoor carpeting also new in 2011, while an L-shaped lounge to starboard with a Corian tabletop and sun umbrella faces an L-shaped bar to port with a Corian countertop and three bar stools. Amenities include a U-Line refrigerator with a separate ice maker, a sink with hot and fresh water, and a two-burner Miele electric barbecue grill, with fitted covers for all exterior cushions, chairs, and the console. An integrated auto-rotation 2500 lb davit with tender-lift controls services a 15' Novurania hard-bottom, center-console tender powered by a 90 horsepower Yamaha four-stroke outboard motor (outboard new 2007). For comfort and safety, there is a depth finder, VHF, a cold shower, and an electric bilge pump panel with cover, as well as an eight-person Zodiac SOLAS-equipped life raft and an HCR-406 EPIRB. A full-sized Jacuzzi hot tub with outboard seating invites open-air indulgence, and controls for TRAC stabilizers (installed new in 2008)

are close at hand. The upper helm electronics package features a JVC twelve-disc CD changer with AM/FM stereo, a Garmin 5208 GPS/Plotter new in 2014, two ACR/RCL 100 remote spotlights, a Furuno Ed-2200 digital depth sounder, a Simrad AP20 autopilot, a Link Multi Speed & Distance Log, a Furuno flat-screen monitor for Nobeltec and Weather Channel, a Garmin VHF radio new in 2014, Latham Marine electric controls, TRAC stabilizer controls, Wesmar 50 HP hydraulic bow thruster controls, a Simrad 48-mile radar, a 24-volt anchor light, and a four-trumpet air horn.

## **Electronics and navigational equipment**

---

Her navigation and communication suite is comprehensive and redundantly specified, highlighted by TRAC digital stabilizers installed new in 2008 and Wesmar 50 HP hydraulic bow thruster controls. An ISIS computer system monitors all major ship's functions, with updates and new screens completed in 2009. Entertainment and communication are served by KVH SAT TV with nine receivers, new in 2011, along with alarms for engines, reduction gear, bilges, generators, and fire. Primary electronics include a Shipmate RS 8300 VHF, a 96-mile Simrad radar with ARPA function, a Northstar 6001 GPS plotter, an ICOM M 71C SSB radio, and a Robertson AP20 autopilot. Long-range capability is enhanced with a KVH Trace SAT phone and fax. Plotting and display are supported by a Simrad plotter with Nobeltec software new in 2009, a Simrad 10 full-function slave monitor new in 2009, and a Simrad Laser Plot sensor mouse, while weather and depth data are provided by a Furuno NX 500 Navtex weather receiver, a Furuno depth indicator, and a Furuno LCD depth sounder. A Panasonic hybrid phone system and a loud hailer, together with an EPIRB, complete the safety and communication package.

## Engine room

---

A full-beam, stand-up engine room underscores the yacht's serious engineering, centered on twin MTU DDC 12V2000 engines. Fuel is conditioned through dual Racor filters for the mains with vacuum gauges and single Racors for the generators, supported by a fuel priming system and an oil change system serving both mains and gens. Fire safety is ensured by a Sea Fire FM200 suppressant system, while robust exhaust and ventilation, two Glendinning cable masters, a workbench, compressed air, and fresh water reinforce serviceability. The space is organized over DynaPlate aluminum decking and includes TRAC digital stabilizers installed new in 2008 and a fuel polisher/spinner installed new in 2008. Freshwater autonomy is bolstered by a Sea Recovery Aqua Whisper watermaker rated at 1500 gpd with 320 hours. Control is precise via an engine electrical and mechanical stop/start panel with full manual gauge packages, and two AC fresh-water pumps (HEADHUNTER) keep domestic systems pressurized. A prop puller, PTOs on both mains for the thruster and anchor windlass, engine-driven bilge pumps off either main, four 110-volt electrical outlets, a closed-circuit TV monitoring camera, and overhead fishing rod retainers round out the specification, with emergency engine room access aft and outboard of the port engine for added safety.

## Fore deck

---

The foredeck is securely ringed by stainless steel bow rails and equipped with a fresh-water washdown and dockside fresh-water hookup. Bulwarks and freeing ports at the forward quarter and midships add seakeeping practicality, while lighting along all sides of the decks and bow enhances evening operations. A ship's bell with rope stands proud, and an extremely large stowage area/bow locker incorporates built-in bow seating and a sun pad. This cavernous locker houses shore cords, fenders, lines, cleaning supplies, a spare

anchor, and bow cushions. Extensive Awlgrip 2000 paintwork was completed in 2014, presenting a gleaming finish.

## **Sportdeck**

---

At the waterline, a teak swim platform serves as a launchpad for watersports, with teak stairwells to port and starboard, hoop rails, and mooring cleats for the tender. The lazarette and engine room are accessed through a watertight door at the center of the transom, flanked by two hydraulically activated pods port and starboard that cradle two SeaDoo GS wave runners. Additional storage below the swim platform is reached via opening stairs at the lazarette entrance and includes access to the rudder assemblies. A Brownie's dive compressor with only four hours of use is installed just outboard of the port SeaDoo, together with racks for four tanks, ready for spontaneous underwater adventures.

## **Aft deck**

---

Side-boarding gates to port and starboard, Marquipt Tide Ride stairs, and teak decking set a welcoming tone on the aft deck, where a large varnished-teak oval table and four wicker chairs encourage alfresco dining. Stereo speakers are discreetly installed in the overhead hardtop, and a refrigerator with ice maker keeps refreshments flowing. A fresh-water hot-and-cold shower and washdown, a stainless ladder with teak steps to the flybridge, and full engine and bow thruster control stations to port and starboard—neatly concealed in pilasters—underscore the deck's blend of luxury and utility.

## **Additional equipment**

---

Completing the deck and safety inventory, the yacht carries a Marquipt

boarding ladder and SeaStairs, a spare anchor with 250' of chain, fenders, and mooring lines. Ground tackle is handled by a Maxwell Nilsson 3500 hydraulic anchor windlass with a chain gypsy, two foot switches, and a chain lock. A water filtration system, fire extinguishers, a flare kit, and an ample set of life jackets and rings provide additional peace of mind.

## **Exclusions**

---

Owner's personal items and select art pieces are excluded from the sale; a comprehensive list of exclusions is available upon request.

## **Remarks**

---

Unplugged meets virtually every criterion set by discerning yachtsmen: she is in flawless condition, aggressively priced, and located in Miami Beach. From her impeccable presentation to her exhaustive specification, she is truly stunning inside and out.

## **Disclaimer**

---

The details of this vessel are offered in good faith but without guarantee or warranty of accuracy, nor any warranty of condition. Buyers are advised to instruct their agents or surveyors to investigate any particulars they wish to have validated. This vessel is offered subject to prior sale, price change, or withdrawal without notice.

# CONTACTS

---

Shestakov Yacht Sales is a brokerage company specializing in the sale and service of yachts worldwide. The company offers services for buying and selling both new and used motor yachts, sailing vessels, and luxury superyachts. They also provide yacht registration, insurance, technical maintenance, crew selection, and charter organization services across the U.S., Canada, Latin America, the Caribbean, and the Bahamas.

The founder and lead broker of the company is Andrey Shestakov, a licensed and certified expert with extensive experience in marine engineering and shipbuilding.

The company has an extensive network of partnerships with major yacht manufacturers worldwide and provides services in multiple languages, including Russian, Ukrainian, Spanish, and English. The office is in Dania Beach, Florida, USA.

For more information and to view available yachts, you can visit the company's official website: <https://shestakovyachtsales.com>

## Contact details

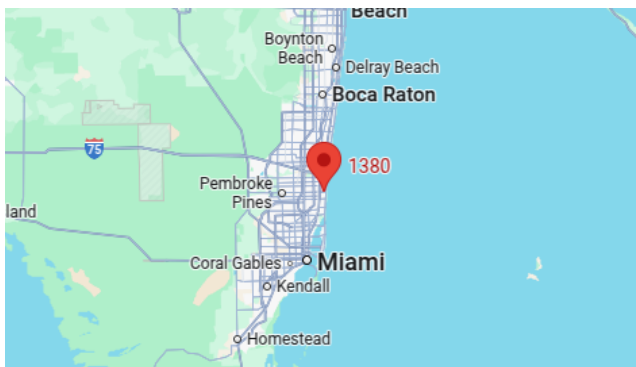
---

**Phone:** +1(954)274-4435

**Email:** [andrey@shestakovyachtsales.com](mailto:andrey@shestakovyachtsales.com)

## Address

---



1380 Weeping Willow Way, Hollywood,  
Florida 33019