

## NEX-T - HORIZON YACHTS



**Builder:** [Horizon Yachts](#)

**LOA:** 94' 0" (28.65 m)

**Year Built:** 2021

**Beam:** 23' 0" (7.11 m)

**Model:** FD92 Tri-Deck

**Max Draft:** 19' 8" (6 m)

**Price:** \$8,999,000 USD Subject to change.

**Cruising Speed:** 16 Knots (18.41 MPH)

[See full listing on our website](#)

**Location:** Key Largo, United States

**Max Speed:** 22 Knots (25.32 MPH)

---

# TABLE OF CONTENTS

---

<b>OVERVIEW .....</b>	<b>3</b>
<b>SPECIFICATIONS .....</b>	<b>4</b>
Basic Information .....	4
Dimensions .....	4
Speed, Capacities and Weight .....	5
Accommodations .....	5
Hull and Deck Information .....	5
Engine Information .....	6
<b>GALLERY .....</b>	<b>7</b>
<b>DETAILED DESCRIPTION .....</b>	<b>12</b>
<b>CONTACTS .....</b>	<b>17</b>

## OVERVIEW

---

NEX-T will be presented at the 2025 Fort Lauderdale International Boat Show, Face Dock, Slip 25 at the Hall of Fame Marina; the owner is receptive to select trades and welcomes serious offers.

NeX-T is a 28.66-meter (94-foot) Horizon FD92 tri-deck luxury motor yacht delivered in 2021, her exterior and interior conceived by Cor D. Rover to yield a striking contemporary silhouette and impeccably modern, superyacht-caliber living spaces. Built in GRP with a 7.11-meter (23-foot) beam and a 1.83-meter (6-foot) draft, she balances poised performance and seagoing comfort. Three teak-clad decks — including a skylounge and an expansive flybridge — provide generous, elegant areas for entertaining and relaxation, making this refined bluewater cruiser a versatile choice for those seeking style, volume, and true tri-deck capability.

---

# SPECIFICATIONS

---

## Basic Information

---

**Category:**  
Motor yachts

**Year Built:**  
2021

**Sub category:**  
Motor Yacht

**Country:**  
United States

**Model Year:**  
2022

## Dimensions

---

**LOA:**  
94' 0" (28.65 m)

**Max Draft:**  
19' 8" (6 m)

**Beam:**  
23' 0" (7.11 m)

## Speed, Capacities and Weight

---

**Cruise Speed:**

16 Knots (18.41 MPH)

**Water Capacity:**

400 Gallons

**Max Speed:**

22 Knots (25.32 MPH)

**Fuel Capacity:**

4000 Gallons

**Gross Tonnage:**

187 Pounds

## Accommodations

---

**Sleeps:**

6

**Crew Cabin:**

3

**Total Heads:**

8

**Crew Berths:**

5

## Hull and Deck Information

---

**Hull Material:**

Fiberglass and Plastic Yachts

**Hull Designer:**

Horizon

**Deck Material:**

GRP

**Interior Designer:**

Cor D Rover Design

**Hull Configuration:**

N/A

## Engine Information

---

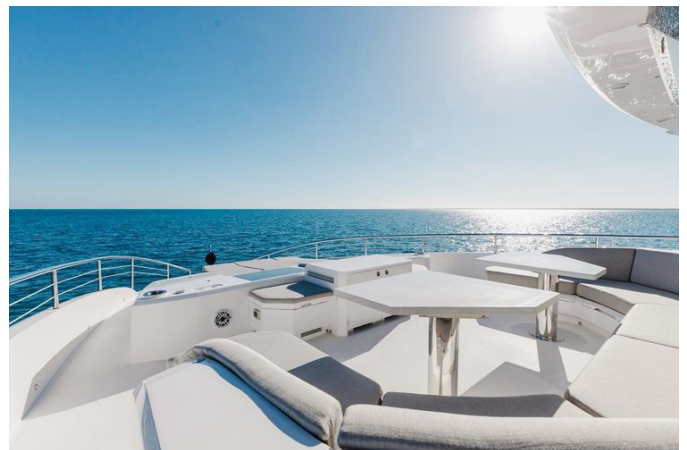
**Engines:**

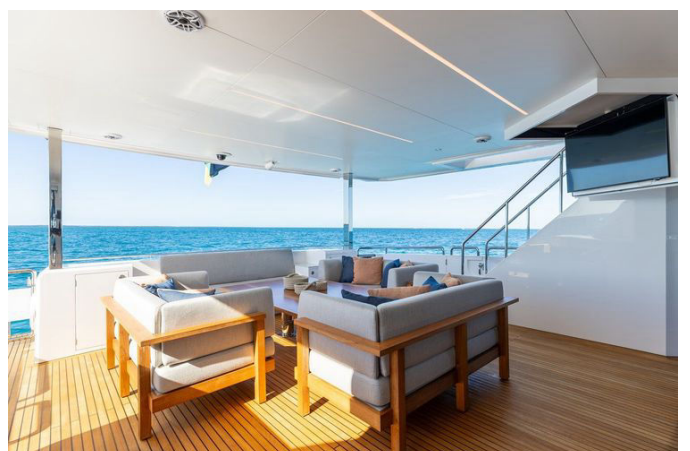
2

**Manufacturer:**

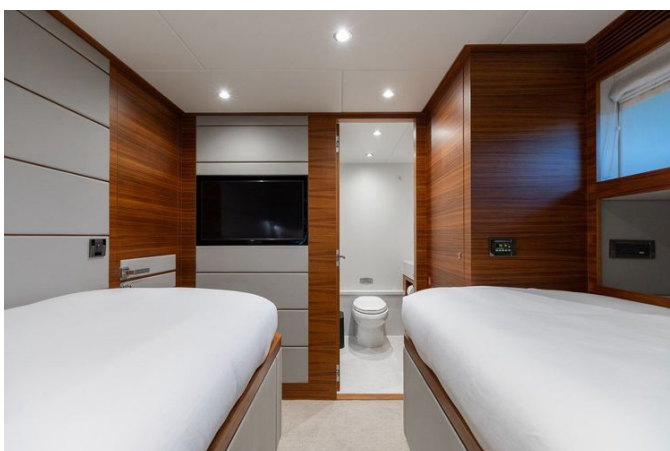
Caterpillar

# GALLERY











---

# DETAILED DESCRIPTION

---

## Introduction

---

Seller will entertain quality trades and invites all offers; NEX-T is a luxurious 28.66-meter (94-foot) FD 92 tri-deck motor yacht built in 2021 by Horizon and styled by Cor D. Rover, presenting a modern, meticulously finished exterior and interior that marry contemporary elegance with practical refinement. With a GRP hull and superstructure, a beam of 7.11 meters (23 feet) and a draft of 1.83 meters (6 feet), she balances poised performance and confident seakeeping while three expansive decks offer effortless relaxation and refined entertaining; three dedicated crew cabins accommodate five crew comfortably, twin Caterpillar C32B engines deliver 2,000 hp each and showed seven hundred seventy hours as of March 2025 with the main engines under warranty until October 17, 2027, a generator recorded eight hundred seventy hours as of March 2025, and all major systems were recently serviced during the Fall 2024 yard period to ensure turnkey readiness.

## Exterior deck & equipment

---

Thoughtfully engineered exterior features heighten comfort, safety, and versatility, with wind doors on both sides of the aft deck opening to the side walkways, two Maxwell VC2500 electric capstans and two anchor chain counters to streamline mooring and anchoring, and side boarding sea stairs to ease embarkation; foredeck sunshades together with a raised-back sunpad create a private lounging haven while an electric flip-down forty-three inch TV transforms the aft deck into an alfresco cinema complemented by a custom minibar with sink, refrigerator, and icemaker. The swim platform capacity has been increased from 1,500 lbs to 2,000 lbs with removable handrails for flexible tender handling, opening portholes provide practical ventilation

including four in the master stateroom and one in the galley, aft cleats were upgraded and reinforced for towing, the aft deck table converts to a hi-lo foldable configuration to suit any occasion, and a sink with storage is cleverly integrated along the forward port sidewalk with upgraded lockers for cleaning supplies and long poles; two salon side doors upgraded to sliding units with screens enhance airflow and access throughout.

## **Fly bridge & boat deck**

---

Commanding views meet total control at the flybridge where a full second helm is equipped with Garmin chartplotters, anchor chain counters, CAT engine displays, and VHF radios, while a freshwater deck wash keeps the area pristine and the helm's dedicated chain counter adds precision when setting or retrieving the hook, delivering a commanding yet user-friendly operating environment for extended cruising and confident maneuvering.

## **Skylounge & boat deck**

---

The skylounge and boat deck are curated for effortless indoor-outdoor living with a sunshade serving the Beach Club and a dedicated sunscreen protecting the aft deck, two hatches providing access to the pilothouse, and an electric sunshade that deploys at a touch; the upgraded tender crane with added storage simplifies tender and toy operations while black mesh screens shield the helm station windshields and a thirty-two inch flip-down TV sets the mood topside. Around the jacuzzi, a bar with three stools and a freshwater shower elevate open-air indulgence and an extra day head in the skylounge ensures comfort, while a hi-lo propane BBQ completes this elevated entertaining suite.

---

## Engine room & equipment

---

Below decks the machinery space is cool, clean, and cleverly arranged with dedicated engine room air conditioning to preserve optimal working temperatures, an ElectroSea system that combats marine growth and virtually eliminates barnacle maintenance, a robust workbench with sink and vise to support onboard maintenance, and a removable shelf above the chillers to maximize access and storage flexibility, all organized for efficient serviceability and long-term reliability.

---

## Electrical systems

---

Precision electronics and robust connectivity empower confident passagemaking with a wired ZF remote in the wheelhouse and on the aft deck that affords fingertip control of engines and the bow thruster, comprehensive communications and entertainment including SAT TV, a matching dummy dome, SAT phone, and a Starlink system housed within the dummy dome, shore power with Cable Master to simplify hook-up and an extra LED searchlight for night operations. The upgraded navigation suite adds a second radar, three GPSMAP 8624 twenty-four inch multifunction displays, a dedicated Garmin display for control and monitoring, the Maretron system, five Garmin GRID twenty remote input devices, six Garmin Reactor AP remote controls and a second VHF, while four floodlights illuminate the mast and boat deck and LED rope lights under the engines provide practical service lighting with a refined aesthetic.

---

## Mechanical systems

---

Comfort and control extend to the yacht's motion and utility systems with Imtra Zero Speed stabilizers fitted with a frequency drive to deliver at-anchor

poise, a dive compressor and an air hose run to the bow to serve watersports and maintenance, and a capable watermaker paired with a Spot Zero system to provide pristine onboard water for extended cruising, all arranged to enhance guest comfort and operational independence.

## Interior & exterior design & equipment

---

Every touchpoint reflects elevated specification and easy elegance, with all interior fabrics including throw pillows in Sunbrella and all exterior pillows weighted to stay perfectly poised, electric single-treatment curtains in the salon and electric single Roman blinds in both the master cabin and the skylounge. Accommodation is cleverly flexible with a sliding bed in the forward guest cabin, an extra captain's cabin with head and shower, and an additional forward stateroom also with head and shower, while the galley is comprehensively appointed with an extra full-height thirty inch Sub Zero freezer with ice maker, stainless-steel panels with handles for the refrigerator and freezer, and a full Horizon-branded tableware set for ten including dish holder, pots and pans, dishes, plates, knives, forks, glasses and more ready for gracious service. A hi-lo screen between the salon and galley provides privacy on demand, storm covers protect all lower-deck portlights, extra sheet sets are provided for every bed and towels for every guest cabin, rain showers are fitted in the master and VIP, a removable cushion for the Beach Club tabletop and a freezer/refrigerator and teak flooring in the Beach Club add convenience, extra wireless chargers in the salon and the master raise everyday ease, and in the crew quarters a WOLF convection microwave elevates efficiency; inside and out, a higher-grade finish package elevates the tactile and visual experience.

## Miscellaneous

---

Safety and assurance are equally prioritized with two Viking Canister life rafts model 12847851 purchased and installed in the U.S., and a CAT warranty providing five years or 2,500 hours of coverage, underscoring the yacht's comprehensive preparedness for extended and secure enjoyment.

## Additional options

---

Thoughtful upgrades further refine capability and luxury across the yacht, with stronger aft cleats specified for towing and ventilation fans serving exterior appliances, granite surfaces elevating the boat deck and bar tops in the skylounge and Beach Club, Zipwake interceptors enhancing trim control for propulsion finesse, two storage cabinets added above the engines for organized spares and tools and an extra wall outlet in the lower companionway for improved everyday practicality. Interior appointments are comprehensive and include Jenn Air oven, Jenn Air galley cooktop, Jenn Air dishwasher, Jenn Air microwave hood and a Jenn Air crew microwave, Grohe Blue Professional systems in both the galley and the Beach Club, Whirlpool washer and dryer sets including an additional Whirlpool pair in the aft cabin, an extra refrigerator in the crew area and a red Miele vacuum. The AV ecosystem features original Crestron amps with Apple TV on each TV, full iPad remote control, and a Synology server loaded with over three thousand movies using Plex for seamless playback, a total of nine TVs were added accompanied by six additional exterior JL Audio speakers with all interior speakers running on Crestron and all exterior speakers from JL Audio to complete a richly appointed entertainment suite.

# CONTACTS

---

Shestakov Yacht Sales is a brokerage company specializing in the sale and service of yachts worldwide. The company offers services for buying and selling both new and used motor yachts, sailing vessels, and luxury superyachts. They also provide yacht registration, insurance, technical maintenance, crew selection, and charter organization services across the U.S., Canada, Latin America, the Caribbean, and the Bahamas.

The founder and lead broker of the company is Andrey Shestakov, a licensed and certified expert with extensive experience in marine engineering and shipbuilding.

The company has an extensive network of partnerships with major yacht manufacturers worldwide and provides services in multiple languages, including Russian, Ukrainian, Spanish, and English. The office is in Dania Beach, Florida, USA.

For more information and to view available yachts, you can visit the company's official website: <https://shestakovyachtsales.com>

## Contact details

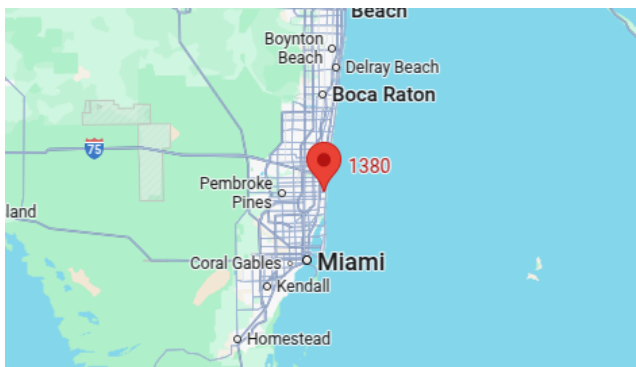
---

**Phone:** +1(954)274-4435

**Email:** [andrey@shestakovyachtsales.com](mailto:andrey@shestakovyachtsales.com)

## Address

---



1380 Weeping Willow Way, Hollywood,  
Florida 33019