



SHESTAKOV

Yacht Sales

BLUE EYES - PRINCESS



Builder: [PRINCESS](#)

LOA: 95' 0" (28.96 m)

Year Built: 2009

Beam: 23' 0" (7.01 m)

Model: Princess 95

Max Draft: 19' 8" (6 m)

Price: \$3,993,838.07 USD Subject to change.

Cruising Speed: 16 Knots (18.41 MPH)

[See full listing on our website](#)

Location: Antibes, France

Max Speed: 22 Knots (25.32 MPH)

If you would like to buy a yacht **BLUE EYES - PRINCESS** or would like help answering any questions concerning purchasing, selling, or chartering a yacht, please call **+1(954)274-4435** or click here on <https://shestakovyachtsales.com>

TABLE OF CONTENTS

OVERVIEW 3

SPECIFICATIONS 4

 Basic Information 4

 Dimensions 4

 Speed, Capacities and Weight 4

 Hull and Deck Information 5

 Engine Information 5

GALLERY 6

DETAILED DESCRIPTION 11

CONTACTS 17

OVERVIEW

Constructed and launched by Princess Yachts and delivered in 2009, the motor yacht BLUE EYES is an elegant 29.42m (95') superyacht offered for sale; comprehensively refitted in 2026, she accommodates up to eight guests across four spacious staterooms and provides crew quarters for five in three cabins.

SPECIFICATIONS

Basic Information

Model Year:
2009

Country:
France

Year Built:
2009

Dimensions

LOA:
95' 0" (28.96 m)

Max Draft:
19' 8" (6 m)

Beam:
23' 0" (7.01 m)

Speed, Capacities and Weight

Cruise Speed:
16 Knots (18.41 MPH)

Water Capacity:
475.51 Gallons

Max Speed:
22 Knots (25.32 MPH)

Fuel Capacity:
2905.89 Gallons

Gross Tonnage:
173 Pounds

Hull and Deck Information

Hull Material:

Fiberglass and Plastic Yachts

Hull Designer:

N/A

Deck Material:

GRP

Interior Designer:

N/A

Hull Configuration:

Planing

Engine Information

Engines:

2

Fuel Type:

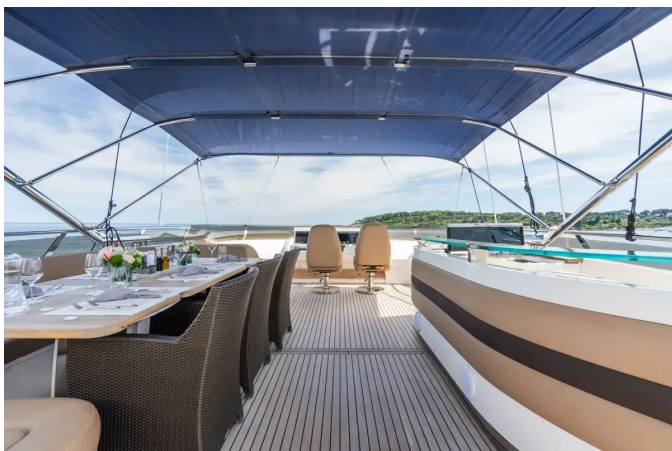
Diesel

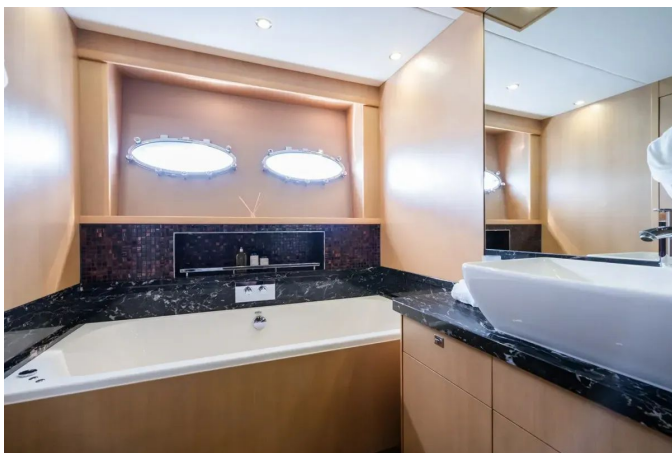
Manufacturer:

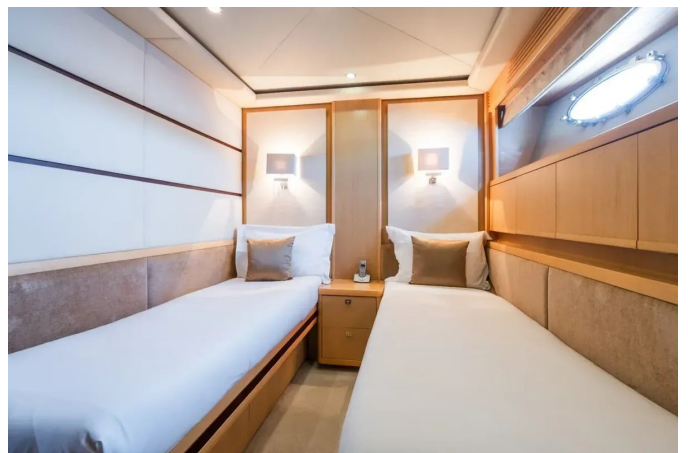
CAT

GALLERY











DETAILED DESCRIPTION

Overview

M/Y BLUE EYES is a Princess 95 that combines proven seakeeping and performance with meticulous attention to guest comfort. Delivered in 2009 and comprehensively refitted in 2026, she has undergone significant technical enhancements, including a full top-end overhaul of both engines, delivering dependable cruising capability and smooth operation. The yacht's interior sleeps up to eight guests across four ensuite staterooms, highlighted by a generous full-beam master, while crew arrangements accommodate five onboard. Her layout is notable for the uncommon five-crew configuration arranged in three cabins alongside a large, well-appointed galley.

Entertaining spaces are generous and thoughtfully arranged: the expansive flybridge hosts a formal dining area, a dedicated bar with barbecue and expansive lounging zones, creating an ideal environment for relaxed socialising or sophisticated alfresco dining. A sizeable sundeck offers multiple comfortable seating areas and a private retreat, and the Transformer swim platform provides elegant, effortless access to the sea for watersports and tender operations. Ample storage has been integrated for toys and gear, ensuring days at sea are carefree and well-equipped. VAT paid and commercially compliant under the Malta flag, BLUE EYES represents an attractive proposition for private ownership or continued charter service, with her full-beam master, large sundeck, bar and lounge, Transformer-equipped swim platform, and rare five-crew layout all reinforcing her versatility and appeal.

Machinery

Propulsion is delivered by two CAT C32 engines, each rated at 1,800 hp, turning twin propellers through ZF-3050A gearboxes, while electrical generation aboard is supplied by two Onan 40 kW generators. Maneuvering and low-speed control benefit from an American Bow Thruster arrangement, featuring a 35 hp bow thruster and a 15 hp stern thruster, and the vessel's motion is refined by TRAC digital stabilisers with at-anchor capability together with a Bennett trim system for composed, assured passages. A fixed stern control station provides exacting handling in confined spaces, freshwater is produced by a Technicomar watermaker at 180 L/hour, and daily operations are made effortless by a hydraulic anchor winch and a hydraulically operated stair/tender platform.

Accommodation

The Owner's stateroom is luxuriously appointed with a double bed and its own private en suite bath with shower, while two VIP guest staterooms each provide a double bed and dedicated en suite bathroom, complemented by a twin stateroom that also enjoys its own en suite. A thoughtfully positioned day head serves the main deck, and three crew cabins berth five crew members, ensuring attentive, discreet service on every voyage.

Galley, crew area, flybridge and laundry equipment

The yacht's galley is appointed for haute cuisine, centered on a Miele cooking top that offers four hobs and paired with an Elica extractor hood, while precision cooking is supported by a Miele oven, a Miele microwave and a Miele coffee machine. Operational elegance is maintained with a Broan trash compactor, a Miele dishwasher and a Franke sink, and cold storage is provided

by a Sub-Zero 700TR refrigerator together with a Sub-Zero 700BF freezer. Dedicated crew facilities include a Soge Lux refrigerator, a Liebherr freezer and an additional Franke sink to ensure service runs smoothly at any hour. Laundry duties are effortlessly managed by a Miele washing machine and a Miele dryer. On the flybridge, alfresco entertaining is enhanced by a Brema ice maker, a convenient sink, a Plastimo electric barbecue and a Dometic electric glacette, keeping drinks chilled and grill-ready fare within easy reach.

Communications, navigation & entertainment equipment

The yacht's navigation and command suite is built around an advanced Furuno installation that brings together a radar, a NavPilot autopilot, five chart plotters, two GP-32 GPS receivers, an FA-150 AIS and an echo sounder, all orchestrated alongside a pair of Furuno HS4721 VHF DSC radios to ensure coherent, reliable control. Complementing this core are two Plastimo magnetic compasses for redundant heading reference, while onboard safety and maritime awareness benefit from two GMDSS handheld VHF model IC-GM1600E, a Furuno NX-700 Navtex unit and an ACR searchlight. For uninterrupted, high-speed connectivity at sea a 2024 Starlink Maritime installation has been fitted. The entertainment suite is equally refined, with a 2024 Samsung 55-inch smart TV, an LG 42-inch smart TV, two LG 32-inch smart TVs and a Samsung 23-inch TV providing extensive visual options, while an immersive audio experience is delivered by eighteen Linn speakers and one Linn subwoofer, augmented by four 2024 exterior Fusion speakers, two Boss Marine speakers, two Hydra speakers and six Sonos boxes.

Deck equipment

Deck operations are conducted with assured precision via two Miur stern

capstans and a pair of Muir anchor windlasses, paired with two 80kg stainless steel AC14 anchors to deliver dependable holding power. The ground tackle is specified with exacting detail: a 130m, 14mm anchor chain to starboard and a 110m, 14mm anchor chain to port, providing balanced and reliable anchoring performance. Boarding, tender handling and water access are facilitated by an Opacmare passerelle, an Opacmare 1200kg crane and an Opacmare swim ladder, ensuring graceful, effortless transfers between yacht and sea.

Safety & security equipment

Safety is woven into the yacht's design: four CCTV cameras feed a single CCTV monitor while a UPC fire detection system provides constant oversight. For offshore contingency the vessel is equipped with one Ocean Signal EPIRB and one SART S4 Rescue unit, complemented by two air horns and a grab bag with flares. Personal protection is comprehensive, with thirteen CO2 inflatable life jackets and thirteen smoke hood masks supplied for guests and crew. In the event of abandonment two SOLAS B life rafts rated for eight PAX each are ready to be deployed, supported by four life rings and two throw lines. Fire suppression is equally thorough, comprising one FM200 extinguisher, one fire pump and one emergency fire pump, together with seven 2 kg CO2 extinguishers, three 2 kg foam extinguishers, three 2 kg powder extinguishers, two 6 kg powder extinguishers and six 1 kg powder extinguishers.

Tender and water toys

Adventure begins the moment the tender is cast off: a Novurania DL measuring 4.60m and powered by a 90hp engine, ideal for quick shore runs and smooth guest transfers. The yacht's water-activity collection delivers equal appeal, featuring two Kawasaki STX160LX jetskis from 2024, a Seabob, an eFoil FLite, a wakeboard and two paddleboards to suit a range of skill levels. For

towable fun there is both a one-person Jobe inflatable and a three-person Jobe inflatable, while a full set of snorkeling equipment invites intimate encounters with the underwater world. Leisure and easy handling are further supported by two floating platforms—one specifically configured to berth two jet skis—alongside an anti-jellyfish inflatable pool and a single slide for carefree splashes. Anglers are well provided for with two deep-sea rod-and-reel outfits, two light rod-and-reel outfits and one tackle bag, offering the right rig for whatever fish the day may bring.

Recent upgrades and refits

A meticulous programme of enhancements has been carried out to elevate both onboard refinement and operational reliability. All interior deckheads have been renewed, and the salon has received a tasteful refresh that includes the removal of the original mirror in favour of a Meural digital art wall, new dining chairs, an upgraded television, a pair of crystal lamps and a new marble coffee table. Practical refinements extend throughout the accommodation with additional plug and USB sockets fitted in every cabin and in the salon, while alfresco entertainment has been improved by replacing and upgrading all external speakers. On the flybridge the yacht has been fitted with removable Jet Ski rails and chocks, and a new tender plus dedicated chocks have been added for greater versatility. Critical technical works include a complete replacement of the crane hydraulic hoses, renewal of all grey water hoses and replacement of the bearings and shafts on the stabiliser fins. The hull was professionally sandblasted and finished with fresh racing antifoul to optimise fuel efficiency, and global connectivity is assured through installation of Starlink Maritime. Engine-room maintenance has been comprehensively addressed with a 6,000 hour main engine service, turbo gasket replacement on all four turbos and a 1,000 hour service of the generator set, ensuring robust and efficient cruising performance.

2025/2026 upgrades and refits

Throughout 2025 and 2026 the yacht underwent an extensive refit programme that raised standards of both performance and onboard comfort. Both engines benefited from full top-end work, while the air-conditioning system was replaced with a new unit complete with upgraded fan coils. The hydraulic unit was comprehensively overhauled and the generators received a major service to ensure dependable power delivery. Navigation and power resilience were bolstered by the addition of a new GPS and two UPS units, and onboard autonomy was improved through the installation of a new watermaker. Leisure and entertainment on deck were enhanced with two new amplifier units and new flybridge speakers, significant maintenance was performed on the stabilizer, and practical upgrades included a new galley extractor and the fitting of an AB track system.

CONTACTS

Shestakov Yacht Sales is a brokerage company specializing in the sale and service of yachts worldwide. The company offers services for buying and selling both new and used motor yachts, sailing vessels, and luxury superyachts. They also provide yacht registration, insurance, technical maintenance, crew selection, and charter organization services across the U.S., Canada, Latin America, the Caribbean, and the Bahamas.

The founder and lead broker of the company is Andrey Shestakov, a licensed and certified expert with extensive experience in marine engineering and shipbuilding.

The company has an extensive network of partnerships with major yacht manufacturers worldwide and provides services in multiple languages, including Russian, Ukrainian, Spanish, and English. The office is in Dania Beach, Florida, USA.

For more information and to view available yachts, you can visit the company's official website: <https://shestakovyachtsales.com>

Contact details

Phone: +1(954)274-4435

Email: andrey@shestakovyachtsales.com

Address



1380 Weeping Willow Way, Hollywood,
Florida 33019