

SANLORENZO SL96 ASYMMETRIC #894 (NEW) - SANLORENZO



Builder: [Sanlorenzo](#)

LOA: 95' 0" (29.06 m)

Year Built: 2026

Beam: 22' 0" (6.76 m)

Model: SL96 Asymmetric

Max Draft: 6' 6" (1.98 m)

Price: - Subject to change.

Cruising Speed: 24 Knots (27.62 MPH)

[See full listing on our website](#)

Location: Athens, Greece

Max Speed: 28 Knots (32.22 MPH)

TABLE OF CONTENTS

OVERVIEW	3
SPECIFICATIONS	4
Basic Information	4
Dimensions	4
Speed, Capacities and Weight	4
Accommodations	5
Hull and Deck Information	5
Engine Information	5
GALLERY	6
CONTACTS	9

OVERVIEW

With the SL96 Asymmetric, Sanlorenzo reinvents the conventional luxury motor yacht blueprint, recalibrating onboard harmony to release areas once devoted to passage and, more importantly, to craft fresh modes of living at sea. New perspectives and sweeping sightlines elevate every moment underway or at anchor, deepening that innate visual, tactile, and emotional affinity between people and the water.

A dialogue of design, destinations, and purpose—a habitat for life.

By preserving only the starboard side deck and relocating the port walkway to the superstructure roof, the now-iconic asymmetrical concept—first unveiled on the SL102A—frees approximately 10 square meters for the interior. Versus a traditional layout, this approach delivers greater volume while enhancing natural light and adaptability throughout.

This brand-new SL range flybridge motor yacht is in build for delivery in Summer 2026, embodying Sanlorenzo's patented asymmetric architecture to create a larger, brighter main-deck salon. Accommodation comprises five ensuite cabins for up to 11 guests, highlighted by a main-deck owner's suite with direct access to a private bow terrace. Sea-connected outdoor living flows effortlessly across the expansive flybridge, the foredeck lounge, and the aft cockpit, concluding at the transom with a hydraulic swimming platform that transforms into your waterside beach—a hallmark of contemporary superyacht lifestyle.

SPECIFICATIONS

Basic Information

Model Year:
2026

Country:
Greece

Year Built:
2026

Dimensions

LOA:
95' 0" (29.06 m)

Max Draft:
6' 6" (1.98 m)

Beam:
22' 0" (6.76 m)

Speed, Capacities and Weight

Cruise Speed:
24 Knots (27.62 MPH)

Water Capacity:
396.26 Gallons

Max Speed:
28 Knots (32.22 MPH)

Fuel Capacity:
1875.62 Gallons

Accommodations

Sleeps:

8

Crew Cabin:

2

Total Heads:

6

Crew Berths:

4

Hull and Deck Information

Hull Material:

Fiberglass and Plastic Yachts

Hull Designer:

N/A

Deck Material:

GRP

Interior Designer:

Sanlorenzo

Hull Configuration:

N/A

Engine Information

Engines:

2

Engine Type:

Inboard

Manufacturer:

MTU

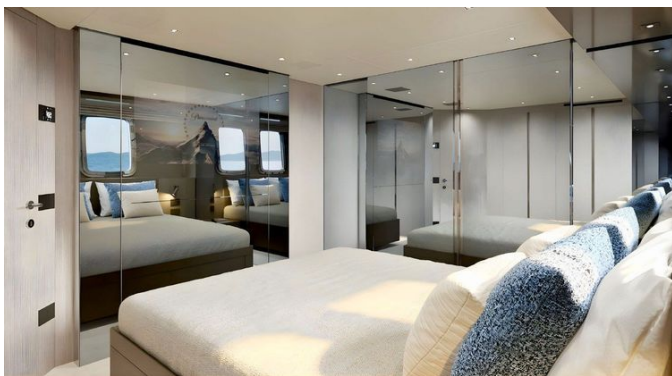
Fuel Type:

Diesel

GALLERY







CONTACTS

Shestakov Yacht Sales is a brokerage company specializing in the sale and service of yachts worldwide. The company offers services for buying and selling both new and used motor yachts, sailing vessels, and luxury superyachts. They also provide yacht registration, insurance, technical maintenance, crew selection, and charter organization services across the U.S., Canada, Latin America, the Caribbean, and the Bahamas.

The founder and lead broker of the company is Andrey Shestakov, a licensed and certified expert with extensive experience in marine engineering and shipbuilding.

The company has an extensive network of partnerships with major yacht manufacturers worldwide and provides services in multiple languages, including Russian, Ukrainian, Spanish, and English. The office is in Dania Beach, Florida, USA.

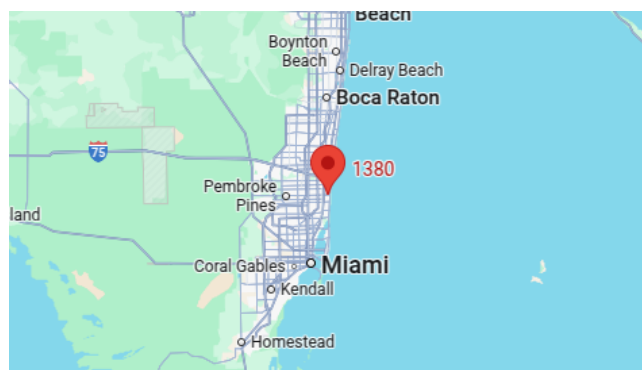
For more information and to view available yachts, you can visit the company's official website: <https://shestakovyachtsales.com>

Contact details

Phone: +1(954)274-4435

Email: andrey@shestakovyachtsales.com

Address



1380 Weeping Willow Way, Hollywood,
Florida 33019