

JICJ - SANLORENZO



Builder: [Sanlorenzo](#)

LOA: 95' 0" (29.06 m)

Year Built: 2023

Beam: 22' 0" (6.76 m)

Model: SL96A

Min Draft: 6' 6" (1.98 m)

Price: \$9,051,156.66 USD Subject to change.

Max Draft: 6' 6" (1.98 m)

[See full listing on our website](#)

Location: Monfalcone, Italy

Cruising Speed: 24 Knots (27.62 MPH)

Max Speed: 28 Knots (32.22 MPH)

TABLE OF CONTENTS

OVERVIEW	3
SPECIFICATIONS	5
Basic Information	5
Dimensions	5
Speed, Capacities and Weight	5
Hull and Deck Information	6
Engine Information	6
GALLERY	7
DETAILED DESCRIPTION	16
CONTACTS	19

OVERVIEW

Delivered in July 2023, JICJ represents a rare chance to secure a virtually new Sanlorenzo from the brand's groundbreaking Asymmetric line, a luxury motor yacht that blends modern Italian styling with high-spec craftsmanship and serious charter yacht appeal. At a compelling price point, she suits an owner seeking one of the newest yachts in her class without the delays of a new-build schedule, offering immediate access to a cutting-edge superyacht experience with a contemporary, elegant aesthetic and top-tier outfitting throughout.

Her family-friendly layout features five cabins plus an additional Pullman, welcoming up to 11 guests in refined comfort, while the Owner's suite benefits from private port-side access for enhanced discretion and seamless movement on board. Exceptional internal volume belies her length, making JICJ feel like a larger flybridge yacht; the pioneering asymmetric architecture delivers approximately 15% more space on the main deck, amplifying livability and flow. Full-height, floor-to-ceiling glazing floods the interior with natural light, and a sliding port-side wall in the main salon opens the horizon, creating panoramic sea views that blur the boundary between indoors and out for an effortlessly luxurious ambience.

Exterior styling by Zuccon International Project is sleek, modern, and impeccably balanced, with expansive outdoor areas forward and aft designed for both relaxation and entertaining, equally suited to sun-drenched lounging or shaded repose under protective overhangs. A hard top with an electric blade-opening roof elevates the flybridge experience, offering adaptable al fresco living perfectly aligned with premium cruising and hospitality.

Technically advanced and adventure-ready, JICJ is specified with two upgraded 45 kW Kohler generators, the Diamond Raymarine navigation package, a Starling Maritime system, and comprehensive comfort solutions including zero-speed stabilizers for serene anchorage and assured poise at sea.

Underway, she delivers genuine performance thrills with a top speed of up to 28 knots, blending superyacht refinement with the agility of a high-performance planing motor yacht. Altogether, this highly equipped Sanlorenzo stands out as a unique opportunity: a July 2023 delivery from the revolutionary Asymmetric series, featuring five cabins for 11 guests, full-height windows with a sliding port-side salon wall for the best views, dual upgraded generators, advanced navigation, and stabilizers both at rest and in motion—an elegant, turnkey flybridge superyacht with outstanding charter credentials.

SPECIFICATIONS

Basic Information

Model Year:
2023

Country:
Italy

Year Built:
2023

Dimensions

LOA:
95' 0" (29.06 m)

Beam:
22' 0" (6.76 m)

Min Draft:
6' 6" (1.98 m)

Max Draft:
6' 6" (1.98 m)

Speed, Capacities and Weight

Cruise Speed:
24 Knots (27.62 MPH)

Water Capacity:
396.26 Gallons

Max Speed:
28 Knots (32.22 MPH)

Fuel Capacity:
1875.62 Gallons

Gross Tonnage:
100 Pounds

Hull and Deck Information

Hull Material:

Fiberglass and Plastic Yachts

Hull Designer:

N/A

Deck Material:

GRP

Interior Designer:

N/A

Hull Configuration:

N/A

Engine Information

Engines:

2

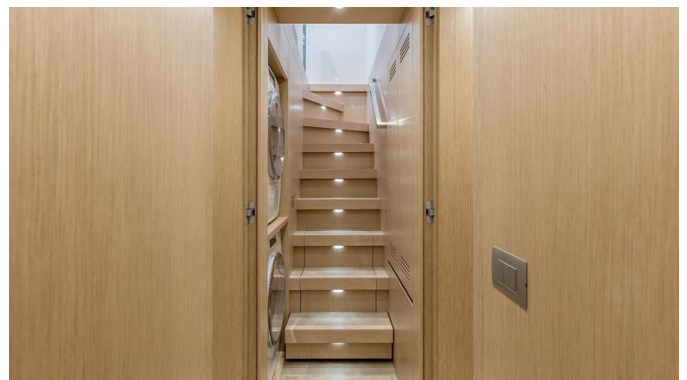
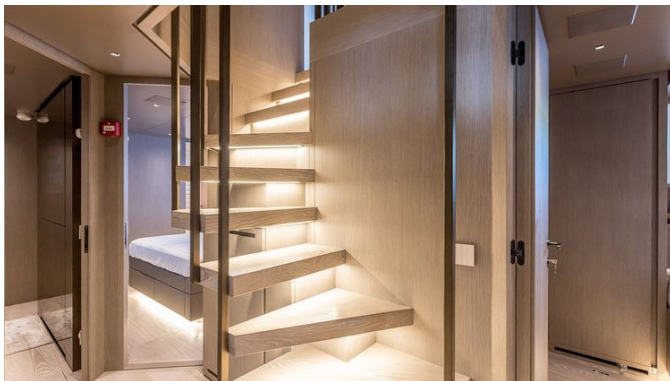
Fuel Type:

Diesel

Manufacturer:

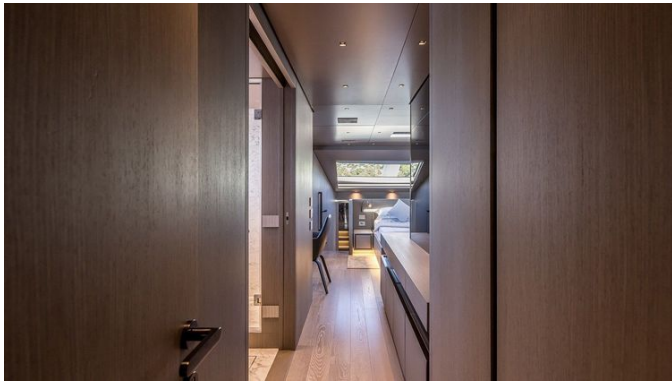
MAN

GALLERY

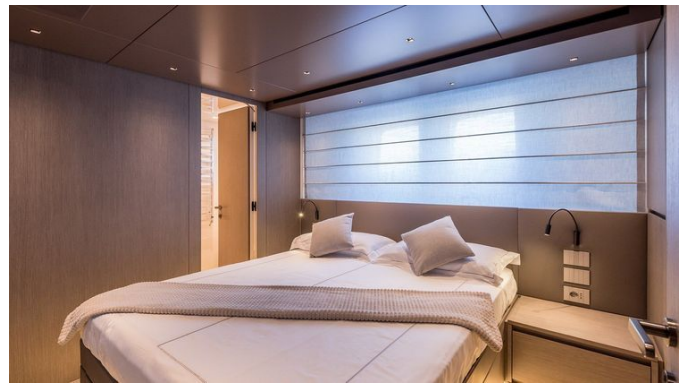






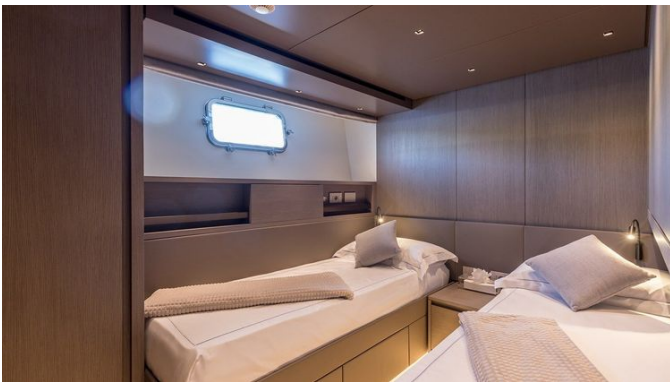












DETAILED DESCRIPTION

Specifications

Designed to host in perfect comfort, the yacht features a five-cabin layout for a total of eleven guests, including a Pullman bed in the twin cabin, complemented by two crew cabins for four crew members. The owner's bathroom is appointed with a steam bath, towel heaters, a rain shower, shower walls in Emperador Light polished finishing, and marble sinks in all bathrooms.

Performance and reliability are delivered by MAN V16 engines with ZF V-Drive inverters, providing power at two x 2.216 HP. Engine hours at November 2025 are recorded as 600 h port and 600 h starboard. In Class "S" NiBrAl alloy propellers are specified to optimise comfort and performance.

Electrical and auxiliary systems are equally robust, with two upgraded Kohler generators of 45 kW, showing 1900 h at November 2025, and air-conditioning capacity of 180,000 BTU/h. A compressed air system offers four connections serving the bow area, garage, engine room, and flybridge. Battery installations include service batteries at 600 Ah/24 VDC, emergency batteries at 200 Ah/24 VDC, main engine electronics batteries at 240 Ah@24 VDC, and generator batteries at 140 Ah@12 V, supported by an additional 12 V 25 A charger dedicated to generator batteries. Shore power is managed via a Cablemaster Glendinning CM8 for 100/125 A shore sockets, while an inverter Mastervolt 24 V 5000 W supplies 220 V sockets.

Endurance is assured with generous tankage: fuel capacity of 7100 l plus a daily fuel tank capacity of 3.250 l, fresh water capacity of 1500 l, grey water capacity of 760 l, and black water capacity of 560 l. An Idromar watermaker produces 250 l/h, and an active carbon purification filter polishes the fresh water system.

Handling and stability are refined with a hydraulic stern thruster, hydraulic steering systems, and a fins stabilizer system providing zero-speed performance both underway and at anchor, complemented by zero-speed and underway stabilizers for exceptional poise in all conditions.

Safety and security are prioritised through an advanced electronic fire detection system, an open portholes alarm, and a Panasonic IP CCTV system with DVR featuring one fixed camera in the cockpit and one pan-and-tilt camera in the engine room, plus dedicated cameras and lights for the anchors.

Seamless connectivity and command are guaranteed with a Starlink Maritime System, one VHF, and two VHF antennas. Navigation is empowered by the Raymarine Diamond package, including two 12" multi function colour displays, one speed/depth/wind/temperature indicator, one rudder angle indicator, one autopilot, one GPS antenna, one 48" open-array radar antenna rated to seventy-two nautical miles, and one wind transducer.

On deck, a hardtop with an electrically actuated blade-opening roof crowns the spaces, while an external inox shower column, sun awning for the stern area of the fly, Norwegian fly canvas, and a port-side door for access to the superstructure walkway elevate practicality. Entertaining is enhanced by a custom bar cabinet on the flybridge, a cockpit summer cover, and a sun awning for the bow area. A full-beam area awning supported by four stainless steel poles extends shade, LED underwater lights set the ambience, and a port-side hull sliding wall with a hilo electric system adds versatility. Additional amenities include a removable high shower, a removable cover for the garage when the door is open, electrically openable sunbeds for the anchor windlasses with cushions, a Paola Lenti sofa for the flybridge, and electric blackout shades throughout.

A comprehensive audio/visual suite comprises the Diamond Audio/Video Package, a TV in the saloon, Samsung LED 24" TVs for the cabins, mirrors that cleverly conceal the TVs, and Apple TV, with office-friendly capability provided

by a fold out 32" monitor/TV for the dining table in the salon.

The galley and domestic specification is professional-grade, featuring a Miele washing machine, Miele and Gaggenau professional dryer machines, a Gaggenau/Miele 90 cm ceramic glass cooking top, and a Gaggenau/Miele 90 cm oven. Day-to-day convenience comes from a rapid dishwasher, fridge, two icemakers, an additional steam oven, an additional microwave, and an additional freezer in the crew area. Comfort is amplified by towel heaters in the cabins, and connoisseurs will appreciate the Miele/Indel Webasto wine cooler for 23 bottles and the teppan yaki station.

Further enhancements include underwater lights and the reassurance of zero-speed and underway stabilizers. Completing the picture, a tender Williams Sportjet 435 (2023) ensures swift, stylish transfers and waterside adventures.

CONTACTS

Shestakov Yacht Sales is a brokerage company specializing in the sale and service of yachts worldwide. The company offers services for buying and selling both new and used motor yachts, sailing vessels, and luxury superyachts. They also provide yacht registration, insurance, technical maintenance, crew selection, and charter organization services across the U.S., Canada, Latin America, the Caribbean, and the Bahamas.

The founder and lead broker of the company is Andrey Shestakov, a licensed and certified expert with extensive experience in marine engineering and shipbuilding.

The company has an extensive network of partnerships with major yacht manufacturers worldwide and provides services in multiple languages, including Russian, Ukrainian, Spanish, and English. The office is in Dania Beach, Florida, USA.

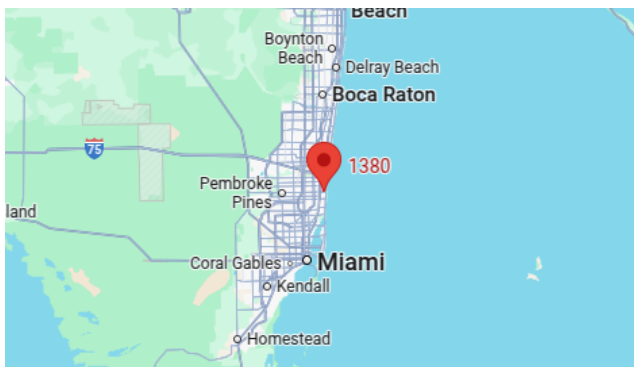
For more information and to view available yachts, you can visit the company's official website: <https://shestakovyachtsales.com>

Contact details

Phone: +1(954)274-4435

Email: andrey@shestakovyachtsales.com

Address



1380 Weeping Willow Way, Hollywood,
Florida 33019