

HANG LOOSE - PRINCESS



Builder: [PRINCESS](#)

Beam: 22' 0" (6.78 m)

Year Built: 2021

Max Draft: 21' 7" (6.58 m)

Model: X95

Cruising Speed: 18 Knots (20.71 MPH)

Price: \$9,950,000 USD Subject to change.

[See full listing on our website](#)

Location: Fajardo, United States

LOA: 95' 0" (29.11 m)

TABLE OF CONTENTS

OVERVIEW	3
SPECIFICATIONS	4
Basic Information	4
Dimensions	4
Speed, Capacities and Weight	4
Accommodations	5
Hull and Deck Information	5
Engine Information	5
GALLERY	6
DETAILED DESCRIPTION	28
CONTACTS	31

OVERVIEW

On this luxury motor yacht, twin MAN V12 2000 powerplants, each rated at 2,000 hp, show 1,075 hrs port and 1,070 hrs stbd, underscoring poised performance and reliability.

SPECIFICATIONS

Basic Information

Model Year:
2021

Country:
United States

Year Built:
2021

Dimensions

LOA:
95' 0" (29.11 m)

Max Draft:
21' 7" (6.58 m)

Beam:
22' 0" (6.78 m)

Speed, Capacities and Weight

Cruise Speed:
18 Knots (20.71 MPH)

Water Capacity:
477 Gallons

Gross Tonnage:
104 Pounds

Fuel Capacity:
3540 Gallons

Accommodations

Sleeps:

7

Crew Berths:

3

Total Heads:

7

Hull and Deck Information

Hull Material:

Fiberglass and Plastic Yachts

Hull Designer:

N/A

Deck Material:

Fiberglass

Interior Designer:

N/A

Hull Configuration:

N/A

Engine Information

Engines:

2

Engine Type:

Inboard

Manufacturer:

MAN

Fuel Type:

Diesel

GALLERY























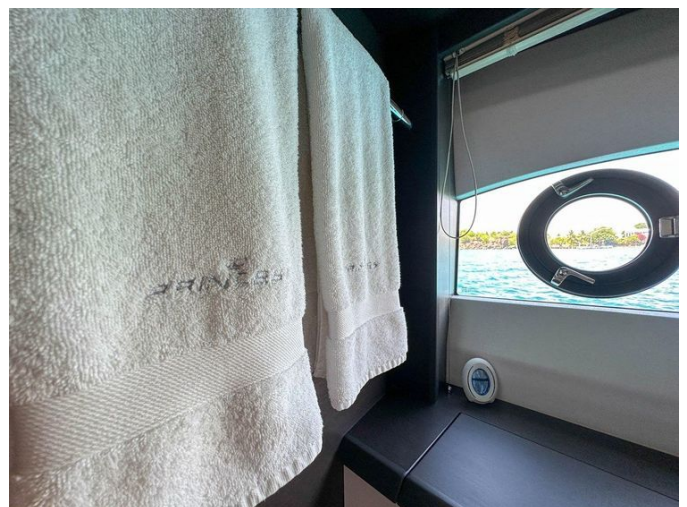
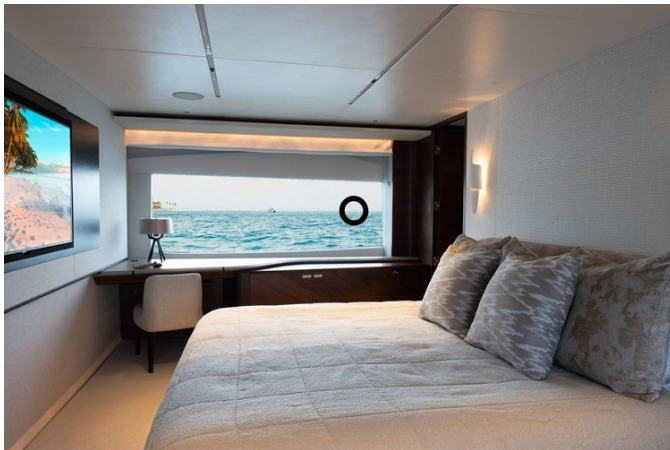




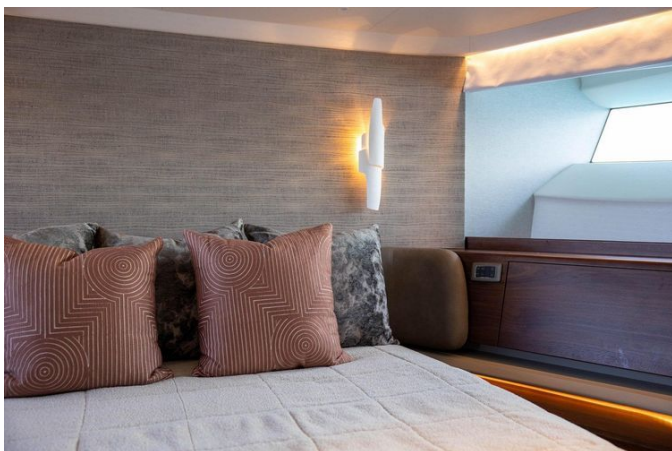






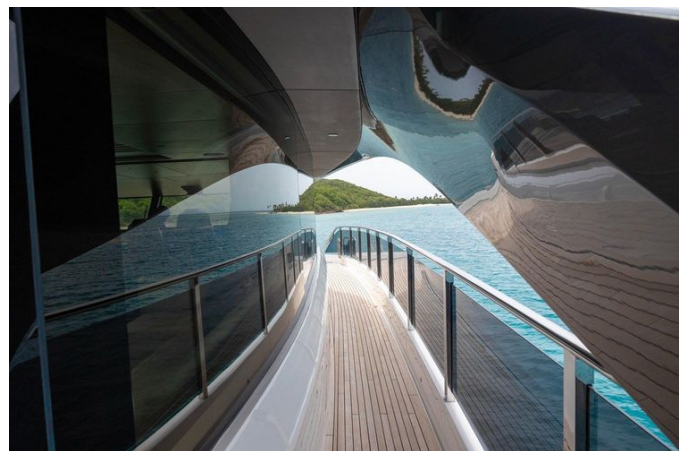












DETAILED DESCRIPTION

2021 Princess X95 Hang Loose

Power comes from MAN V12-2000 powerplants rated at 2,000, supported by an upgrade to two Onan 55 kW/60 Hz generators in place of the standard fit. Precision low-speed maneuvering is effortless with an Aventics dual-station joystick operating the engines and bow thruster, while a comprehensive hydraulic system combines the bow thruster and windlass. A hydraulic stern thruster delivers variable speed with 420 KgF of thrust, and the Sleipner hydraulic system—featuring separate engine-driven pumps on each engine with cross-connections—ensures any system can be supplied from either engine. It incorporates the SPS93/VF1950 vector fin stabilizer system, with fins driven by engine-powered hydraulic pumps underway and by a generator-powered electric motor at zero speed.

The upgraded Garmin navigation suite replaces the standard package and centers on three Garmin GPSMAP 8617 multifunction displays, a Garmin GMR Fantom 126 radar with a 120 W six-foot open array, a Garmin autopilot with GHC 20 control unit in place of the standard Raymarine i70R, and a Garmin GMI 20 marine instrument in place of the standard Raymarine i70.

Communications are handled by a Garmin VHF315 marine radio. The Garmin MFDs are linked to the engines to display full engine instrumentation. A Garmin AIS 800 black box transceiver, interfaced with the existing VHF aerial, enables the Automatic Identification System to both transmit and receive ship identification, position, course, and speed information. Chase tubes are installed for the later fitting of SAT TV. For optimal command visibility when docking, a starboard-side wing station set into the flybridge coaming provides engine controls, thruster controls, and engine emergency stops, and the wheelhouse benefits from an additional navigation helm seat.

Nighttime presence is striking with underwater transom lights comprising four Lumishore THX 803 full-color units, and underwater lighting to the aft hull sides via eight Lumishore TIX 803 full-color units, all interfaced with the radar/chartplotter MFDs. The exterior lighting upgrade adds sixteen fiber optic overhead lights to the cockpit, eight overhead main deck down-lighters to the side deck areas, thirteen main deck low-level lights, and sixteen lower-level lights to the bow and foredeck. An electric aft awning in Anthracite Grey fabric shades the upper deck at the touch of a button.

Refined finishing includes an upper deck canopy and hardtop painted in Graphite Grey with support legs finished in Platinum metallic, while exterior furniture, where applicable, is painted in Oyster Grey metallic. The hull is white with a dark grey waterline, black antifouling, and white fendering on the hull and bathing platform with a stainless steel insert. Teak decking graces all exterior deck areas, and the flybridge is standard in teak. Practicality is enhanced by side entry gates to the aft port and starboard side decks, complementing the standard passerelle, while the foredeck features a spa bath—with increased clarifier and water pump capacity—in place of the standard sunpad.

Interior craftsmanship showcases walnut wood in a satin finish. The optional five-stateroom layout features a forward main deck master, with port and starboard cabins offering double-berth conversion via a powered sliding mechanism on the inboard berth. The skylounge is thoughtfully appointed with a day head including a basin, toilet, and storage locker. The salon configuration is elevated by an optional L-shaped sofa to port with two armchairs at the aft end and a sofa to starboard. To port, an optional bar replaces the sideboard and incorporates a refrigerator, ice-maker, storage, and sink, paired with two stools. An interior lighting upgrade infuses the atmosphere with sixteen additional fiber optic lights throughout the aft and forward salon areas.

Entertaining flows from cockpit to flybridge with a cockpit bar unit housing a

drawer refrigerator, ice-maker, sink, and storage cupboard. On the flybridge, a port-side bar unit includes one Kenyon electric griddle-type barbecue, one Kenyon induction hob, a drawer refrigerator, sink, and waste bin, while the starboard outboard sideboard is fitted with a top-loading cool box and ice-maker. A beach club replaces the transom garage, unlocking a revised crew arrangement comprising a captain's double cabin with en-suite, a second twin cabin, and a second crew bathroom.

CONTACTS

Shestakov Yacht Sales is a brokerage company specializing in the sale and service of yachts worldwide. The company offers services for buying and selling both new and used motor yachts, sailing vessels, and luxury superyachts. They also provide yacht registration, insurance, technical maintenance, crew selection, and charter organization services across the U.S., Canada, Latin America, the Caribbean, and the Bahamas.

The founder and lead broker of the company is Andrey Shestakov, a licensed and certified expert with extensive experience in marine engineering and shipbuilding.

The company has an extensive network of partnerships with major yacht manufacturers worldwide and provides services in multiple languages, including Russian, Ukrainian, Spanish, and English. The office is in Dania Beach, Florida, USA.

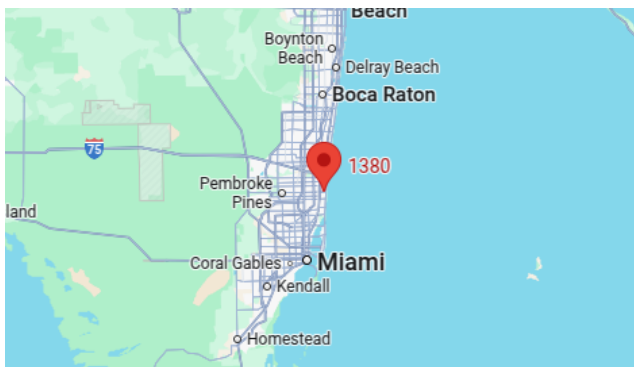
For more information and to view available yachts, you can visit the company's official website: <https://shestakovyachtsales.com>

Contact details

Phone: +1(954)274-4435

Email: andrey@shestakovyachtsales.com

Address



1380 Weeping Willow Way, Hollywood,
Florida 33019