

GRACE - ASTONDOA



Builder: [Astondoa](#)

LOA: 95' 0" (29 m)

Year Built: 2009

Beam: 22' 0" (6.82 m)

Model: 96 GLX

Min Draft: 7' 3" (2.20 m)

Price: \$2,200,000 USD Subject to change.

Max Draft: 7' 3" (2.20 m)

[See full listing on our website](#)

Location: Fort Lauderdale, United States

Cruising Speed: 20 Knots (23.02 MPH)

Max Speed: 26 Knots (29.92 MPH)

TABLE OF CONTENTS

OVERVIEW	3
SPECIFICATIONS	5
Basic Information	5
Dimensions	5
Speed, Capacities and Weight	5
Accommodations	6
Hull and Deck Information	6
Engine Information	6
GALLERY	7
DETAILED DESCRIPTION	16
CONTACTS	20

OVERVIEW

The 2009 Astondoa 96 GLX is an exceptional flybridge motor yacht, a bespoke creation from the renowned Spanish yard Astondoa, commissioned for the shipyard owner himself, embodying the essence of luxury, performance, and contemporary design. She presents a harmonious fusion of expansive interior volumes, cutting-edge amenities, and exquisitely executed craftsmanship worthy of a modern superyacht. Conceived for both comfort and practicality, this luxury motor yacht delivers a fluid yachting experience for owners and guests alike, whether accelerating to brisk cruising speeds or unwinding serenely at anchor. Accommodations welcome up to 10 guests across four en-suite staterooms, each curated to feel refined, restful, and inviting. The full-beam master suite, reached via a private staircase, serves as the principal stateroom, while the VIP cabin offers impressive space and indulgence. A beautifully finished double cabin and a twin with an additional Pullman berth provide adaptable sleeping arrangements. Dedicated crew quarters with independent access house up to four, ensuring discreet service and complete privacy for guests. On deck, the expansive flybridge is a standout, offering broad sunning areas, a convivial dining spot, multiple lounging zones, and a full wet bar—an ideal stage for relaxation and entertaining underway or at anchor. The main deck features an airy, welcoming salon with dining for up to 10, complemented by generous lounge seating and a convenient day head. Aft, the deck grants further dining and comfortable seating, while forward the bow is appointed with sunbeds and an awning for shade, creating another blissful retreat for panoramic views. The interior of M/Y Grace radiates sophistication, with contemporary finishes that maximize volume and natural light. Pale oak and tailored leather accents evoke a warm yet modern mood, while the open-plan salon balances style with effortless comfort. A fully equipped galley underscores practical cruising, with modern appliances and abundant storage to support extended voyages on board.

SPECIFICATIONS

Basic Information

Model Year:
2009

Country:
United States

Year Built:
2009

Dimensions

LOA:
95' 0" (29 m)

Beam:
22' 0" (6.82 m)

Min Draft:
7' 3" (2.20 m)

Max Draft:
7' 3" (2.20 m)

Speed, Capacities and Weight

Cruise Speed:
20 Knots (23.02 MPH)

Water Capacity:
396.26 Gallons

Max Speed:
26 Knots (29.92 MPH)

Fuel Capacity:
2641.72 Gallons

Gross Tonnage:
168 Pounds

Accommodations

Sleeps:

7

Crew Cabin:

2

Total Heads:

5

Hull and Deck Information

Hull Material:

Fiberglass and Plastic Yachts

Hull Designer:

Astondoa

Deck Material:

GRP

Interior Designer:

N/A

Hull Configuration:

Deep Vee

Engine Information

Engines:

2

Engine Type:

Inboard

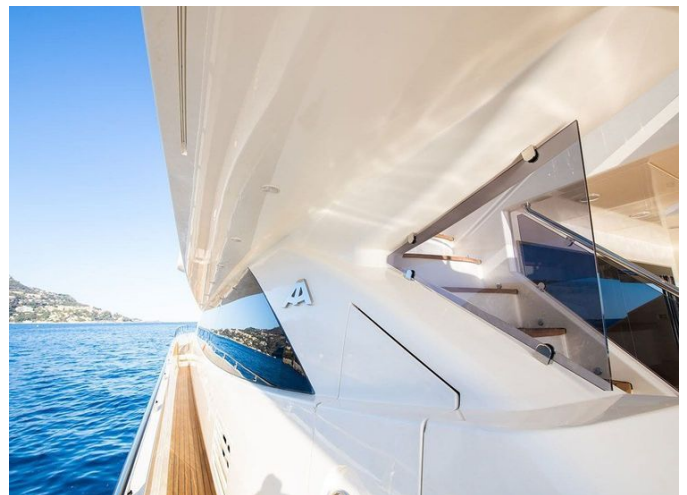
Manufacturer:

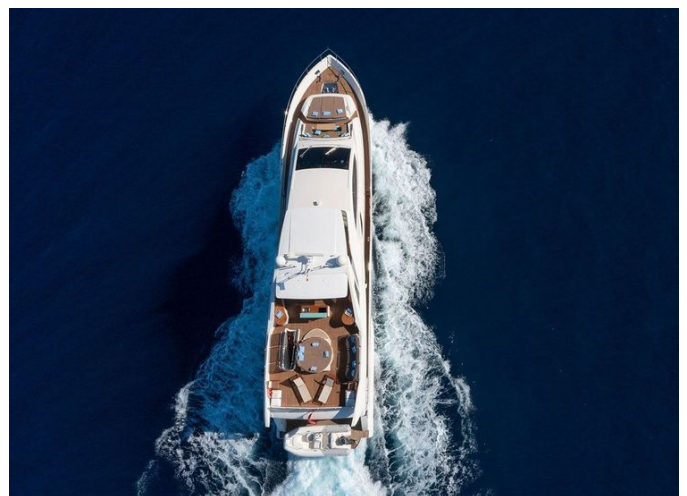
MTU

Fuel Type:

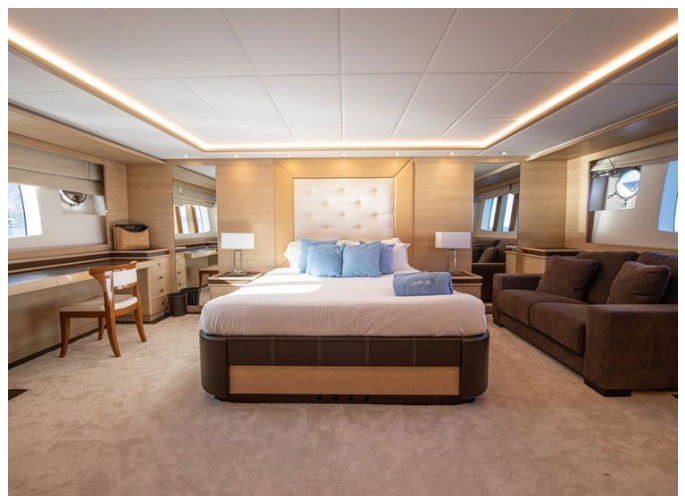
Diesel

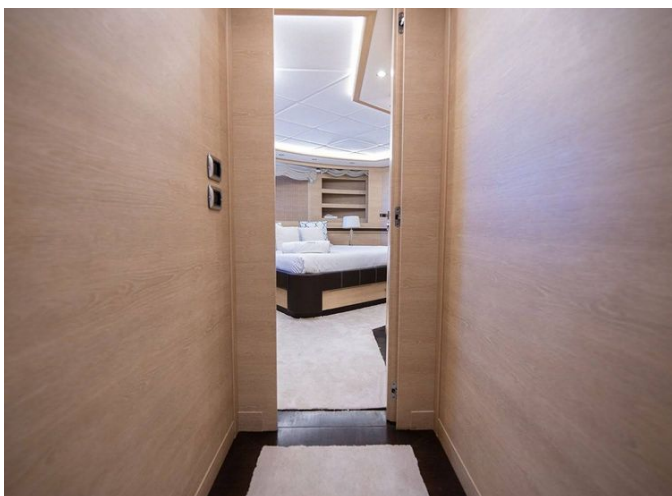
GALLERY

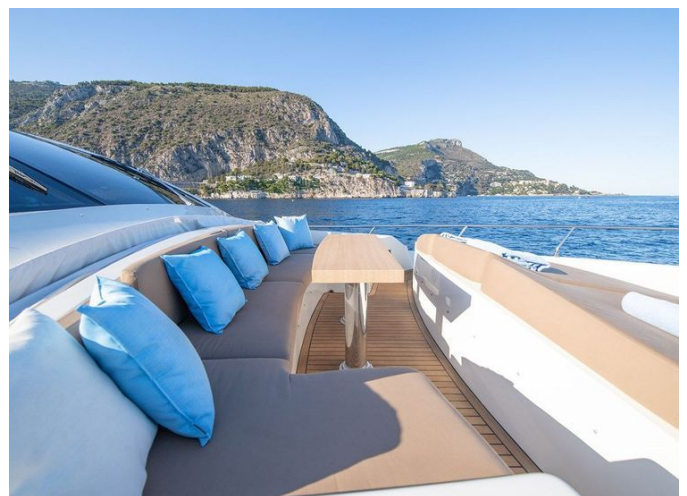


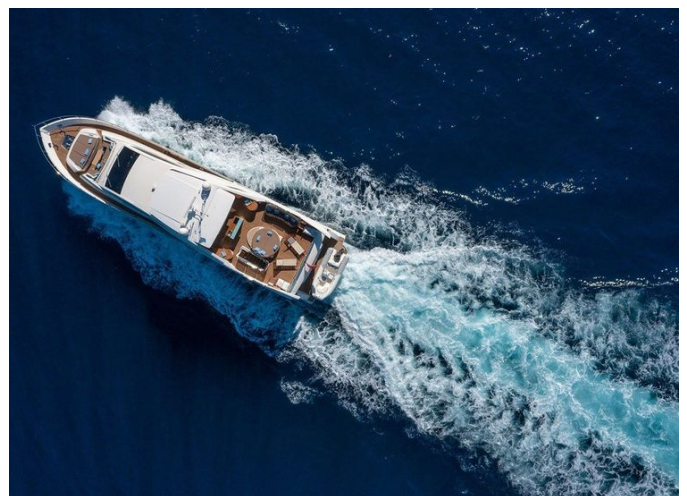


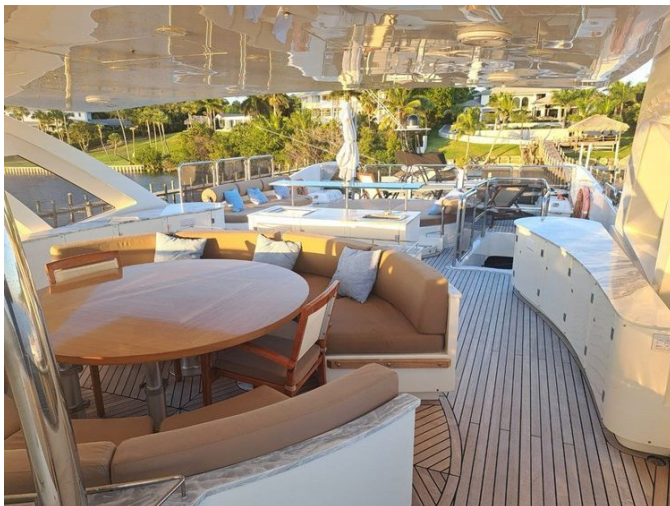














DETAILED DESCRIPTION

Complete specs

An elegant 96-foot motor yacht refreshed with a full new paint job in 2017, she presents with a large flybridge offering volume typically found on one hundred twenty foot plus yachts, delivers high performance with a top speed of 26 kn, and draws shallow for effortless Bahamas and intercoastal cruising. The interior showcases modern decoration and a massive 168 GT of volume, while tropical spec air conditioning is rated at 180,000 BTU. Outdoor living is enhanced by a large swimming platform and expansive bow seating and sunbathing area, and recent upgrades include a new ANG shore power converter installed in 2025 and new granite countertops throughout the flybridge.

Her principal dimensions underscore commanding presence and balance, with an LOA of 29.00 m (96'), a beam of 6.82 m (22' 5"), and a draft of 2.20 m (7' 2"). Built by Astondoa with naval architecture and exterior design also by Astondoa, she is a GRP planing hull motor yacht, delivered in 2009 with year refits noted as 201, and flying the BVI flag. Crew accommodations are arranged for up to four in two cabins. Power comes from two inboard diesel MTU 16V2000 M94 engines rated at 2,000 HP each, contributing to her substantial gross tonnage of 168 GT.

Performance is confident and efficient, with a maximum speed of 26 kn and a comfortable cruising speed of 20 kn. Her range is approximately 500 nm at 14 kn, and fuel burn is impressively documented across the curve: 170 L/h (45 US Gal/h) at 13 kn, 321 L/h (85 US Gal/h) at 16 kn, 415 L/h (110 US Gal/h) at 20 kn, 600 L/h (160 US Gal/h) at 23 kn, and 700 L/h (185 US Gal/h) at 26 kn.

Capacities are well suited for extended cruising, with 10,000 liters (2,645 US gallons) of fuel and 1,500 liters (400 US gallons) of fresh water. Guest

accommodation totals ten in four cabins, supported by crew quarters for four in two cabins.

Her mechanical and electrical suite is robust and meticulously maintained. The twin inboard diesel MTU 16V2000 M94 2,000 HP engines show Port 3,660 hours and Starboard 3,665 hours (March 2025), turning through two ZF gearboxes to two propellers, with precise low speed control aided by a hydraulic bow thruster. Ship's power is delivered by two KOHLER 40 kW generators with hours recorded as Port 6,318 and Starboard 7,287 (March 2025), complemented by a new ANG power converter fitted in 2025.

Freshwater independence comes via an Idromar watermaker, while climate control is assured by Condaria three chillers with an output of 150.000 BTU/h Tropical. Fuel systems feature direct suction from the structural GRP tank through two Racor fuel pre filters for reliable, clean delivery. Charging and inversion are handled by Mastervolt equipment, including a Mastervolt battery charger and a Mastervolt 500 W inverter. Battery groups are arranged as one of 740 A/H for general services at 24 volts, one of 592 A/H for starting motors at 24 volts, two of 148 A/H for auxiliary starting at 24 volts, and one of 148 A/H for emergency at 24 volts.

Deck equipment is specification rich. Ground tackle and handling include two Lofrans windlasses and two Lofrans capstans, working with two galvanized steel 105 kg anchors and two 220 m 12 mm chains. Boarding and swimming access are refined by an Opacmare telescopic passarelle with teak grating walking surface and an Opacmare bathing ladder, while day to day enjoyment is elevated by a generous swim platform aft and a foredeck designed with a large seating area and ample sunbathing space. The flybridge is conceived as a true open air salon, fitted with two fridges, an ice maker, a wet bar, and plumbing with pre installation for a Jacuzzi, and enhanced in 2025 by new granite countertops replacing the original wood finishes.

The galley is fully equipped for gourmet service, featuring one oven, one

dishwasher, one stovetop with five burners, one microwave, two refrigerators, two freezers, and one double sink. Laundry needs are met by one dryer and one washing machine.

Entertainment and connectivity are comprehensive throughout, led by Yamaha entertainment audio. The main salon features an LCD TV, each cabin is equipped with a TV, the flybridge benefits from a dedicated music system, and global access is supported by a KVH satellite installation.

Guest accommodations are curated for comfort and privacy, sleeping ten in four ensuite staterooms. The master cabin on the lower deck aft presents a king size bed, LED TV, BOSE media player, a walk in closet, a port side couch, a starboard desk and vanity area, carpet flooring, and an ensuite bathroom with a double sink. The VIP cabin on the lower deck forward offers a queen size bed, LED TV, BOSE media and sound system, carpet flooring, ample closets, a starboard couch, a starboard desk and vanity area, and an ensuite bathroom. The starboard guest cabin features a double bed plus a Pullman, a closet, carpet flooring, an LCD TV, a BOSE sound system, and an ensuite bathroom, while the portside guest cabin provides twin beds plus a Pullman, a closet, carpet flooring, an LCD TV, a BOSE sound system, and an ensuite bathroom. Crew arrangements sleep four in two ensuite cabins.

At the helm, navigation and control systems are professional grade, including a Simrad auto pilot and an integrated Raymarine E120 suite comprising depth sounder, radar, chart plotter, and GPS. Communications and data coverage are provided by KVH Fleet 33 Inmarsat and VHF, with DSC audio integrated alongside the vessel's visual entertainment systems.

Safety and monitoring are equally comprehensive, with two life rafts, thirty two life jackets, two life rings, an FM 200 engine room fire fighting system, bridge auto fire suppression, twelve fire extinguishers, and a CCTV system.

On the water, the tender and toys complete the experience, led by a Zodiac

Yachtline 470 with a 50 HP outboard engine and a playful selection of inflatables, paddle boards, and fishing equipment.

A conscientious refit history underpins her immaculate condition and modernized amenities. Highlights include a new shore power converter (ANG) in 2025 and new granite countertops across the sun deck replacing the original wood the same year; in 2023, the shafts were removed and serviced, all six cutlass bearings were replaced, and all batteries were renewed. The 2017 works encompassed a full paint job, special wrapping of all interior furniture, Sicka Flex redone on the teak decks, and new soft goods throughout.

CONTACTS

Shestakov Yacht Sales is a brokerage company specializing in the sale and service of yachts worldwide. The company offers services for buying and selling both new and used motor yachts, sailing vessels, and luxury superyachts. They also provide yacht registration, insurance, technical maintenance, crew selection, and charter organization services across the U.S., Canada, Latin America, the Caribbean, and the Bahamas.

The founder and lead broker of the company is Andrey Shestakov, a licensed and certified expert with extensive experience in marine engineering and shipbuilding.

The company has an extensive network of partnerships with major yacht manufacturers worldwide and provides services in multiple languages, including Russian, Ukrainian, Spanish, and English. The office is in Dania Beach, Florida, USA.

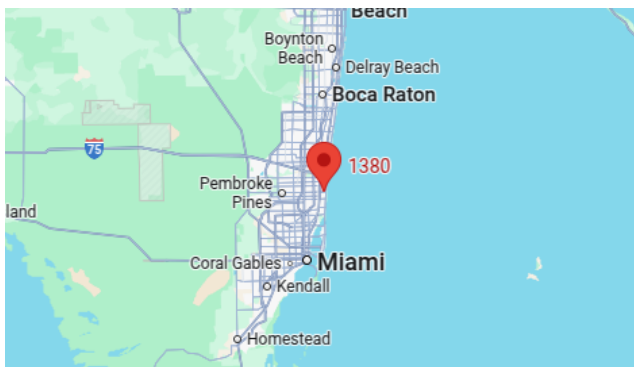
For more information and to view available yachts, you can visit the company's official website: <https://shestakovyachtsales.com>

Contact details

Phone: +1(954)274-4435

Email: andrey@shestakovyachtsales.com

Address



1380 Weeping Willow Way, Hollywood,
Florida 33019