



SHESTAKOV

Yacht Sales

OASIS (COPY) - PRINCESS



Builder: [PRINCESS](#)

LOA: 95' 0" (29.11 m)

Year Built: 2010

Beam: 23' 0" (7.06 m)

Model: 95 Motor Yacht

Max Draft: 19' 8" (6 m)

Price: \$2,999,000 USD Subject to change.

Cruising Speed: 20 Knots (23.02 MPH)

[See full listing on our website](#)

Location: Hillsboro Beach, United States

Max Speed: 28 Knots (32.22 MPH)

If you would like to buy a yacht **OASIS (COPY) - PRINCESS** or would like help answering any questions concerning purchasing, selling, or chartering a yacht, please call **+1(954)274-4435** or click here on <https://shestakovyachtsales.com>

TABLE OF CONTENTS

OVERVIEW	3
SPECIFICATIONS	5
Basic Information	5
Dimensions	5
Speed, Capacities and Weight	5
Accommodations	5
Hull and Deck Information	6
Engine Information	6
GALLERY	7
CONTACTS	30

OVERVIEW

Step aboard the 2010 Princess 95 Motor Yacht and discover a vessel that marries a distinguished lineage with sea-going assurance and refined style. Measuring 96 feet overall and built on a deep V GRP hull, this flybridge superyacht presents sleek, timeless lines and confident seakeeping whether cruising along coastal waters or embarking on extended blue water passages. Propelled by twin MTU 16V 2000 M93 diesels producing 2,400 hp apiece, she offers thrilling performance with a comfortable cruise near 20 knots and a top end approaching 28 knots; engineering precision and Princess craftsmanship combine to deliver a planted, composed ride and the exhilaration expected of a true performance yacht. The interior unfolds in a generous, flowing plan conceived for entertaining and repose, moving from an expansive salon through a formal dining area to broad exterior decks that create varied social environments for family and guests. Staterooms are elegantly appointed to emphasize privacy and comfort, with contemporary amenities consistent with her class. Meticulously maintained and presented turnkey, this Princess 95 is equally suited as a private retreat, a family cruising platform, or an impressive venue for sophisticated entertaining, proven by enduring design and sea-worthy capability. Accommodation is arranged for 8–10 guests across five cabins including a full beam owner's suite, a VIP stateroom and three further guest cabins, while a professional crew of 4–5 is comfortably housed in three crew cabins; guest facilities comprise four en suite bathrooms plus a day head and comprehensive crew amenities, ensuring smooth service on board. Her specification reads like a roll call of superyacht essentials: stabilization (many sisterships fitted with zero speed systems), bow and stern thrusters and dual station helm controls on both the flybridge and main deck. Teak laid decks and a hydraulic bathing/swim platform enhance the exterior, while the expansive flybridge invites alfresco living with a wet bar, grill and abundant sunbathing space. Panoramic glazing in the main salon frames sweeping

outlooks beside a formal dining area, and a fully equipped galley together with modern navigation and entertainment suites complete her luxury credentials. The inventory is notably comprehensive: a power assisted hydraulic steering system is complemented by a dual station hydraulic bow thruster rated at 550 kgf (1,213 lbf) and a dual station hydraulic stern thruster at 300 kgf (661 lbf). Twin hydraulic anchor winches with twin anchors are operable from both stations and are supported by dual station color radar and a chartplotter/GPS integrated with autopilot and Navtex. Electric trim tabs with position indicators, a speed and distance log, an echo sounder with alarm, a remote control searchlight and VHF DSC R/T are duplicated at both helms. The galley is fitted with twin combination microwave/conventional ovens, a refrigerator and deep freeze with ice maker and a dishwasher, while the saloon benefits from twin refrigerators and a dedicated wine cooler. Boarding and water access are effortless via a 4.7 m telescopic passerelle with remote control, twin transom gates to the bathing platform, side boarding doors to port and starboard and a hot and cold transom shower. Deck handling and practicality are further enhanced by a flybridge crane, 24 volt stern rope mooring winches, teak soles on the side decks, cockpit and flybridge, stern docking lights and a third docking station in the cockpit. Ship's services are robust, with twin 40 kW diesel generators, twin shore support inlets and twin 100 amp float battery chargers supplying full air conditioning throughout. Entertainment systems include a saloon LCD TV with DVD/radio and surround sound and LCD TVs with DVD/radio units in all cabins. Everyday convenience and crew efficiency are assured by opening doors to both side decks, well planned crew accommodation, a dedicated laundry and a vacuum WC system. Elegant yet purposeful, powerful yet refined, this Princess 95 flybridge yacht delivers a rare synthesis of luxury, capability and presence on the water.

SPECIFICATIONS

Basic Information

Model Year:
2010

Country:
United States

Year Built:
2010

Dimensions

LOA:
95' 0" (29.11 m)

Max Draft:
19' 8" (6 m)

Beam:
23' 0" (7.06 m)

Speed, Capacities and Weight

Cruise Speed:
20 Knots (23.02 MPH)

Water Capacity:
1600 Gallons

Max Speed:
28 Knots (32.22 MPH)

Fuel Capacity:
2900 Gallons

Accommodations

Total Heads:
6

Hull and Deck Information

Hull Material:

Fiberglass and Plastic Yachts

Hull Designer:

N/A

Deck Material:

Fiberglass

Interior Designer:

N/A

Hull Configuration:

Monohull

Engine Information

Engines:

2

Engine Type:

Inboard

Manufacturer:

MTU

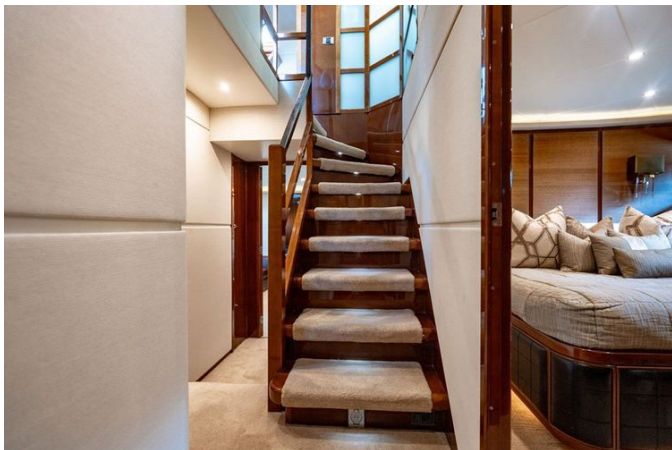
Fuel Type:

Diesel

GALLERY



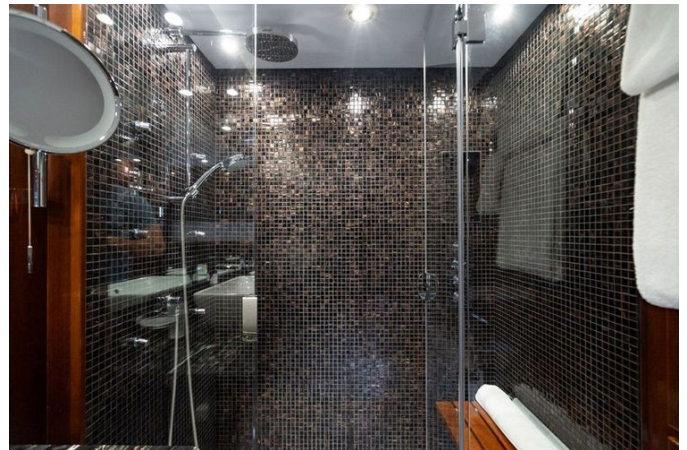








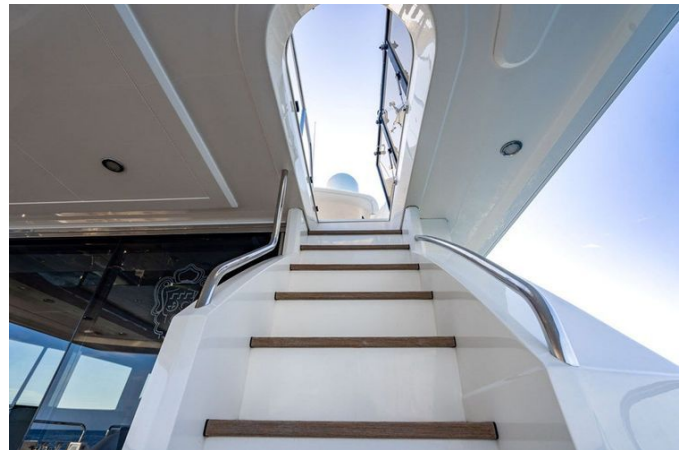








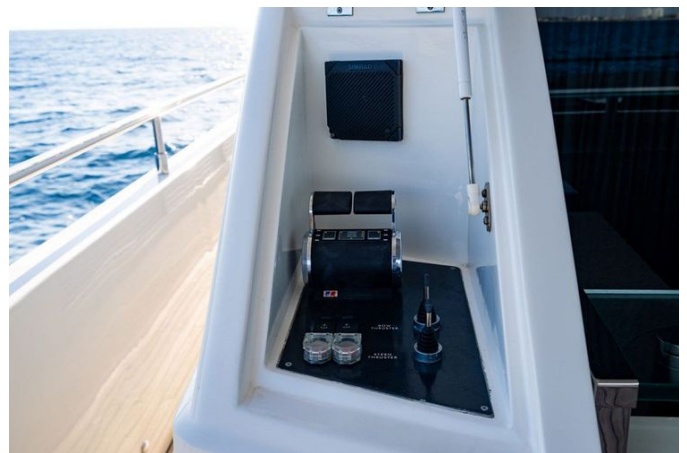








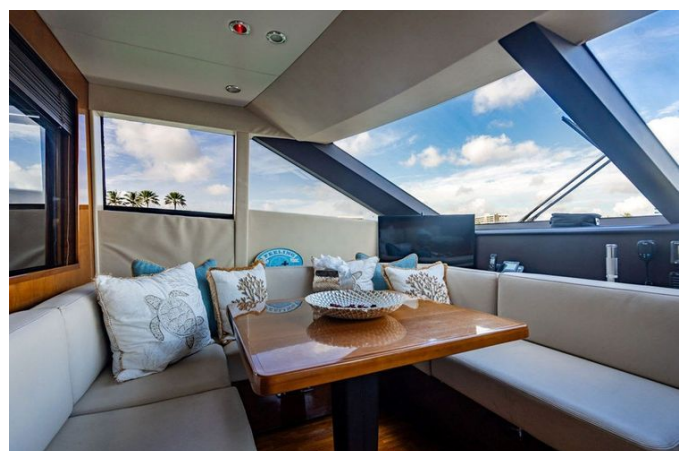






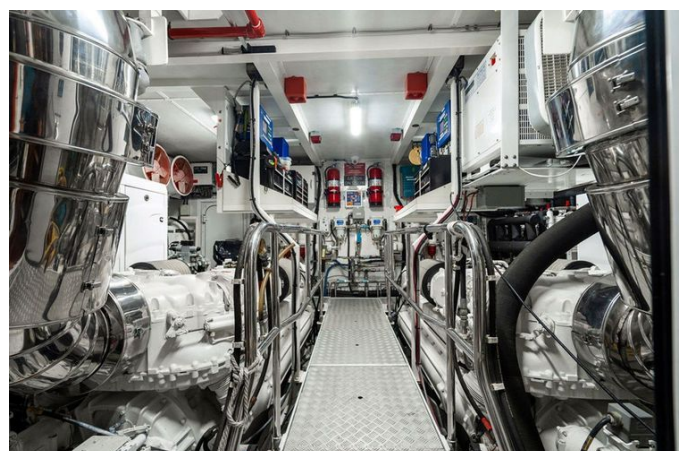
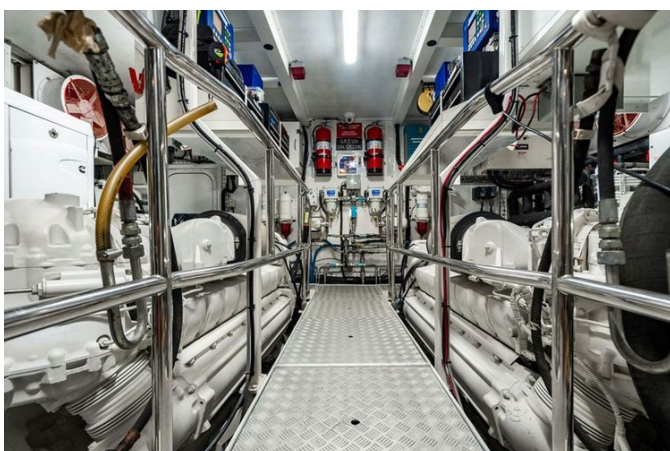


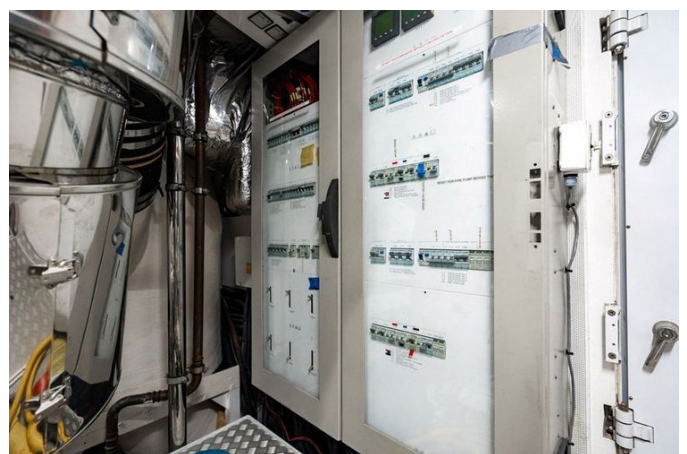
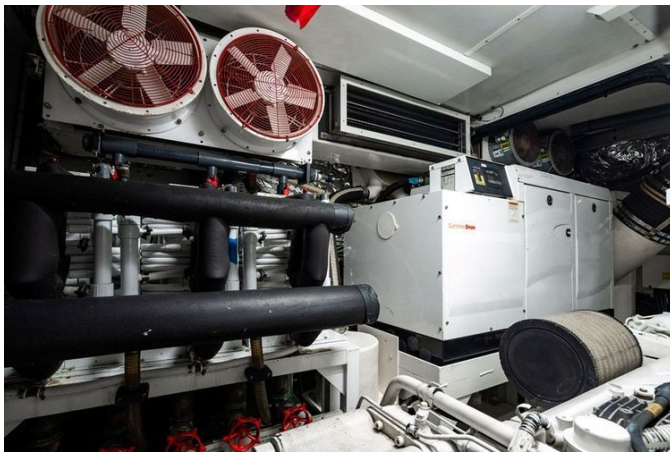
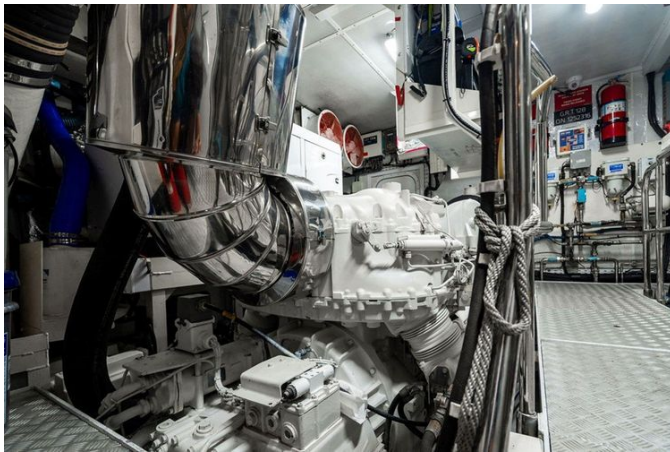












CONTACTS

Shestakov Yacht Sales is a brokerage company specializing in the sale and service of yachts worldwide. The company offers services for buying and selling both new and used motor yachts, sailing vessels, and luxury superyachts. They also provide yacht registration, insurance, technical maintenance, crew selection, and charter organization services across the U.S., Canada, Latin America, the Caribbean, and the Bahamas.

The founder and lead broker of the company is Andrey Shestakov, a licensed and certified expert with extensive experience in marine engineering and shipbuilding.

The company has an extensive network of partnerships with major yacht manufacturers worldwide and provides services in multiple languages, including Russian, Ukrainian, Spanish, and English. The office is in Dania Beach, Florida, USA.

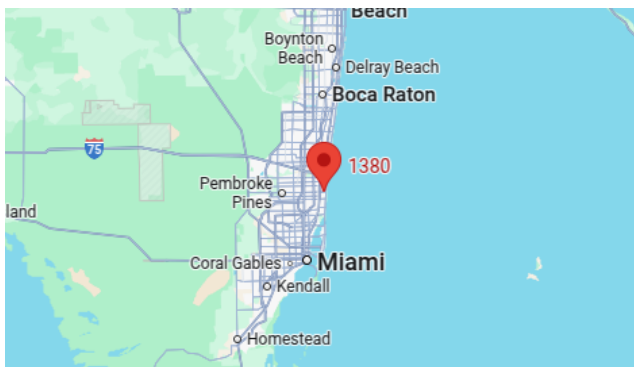
For more information and to view available yachts, you can visit the company's official website: <https://shestakovyachtsales.com>

Contact details

Phone: +1(954)274-4435

Email: andrey@shestakovyachtsales.com

Address



1380 Weeping Willow Way, Hollywood,
Florida 33019