

## OSSUM DREAM - HARGRAVE



**Builder:** [Hargrave](#)

**LOA:** 96' 0" (29.26 m)

**Year Built:** 2005

**Beam:** 20' 0" (6.10 m)

**Model:** Capri Skylounge

**Min Draft:** 19' 2" (5.83 m)

**Price:** \$1,795,000 USD Subject to change.

**Max Draft:** 19' 8" (6 m)

[See full listing on our website](#)

**Location:** Fort Lauderdale, United States

**Cruising Speed:** 19 Knots (21.86 MPH)

**Max Speed:** 22 Knots (25.32 MPH)

# TABLE OF CONTENTS

**OVERVIEW ..... 3**

**SPECIFICATIONS ..... 4**

    Basic Information ..... 4

    Dimensions ..... 4

    Speed, Capacities and Weight ..... 4

    Accommodations ..... 4

    Hull and Deck Information ..... 5

    Engine Information ..... 5

**GALLERY ..... 6**

**DETAILED DESCRIPTION ..... 19**

**CONTACTS ..... 38**

## OVERVIEW

---

\$100,000 price adjustment—now offered at \$1,795,000 (March 3, 2026).

The 96' 2005 Hargrave Capri Skylounge "OSSUM DREAM" has been positioned for a prompt sale, presenting compelling value within the Hargrave 96-foot category of luxury motor yachts. Substantial recent capital upgrades—highlighted by new 30 kW generators (2024), a new A/C plant, serviced and overhauled watermakers, refreshed interior flooring, a teak swim platform, and a redesigned galley—reflect thoughtful investment already completed for her next steward.

Her arrangement enhances everyday enjoyment and extended cruising alike, with a welcoming country-kitchen galley, a generous salon, an enclosed skylounge, four ensuite staterooms, and crew quarters for 3–4. Coupled with consistent mechanical care, this semi-custom skylounge superyacht presents as a well-prepared yacht for sale at a distinctly competitive ask.

# SPECIFICATIONS

---

## Basic Information

---

**Model Year:**  
2005

**Country:**  
United States

**Year Built:**  
2005

## Dimensions

---

**LOA:**  
96' 0" (29.26 m)

**Beam:**  
20' 0" (6.10 m)

**Min Draft:**  
19' 2" (5.83 m)

**Max Draft:**  
19' 8" (6 m)

## Speed, Capacities and Weight

---

**Cruise Speed:**  
19 Knots (21.86 MPH)

**Water Capacity:**  
600 Gallons

**Max Speed:**  
22 Knots (25.32 MPH)

**Fuel Capacity:**  
3429 Gallons

## Accommodations

---

**Total Heads:**  
6

**Crew Cabin:**  
2

## Hull and Deck Information

---

**Hull Material:**

Fiberglass and Plastic Yachts

**Hull Designer:**

Hargrave

**Deck Material:**

Fiberglass

**Interior Designer:**

Hargrave

**Hull Configuration:**

Semi-Displacement

## Engine Information

---

**Engines:**

2

**Engine Type:**

Inboard

**Manufacturer:**

Caterpillar

**Fuel Type:**

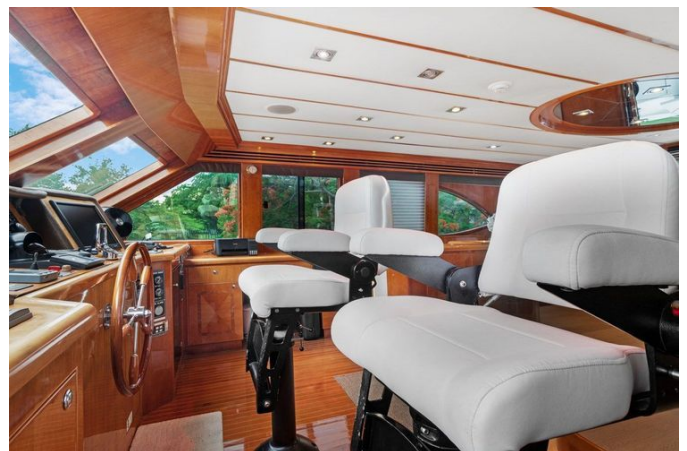
Diesel

# GALLERY













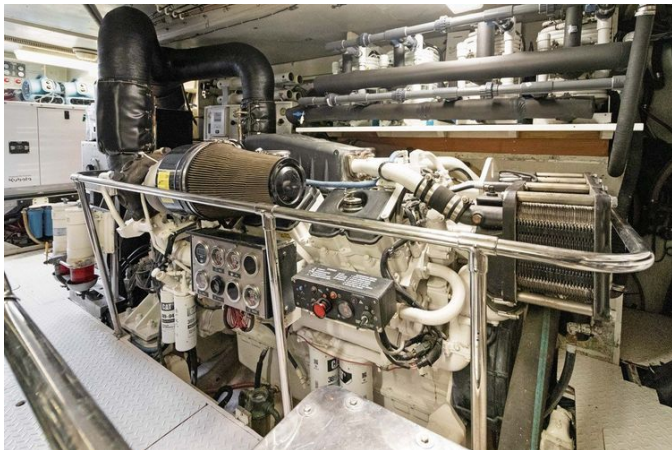














---

# DETAILED DESCRIPTION

---

## Walkthrough

---

Step aboard the 96' 2005 Hargrave Capri Skylounge "OSSUM DREAM" via the Swim Platform or through the side boarding gates on the Aft Deck, where a generous expanse offers both fixed and loose seating. Open steps rise to the Boat Deck, while a sliding door ushers you into the Salon, anchored to port by a three-person walk-behind bar and, forward, a six-cushion sofa. To starboard, a 55-inch TV is complemented by six storage cabinets, with two swivel chairs positioned forward.

Further forward, a six-place dining table sets the scene for elegant meals, adjacent to stairs that ascend to the Skylounge or descend to the cabins. Next forward lies the large Country Kitchen Galley with a large built-in dinette, while the Day Head is positioned opposite the dining table.

Two crew cabins and one head are situated forward. The main accommodation steps lead aft to a large Master Cabin with His and Hers Heads separated by a separate head and shower.

Forward rests a queen-size VIP Cabin, while between are a twin cabin and a double-berth cabin, all ensuite.

The Skylounge features a built-in settee, a desk, and the Pilothouse area with updated Navionics, with access conveniently set adjacent to the dining area.

Aft on the Boat Deck, enjoy a hot tub, a bar, a tender with a crane, and an open area designed for loose seating.

## Salon

---

Entry is via an electrically operated sliding glass door to starboard, revealing a bright, airy salon illuminated by large house-side windows and grounded by a

new light tan laminate sole. High-gloss cherry joinery with burlwood accents adds polish and warmth, while the salon stretches uninterrupted to the galley bulkhead, creating a footprint notably longer than a similar-sized raised pilothouse Hargrave model.

Immediately to port, a sophisticated walk-behind bar invites conviviality with three bar chairs at a lower-level countertop. The bar's working area features a raised Corian-type countertop, a stainless-steel bar sink, and a U-Line cherry-front bar fridge, complemented by four large cabinets below. Overhead, three white Lucite cabinets for glassware glow softly from within, and an aft sliding window allows seamless service to guests on the aft deck.

Next forward to port, a six-cushion upholstered sofa with custom storage beneath faces a unique coffee table that incorporates a cushioned seating surface and concealed storage. To port upon entering, the entertainment center showcases a 55-inch Samsung Smart TV above two cabinet doors that conceal a Denon Incommand AV receiver, two Nuvo Power amplifiers, a Samsung Blu-ray player, and a DirecTV HD DVR receiver. Continuing forward, a four-cabinet banquet table provides dedicated dinnerware storage with four drawers within, followed by two attractive Lazy Boy swivel rockers flanking a small mirrored end table.

Six house-side windows to port and starboard are dressed with electric white fabric Duette shades, each mullion accented by a modern LED sconce, while outboard cabinets below offer convenient occasional storage. Overhead, a square inset tray ceiling is framed by twenty LED lights, with five-channel stereo speakers integrated above. Digital A/C controls and a Cantalupi LED color-changing digital light control govern multiple lighting features that, when not illuminated, blend into the décor with effortless discretion.

## Dining salon

---

Open to the Main Salon aft yet defined as its own distinct space by cabinetry

forward of the sofa, the Dining Salon balances connection and privacy with effortless grace. Overhead, a ceiling detail mirrors the elegant oval of the table below, its form anchored by a unique round fixed chandelier.

The oval dining table seats six on upholstered low-back chairs and is encircled by nine cherry cabinets dedicated to glassware. Forward, a marble-topped, four-door cabinet provides refined storage and presents the perfect place for your prized artwork to hang above. Complementing this is a two-cabinet, seven-shelf cabinet tailored for table-setting accessories. To starboard, curved stairs rise to the Skylounge and descend to the Accommodation Deck, alongside the Day Head. Overhead illumination comes from thirteen LED mini spots, while two stereo speakers enrich the ambiance. Large side-deck windows to port and starboard are fitted with electric shades.

## Day head

---

Generously proportioned, the day head features a bow-front cherry cabinet with two cabinet doors below, crowned by an oval white china sink set upon a da Selvia marble countertop. A full-size Headhunter toilet complements the Selvia marble sole, while the mirrored ceiling, illuminated by five LED lights and supported by an exhaust fan, ensures a bright, refined ambiance.

## Galley

---

Set just forward behind a sliding cherry pocket door, the galley is bathed in natural light from eleven windows, creating a bright, airy ambiance. Appliances are thoughtfully arranged to port and starboard around light, semi-translucent onyx countertops, while a matching onyx-topped island anchors the space with ample storage below and houses a Manitowoc stainless steel 'wet' icemaker. Culinary capability is assured with a Wolf induction four-place cooktop, a Miele wall oven, an Italian SMEG built-in microwave, and an LG stainless steel built-in

microwave with work light and exhaust fan, new in 2023. Cold storage and refreshments are elegantly handled by a KitchenAid stainless steel French door fridge/freezer, a Whirlpool stainless steel dishwasher, an extra-large undermount stainless steel sink with removable spray faucet and an InSinkErator disposal, and to starboard, two cherry-faced Sub-Zero refrigerator drawers, two cherry-faced Sub-Zero freezer drawers, and a Sub-Zero glass-door wine cooler.

Exquisite joinery and finishes elevate the environment, including nineteen high-gloss cherry doors and four high-gloss cherry drawers, an Amtico planked sole underfoot, and Duette shades that temper the sun. Illumination is both practical and atmospheric, with undercounter LED lighting supplemented by sixteen overhead LED mini spots, while a 28-inch Samsung TV keeps the chef connected. A raised settee comfortably seats four to five around a granite table on a twin wood pedestal base with a glass tabletop, and a four-shelf pantry stands ready for extended provisioning. Practical touches abound, such as two storage cabinets forward, a pantograph side-deck door to starboard framed in wood, a smoke/fire detector, and digital air-conditioning controls, completing a galley designed to be as beautiful as it is functional.

## Skylounge

---

Ascend ten covered steps adjacent to the dining table to arrive at the skylounge, a refined retreat designed for elevated views and relaxed conversation. To port, a large L-shaped upholstered settee set on a raised platform with storage below offers excellent seated visibility, with an oval coffee table perfectly positioned in front. To starboard, inboard of the stairs, a curved cabinet houses a 40" Sharp TV, while just aft of the stairs an AV cabinet integrates a Denon AV receiver, a Direct TV HD+DVR receiver, a KVH VSAT receiver, and a subwoofer. Aft, a large sliding double-pane door opens to the Boat Deck, seamlessly blending indoor comfort with open-air enjoyment.

Forward to starboard, an Owner/Captain's desk presents three drawers, two cabinets, and a generous work area. The large side windows are dressed with electric Duette shades, and two windows—one to port and one to starboard just aft of the helm—slide open as needed to welcome fresh breezes.

Commanding the bow is the full-beam helm with two newly recovered Stidd helm chairs complete with footrests. To port, outboard of the helm, a cabinet conceals a U-line drink fridge and icemaker, while forward, two Sub-Zero refrigerated drawers and a hinged door provide access to the expansive area beneath the helm. Overhead, twenty LED mini spots and a round ceiling detail with six additional LED mini spots craft a sophisticated, brilliantly lit ambiance.

## Helm equipment

---

Commanding the helm is a comprehensive suite led by a Furuno 12kW 6' radar scanner partnered with a Furuno 6kW 4' radar scanner, a Furuno heading sensor, a Furuno network WAS GPS, and a Furuno network sounder, delivering precise situational awareness. Navigation is anchored by a Simrad A-25 autopilot and two Furuno Nav Net key pads feeding a 19" Big Boy color monitor dedicated to Nobeltec Navigation, complemented by a 19" Big Boy color CCTV monitor and Nobeltec Visual Navigation Suite software for chart navigation. Clear communications arrive via an ICOM M423 VHF with DSC and an ICOM M602 VHF with DSC, while depth and wind data flow from two Raymarine ST 60+ depth units—port transducer and starboard transducer—and a Raymarine wind instrument. Engine and propulsion oversight includes two CAT LCD engine monitors, Glendinning fully electronic engine controls, new 2021, a Glendinning wired remote control for engines, Naiad bow thruster controls with joystick, Naiad Marine Multisea II digital stabilizer controls, and synchronizer controls. Positioning and heading fidelity are reinforced by a Furuno GP150 GPS/data and a Danforth 5" magnetic compass. Night operations benefit from two ACR RCL-100 searchlights with

remote controls, three Speich wipers/washers, Maxwell windlass controls, and five bilge pump monitor/controls with high water alarm, supported by one Sea-Fire override control and six Wema fuel tank gauges. Practical touches include key start/stop switches, a three-panel windshield with three pleated sliding shades, two water gauges for the 152-gallon and 485-gallon tanks, and a varnished helm wheel.

## Accommodation foyer

---

Descending eight curved laminate steps just aft of the rise to the Skylounge, you arrive in the main accommodations foyer, where high-gloss cherry bulkheads—an invigorating change from vinyl—are complemented by an inset ceiling treatment and mirrored accents that enhance light and volume. Forward, a cabinet discreetly houses a GE washer and dryer behind two cherry doors, while two curved doors provide generous stewardess storage; aft, the twin-door entrance to the Master offers a suitably grand welcome. Forward to port, a twin berth ensuite cabin provides flexible sleeping, to starboard a custom queen ensuite cabin delivers expansive comfort, and all the way forward the full beam VIP Suite commands the bow with confident presence.

## Master cabin

---

Entered via twin arched cherry doors, the master suite centers on the aft bulkhead with a king-size berth whose upholstered headboard is set against two-panel horizontal mirrored bands and capped by a small vinyl soffit. Beneath the berth, four drawers and subtle rope lighting provide practical elegance, while burlwood-topped nightstands to either side each enjoy a reading light above, complemented by four dedicated reading lights recessed into the mirrored soffit.

On the opposite bulkhead, a 40" Samsung LED TV provides effortless

entertainment.

To port, moving aft, a double-door, cedar-lined, auto-lit hanging locker precedes a vanity with upholstered stool and hinged top, with a bank of four large drawers farthest aft; above, two large fixed deadlights sit behind sliding Soji screens. Continuing aft is the door to the port His/Hers Head.

To starboard, starting forward, a walk-in locker is followed by three cabinets and a large two-door, auto-lit, cedar hanging locker mirroring that to port, then a seat and two deadlights behind sliding Soji screens; next aft are four drawers and the door to the starboard His/Hers Head.

Illumination is assured by sixteen overhead LED mini spots, enhanced by LED rope accent lighting over a newly carpeted sole, and an escape hatch to the salon is positioned to starboard.

## Master his/hers head

---

Identical his-and-hers heads flank a Jacuzzi tub and a separate shower fitted with a handheld or wall-mounted fixture, complemented by a rain fixture overhead. Twin glass doors and matching side lights enhance the sense of space, while the shower is further appointed with three overhead lights and an exhaust fan. Each head features a bow-front vanity with one drawer and three cabinets below, a marble countertop with a Kallista-design above-mount china sink, a medicine cabinet, and an additional cherry cabinet. Outboard above the Headhunter full-size toilet, a fixed oval deadlight rests behind a sliding Shoji screen. The sole is light marble, and the mirrored overhead is illuminated by eight LED mini spots.

## Port guest cabin

---

Entered via the forward end, the Port Guest Cabin reveals twin single berths arranged aft, with a Pullman above the inboard berth. Each berth offers two

drawers below, and centered between them is a two door, three drawer nightstand. The headboard is upholstered, and above it a mirrored panel holds a single sconce light. Outboard of the berth, sliding Soji panels frame an opening stainless steel porthole, while at the foot of the outboard berth a cedar lined auto lit hanging locker stands ready for personal belongings. Entertainment is thoughtfully provided by a 24" Samsung LED TV, an Aquatic AV AM/FM/CD/DVD player, two speakers, and six additional LED mini spots that elevate the ambiance. All the way forward is the entrance to the ensuite Guest Head.

## Port guest head

---

Thoughtfully appointed, the port guest head features a graceful bow-front vanity with three cabinet doors and a drawer below, topped by a marble countertop that cradles a Kohler undermount china sink, while above, two mirrored medicine cabinet doors provide both storage and reflection. The stall shower is enclosed by a clear glass door and includes an opening stainless steel porthole, a wall-mounted or handheld fixture, a marble seat, a dedicated light, and an exhaust fan for comfort and ventilation. The sole is finished in light marble, and the mirrored overhead with four halogen mini spots bathes the space in a warm, sophisticated glow.

## Starboard side guest cabin

---

Entered via the aft end, the starboard-side guest cabin reveals an athwartship queen-size berth set off the forward bulkhead, with two drawers beneath and a dedicated LED reading lamp overhead. Aft sits a single-door, one-drawer nightstand, with a cedar auto-lit hanging locker just beyond. Above the headboard, sliding Soji panels frame an opening stainless-steel porthole, while at the foot of the berth a double-door cabinet is paired with a 24-inch Samsung

TV. Above the nightstand, an Aquatic AV AM/FM/CD/DVR player partners with two speakers, and six additional LED mini spots provide refined illumination. All the way aft lies the entrance to the ensuite guest head.

## Starboard guest head

---

The Starboard Guest Head presents a bow-front vanity with two cabinet doors and a cabinet below, topped by a marble countertop with a Kohler undermount china sink, while above, two mirrored medicine-cabinet doors provide elegant, practical storage. The curved stall shower features a clear glass hinged door, a wall-mounted or handheld fixture, a dedicated light, and an exhaust fan for optimal comfort and ventilation. Completing the space, the head's sole is finished in light marble, and the mirrored overhead is accented by four halogen mini-spots.

## VIP cabin

---

The starboard guest head showcases a bow-front vanity fitted with two cabinet doors and a cabinet below; above, a marble countertop cradles a Kohler undermount china sink, while two mirrored medicine-cabinet doors provide refined storage. A curved stall shower is enclosed by a clear glass hinged door and appointed with a wall-mounted or handheld fixture, a dedicated light, and an exhaust fan for effortless comfort and ventilation. The sole is finished in light marble, and the mirrored overhead is accented by four halogen mini spots that cast a crisp, even glow.

## VIP head

---

To starboard, the VIP head is appointed with a bow-front vanity fitted with two cabinet doors below, a light marble countertop, and an undermount china

sink, while above, two mirrored medicine cabinet sliding doors provide elegant storage. The stall shower is enclosed by a clear glass door and features a handheld or wall-mounted fixture, a marble seat, an LED light fixture, an exhaust fan and light, plus a two-door storage cabinet. The toilet is a full-size Headhunter model. Completing the space is a white overhead with four LED mini spots and an A/C vent, and the sole is finished in light marble.

## Foredeck

---

The foredeck is finished with fiberglass non-skid decks and raised fiberglass bulwarks capped by hoop-type stainless steel rails, complemented by ample freeing ports and international navigation lights for confident passages. Ground tackle is handled by one Maxwell 4000 vertical electric windlass with two up and down foot switches, feeding two deck-access chain lockers and servicing one 250-pound stainless steel CQR-type plow anchor on a stainless steel anchor chute with approximately 300 feet of chain. Practical detailing includes a starboard water fill; two starboard-side fuel fills servicing the master tank of 615 gallons and the guest tank of 759 gallons; a port VIP tank fill of 495 gallons; and a starboard waste pump-out. Comfort and utility converge at the bow seat with sun lounge cushions and covers, a bow burgee staff, and port and starboard bow dunnage boxes built into the trunk cabin, while a washdown spigot sits to port forward of the trunk storage.

Seamanship features abound, including spring line cleats—two to port and two to starboard—along with port and starboard hinged side gates for easy boarding. Movement around the house is secure thanks to an overhead handrail along the house-side windows exclusively at the walkaround decks, with all windows frameless for a clean, modern profile. Enhancing functionality and service, there is low-level LED lighting with four fixtures to port and four to starboard, two starboard-side 100-amp power inlets, a water pressure regulator, and a Hubbel phone/TV inlet. A starboard cabin-side pantograph

door in the galley completes this meticulously equipped foredeck.

## Crew lounge forward

---

Down six carpeted steps from the Galley, the crew area unfolds with an inviting L-shaped settee and a burlwood table at the base of the stairs, while a 24" Samsung TV to starboard faces the settee for effortless relaxation. Outboard, above the settee, are three cherry storage cabinets and an opening stainless steel porthole, with four additional cabinets above, providing generous and practical stowage. Inboard sits a new Miele washer and Miele dryer, and at the stairs the yacht's main accommodation electrical panel is neatly positioned for convenient access. The sole is finished in classic teak and holly, with the Captain's cabin forward and the crew to port.

## Crew cabin

---

Positioned all the way forward, the crew cabin combines smart utility with comfort, featuring over under bunks to starboard. A seven step vertical ladder provides direct access to the forward deck hatch, while aft to starboard a cabinet integrates a hanging locker above with a drawer below, complemented by two additional drawers beneath the lower berth for ample storage. On the aft bulkhead, a 28" Samsung TV pairs with digital air conditioning controls to deliver entertainment and precise climate management.

## Crew head

---

The crew head features a bow-front vanity with two cherry doors beneath and a granite top with an undermount Kohler china sink. Above, two mirrored medicine-cabinet doors provide elegant storage. The stall shower is appointed

with a clear-glass two-piece door, a handheld or wall-mounted fixture, and a granite seat and shelf. Overhead, four LED mini spots illuminate the space, while two cherry cabinets sit above the full-size Headhunter toilet. The sole is finished in marble tile, and a large deck hatch overhead brings in abundant natural light and ventilation.

## Captain's cabin

---

Entered from the forward end, the captain's cabin to port presents a double-berth arrangement with a removable single berth above, complemented by two drawers beneath the lower berth for practical storage. Outboard sits an auto-lit, cedar-lined hanging locker, while a 24-inch Samsung TV faces the berth for effortless viewing. Overhead, four LED mini spots provide crisp illumination, the sole is carpeted for comfort underfoot, and forward lies access to the shared head.

## Aft deck

---

The aft deck is beautifully finished with teak over fiberglass decks, setting a warm and sophisticated tone for alfresco living. A curved aft settee accommodates four in comfort with removable cushions and a dedicated cover, while a large high-gloss varnished teak table, mounted on twin stainless-steel adjustable bases and supplied with its own cover, creates a focal point for dining and entertaining. Complementing the ensemble are five loose teak chairs with matching cushions and a cover, all illuminated by fifteen overhead stainless-steel-trimmed LED lights that cast an inviting evening glow. Eight teak-tread steps with a sturdy handrail lead up to the boat deck, and a custom cabinet is neatly tucked beneath the flybridge stairs. Thoughtful details include an aft-looking CCTV camera, port and starboard hinged boarding gates for versatile access, and a six-step UMT Tide Ride ladder with handrail and a

dedicated storage cabinet. Entertainment is enhanced by two stereo speakers, new in 2023, seamlessly integrated into the space.

Functionality meets refinement to port with a fiberglass cabinet housing two refrigerator drawers and two additional cabinets, while critical systems are close at hand with an emergency escape hatch from the engine room and a stern door providing direct entry. On the starboard side of the aft deck, a Maxwell 2200 warping windlass stands ready for precise line handling. Movement to the water is effortless via port and starboard hinged stainless-steel gates leading to the swim platform, accessed by five port and five starboard teak-tread steps illuminated with step lights and flanked by stainless-steel rails. Safety and security are further assured by four stainless-steel hoop rails to port and four to starboard. The integral swim platform is finished in teak over FRP and is serviced by two lockers with electrical and cable TV inlets, two pop-up tender cleats, and an aft-deck shower cabinet. A shore water hookup with pressure regulator simplifies dockside connections, an emergency fire pull lever is discreetly concealed within a cabinet, and two storage lockers keep lines and other gear organized. Rounding out the utility of this meticulously planned deck are a lazarette access hatch to the steering gear and the convenience of a stern door into the engine room.

## Boat deck

---

Elegantly laid in faux teak, the boat deck is accessed through a glass and stainless steel sliding hatch over the steps from the aft deck, and is secured by stainless steel hoop rails around the perimeter. A Quick Lift 2500 lb. power rotation davit stands ready with a new motor, new cable, and a freshly painted finish, while a removable six-step stainless ladder rises to the skylounge hardtop. Leisure is centered around a round built-in four-to-five-person spa tub with teak access steps and a new cover, complemented by L-shaped FRP

seating framing a square varnished wood table with four folding chairs for the table. Illumination comes from two LED lights facing aft, new 2/20, and three overhead lights at the aft brow of the skylounge, supported by low-level courtesy lights for understated ambiance. Entertainment is delivered through two Bose stereo speakers, and safety is enhanced by one throw ring with retrieval rope, a life sling, and an EPIRB. To starboard, a walk-behind bar hosts an Isotherm icemaker, a stainless steel bar sink, and four fixed bar stools with footrests, backed by three FRP cabinets forward of the bar for tidy stowage. Shade is provided by stainless steel awning poles with three removable triangle-shaped shade panels, and outdoor cooking is elevated by a TEC stainless steel grill with a cabinet below.

## Coach roof equipment

---

The coach roof is outfitted for serious cruising with two ACR searchlights and an electric trumpet horn mounted around a robust fiberglass radar mast that carries both a Furuno six-foot open-array radar antenna and Furuno three-foot open-array radar antennae, complemented by an Intellian SAT TV dome and a VF TracFone dome. Communications and navigation are further strengthened by two four-foot VHF antennas, two sixteen-foot VHF antennas, two cellular/Wi-Fi antennas, and two GPS sensors, while a Furuno wind sensor refines weather awareness. Safety and situational awareness are addressed with two Survitec/Zodiac eight-person canister life rafts, an aft-facing camera, and two flag halyards.

## Engine room

---

Immaculately organized and purpose-built, the engine room presents port engine hours of 3,574 and starboard engine hours of 3,574 and is driven by twin Caterpillar C-30 1,550 HP main engines mated to twin ZF model 1950 A

transmissions with a 2.448 to 1 reduction. A Naiad stabilizer system, model 302, with 9 sq. ft. fins and Multisea digital controls ensures confident passage-making, while a Headhunter Type II waste treatment system underscores blue-water readiness. Fire protection is robust with two Sea-Fire FM 200 fire suppression systems at 155 lb gross weight each. Fuel polishing and protection are equally comprehensive, featuring dual Racor 1000s for each engine with vacuum engine. The running gear includes 3.5 inch stainless steel prop shafts and four-blade Nibral 41.5 inch by 38 inch main propellers, complemented by a Naiad hydraulic 7 blade bow thruster in a 12 inch tube. Control and safety are enhanced by a Hynautic hydraulic steering system and stainless steel safety rails flanking each engine.

Systems support is extensive, with a Jabsco emergency bilge pump on the starboard engine featuring an electro clutch magneto; an Oberdorfer fuel transfer pump with two Racor 1000 filters; a Reverso six-point oil change system; and 220 volt ventilation blowers. Command is precise via Glendinning engine controls with two remotes. Hotel services include two stainless steel 40 gallon water heaters, two Racor 500 fuel filters for the generators, two coolant recovery bottles for the main engines, and two coolant recovery bottles for the generators. Redundancy and security are provided by six bilge pumps, four high water alarms, and eight multi-color underwater lights with a color wheel in the engine room. Illumination is bright and efficient with 110V fluorescent lighting, and monitoring is aided by an engine room CCTV camera.

Climate control is yacht-caliber with a chilled-water A/C system using four compressors delivering a total of 144,000 BTU: compressor one, a 60,000 BTU Danner Flow Marine unit (new 2023); compressor two, a 60,000 BTU Danner Flow Marine unit (new 2023); compressor three, a 60,000 BTU Dometic unit (new 2023); and compressor four, a 60,000 BTU Dometic unit (new 2023).

Practical touches abound, including a Husky mounted toolbox with 12 drawers, a sea chest between the engines, overhead rod storage for six rods, and two Sea Recovery 1200 GPD watermakers. An Airsep crankcase ventilation system

keeps the machinery breathing cleanly. Power take-offs include a PTO off the starboard transmission for the hydraulic system, and PTO off the starboard transmission for the hydraulic system. Fluid distribution is streamlined by a fuel manifold system, and auxiliary air is supplied by a Makita 1.8 HP household air compressor. Air quality is further refined by Vari speed engine room demisters.

Fuel tankage is intelligently distributed for balance and range, comprising two 336 gallon tanks outboard of the main engine, two 728 gallon tanks outboard of the main engine, one 497 gallon tank below the VIP sole, one 615 gallon tank below the Master sole, one 756 gallon tank below the Guest Companionway sole, and one 105 gallon tank in the center of the engine room, for a total of 3,429 gallons.

Recent exhaust upgrades by DeAngelo include new exhaust mixers and a new exhaust hard coat. A stainless steel swim ladder is securely stored in the engine room, underscoring the vessel's thoughtful, expedition-ready detailing.

## Electrical

---

A robust 12V/24V DC electrical system is complemented by a 115V/230V AC 60 Hz system, all confidently backed by twin 30kW Phasor generators, each in a sound shield—one to port showing 21 hours and one to starboard showing 23 hours, both new in 2024. Shore power is handled with authority by two Glendinning CM8 100 amp shore cord systems with one hundred-foot cords, two Maritime Marine transformers with boost function, and two 50 Amp shore power inlets at the transom, with a bonding system throughout for complete reliability. Charging is comprehensive, featuring a 12 Volt 25 amp Cristec battery charger for the generators, a 24 Volt 100 amp Dolphin Pro charger for the house batteries, and a 24 Volt 40 amp Dolphin charger dedicated to the windlass. Energy storage is equally well specified, with two 12V batteries forward for the windlass systems, two 12V batteries between the engines for

the generators, four 12 Volt 8D house batteries, and four 12 Volt 8D main engine batteries, all governed by five battery shutoff switches and a generator parallel switch for seamless redundancy.

Power distribution is intelligently organized in the engine room, where the AC panel features three digital volt/amp meters, an AC power management system, twenty-three 230 volt breaker-protected circuits, and twenty 115 volt breaker-protected circuits. The engine room DC volt meter includes an eight-position digital switch, and distribution is safeguarded by three 250 Amp DC main breakers and a 24 volt DC panel offering twenty breaker-protected circuits. In the pilothouse, the panel delivers twenty-four 24V breaker-protected circuits and thirteen 12V breaker-protected circuits, supported by a digital 12 volt/amp voltmeter and a digital 24 volt/amp voltmeter for precise monitoring. The crew panel adds an AC 230V digital volt/amp meter and an AC 115V digital volt/amp meter, fifteen breaker-protected 230 volt circuits, thirty-two breaker-protected 115 volt circuits, a DC 24 digital volt/amp meter, twenty 24 Volt breaker-protected circuits, and four shower sump breakers, with a Headhunter Tank Sentry overseeing the waste tank for confident, at-a-glance status.

## **Recent upgrades to "OSSUM DREAM"**

---

A comprehensive program of enhancements ensures "OSSUM DREAM" is turnkey and meticulously updated. In 2024, two new 30 kW Phasor generators were installed, complemented by four new 60,000 BTU chillers fitted in June 2023 to deliver powerful, efficient climate control. The main deck flooring was refreshed with laminate in February 2023, and new engine start batteries were added in April 2022. Both watermakers were overhauled with new membranes in May 2022. Earlier refinements include new teak laid on the swim platform in December 2018, the upgrade of the 24 V engine-room fans to 110 V in January 2017, a remodeled galley with new appliances and countertops in January

2016, an anchor windlass overhaul in February 2016, and a tender davit overhaul in August 2016.

## Exclusions

---

While every effort has been made to present a comprehensive inventory of all pertinent equipment included aboard OSSUM DREAM, some personal belongings remain on board. Prospective purchasers should assume that any item not specifically referenced herein will not convey at closing, including all original artwork and sculptures currently displayed on the yacht, together with all personal items.

## Disclaimer

---

The company presents the details of this vessel in good faith but makes no guarantee or warranty as to the accuracy of the information provided, nor any warranty regarding the vessel's condition. Prospective buyers should instruct their agents or surveyors to verify any particulars they consider essential. This vessel is offered subject to prior sale, price change, or withdrawal without notice.

## Tender

---

This 2005 15-foot Nautica RIB is powered by a 100 HP Yamaha outboard and steered from a centered helm, with guidance and engine readouts from a Ritchie compass, fuel gauge, Faria digital depth, and an analog tachometer. Practical deck appointments include a bow FRP step with folding cleat and two midship FRP steps with folding cleats, complemented by a bow seat, a seat in front of the console, and a bench seat aft of the console for versatile comfort. Communication and control are ensured by an Icom M412 VHF, six weather

proof switches, a Yamaha key switch, Lenco trim tabs, a horn, and LED low level lighting. A full blue Sunbrella boat cover completes the package, preserving the tender in style.

## Remarks

---

The 96' 2005 Hargrave Capri Skylounge "OSSUM DREAM" is priced decisively for a timely sale, positioning her as a compelling value within the Hargrave 96' market. Major recent upgrades—including new 30 kW generators (2024), a new A/C plant, overhauled watermakers, updated flooring, a teak swim platform, and a remodeled galley—represent a substantial investment already completed for the next owner. Her layout is tailored for effortless cruising and gracious entertaining, featuring a country-kitchen galley, a spacious salon, an enclosed skylounge, four ensuite staterooms, and crew accommodations for three to four. Supported by ongoing mechanical care, she presents as a thoroughly prepared yacht offered at a very competitive number. With an out-of-town owner not utilizing the yacht to her potential, the price has been reduced accordingly, creating a strong opportunity well worth inspection.

# CONTACTS

---

Shestakov Yacht Sales is a brokerage company specializing in the sale and service of yachts worldwide. The company offers services for buying and selling both new and used motor yachts, sailing vessels, and luxury superyachts. They also provide yacht registration, insurance, technical maintenance, crew selection, and charter organization services across the U.S., Canada, Latin America, the Caribbean, and the Bahamas.

The founder and lead broker of the company is Andrey Shestakov, a licensed and certified expert with extensive experience in marine engineering and shipbuilding.

The company has an extensive network of partnerships with major yacht manufacturers worldwide and provides services in multiple languages, including Russian, Ukrainian, Spanish, and English. The office is in Dania Beach, Florida, USA.

For more information and to view available yachts, you can visit the company's official website: <https://shestakovyachtsales.com>

## Contact details

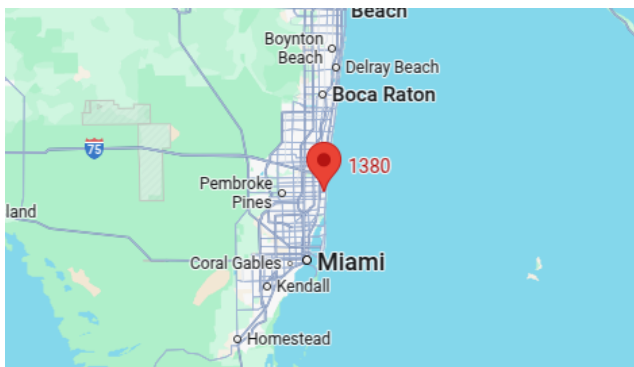
---

**Phone:** +1(954)274-4435

**Email:** [andrey@shestakovyachtsales.com](mailto:andrey@shestakovyachtsales.com)

## Address

---



1380 Weeping Willow Way, Hollywood,  
Florida 33019