



JASMINA III - ARK YACHT



Builder: [ARK YACHT](#)

LOA: 100' 0" (30.60 m)

Year Built: 2022

Beam: 25' 0" (7.70 m)

Model: N/A

Max Draft: 12' 2" (3.70 m)

Price: \$2,341,549.29 USD Subject to change.

Cruising Speed: 10 Knots (11.51 MPH)

[See full listing on our website](#)

Location: Didim, Turkey

Max Speed: 12 Knots (13.81 MPH)

If you would like to buy a yacht **JASMINA III - ARK YACHT** or would like help answering any questions concerning purchasing, selling, or chartering a yacht, please call **+1(954)274-4435** or click here on <https://shestakovyachtsales.com>

TABLE OF CONTENTS

OVERVIEW	3
SPECIFICATIONS	4
Basic Information	4
Dimensions	4
Speed, Capacities and Weight	5
Hull and Deck Information	5
Engine Information	5
GALLERY	6
DETAILED DESCRIPTION	12
CONTACTS	19

OVERVIEW

Jasmina III presents herself as a refined 30.6-meter luxury sailing yacht, launched in 2022 and classed by RINA, the work of Ark Yachts with an interior conceived by Timothy Saunders Yacht Design. This elegant mono-hull marries a strong steel hull with an aluminum superstructure, offering both resilience and graceful lines; her 7.7-meter beam and 3.7-meter maximum draft underpin a steady, reassuring seakeeping. Propulsion is provided by a single John Deere engine, delivering a top speed of 12 knots and an economical cruising pace of 9 knots, while maneuverability is enhanced by hydraulic bow and stern thrusters.

Comfort and safety are presented in equal measure: she sleeps up to 8 guests across 3 double cabins and 1 twin cabin, supported by a professional crew of 4, and is fitted with interconnected bilge and fire-fighting systems for operational security. Currently berthed in Didim, Turkey, Jasmina III is offered for EUR 2,950,000, excluding VAT — an opportunity to acquire a yacht that harmonizes luxury and performance in one superb package.

SPECIFICATIONS

Basic Information

Category:
Sail yachts

Year Built:
2022

Sub category:
Sloops for Sale

Country:
Turkey

Model Year:
2022

Dimensions

LOA:
100' 0" (30.60 m)

Max Draft:
12' 2" (3.70 m)

Beam:
25' 0" (7.70 m)

Speed, Capacities and Weight

Cruise Speed:

10 Knots (11.51 MPH)

Water Capacity:

766.1 Gallons

Max Speed:

12 Knots (13.81 MPH)

Fuel Capacity:

2377.55 Gallons

Gross Tonnage:

170 Pounds

Hull and Deck Information

Hull Material:

Steel Yachts

Hull Designer:

N/A

Deck Material:

Steel

Interior Designer:

Timothy Saunders Yacht Design

Hull Configuration:

N/A

Engine Information

Engines:

1

Manufacturer:

John Deere

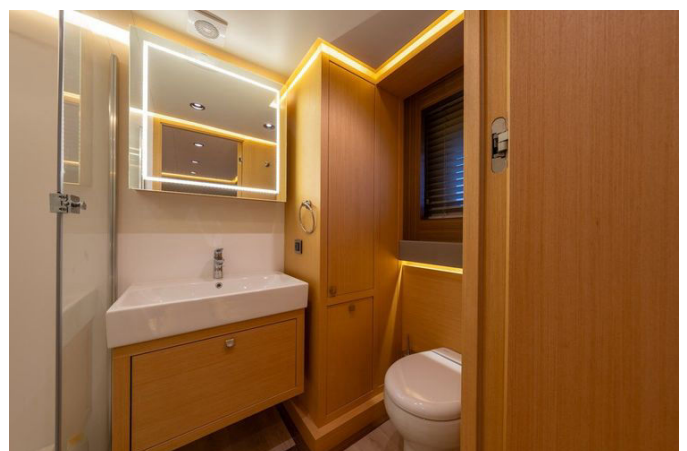
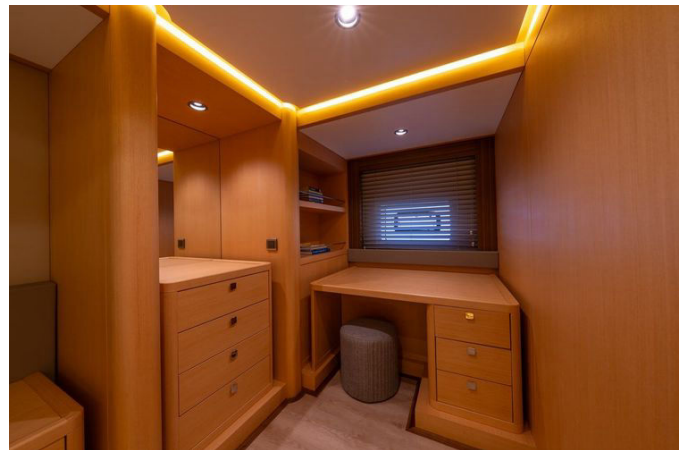
GALLERY

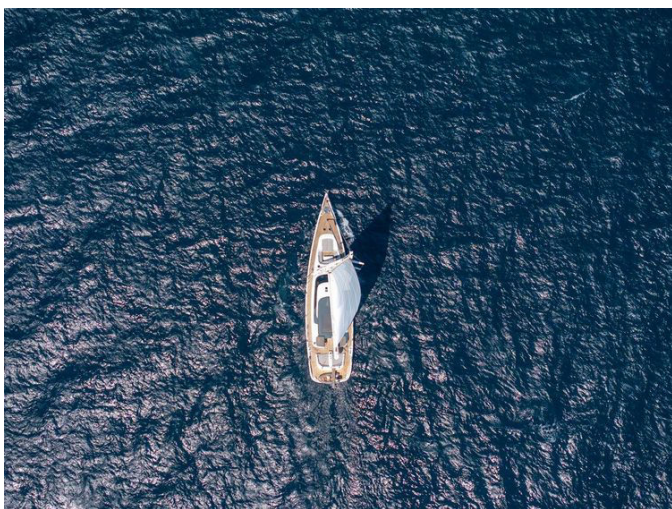












DETAILED DESCRIPTION

Machinery

This yacht is propelled by a robust John Deere JD 6135SFM85 engine producing a commanding 485 kW at 2100 rpm, an installation that combines strength with refined engineering to deliver confident performance on every passage; the engine has been meticulously maintained and has logged only 503 hours, a testament to its excellent condition and long-term reliability. Power is transmitted through a ZF 360 gearbox with a 2.917:1 ratio, optimising propulsion efficiency and responsiveness, while a single feathering propeller enhances manoeuvrability and top speed without compromising fuel economy. Although stabilisers are not fitted, the yacht benefits from both bow and stern thrusters which, together with the feathering propeller, provide exceptional control in tight harbours and during intricate docking operations, ensuring smooth, assured handling for experienced skippers and newcomers alike.

Generators & auxiliary systems

The electrical backbone of the yacht is anchored by a dependable Onan MDKDR generator delivering 17.5 kW at 12V in a 1-230-50 configuration, a unit that has recorded just 383 hours and stands ready to support extensive electrical demands; AC power is supplied via shore connection and the generator, while a comprehensive DC network is maintained by a carefully specified battery bank. Bosch service batteries of 150 Ah each are installed in the engine room in a bank of ten units, ensuring sustained house power, supported by two emergency batteries of 150 Ah located in the utility space for standby resilience. Engine start is secured by two main start batteries rated at 180 Ah in the engine room and the generator is served by a dedicated 90 Ah

start battery also in the engine room, while the stern thruster draws from two 180 Ah batteries conveniently positioned under the master cabin berth. Power management is handled by two battery charger/inverters for the service batteries in the engine room, each rated 24V 70 Amp/3000 VA, providing robust charging and inverter capacity. Comfort systems are comprehensive, with a MarineCool air conditioning installation in the engine room and independently controllable units serving all six cabins, the galley and the saloon to maintain a pleasant onboard climate in all conditions.

Tank capacities

Fresh water autonomy is assured by an Aquaprime watermaker that delivers dependable potable water production for extended cruising, while waste management is supported by a substantial combined grey and black water capacity totalling 3200 litres, providing generous buffer for long passages. The engine room bilge is fitted with two Raymarine transducers to enhance monitoring and situational awareness below the waterline, and the fire and bilge arrangements are intelligently interlinked with separate pumps that serve as mutual backups to one another for added redundancy. The yacht is subdivided into three fully watertight compartments—aft, engine room and forward—each equipped with a main bilge suction and with the engine room benefiting from two suctions for increased pumping efficiency; all bilge suctions converge on a main bilge collector in the engine room, allowing bilge water to be effectively removed from any compartment via the bilge pump, thereby maintaining safety and operability under varied conditions.

Ancillary equipment

This yacht is outfitted with premium ONESAILS sails that combine cutting-edge materials and expert craftsmanship to deliver performance and durability, the

mainsail woven from Hydranet (Dyneema) in a triradial cut with a luff of 32 metres, a leech of 34 metres and a foot of 12 metres, covering an expansive 250 square metres to drive the yacht with authority. The genoa, produced in Dacron with a crosscut construction, features a luff of 36 metres, a leech of 32.5 metres and a foot of 15.5 metres for a sail area of 252 square metres, while the staysail with a luff of 25.5 metres, a leech of 23.5 metres and a foot of 7.5 metres provides 82 square metres of versatile sail plan. Mast and boom spars are built in aluminium to strike the ideal balance between strength and lightness, enhancing responsiveness and overall sailing capability so that the yacht remains robust and exhilarating under sail.

Safety & fire protection

Safety is a core priority aboard this yacht, evidenced by a comprehensive suite of lifesaving and fire protection systems that deliver complete peace of mind; a life raft certified for up to ten people provides emergency evacuation capability, while a full fire and smoke detection system monitors the vessel continuously. The engine room is protected by an automatic foam fire extinguishing system that can be actuated from outside the engine room for rapid, safe response, and traditional portable fire extinguishers are strategically placed in every cabin to ensure immediate access throughout the vessel. Together these systems form a robust safety architecture that safeguards guests and crew and underlines the yacht's commitment to preparedness and resilience at sea.

Communication equipment

The yacht's communication fit-out is built around reliable Raymarine systems that ensure clear, consistent connectivity on passage; a Raymarine radio delivers long-range communication capabilities with exceptional clarity, while a

Raymarine VHF system provides robust short-range voice communications essential for bridge-to-bridge and harbour operations. These integrated systems ensure that the vessel remains in constant contact with shore, other vessels and authorities, supporting operational coordination, safety and weather-update reception so the skipper and crew can navigate with confidence.

Navigation equipment

Navigation is orchestrated through a sophisticated Raymarine suite centred on an Axiom chart plotter as the master unit, complemented by a secondary display on the bridge to provide seamless access to charts and navigational data; an integrated alarm monitoring display keeps the crew immediately aware of critical conditions while the Raymarine multifunction display offers versatile data presentation. Centralised control is provided by a Delta panel with a large VDU, alongside dedicated control panels for the generator, the main hydraulic system and the bow thruster to simplify systems management. The main engine control panel and steering gear control unit with joystick afford precise handling and intuitive manoeuvring, with an electronic throttle for refined speed control. Anchor operations are made straightforward via a windlass control button together with port and starboard anchor buttons, and additional deck controls for horn, bow deck lights, spreader lights and instrument lights ensure comprehensive, ergonomic command of navigation and vessel functions from the helm.

Deck equipment

The deck layout has been conceived to combine practicality and leisure, featuring two stern passerelles that provide convenient access from the quay to the upper deck and to the lower stern platform respectively, making

boarding and disembarkation effortless. A versatile swim platform at the stern can be lowered into the water to create a welcoming sea-level area for bathing and water sports, while the cockpit benefits from a retractable sunshade that offers comfortable shaded living space on warm days. For alfresco dining and socialising the pushpit-mounted BBQ provides a convivial focal point, and altogether the deck equipment enhances the yacht's usability and the pleasure of life aboard, whether entertaining guests or enjoying quiet moments at anchor.

Audio & visual equipment

Entertainment aboard is thoughtfully arranged to serve both crew and guests, with a TV in the crew mess offering multiple plug-in options to accommodate a variety of media sources and ensure comfortable downtime, and the option to fit a VHF antenna on the mast to enable satellite TV reception for expanded viewing choices. The salon is equipped with stereo speakers to deliver high-quality audio and create an immersive listening environment, so that on-board entertainment complements the vessel's overall comfort and convivial atmosphere.

Galley & domestic equipment

The galley is specified with high-quality Siemens appliances to support refined onboard dining, anchored by a large fridge and a separate freezer that together provide significant cold storage capacity, complemented by a second fridge in the cockpit for immediate access to refreshments while enjoying outside spaces. Cooking facilities include an oven and a hob that allow for the preparation of a full range of dishes, and a microwave powered from the service batteries adds flexible convenience by operating independently of shore power or the generator. This well-appointed domestic fit-out ensures

practical, reliable culinary performance so life on board is as comfortable and effortless as it is pleasurable.

Tenders & watersport equipment

The yacht's water leisure package is crafted to broaden possibilities for exploration and fun, centred on a four-seater tender powered by a dependable Suzuki outboard engine that provides swift and reliable access to shore and quiet anchorages. For gentle recreation there are two paddle boards that invite relaxed exploration of calm bays, waterskis for guests seeking thrills and a diving set intended for hull inspections and underwater maintenance when required. Together this selection of tenders and watersport equipment ensures every voyage can include both tranquil moments and spirited activity, enhancing the enjoyment of time on the water.

Accommodations

Accommodation aboard is arranged to provide sumptuous comfort and privacy, centred on a magnificent full beam Owner's Suite that occupies the yacht's beam and includes a private ensuite bathroom to create an expansive personal retreat. Guests are accommodated in two elegant Double VIP cabins, each with its own ensuite bathroom, ensuring high levels of comfort and autonomy, while an additional Twin cabin with ensuite offers flexible sleeping arrangements for family or crew. The layout thoughtfully balances generosity of space with privacy and functionality so that every overnight aboard feels both luxurious and intimate.

Refit 2025

During the winter 2025 refit, Jasmina III received comprehensive attention both

above and below the waterline to ensure she is immaculate and mechanically robust for the season ahead. Dry dock works included a full overhaul of the bow and stern thruster propellers with removal, cleaning and replacement to restore peak efficiency, while the folding propeller was taken to the workshop for complete maintenance including re-greasing. Deck attention encompassed a new sealant for the cockpit fridge, laundering of all deck cushion covers, meticulous washing and polishing of every stainless steel item and sanding and polishing of the anchor plates, with windlass maintenance performed to guarantee reliable anchoring. The watermaker was winterised in October 2024 and prepared for de-winterising in May 2025. Sail care included sending the mainsail to the loft for washing and repair of luff wear before reinstallation. Below the waterline the hull underwent full cleaning, sanding, priming and was treated with a double coat of antifouling, sea cocks and seawater intake filters were cleaned and serviced and new anodes fitted. Topsides were sanded, primed, touch-up painted and polished to maintain a pristine finish. Mechanical maintenance covered annual servicing of the tender outboard, the main engine and the generator, while a biennial chemical treatment and cleaning of the air conditioning system and all fan coil units was completed to ensure optimal comfort. This meticulous refit leaves Jasmina III visually immaculate and mechanically sound, ready to deliver an exceptional sailing season.

CONTACTS

Shestakov Yacht Sales is a brokerage company specializing in the sale and service of yachts worldwide. The company offers services for buying and selling both new and used motor yachts, sailing vessels, and luxury superyachts. They also provide yacht registration, insurance, technical maintenance, crew selection, and charter organization services across the U.S., Canada, Latin America, the Caribbean, and the Bahamas.

The founder and lead broker of the company is Andrey Shestakov, a licensed and certified expert with extensive experience in marine engineering and shipbuilding.

The company has an extensive network of partnerships with major yacht manufacturers worldwide and provides services in multiple languages, including Russian, Ukrainian, Spanish, and English. The office is in Dania Beach, Florida, USA.

For more information and to view available yachts, you can visit the company's official website: <https://shestakovyachtsales.com>

Contact details

Phone: +1(954)274-4435

Email: andrey@shestakovyachtsales.com

Address



1380 Weeping Willow Way, Hollywood,
Florida 33019