



SHESTAKOV

Yacht Sales

CEFEA - SOLARIS YACHTS



Builder: [SOLARIS YACHTS](#)

LOA: 111' 0" (33.83 m)

Year Built: 2020

Beam: 26' 0" (7.90 m)

Model: Solaris 111

Max Draft: 65' 2" (19.85 m)

Price: \$23,855,503.8 USD Subject to change.

Cruising Speed: 10.50 Knots (12.08 MPH)

[See full listing on our website](#)

Location: Cogolin, France

Max Speed: 13 Knots (14.96 MPH)

If you would like to buy a yacht **CEFEA - SOLARIS YACHTS** or would like help answering any questions concerning purchasing, selling, or chartering a yacht, please call **+1(954)274-4435** or click here on <https://shestakovyachtsales.com>

TABLE OF CONTENTS

OVERVIEW	3
SPECIFICATIONS	4
Basic Information	4
Dimensions	4
Speed, Capacities and Weight	4
Hull and Deck Information	5
Engine Information	5
GALLERY	6
DETAILED DESCRIPTION	12
CONTACTS	14

OVERVIEW

Cefea is a 33.77-meter Solaris sailing superyacht that marries spirited sailing capability with sumptuous comfort and a relaxed Mediterranean Riviera aesthetic. Conceived by Monaco Yacht Temptation with interior styling by Boutsen Design, she has been engineered for effortless passagemaking and days spent exploring sun-drenched coastlines. Her hull and structure make use of carbon fiber and advanced composites, giving Cefea a responsive, refined character under sail, while broad teak decks create generous outdoor living areas perfect for coastal cruising, anchoring in secluded coves, island-hopping or enjoying dinner with the sea on the horizon. The interior is calm and contemporary, offering four exquisitely finished guest staterooms and welcoming lounges arranged for intimate family retreats or elegant entertaining. Attended by a professional crew of five who manage every operation with discretion, guests are free to relax and immerse themselves in the experience. Combining graceful lines, true performance and understated luxury, Cefea answers the expectations of owners and discerning guests who seek the very best of modern yachting.

SPECIFICATIONS

Basic Information

Model Year:
2020

Country:
France

Year Built:
2020

Dimensions

LOA:
111' 0" (33.83 m)

Max Draft:
65' 2" (19.85 m)

Beam:
26' 0" (7.90 m)

Speed, Capacities and Weight

Cruise Speed:
10.50 Knots (12.08 MPH)

Water Capacity:
449.09 Gallons

Max Speed:
13 Knots (14.96 MPH)

Fuel Capacity:
1154.43 Gallons

Gross Tonnage:
133 Pounds

Hull and Deck Information

Hull Material:

Fiberglass and Plastic Yachts

Hull Designer:

N/A

Deck Material:

Carbon Fiber

Interior Designer:

N/A

Hull Configuration:

N/A

Engine Information

Engines:

1

Engine Type:

Inboard

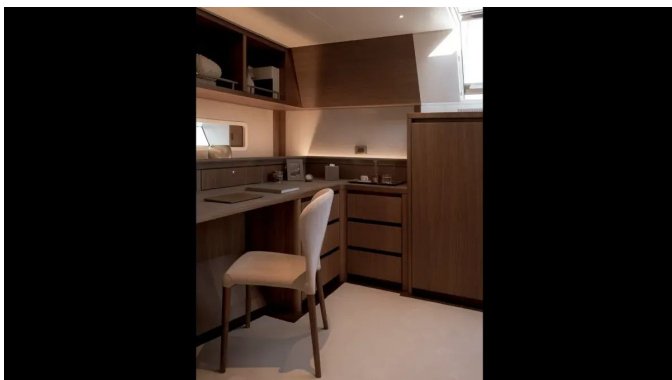
Manufacturer:

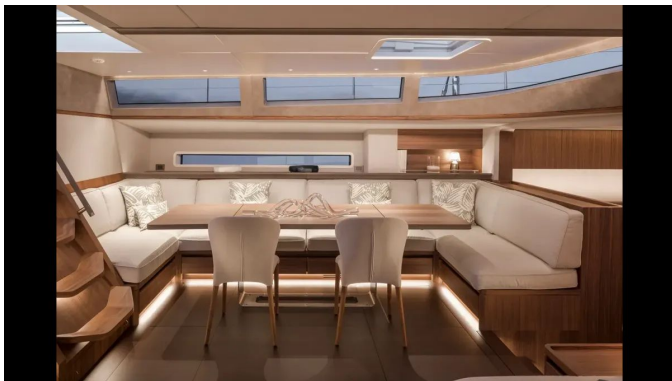
Cummins

Fuel Type:

Diesel

GALLERY

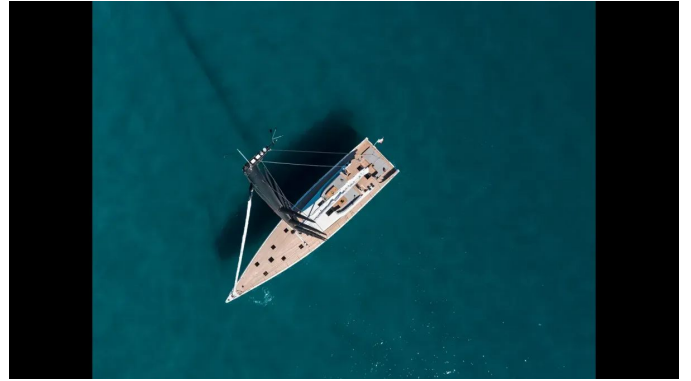












DETAILED DESCRIPTION

Equipment

Propulsion is entrusted to a single diesel CUMMINS QSB 6.7 engine, a six cylinder unit with direct injection, turbocharging and after cooling that delivers 425 hp at a rated speed of 3000 rpm and a total displacement of 6,7 liters; starting is handled by a 24 V DC electric starter and at rated power the engine consumes 82.2 liters/h while turning a Bruntons Propeller Varifold with four blades. The yacht's power architecture supplies 400 V 50 Hz AC three phase and 230 V 50 Hz AC single phase for the primary electrical distribution, with a 24 V DC network reserved for secondary services, lighting and emergency lighting, electronics and alarms. Onboard generation is provided by a Northern Lights 32 kW unit (230/400 V, mono phase and neutral, 50 Hz) fitted with a PTO for the hydraulic system, with a Paguro emergency generator rated 18 kW 10Hr as backup, and shore connection is through a single 63 amp nominal 380 VAC three phase inlet. Energy storage is configured across multiple 24 V banks: a 140 Ah battery for main engine starting (group a), a 140 Ah battery for generator starting (group b), a 1440 Ah service battery bank (group c), a 540 Ah lighting bank (group d) and a 200 Ah battery dedicated to electronics and the RTF station (group e), with parallel linkages between groups a and b and between groups c and d.

The rig is an all carbon Southern Spar mast standing on ECsix rigging, and the mast received an Awlgrip repaint this winter. The principal sails are exceptionally current: the mainsail, jib and staysail are new from 2025 and were commissioned from North Sails, while the Code 0 was supplied by Doyle Sailmakers in 2024. During the 2025 RINA five year inspection and survey, all standing rigging and much of the major deck equipment underwent comprehensive overhaul and inspection, ensuring the running and standing

hardware is in prime condition.

A sophisticated electrical and navigation fitout supports safe and luxurious passagemaking: three 100 Ah chargers service groups c, d and e, while a 50 Ah charger attends groups a and b; two inverters, each 2,5 kW max (1,8 kW continuous sinusoidal), are installed—one dedicated to the electronic systems and the other to the galley and general sockets. Redundancy and precision steering are provided by two magnetic compasses at the steering pedestal and a full B&G H5000 integrated suite that combines wind, depth, log, compass and autopilot functions via an HERCULES processor, five 30/30 displays, eight GFD screens (four exposed on deck and four within the interior), a Zeus 16 display with keyboard, a Furuno commercial display, and the related sensors and controllers including a T&T SatPhone, Sailor VHF commercial radio, speed and depth/temp sensors, masthead wind sensor, motion and compass sensors, GPS, radar and an autopilot computer and controller display.

Communications and connectivity are comprehensive and modern, with a VHF featuring DSC and a cockpit outlet, an AIS transponder, two portable VHF GMDSS units, a 4G/HSDPA deck antenna, an RX/TX deck Wi-Fi antenna and an onboard Wi-Fi network, plus a Starlink antenna for global broadband and a fog horn for close-quarters signalling.

CONTACTS

Shestakov Yacht Sales is a brokerage company specializing in the sale and service of yachts worldwide. The company offers services for buying and selling both new and used motor yachts, sailing vessels, and luxury superyachts. They also provide yacht registration, insurance, technical maintenance, crew selection, and charter organization services across the U.S., Canada, Latin America, the Caribbean, and the Bahamas.

The founder and lead broker of the company is Andrey Shestakov, a licensed and certified expert with extensive experience in marine engineering and shipbuilding.

The company has an extensive network of partnerships with major yacht manufacturers worldwide and provides services in multiple languages, including Russian, Ukrainian, Spanish, and English. The office is in Dania Beach, Florida, USA.

For more information and to view available yachts, you can visit the company's official website: <https://shestakovyachtsales.com>

Contact details

Phone: +1(954)274-4435

Email: andrey@shestakovyachtsales.com

Address



1380 Weeping Willow Way, Hollywood,
Florida 33019