



SHESTAKOV

Yacht Sales

IN LOVE - SU MARINE



Builder: [SU MARINE](#)

LOA: 116' 0" (35.58 m)

Year Built: 2014

Beam: 24' 0" (7.30 m)

Model: Schooner

Max Draft: 38' 9" (11.81 m)

Price: \$5,565,525.54 USD Subject to change.

Cruising Speed: 10 Knots (11.51 MPH)

[See full listing on our website](#)

Location: Bodrum, Turkey

Max Speed: 12 Knots (13.81 MPH)

If you would like to buy a yacht **IN LOVE - SU MARINE** or would like help answering any questions concerning purchasing, selling, or chartering a yacht, please call **+1(954)274-4435** or click here on <https://shestakovyachtsales.com>

TABLE OF CONTENTS

OVERVIEW	3
SPECIFICATIONS	4
Basic Information	4
Dimensions	4
Speed, Capacities and Weight	4
Accommodations	5
Hull and Deck Information	5
Engine Information	5
GALLERY	6
DETAILED DESCRIPTION	12
CONTACTS	18

OVERVIEW

S/Y IN LOVE is a 35.6-meter bespoke luxury sailing yacht launched by Su Marine Shipyard in 2014, where traditional boatbuilding craftsmanship is married to modern performance. Conceived by Tanju Kalaycioğlu with serene, elegant interiors by Jean Guy Vergès, she projects an air of timeless refinement and discreet comfort. Built using advanced cold molded epoxy and laminated in Iroko and mahogany, IN LOVE offers remarkable stiffness and structural strength while retaining the warm, tactile character of classic materials. Her fine hull lines and an assertive sail plan create an involving performance cruising experience, supported by dependable propulsion that sustains a 12 knot cruising speed. She accommodates 8–9 guests in four beautifully finished cabins, anchored by a forward master suite, and is served by a professional crew of six who provide seamless, unobtrusive service. Expansive deck areas and carefully considered interiors make her equally suited to private bluewater voyaging or a distinguished charter program, presenting a rare opportunity to own a pedigree sailing superyacht rich in character and proven seakeeping.

SPECIFICATIONS

Basic Information

Model Year:
2014

Country:
Turkey

Year Built:
2014

Dimensions

LOA:
116' 0" (35.58 m)

Max Draft:
38' 9" (11.81 m)

Beam:
24' 0" (7.30 m)

Speed, Capacities and Weight

Cruise Speed:
10 Knots (11.51 MPH)

Water Capacity:
792.52 Gallons

Max Speed:
12 Knots (13.81 MPH)

Fuel Capacity:
1849.2 Gallons

Gross Tonnage:
123 Pounds

Accommodations

Crew Cabin:

3

Hull and Deck Information

Hull Material:

Cold Molded

Hull Designer:

Taka Yachts Tanju Kalaycioglu

Deck Material:

Cold Molded

Interior Designer:

J G Verges

Hull Configuration:

N/A

Engine Information

Engines:

1

Engine Type:

Inboard

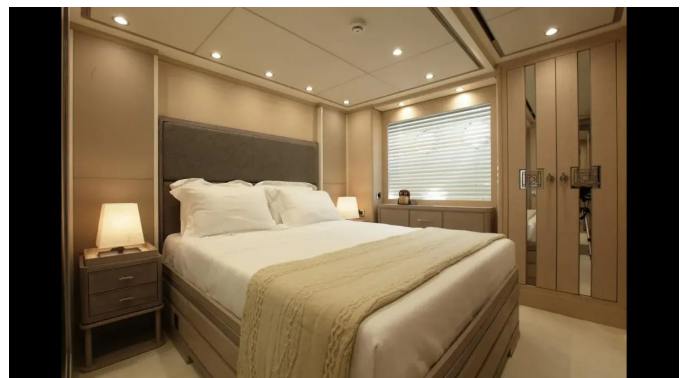
Manufacturer:

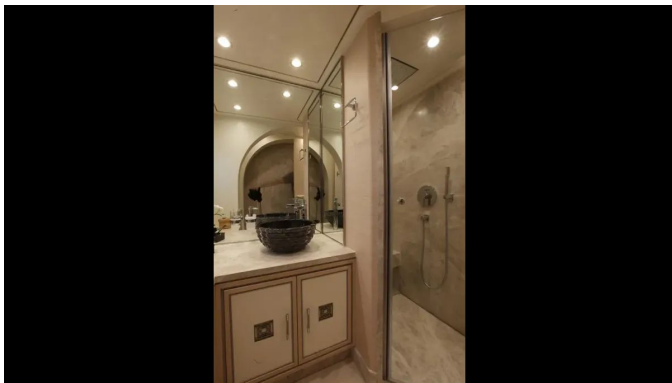
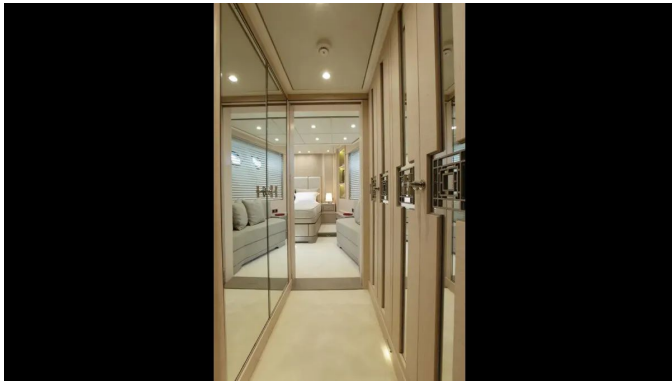
Scania

Fuel Type:

Diesel

GALLERY













DETAILED DESCRIPTION

Accommodations

Configured to prioritize seclusion and refined comfort, the owner's master cabin is situated forward while three elegantly appointed guest cabins provide gracious quarters for family and visitors. Professional operations are supported by dedicated crew accommodation, comprising one captain's cabin and two crew cabins positioned on the fore side to ensure discreet, efficient service.

Navigation equipment

A refined ensemble of navigation systems greets the helmsman: twin 12-inch B&G Zeus displays flank two 8-inch B&G panels to provide sharp, redundant situational awareness. Long-range detection is handled by a Furuno FAR-15x8 radar, while precise wind information is supplied by the SIMRAD B&G 508 wind vane. Depth is monitored by a Triton B&G Systems depth sounder and heading control is maintained by a Triton B&G Systems autopilot. AIS functionality for vessel identification and traffic management is delivered by a Furuno FA170 working in concert with a SIMRAD GS15, creating a thoroughly integrated navigation suite.

Galley & laundry equipment

Created to support refined entertaining and seamless service, the galley is appointed with a Miele H7890BP oven, a Sub Zero BI48SD refrigerator and a Liebherr SGNes 4375 freezer, while a Bosch Serie 6 dishwasher ensures discreet cleanup. A Jura E8 coffee machine provides barista quality beverages from first light espressos to late evening drinks. Laundry duties are handled

with equal attention to detail by a Bosch WAY4M40TR washer and dryer in White, offering an 8 kg capacity to keep linens and garments immaculate without compromise.

Communications equipment

A sophisticated communications ensemble ensures uninterrupted connectivity at sea and ashore, with an Intellian FB150 satellite phone forming the principal link for dependable data and voice services, complemented by a NAW 333 Navtex receiver to capture essential maritime safety broadcasts and a Sailor 6222 VHF A Class set that guarantees clear ship to ship and ship to shore communications. Shoreside access is further strengthened by a Ubiquiti Wi-Fi catcher, while a Ponything Antennas GSM aerial provides consistent mobile reception. Internal telephony is managed by an LG Ericsson Aria Soho IP Exchange housed in the crew mess, distributing service to five Siemens SL400 cordless handsets positioned for the saloon and guest cabins, five Gigaset DA210 wall-mounted phones throughout crew areas and the galley, and a central LG LIP 7008D unit in the crew mess.

Entertainment equipment

Onboard entertainment centers on Sony televisions paired with Bose audio equipment, complemented by traditional light-management controls to create the desired ambiance. The main salon is furnished with both video and sound systems, and that same provision extends to the master stateroom, the VIP stateroom and every guest stateroom, delivering consistent AV functionality throughout the accommodation areas. Outside, dedicated audio installations serve the exterior social spaces, notably the aft deck, while the wheelhouse is also fitted with its own audio system for open-air enjoyment and operational use.

Tender

A refined 4.95-meter Brig tender, equipped with a 100 HP Yamaha outboard currently showing 3,766 hours, offers steadfast reliability and nimble handling to ensure seamless guest transfers and effortless coastal exploration.

Safety & security equipment

For absolute peace of mind at sea the yacht is fitted with a comprehensive suite of life-saving and distress systems. Two Viking RescYou Pro life rafts, SOLAS-approved and equipped with hydrostatic release mechanisms, each accommodate up to eight persons, while fire protection is provided by six Kidde Pro Series extinguishers — 5 kg CO₂ and dry powder units — discreetly positioned in the engine room, galley and cabins. Long-range alerting is assured by a single ACR GlobalFix V4 EPIRB with integrated GPS for precise location transmission, complemented by two MedAire Ship Kit first aid kits meeting maritime safety standards. Early detection is delivered by eight Kidde i9010 smoke detectors located throughout the cabins, saloon and engine room, and battery-operated emergency lighting illuminates the yacht in the event of power loss. Personal flotation is covered by twelve Baltic Pro Sailor 275N inflatable life jackets, each fitted with whistle and light, and man-overboard readiness includes two Dan Buoy inflatable rescue aids with automatic inflation. Visual distress signalling is reinforced with SOLAS-approved handheld and parachute flares, and a Jotron Tron SART20 Search and Rescue Transponder ensures reliable signalling to rescue units.

Sail & rigging

Designed to marry commanding performance with immaculate control, the yacht boasts a substantial sail wardrobe comprising a 174 square meter

mainsail, a 100.5 square meter mizzen, a 239 square meter foresail, a 122 square meter staysail and a sweeping 720 square meter spinnaker. The rig is centered on Dokar aluminium masts paired with matching Dokar aluminium booms, while both standing and running rigging are specified in Nitronics to ensure exceptional strength and reliability. Sail handling is made effortless by Harken Radial Electric winches, supported by Lewmar winches distributed throughout the vessel for exacting trim, and furling functions are entrusted to Bamar Gfl systems. The package is completed with premium Doyle sails, delivering a refined, performance oriented rig that reflects both luxury and technical precision.

Aft deck

Designed to deliver uncompromising control and reliability, the aft deck is fitted with a DATA DDS 1600 PS electro-hydraulic steering system functioning on 24 V/380 V, and a robust hydraulic windlass engineered to handle two 360 kg stainless steel anchors with ease. The ground tackle comprises 16 mm galvanized chain, with 160 m laid to port and 120 m to starboard for secure holding in diverse conditions, while onboard comfort is enhanced by Grohe Tempesta deck showers and airflow is maximized through purpose-built stainless steel cowlings over the air intakes. The exterior is elegantly finished in AWLGRIP Stark White and sealed with International and Glasurit varnish, interior coatings are executed in AWLGRIP with International varnish for lasting sheen, and the underwater hull is protected with International Micron Extra to ensure enduring performance.

Mechanical equipment

Propulsion is entrusted to a single Scania SCANIA D113 072M 02 21 engine producing 600 hp / 447 kW, driving a conventional shaft arrangement through

a Twindisc 5114 DC reduction gear with a 3.28:1 ratio for refined, efficient power delivery. Steering precision is provided by a DATA DDS 1600 PS electrohydraulic system operating on 24 V / 380 V, complemented by a Wesmar hydraulic bow thruster with a fixed pitch propeller for confident maneuvering in tight spaces; there is no stern thruster. The propulsive train features Bruntons mechanically folding Ni Br Al propellers mounted on twin stainless steel shafts, and helm feedback is supplied by a Hidromarine Rudder Angle Indicator to ensure exact course control.

Fuel treatment comprises two Racor 75900 30 mic. fuel filters dedicated to the main engine and two Separ SWK 2000 300 lph 30 mic fuel filters serving the generators, while no fuel oil separator or oil/water separator is installed. Freshwater autonomy is provided by an Idromar MSK 300 water maker rated at 300 lt/h, with hot water supplied by two 100 lt Diko electric boilers each fitted with independent circulation pumps. Essential safety and service equipment include two Gianneschi JET 518 fire bilge pumps rated at 15 cbm/hr and a diesel-driven emergency tire pump, a Gianneschi Group dirty oils pump (230/400V), HAMANN Super Mini Plus wastewater treatment, a Gianneschi MVI 80 grey water pump and a Gianneschi MVI 80 black water pump. Onboard sanitation is handled by a Tecma WC system running on 24 VDC. The hydraulic installation consists of two 380 V electrically controlled central power packs plus a PTO on the engine. Gangway and boarding are refined with an automated telescopic pasarelle rated to 150 kg and a manual boarding ladder. Climate control is delivered by a Climma CWS Modul 1202 with fancoils for each cabin and compartment, augmented by a Marincold Fresh Air Make Up Unit MCF/A 480 – 48.000 BTU to provide a constant supply of tempered, dehumidified air throughout the vessel.

Electricity

Power distribution is orchestrated from main switchboards for 380 VAC, 230

VAC and 24 VDC, all thoughtfully positioned in the engine room and arranged across twenty independent switchboard panels. The generators are configured to operate in parallel, with the flexibility to run in either automatic or manual mode, while shore power is tempered through a bespoke 37.5 kVA/30 kW transformer to ensure a stable, adaptable feed; an APC UPS rated at 6 kVA provides additional conditioned backup for critical loads.

The vessel's battery architecture is designed for resilience and redundancy: the service bank is made up of twelve Victron Energy 2 V batteries, each rated at 1500 Ah; the emergency system is supported by four 12 V batteries yielding a total of 220 V; communications are safeguarded by a single 12 V, 60 Ah VHF battery; engine starting is provided by two 12 V, 165 Ah batteries and generator starting by four 12 V, 90 Ah batteries. Charging and power management are entrusted to an intelligent array of chargers—Skyla 24/100A (1+1) for the service bank, Skyla 24/30 (1+1) for the engine batteries, Skyla 24/25 (2+1) for the generator batteries, Skyla 24/50 (1+1) for the emergency bank and a Bluepower 12/15 (1+1) for the VHF battery—while a Multiplus 24/3000 charger/inverter package paired with a Phoenix 24/3000 inverter guarantees extended autonomy and seamless DC/AC conversion.

CONTACTS

Shestakov Yacht Sales is a brokerage company specializing in the sale and service of yachts worldwide. The company offers services for buying and selling both new and used motor yachts, sailing vessels, and luxury superyachts. They also provide yacht registration, insurance, technical maintenance, crew selection, and charter organization services across the U.S., Canada, Latin America, the Caribbean, and the Bahamas.

The founder and lead broker of the company is Andrey Shestakov, a licensed and certified expert with extensive experience in marine engineering and shipbuilding.

The company has an extensive network of partnerships with major yacht manufacturers worldwide and provides services in multiple languages, including Russian, Ukrainian, Spanish, and English. The office is in Dania Beach, Florida, USA.

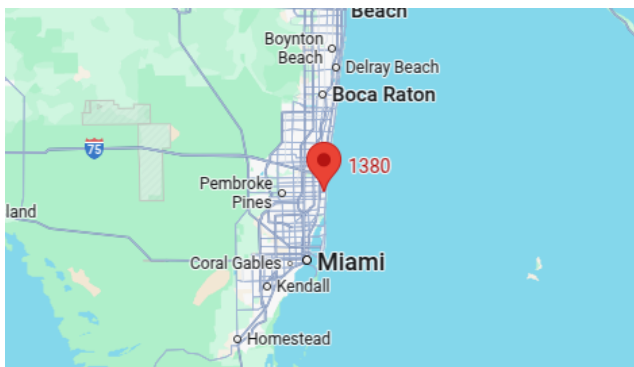
For more information and to view available yachts, you can visit the company's official website: <https://shestakovyachtsales.com>

Contact details

Phone: +1(954)274-4435

Email: andrey@shestakovyachtsales.com

Address



1380 Weeping Willow Way, Hollywood,
Florida 33019