

LE PIETRE - ADA YACHT WORKS



Builder: [ADA YACHT WORKS](#)

Beam: 26' 0" (8 m)

Year Built: 2009

Max Draft: 13' 3" (4.05 m)

Model: Custom Built Sailing Yacht

Cruising Speed: 10 Knots (11.51 MPH)

Price: \$5,274,076.15 USD Subject to change.

[See full listing on our website](#)

Location: Bodrum, Turkey

LOA: 128' 0" (39 m)

TABLE OF CONTENTS

OVERVIEW 3

SPECIFICATIONS 4

 Basic Information 4

 Dimensions 4

 Speed, Capacities and Weight 4

 Accommodations 4

 Hull and Deck Information 5

 Engine Information 5

GALLERY 6

DETAILED DESCRIPTION 13

CONTACTS 16

OVERVIEW

LE PIETRE is a 2009 custom luxury sailing superyacht built by ADA Yacht Works, conceived for confident bluewater passages and refined comfort. Measuring 39 m (127'11") with a draft of 11.4', she pairs Turkish artisanal detailing with modern wood epoxy construction to deliver a true motorsailer capable of either sailing or motoring, with a top speed of 12 knots and a comfortable cruising speed of 10 knots.

A full refit in 2024 introduced new teak decking, substantial enhancements in the engine room and a renewed RINA survey, and she has continued to receive seasonal maintenance through the 2025–2026 winter, presenting in meticulous condition and ready to cruise without delay.

The interior, by Hale Doke, marries practical layout with a warm, inviting ambiance; abundant windows and portholes fill the living areas with natural light. The main salon features a lounge to port and an eight guest dining table to starboard, with a TV and entertainment suite opposite, while the galley is comprehensively equipped and configured to suit both private family cruising and professional charter use.

Accommodation is arranged for up to eight guests in four en suite staterooms, including two master cabins, a VIP suite and a twin guest cabin, all appointed with elegance. Crew accommodation sleeps five to six in three cabins, with a separate captain's cabin for added privacy. Exterior living is equally considered, with a shaded aft dining area for eight and a generous foredeck lounge centered around a table ideal for group seating and alfresco entertaining.

SPECIFICATIONS

Basic Information

Model Year:
2009

Country:
Turkey

Year Built:
2009

Dimensions

LOA:
128' 0" (39 m)

Max Draft:
13' 3" (4.05 m)

Beam:
26' 0" (8 m)

Speed, Capacities and Weight

Cruise Speed:
10 Knots (11.51 MPH)

Water Capacity:
924.6 Gallons

Gross Tonnage:
183 Pounds

Fuel Capacity:
1386.9 Gallons

Accommodations

Crew Cabin:
3

Hull and Deck Information

Hull Material:
Wooden Yachts

Hull Designer:
N/A

Deck Material:
Wood Epoxy

Interior Designer:
Hale DOKE

Hull Configuration:
Monohull

Engine Information

Engines:
2

Engine Type:
Inboard

Manufacturer:
Cummins

Fuel Type:
Diesel

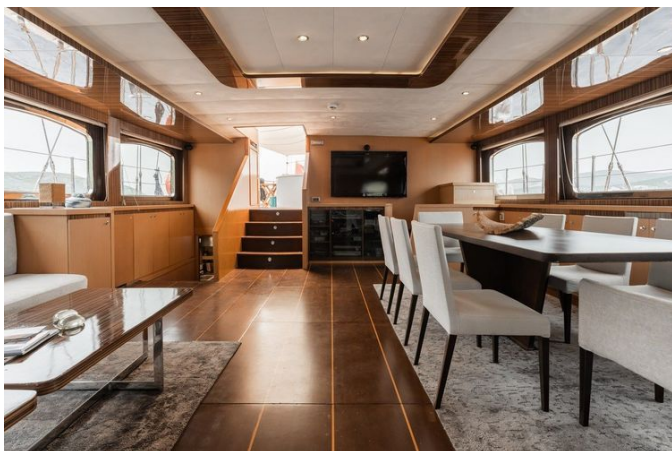
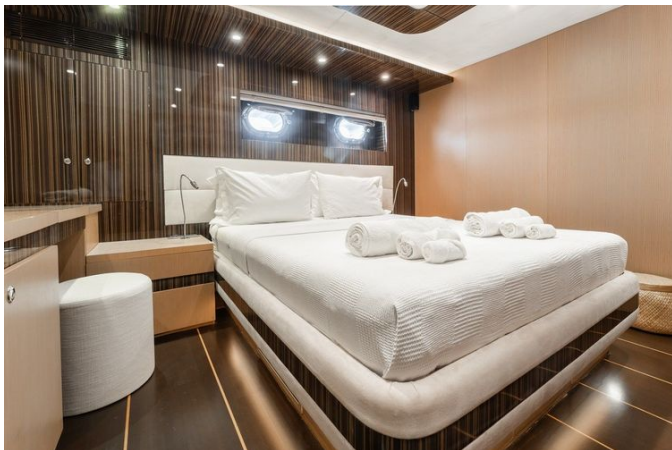
GALLERY















DETAILED DESCRIPTION

Le Pietre – Technical specifications

Built by Ada Yacht Works and launched in 2009, Le Pietre underwent an extensive refit in 2024 and presents an overall length of 39.0 metres (127 feet), an 8.0 metre beam and a draft varying between 3.45 and 4.05 metres. She displaces 183 GT and is constructed in Wood Epoxy with five ply laminated mahogany. Registered under the flag of Malta, Le Pietre is classed by RINA with Charter Class certification in force until May 2026.

Configured for long range cruising, she carries 5,250 litres of diesel, 3,500 litres of freshwater and 1,500 litres of black water capacity, offering an estimated range of approximately 850 nautical miles when steaming at economic speed. Cruising performance is deliberately measured and comfortable, with an economic speed of 8.5 knots, a typical cruising speed of 10 knots and a maximum speed of 12 knots.

Her propulsion package comprises twin Cummins QSM11 main engines each rated at 455 HP, driving through ZF gearboxes with a 4:1 ratio to twin screws. Current recorded hours are approximately 4,306 on the port engine and 4,515 on the starboard, turning four blade propellers of roughly 130 cm diameter mounted on 90 mm shafts. Onboard electrical generation is provided by two ONAN generators of 27 kW, showing around 3,965 hours, supplying a 380V / 220V / 24V electrical network with 380V shore power capability and a 24V battery system.

Hotel systems and safety equipment are substantial: manoeuvring is assisted by a bow thruster while no stern thruster or stabilizers are fitted; climate control is delivered via a Colmar 380V air conditioning system. Freshwater production is supported by Selmar and Sea Pressure water makers, each rated at 180 litres per hour, complemented by a Selmar waste treatment plant.

Fire fighting and safety systems include a 24V main engine fire suction pump and an engine room CO₂ suppression installation with a 50 litre bottle.

Navigation and communications are comprehensively equipped with a primary Raymarine radar capable to forty eight nautical miles and a secondary Raymarine radar to twenty four nautical miles, a Raymarine ten inch chart plotter, Raymarine GPS and autopilot, I Marine AIS and Raymarine VHF/SSB, ensuring modern situational awareness and reliable connectivity at sea.

Decks and deck machinery were significantly refreshed during the 2024 works, including a new teak deck and a hydraulic stern passerelle. Ground tackle consists of two 380 kg anchors with chain lengths of approximately 175 metres and 200 metres of 16 mm chain. Berthing and mooring are supported by ten fenders and mooring lines comprised of two 100 metre lines at 38 mm and two 100 metre lines at 30 mm. Deck operations are facilitated by an eight metre aluminium manual crane and a comprehensive suite of electric, manual and hydraulic winches; sail handling is eased by an electric genoa furling system, a manual storm genoa and additional deck mounted sail handling equipment.

Her rig is finished in aluminium and chrome with aluminium mast and boom, and the sail inventory comprises four sails that have been maintained on an annual schedule and are approximately eight years old, with trimming and power delivered through Harken two speed power winches.

Accommodations are arranged for eight guests in four cabins and supported by a professional crew of six accommodated in three crew cabins. The guest plan features two master suites, including a forward master, one VIP cabin and one twin guest cabin. Interiors are richly finished in warm wood, with bathrooms appointed with glass shower enclosures and TEKNA sanitary ware, while entertainment is provided by a Sonos sound system and Samsung TVs with Apple TV throughout the AV suite.

The galley is professionally equipped to cater for extended passages and

formal service, featuring Bosch refrigeration with two fridges and three freezers of 120 litres each plus an additional Bosch freezer, a Siemens oven and microwave and an industrial dishwasher. Laundry requirements are met with a Beko washing machine, Beko dryer and Beko iron.

Safety equipment and compliance are robustly maintained in line with her RINA Charter Class: two Transocean life rafts for twelve persons each, a 50 litre CO₂ system, multiple Minimax extinguishers and foam extinguishers, together with emergency signalling via an ACR EPIRB and a Global ACR SART.

For days on the water the tender is a 5.6 metre Northstar from 2024 powered by a 130 HP engine, and the toy inventory includes two new kayaks, two Yamaha Seascooters of approximately two years' age, a one year old paddleboard, water skis and a one year old Ringo.

The 2024 refit was a major programme that included a new teak deck, and the vessel undergoes annual dry dock maintenance. Planned and recent works include engine and generator service scheduled for winter 2026 and rigging replaced as new in winter 2026, with annual surveys. The winter 2025–2026 refit scope addressed replacement of twelve stationary batteries; removal and full factory refurbishment of air conditioning units; cleaning of diesel fuel tanks; comprehensive servicing of main engines and generators; maintenance of all onboard pumps; replacement of two refrigerators; new exterior deck cushion covers; installation of a new aft deck awning; general painting and varnishing; servicing of anchor chains; and renewal of life rafts and fire extinguishers.

CONTACTS

Shestakov Yacht Sales is a brokerage company specializing in the sale and service of yachts worldwide. The company offers services for buying and selling both new and used motor yachts, sailing vessels, and luxury superyachts. They also provide yacht registration, insurance, technical maintenance, crew selection, and charter organization services across the U.S., Canada, Latin America, the Caribbean, and the Bahamas.

The founder and lead broker of the company is Andrey Shestakov, a licensed and certified expert with extensive experience in marine engineering and shipbuilding.

The company has an extensive network of partnerships with major yacht manufacturers worldwide and provides services in multiple languages, including Russian, Ukrainian, Spanish, and English. The office is in Dania Beach, Florida, USA.

For more information and to view available yachts, you can visit the company's official website: <https://shestakovyachtsales.com>

Contact details

Phone: +1(954)274-4435

Email: andrey@shestakovyachtsales.com

Address



1380 Weeping Willow Way, Hollywood,
Florida 33019