

## SURAMA - ROYAL HUISMAN



**Builder:** [ROYAL HUISMAN](#)

**LOA:** 133' 0" (40.70 m)

**Year Built:** 1997

**Beam:** 28' 0" (8.80 m)

**Model:** N/A

**Max Draft:** 9' 6" (2.90 m)

**Price:** \$5,736,403.56 USD Subject to change.

**Cruising Speed:** 10 Knots (11.51 MPH)

[See full listing on our website](#)

**Location:** Bodrum, Turkey

**Max Speed:** 12 Knots (13.81 MPH)

---

# TABLE OF CONTENTS

---

<b>OVERVIEW .....</b>	<b>3</b>
<b>SPECIFICATIONS .....</b>	<b>5</b>
Basic Information .....	5
Dimensions .....	5
Speed, Capacities and Weight .....	6
Accommodations .....	6
Hull and Deck Information .....	6
Engine Information .....	7
<b>GALLERY .....</b>	<b>8</b>
<b>CONTACTS .....</b>	<b>12</b>

## OVERVIEW

---

The 40.7m (133.5ft) ketch SURAMA has been meticulously maintained and thoughtfully upgraded, emerging as an exceptional, ready-to-sail vessel equally suited to unhurried cruising and spirited racing. Built by the renowned Dutch yard Royal Huisman in 1997, she was conceived as a true world cruiser, capable of autonomous voyages to remote anchorages, while her lightweight, Lloyd's-classified aluminum hull and racing-conscious detailing deliver outstanding performance when the regatta flags are flying.

Care for SURAMA has been exhaustive, with a disciplined refit programme ensuring that almost every system and mechanical component has been recently serviced, rebuilt, or replaced. A comprehensive refit at Royal Huisman in 2017 was followed by significant winter maintenance in 2018 and 2019, leaving her in peak operational condition and ready for immediate use.

The yacht bears the distinguished naval architecture of Ted Hood, an exterior penned by Fontaine, and 217GT of refined interiors by Winch Design, a pedigree that is immediately apparent in both form and finish. Her lifting centerboard keel provides exceptional versatility, reducing draft from 6.8m (22.3ft) while sailing to just 2.9m (9.4ft) when retracted, permitting access to shallow coves and harbours off limits to many comparable yachts.

Inside, SURAMA offers a calm, contemporary ambience that celebrates space and light. The deckhouse lounge, framed by panoramic windows and skylights, bathes the informal dining area in daylight and affords guests expansive views from sumptuous seating. Below, the main saloon presents a generous semi-circular settee with a TV to port and an informal dining arrangement to starboard, a perfect blend of comfort and conviviality.

Aft, the cockpit is a versatile social hub designed for alfresco dining, the central table able to fold down into a comfortable sunpad. Additional seating and dining spaces are arranged between the twin helm stations and the flybridge,

all sheltered by a wide bimini, while a central section of the aft deck folds down to form a convenient swim platform for easy water access.

Accommodation for up to eight guests is arranged in three cabins accessed from a central lobby. The owner's suite occupies a split-level aft position with a curved sofa to starboard, steps rising to the en suite on the port side and private access to the cockpit. Two mirror-image twin cabins amidships, to port and starboard, each include a pullman berth and en suite facilities.

When not under sail, SURAMA is propelled by twin Mercedes 570hp engines, delivering a cruising speed of 11 knots and an impressive maximum range of 4,305 nautical miles. Offered for sale and currently in her present location, she represents a rare opportunity, promoted by yacht sales in the area as an ideal choice for the most discerning buyer.

# SPECIFICATIONS

---

## Basic Information

---

**Category:**  
Sail yachts

**Year Built:**  
1997

**Sub category:**  
Cruising Ketch

**Country:**  
Turkey

**Model Year:**  
1997

## Dimensions

---

**LOA:**  
133' 0" (40.70 m)

**Max Draft:**  
9' 6" (2.90 m)

**Beam:**  
28' 0" (8.80 m)

## Speed, Capacities and Weight

---

**Cruise Speed:**

10 Knots (11.51 MPH)

**Water Capacity:**

1547.78 Gallons

**Max Speed:**

12 Knots (13.81 MPH)

**Fuel Capacity:**

5578.78 Gallons

**Gross Tonnage:**

217 Pounds

## Accommodations

---

**Crew Cabin:**

3

**Crew Berths:**

6

## Hull and Deck Information

---

**Hull Material:**

Aluminum Yachts

**Hull Designer:**

N/A

**Deck Material:**

Aluminum

**Interior Designer:**

Andrew Winch Designs Ltd

**Hull Configuration:**

N/A

## Engine Information

---

**Engines:**

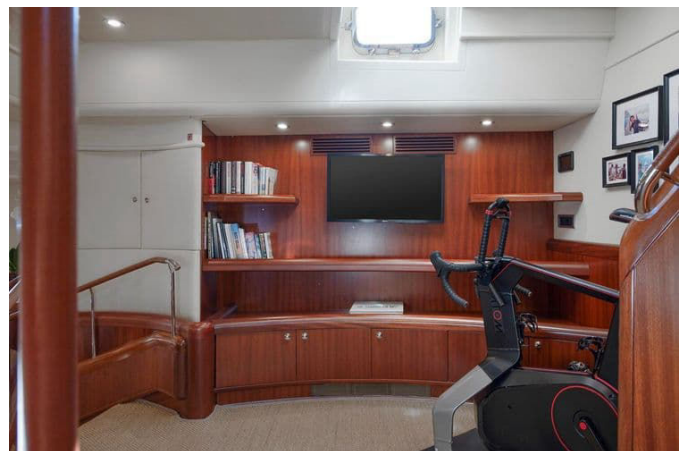
1

**Manufacturer:**

MERCEDES

# GALLERY









# CONTACTS

---

Shestakov Yacht Sales is a brokerage company specializing in the sale and service of yachts worldwide. The company offers services for buying and selling both new and used motor yachts, sailing vessels, and luxury superyachts. They also provide yacht registration, insurance, technical maintenance, crew selection, and charter organization services across the U.S., Canada, Latin America, the Caribbean, and the Bahamas.

The founder and lead broker of the company is Andrey Shestakov, a licensed and certified expert with extensive experience in marine engineering and shipbuilding.

The company has an extensive network of partnerships with major yacht manufacturers worldwide and provides services in multiple languages, including Russian, Ukrainian, Spanish, and English. The office is in Dania Beach, Florida, USA.

For more information and to view available yachts, you can visit the company's official website: <https://shestakovyachtsales.com>

## Contact details

---

**Phone:** +1(954)274-4435

**Email:** [andrey@shestakovyachtsales.com](mailto:andrey@shestakovyachtsales.com)

## Address

---



1380 Weeping Willow Way, Hollywood,  
Florida 33019