

# MIRASOL - DANISH YACHT/HOLLAND JACHTBOUW



**Builder:** [DANISH YACHT/HOLLAND JACHTBOUW](#)

**LOA:** 147' 0" (45 m)

**Year Built:** 2014

**Beam:** 29' 0" (9 m)

**Model:** N/A

**Max Draft:** 13' 1" (4 m)

**Price:** \$10,509,481.37 USD Subject to change.

**Cruising Speed:** 12 Knots (13.81 MPH)

[See full listing on our website](#)

**Location:** Saint-Mandrier-sur-Mer, France

**Max Speed:** 13 Knots (14.96 MPH)

# TABLE OF CONTENTS

**OVERVIEW ..... 3**

**SPECIFICATIONS ..... 5**

    Basic Information ..... 5

    Dimensions ..... 5

    Speed, Capacities and Weight ..... 6

    Accommodations ..... 6

    Hull and Deck Information ..... 6

    Engine Information ..... 7

**GALLERY ..... 8**

**DETAILED DESCRIPTION ..... 13**

**CONTACTS ..... 15**

# OVERVIEW

---

## Opulent 2014 Yacht Available in France

Embark on a journey aboard this exquisite 147-foot yacht, a true marvel of design and craftsmanship, now on the market in the picturesque waters of France. Built in 2014, this vessel seamlessly blends luxury with performance, making it an ideal choice for those seeking a yacht that offers both opulence and adventure.

As you navigate the seas at a cruising speed of 12 knots, the yacht's streamlined aluminum hull and meticulously crafted deck promise a smooth and stable voyage. With a top speed of 13 knots, you can effortlessly discover the stunning coastlines and secluded bays that await exploration. The yacht's impressive gross tonnage of 196 pounds highlights its sturdy build, while the expansive 29-foot beam provides generous space for leisure and entertainment.

The interior, designed by the esteemed Rhoades Young, is a haven of elegance. Accommodating up to seven guests in four tastefully furnished cabins, each area is a perfect blend of comfort and style. The four bathrooms ensure privacy and convenience for everyone on board, making it an excellent choice for family retreats or hosting friends.

Powered by a robust Volvo inboard engine, this yacht is not only visually striking but also a dependable partner for your sea adventures. With a substantial fuel capacity of 4,755 gallons and a water capacity of 1,585 gallons, you can set out on long journeys without the concern of frequent refueling or restocking.

Whether you desire a peaceful retreat or a thrilling escapade, this yacht provides the perfect setting for both. Its current location in France offers a beautiful backdrop for your maritime aspirations, with endless possibilities for exploration and relaxation.

Seize the opportunity to own this remarkable vessel. With yacht sales thriving in the current location, now is the ideal time to act. Discover the pinnacle of luxury and performance—this yacht is ready to welcome you aboard for unforgettable experiences on the open waters.

# SPECIFICATIONS

---

## Basic Information

---

**Category:**  
Sail yachts

**Year Built:**  
2014

**Sub category:**  
Performance Sailboat

**Country:**  
France

**Model Year:**  
2014

## Dimensions

---

**LOA:**  
147' 0" (45 m)

**Max Draft:**  
13' 1" (4 m)

**Beam:**  
29' 0" (9 m)

## Speed, Capacities and Weight

---

**Cruise Speed:**

12 Knots (13.81 MPH)

**Water Capacity:**

1585.03 Gallons

**Max Speed:**

13 Knots (14.96 MPH)

**Fuel Capacity:**

4755.1 Gallons

**Gross Tonnage:**

196 Pounds

## Accommodations

---

**Sleeps:**

7

**Total Heads:**

4

## Hull and Deck Information

---

**Hull Material:**

Aluminum Yachts

**Hull Designer:**

N/A

**Deck Material:**

Aluminum

**Interior Designer:**

Rhoades Young

**Hull Configuration:**

N/A

## Engine Information

---

**Engines:**

1

**Engine Type:**

Inboard

**Manufacturer:**

Volvo

**Fuel Type:**

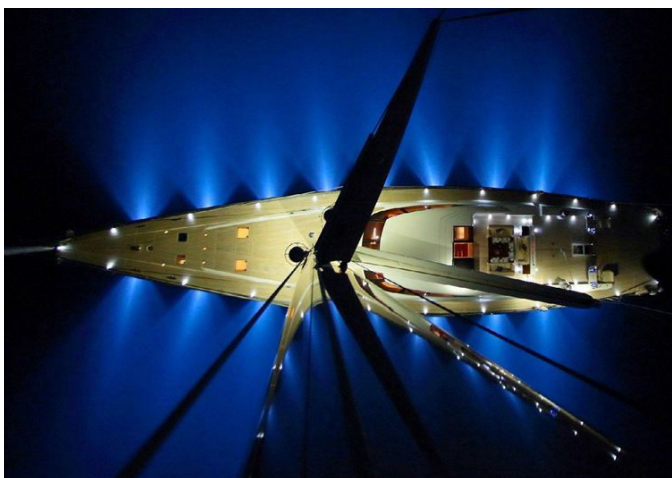
Diesel



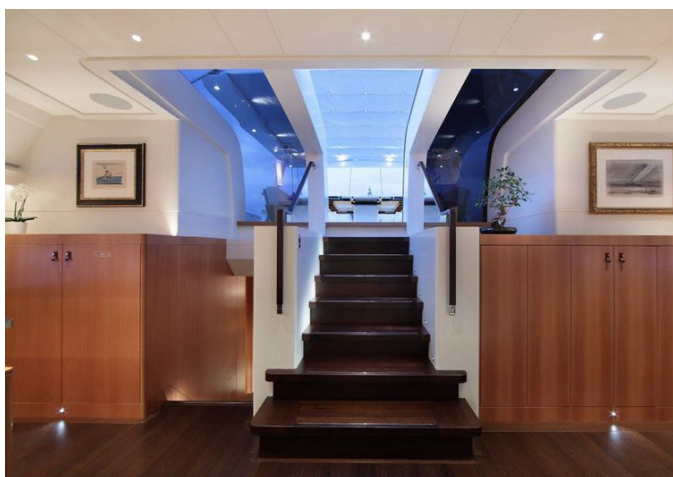
# GALLERY



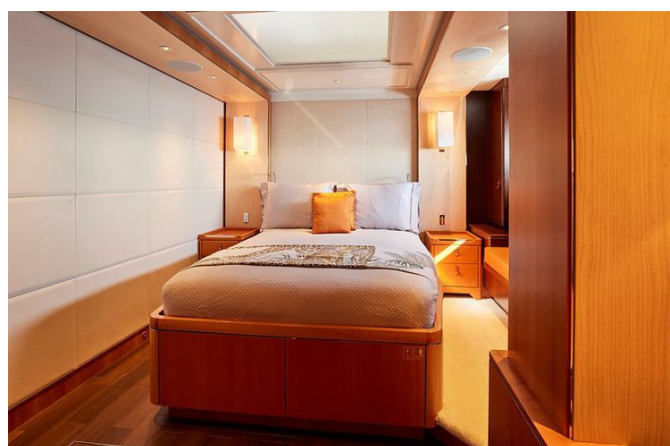




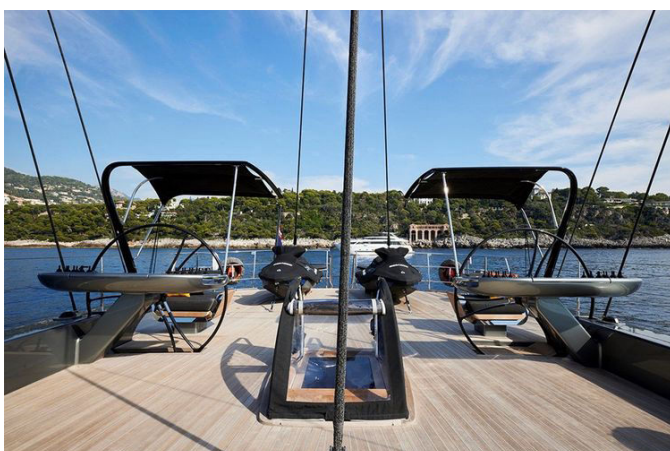
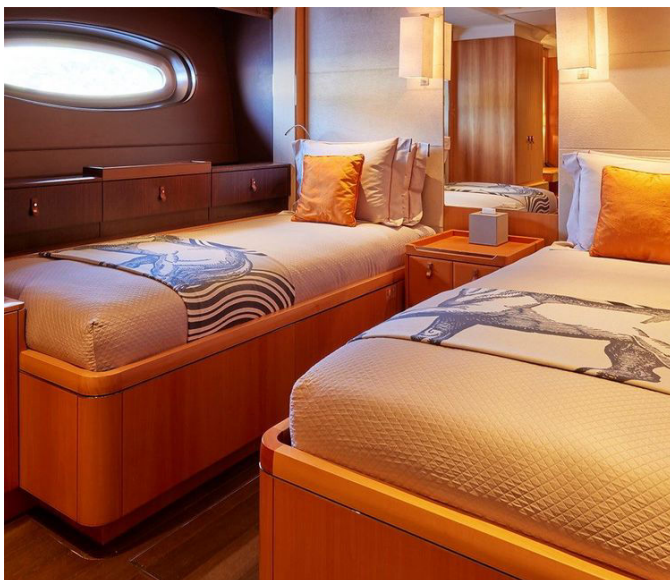












# DETAILED DESCRIPTION

---

## Section name

---

This splendid 45-meter sailing yacht, crafted by the esteemed UK Naval Architect Bill Dixon, made its debut in 2014. Constructed by Holland Jachtbouw, this full displacement sloop is engineered for optimal performance, allowing it to glide swiftly and efficiently through the gentle Mediterranean breezes. The yacht is equipped with carbon fiber spars and rigging, enhancing its sailing prowess. Its expansive and inviting cockpit is ideal for dining under the open sky, complemented by a hydraulic Bimini that functions like the roof of a convertible. The telescopic keel is a standout feature, enabling the yacht to navigate into shallower, scenic harbors in the Mediterranean while boosting sailing performance when lowered.

The interior, envisioned by Rhoades Young, radiates tranquility and minimalism, employing a blend of materials, fabrics, and textures. Sunlight bathes the cabins and living spaces, fostering a calm atmosphere. The yacht can host up to 8+2 guests across four cabins, including a lavish owner's suite with double beds, a walk-in closet, and a generous bathroom. Additional guest cabins provide comfortable lodging with private facilities. The crew is well-accommodated with six members residing in three cabins.

Mechanically, the yacht is driven by a 552 kW Volvo Penta engine, reaching a top speed of 13 knots and a cruising speed of 12 knots. It offers a range of 2,700 nautical miles at an economical speed of 10 knots, with a fuel consumption of 60 liters per hour. The yacht's construction includes an aluminum hull and superstructure with teak decks, certified by Lloyd's Register. It is outfitted with sophisticated mechanical and electrical systems, such as a Hundersted gearbox, JP3 steering system, and a comprehensive electrical setup.

The yacht's sail collection, refreshed in 2020 with North 3Di sails, comprises a mainsail, staysail, genoa, and jib/blade, all supported by Southern Spars mast and boom. The deck is fitted with Lewmar and Rondal winches, and the yacht is equipped with Reckman furlers for seamless sail management. Cutting-edge communication and entertainment systems include VSAT, NAVTEX, and a Lantic AV system with integrated control.

For recreation, the yacht provides a diverse selection of tenders and watersports gear, including a Williams Jet Tender, Seabobs, wakeboards, and various inflatable water toys. Kiteboarding and winging equipment are also on hand, along with diving gear for underwater adventures. The yacht's security and safety apparatus ensure peace of mind, featuring liferafts, life jackets, and fire-fighting equipment.

Recent refurbishments and maintenance have preserved the yacht in immaculate condition, with major work completed in 2025, including a 10-year class survey, engine and generator servicing, and thorough inspections and upgrades. The yacht's standout features, such as its high-performance rig and sails, al-fresco dining area, and strategic use of glass for natural illumination, make it an outstanding option for those in search of a luxurious and high-performance sailing experience.



# CONTACTS

---

Shestakov Yacht Sales is a brokerage company specializing in the sale and service of yachts worldwide. The company offers services for buying and selling both new and used motor yachts, sailing vessels, and luxury superyachts. They also provide yacht registration, insurance, technical maintenance, crew selection, and charter organization services across the U.S., Canada, Latin America, the Caribbean, and the Bahamas.

The founder and lead broker of the company is Andrey Shestakov, a licensed and certified expert with extensive experience in marine engineering and shipbuilding.

The company has an extensive network of partnerships with major yacht manufacturers worldwide and provides services in multiple languages, including Russian, Ukrainian, Spanish, and English. The office is in Dania Beach, Florida, USA.

For more information and to view available yachts, you can visit the company's official website: <https://shestakovyachtsales.com>

## Contact details

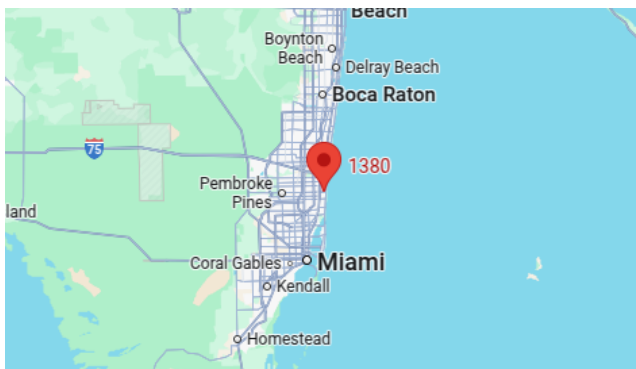
---

**Phone:** +1(954)274-4435

**Email:** [andrey@shestakovyachtsales.com](mailto:andrey@shestakovyachtsales.com)

## Address

---



1380 Weeping Willow Way, Hollywood,  
Florida 33019