

## FUSION - GROUPE PONCIN



**Builder:** [GROUPE PONCIN](#)

**Beam:** 12' 0" (3.82 m)

**Year Built:** 2006

**Min Draft:** 6' 3" (1.90 m)

**Model:** N/A

**Price:** \$81,942.56 USD Subject to change.

[See full listing on our website](#)

**Location:** Auckland, New Zealand

**LOA:** 38' 0" (11.67 m)

# TABLE OF CONTENTS

---

<b>OVERVIEW .....</b>	<b>3</b>
<b>SPECIFICATIONS .....</b>	<b>5</b>
Basic Information .....	5
Dimensions .....	5
Speed, Capacities and Weight .....	5
Hull and Deck Information .....	6
Engine Information .....	6
<b>GALLERY .....</b>	<b>7</b>
<b>DETAILED DESCRIPTION .....</b>	<b>13</b>
<b>CONTACTS .....</b>	<b>16</b>

# OVERVIEW

---

## 2006 Harmony 38 | Fusion

This Harmony 38, named Fusion, is a remarkable yacht for sale, currently located in a prime sailing destination. The owner selected this vessel for its robust design, perfect for global voyages without needing significant alterations. Crafted in France by Poncin Yachts, it boasts infusion and Kevlar reinforcement, along with ample storage for 200L of diesel and 500L of water, plus an additional 200L for rainwater.

Since 2021, numerous enhancements have been made to ensure safety and independence on the open sea. These include 1100w solar panels, 400Ah lithium-ion batteries, an 80L freezer complementing the 200L fridge, and two upgraded Raymarine autopilots with radar, including the Evolution EV1. A 2000w Victron inverter was installed in 2024, and all electronics are accessible via tablet or smartphone.

The yacht's sails, including the headsail, gennaker, and staysail, were updated in 2021 and are equipped with furlers. The mainsail features three automatic reefs, with all lines leading back to a cockpit protected by a hard dodger. A 24kg Spade anchor with 100m of chain ensures secure anchoring, with a windlass remotely controlled from the helm.

Recent 2023 upgrades include Coppercoat antifoul, a new AB290 Hypalon tender with covers, a Tohatsu 9.8 Hp 2-stroke engine, and Starlink, complementing the 2021 Iridium Go. Additionally, a barely-used Sunbrella winter cockpit tent and mosquito nets for all portholes and companionway doors are included.

After an incredible journey around the globe, the owner is reluctantly preparing to sell this exceptional yacht to return to work. Fusion has proven itself as a superb ocean cruiser, fully equipped for long voyages with ample spares and backups on board.

For those looking to buy a yacht, Fusion offers an unparalleled opportunity to embark on new adventures. Contact us for more details on this exquisite yacht sale.

# SPECIFICATIONS

---

## Basic Information

---

**Category:**  
Sail yachts

**Year Built:**  
2006

**Model Year:**  
2006

**Country:**  
New Zealand

## Dimensions

---

**LOA:**  
38' 0" (11.67 m)

**Beam:**  
12' 0" (3.82 m)

**Min Draft:**  
6' 3" (1.90 m)

## Speed, Capacities and Weight

---

**Water Capacity:**  
184.92 Gallons

**Fuel Capacity:**  
52.83 Gallons

## Hull and Deck Information

---

**Hull Material:**

Fiberglass and Plastic Yachts

**Hull Designer:**

N/A

**Deck Material:**

Fiberglass

**Interior Designer:**

N/A

**Hull Configuration:**

Monohull

## Engine Information

---

**Engines:**

1

**Engine Type:**

Inboard

**Manufacturer:**

Volvo Penta

**Fuel Type:**

Diesel



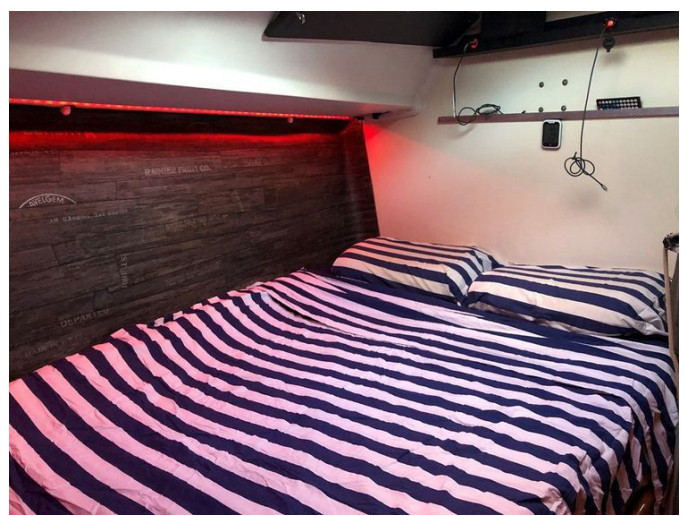
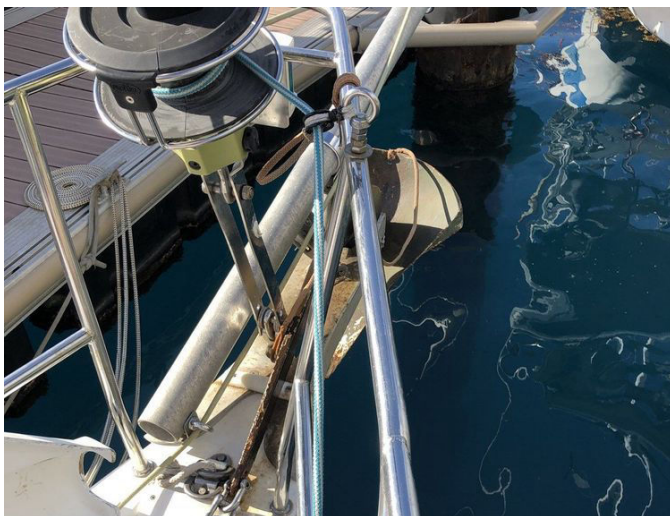
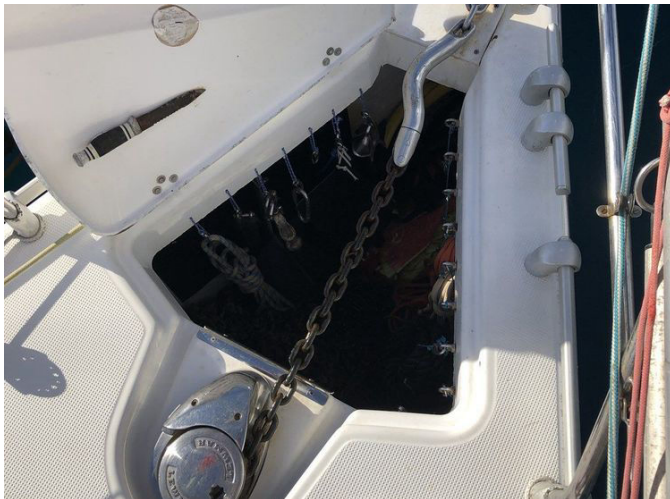
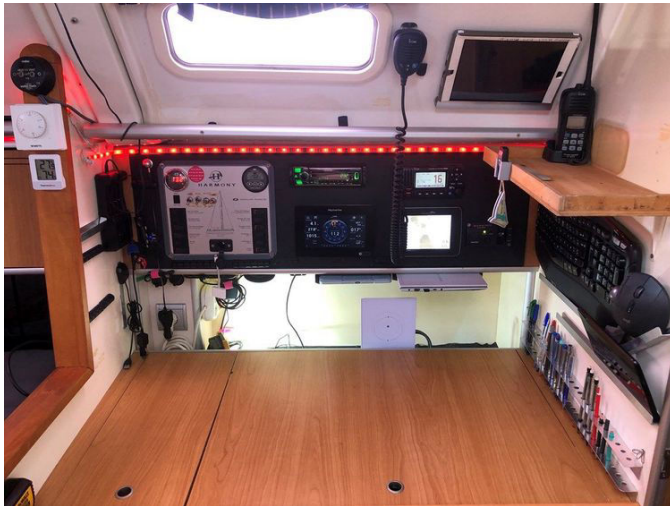
# GALLERY



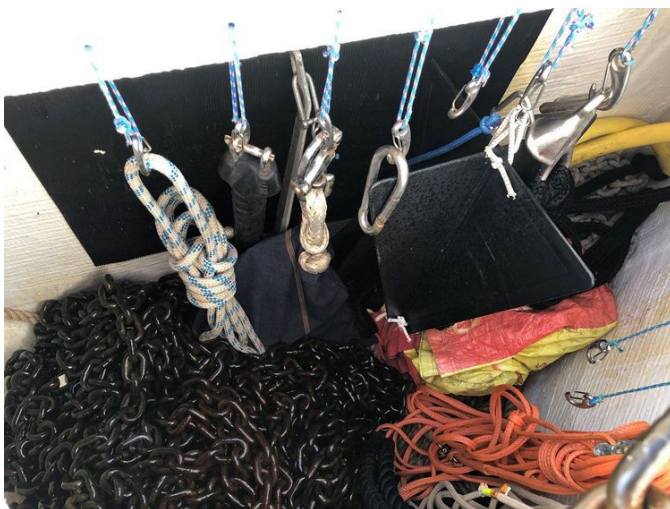




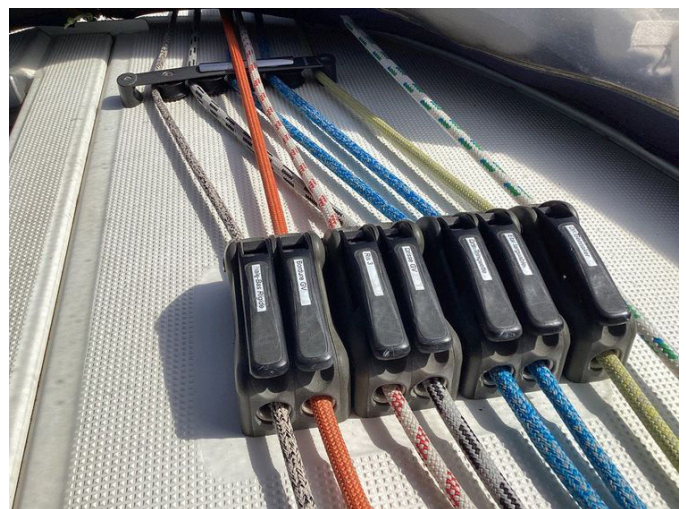
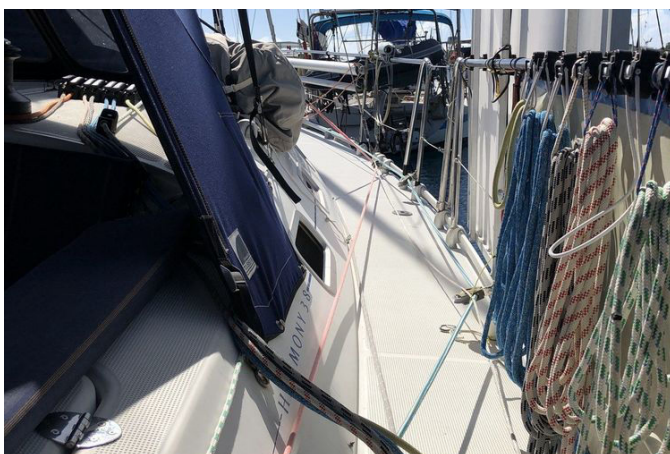
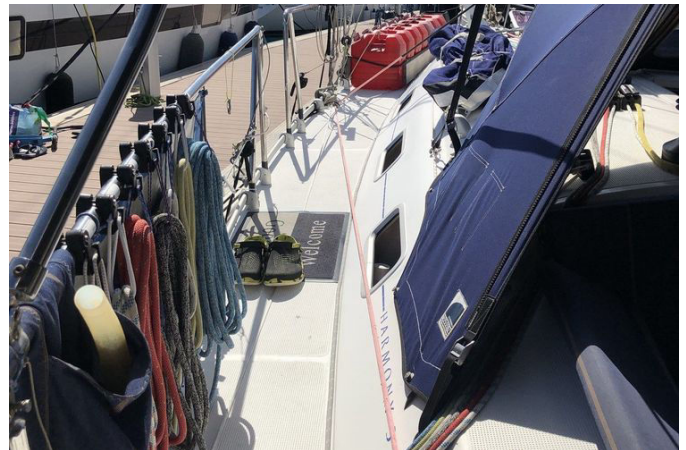


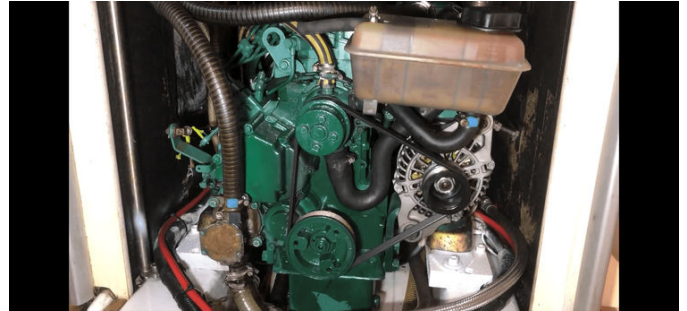














# DETAILED DESCRIPTION

---

## Inventory - Fusion

---

The Fusion is a remarkable vessel that embodies the perfect blend of elegance and functionality. Crafted by the renowned builder Poncin and designed by Mortains & Mavrikios, this 2006 Harmony 38 model is a testament to superior craftsmanship and innovative design. With a length of 11.67 meters (38.29 feet) and a beam of 3.82 meters (12.53 feet), the Fusion offers ample space and stability, making it an ideal choice for both leisurely cruises and adventurous voyages.

The vessel's hull and deck are constructed from durable fiberglass, ensuring longevity and resilience against the elements. The fin keel with a bulb, made from lead, not only enhances performance but also provides rust-free assurance. The Fusion's air height reaches an impressive 19.00 meters (62.34 feet), and it boasts a displacement of 7,000 kilograms, further emphasizing its robust build.

Equipped with a Volvo Penta D2-40 engine, the Fusion delivers 40 horsepower, ensuring smooth and efficient navigation. The engine, dating back to 2006, has clocked 3,449 hours and was last serviced on January 3, 2024. With a fuel capacity of 200 liters and a consumption rate of 2.23 liters per hour at 1800 RPM, the Fusion offers a cruising speed of 6 knots and a maximum speed of 7 knots. The vessel's propulsion system includes a fixed 3-blade propeller and a folding 2-blade Jprop with adjustable pitch, all driven by a reliable shaft and rod control steering system.

The Fusion's accommodation is designed for comfort and convenience, featuring three cabins with ventilated mattresses, including a VIP cabin with a sofa, large storage, a safe, and a phone charger. The vessel offers three double berths and one queen berth, with a drop-down saloon suitable for two. The

head height is a generous 2.00 meters (6.56 feet), ensuring ample space for movement. The bathroom facilities include a thermostatic shower with a spray consumption limiter and an electric head with a spare motor, complemented by a 40-liter holding tank.

In the galley, you'll find a well-equipped space with a 200-liter top-load refrigeration system, an 80-liter under-bed freezer, and an Eno oven with dual heating elements for butane and propane gas. The double epoxy sink with a small drainer, a 30-liter microwave, and additional features like a Nespresso coffee maker, filtered water system, and retractable work shelf make meal preparation a breeze.

The Fusion is outfitted with state-of-the-art electronics, including a Raymarine Axiom 7 DownVision sonar, Raymarine EVO 1 autopilot, LCJ Capteur CV7 ultrasonic wind instruments, and a Raymarine Quantum Doppler 2 radar. The vessel also features a Vesper Marine 9000 AIS Auto ID system, Icom VHF radios, a 33" Schneider TV with a Fire TV remote, and a Kenwood stereo system with JBL speakers. Connectivity is ensured with an Iridium Go sat phone and Starlink, while the NMEA 2000 and Shipmodul multiplex 3Wi-N2K provide seamless integration of all electronic systems.

Powering the Fusion are four Victron 100 Amp/hour LIFEPO4 Superpack batteries, a Bosch 100 Amp/hour AGM engine battery, and a Victron 30 Amp/hour battery charger. The vessel is self-sufficient in electricity, thanks to its optimized charging systems. Additional electrical equipment includes a Katadyn watermaker, solar panels with a total output of 1100 watts, a Wallas oil heater, and a Victron inverter.

The sail inventory is impressive, with an aluminium mast and stainless steel ACMO standing rigging, checked by an authorized insurance agent in 2018. The sails, mostly from 2021, include a Delta 3 reef tri-radial hydranet main sail, a Delta Vortex tri-radial hydranet headsail, and an Elvtrom tri-radial gennaker on a furler. The vessel is equipped with Profurl, Nex, and Selden furlers, and

Lewmar winches for efficient sail handling.

Safety is paramount on the Fusion, with a manual bilge pump capable of 7,570 liters, an electric bilge pump with a 3,785-kilogram capacity, a 4-pax life raft, and life jackets with AIS beacons. The vessel also includes a life ring, EPIRB, fire extinguishers, and a grab bag with essential survival equipment.

The ground tackle comprises a Spade 24 kg anchor, limousine chain, and a Fortress FX-11 spare anchor. The Lewmar V3 windlass with remote control ensures easy anchoring. Deck gear includes an AB 290 Hypalon tender with a Tohatsu 9.8 Hp outboard, a deck wash system, a deck shower, a bimini with a rainwater collector, and a Plancha BBQ.

In summary, the Fusion is a meticulously maintained vessel, lying in Gulf Harbour, New Zealand, with its registration valid until April 5, 2026. It offers a perfect blend of luxury, performance, and safety, making it an exceptional choice for discerning sailors.

# CONTACTS

---

Shestakov Yacht Sales is a brokerage company specializing in the sale and service of yachts worldwide. The company offers services for buying and selling both new and used motor yachts, sailing vessels, and luxury superyachts. They also provide yacht registration, insurance, technical maintenance, crew selection, and charter organization services across the U.S., Canada, Latin America, the Caribbean, and the Bahamas.

The founder and lead broker of the company is Andrey Shestakov, a licensed and certified expert with extensive experience in marine engineering and shipbuilding.

The company has an extensive network of partnerships with major yacht manufacturers worldwide and provides services in multiple languages, including Russian, Ukrainian, Spanish, and English. The office is in Dania Beach, Florida, USA.

For more information and to view available yachts, you can visit the company's official website: <https://shestakovyachtsales.com>

## Contact details

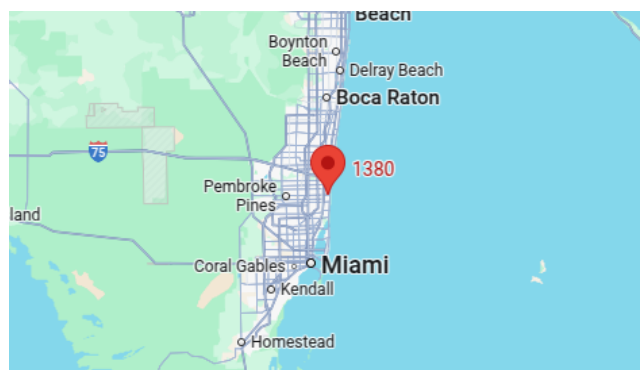
---

**Phone:** +1(954)274-4435

**Email:** [andrey@shestakovyachtsales.com](mailto:andrey@shestakovyachtsales.com)

## Address

---



1380 Weeping Willow Way, Hollywood,  
Florida 33019