

SIDEWINDER - FAST PASSAGE



Builder: [FAST PASSAGE](#)

LOA: 40' 0" (12.19 m)

Year Built: 1978

Beam: 12' 0" (3.81 m)

Model: 39

Min Draft: 18' 1" (5.50 m)

Price: \$59,900 USD Subject to change.

Max Draft: 18' 1" (5.50 m)

[See full listing on our website](#)

Location: Portland, United States

Cruising Speed: 6.50 Knots (7.48 MPH)

Max Speed: 8 Knots (9.21 MPH)

TABLE OF CONTENTS

OVERVIEW	3
SPECIFICATIONS	4
Basic Information	4
Dimensions	4
Speed, Capacities and Weight	5
Accommodations	5
Hull and Deck Information	5
Engine Information	6
GALLERY	7
DETAILED DESCRIPTION	14
CONTACTS	18

OVERVIEW

1978 Fast Passage 39

Thrilled owners, countless oceanic voyages, and multiple full circumnavigations!

This sought-after Blue Water Cruiser is sturdy, welcoming, and masterfully built. Crafted by the renowned William Garden and assembled at the distinguished Philbrooks shipyard in Sidney, B.C., these agile blue water cruisers possess an impressive heritage.

Only a handful of production boats are capable of enduring the rigors of a worldwide race, and even fewer have triumphed in such an endeavor. When sailor Francis Stokes completed the 27,000-mile inaugural BOC Challenge in 1983 on his Fast Passage 39, he was one of only 10 finishers in a race that started with 16 participants, featuring everything from state-of-the-art, custom-built racers to modified family cruisers. The Fast Passage 39 holds a distinctive place within this range.

Sidewinder is ready to embark on new sailing adventures with its future owners!

Discover this remarkable yacht for sale at its current location and seize the chance to own a vessel that offers both excitement and luxury. Don't let this opportunity pass—schedule a viewing today and explore yacht sales at the current location!

SPECIFICATIONS

Basic Information

Category:
Sail yachts

Year Built:
1978

Sub category:
Cruising Sailboats for Sale

Country:
United States

Model Year:
1978

Dimensions

LOA:
40' 0" (12.19 m)

Beam:
12' 0" (3.81 m)

Min Draft:
18' 1" (5.50 m)

Max Draft:
18' 1" (5.50 m)

Speed, Capacities and Weight

Cruise Speed:
6.50 Knots (7.48 MPH)

Water Capacity:
100 Gallons

Max Speed:
8 Knots (9.21 MPH)

Fuel Capacity:
50 Gallons

Gross Tonnage:
17 Pounds

Accommodations

Sleeps:
4

Total Heads:
1

Hull and Deck Information

Hull Material:
Fiberglass and Plastic Yachts

Hull Designer:
William Garden

Deck Material:
Fiberglass

Interior Designer:
William Garden

Hull Configuration:
Monohull

Engine Information

Engines:

1

Engine Type:

Inboard

Manufacturer:

Perkins

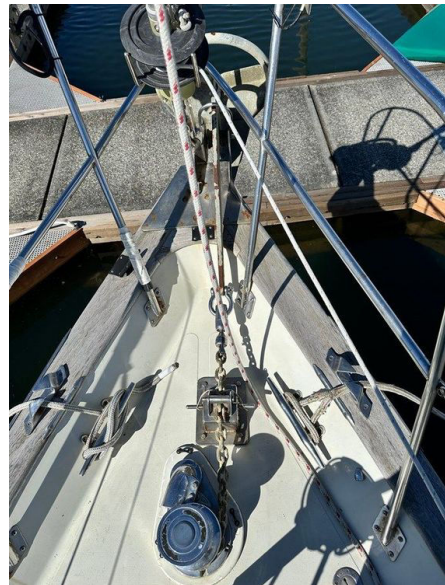
Fuel Type:

Diesel

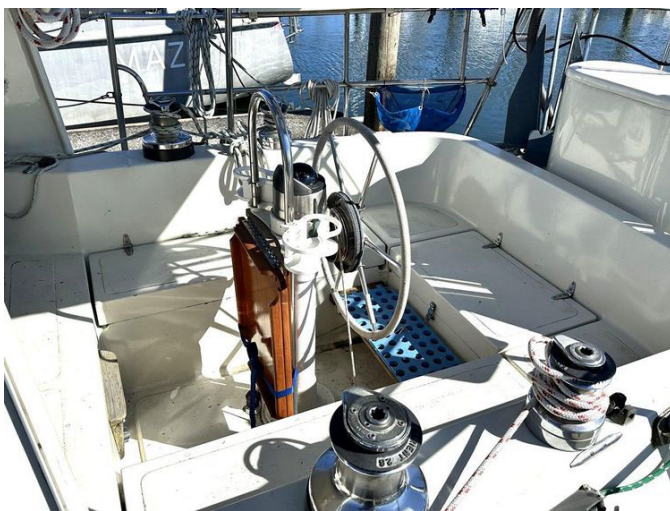
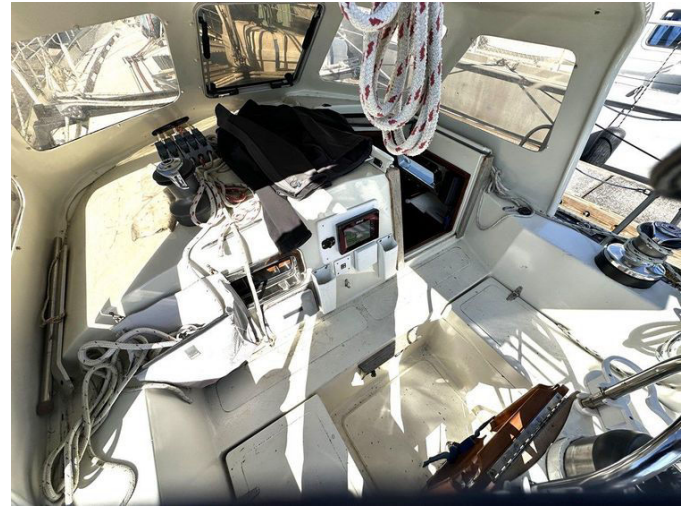
GALLERY

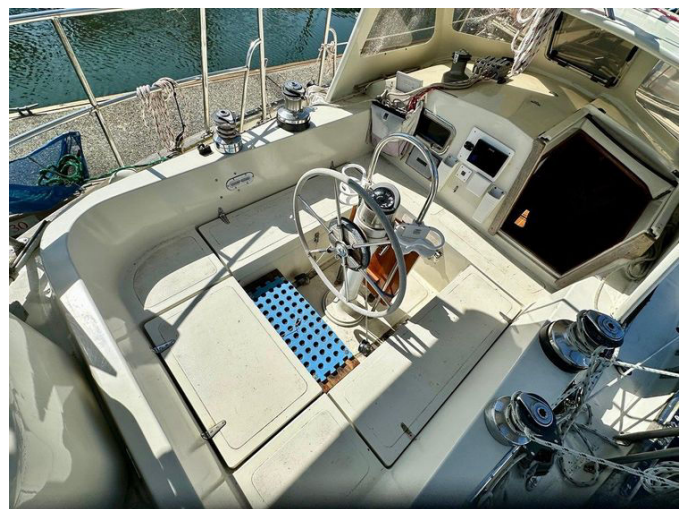
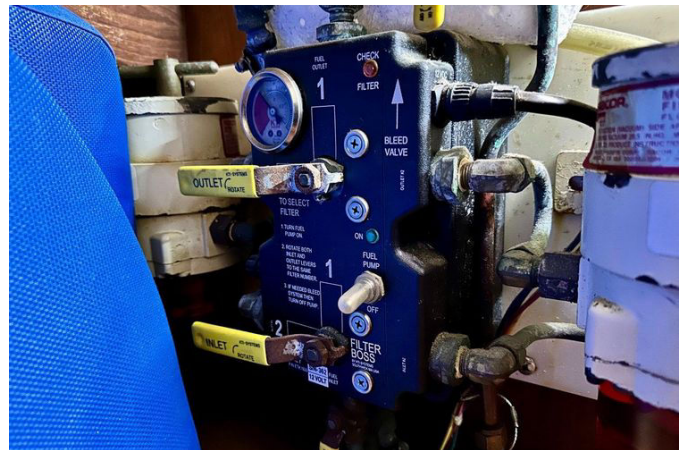


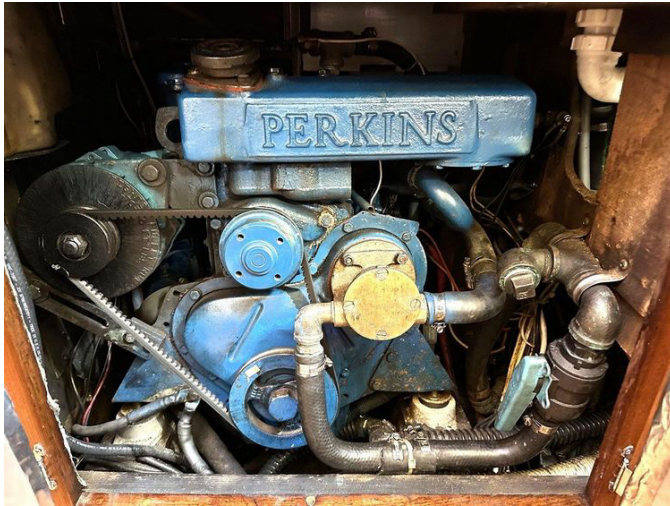












DETAILED DESCRIPTION

Section name

The 1978 Fast Passage 39 exemplifies the pleasure of yacht ownership, having thrilled its owners with countless ocean crossings and multiple complete circumnavigations. This in-demand Blue Water Cruiser is not only robust and cozy but also crafted with exceptional quality. Conceived by the distinguished William Garden and built at the esteemed Philbrooks shipyard in Sidney, B.C., these swift blue water cruisers have an outstanding lineage.

Very few production yachts are truly capable of withstanding the rigors of a global race, and even fewer have successfully completed such a feat. However, when sailor Francis Stokes completed the 27,000-mile inaugural BOC Challenge in 1983 on his Fast Passage 39, he was one of only 10 finishers in a race that started with 16 participants. These participants included everything from cutting-edge, custom-designed speedsters to modified family cruisers, with the Fast Passage 39 occupying a unique niche.

Now, Sidewinder is poised to set sail on new journeys with its future owners, offering the potential to take them wherever their sailing aspirations may lead. Seize the chance to explore this extraordinary vessel—contact us today to schedule a viewing.

Other details

The galley on this yacht features a 12VDC Technautics refrigerator with top-loading access, paired with a similar top-loading freezer situated in the forward cabin, providing generous space for storing supplies during extended trips. Culinary tasks are simplified with a Force 10 stove and oven, equipped with three burners and an LP solenoid switch for added safety, alongside a

Proctor/Silex microwave for swift meal preparation.

In the realm of electronics and navigation, the yacht is equipped with a B&G V7 plotter/GPS system, complete with AIS and sonar functions, ensuring thorough situational awareness. The JRC 1500 MKII radar boosts navigational security, while the Simrad AP16 autopilot facilitates effortless control on long journeys. Communication is supported by a West Marine VHF 600dsc and an ICOM IC-718 HF transceiver, guaranteeing dependable communication with other boats and coastal stations. For navigation, the yacht is fitted with both a Simrad RC 36 and a Ritchie magnetic compass, providing accurate directional assistance.

Please be aware that the company provides the details of this yacht in good faith but does not guarantee or warrant the accuracy of this information or the condition of the yacht. Potential buyers are advised to have their agents or surveyors verify any details they wish to confirm. This yacht is available subject to prior sale, price modification, or withdrawal without notice.

Features

This yacht boasts an extensive range of features crafted to elevate both comfort and performance while at sea. The electrical setup includes a shore power inlet, allowing the vessel to seamlessly connect to dockside power when moored.

The electronics package is comprehensive, incorporating a depth sounder, radar, navigation center, plotter, autopilot, compass, GPS, and VHF radio, all working in harmony to ensure smooth navigation and communication.

Within the yacht, you'll discover a variety of equipment aimed at convenience and comfort. Both an electric and a manual bilge pump are in place for effective water management, while the marine head and hot water system enhance onboard comfort. The galley is well-equipped with an oven,

refrigerator, and deep freezer, and the fresh water maker guarantees a continuous supply of drinking water. A battery charger is also provided to sustain power levels during long journeys.

Externally, the yacht is outfitted with a wind generator and solar panel, offering renewable energy sources to support the vessel's electrical needs. The cockpit is designed for leisure and social interaction, featuring plush cushions and a cockpit table.

The rigging includes a steering wheel and an electric winch, streamlining sail management. The sail collection is noteworthy, featuring a storm jib, battened mainsail, gennaker cruising spinnaker, and genoa, delivering adaptability and performance across a range of wind conditions.

Propulsion

This yacht is equipped with a dependable Perkins engine, specifically the 4-108 model, crafted in 1979. Delivering a total of 51 horsepower, this inboard engine is engineered for consistent performance. Having accumulated 1,280 hours, it reflects moderate usage and indicates a well-cared-for system. The engine features a direct drive configuration, celebrated for its efficiency and straightforward mechanics, making it a favored option among sailors.

Running on diesel, the engine provides both power and fuel efficiency, making it perfect for long-range cruising. The propulsion system is enhanced by a robust three-blade propeller crafted from bronze, ensuring smooth and efficient navigation through the water. This combination of engine and propeller materials is selected for its durability and reliability, offering peace of mind during extended journeys.

Specifications

This yacht features remarkable dimensions, with a total length of 39.5 feet, a

maximum draft of 5.5 feet, and a beam width of 11.83 feet. These measurements enhance its stability and roominess, making it an ideal vessel for long-distance travel. With a dry weight of 21,000 pounds, the yacht is built with a sturdy and durable structure capable of withstanding diverse marine environments.

Fitted with an electric windlass, anchoring is made simple, improving the ease of operation. The electrical system runs on a 12V circuit, ensuring dependable power for all onboard systems and comforts.

The yacht is well-equipped for extended voyages with its tank capacities. It includes a fresh water tank holding 100 gallons, providing plenty of water for the crew. The fuel tank, with a capacity of 53 gallons, allows for extensive cruising without the need for frequent refueling.

Onboard accommodations feature two cozy cabins, offering private sleeping spaces for guests or family members. Additionally, there is a well-equipped head, ensuring convenience and comfort during prolonged stays at sea. This blend of features makes the yacht a superb option for those in search of both adventure and luxury.

CONTACTS

Shestakov Yacht Sales is a brokerage company specializing in the sale and service of yachts worldwide. The company offers services for buying and selling both new and used motor yachts, sailing vessels, and luxury superyachts. They also provide yacht registration, insurance, technical maintenance, crew selection, and charter organization services across the U.S., Canada, Latin America, the Caribbean, and the Bahamas.

The founder and lead broker of the company is Andrey Shestakov, a licensed and certified expert with extensive experience in marine engineering and shipbuilding.

The company has an extensive network of partnerships with major yacht manufacturers worldwide and provides services in multiple languages, including Russian, Ukrainian, Spanish, and English. The office is in Dania Beach, Florida, USA.

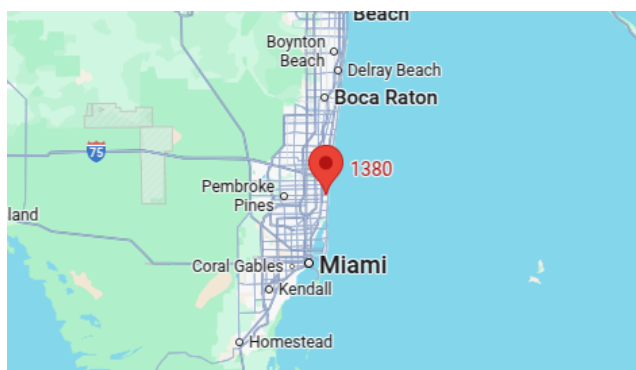
For more information and to view available yachts, you can visit the company's official website: <https://shestakovyachtsales.com>

Contact details

Phone: +1(954)274-4435

Email: andrey@shestakovyachtsales.com

Address



1380 Weeping Willow Way, Hollywood,
Florida 33019