

42 CATALINA 1990 - CATALINA YACHTS



Builder:

[Catalina Yachts](#)

Year Built:

1990

Model:

N/A

Price:

[See on website](#)

Location:

Key Largo, United States

Max Speed:

0 Knots (0 MPH)

LOA:

42' 0" (12.83 mm)

Beam:

- (0 mm)

Min Draft:

- (0 mm)

Max Draft:

- (0 mm)

Cruising Speed:

0 Knots (0 MPH)

TABLE OF CONTENTS

Overview	4
Specifications	5
Basic Information	5
Dimensions	5
Speed, Capacities and Weight	5
Accommodations	6
Hull and Deck Information	6
Gallery	7
Contacts	11

OVERVIEW

"CURRENT PRICE" IS A GUIDE. ALL OFFERS RESPECTFULLY CONSIDERED.

OVERVIEW

This 1990 Catalina 42, with its desirable 4'10" shoal draft, offers an exceptional blend of comfort and performance, making it perfect for navigating the shallow waters of the Keys and beyond. Designed for long voyages, it features a roomy three-cabin layout, a well-equipped galley, and a cozy salon for relaxation or entertaining. Whether you're interested in coastal cruising or living aboard, this Catalina 42 is a timeless choice that combines capability with comfort. Don't miss the opportunity to buy this remarkable yacht for sale.

CONDITION

The Catalina 42 is in commendable condition for its age, making it an excellent choice for coastal cruising, island hopping, or living aboard. It is equipped for single-handed sailing and is ready for immediate use. Visit the current boat location and make your offer.

FEATURES

Original Raytheon Electronics Package

Two mainsails: the original full batten main and a roller furling main

135 and 150 Genoa

A symmetrical spinnaker with pole

"Newer" inverter

Oversized bimini

Please note, a trailer is not included in this yacht sale.

TRANSPORTATION

Nationwide transportation is available through CertifiedMarineTransport. Obtain a transportation quote. Custom cradles and shipment to ports for

international transport are also available. Contact our Mendon, MA office for logistics and quotes.

ENGINE(S) CONDITION

Refer to the Motors and Machinery Disclaimer for details.

TRANSPORTATION

Nationwide transport is available through CertifiedMarineTransport.com. Custom cradles and shipment to ports for overseas transport are also provided. Contact our Mendon, MA office for logistics and quotes.

MOTORS AND MACHINERY DISCLAIMER

No condition statement can be made regarding motors, engines, or machinery. A photo may show the engine compartment and machinery, but it is the buyer's responsibility to inspect and determine their actual condition.

Accessories or equipment for this yacht may not be in storage. The yacht is sold as seen. Make an offer based on its current state.

DISCLAIMER

The Company provides the details of this vessel in good faith but cannot guarantee or warrant the accuracy of this information or the condition of the vessel. Buyers should verify details they wish to validate. This yacht is offered subject to prior sale, price change, or withdrawal without notice.

All marine products, whether owned or brokered, are sold AS-IS, WHERE-IS, with NO WARRANTY OR GUARANTEE EXPRESSED OR IMPLIED. NO WARRANTIES OF MERCHANTABILITY AND FITNESS WHATSOEVER. No verbal agreements apply to the sale of this marine product.

SPECIFICATIONS

Basic Information

Category:

Sail yachts

Sub category:

Sloops for Sale

Model Year:

1990

Year Built:

1990

Country:

United States

Dimensions

LOA:

42' 0" (12.83 mm)

Min Draft:

- (0 mm)

Beam:

0

Max Draft:

- (0 mm)

Speed, Capacities and Weight

Cruise Speed:

0 Knots (0 MPH)

Cruise Speed Range:

0 Kts.

Max Speed:

0 Knots (0 MPH)

Max Speed Range:

0 Kts.

Gross Tonnage:

0 Pounds

Water Capacity:

0 Gallons.

Holding Tank:

0 Gallons

Fuel Capacity:

0 Gallons

Accommodations

Total Cabins:

—

Total Berths:

—

Sleeps:

0

Total Heads:

0

Crew Cabin:

0

Crew Berths:

0

Crew Heads:

—

Hull and Deck Information

Hull Material:

Fiberglass and Plastic Yachts

Deck Material:

Fiberglass

Hull Configuration:

N/A

Hull Designer:

N/A

Interior Designer:

N/A

Engine Information

Engines:

1

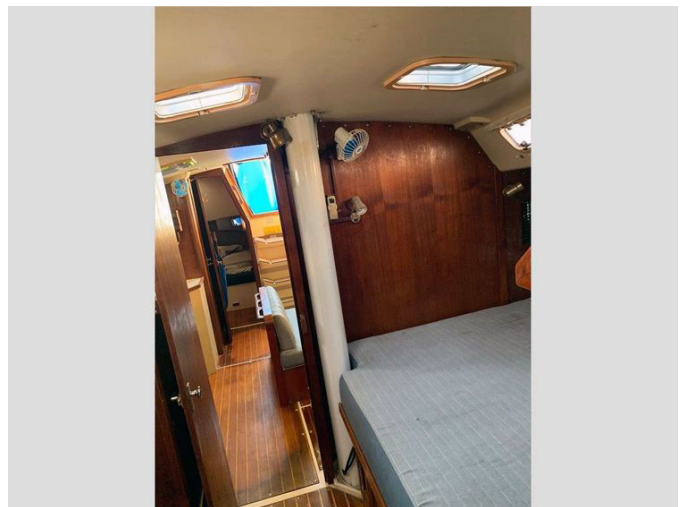
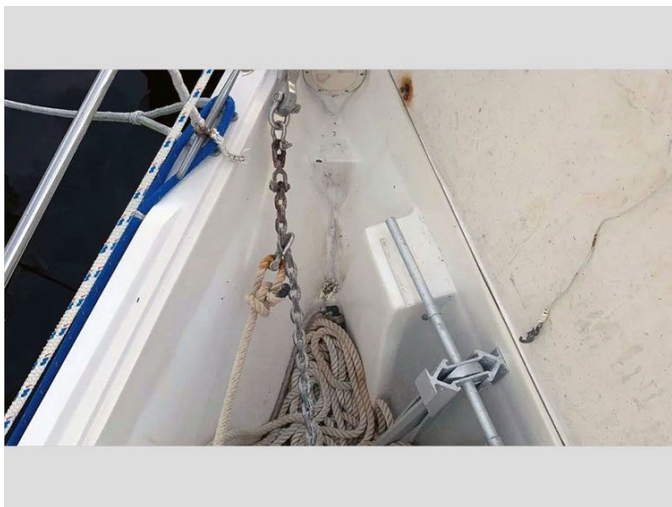
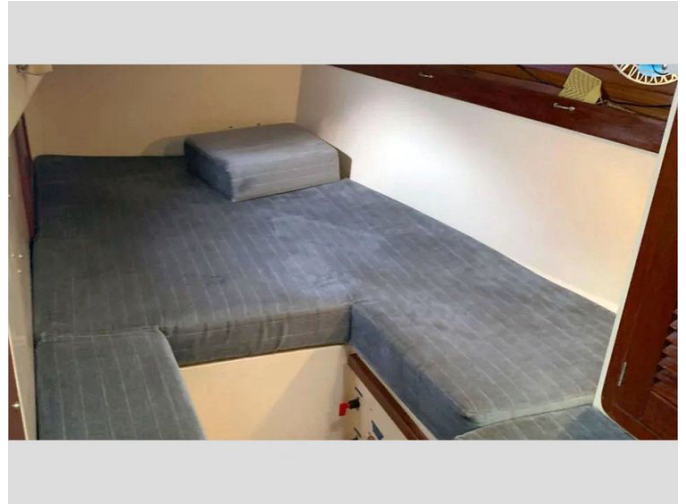
Manufacturer:

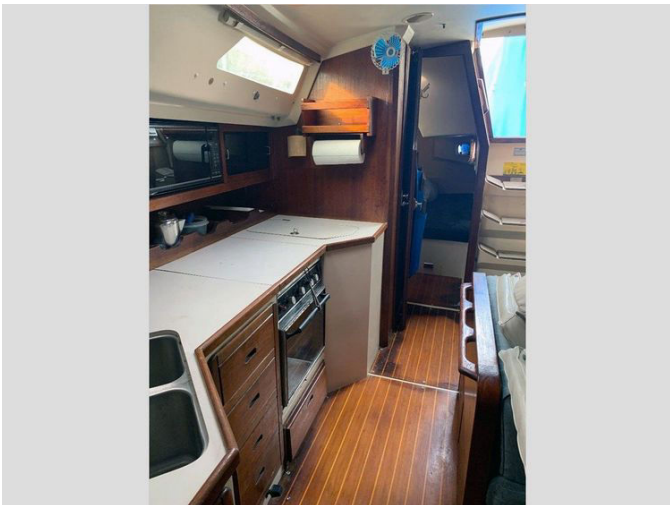
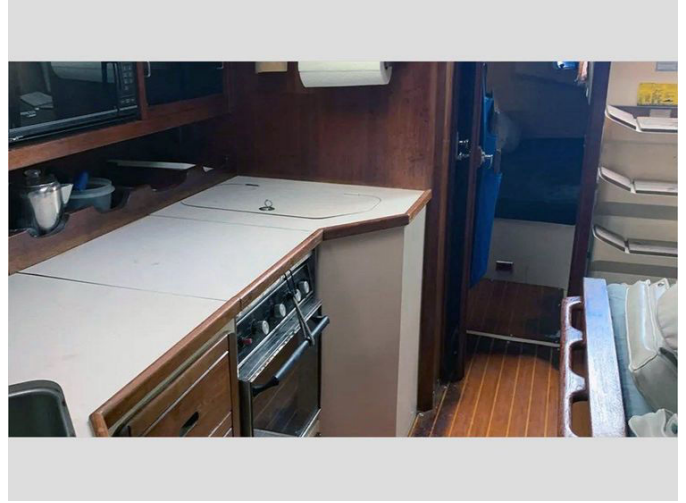
Yanmar

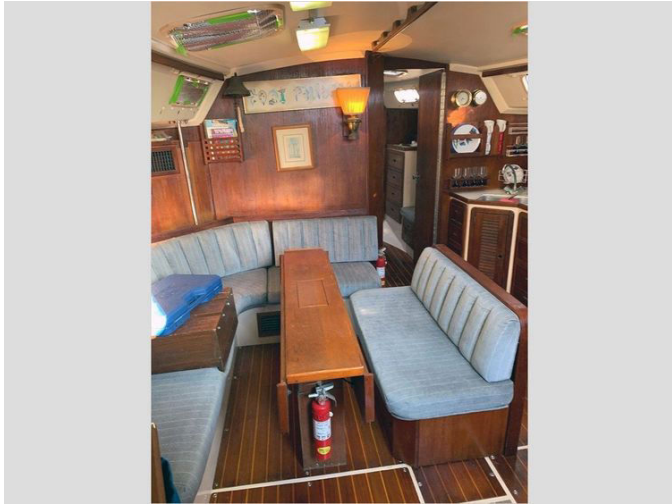
Engine Type:

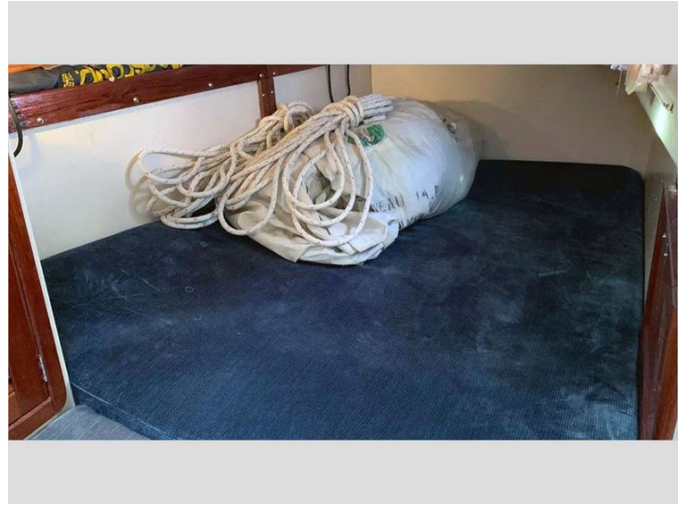
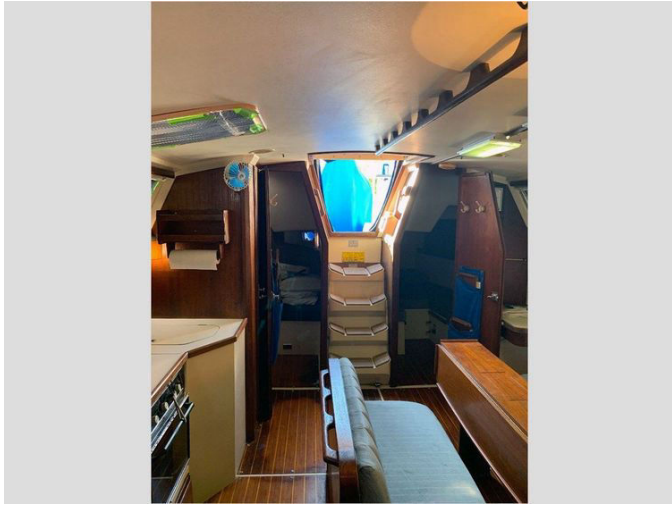
Fuel Type:

GALLERY









CONTACTS

Shestakov Yacht Sales is a brokerage company specializing in the sale and service of yachts worldwide. The company offers services for buying and selling both new and used motor yachts, sailing vessels, and luxury superyachts. They also provide yacht registration, insurance, technical maintenance, crew selection, and charter organization services across the U.S., Canada, Latin America, the Caribbean, and the Bahamas.

The founder and lead broker of the company is Andrey Shestakov, a licensed and certified expert with extensive experience in marine engineering and shipbuilding.

The company has an extensive network of partnerships with major yacht manufacturers worldwide and provides services in multiple languages, including Russian, Ukrainian, Spanish, and English. The office is in Dania Beach, Florida, USA.

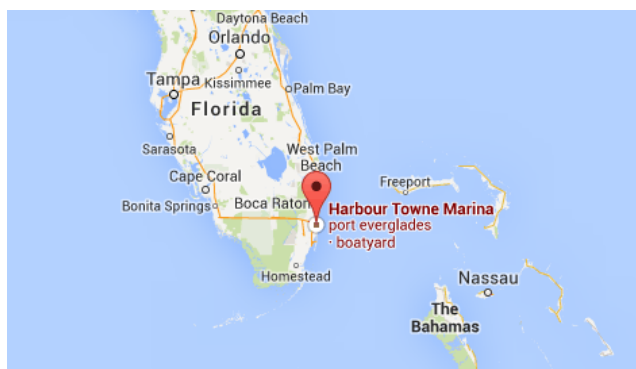
For more information and to view available yachts, you can visit the company's official website: <https://shestakovyachtsales.com>

Contact details

Phone: +1(954)274-4435

Email: andrey@shestakovyachtsales.com

Address



Harbour Towne Marina, 850 NE 3rd St,
STE 213,
Dania, FL 33004