

1996 SABRE 425 SLOOP - SABRE YACHTS



Builder: [SABRE YACHTS](#)

Beam: 12' 0" (3.91 m)

Year Built: 1996

Max Draft: 16' 5" (5 m)

Model: 425 Sloop

Price: \$159,000 USD Subject to change.

[See full listing on our website](#)

Location: Wickford, United States

LOA: 42' 0" (12.93 m)

TABLE OF CONTENTS

OVERVIEW	3
SPECIFICATIONS	4
Basic Information	4
Dimensions	4
Speed, Capacities and Weight	4
Accommodations	4
Hull and Deck Information	5
Engine Information	5
GALLERY	6
DETAILED DESCRIPTION	22
CONTACTS	26

OVERVIEW

The Sabre 425 is a masterfully designed vessel, tailored to meet the demands of the sea while offering its crew features that prioritize both ease and comfort. The deck configuration is carefully crafted for secure and straightforward operation. With a high aspect, well-balanced rig and a sturdy hull design, it provides outstanding performance on the water and excellent directional control. Its intuitive sail plan and rigging achieve an ideal balance between efficiency in light winds and robustness in challenging conditions. Experiencing the journey from its spacious T-shaped cockpit is truly enjoyable. Designed for practicality, comfort, and safety, the cockpit features high backrest combings and plenty of room for family and friends to unwind. The raised helm seat provides excellent visibility over the 44-inch stainless steel destroyer wheel. It moves smoothly through the water with a sharp entry at the bow and ample sections at the stern.

Inside, the yacht radiates elegance, comfort, and functionality. It includes two generous cabins, a refined main salon, a well-planned galley, a large navigation station, and an aft head with a separate shower.

PROVEN RELIABILITY, SAFETY, PERFORMANCE, COMFORT, AND LUXURY. If you are in the market for a top-tier, high-end, semi-custom production sailing yacht, you owe it to yourself to consider this late model Sabre 425 (the penultimate hull built). It is well-equipped and has been meticulously cared for. Thank you for your interest in this extraordinary yacht available for purchase at the current boat location. Whether you are looking to acquire a yacht or explore yacht sales at the current boat location, this vessel presents a remarkable opportunity.

SPECIFICATIONS

Basic Information

Category:
Sail yachts

Year Built:
1996

Sub category:
Cruising Sailboats for Sale

Country:
United States

Model Year:
1996

Dimensions

LOA:
42' 0" (12.93 m)

Max Draft:
16' 5" (5 m)

Beam:
12' 0" (3.91 m)

Speed, Capacities and Weight

Water Capacity:
120 Gallons

Fuel Capacity:
50 Gallons

Accommodations

Sleeps:
4

Total Heads:
1

Hull and Deck Information

Hull Material:

Fiberglass and Plastic Yachts

Hull Designer:

N/A

Deck Material:

Fiberglass

Interior Designer:

N/A

Hull Configuration:

N/A

Engine Information

Engines:

1

Engine Type:

Sail Drive

Manufacturer:

Nanni

Fuel Type:

Diesel

GALLERY











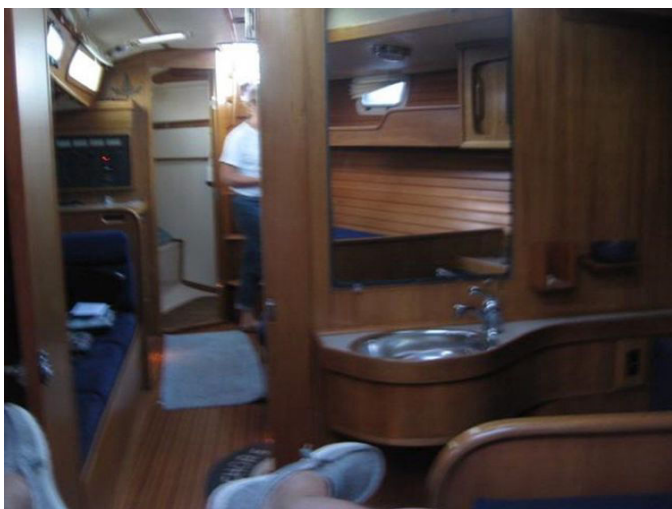
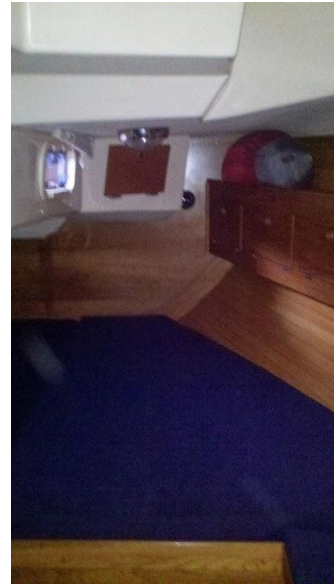


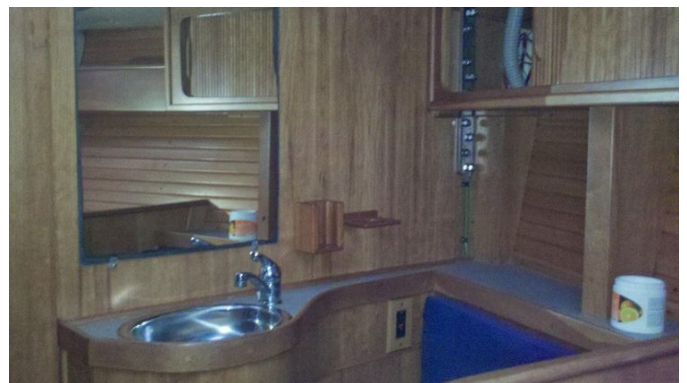


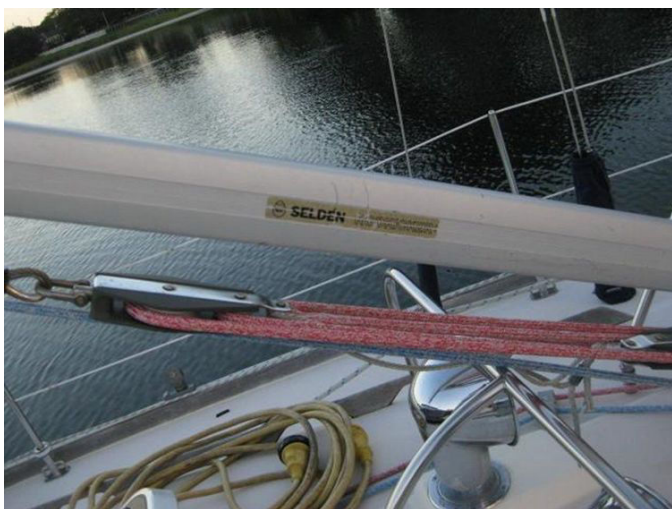


















DETAILED DESCRIPTION

Section name

This yacht represents the pinnacle of contemporary engineering and design, boasting a wide range of features and amenities that seamlessly blend comfort with functionality. The exterior is outfitted with a Bimini top, spray hood, and a Genoa cover, providing excellent protection against the elements. The electrical setup includes a shore power inlet, ensuring dependable power access while docked.

The yacht's electronics are comprehensive, featuring a depth sounder, radar, log-speedometer, and indicators for wind speed and direction. Entertainment options are plentiful, with a TV, DVD player, and CD player, all enhanced by cockpit speakers for an immersive audio experience. Navigation is straightforward with a navigation center, plotter, GPS, and VHF radio, while the autopilot and compass ensure smooth sailing.

Inside, the yacht is equipped with an electric bilge pump, oven, manual bilge pump, microwave, air conditioning, electric head, heating, hot water, refrigerator, and a battery charger, all contributing to a comfortable and convenient onboard experience. The exterior equipment includes a cockpit shower, cushions, table, and a swimming ladder, enhancing the outdoor living space.

The rigging is sturdy, featuring a steering wheel, electric winch, and a spinnaker pole. The sails are crafted for performance, including a fully battened mainsail, furling mainsail, gennaker/cruising spinnaker, and a furling Genoa.

The interior accommodations are thoughtfully arranged, beginning with a spacious owner's stateroom forward, featuring an oversized double v-berth with an insert, a vanity with an SS sink, and a mirror to port. Opposite, a large

hanging locker and storage drawers provide ample space. The main salon is elegant and well-appointed, with an L-shaped settee to port that converts to a double guest berth, and another settee to starboard. Storage is abundant, with shelves and cabinets throughout. The galley is well laid out with Corian countertops, a double SS sink, Frigidboat refrigeration, a microwave oven, and a CNG stove top and oven. Opposite the galley is a full-size navigation station with a chart table and a full complement of electronics and the ship's electrical panel. The ship's head features an electric marine toilet, SS sink, vanity with mirror, and a separate stall shower. Aft, the large guest cabin offers a double berth, hanging locker, storage cabinets, and drawers.

The galley is equipped with a SS double sink with hot and cold pressure water, a large icebox with Frigidboat refrigeration, dry goods storage, a 4-burner CNG stove with oven, a microwave oven, and Corian veneer countertops. Storage is available outboard above and below, with 120 gallons of fresh water in two tanks.

The electronics and navigation systems are cutting-edge, featuring a B&G Zeus 3 Chartplotter, B&G GPS/Radar, B&G 24" Radar Dome, Simrad NAIS 500, NEMA 2000, Standard Horizon Explorer VHF, Fusion Sirius AM/FM/CD Stereo System, Sony Color TV, Audio Bahn DVD, MP3, CD, Ritchie 5" Compass, and various B&G network displays and autopilot systems.

The electrical system includes a Heart/Interface 20 Amp Inverter/Charger, Link 2000 Battery Monitoring System, Guest Battery Switch with 2 Banks, lifeline GPL DC House Batteries, Sportsman DP-31M Starting Batteries, AC and DC Electrical System, Hella Cabin Fans, LED Cabin Lighting, courtesy lighting, cockpit and deck lighting, running lights, LED steaming, anchor, and spreader lights, new mast wiring, and a 30 amp shore power cord.

The sails and rigging are impressive, with a Leisure Furl Boom, Harken Roller Furling Head-stay, double spreader aluminum mast, Navtec hydraulic backstay, Seldon Rod Kicker Rigid Boom Vang, various furling Genoas, an asymmetrical

cruising spinnaker, and a carbon fiber pole.

The deck is well-equipped with a blue Sunbrella dodger, Bimini with connector, anchors with chain and rode, saltwater wash-down, cockpit shower, custom cockpit cushions, Edson wheel steering, Edson cockpit table, Muir windlass, Lewmar winches, and various safety systems including a MOM8 man overboard system and Life-Sling.

Additional equipment includes a Max Prop 3 blade 18" feathering prop, spare fixed prop, Espar cabin heater, Racor fuel filtering system, PSS shaft seal, flares, air horn, ship's bell, EPIRB, life jackets, fire extinguishers, dock lines, and fenders. This yacht is truly a complete package, offering everything needed for luxurious and safe sailing adventures.

Description

The Sabre 425 is an exquisitely designed sailing yacht, crafted to withstand the challenging conditions of the sea while offering its crew a seamless blend of comfort and ease of operation. The deck layout is thoughtfully engineered for safety and simplicity, boasting a high aspect, well-balanced rig and a robust hull design that guarantees superior sea handling and precise directional control. The sail plan and rigging are meticulously calibrated to deliver peak performance in both gentle breezes and harsh weather. Navigating from the expansive T-shaped cockpit is a genuine delight, with its high backrest combings and generous space for family and friends to unwind. The elevated helm seat ensures outstanding visibility over the 44-inch stainless steel destroyer wheel, and the yacht glides effortlessly with a sharp entry at the bow and full sections at the stern.

Inside, the Sabre 425 provides a lavish and inviting atmosphere. It includes two roomy cabins, a sophisticated main salon, a well-organized galley, a spacious navigation station, and an aft head complete with a separate shower. This yacht epitomizes reliability, safety, performance, comfort, and luxury. For

those seeking a premium, high-end, semi-custom production sailing yacht, the Sabre 425 is an essential consideration, particularly as it is among the final hulls produced in this distinguished series.

Upgrades

This yacht is outfitted with top-tier equipment, has been carefully maintained, and has seen numerous recent enhancements to boost its performance and comfort. In 2024, the anchor locker hatch was reconstructed, and the stern scope was upgraded with Flexi Teak, adding both resilience and visual charm. A fresh cove stripe was also introduced in 2024, revitalizing the yacht's exterior appearance.

In 2020, a new Nanni N4.50 50hp diesel engine was installed, providing dependable and efficient power. The following year, in 2021, the yacht underwent a significant electronics upgrade with the addition of a new B&G Zeus instrument suite, which includes a chart plotter, wind, speed, depth instruments, and radar. The rigging was also modernized in 2021 with new stainless steel rod rigging, running rigging, halyards, and a traveler compatible with NMEA 2020.

The mast wiring and lighting were completely revamped in 2021, featuring new LED lights for the anchor, steaming, foredeck, and spreaders, enhancing both visibility and safety. Communication and entertainment systems were also upgraded, with a new VHF radio and antenna, as well as a new stereo system installed in 2021. The interior was refreshed with new cushions in 2021, enhancing the comfort and elegance of the living areas. Additionally, a new Frigiboat refrigeration system was installed in 2019, ensuring efficient cooling and storage for provisions. These upgrades collectively enhance the yacht's outstanding performance, safety, and luxury.

CONTACTS

Shestakov Yacht Sales is a brokerage company specializing in the sale and service of yachts worldwide. The company offers services for buying and selling both new and used motor yachts, sailing vessels, and luxury superyachts. They also provide yacht registration, insurance, technical maintenance, crew selection, and charter organization services across the U.S., Canada, Latin America, the Caribbean, and the Bahamas.

The founder and lead broker of the company is Andrey Shestakov, a licensed and certified expert with extensive experience in marine engineering and shipbuilding.

The company has an extensive network of partnerships with major yacht manufacturers worldwide and provides services in multiple languages, including Russian, Ukrainian, Spanish, and English. The office is in Dania Beach, Florida, USA.

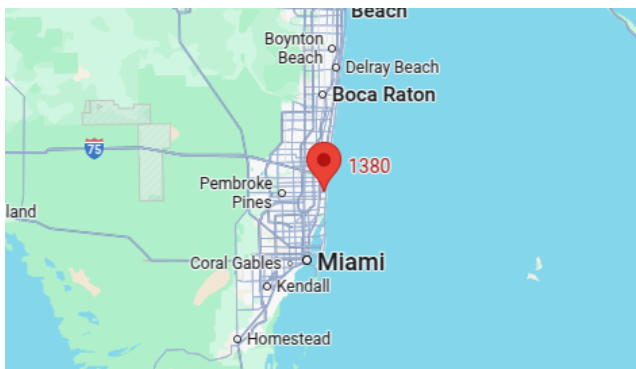
For more information and to view available yachts, you can visit the company's official website: <https://shestakovyachtsales.com>

Contact details

Phone: +1(954)274-4435

Email: andrey@shestakovyachtsales.com

Address



1380 Weeping Willow Way, Hollywood,
Florida 33019