

SCARLETT B - PACIFIC SEACRAFT



Builder: [PACIFIC SEACRAFT](#)

LOA: 44' 0" (13.41 m)

Year Built: 2001

Beam: 12' 0" (3.86 m)

Model: 44

Min Draft: 20' 6" (6.25 m)

Price: \$285,000 USD Subject to change.

Max Draft: 20' 6" (6.25 m)

[See full listing on our website](#)

Location: Seattle, United States

Cruising Speed: 7 Knots (8.06 MPH)

Max Speed: 8.50 Knots (9.78 MPH)

TABLE OF CONTENTS

OVERVIEW 3

SPECIFICATIONS 4

 Basic Information 4

 Dimensions 4

 Speed, Capacities and Weight 5

 Accommodations 5

 Hull and Deck Information 5

 Engine Information 6

GALLERY 7

DETAILED DESCRIPTION 12

CONTACTS 24

OVERVIEW

Chances to own a Pacific Seacraft 44 are uncommon, especially the newer versions. Scarlet B stands out as a well-preserved West Coast 44, having been under the care of just two owners. This yacht has been regularly serviced and enhanced, and with minimal cruising, it remains in exceptional shape both internally and externally. Presently moored in Seattle, this stunning vessel is open for inspection, making it a perfect option for prospective yacht buyers. Delve into yacht sales at the current marina and take advantage of the opportunity to acquire this extraordinary yacht on the market.

SPECIFICATIONS

Basic Information

Category:
Sail yachts

Year Built:
2001

Sub category:
Cruising Sailboats for Sale

Country:
United States

Model Year:
2001

Dimensions

LOA:
44' 0" (13.41 m)

Beam:
12' 0" (3.86 m)

Min Draft:
20' 6" (6.25 m)

Max Draft:
20' 6" (6.25 m)

Speed, Capacities and Weight

Cruise Speed:

7 Knots (8.06 MPH)

Water Capacity:

105 Gallons

Max Speed:

8.50 Knots (9.78 MPH)

Fuel Capacity:

70 Gallons

Gross Tonnage:

30 Pounds

Accommodations

Sleeps:

6

Total Heads:

2

Hull and Deck Information

Hull Material:

Fiberglass and Plastic Yachts

Hull Designer:

Bill Crealock

Deck Material:

Fiberglass

Interior Designer:

Pacific Seacraft

Hull Configuration:

Moderate Fin with Skeghung Rudder

Engine Information

Engines:

1

Engine Type:

Inboard

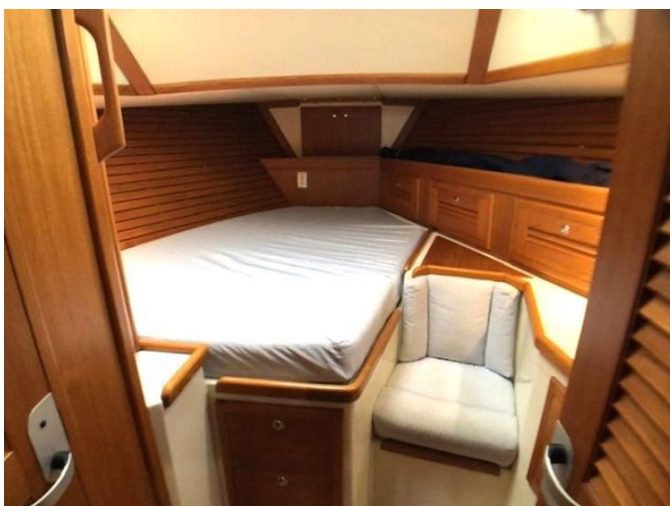
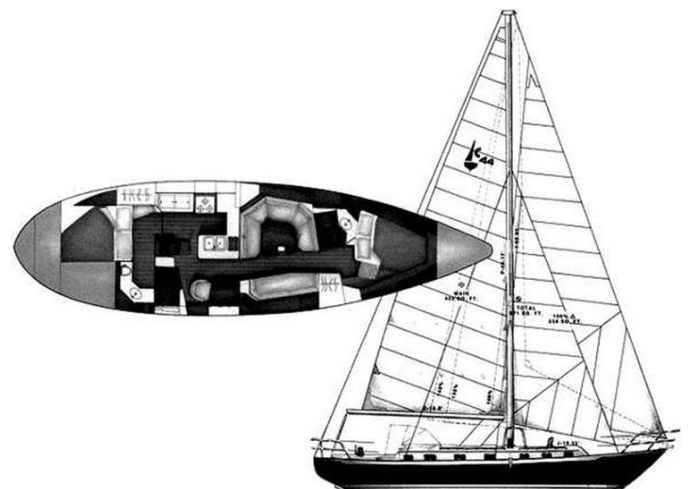
Manufacturer:

Yanmar

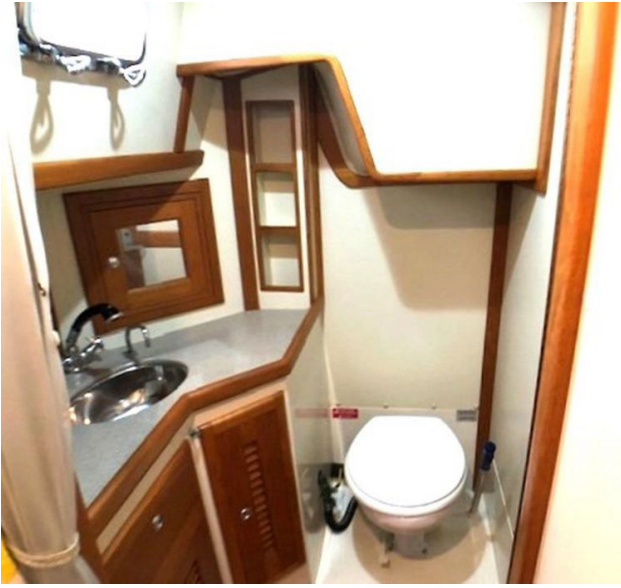
Fuel Type:

Diesel

GALLERY











DETAILED DESCRIPTION

Section name

The yacht's sails and rigging are crafted with precision to deliver top-notch performance and effortless handling. It boasts a Masthead Cutter rig with a double spreader mast and mid-boom sheeting, ensuring a strong and efficient sailing experience. The standing rigging, constructed from SS 1X19, was newly installed in 2021, offering both reliability and strength. A Forespar telescoping hard vang, also added in 2021, enhances the yacht's modern rigging capabilities. The Doyle StackPack, introduced in 2021, simplifies sail management, while the Ullman mainsail with triple reef (two reef points rigged) and Ullman headsail and staysail, both with new UV covers, provide versatility and durability. A spare jib is available for additional sail options. The Harken MKIII furling units for the headsail and staysail, along with running backstays with staysail rig, enhance the yacht's adaptability to various wind conditions. The yacht is equipped with two Harken 56-2ST electric primary winches, two Harken 40ST secondary winches, two Harken 40ST halyard winches, and one Harken 40ST mainsheet winch, ensuring smooth and efficient sail handling.

In terms of electronics and navigation, the yacht is outfitted with Raymarine e95 MFD screens at both the helm and nav station, providing comprehensive navigation data. The Raymarine RD4-24HD 4KW radar, mounted on a Questas self-leveling backstay mount, ensures accurate and reliable radar readings. The Simrad AP-44 autopilot with NAC-3 core pack offers precise steering control, while two Simrad 4" MFD displays at the helm provide AIS heading, speed, wind, depth, and GPS information. A Raymarine wind/speed/direction indicator at the helm and a Simrad 4" MFD display at the nav station further enhance navigational capabilities. Communication is facilitated by a Standard Horizon

Matrix GX2000 VHF and a Standard Horizon RAM 3 remote mic VHF. A Ritchie compass, binnacle mounted, provides traditional navigation support.

The yacht's electrical system is robust, featuring a 30 Amp 125V shorepower system and AC & DC breaker panels. A Northern Lights M673M 5.5KW diesel auxiliary generator, with only 94 hours of use, ensures reliable power supply. The house bank consists of four Lifeline AGM GPL-31T batteries, new in 2021, and a starting battery of the same model, also new in 2021. A Freedom Marine 20 inverter (2000W) and AC charger (100 amp) provide additional power management capabilities.

The galley is well-equipped with a Force 10 three-burner propane stove/oven/broiler combination, a hot and cold pressure water system, and a six-gallon AC/engine-driven hot water heater. The SEA FROST water-cooled refrigeration system ensures food and beverage storage, while dual stainless steel sinks and a GE microwave add to the galley's functionality.

Deck equipment includes stainless steel bow and stern pulpits, eight chrome bronze cleats strategically placed around the yacht, and 1X19 stainless steel lifelines for safety. Four stainless steel dorade box/cowl vent guards and stainless steel mast pulpits enhance ventilation and safety. A dual stainless steel anchor roller and a Muir Atlantic 1200 vertical electric windlass facilitate anchor handling.

The ground tackle consists of a 60 lb. CQR primary anchor with 5/16" G4 chain rode, a 20 lb. Bruce backup anchor, and a 20 lb. Fortress anchor, ensuring secure anchoring options.

Canvas features include a dodger, helm cover, and winch covers, providing protection and style.

Additional equipment includes a MaxProp three-blade bronze feathering prop, Espar D5L-C diesel forced air cabin heating, and dual Racor 75/500MAX fuel-water separators. A 3" Weems & Plath clock and barometer, Clarion XM665 six-disc CD changer, and Clarion XMA-1 stereo AM/FM receiver provide

entertainment and ambiance. The PUR MROD-40E water maker ensures fresh water supply, while a 19" Sharp flatscreen television offers entertainment options. Safety equipment includes a Lifesling and a stainless steel BBQ. A new tri-color light enhances visibility and safety.

The sail area of the yacht is 970.58 square feet, with dimensions of I: 55.58 ft, J: 19.33 ft, P: 48.08 ft, and E: 18.00 ft.

On deck, the yacht prioritizes crew safety and comfort, with 6-inch high bulwarks enclosing the deck, 30-inch high stainless steel rails, and sturdy double lifelines. Custom teak caprails add a touch of elegance. The stemhead features a heavy stainless steel fitting, through-bolted to the hull and deck, with dual anchor rollers and lock pins for secure anchor handling. An extra-large divided chain locker below deck provides ample storage for anchors and their rodes, ready for immediate use.

Manufacturer provided description

The Pacific Seacraft 44 is expertly crafted with a focus on ensuring both safety and comfort during cruising. This yacht incorporates notable design enhancements that deliver an exceptional balance for a vessel of its size, maintaining a steady motion even in challenging conditions. It is designed as the ultimate cruising sailboat for the dedicated sailor, equipped to accommodate nearly all contemporary cruising accessories, such as water makers, generators, and cutting-edge electronic systems.

Below deck, the yacht radiates warmth with its rich combination of hand-finished teak and designer fabrics, creating a welcoming and luxurious environment. The fully equipped J-shaped gourmet galley is both practical for use at sea and ideal for entertaining, providing a space where culinary creations can be effortlessly prepared. The yacht features two private staterooms, offering comfort and seclusion for guests, and a main salon that serves as a source of pride, providing a space that truly feels like home.

The Crealock "canoe" stern is not only appreciated for its visual appeal but also offers crucial reserve buoyancy without presenting excessive surface area to following seas. This design ensures that the stern significantly influences the yacht's motion, acting like a bow in breaking following seas, thereby enhancing the vessel's overall stability and safety.

Equipment list

The Pacific Seacraft 44 Voyagemaker exemplifies exceptional craftsmanship and meticulous design, offering a wide range of standard and optional features to elevate your cruising experience. The yacht's construction includes a hand-laminated hull and deck with a 1-2" balsa core, finished in an Oyster White gel coat for a timeless appearance. The initial hull laminate utilizes vinylester resin, providing outstanding resistance to blistering. The deck is crafted with a molded-in nonskid pattern for safety, and the upper and intermediate shrouds are firmly secured to stainless steel chainplates, which are through-bolted to the hull. A solid teak rubstrake adds a touch of sophistication to the hull.

The yacht's rudder is supported by a steel web frame and high-strength manganese bronze gudgeon, closely integrated with a steel-reinforced skeg. The ballast is an 11,000-pound solid lead casting, permanently affixed with stainless steel keel bolts. The interior is a structural fiberglass unit, bonded to the hull with fiberglass mat and woven roving, ensuring durability and strength. The primary bulkheads are also bonded to the hull and deck with fiberglass and bolted in place for added security.

The deck equipment is robust, with all cleats, winches, turning blocks, pulpits, and stanchions through-bolted with metal backing plates and sealed with polyurethane. The yacht features 30" high stainless steel double rail bow and stern pulpits, running lights, and double lifeline stanchions. Boarding gates on both port and starboard sides allow for easy access. The stem fitting includes

two anchor rollers with locking pins, and the divided chain locker accommodates two anchor rodes. Chrome-plated bronze deck hardware, including Harken winches and Spinlock rope clutches, ensures reliable performance.

Inside, the yacht showcases varnished teak woodwork and a white Formica cabin house trunk. The interior features louvered locker doors, solid drop doors with hidden hinges, and chrome bronze push-button locks on all locker doors and drawers. With 6' 5" headroom and a teak and holly sole throughout, the cabin area is both spacious and elegant. The forecabin offers a 6' 8" long double berth, vanity dressing seat, and large hanging lockers. The main salon includes a 7' long "U" shaped dinette that converts to a double berth, teak lockers, bookshelves, and a solid teak drop-leaf table. The galley is equipped with a gimballed stainless steel three-burner propane stove, a large icebox, and polished stainless steel double sinks.

The aft stateroom features a 6' 6" long double berth, teak privacy door, and ample storage. The yacht's plumbing system includes three water tanks with a total capacity of approximately 105 gallons, a hot and cold pressure fresh water system, and a six-gallon hot water heater. The engine is a Yanmar 4JH2E, four-cylinder, 51 hp diesel with fresh water cooling, and the electrical system includes a master power control panel, five Lifeline AGM batteries, and Cantalupi lighting throughout the interior.

Optional equipment for the Pacific Seacraft 44 Voyagemaker includes a non-standard hull color, shoal draft Scheel keel, teak interior cabin house sides, and a teak overhead locker in the galley. Deck options include a teak cockpit table, teak capped cockpit coaming, and cockpit cushions. Spars and rigging options feature a whisker pole, cruising spinnaker hardware, and a roller furling staysail. Additional mechanical and electrical options include air conditioning with reverse cycle heat, an Espar diesel heat system, and a Max Prop three-blade feathering propeller. The yacht is also equipped with a

Seagull IV water purifier in the galley, ensuring fresh and clean water on board.

Sails & rigging

The Pacific Seacraft 44 boasts an advanced sails and rigging system crafted to boost performance and simplify handling. Central to this setup is the Masthead Cutter rig, paired with a double spreader mast that ensures both stability and strength. The mid-boom sheeting configuration allows for effective sail management, while the standing rigging, constructed from SS 1X19 and newly installed in 2021, guarantees durability and dependability. A Forespar telescoping hard vang, also added in 2021, enhances the yacht's contemporary rigging features, enabling precise sail adjustments.

The sail collection includes a Doyle StackPack, introduced in 2021, which streamlines sail handling, and an Ullman mainsail with a triple reef, with two reef points pre-rigged for adaptability in various wind conditions. The Ullman headsail and staysail, both equipped with new UV covers, ensure durability and protection against the elements. A spare jib is available for additional sail choices, offering versatility for different sailing situations.

The yacht is fitted with Harken MKIII furling units for both the headsail and staysail, allowing for smooth and efficient sail deployment and retrieval. Running backstays with a staysail rig enhance the yacht's flexibility in shifting wind conditions. Sail handling is further refined with two Harken 56-2ST electric primary winches, two Harken 40ST secondary winches, two Harken 40ST halyard winches, and one Harken 40ST mainsheet winch, ensuring that all sail adjustments are executed with ease and precision.

Electronics & navigation

The Pacific Seacraft 44 is outfitted with cutting-edge electronics and navigation systems, providing all the essential tools for secure and efficient sailing. At

both the helm and navigation station, Raymarine e95 MFD screens deliver extensive data and control right at your fingertips. The yacht also features a Raymarine RD4-24HD 4KW radar, mounted on a Questus self-leveling backstay mount, ensuring precise and stable radar readings even in demanding conditions.

For automated steering, the Simrad AP-44 autopilot with NAC-3 core pack offers accurate and dependable control, allowing you to effortlessly maintain your course. At the helm, two Simrad 4" MFD displays present crucial information such as AIS heading, speed, wind, depth, and GPS data, while a Raymarine wind/speed/direction indicator provides real-time updates on environmental conditions. Additionally, a Simrad 4" MFD display is positioned at the navigation station for easy access to navigation data.

Communication is ensured by the Standard Horizon Matrix GX2000 VHF, paired with a Standard Horizon RAM 3 remote mic VHF, guaranteeing clear and reliable communication at all times. For traditional navigation, a Ritchie compass, mounted on the binnacle, offers a trustworthy reference point. This comprehensive array of electronics and navigation equipment ensures that the Pacific Seacraft 44 is fully equipped for any journey, providing both safety and convenience for its crew.

Electrical

The Pacific Seacraft 44 boasts a powerful electrical system tailored to the needs of contemporary cruising. Central to this setup is a 30 Amp 125V shorepower system, delivering consistent power while docked. The yacht is equipped with both AC and DC breaker panels, guaranteeing safe and efficient electrical distribution throughout the vessel.

When shorepower is not accessible, the Northern Lights M673M 5.5KW diesel auxiliary generator, with just 94 hours of operation, serves as a reliable alternative power source. This generator ensures that all onboard systems

function smoothly, even when out at sea.

The yacht's electrical storage is managed by a collection of Lifeline AGM batteries. The house bank comprises four Lifeline AGM GPL-31T batteries, newly installed in 2021, providing sufficient power for all onboard requirements. Additionally, a separate Lifeline AGM GPL-31T battery, also new in 2021, is dedicated to engine starting, ensuring dependable engine ignition every time.

To further augment the yacht's electrical capabilities, a Freedom Marine 20 inverter and AC charger is installed. This system, featuring a 2000W inverter and a 100 amp AC charger, facilitates seamless conversion and charging, ensuring that all electrical devices and systems are powered efficiently. This comprehensive electrical configuration ensures that the Pacific Seacraft 44 is fully equipped for any voyage, offering both reliability and convenience to its crew.

Galley

The galley aboard the Pacific Seacraft 44 is meticulously crafted to offer both practicality and comfort, making it an ideal area for meal preparation while at sea. At the heart of the galley is the Force 10 three-burner propane stove, complete with an oven and broiler, providing a variety of cooking possibilities. This arrangement allows you to effortlessly create anything from simple dishes to gourmet meals.

The galley features a hot and cold pressure water system, granting easy access to water for both cooking and cleaning tasks. Enhancing this is a six-gallon hot water heater, powered by both AC and the engine, ensuring a consistent supply of hot water no matter where you are.

For your refrigeration needs, the SEA FROST water-cooled refrigeration system delivers effective cooling, keeping your provisions fresh throughout your

voyage. The dual stainless steel sinks offer plenty of space for dishwashing and food preparation, while the GE microwave adds an extra layer of convenience for quick meal preparations.

In summary, the galley of the Pacific Seacraft 44 is a well-equipped space that seamlessly blends functionality with modern conveniences, ensuring you have everything necessary to enjoy your time on the water.

Deck equipment

The deck equipment on the Pacific Seacraft 44 is expertly crafted to guarantee both safety and functionality, offering a solid foundation for all your sailing endeavors. Leading the way are the stainless steel bow and stern pulpits, providing robust support and enhancing safety on deck. The yacht is fitted with eight chrome bronze cleats, strategically positioned for optimal mooring and docking: two on the foredeck, two on the forward bulwarks, two amidships, and two at the stern.

The crew's safety is further assured by the 1X19 stainless steel lifelines, both upper and lower, which create secure boundaries around the deck. Ventilation is improved by four stainless steel dorade boxes and cowl vent guards, ensuring fresh air circulation below deck. The stainless steel mast pulpits offer an additional layer of safety and support when working around the mast.

For anchoring, the yacht is equipped with a dual stainless steel anchor roller, facilitating smooth and efficient anchor deployment and retrieval. The Muir Atlantic 1200 vertical electric windlass provides powerful and reliable assistance in handling the anchor, making anchoring operations effortless.

In summary, the deck equipment on the Pacific Seacraft 44 is thoughtfully integrated to provide a seamless combination of safety, convenience, and performance, ensuring that every aspect of your sailing experience is enhanced.

Ground tackle

The ground tackle on the Pacific Seacraft 44 is crafted to deliver dependable and secure anchoring across diverse conditions, providing peace of mind throughout your journeys. Central to this system is the 60 lb. CQR primary anchor, paired with a 5/16" G4 chain rode. This combination ensures outstanding holding power and stability, making it suitable for a variety of seabeds and anchoring scenarios.

Alongside the primary anchor, the yacht is fitted with a 20 lb. Bruce backup anchor. This secondary anchor adds an extra layer of security, offering flexibility and redundancy in anchoring strategies. Whether facing shifting weather conditions or requiring a second anchor for enhanced stability, the Bruce anchor proves to be an invaluable asset.

Rounding out the ground tackle setup is a 20 lb. Fortress anchor, renowned for its lightweight design and superior holding capabilities. The Fortress anchor excels in soft or sandy bottoms, where its design allows it to dig in and hold securely.

Together, these anchors ensure that the Pacific Seacraft 44 is thoroughly equipped for any anchoring challenge, providing both reliability and versatility to meet the demands of serious cruising.

Canvas

The canvas features on the Pacific Seacraft 44 are meticulously crafted to enhance both the yacht's functionality and visual appeal, offering essential protection and style. Leading the way is the dodger, providing vital shelter from wind and spray, ensuring a more comfortable experience for those on deck. This protective element is especially valuable in challenging weather, allowing for extended time on deck without exposure to the elements.

Complementing the dodger is the helm cover, designed to shield the helm station from the damaging effects of sun and saltwater, preserving the yacht's controls' integrity and appearance. This cover ensures the helm remains in pristine condition, ready for precise navigation whenever required.

Additionally, the yacht is fitted with winch covers, which are crucial in maintaining the performance and longevity of the winches. By protecting these essential components from the elements, the winch covers help prevent wear and corrosion, ensuring that sail handling remains smooth and efficient.

Together, these canvas elements enhance the overall durability and aesthetic appeal of the Pacific Seacraft 44, making it a well-equipped vessel for any sailing adventure.

Additional equipment

The Pacific Seacraft 44 is equipped with a variety of additional features that boost both its performance and onboard comfort, making it an ideal vessel for any sailing journey. Central to its propulsion system is the MaxProp three-blade bronze feathering propeller, which provides exceptional efficiency and maneuverability, ensuring smooth and responsive handling in diverse conditions.

For onboard comfort, the yacht includes the Espar D5L-C diesel forced air cabin heating system, creating a warm and inviting atmosphere even in cooler climates. The dual Racor 75/500MAX fuel-water separators offer dependable filtration, preserving fuel purity and ensuring optimal engine performance.

The yacht also features a 3" Weems & Plath clock and barometer, adding a touch of timeless elegance to the interior while delivering essential weather information. Entertainment options abound, with a Clarion XM665 six-disc CD changer and a Clarion XMA-1 stereo AM/FM receiver, allowing you to enjoy your favorite tunes while at sea. A 19" Sharp flatscreen television provides

additional entertainment options, perfect for unwinding after a day of sailing. For practicality and safety, the yacht is equipped with a PUR MROD-40E water maker, ensuring a steady supply of fresh water, and a Lifesling for emergencies. The stainless steel BBQ offers a convenient option for outdoor cooking, enhancing the onboard dining experience. Additionally, a new tri-color light enhances visibility and safety during nighttime navigation.

In summary, the additional equipment on the Pacific Seacraft 44 is carefully chosen to elevate the sailing experience, offering a combination of performance, comfort, and safety features that meet the needs of discerning sailors.

CONTACTS

Shestakov Yacht Sales is a brokerage company specializing in the sale and service of yachts worldwide. The company offers services for buying and selling both new and used motor yachts, sailing vessels, and luxury superyachts. They also provide yacht registration, insurance, technical maintenance, crew selection, and charter organization services across the U.S., Canada, Latin America, the Caribbean, and the Bahamas.

The founder and lead broker of the company is Andrey Shestakov, a licensed and certified expert with extensive experience in marine engineering and shipbuilding.

The company has an extensive network of partnerships with major yacht manufacturers worldwide and provides services in multiple languages, including Russian, Ukrainian, Spanish, and English. The office is in Dania Beach, Florida, USA.

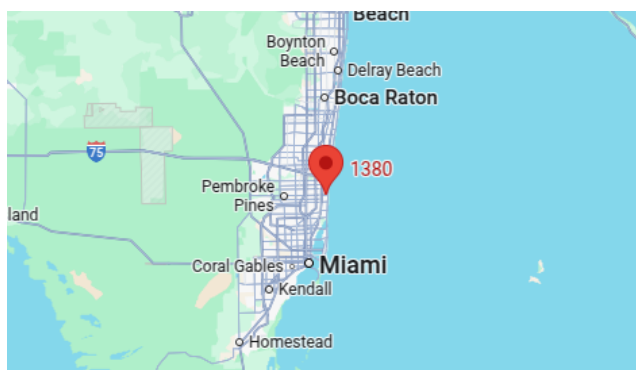
For more information and to view available yachts, you can visit the company's official website: <https://shestakovyachtsales.com>

Contact details

Phone: +1(954)274-4435

Email: andrey@shestakovyachtsales.com

Address



1380 Weeping Willow Way, Hollywood,
Florida 33019