



SHESTAKOV

Yacht Sales

## ONE LOVE - N/A



**Builder:** [N/A](#)

**Beam:** 26' 0" (8.05 m)

**Year Built:** 2019

**Max Draft:** 17' 3" (5.25 m)

**Model:** 50

**Price:** \$849,000 USD Subject to change.

[See full listing on our website](#)

**Location:** Fort Lauderdale, United States

**LOA:** 50' 0" (15.24 m)

If you would like to buy a yacht **ONE LOVE - N/A** or would like help answering any questions concerning purchasing, selling, or chartering a yacht, please call **+1(954)274-4435** or click here on <https://shestakovyachtsales.com>

---

# TABLE OF CONTENTS

---

**OVERVIEW ..... 3**

**SPECIFICATIONS ..... 5**

    Basic Information ..... 5

    Dimensions ..... 5

    Speed, Capacities and Weight ..... 5

    Accommodations ..... 5

    Hull and Deck Information ..... 6

    Engine Information ..... 6

**GALLERY ..... 7**

**DETAILED DESCRIPTION ..... 15**

**CONTACTS ..... 21**

## OVERVIEW

---

Superseding the celebrated Leopard 48, the Leopard 50 arrives as a distinguished bluewater sailing catamaran whose seaworthiness was proven in the demanding seas off South Africa. This contemporary multihull pairs assured performance with sophisticated comfort and responsive handling, exemplifying Leopard Catamarans' reputation for world-class construction. The layout is conceived to blur interior and exterior boundaries, expanding social zones and simplifying circulation. A traditional flybridge rises above the salon while the helm is thoughtfully recessed behind a bulkhead and protected beneath a dedicated hardtop, and the clear sightlines plus direct access to the aft cockpit remain an ergonomic signature that promotes safety and sociability both underway and at anchor.

The flybridge is a natural gathering place, appointed with a lounge, dining table and sunbed all sheltered by an awning to create an inviting, shaded retreat for coastal day sailing or extended passagemaking. Below decks, each cabin offers a private ensuite with a separate shower and island berths accessible from both sides, delivering a serene, residential feel. Practical liveaboard features include a dedicated utility room, and a broad options package enhances versatility, comfort and the long-range autonomy expected of a luxury cruising catamaran.

Purposeful upgrades further refine this flybridge model. A custom helm enclosure increases protection and comfort while Raymarine broadband and digital radar support confident navigation. Electrical power is managed by five 300Ah 12V Chins lithium batteries, augmented by additional new lithium units and six extra solar panels installed in 2024 for notable self-sufficiency. Propulsion has been enhanced with upgraded Yanmar 80 hp engines and Gori reverse-folding props with automatic pitch adjustment, and Shaft Shark rope cutters add dependable line protection. Bluewater independence is reinforced

by an onboard watermaker and a 110V washer/dryer. Interior appointments include custom teak tables replacing FRP in the saloon, forward lounge and top lounge, together with tailored covers for the upper lounge, its table and the tender. The sail wardrobe has been expanded with two light-air headsails—Code 0 and Code D—in excellent condition. Ground tackle comprises a stainless primary anchor with additional chain plus a secondary anchor. Fresh bottom paint and serviced running gear are scheduled for June 2026.

Offshore communications are assured via Mazu satellite systems and a mast-mounted cellular booster, while safety is comprehensive with a full USCG package and factory-installed engine-room fire suppression. Practical refinements include two rod holders, mosquito screens for the salon windows, and six new underwater lights. The vessel is maintained with biannual waxing and all windows and skylights have been fully reset, with completion scheduled before June 10. A Caribe C13 tender with a Yamaha 40 hp outboard is referenced but is not included.

In sum, the Leopard 50 is an elegant, seaworthy multihull that combines style, generous volume and performance, presenting an inviting and capable platform for serious ocean cruising.

# SPECIFICATIONS

---

## Basic Information

---

**Model Year:**  
2019

**Country:**  
United States

**Year Built:**  
2019

## Dimensions

---

**LOA:**  
50' 0" (15.24 m)

**Max Draft:**  
17' 3" (5.25 m)

**Beam:**  
26' 0" (8.05 m)

## Speed, Capacities and Weight

---

**Water Capacity:**  
185 Gallons

**Fuel Capacity:**  
243 Gallons

## Accommodations

---

**Total Heads:**  
6

## Hull and Deck Information

---

**Hull Material:**

Fiberglass and Plastic Yachts

**Hull Designer:**

N/A

**Deck Material:**

Fiberglass

**Interior Designer:**

N/A

**Hull Configuration:**

N/A

## Engine Information

---

**Engines:**

2

**Engine Type:**

Inboard

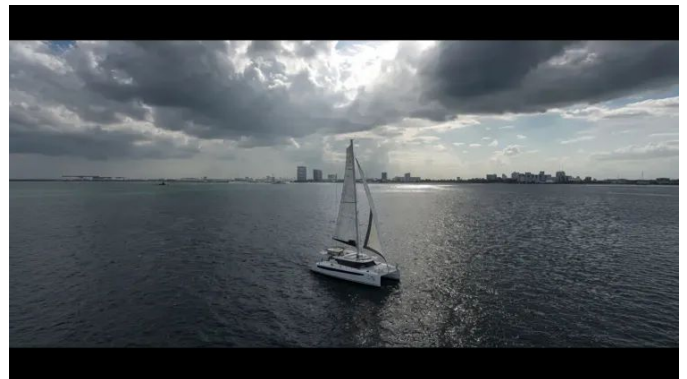
**Manufacturer:**

Yanmar

**Fuel Type:**

Diesel

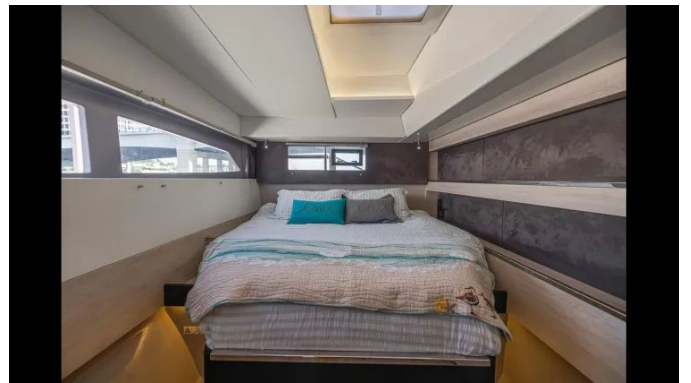
# GALLERY

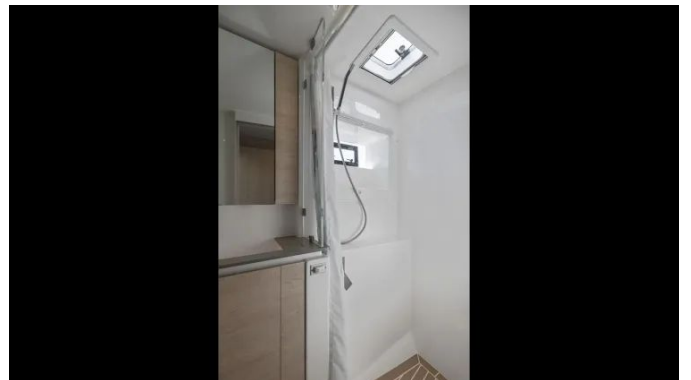
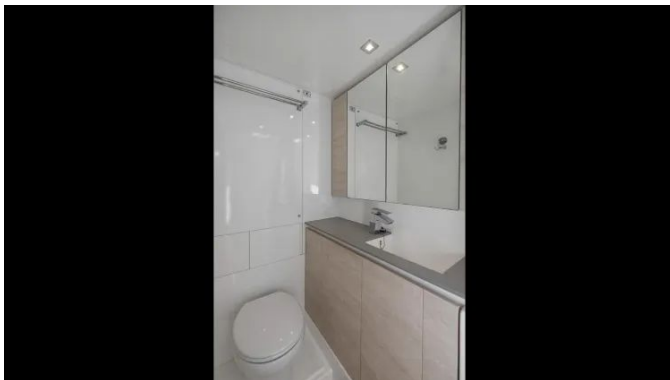
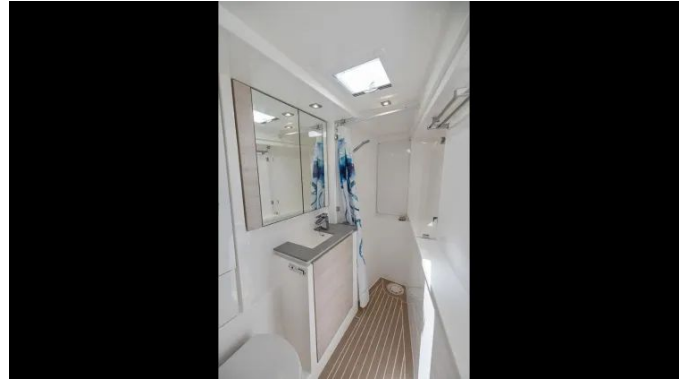


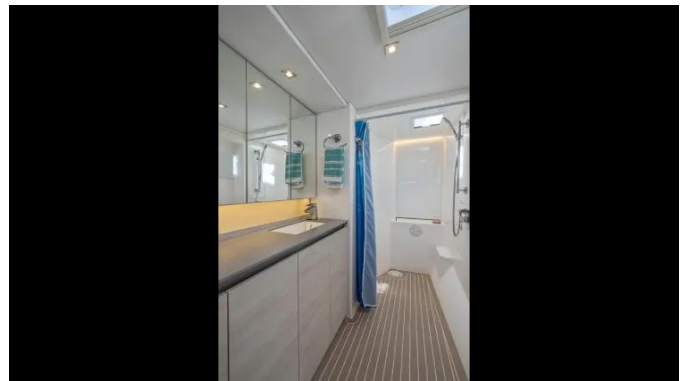
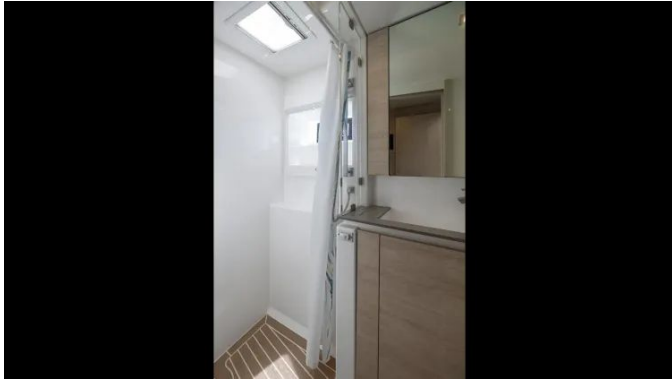


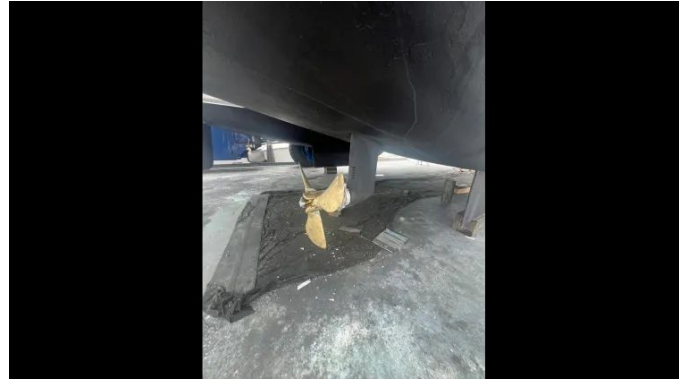












---

## DETAILED DESCRIPTION

---

### June 2026 yard period

---

During the June 2026 yard period the yacht underwent a meticulous maintenance program: the hull bottom and running gear were refinished with new paint, the engines and drives received full servicing including the installation of a new turbocharger, and extensive topside paintwork and detailing were completed to present the vessel in crisp, turn key condition.

### Leopard features

---

The factory-installed full simulated teak underfoot immediately conveys effortless elegance, while full deck and lounge pads invite relaxation throughout every social area. A square-top sail sharpens performance and streamlines sail handling, and Raymarine systems positioned at both the bridge and helm, together with a remote autopilot, deliver confident, precise navigation. A tender lift simplifies access to the water, and the intelligent four-cabin layout places the owner's cabin and VIP suite to starboard for exceptional privacy and comfort. Entertaining is lifted by a recently replaced cockpit icemaker and a four-zone stereo that fills the yacht with rich, immersive sound. Climate and light are expertly controlled by a comprehensive shade package for the saloon and cabins, presented in excellent condition, with cockpit shade curtains adding an extra layer of protection. Practical conveniences, including a windlass with both remote and foot controls, ensure effortless anchoring and carefree days on the water.

### Manufacturer provided description

---

The Leopard 50 marks the next chapter for Leopard Catamarans, conceived to

succeed the award-winning Leopard 48 and designed around exceptional versatility. Owners may specify the familiar hard-top profile in the Leopard 50P, or opt for the new Leopard 50L, which for the first time on a Leopard Catamaran of this size offers a flybridge. The Leopard 50L expands the vessel's outdoor living with a dedicated flybridge featuring a lounge area, dining table, sunbed and the option of exterior speakers and a shade awning, all approached by elegant floating stairs that rise from the aft cockpit. Even when sailing, guests benefit from generous headroom and unhindered movement without boom interference, while the flybridge remains positioned to ensure clear communication with the helm — a hallmark of every Leopard Catamaran. For those who prefer the continuous hardtop silhouette, the Leopard 50P omits the flybridge to prioritize performance, a distinction that is further enhanced when the yacht is specified with the available squaretop mainsail and other performance-oriented rigging and sail options. In either configuration, the Leopard 50 presents a refined new exterior aesthetic that gives the hull a more sophisticated presence, and the interior is offered in multiple layout configurations with four or five cabins, supported by an extensive options list.

## **Additional information**

---

A refined flybridge awaits, appointed with comfortable seating, a generous sunbed, a folding table and a shade awning, while Upholstery Pack 1 specifies Faux Leather in "Milk." Corridor and cabin floors on both sides are carpeted, with the salon and galley deliberately excluded, and the saloon benefits from blinds to the fore and flanks. The saloon table converts to a lower coffee table in addition to the standard double bunk transformation. Propulsion has been enhanced to twin Yanmar 80 hp engines with saildrives, replacing the factory 57 hp units. The onboard audio system centres on a Fusion Marine stereo with a saloon docking station offering Bluetooth, USB and AUX inputs, supported by

two Fusion speakers in the saloon and two in the aft cockpit, all controllable via a wired remote at the helm; while Raymarine multifunction displays (not included in this option) and personal wireless devices may also operate the system via the Raymarine app. External sound is extended by two forward cockpit speakers with wired remote and amplifier, and the flybridge receives two external speakers with wired remote and amplifier when specified with option B4 0002.

The Raymarine Base Pack raises navigation and comms standards, replacing the Axiom 7" with an Axiom 9" multifunction display with WiFi, SD card reader and USB outlet, and adding a Ray 60 VHF at the nav station plus an extra VHF handset at the helm. Autopilot and instrumentation are provided by a p70 colour autopilot display and an i70 colour instrument at the helm, accompanied by retractable depth and speed sensors and wind transducers. At the helm the Axiom 9" can be replaced by an Axiom 12" with WiFi, and an additional Axiom 9" with WiFi may be installed at the saloon nav station (requires Base 3,343). An autopilot wireless smart remote at the nav station is available with the Base Pack, and the electronic suite is further enhanced by a Raymarine aft facing camera and a Raymarine Automatic Identification System with AIS 650 transceiver (both items require the base pack).

Shore power and electrical distribution are comprehensively upgraded with a 12kW Global Shore Power system that supplies fixed equipment only (outlet sockets are excluded unless B4 4320/4325 is selected). The package comprises a 125/250V 50A shore power cable with a stainless steel inlet, a US 125/250V 50A to Euro 230V 32A adapter, a reverse Y adapter, a 125/250V 50A inlet, a 12kW isolation transformer with boost function and an AC switch panel, configured so full shore power capacity is achievable from one US 50A, two US 30A or one European 32A connection. Universal outlet sockets replace standard regional outlets. A 12V 100A battery charger with 90–265V, 45–65Hz input is included for boats specified with shore power or genset options. A 3000W 110V/60Hz inverter supplies 110V region specific outlets with

integrated USB ports at designated locations (available only when shore power or genset and option B4 4160 are selected; option B4 4515 is recommended alongside this). The standard lead acid house and engine batteries are upgraded to AGM technology, comprising three house AGM batteries plus two additional 210Ah AGM house batteries for a total of five, and the engine starter batteries are paralleled to the house bank and can be engaged from a helm mounted push button. Ventilation is provided by four cabin fans and a windlass "up" footswitch is fitted.

Onboard generation and climate systems include a Northern Lights 9kW generator drawing from the aft port fuel tank, with the capability to transfer fuel from starboard to port (available only for boats fitted with the shore power pack). Chilled water air conditioning for the four cabin layout is delivered by a Frigomar 62,000 BTU/h BLDC chiller unit feeding two 12,000 BTU/h, three 5,000 BTU/h and one 8,000 BTU/h air handlers, controlled via five digital panels, with magnetic drive raw water and coolant circulation pumps. Sail handling is eased by an electric mainsheet winch in place of the manual standard. Entertainment and galley conveniences include provision for a saloon TV on a swing bracket with AC outlet 431, a TV/DVD provision in the owner's cabin for four cabin layouts with swing bracket and AC outlet 431, and a 110V microwave in the galley.

Sustainable energy and utility systems comprise eleven solar panels rated at 100W each, 9,360, supported by a Sterling alternator to battery charger, 669. Underwater lighting is composed of two blue stern lights. Sanitary arrangements for the four cabin version employ Sanimarin electric fresh water flushing toilets in place of electric salt water units, and hot water capacity is increased to two 11 gal 220V water heaters instead of 6 gal units. Potable water autonomy is further extended by a 220V Sea Recovery watermaker producing 117 litres (31 US gal) per hour, and a 220V washer/dryer is installed in the port corridor. Deck systems include a dual fresh/salt deck wash fitting and pump, a stern shower with hot and cold water

(instead of cold only), a 220V electric grill built into the aft cockpit wet locker, a 110V icemaker in the aft cockpit replacing the standard storage locker, and additional refrigeration in the galley.

The exterior specification follows Exterior Pack 1 in Charcoal (Grey) and is completed with aft cockpit side and aft shade curtains, removable coachroof side window shade covers, cushioned seating with seats and backrests in both aft and forward cockpits and foredeck cushions. A stainless steel dive bottle rack on the swim platform accommodates four bottles and the helm is finished with a leather covered steering wheel. A winch type lifting platform with folding chocks is fitted and composite teak decking is laid across the aft and forward cockpits, helm platform, transom steps, side deck steps, flybridge and lifting platform. Sail inventory and handling are enhanced by a boom cover (stackpack) aligned with the chosen exterior pack, a bowsprit with roller furler (description to be determined), Code 0 and Code D sails (descriptions to be determined), and a square top mainsail equipped with a Karver Hook in place of the standard mainsail.

Anchoring and docking gear consist of a 55 lb (25 kg) stainless steel DTX anchor with 165 ft (50 m) galvanised chain, a 35 lb (16 kg) Britany anchor supplied with 26 ft (8 m) chain and 200 ft (61 m) warp, and an option of 230 ft (70 m) anchor chain in lieu of the standard 165 ft (50 m) length, together with an anchor bridle, shackles and a hook. Dockside consumables include six fenders, four mooring lines (16 mm x 10 m) and two spring lines (16 mm x 15 m).

Completion, transport and commissioning are handled as part of the package with anti fouling paint and transport included, and for US delivery the safety outfit comprises a USCG eight man life raft together with U bolts and tie downs.

## Disclaimer

---

The particulars presented for this yacht have been supplied in good faith;

nevertheless, their accuracy cannot be guaranteed and no warranty, express or implied, is made regarding the vessel's condition. This offering may be affected by prior sale, alterations in price, or withdrawal from the market at any time without notice. The information is provided as a convenience by the yacht broker to its clientele and is not intended to constitute a formal representation of any specific yacht for sale.

# CONTACTS

---

Shestakov Yacht Sales is a brokerage company specializing in the sale and service of yachts worldwide. The company offers services for buying and selling both new and used motor yachts, sailing vessels, and luxury superyachts. They also provide yacht registration, insurance, technical maintenance, crew selection, and charter organization services across the U.S., Canada, Latin America, the Caribbean, and the Bahamas.

The founder and lead broker of the company is Andrey Shestakov, a licensed and certified expert with extensive experience in marine engineering and shipbuilding.

The company has an extensive network of partnerships with major yacht manufacturers worldwide and provides services in multiple languages, including Russian, Ukrainian, Spanish, and English. The office is in Dania Beach, Florida, USA.

For more information and to view available yachts, you can visit the company's official website: <https://shestakovyachtsales.com>

## Contact details

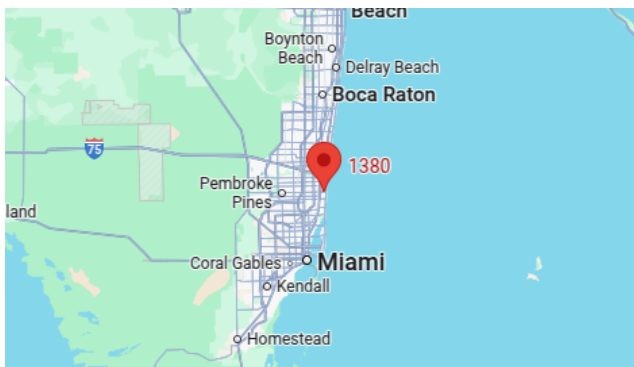
---

**Phone:** +1(954)274-4435

**Email:** [andrey@shestakovyachtsales.com](mailto:andrey@shestakovyachtsales.com)

## Address

---



1380 Weeping Willow Way, Hollywood,  
Florida 33019